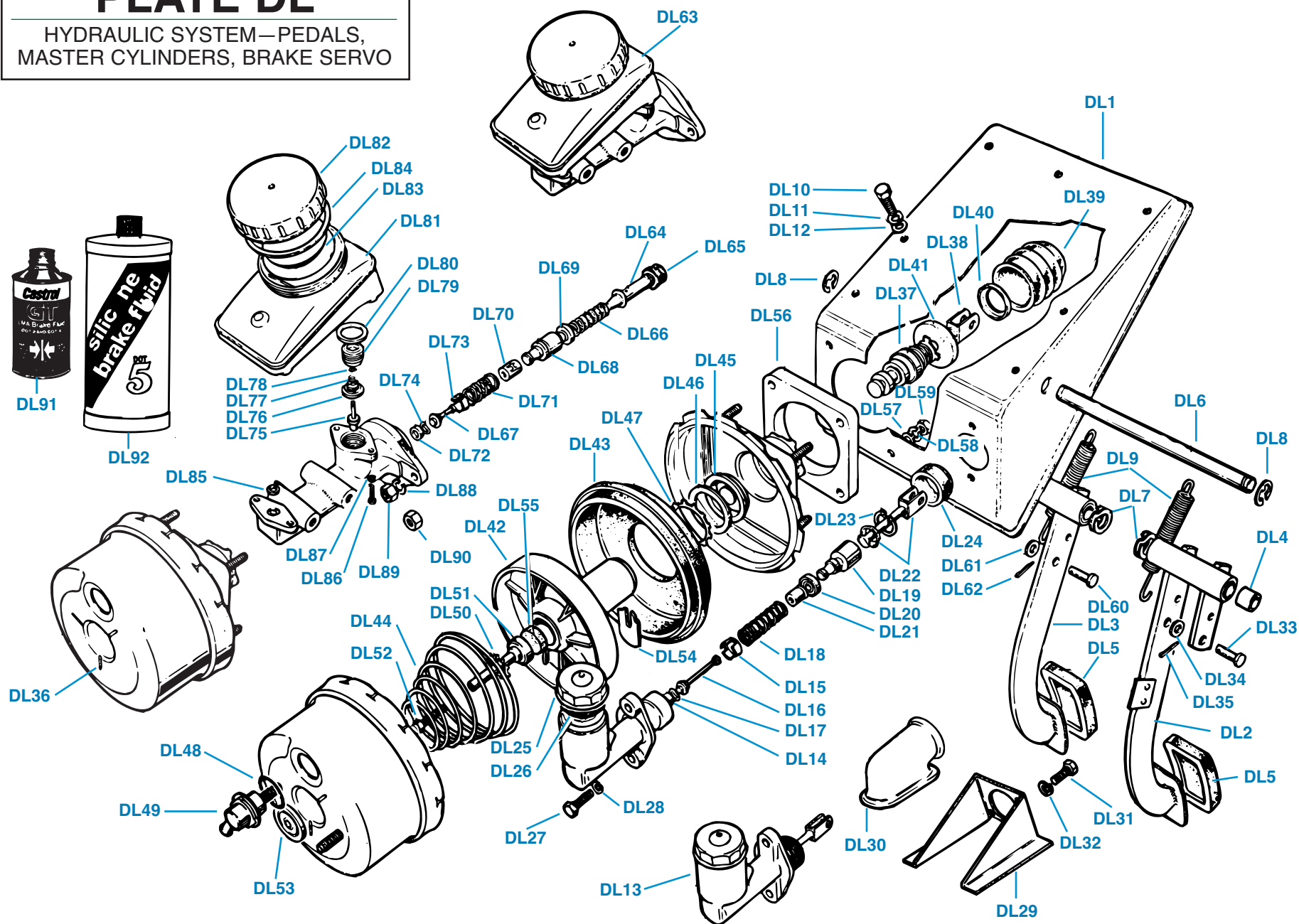


# PLATE DL

HYDRAULIC SYSTEM—PEDALS,  
MASTER CYLINDERS, BRAKE SERVO

## TRIUMPH TR6



# HYDRAULIC SYSTEM—PEDALS, MASTER CYLINDERS, BRAKE SERVO

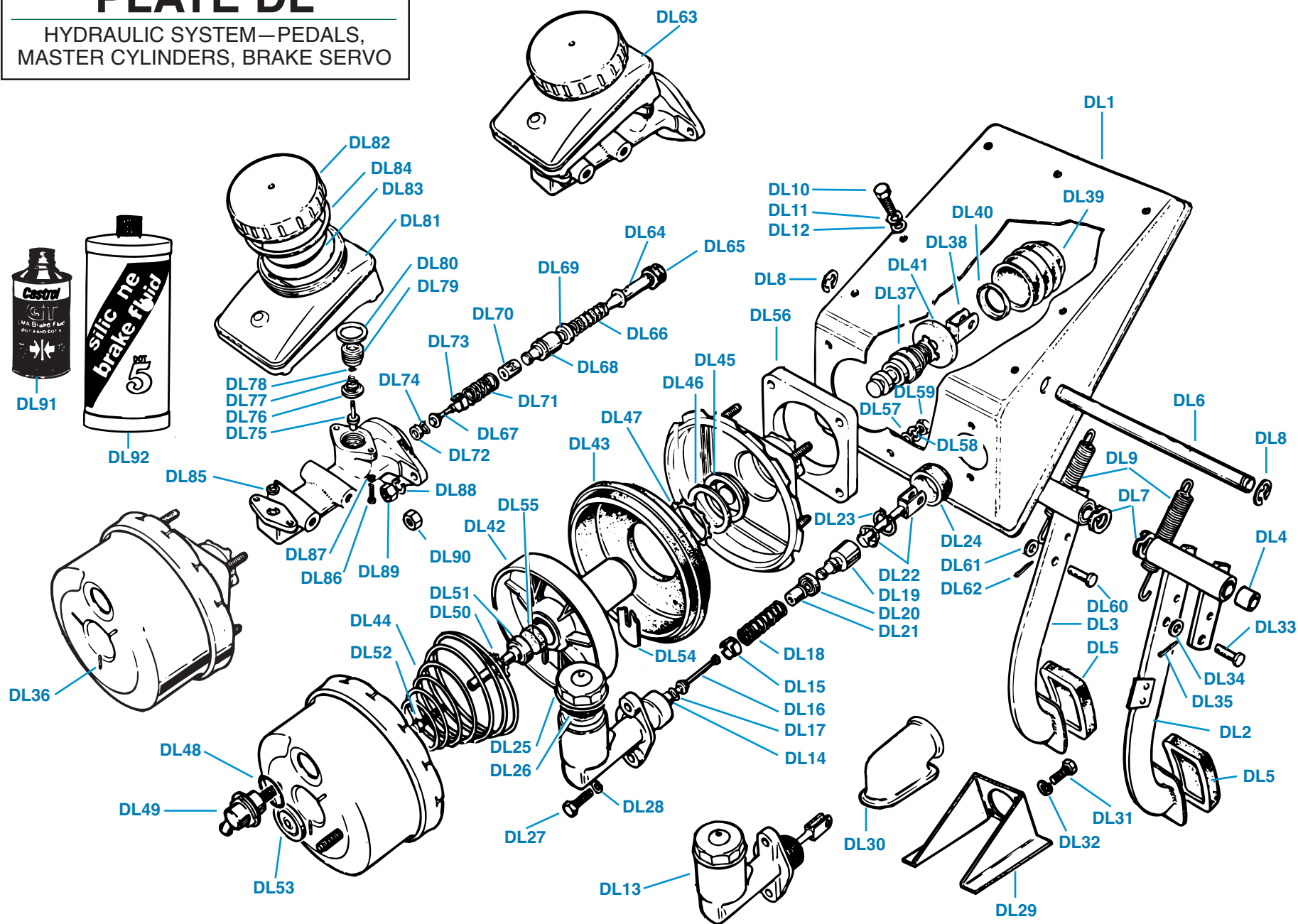
Plate No.	Part No.	Description	No. Off	Plate No.	Part No.	Description	No. Off
<b>PEDAL BOX DETAILS</b>				<b>CLUTCH MASTER CYLINDER ASSEMBLY-Continued</b>			
DL1	308273	<b>Pedal Box Sub-Assembly</b>	1	DL24	106093	<b>Cover</b> , dust	1
DL2	148023	<b>CLUTCH PEDAL ASSEMBLY</b> , L.H.S.	1	DL25	106094	<b>Cap</b> , fluid filler	1
	148021	<b>CLUTCH PEDAL ASSEMBLY</b> , R.H.S.	1	DL26	106095	<b>Washer</b> , rubber, filler cap	1
DL3	148022	<b>BRAKE PEDAL ASSEMBLY</b> , L.H.S.	1			<b>HARDWARE</b> , securing clutch master cylinder to bulkhead and to pedal box, L.H.S.	
	148020	<b>BRAKE PEDAL ASSEMBLY</b> , R.H.S.	1	DL27	HU808	<b>Screw</b> , set	2
DL4	147166	<b>Bush</b> , pedal shaft, fitted up to comm. no. CC/CP50000	4	DL28	WL208	<b>Washer</b> , lock	2
	136611	<b>Bush</b> , pedal shaft, fitted after comm. no. CC/CP50000	4	DL29	146413	<b>MOUNTING DETAILS</b> , clutch master cylinder, R.H.S.	
DL5	122289	<b>Pad</b> , rubber, on clutch and brake pedals	2	DL30	125217	<b>Mounting Bracket Assembly</b>	1
DL6	148017	<b>Shaft</b> , pedal	1			<b>Dust Cover</b>	1
DL7	44630	<b>Washer</b> , double-coil, on pedal shaft	2			<b>HARDWARE</b> , securing master cylinder to mounting bracket	
	1A2139	<b>Washer</b> , double-coil; alternative to part no. 44630	2	DL31	HU807	<b>Screw</b> , set	2
DL8	506542	<b>Circlip</b> , securing pedal shaft to pedal box	2	DL32	WL208	<b>Washer</b> , lock	2
DL9	57950	<b>Spring</b> , return, clutch and brake pedals	2			<b>HARDWARE</b> , securing master cylinder fork end to clutch pedal	
		<b>HARDWARE</b> , securing pedal box to car body		DL33	PJ8808	<b>Pin</b> , joint	1
DL10	HU705	<b>Screw</b> , set	9	DL34	WP8	<b>Washer</b> , plain	1
DL11	WL207	<b>Washer</b> , lock	9	DL35	PC9	<b>Pin</b> , cotter	1
DL12	WM57	<b>Washer</b> , plain	9	DL36	218072	<b>BRAKE SERVO UNIT</b>	1
	HU805	<b>Screw</b> , set, R.H.S. only	2		GISP2495	<b>Kit</b> , servo repair, minor	1
	WL208	<b>Washer</b> , lock, R.H.S. only	2	DL37	516888	<b>VALVE AND POPPET ASSEMBLY</b>	1
	WP8	<b>Washer</b> , plain, R.H.S. only	2	DL38	516891	<b>Push Rod Assembly</b>	1
DL13	148530	<b>CLUTCH MASTER CYLINDER ASSEMBLY</b> , .75-inch bore, L.H.S., fitted up to body no. 52951CC	1	DL39	516897	<b>Dust Cover</b>	1
	148531	<b>CLUTCH MASTER CYLINDER ASSEMBLY</b> , .75-inch bore, R.H.S., fitted up to body no. 50910CP	1	DL40	516898	<b>Retainer</b> , dust cover	1
	GISP1967	<b>Kit</b> , clutch master cylinder repair, .75-inch bore	1	DL41	516899	<b>Filter</b>	1
	154933	<b>CLUTCH MASTER CYLINDER ASSEMBLY</b> , .70-inch bore, L.H.S., fitted after body no. 52951CC	1	DL42	516900	<b>Diaphragm Plate</b>	1
	154932	<b>CLUTCH MASTER CYLINDER ASSEMBLY</b> , .70-inch bore, R.H.S., fitted after body no. 50910CP	1	DL43	516901	<b>Diaphragm</b>	1
	GISP2102	<b>Kit</b> , clutch master cylinder repair, .70-inch bore	1	DL44	516902	<b>Spring</b>	1
DL14	106158	<b>Seal</b> , valve	1	DL45	516903	<b>Seal</b>	1
DL15	111163	<b>Spacer</b> , valve	1	DL46	516904	<b>Washer</b>	1
DL16	106157	<b>Stem</b> , valve	1	DL47	516905	<b>Retainer</b>	1
DL17	106090	<b>Washer</b> , spring, valve head	1	DL48	516906	<b>"O" Ring</b>	1
DL18	510815	<b>Spring</b>	1	DL49	516907	<b>Non-Return Valve Assembly</b>	1
DL19	516338	<b>Plunger</b> , .75-inch master cylinders	1	DL50	516908	<b>Retainer</b>	1
	518648	<b>Plunger</b> , .70-inch master cylinders	1	DL51	516909	<b>Valve Push Rod Assembly</b>	1
DL20	510847	<b>Seal</b> , gland, .75-inch master cylinders	1	DL52	516910	<b>Bolt</b>	1
	518649	<b>Seal</b> , gland, .70-inch master cylinders	1	DL53	516911	<b>Seal and Plate Assembly</b>	1
DL21	106088	<b>Retainer</b> , spring	1	DL54	516912	<b>Key</b>	1
DL22	148607	<b>Push Rod Assembly</b> , L.H.S.	1	DL55	516913	<b>Disc</b> , reaction	1
	122296	<b>Push Rod Assembly</b> , R.H.S.	1				
DL23	106092	<b>Circlip</b> , retaining push rod	1				

(Continued on next page.)

# PLATE DL

HYDRAULIC SYSTEM—PEDALS,  
MASTER CYLINDERS, BRAKE SERVO

## TRIUMPH TR6



# HYDRAULIC SYSTEM—PEDALS, MASTER CYLINDERS, BRAKE SERVO

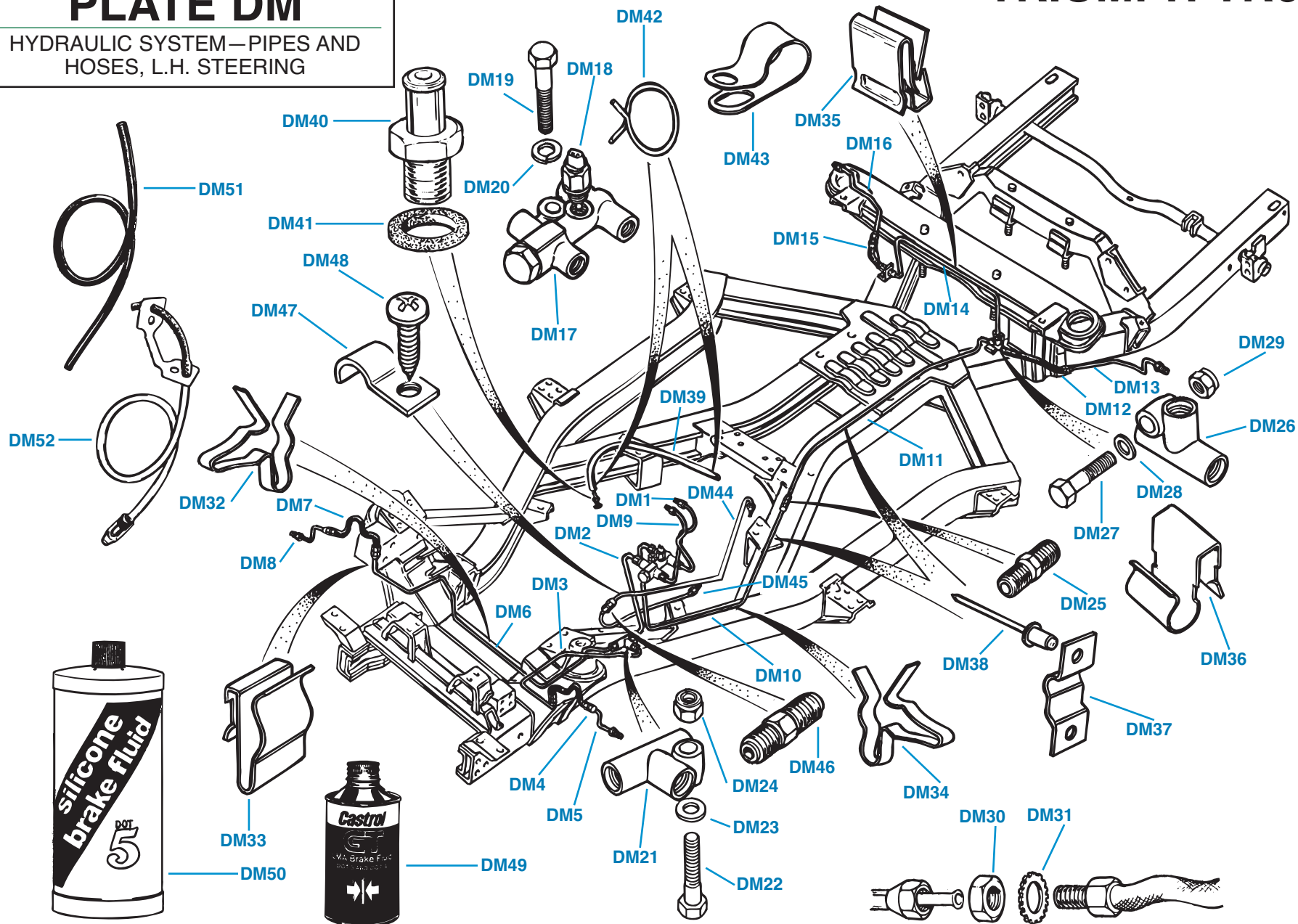
Plate No.	Part No.	Description	No. Off
		<b>HARDWARE</b> , securing brake servo unit to bulkhead panel and to pedal box	
DL56	148024	<b>Spacer</b> , aluminium	1
DL57	WP125	<b>Washer</b> , plain	4
DL58	WL208	<b>Washer</b> , lock	4
DL59	HN2008	<b>Nut</b> , older-issue servo units having studs with UNF threads	4
	GHF213	<b>Nut</b> , newer-issue servo units having studs with metric threads	4
		<b>HARDWARE</b> , securing fork end to brake pedal	
DL60	PJ8808	<b>Pin</b> , joint	1
DL61	WP8	<b>Washer</b> , plain	1
DL62	PC9	<b>Pin</b> , cotter	1
DL63	218069	<b>BRAKE MASTER CYLINDER ASSEMBLY</b>	1
	GISP2490	<b>Kit</b> , brake master cylinder repair	1
DL64	517024	<b>Plunger</b> , primary	1
DL65	517025	<b>Seal</b> , gland	1
DL66	517028	<b>Spring</b>	1
DL67	517029	<b>Valve Stem</b>	1
DL68	517026	<b>Plunger</b> , secondary	1
DL69	517027	<b>Seal</b> , ring, two way	1
DL70	517030	<b>Retainer</b> , spring	1
DL71	517031	<b>Spring</b>	1
DL72	512802	<b>Seal</b>	1
DL73	517032	<b>Spacer</b>	1
DL74	517803	<b>Washer</b> , spring	1
DL75	517033	<b>Tipping Valve Assembly</b>	1
DL76	517034	<b>Seat</b> , valve	1
DL77	517035	<b>Spring</b> , valve	1
DL78	517036	<b>Circlip</b>	1
DL79	517037	<b>Nut</b> , valve	1
	517333	<b>KIT</b> , reservoir replacement	1
DL80	517038	<b>Seal</b>	1
DL81	517667	<b>Fluid Reservoir Assembly</b>	1
DL82	214912	<b>Cap</b> , filler	1
DL83	517041	<b>Baffle</b>	1
DL84	517042	<b>Gasket</b>	1
DL85	517542	<b>Seal</b>	1
DL86	517044	<b>Screw</b> , set	4
DL87	517045	<b>Washer</b> , lock	4
		<b>HARDWARE</b> , securing brake master cylinder to servo unit	
DL88	WL209	<b>Washer</b> , lock	2
DL89	HN2009	<b>Nut</b> , older-issue servo units having UNF threads	2
DL90	GHF214	<b>Nut</b> , newer-issue servo units having metric threads (Currently available servo units have metric threads.)	2

Plate No.	Part No.	Description	No. Off
		<b>HYDRAULIC FLUID</b>	
DL91	GILMA	<b>Hydraulic Fluid</b> , Girling LMA brand, 12 oz. can	A/R
DL92	SBF32	<b>Hydraulic Fluid</b> , silicone, DOT5, 32 oz. can	A/R

# PLATE DM

HYDRAULIC SYSTEM—PIPES AND  
HOSES, L.H. STEERING

## TRIUMPH TR6





# HYDRAULIC SYSTEM—PIPES AND HOSES, L.H. STEERING

Plate No.	Part No.	Description	No. Off
<b>BRAKE PIPES AND HOSES</b>			
<b>PIPES AND HOSES FOR FRONT BRAKES</b>			
DM1	309730	<b>Steel Pipe Assembly</b> , from master cylinder to pressure differential valve	1
DM2	309728	<b>Steel Pipe Assembly</b> , from pressure differential valve to 3-way fitting on chassis frame front sidemember	1
DM3	309720	<b>Steel Pipe Assembly</b> , from 3-way fitting to L.H. front brake hose	1
DM4	GIGHP13	<b>Flexible Hose</b> , L.H. front	1
DM5	309723	<b>Steel Pipe Assembly</b> , from L.H. front brake hose to L.H. front brake caliper, fitted up to comm. no. CC81078 and CP76094 (Imperial threads on caliper end.)	1
	312550	<b>Steel Pipe Assembly</b> , from L.H. front brake hose to L.H. front brake caliper, fitted after comm. no. CC81078 and CP76094 (Metric threads on caliper end.)	1
DM6	309721	<b>Steel Pipe Assembly</b> , from 3-way fitting to R.H. front brake hose	1
DM7	GIGHP13	<b>Flexible Hose</b> , R.H. front	1
DM8	309722	<b>Steel Pipe Assembly</b> , from R.H. front brake hose to R.H. front brake caliper, fitted up to comm. no. CC81078 and CP76094 (Imperial threads on caliper end.)	1
	312551	<b>Steel Pipe Assembly</b> , from R.H. front brake hose to R.H. front brake caliper, fitted after comm. no. CC81078 and CP76094 (Metric threads on caliper end.)	1
<b>PIPES AND HOSES FOR REAR BRAKES</b>			
DM9	309729	<b>Steel Pipe Assembly</b> , from master cylinder to pressure differential valve	1
DM10	309731	<b>Steel Pipe Assembly</b> , from pressure differential valve to 2-way fitting on chassis frame sidemember	1
DM11	309725	<b>Steel Pipe Assembly</b> , from 2-way fitting to 3-way fitting on chassis frame rear sidemember	1
DM12	GIGHP15	<b>Flexible Hose</b> , L.H. rear	1
DM13	309726	<b>Steel Pipe Assembly</b> , from L.H. rear brake hose to L.H. rear wheel cylinder	1
DM14	309724	<b>Steel Pipe Assembly</b> , from 3-way fitting to R.H. rear brake hose	1
DM15	GIGHP14	<b>Flexible Hose</b> , R.H. rear	1
DM16	309727	<b>Steel Pipe Assembly</b> , from R.H. rear brake hose to R.H. rear wheel cylinder	1
		<b>Please Note:</b> Steel pipes are supplied in correct lengths in coiled form with correct pipe flares and end fittings installed.	
<b>PRESSURE DIFFERENTIAL VALVE ASSEMBLY</b>			
DM17	149972	<b>Switch</b> , brake warning light	1
DM18	149971		1

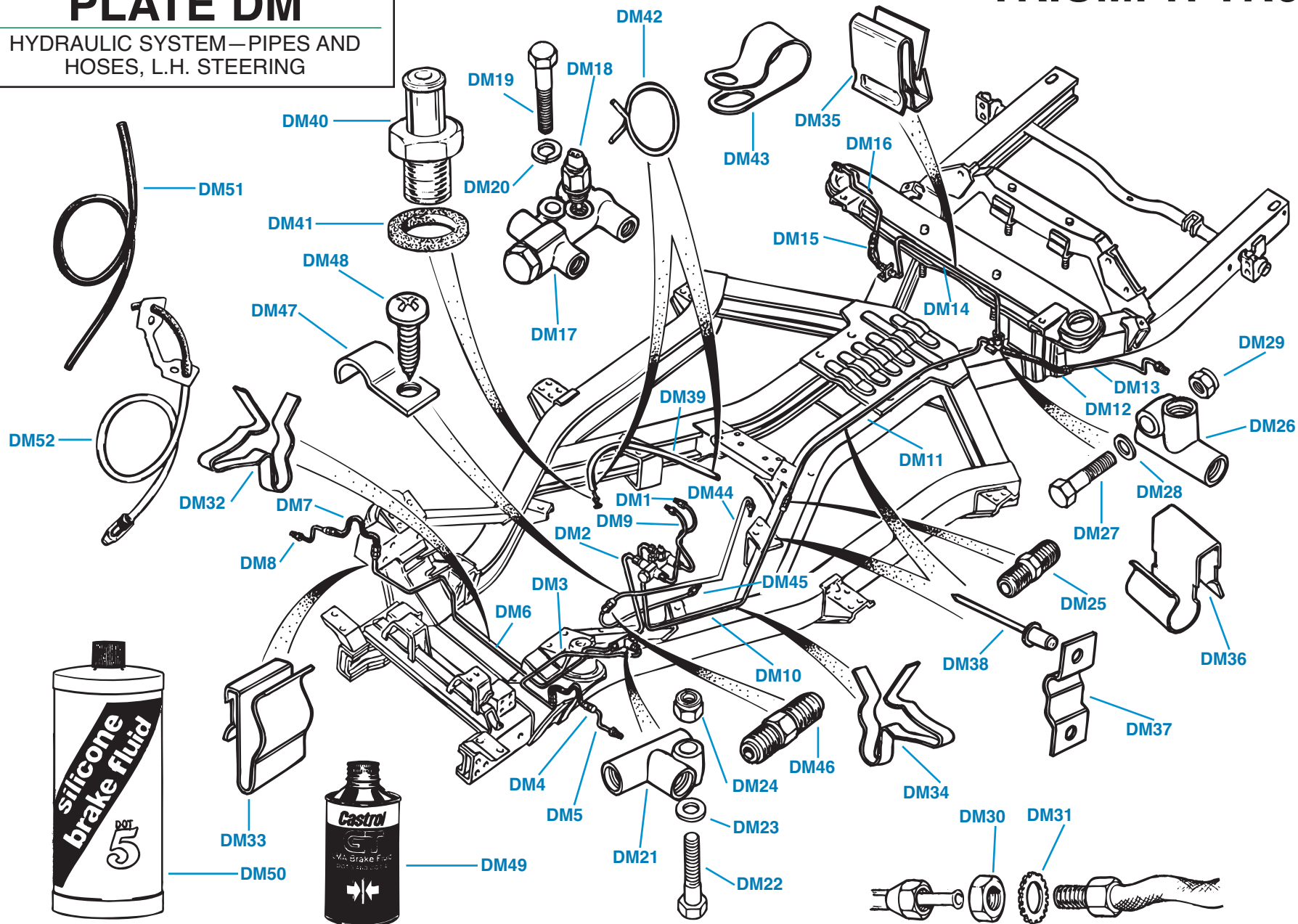
Plate No.	Part No.	Description	No. Off
DM19	HB709	<b>HARDWARE</b> , securing pressure differential valve to body gusset	1
DM20	WL207	<b>Bolt</b>	1
		<b>Washer</b> , lock	1
<b>ADDITIONAL BRAKE HYDRAULIC FITTINGS</b>			
DM21	136908	<b>Fitting</b> , 3-way, on chassis frame L.H. front sidemember	1
		<b>HARDWARE</b> , securing 3-way fitting to mounting bracket on chassis frame	
DM22	HB710D	<b>Bolt</b>	1
DM23	WP7	<b>Washer</b> , plain	1
DM24	TN3207	<b>Nut</b> , nyloc	1
DM25	121782	<b>Fitting</b> , 2-way, connecting rear brake pipes	1
DM26	136908	<b>Fitting</b> , 3-way, located on L.H. rear chassis sidemember	1
		<b>HARDWARE</b> , securing fitting to chassis frame	
DM27	HB710D	<b>Bolt</b>	1
DM28	WP7	<b>Washer</b> , plain	1
DM29	TN3207	<b>Nut</b> , nyloc	1
		<b>HARDWARE</b> , securing flexible hoses to brackets on chassis frame, front suspension, and trailing arms	
DM30	516614	<b>Nut</b>	5
DM31	WN709	<b>Washer</b> , shakeproof	5
	107072	<b>Washer</b> , copper, between L.H. rear brake hose and 3-way fitting	1
<b>MISCELLANEOUS CLIPS</b> , securing hydraulic pipes			
DM32	59191	<b>Clip</b> , securing R.H. front brake pipe to chassis frame crossmember	1
DM33	137048	<b>Clip</b> , R.H. front brake pipe to suspension turret	1
DM34	59191	<b>Clip</b> , securing rear brake pipe (between pressure differential valve and 2-way fitting) to chassis frame	1
DM35	618386	<b>Clip</b> , securing rear brake pipe (from 3-way fitting to R.H. brake hose) to chassis crossmember	1
DM36	615836	<b>Clip</b> , securing rear wheel cylinder pipes to trailing arm castings	2
DM37	149765	<b>Clip</b> , securing brake pipes and fuel pipes to chassis sidemember	A/R
DM38	560772	<b>Rivet</b> , pop, securing 149765 clips to chassis sidemember	A/R
<b>BRAKE SERVO VACUUM HOSE AND FITTINGS</b>			
DM39	149330	<b>Hose</b> , vacuum, from intake manifold to brake servo; black hose with yellow stripe, fitted earlier	1
	149329	<b>Hose</b> , vacuum, from intake manifold to brake servo; black hose without yellow stripe, fitted later	1
DM40	144373	<b>Fitting</b> , vacuum hose, fitted to intake manifold	1
DM41	WF513	<b>Washer</b> , fibre, sealing fitting	1
DM42	CC5011	<b>Clip</b> , hose, securing vacuum hose to intake manifold and to servo unit	2
DM43	514048	<b>P-Clip</b> , securing vacuum hose to rocker cover stud	1

(Continued on next page.)

# PLATE DM

HYDRAULIC SYSTEM—PIPES AND  
HOSES, L.H. STEERING

## TRIUMPH TR6



# HYDRAULIC SYSTEM—PIPES AND HOSES, L.H. STEERING

Plate No.	Part No.	Description	No. Off
<b>CLUTCH PIPES AND HOSES</b>			
DM44	148816	<b>Steel Pipe Assembly</b> , from clutch master cylinder to flexible clutch hose (Pipe supplied pre-bent to shape.)	1
DM45	140420	<b>Flexible Clutch Hose</b> , nylon	1
DM46	143032	<b>Fitting</b> , 2-way, connecting steel pipe to nylon hose	1
DM47	618303	<b>Clip</b> , securing steel pipe to front wheelarch	1
DM48	YZ3303	<b>Screw</b> , securing clip	1
<b>HYDRAULIC CLUTCH AND BRAKE FLUID</b>			
DM49	GILMA	<b>Girling LMA Hydraulic Fluid</b> , 12 oz. can	A/R
DM50	SBF32	<b>Silicone Brake Fluid</b> , 32 oz. can	A/R
<b>BLEEDING AIDS</b>			
DM51	GI64947041	<b>Girling Bleeding Tube</b> (The right tube for the right job.)	1
DM52	GIT20	<b>Girling Vizibleed</b> , one-man bleeding system	1

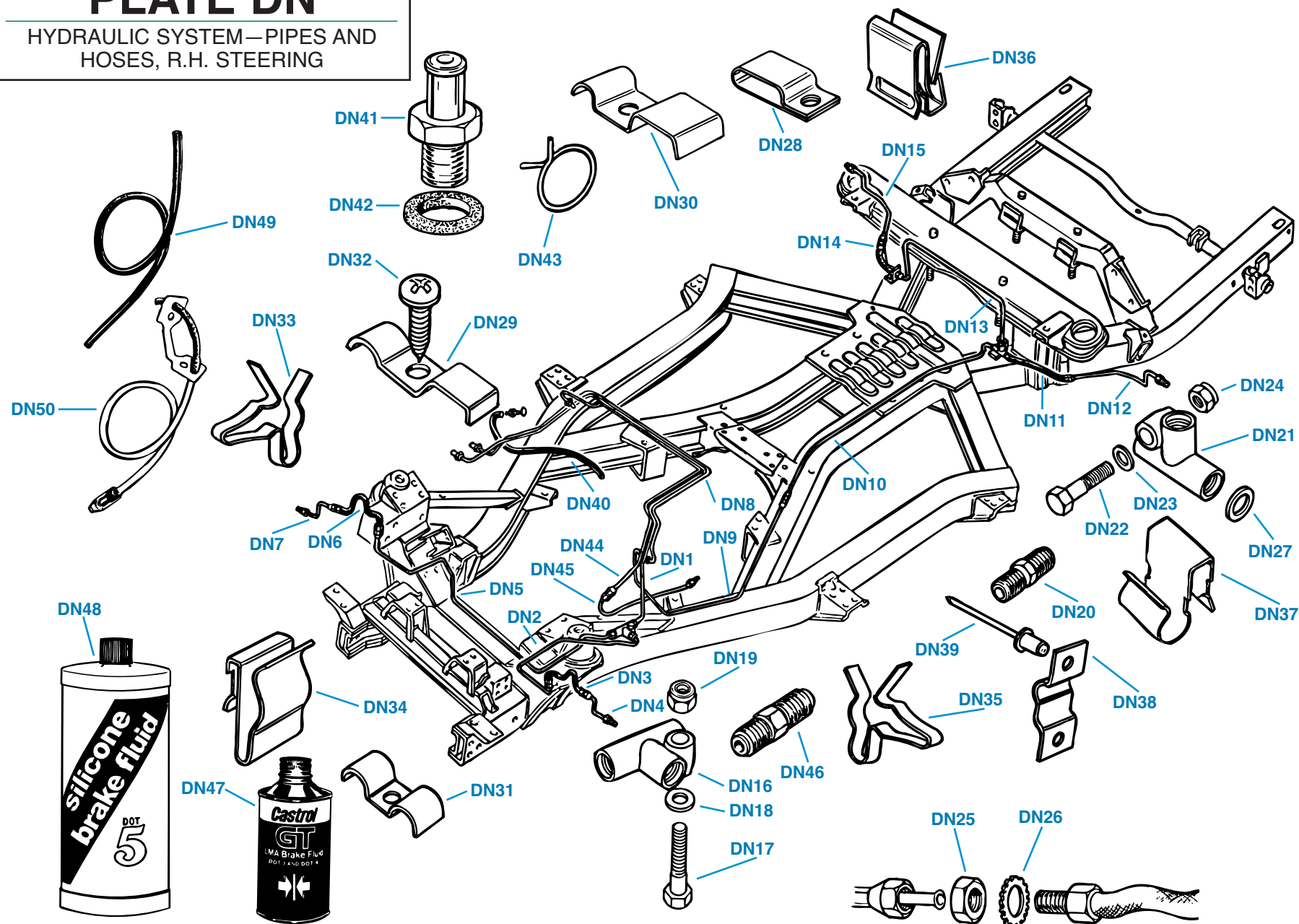
Plate No.	Part No.	Description	No. Off
-----------	----------	-------------	---------



# PLATE DN

HYDRAULIC SYSTEM—PIPES AND  
HOSES, R.H. STEERING

## TRIUMPH TR6



# HYDRAULIC SYSTEM—PIPES AND HOSES, R.H. STEERING

Plate No.	Part No.	Description	No. Off
<b>BRAKE PIPES AND HOSES</b>			
<b>PIPES AND HOSES FOR FRONT BRAKES</b>			
DN1	309719	<b>Steel Pipe Assembly</b> , from master cylinder to 3-way fitting on chassis front sidemember	1
DN2	309720	<b>Steel Pipe Assembly</b> , from 3-way fitting to L.H. front brake hose	1
DN3	GIGHP13	<b>Flexible Hose</b> , L.H. front	1
DN4	309723	<b>Steel Pipe Assembly</b> , from L.H. front brake hose to L.H. front brake caliper, fitted up to comm. no. CP76094 (Imperial threads on caliper end.)	1
	312550	<b>Steel Pipe Assembly</b> , from L.H. front brake hose to L.H. front brake caliper, fitted after commission CP76094 (Metric threads on caliper end.)	1
DN5	309721	<b>Steel Pipe Assembly</b> , from 3-way fitting to R.H. front brake hose	1
DN6	GIGHP13	<b>Flexible Hose</b> , R.H. front	1
DN7	309722	<b>Steel Pipe Assembly</b> , from R.H. front brake hose to R.H. front brake caliper, fitted up to comm. no. CP76094 (Imperial threads on caliper end.)	1
	312551	<b>Steel Pipe Assembly</b> , from R.H. front brake hose to R.H. front brake caliper, fitted after comm. no. CP76094 (Metric threads on caliper end.)	1
<b>PIPES AND HOSES FOR REAR BRAKES</b>			
DN8	309718	<b>Steel Pipe Assembly</b> , from master cylinder to first 2-way-fitting	1
DN9	309717	<b>Steel Pipe Assembly</b> , intermediate, from first 2-way fitting to second 2-way fitting	1
DN10	309725	<b>Steel Pipe Assembly</b> , from second 2-way fitting to 3-way fitting on chassis frame rear sidemember	1
DN11	GIGHP14	<b>Flexible Hose</b> , L.H. rear	1
DN12	309726	<b>Steel Pipe Assembly</b> , from L.H. rear brake hose to L.H. rear wheel cylinder	1
DN13	309724	<b>Steel Pipe Assembly</b> , from 3-way fitting to R.H. rear brake hose	1
DN14	GIGHP15	<b>Flexible Hose</b> , R.H. rear	1
DN15	309727	<b>Steel Pipe Assembly</b> , from R.H. rear brake hose to R.H. rear wheel cylinder	1
		<b>Please Note:</b> Steel pipes are supplied in correct lengths in coiled form with correct pipe flares and end fittings installed	
<b>ADDITIONAL BRAKE HYDRAULIC FITTINGS</b>			
DN16	136908	<b>Fitting</b> , 3-way, on chassis frame L.H. front sidemember	1
		<b>HARDWARE</b> , securing 3-way fitting to mounting bracket on chassis frame	
DN17	HB710D	<b>Bolt</b>	1
DN18	WP7	<b>Washer</b> , plain	1
DN19	TN3207	<b>Nut</b> , nyloc	1
DN20	121782	<b>Fitting</b> , 2-way, connecting rear brake pipes	2
DN21	136908	<b>Fitting</b> , 3-way, located on L.H. rear chassis sidemember	1

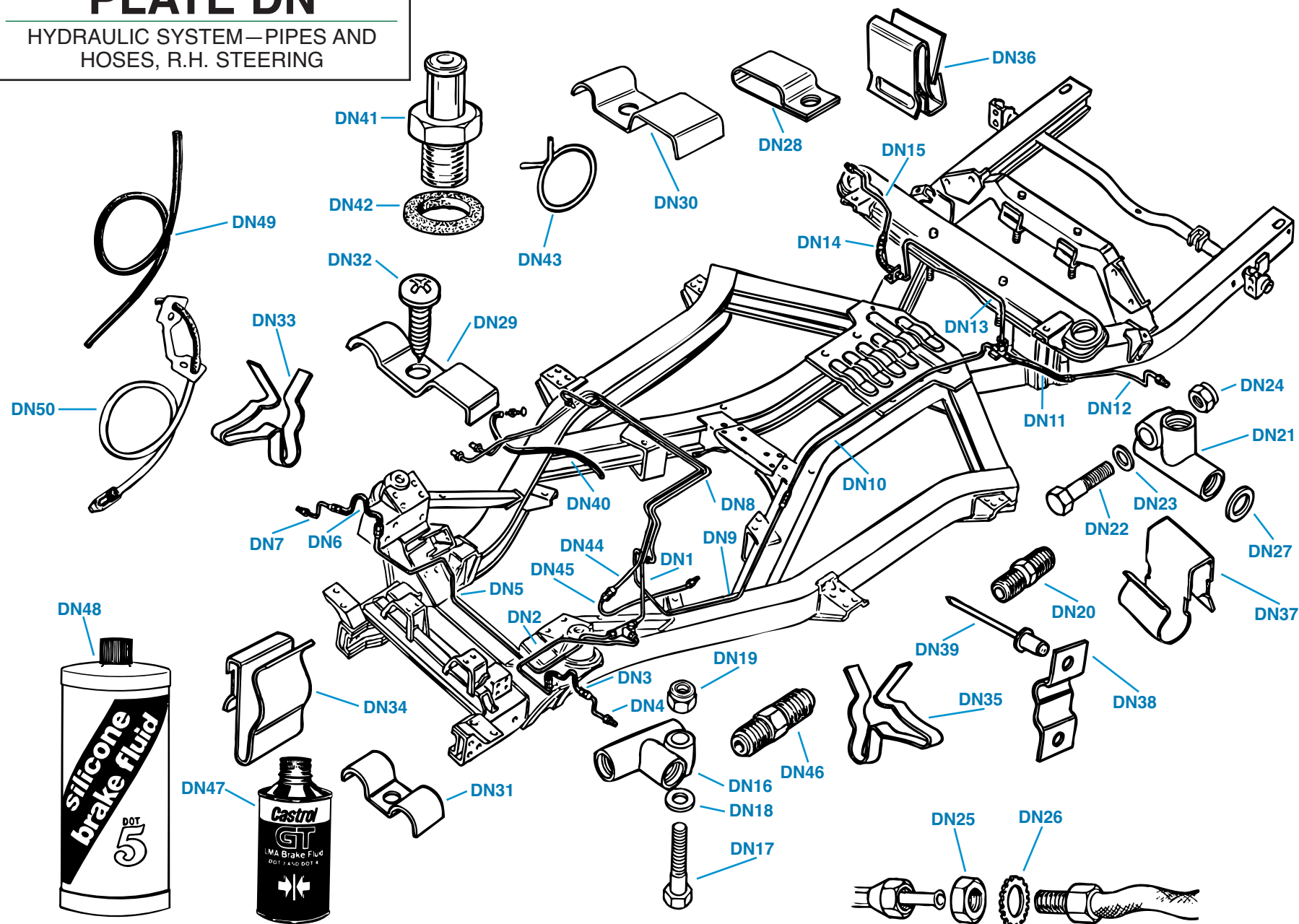
Plate No.	Part No.	Description	No. Off
<b>ADDITIONAL BRAKE HYDRAULIC FITTINGS—Continued</b>			
		<b>HARDWARE</b> , securing fitting to chassis frame	
DN22	HB710D	<b>Bolt</b>	1
DN23	WP7	<b>Washer</b> , plain	1
DN24	TN3207	<b>Nut</b> , nyloc	1
		<b>HARDWARE</b> , securing flexible hoses to brackets on chassis frame, front suspension, and trailing arms	
DN25	516614	<b>Nut</b>	4
DN26	WN709	<b>Washer</b> , shakeproof	4
DN27	107072	<b>Washer</b> , copper, between L.H. rear brake hose and 3-way fitting	1
<b>MISCELLANEOUS CLIPS</b> , securing hydraulic pipes to chassis and to body			
DN28	150969	<b>Clip</b> , double, anchoring front brake pipes to bolt securing clutch master cylinder bracket	1
DN29	149059	<b>Clip</b> , retaining pipe between master cylinder and front 3-way fitting	2
DN30	149766	<b>Clip</b> , retaining pipe between master cylinder and front 3-way fitting	2
DN31	119147	<b>Clip</b> , retaining clutch and brake pipes	4
DN32	YZ3303	<b>Screw</b> , securing clips 149059 and 149766	8
DN33	59191	<b>Clip</b> , securing R.H. front brake pipe to chassis frame crossmember	1
DN34	137048	<b>Clip</b> , securing R.H. front brake pipe to suspension stay	1
DN35	59191	<b>Clip</b> , securing rear brake pipe (between first and second 2-way fittings) to chassis frame	1
DN36	618386	<b>Clip</b> , securing rear brake pipe (from 3-way fitting to R.H. brake hose) to chassis crossmember	1
DN37	615836	<b>Clip</b> , securing rear wheel cylinder pipes to trailer arm castings	2
DN38	149765	<b>Clip</b> , securing brake pipes and fuel pipes to chassis sidemember	A/R
DN39	560772	<b>Rivet</b> , pop, securing 149765 clips to chassis sidemember	A/R
<b>BRAKE SERVO VACUUM HOSE AND FITTINGS</b>			
DN40	149330	<b>Hose</b> , vacuum, from intake manifold to brake servo; black hose with yellow stripe, fitted earlier	1
	149329	<b>Hose</b> , vacuum, from intake manifold to brake servo; black hose without yellow stripe, fitted later	1
DN41	144373	<b>Fitting</b> , vacuum hose, fitted to intake manifold	1
DN42	WF513	<b>Washer</b> , fibre, sealing fitting	1
DN43	CC5011	<b>Clip</b> , hose, securing vacuum hose to intake manifold and to servo unit	2
<b>CLUTCH PIPES AND HOSES</b>			
DN44	308362	<b>Steel Pipe Assembly</b> , from clutch master cylinder to flexible clutch hose	1
DN45	140420	<b>Flexible Clutch Hose</b> , nylon	1
DN46	143032	<b>Fitting</b> , 2-way, connecting steel pipe to nylon hose	1

(Continued on next page.)

# PLATE DN

HYDRAULIC SYSTEM—PIPES AND  
HOSES, R.H. STEERING

## TRIUMPH TR6



# HYDRAULIC SYSTEM—PIPES AND HOSES, R.H. STEERING

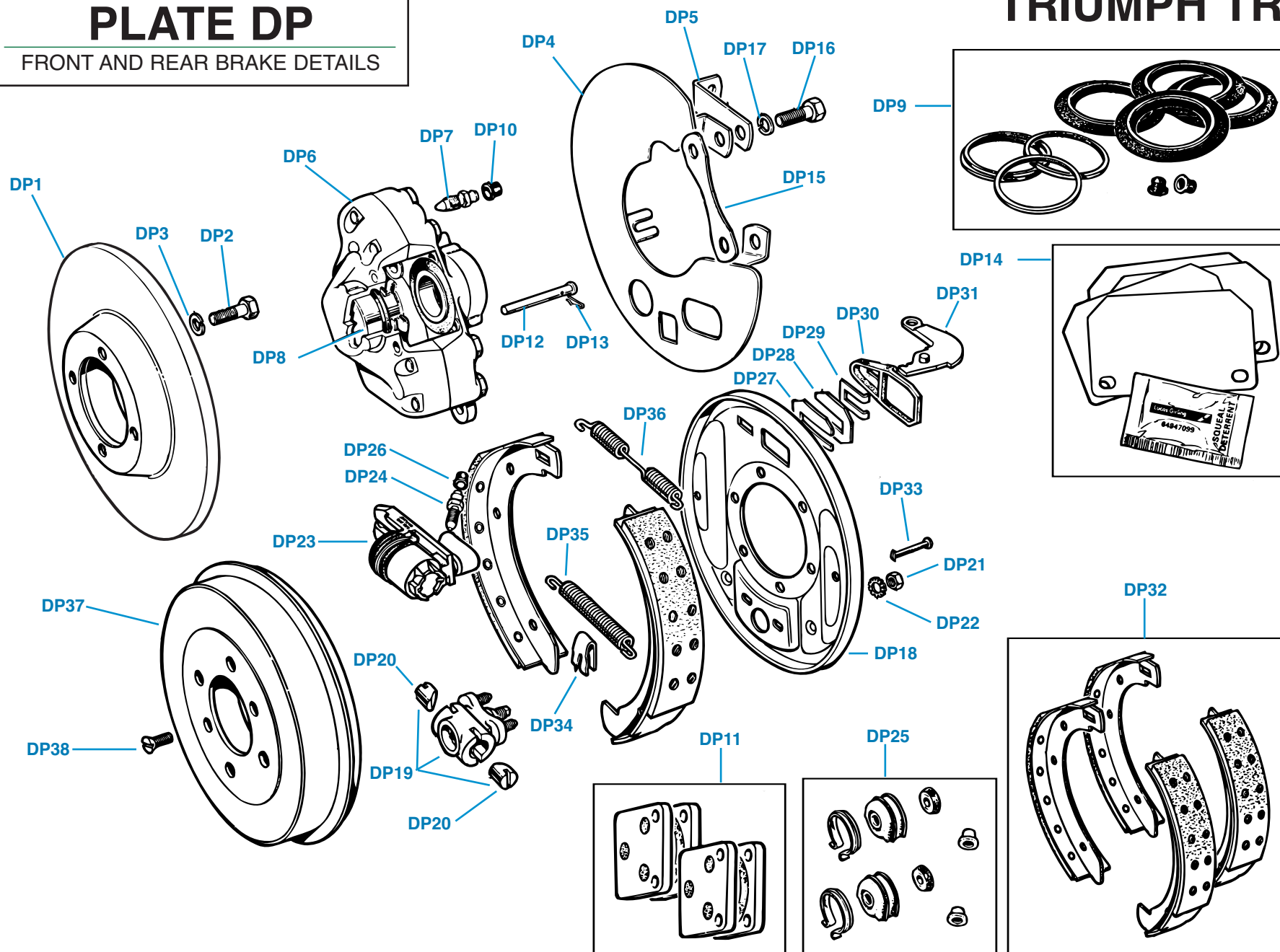
Plate No.	Part No.	Description	No. Off
<b>HYDRAULIC CLUTCH AND BRAKE FLUID</b>			
DN47	GILMA	Girling LMA Hydraulic Fluid, 12 oz. can	A/R
DN48	SBF32	Silicone Brake Fluid, 32 oz. can	A/R
<b>BLEEDING AIDS</b>			
DN49	GI64947041	Girling Bleeding Tube	1
DN50	GIT20	Girling Vizibleed, one-man bleeding system	1

Plate No.	Part No.	Description	No. Off
-----------	----------	-------------	---------

# PLATE DP

FRONT AND REAR BRAKE DETAILS

## TRIUMPH TR6





# FRONT AND REAR BRAKE DETAILS

Plate No.	Part No.	Description	No. Off
<b>FRONT BRAKE DETAILS</b>			
DP1	209327	<b>Front Brake Disc</b>	2
		<b>HARDWARE</b> , securing brake discs to front hubs	
DP2	113150	<b>Bolt</b>	8
DP3	WL209	<b>Washer</b> , lock	8
DP4	307227	<b>Dust Cover Assembly</b> , L.H.	1
	307226	<b>Dust Cover Assembly</b> , R.H.	1
DP5	141124	<b>Bracket</b> , hydraulic hose	2
		<b>FRONT BRAKE CALIPERS</b> (Girling Type 16P), with Imperial threads, fitted up to comm. no. CC29929 and CP26075	
DP6	307977	<b>Caliper</b> , L.H.	1
	307977R	<b>Caliper</b> , factory rebuilt	1
	307976	<b>Caliper</b> , R.H.	1
	307976R	<b>Caliper</b> , factory rebuilt, R.H.	1
		<b>FRONT BRAKE CALIPERS</b> (Girling Type 16PB), with Imperial threads, fitted from comm. no. CC29930 and CP26076 up to CC81078 and CP76094	
	311851	<b>Caliper</b> , L.H.	1
	311851R	<b>Caliper</b> , factory rebuilt, L.H.	1
	311852	<b>Caliper</b> , R.H.	1
	311852R	<b>Caliper</b> , factory rebuilt, R.H.	1
		<b>FRONT BRAKE CALIPERS</b> (Girling Type M16P), with metric threads, fitted after comm. no. CC81078 and CP76094	
	159026	<b>Caliper</b> , L.H.	1
	159026R	<b>Caliper</b> , factory rebuilt, L.H.	1
	159027	<b>Caliper</b> , R.H.	1
	159027R	<b>Caliper</b> , factory rebuilt, R.H.	1

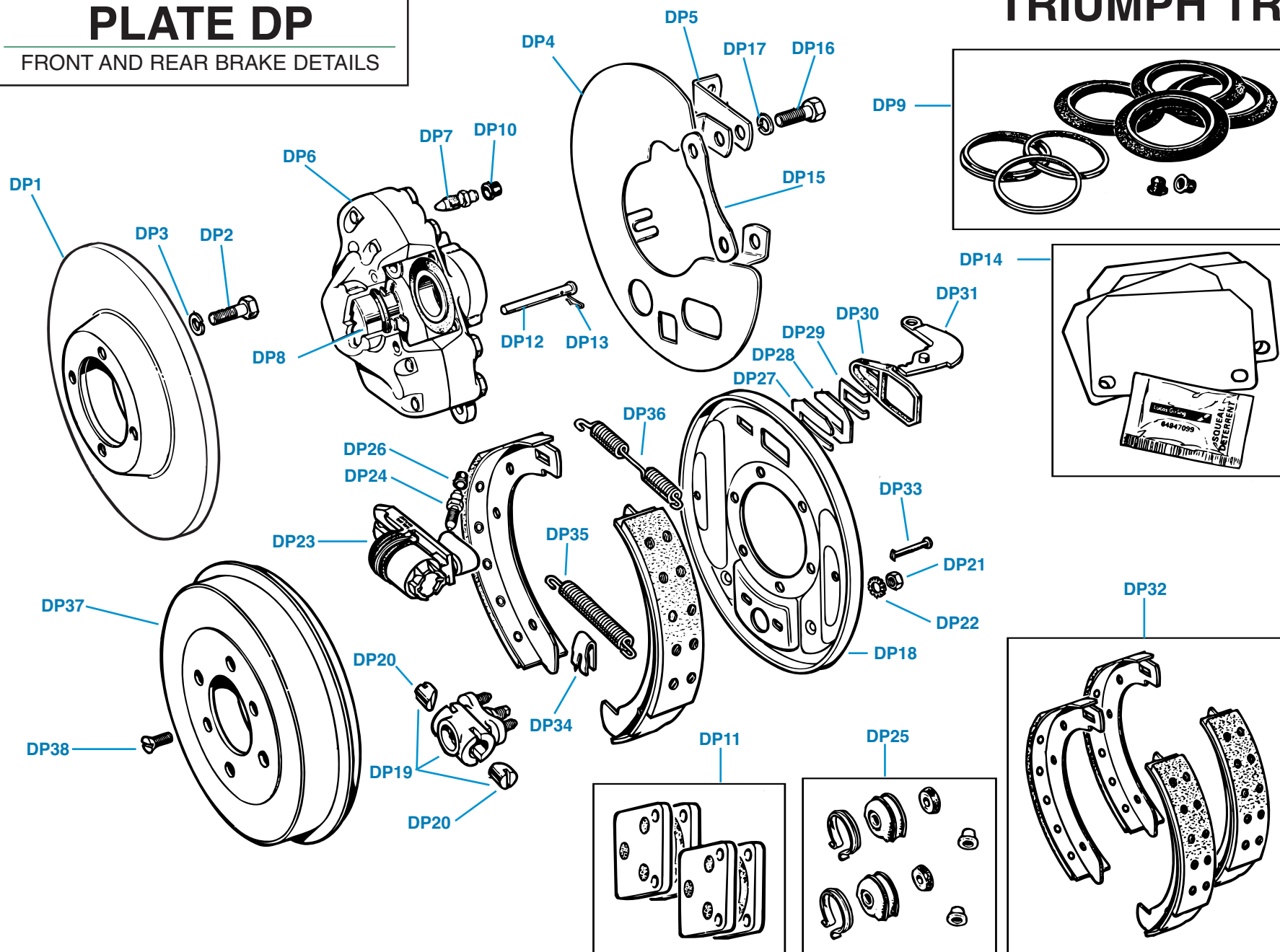
Plate No.	Part No.	Description	No. Off
<b>FRONT BRAKE DETAILS-Continued</b>			
<b>FRONT BRAKE SERVICE COMPONENTS</b>			
DP7	108756	<b>Screw</b> , bleed, type 16P and type 16PB calipers	2
	521119	<b>Screw</b> , bleed, type M16P calipers	2
DP8	510792	<b>Piston</b> , type 16P calipers	4
	157685	<b>Piston</b> , type 16PB and type M16P calipers	4
DP9	GISP2501	<b>SEAL REPLACEMENT KIT</b> , type 16P calipers	1
	GISP2589	<b>SEAL REPLACEMENT KIT</b> , type 16PB and type M16P calipers	1
DP10	105676	<b>Cap</b> , bleeder screw	2
		<b>BRAKE PAD DETAILS</b> , type 16P and type 16B calipers	
DP11	GIGP81	<b>Brake Pad Set</b>	1
DP12	509058	<b>Pin</b> , retaining brake pads	4
DP13	509059	<b>Clip</b> , securing pins	4
DP14	GISP2750	<b>Anti-Squeal Kit</b> , including shims and special grease	1
		<b>BRAKE PAD DETAILS</b> , type M16P calipers	
	GIGP283	<b>Brake Pad Set</b>	1
	521121	<b>Pin</b> , retaining brake pads	4
	511032	<b>Clip</b> , securing pins	4
	GISP2751	<b>Anti-Squeal Kit</b> , including shims and special grease	1
		<b>HARDWARE</b> , securing calipers, dust covers, and hose brackets to front suspension assembly, types 16P and 16PB calipers only	
DP15	115682	<b>Shim</b> , centering calipers in relation to brake discs	A/R
DP16	113142	<b>Bolt</b>	4
DP17	WL210	<b>Washer</b> , lock	4
		<b>HARDWARE</b> , securing calipers, dust covers, and hose brackets to front suspension assembly, type M16P calipers only	
	115682	<b>Shim</b> , centering calipers in relation	A/R
	158668	<b>Bolt</b>	4
	WL211	<b>Washer</b> , lock	4

(Continued on next page.)

# PLATE DP

FRONT AND REAR BRAKE DETAILS

## TRIUMPH TR6



# FRONT AND REAR BRAKE DETAILS

Plate No.	Part No.	Description	No. Off	Plate No.	Part No.	Description	No. Off
		<b>REAR BRAKE DETAILS</b>					
	211444	<b>REAR BRAKE ASSEMBLY</b> , L.H., fitted with .7-inch wheel cylinder and standard brake shoes	1				
	211445	<b>REAR BRAKE ASSEMBLY</b> , R.H., fitted with .7-inch wheel cylinder and standard brake shoes	1				
DP18	212058	<b>Back Plate Assembly</b> , L.H.	1				
	212059	<b>Back Plate Assembly</b> , R.H.	1				
DP19	120142	<b>REAR BRAKE ADJUSTER ASSEMBLY</b>	2				
DP20	111054	<b>Tappet</b> , adjuster unit	4				
		<b>HARDWARE</b> , securing brake adjusters to back plates					
DP21	HN2007	<b>Nut</b>	4				
DP22	WN707	<b>Washer</b> , shakeproof	4				
DP23	510942	<b>REAR WHEEL CYLINDER ASSEMBLY</b> , .7-inch bore, fitted to all models except U.S.A.	2				
	510942	<b>REAR WHEEL CYLINDER ASSEMBLY</b> , .7-inch bore, fitted to U.S.A. models up to 1976	2				
DP24	108756	<b>Screw</b> , bleed	2				
DP25	GISP2083	<b>SEAL REPLACEMENT KIT</b> , .7-inch bore	1				
DP26	105676	<b>Cap</b> , bleeder screw	2				
	GI64674597	<b>REAR WHEEL CYLINDER ASSEMBLY</b> , .75 inch bore, fitted to very late U.S.A. models	2				
	108756	<b>Screw</b> , bleed	2				
	GISP2770	<b>SEAL REPLACEMENT KIT</b> , .75-inch bore	1				
	105676	<b>Cap</b> , bleeder screw	2				
		<b>WHEEL CYLINDER FITTING DETAILS</b>					
	GISP2862	<b>WHEEL CYLINDER FITTING KIT</b> , includes dust cover, plates, special grease	1				
DP27	505091	<b>Plate</b> , locking, male, inner	2				
DP28	505092	<b>Plate</b> , locking, female	2				
DP29	505094	<b>Plate</b> , locking, small	2				
DP30	505093	<b>Cover</b> , dust, rubber	2				
DP31		<b>LEVER DETAILS</b> , handbrake (See Section DR.)					
DP32	GBS778	<b>Brake Shoe Set</b> , comprising two leading and two trailing shoes, brand new; not relined	1				
	GISHK1	<b>BRAKE SHOE HOLD-DOWN KIT</b>	1				
DP33	122505	<b>Pin</b> , brake shoe hold-down	4				
DP34	508818	<b>Spring</b> , brake shoe hold-down	4				
	GISRS8	<b>BRAKE SHOE RETURN SPRING KIT</b>	1				
DP35	508817	<b>Spring</b> , shoe return, adjuster end	2				
DP36	505081	<b>Spring</b> , shoe return, cylinder end	2				
DP37	210578	<b>Rear Brake Drum</b>	2				
DP38	V5435	<b>Screw</b> , countersunk, securing drums to hubs	4				

# PLATE DQ

HYDRAULIC REPAIR KITS  
—QUICK REFERENCE LISTING

## TRIUMPH TR6

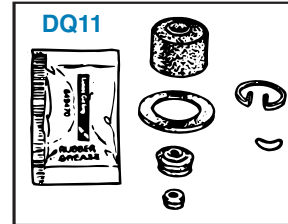
DQ7



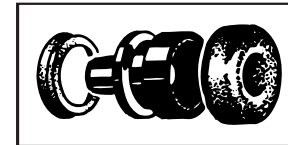
DQ8



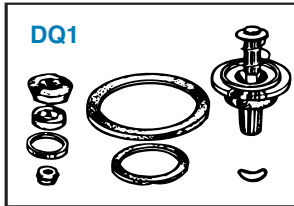
DQ11



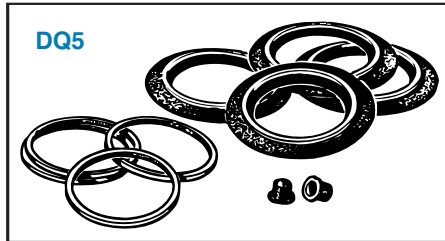
DQ12



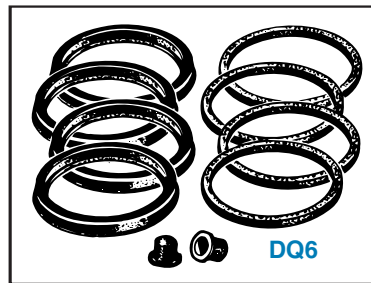
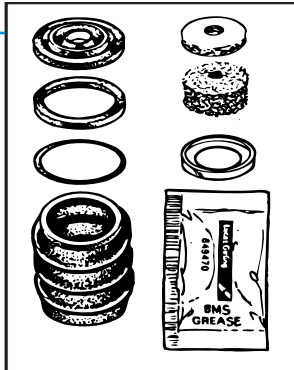
DQ1



DQ5



DQ2



DQ6

DQ13



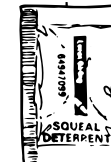
DQ14



DQ15



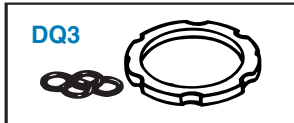
DQ16



DQ17



DQ3



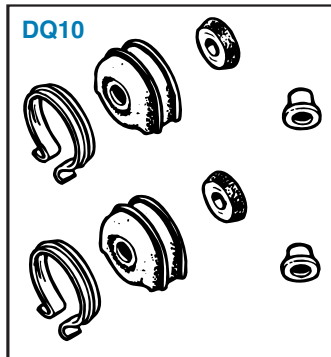
DQ4



DQ9



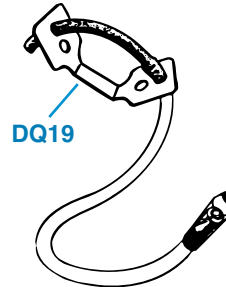
DQ10



DQ18



DQ19



# HYDRAULIC REPAIR KIT—QUICK REFERENCE LISTING

Plate No.	Part No.	Description	No. Off
<b>HYDRAULIC REPAIR KITS-BRAKES</b>			
DQ1	GISP2490	<b>Repair Kit</b> , brake master cylinder	1
DQ2	GISP2495	<b>Repair Kit</b> , minor, brake servo unit, includes seals only	1
DQ3	RFK401	<b>Repair Kit</b> , pressure differential valve, for valves having seals of circular cross-section; kit includes seals for repairing several different valves	1
	RFK426	<b>Repair Kit</b> , pressure differential valve, for valves having seals of square cross-section	1
DQ4	148809	<b>Switch</b> , electrical, pressure differential valve	1
DQ5	GISP2501	<b>Repair Kit</b> , front brake caliper, fitted up to comm. nos. CC29929 and CP26075	1
DQ6	GISP2589	<b>Repair Kit</b> , front brake caliper, fitted after comm. nos. CC29929 and CP26075	1
DQ7	GI64325561	<b>Piston</b> , front brake caliper, fitted up to comm. nos. CC29929 and CP26075	4
DQ8	GI64321880	<b>Piston</b> , front brake caliper, fitted after comm. nos. CC29929 and CP26075	4
DQ9	GISP2083	<b>Repair Kit</b> , rear wheel cylinder, .7-inch bore, fitted to all models except U.S.A.	1
	GISP2083	<b>Repair Kit</b> , rear wheel cylinder, .7-inch bore, fitted to U.S.A. models, up to 1976	1
DQ10	GISP2770	<b>Repair Kit</b> , rear wheel cylinder, .75-inch bore, fitted to U.S.A. models, late 1976	1
<b>HYDRAULIC REPAIR KITS-CLUTCH</b>			
DQ11	GISP1967	<b>Repair Kit</b> , clutch master cylinder, .75-inch bore, fitted up to body nos. 52951CC and 50910CP	1
	GISP2102	<b>Repair Kit</b> , clutch master cylinder, .7-inch bore, fitted after body nos. 52951CC and 50910CP	1
DQ12	LDSSB629	<b>Repair Kit</b> , clutch slave cylinder	1
<b>Consumables</b>			
DQ13	GILMA	<b>Brake Fluid</b> , Girling LMA, 12 oz. can	A/R
DQ14	SBF32	<b>Brake Fluid</b> , silicone, 32 oz. can	A/R
DQ15	GISP1230	<b>Grease</b> , Girling, rubber, red, per tube	A/R
DQ16	GISP1251	<b>Grease</b> , Girling, anti-squeal shims, per sachet	A/R
DQ17	GISP5066	<b>Grease</b> , Girling, brake mechanicals, blue, per tube	A/R
<b>TOOLS</b>			
DQ18	GI64947041	<b>Tube</b> , rubber, brake bleeding, Girling brand; the right tube for the job	1
DQ19	GIT20	<b>Vizibleed</b> ; Girling brand, one-person bleeding system	1
		<b>Please Note:</b> Tubing benders are not required for kink- free bending of the hydraulic pipes listed in Sections DM and DN. These 3/16-inch pipes are made of a special steel alloy which is easily bent with the hands to any required shape.	

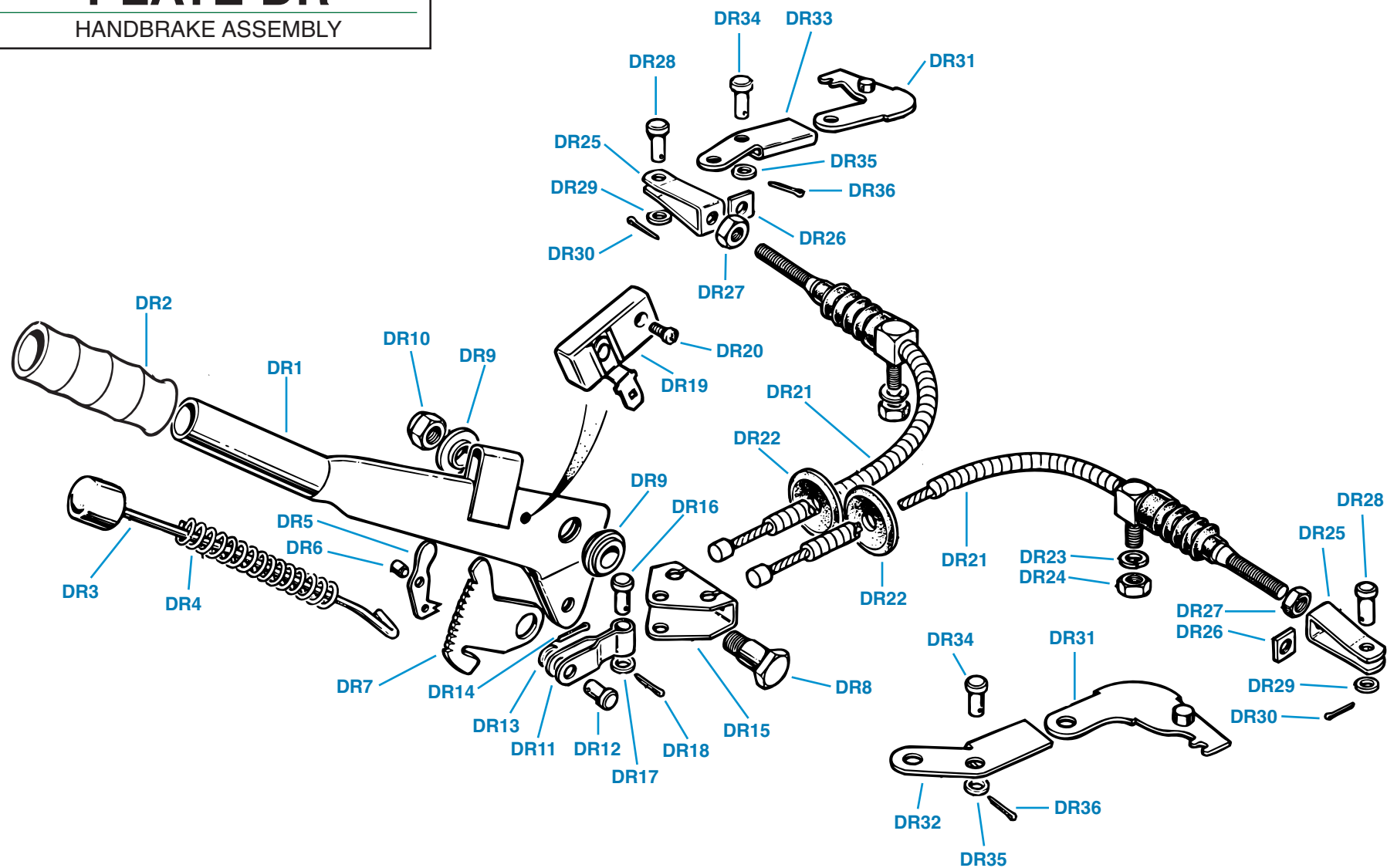
Plate No.	Part No.	Description	No. Off
-----------	----------	-------------	---------



# PLATE DR

HANDBRAKE ASSEMBLY

## TRIUMPH TR6



# HANDBRAKE ASSEMBLY

Plate No.	Part No.	Description	No. Off
	148078	<b>HANDBRAKE LEVER ASSEMBLY</b> , all models except U.S.A	1
	148078	<b>HANDBRAKE LEVER ASSEMBLY</b> , U.S.A. models, up to comm. no. CF50000	1
	UKC6905	<b>HANDBRAKE LEVER ASSEMBLY</b> , U.S.A. models, after comm. no. CF50000	1
DR1	UKC7382	<b>HANDBRAKE LEVER ASSEMBLY</b> , U.S.A. models, late 1976	1
	148080	<b>Lever Assembly</b> , handbrake, all models except U.S.A.	1
	148080	<b>Lever Assembly</b> , handbrake, U.S.A. models, up to comm. no. CF50000	1
	UKC6906	<b>Lever Assembly</b> , handbrake, U.S.A. models, after comm. no. CF50000	1
DR2	UKC7383	<b>Lever Assembly</b> , handbrake, U.S.A. models, late 1976	1
	131312	<b>Grip</b> , handbrake lever	1
	UKC3918	<b>Grip</b> , handbrake lever; listed in factory publications for late U.S.A. models, but apparently never used	1
DR3	148082	<b>Rod Assembly</b> , pawl release	1
DR4	104740	<b>Spring</b> , pawl release	1
DR5	104737	<b>Pawl</b> , handbrake	1
DR6	104738	<b>Pin</b> , fulcrum, pawl	1
DR7	148083	<b>Segment</b> , ratchet, all models except U.S.A.	1
	148083	<b>Segment</b> , ratchet, U.S.A. models, up to comm. no. CF50000	1
	UKC5971	<b>Segment</b> , ratchet, U.S.A. models, after comm. no. CF50000	1
DR8	142755	<b>Bolt</b> , fulcrum, securing handbrake lever and ratchet segment to mounting bracket	1
DR9	142754	<b>Bush</b> , nylon	2
DR10	TN3209	<b>Nut</b> , nyloc	1
DR11	140374	<b>Link</b> , compensator, all models except U.S.A.	1
	140374	<b>Link</b> , compensator, U.S.A. models, up to comm. no. CF50000	1
	UKC7193	<b>Link Assembly</b> , compensator, U.S.A. models, after comm. no. CF50000	1
		<b>HARDWARE</b> , securing compensator link to handbrake lever	
DR12	104750	<b>Pin</b> , joint	1
DR13	WP35	<b>Washer</b> , plain	1
DR14	PC5	<b>Pin</b> , cotter	1
DR15	140375	<b>Compensator Sector</b>	1
		<b>HARDWARE</b> , securing compensator sector to compensator link	
DR16	PJ8713	<b>Pin</b> , joint	1
DR17	WP7	<b>Washer</b> , plain	1
DR18	PC7	<b>Pin</b> , cotter	1
DR19	144432	<b>Switch</b> , handbrake warning light, U.S.A. models only, after comm. no. CF50000	1
DR20	AB604021	<b>Screw</b> , securing switch to handbrake lever	1

Plate No.	Part No.	Description	No. Off
DR21	140373	<b>Handbrake Cable Assembly</b> , metal sheath	2
	TKC248	<b>Handbrake Cable Assembly</b> , plastic coated sheath, fitted to later models for some markets (e.g. U.S.A., Germany)	2
DR22	612715	<b>Grommet</b> , sealing cable holes in rear heel board	2
		<b>HARDWARE</b> , securing cables to trailing arms	
DR23	WL207	<b>Washer</b> , lock	2
DR24	HN2007	<b>Nut</b>	2
DR25	138247	<b>Fork End</b> , cable, linking cables to levers mounted behind wheel cylinders	2
		<b>HARDWARE</b> , securing fork ends to cables	
DR26	NQ2707	<b>Nut</b> , square	2
DR27	JN2107	<b>Nut</b> , jam	2
		<b>HARDWARE</b> , securing fork ends to wheel cylinder levers	
DR28	PJ8807	<b>Pin</b> , joint	2
DR29	WP8	<b>Washer</b> , plain	2
DR30	PC9	<b>Pin</b> , cotter	2
DR31	157672	<b>Lever</b> , brake shoe operating, mounted behind wheel cylinders	2
DR32	UKC7195	<b>Extension</b> , brake shoe operating lever, L.H., U.S.A. models, after comm. no. CF50000	1
DR33	UKC7194	<b>Extension</b> , brake shoe operating lever, R.H., U.S.A. models, after comm. no. CF50000	1
		<b>HARDWARE</b> , securing extensions to brake shoe operating levers	
DR34	PJ8807	<b>Pin</b> , joint	2
DR35	WP8	<b>Washer</b> , plain	2
DR36	PC9	<b>Pin</b> , cotter	2