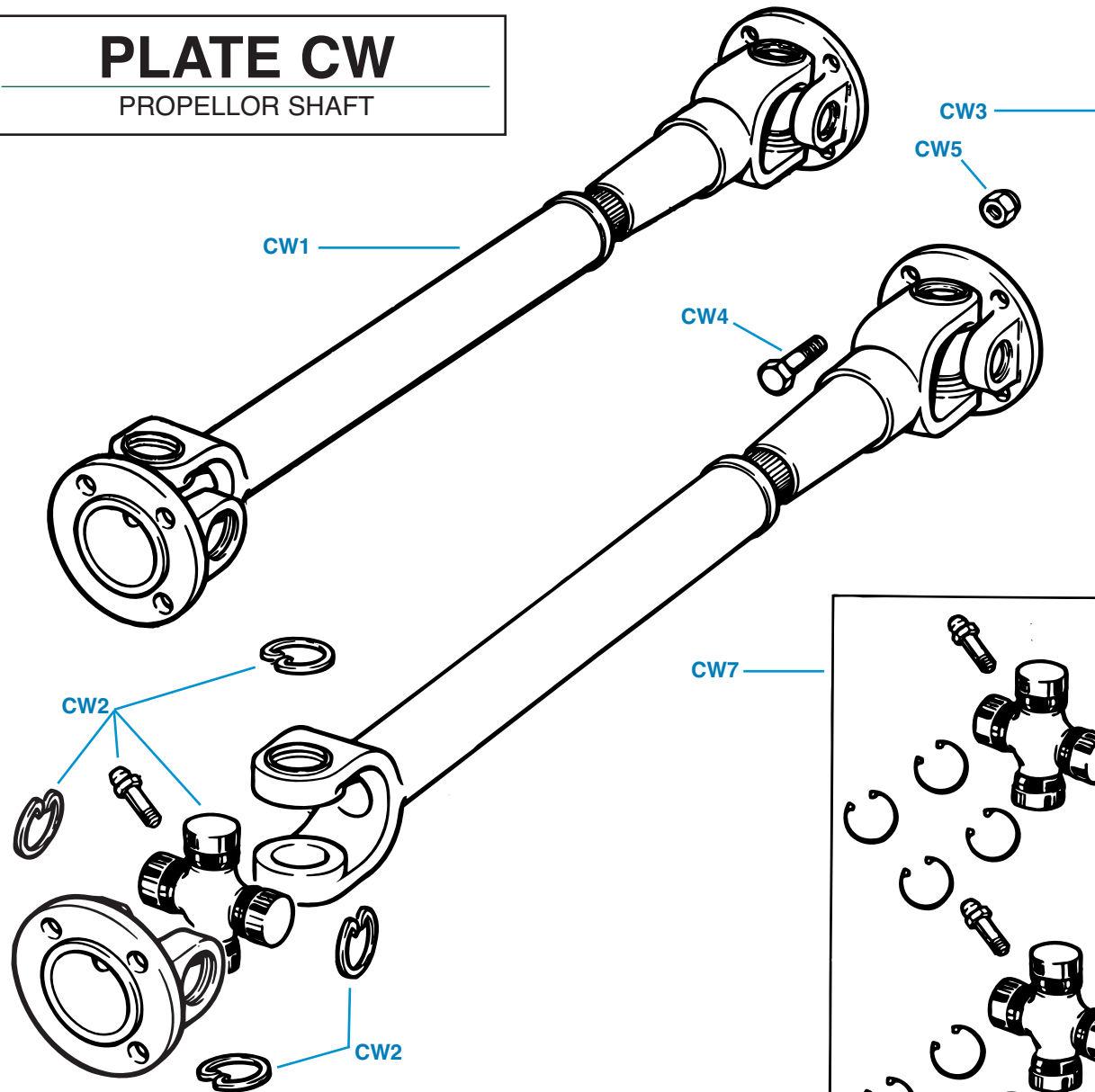
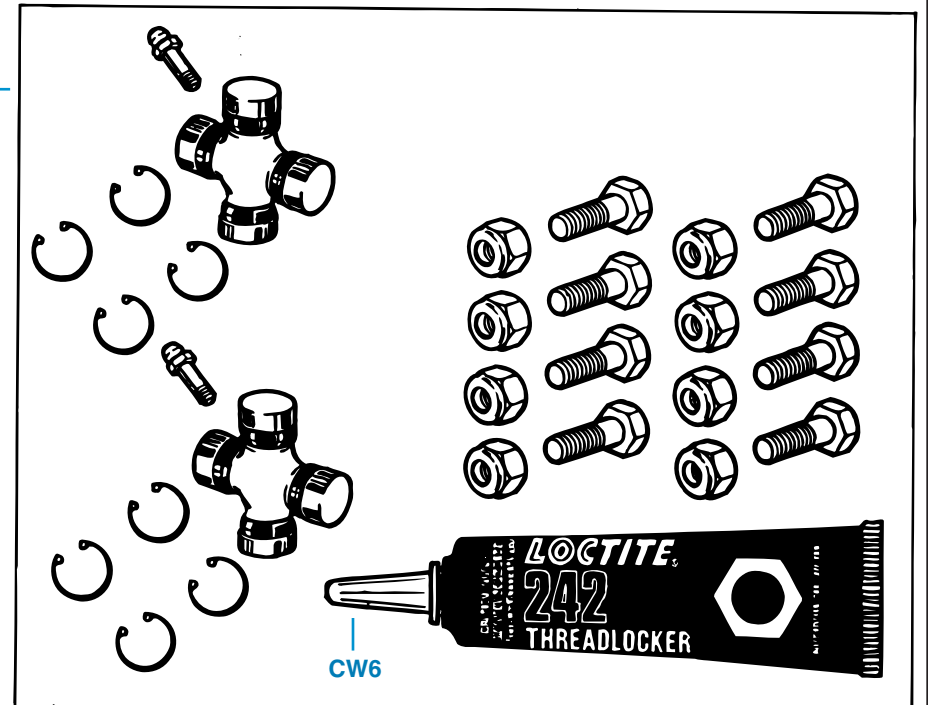
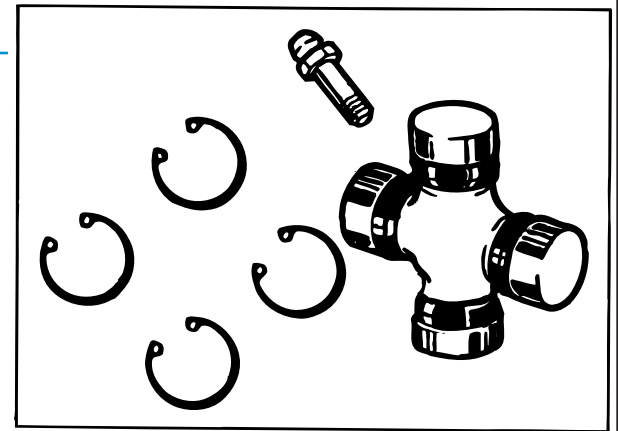


# PLATE CW

PROPELLOR SHAFT



## TRIUMPH TR6



# PROPELLOR SHAFT

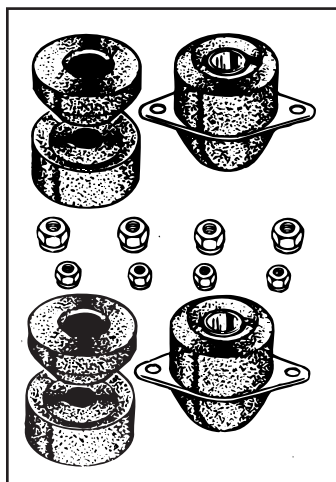
Plate No.	Part No.	Description	No. Off
CW1	208075	<b>PROPELLOR SHAFT ASSEMBLY</b>	1
CW2	134778	<b>Universal Joint Assembly</b> , original-equipment brand	2
CW3	QL403	<b>Universal Joint Assembly</b> , aftermarket brand (Excellent quality.)	2
		<b>HARDWARE</b> , securing propellor shaft to gearbox and rear axle flanges	
CW4	107960	<b>Bolt</b>	8
CW5	TN3209	<b>Nut</b> , nyloc	8
	GHF243	<b>Nut</b> , Cleveloc; alternative to TN3209	8
CW6	TRFC103	<b>Loctite 242 Threadlocker</b> , .20 fl. oz. tube (Recommended for use on all prop shaft nuts and bolts)	1
CW7	RFK399	<b>PROPELLOR SHAFT REPAIR KIT</b>	1
	QL403	<b>Universal Joint Assembly</b>	2
	107960	<b>Bolt</b> , flanges	8
	TN3209	<b>Nut</b> , nyloc, flanges	8
	TRFC103	<b>Loctite 242 Threadlocker</b> , .20 fl. oz. tube	1
	RFK328	<b>UNIVERSAL JOINT REPLACEMENT KIT</b> , complete car; for rebuilding propellor shaft and both rear axle shafts	1
	QL403	<b>Universal Joint Assembly</b>	6
	107960	<b>Bolt</b> , flange	16
	TN3209	<b>Nut</b> , nyloc, flanges	16
	YN2908	<b>Nut</b> , nyloc, hub flanges	12
	TRFC103	<b>Loctite 242 Threadlocker</b> , .20 fl. oz. tube	1

Plate No.	Part No.	Description	No. Off
-----------	----------	-------------	---------

# PLATE CX

DIFFERENTIAL MOUNTINGS

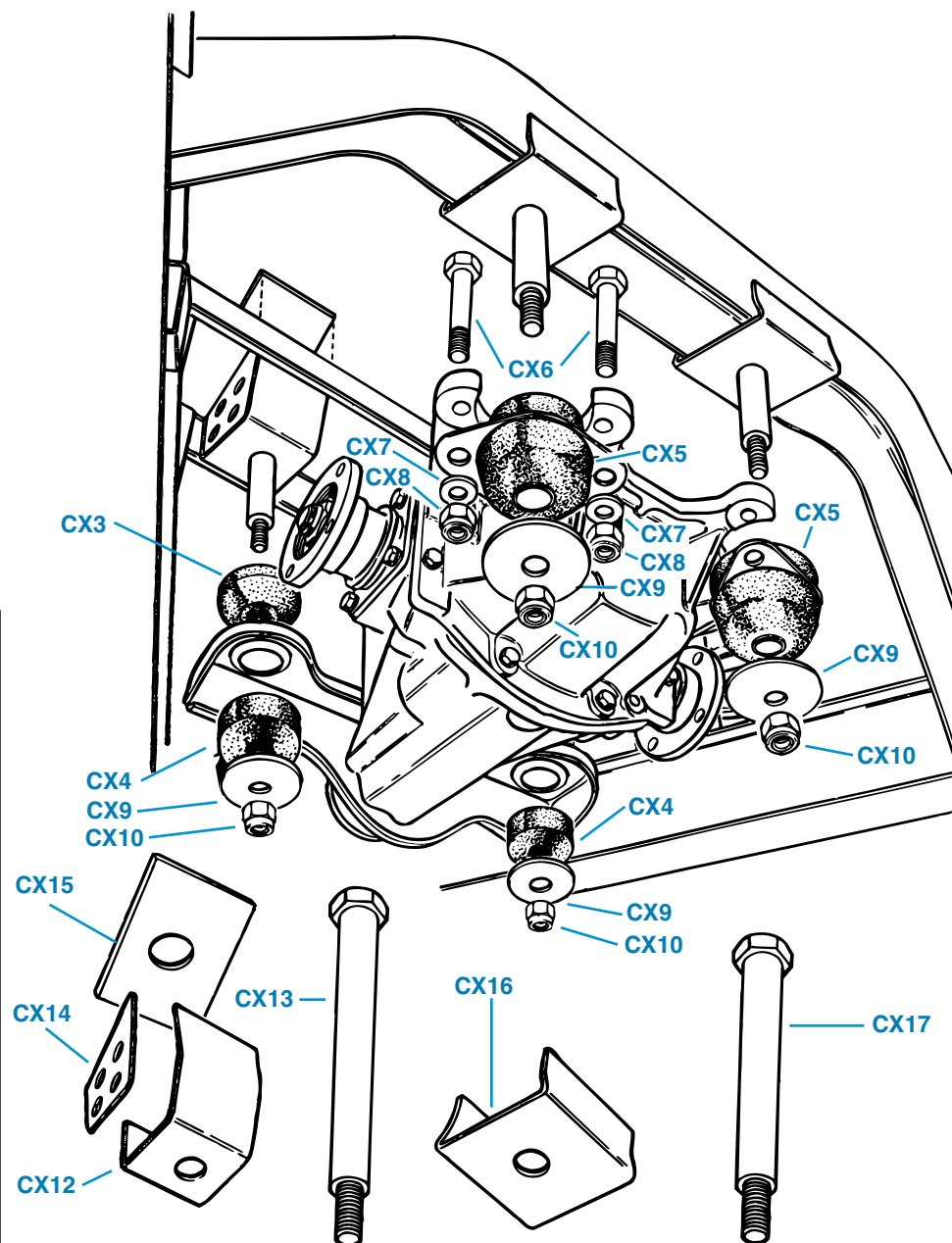
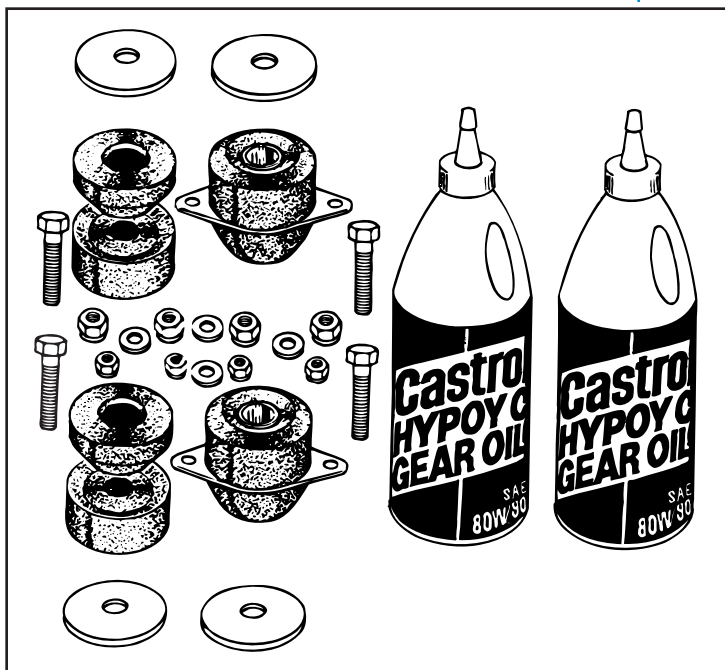
## TRIUMPH TR6



CX1

CX11

CX2



# DIFFERENTIAL MOUNTINGS

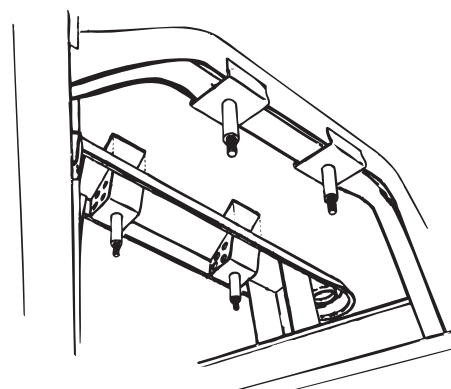
Plate No.	Part No.	Description	No. Off
CX1	DMK6	<b>DIFFERENTIAL MOUNTING KIT</b>	1
	134235	<b>Mounting</b> , front, upper	2
	134236	<b>Mounting</b> , front, lower	2
	147783	<b>Mounting Assembly</b> , rear	2
	TN3208	<b>Nut</b> , nyloc	4
	TN3209	<b>Nut</b> , nyloc	4
CX2	RFK131	<b>DIFFERENTIAL REPLACEMENT KIT</b> , including all components necessary for installing a differential after a major overhaul (with all hardware)	1
	134235	<b>Mounting</b> , front, upper	2
	134236	<b>Mounting</b> , front, lower	2
	147783	<b>Mounting Assembly</b> , rear	2
	134234	<b>Washer</b> , special, large, differential mounting	4
	HB811	<b>Bolt</b> , securing rear mounting assemblies	4
	WM58	<b>Washer</b> , plain	4
	TN3208	<b>Nut</b> , nyloc	4
	TN3209	<b>Nut</b> , nyloc	4
	CAHYP8090/01	<b>Castrol Hypoy Gear Oil</b> (one quart container)	2
	RFP83	<b>Instruction Sheet</b> , TR250, TR6 differential mounting	1
		<b>COMPONENT IDENTIFICATION</b>	
	CX3	<b>Mounting</b> , rubber, front, upper	2
	CX4	<b>Mounting</b> , rubber, front, lower	2
	CX5	<b>Mounting Assembly</b> , rear	2
CX6	HB811	<b>Bolt</b>	4
	CX7	<b>Washer</b> , plain	4
	CX8	<b>Nut</b> , nyloc	4
	CX9	<b>Washer</b> , special, large, differential mounting	4
	CX10	<b>Nut</b> , nyloc, securing differential to special studs welded to chassis frame	4
	CX11	<b>Castrol Hypoy Gear Oil</b> (one quart plastic container)	A/R
		<b>Note:</b> Rear Axle Capacity is as follows: 2.7 U.S. pints; 2.25 Imperial pints; 1.27 Liters	

Plate No.	Part No.	Description	No. Off
		<b>CHASSIS MOUNTING REPAIR</b>	
	147670	<b>MOUNTING BRACKET ASSEMBLY</b> , differential, front	2
CX12	140009	<b>Mounting Bracket</b>	2
CX13	147671	<b>Bolt</b>	2
CX14	SLP118	<b>Reinforcement</b> , for boxing in front bracket	4
CX15	SLP119	<b>Reinforcement</b> , rear suspension cross-member, around upper end of front mounting bolt	2
	147401	<b>MOUNTING BRACKET ASSEMBLY</b> , differential, rear	2
CX16	140051	<b>Mounting Bracket</b>	2
CX17	147400	<b>Bolt</b>	2

## TECHNICAL NOTE:

Whenever the differential unit is removed, it is important to check the condition of the chassis frame mounting points, as these sometimes fail in service.

The R.H. front mounting point fails most often, probably as a result of the stresses placed upon the frame by engine torque. The first indication of this problem is a "clunk" anytime the car is moved either forward or backward from the stopped position, just as the clutch is engaged. A simple test for this problem is to slowly move the car backward and forward under power. In pronounced cases, you will hear a "clunk" each time you engage the clutch. The first manifestation of this problem is a crack across the bracket which supports the R.H. front differential mounting bolt, and at this point the problem is easily resolved by simply welding the crack. To permanently solve this problem, even if the car is subjected to hard use, you can reinforce or replace the bracket and even "box" it in per the illustration in this section. Any good welding shop can complete these repairs at a reasonable cost.

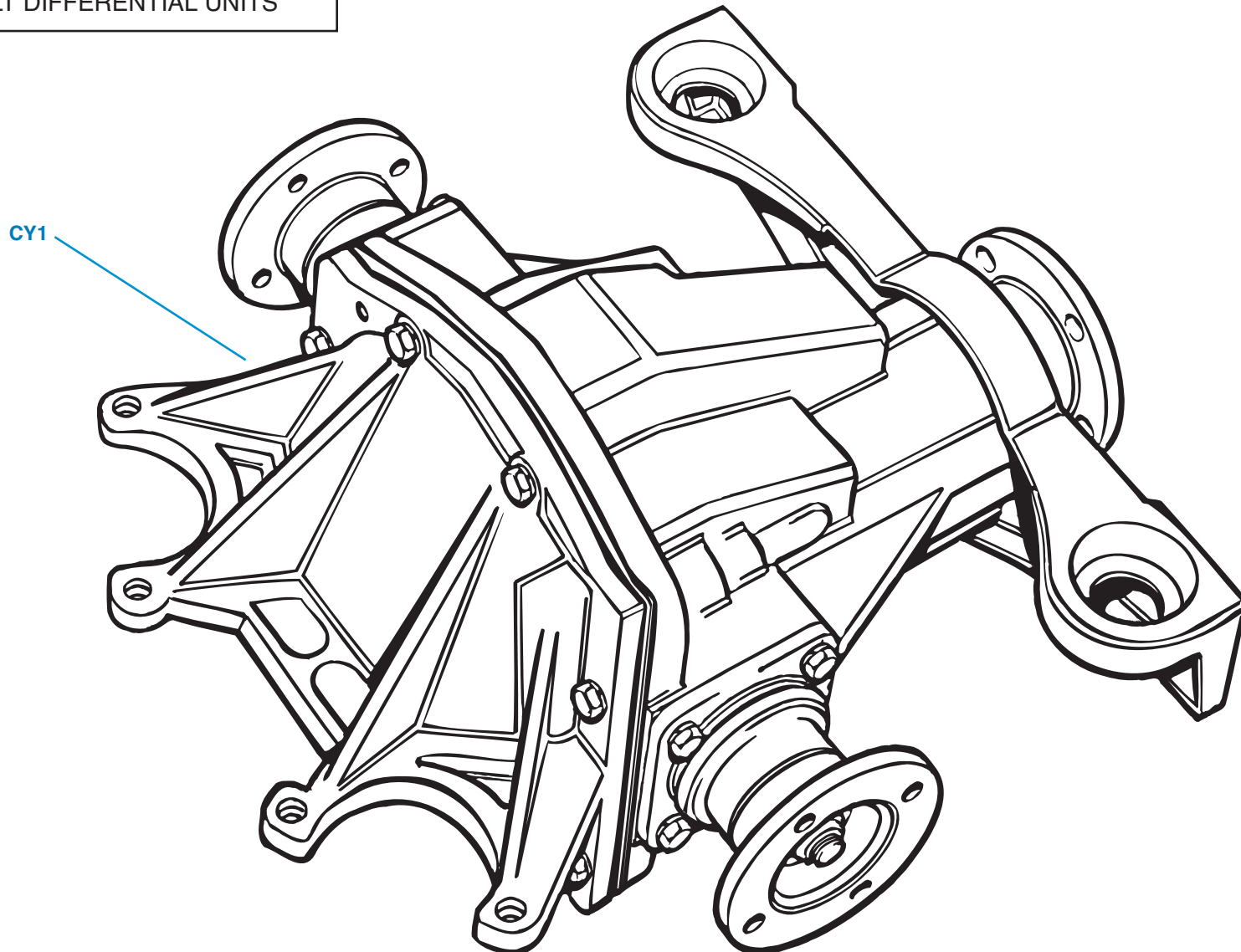


If the problem of a cracked mounting is not attended to at the early "clunk" stage, then additional stress will be placed upon the chassis frame at the point where the upper end of the bolt is welded to the rear suspension crossmember. Sooner rather than later, stress cracks will appear at this point, adding to the expense of the repair and increasing the risk of additional problems and failure on the road.

# PLATE CY

REBUILT DIFFERENTIAL UNITS

TRIUMPH TR6



# REBUILT DIFFERENTIAL UNITS

Plate No.	Part No.	Description	No. Off
-----------	----------	-------------	---------

The Roadster Factory offers rebuilt differential units on an exchange basis. If your old unit does not accompany your order, then you must pay the core charge which is listed along with the price of the rebuilt unit in our current price list. The core charge will be refunded upon receipt of a rebuildable core unit.

Because of the shortage of new components at the time of writing, core units must contain a usable crown wheel and pinion set to qualify as rebuildable and to receive a full refund of the core charge. Therefore, it pays to have your unit rebuilt when it is beginning to show wear rather than after it has suffered a failure in service.

We shall be happy to rebuild your old unit in our shop if you prefer to keep your original serial number. This will be done at the price of a standard rebuilt unit, provided that your old unit contains an acceptable crown wheel and pinion set and other critical components. If you send your old unit for rebuilding make sure that it is so marked. Your old unit will be evaluated upon receipt, and you will be contacted for further instructions based upon the results of the evaluation.

Our rebuilding process includes disassembly, sandblasting of exterior surfaces to remove old paint and rust, drilling and tapping for an oil drain plug, thorough cleaning of all components, rigid checking of all dimensions and tolerances, replacement of all bearings, seals, and worn components, reassembly to new specifications, and painting of finished units.

Differential units rebuilt by The Roadster Factory are guaranteed for twelve-thousand miles or twelve months, whichever comes first. Guarantees are void if the vehicle is used in competition, if the unit is run without being filled with the specified oil, if the unit is incorrectly installed, or if the unit is completely or partially disassembled by anyone other than The Roadster Factory. In case of failure within the warranty period, please telephone for instructions on how to handle your claim. Failures are extremely rare and will be handled accordingly. Guarantee does not include removal or replacement, failure of related components, or any amount higher than the original purchase price.

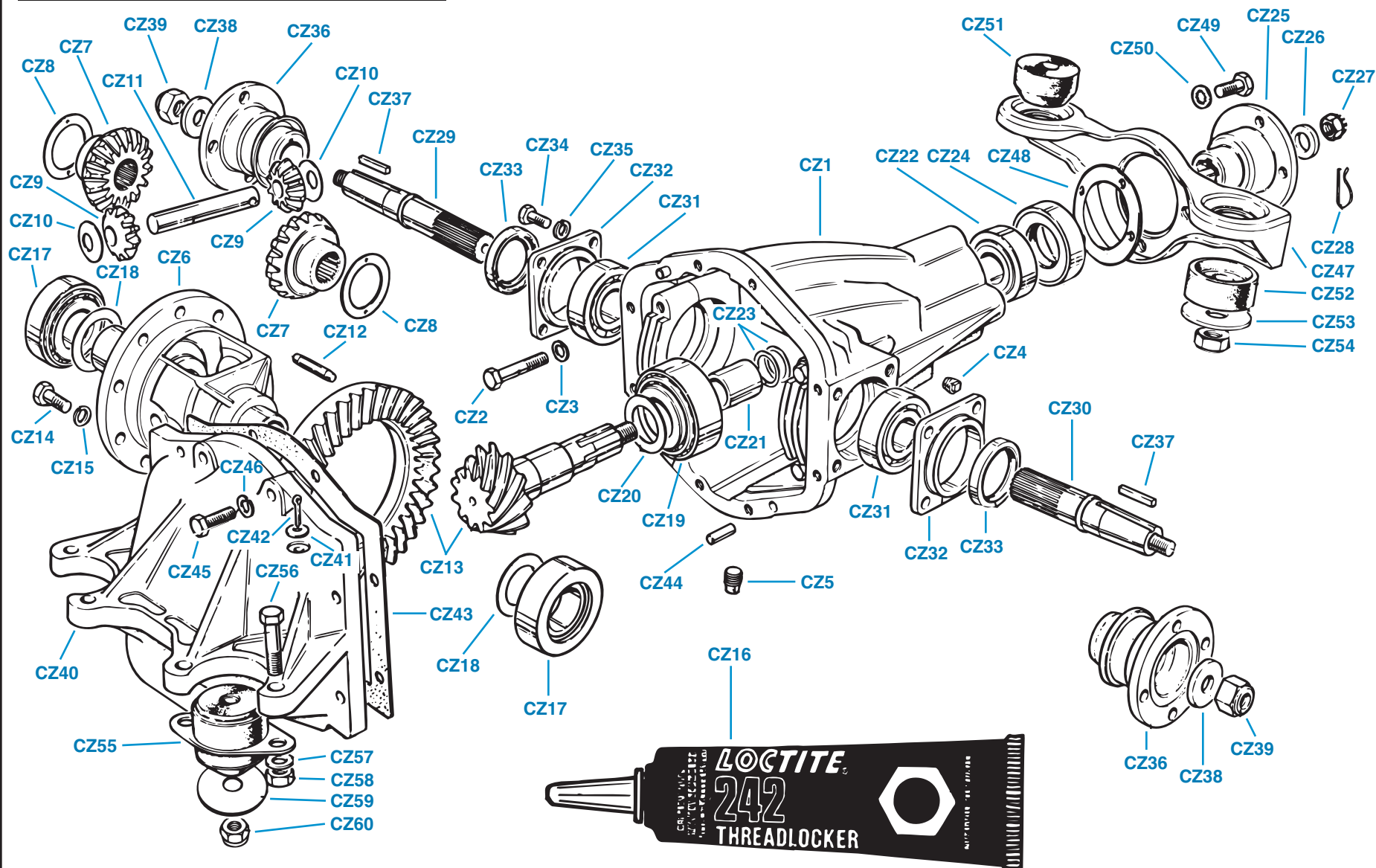
CY1	312060R	<b>FACTORY REBUILT DIFFERENTIAL UNIT</b> , 1 TO 3.7 ratio, carb models, fitted up to mid-1972	1
	313129R	<b>FACTORY REBUILT DIFFERENTIAL UNIT</b> , 1 to 3.7 ratio, carb models, fitted after mid-1972	1
	312061R	<b>FACTORY REBUILT DIFFERENTIAL UNIT</b> , 1 to 3.45 ratio, P.I. models, fitted up to mid-1972	1
	313130R	<b>FACTORY REBUILT DIFFERENTIAL UNIT</b> , 1 to 3.45 ratio, P.I. models, fitted after mid-1972	1
		<b>Please Note:</b> Other gear ratios, non-slip options, and other custom work is offered, depending upon availability of components. Prices and availability will be quoted upon application.	

Plate No.	Part No.	Description	No. Off
-----------	----------	-------------	---------

# PLATE CZ

DIFFERENTIAL DETAILS—EARLY UNIT

## TRIUMPH TR6



# DIFFERENTIAL DETAILS—EARLY UNIT

Plate No.	Part No.	Description	No. Off
<b>REAR AXLE COMPONENTS</b> , fitted up to mid-1972 approx.			
CZ1	305815	<b>HOUSING ASSEMBLY</b> , rear axle center	1
		Cap, bearing	NSS
		<b>HARDWARE</b> , securing bearing caps to axle housing	
CZ2	100878	Bolt	4
CZ3	WL209	Washer, lock	4
CZ4	114774	Plug, oil level and oil filler	1
CZ5	114774	Plug, oil drain, if fitted; TRF drills and taps cases of all rebuilt units to take oil drain plug	1
CZ6	302155	Carrier, differential	1
CZ7	113187	Gear, differential, side, sixteen teeth	2
	153384	Gear, differential, side, sixteen teeth; alternative to 113187 if fitted in pairs	2
CZ8	102801	Washer, thrust, between side gears and carrier	2
CZ9	113188	Gear, differential, pinion, ten teeth	2
	153385	Gear, differential, pinion, ten teeth; alternative to 113188 if fitted in pairs	2
		<b>SPHERICAL THRUST WASHERS</b> , adjusting clearance of differential pinion gears	
CZ10	56793	Washer, .0465 to .0495 inch thick	A/R
	142165	Washer, .049 to .051 inch thick	A/R
	139951	Washer, .051 to .053 inch thick	A/R
	142166	Washer, .053 to .055 inch thick	A/R
	139952	Washer, .055 to .057 inch thick	A/R
	160373	Washer, .057 to .059 inch thick	A/R
	139953	Washer, .059 to .061 inch thick	A/R
	160374	Washer, .061 to .063 inch thick	A/R
	139954	Washer, .063 to .065 inch thick	A/R
	160375	Washer, .065 to .067 inch thick	A/R
	139955	Washer, .067 to .069 inch thick	A/R
	160376	Washer, .069 to .071 inch thick	A/R
	139956	Washer, .071 to .073 inch thick	A/R
CZ11	100844	Pin, cross, differential	1
CZ12	111215	Pin, locating, cross pin in differential	1
CZ13	502127	Crown Wheel and Pinion Set, 1 to 3.7 ratio, carb models	1
	516398	Crown Wheel and Pinion Set, 1 to 3.45 ratio, P.I. models	1
		<b>ALTERNATIVE CROWN WHEEL AND PINION SETS</b> , for competition and other purposes	
	505014	Crown Wheel and Pinion Set, 1 to 4.1 ratio	1
	503924	Crown Wheel and Pinion Set, 1 to 4.55 ratio	1
	502523	Crown Wheel and Pinion Set, 1 to 4.3 ratio	1
	515709	Crown Wheel and Pinion Set, 1 to 4.875	1

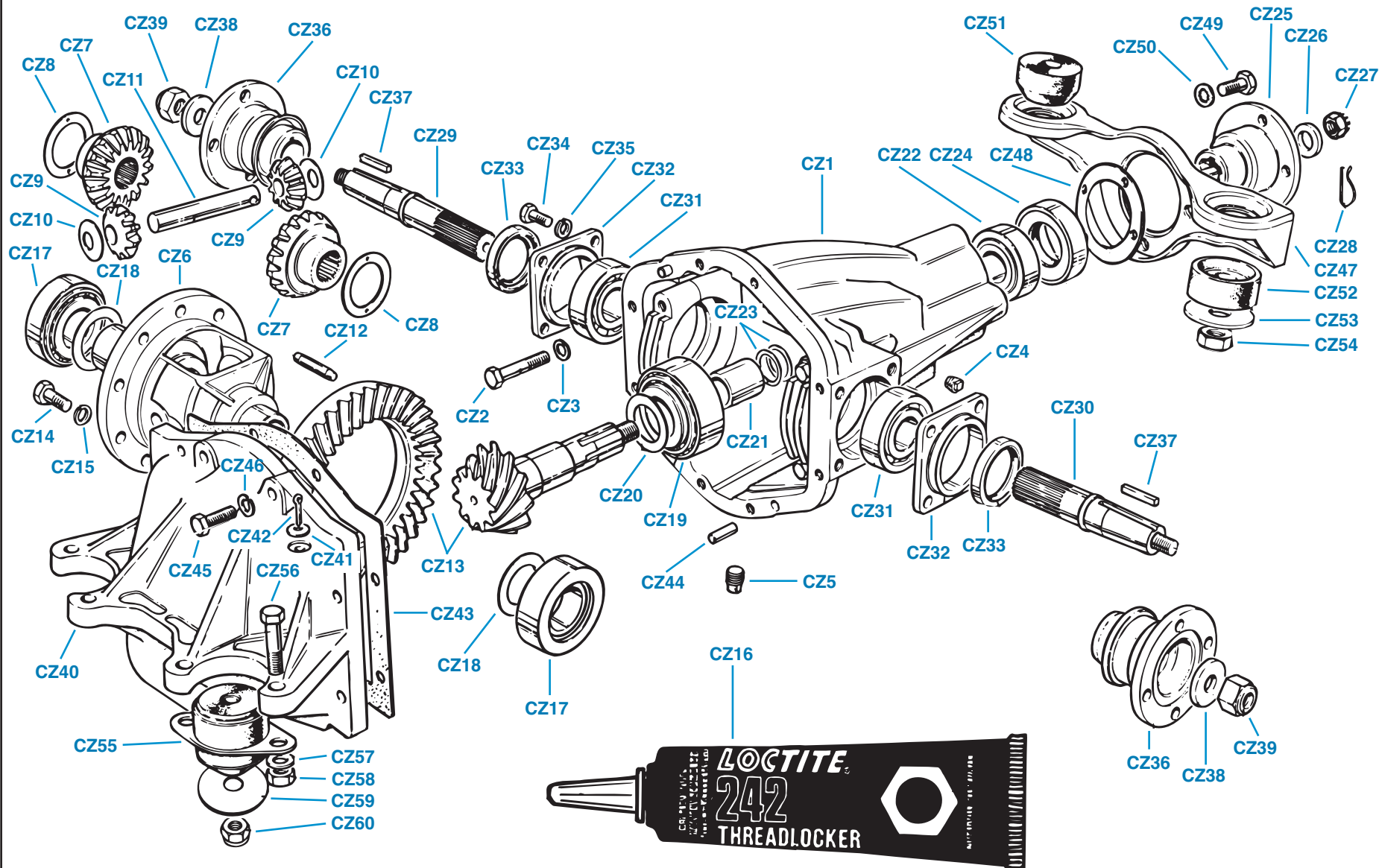
Plate No.	Part No.	Description	No. Off
<b>REAR AXLE COMPONENTS-Continued</b>			
		<b>HARDWARE</b> , securing crown wheel to differential carrier	
CZ14	110737	Bolt	10
CZ15	118977	Washer, lock	10
CZ16	TRFC103	Loctite 242 Threadlocker, .20 fl. oz. tube	1
CZ17	110515	Bearing, differential side	2
		<b>SHIMS</b> , adjusting clearance of differential side bearings	
CZ18	100894	Shim, .003 inch thickness	A/R
	100895	Shim, .005 inch thickness	A/R
	100896	Shim, .010 inch thickness	A/R
CZ19	100897	BEARING, pinion head	1
		<b>WASHERS</b> , adjusting fore and aft location of pinion, fitted between pinion head and pinion head bearing (These were used in production at the factory and not supplied as spare parts.)	
CZ20	140643	Washer, adjusting, .0300 inch thickness	1
	140644	Washer, adjusting, .0315 inch thickness	1
	140645	Washer, adjusting, .0330 inch thickness	1
	140646	Washer, adjusting, .0345 inch thickness	1
	140647	Washer, adjusting, .0360 inch thickness	1
	140648	Washer, adjusting, .0375 inch thickness	1
	140649	Washer, adjusting, .0390 inch thickness	1
	140650	Washer, adjusting, .0405 inch thickness	1
	140651	Washer, adjusting, .0420 inch thickness	1
	140652	Washer, adjusting, .0435 inch thickness	1
	140653	Washer, adjusting, .0450 inch thickness	1
	140654	Washer, adjusting, .0465 inch thickness	1
	140655	Washer, adjusting, .0480 inch thickness	1
	140656	Washer, adjusting, .0495 inch thickness	1
	140657	Washer, adjusting, .0510 inch thickness	1
		<b>SHIMS</b> , adjusting fore and aft location of pinion, fitted between front of pinion head bearing race and rear axle center housing (These were not used in production at the factory, but they are supplied as spare parts.)	
	100965	Shim, .003 inch thickness	A/R
	100966	Shim, .005 inch thickness	A/R
	100967	Shim, .010 inch thickness	A/R
CZ21	100846	Spacer, between pinion head bearing and pinion shank bearing	1
CZ22	100422	Bearing, pinion shank	1

(Continued on next page.)

# PLATE CZ

DIFFERENTIAL DETAILS—EARLY UNIT

## TRIUMPH TR6



# DIFFERENTIAL DETAILS—EARLY UNIT

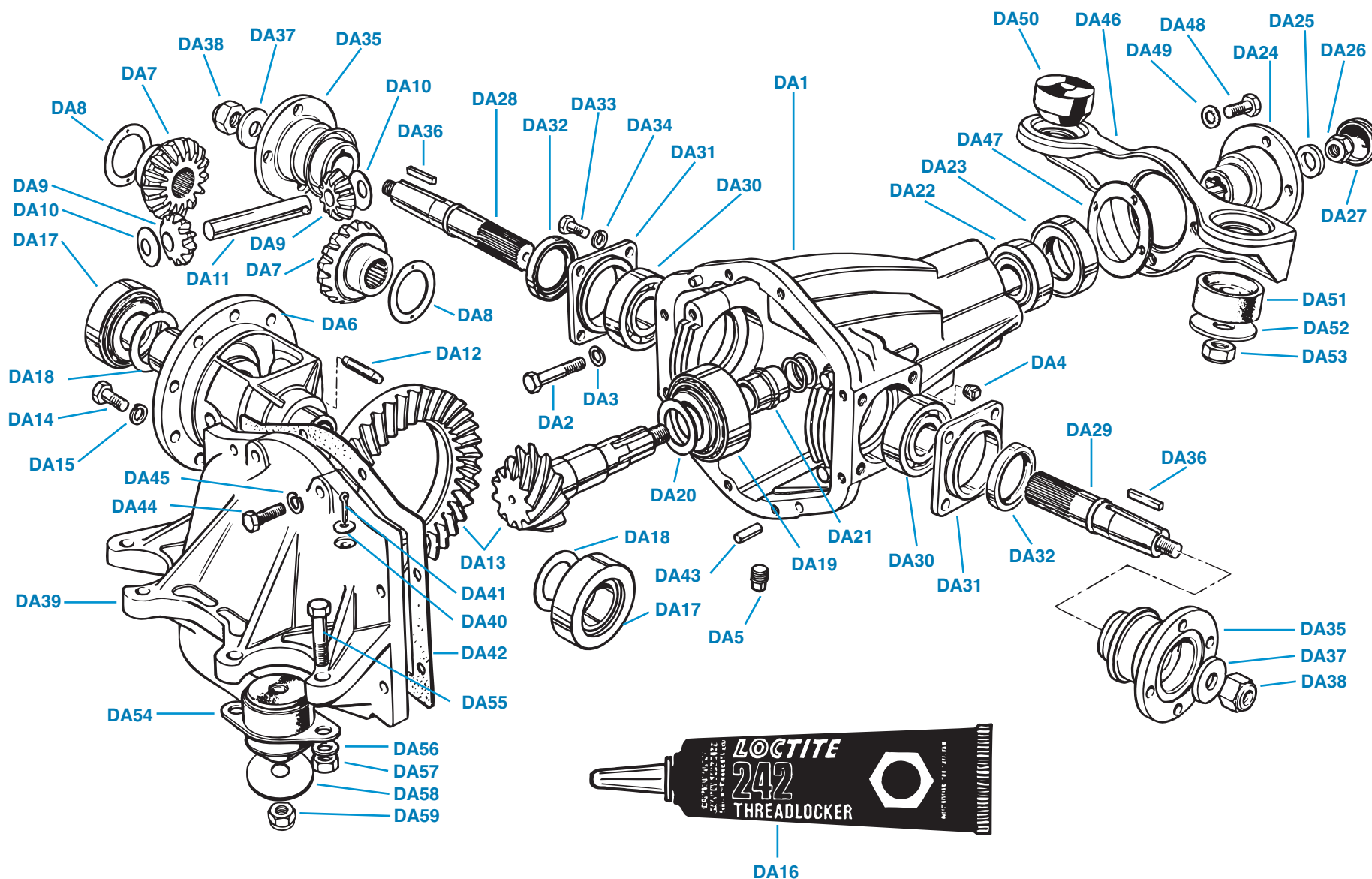
Plate No.	Part No.	Description	No. Off
<b>REAR AXLE COMPONENTS—Continued</b>			
		<b>SHIMS</b> , adjusting pre-load on pinion shank bearing	
CZ23	100562	<b>Shim</b> , .003 inch thickness	A/R
	100563	<b>Shim</b> , .005 inch thickness	A/R
	100564	<b>Shim</b> , .010 inch thickness	A/R
CZ24	140337	<b>Oil Seal Assembly</b> , front of casing	1
CZ25	138105	<b>Flange</b> , pinion	1
		<b>Please Note:</b> The front mounting bracket must be installed before the pinion flange is finally secured.	
		<b>HARDWARE</b> , securing pinion flange onto pinion shaft	
CZ26	115990	<b>Washer</b> , plain	1
CZ27	112635	<b>Nut</b> , slotted	1
CZ28	514773	<b>Wire</b> , locking, soft iron, 14 swg. x 4 inches long	1
<b>INNER AXLE SHAFT DETAILS</b>			
CZ29	149378	<b>Inner Axle Shaft</b> , L.H.	1
CZ30	149379	<b>Inner Axle Shaft</b> , R.H.	1
CZ31	134465	<b>Bearing</b> , inner axle shaft	2
CZ32	128638	<b>Housing</b> , oil seal, inner axle shaft	2
CZ33	138523	<b>Seal</b> , oil, inner axle shaft	2
		<b>HARDWARE</b> , securing oil seal housing to axle housing	
CZ34	HU806	<b>Screw</b> , set	8
CZ35	WL208	<b>Washer</b> , lock	8
CZ36	149409	<b>FLANGE ASSEMBLY</b> , driving, inner	2
	134450	<b>Stoneguard</b> , welded to flange	2
		<b>HARDWARE</b> , securing driving flanges to inner axle shafts	
CZ37	143280	<b>Key</b>	2
CZ38	139043	<b>Washer</b> , plain	2
CZ39	138563	<b>Nut</b> , nyloc	2
CZ40	149826	<b>REAR COVER AND MOUNTING BRACKET</b>	1
CZ41	118826	<b>Plug</b> , core, fitted in breather hole	1
CZ42	510408	<b>Pin</b> , cotter, breather	1
CZ43	134480	<b>Gasket</b> , between rear cover and axle housing (Also coat gasket on both sides with Wellseal gasket cement.)	1
		<b>HARDWARE</b> , securing rear cover to axle housing	
CZ44	140419	<b>Dowel</b> , locating cover	2
CZ45	HU808	<b>Screw</b> , set	8
CZ46	WL208	<b>Washer</b> , lock	8
CZ47	211793	<b>FRONT AXLE MOUNTING PLATE ASSEMBLY</b>	1
CZ48	140007	<b>Washer</b> , distance, welded to plate	1

Plate No.	Part No.	Description	No. Off
<b>REAR AXLE COMPONENTS—Continued</b>			
		<b>HARDWARE</b> , securing front mounting plate to axle housing	
CZ49	132856	<b>Bolt</b> , special (Don't substitute.)	4
CZ50	WN710	<b>Washer</b> , shakeproof	4
		<b>MOUNTING DETAILS</b> , rear axle center assembly to chassis frame	
	147671	<b>Bolt</b> , mounting, axle center, front, welded to chassis frame	2
CZ51	134235	<b>Mounting</b> , rubber, front, upper	2
CZ52	134236	<b>Mounting</b> , rubber, front, lower	2
		<b>HARDWARE</b> , securing front mountings and differential to chassis frame	
CZ53	134234	<b>Washer</b> , special, large	2
CZ54	TN3209	<b>Nut</b> , nyloc	2
	147400	<b>Bolt</b> , mounting, axle center, rear, welded to chassis frame	2
CZ55	147783	<b>Mounting Assembly</b> , axle center, rear	2
		<b>HARDWARE</b> , securing mounting assembly to axle cover and mounting bracket assembly	
CZ56	HB811	<b>Bolt</b>	4
CZ57	WM58	<b>Washer</b> , plain	4
CZ58	TN3208	<b>Nut</b> , nyloc	4
		<b>HARDWARE</b> , securing rear mountings and differential to chassis frame	
CZ59	134234	<b>Washer</b> , special	2
CZ60	TN3209	<b>Nut</b> , nyloc	2

# PLATE DA

DIFFERENTIAL DETAILS—LATER UNIT

## TRIUMPH TR6



# DIFFERENTIAL DETAILS—LATER UNIT

Plate No.	Part No.	Description	No. Off
<b>REAR AXLE COMPONENTS</b> , fitted after mid-1972 approx.			
DA1	305815	<b>HOUSING ASSEMBLY</b> , rear axle center	1
		Cap, bearing	NSS
		<b>HARDWARE</b> , securing bearing caps to axle housing	
DA2	100878	Bolt	4
DA3	WL209	Washer, lock	4
DA4	114774	Plug, oil level and oil filler	1
DA5	114774	Plug, oil drain, not fitted; TRF drills and taps cases of all rebuilt units to take drain plugs	1
DA6	302155	Carrier, differential	1
DA7	153384	Gear, differential, side, sixteen teeth	2
DA8	102801	Washer, thrust, between side gears and carrier	2
DA9	153385	Gear, differential, pinion, ten teeth	2
		<b>SPHERICAL THRUST WASHERS</b> , adjusting clearance of differential pinion gears	
DA10	56793	Washer, .0465 to .0495 inch thick	A/R
	142165	Washer, .049 to .051 inch thick	A/R
	139951	Washer, .051 to .053 inch thick	A/R
	142166	Washer, .053 to .055 inch thick	A/R
	139952	Washer, .055 to .057 inch thick	A/R
	160373	Washer, .057 to .059 inch thick	A/R
	139953	Washer, .059 to .061 inch thick	A/R
	160374	Washer, .061 to .063 inch thick	A/R
	139954	Washer, .063 to .065 inch thick	A/R
	160375	Washer, .065 to .067 inch thick	A/R
	139955	Washer, .067 to .069 inch thick	A/R
	160376	Washer, .069 to .071 inch thick	A/R
	139956	Washer, .071 to .073 inch thick	A/R
DA11	100844	Pin, cross, differential	1
DA12	111215	Pin, locating cross pin in differential	1
DA13	UKC548	Crown Wheel and Pinion Set, 1 to 3.7 ratio, carb models	1
	UKC547	Crown Wheel and Pinion Set, 1 to 3.45 ratio, P.I. models only	1
		<b>HARDWARE</b> , securing crown wheel to differential carrier	
DA14	110737	Bolt	10
DA15	118977	Washer, lock	10
DA16	TRFC103	Loctite 242 Threadlocker, .20 fl. oz. tube	1
DA17	110515	Bearing, differential side	2
		<b>SHIMS</b> , adjusting clearance of differential side bearings	
DA18	100894	Shim, .003 inch thickness	A/R
	100895	Shim, .005 inch thickness	A/R
	100896	Shim, .010 inch thickness	A/R
DA19	100897	Bearing, pinion head	1

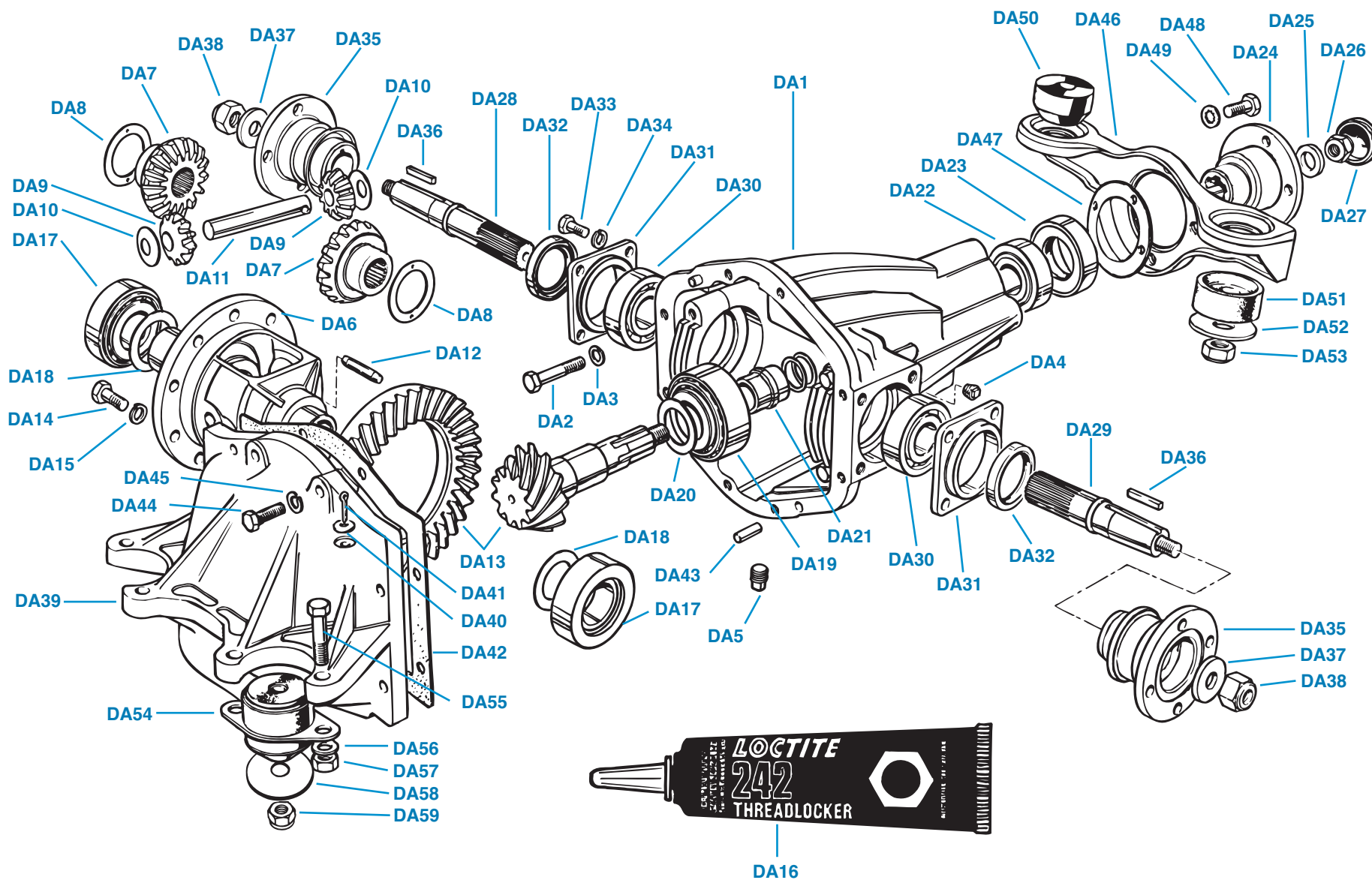
Plate No.	Part No.	Description	No. Off
<b>REAR AXLE COMPONENTS—Continued</b>			
		<b>WASHERS</b> , adjusting fore and aft location of pinion, fitted between pinion head and pinion head bearing (These were used in production at the factory and not supplied as spare parts.)	
DA20	140643	Washer, adjusting, .0300 inch thickness	1
	140644	Washer, adjusting, .0315 inch thickness	1
	140645	Washer, adjusting, .0330 inch thickness	1
	140646	Washer, adjusting, .0345 inch thickness	1
	140647	Washer, adjusting, .0360 inch thickness	1
	140648	Washer, adjusting, .0375 inch thickness	1
	140649	Washer, adjusting, .0390 inch thickness	1
	140650	Washer, adjusting, .0405 inch thickness	1
	140651	Washer, adjusting, .0420 inch thickness	1
	140652	Washer, adjusting, .0435 inch thickness	1
	140653	Washer, adjusting, .0450 inch thickness	1
	140654	Washer, adjusting, .0465 inch thickness	1
	140655	Washer, adjusting, .0480 inch thickness	1
	140656	Washer, adjusting, .0495 inch thickness	1
	140657	Washer, adjusting, .0510 inch thickness	1
		<b>SHIMS</b> , adjusting fore and aft location of pinion, fitted between front of pinion head bearing race and rear axle center housing (These were not used in production at the factory, but they are supplied as spare parts.)	
	100965	Shim, .003 inch thickness	A/R
	100966	Shim, .005 inch thickness	A/R
	100967	Shim, .010 inch thickness	A/R
DA21	156903	Spacer, collapsible between pinion head bearing and pinion shank bearing	1
DA22	100422	Bearing, pinion shank	1
DA23	140337	Oil Seal Assembly, front of casing	1
DA24	160275	Flange, pinion	1
		<b>Please Note:</b> The front mounting bracket must be installed before the pinion flange is finally secured.	
		<b>HARDWARE</b> , securing pinion flange onto pinion shaft	
DA25	142333	Washer, plain	1
DA26	159394	Nut, nyloc, special	1
DA27	UKC725	Shield, pinion Nut	1

(Continued on next page.)

# PLATE DA

DIFFERENTIAL DETAILS—LATER UNIT

## TRIUMPH TR6



# DIFFERENTIAL DETAILS—LATER UNIT

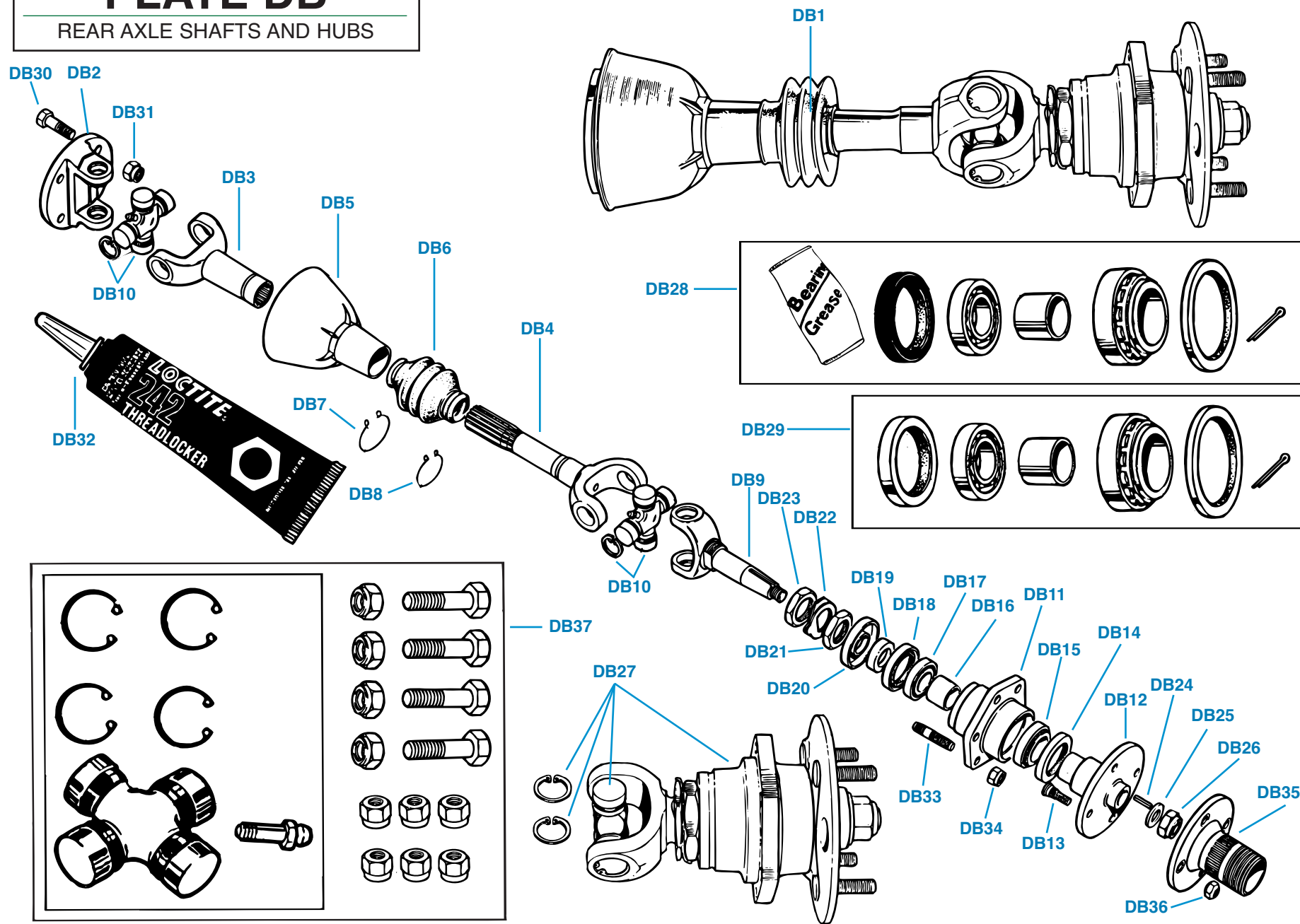
Plate No.	Part No.	Description	No. Off
<b>REAR AXLE COMPONENTS-Continued</b>			
<b>INNER AXLE SHAFT DETAILS</b>			
DA28	149378	<b>Inner Axle Shaft</b> , L.H.	1
DA29	149379	<b>Inner Axle Shaft</b> , R.H.	1
DA30	134465	<b>Bearing</b> , inner axle shaft	2
DA31	128638	<b>Housing</b> , oil seal, inner axle shaft	2
DA32	138523	<b>Seal</b> , oil, inner axle shaft	2
		<b>HARDWARE</b> , securing oil seal housing to axle housing	
DA33	HU806	<b>Screw</b> , set	8
DA34	WL208	<b>Washer</b> , lock	8
DA35	149409	<b>FLANGE ASSEMBLY</b> , driving, inner	2
	134450	<b>Stoneguard</b> , welded to flange	2
		<b>HARDWARE</b> , securing driving flanges to inner axle shafts	
DA36	143280	<b>Key</b>	2
DA37	139043	<b>Washer</b> , plain	2
DA38	138563	<b>Nut</b> , nyloc	2
		<b>INNER AXLE SHAFT DETAILS</b> , alternative fitment, may have been utilized after mid-1975 (Identical to arrangement listed above except for cotter pin holes in inner axle shafts and use of castellated nuts with cotter pins.)	
	UKC4862	<b>Inner Axle Shaft</b> , L.H.	1
	UKC4863	<b>Inner Axle Shaft</b> , R.H.	1
		<b>HARDWARE</b> , securing driving flanges to inner axle shafts	
	143280	<b>Key</b>	2
	139043	<b>Washer</b> , plain	2
	21A0079	<b>Nut</b> , castellated	2
	PC13	<b>Pin</b> , cotter	2
	149826	<b>REAR COVER AND MOUNTING BRACKET ASSEMBLY</b>	1
DA39	303393	<b>Rear Cover and Mounting Bracket Casting</b> , fitted up to comm. no. CF12500/CR5000 approx.	1
	311744	<b>Rear Cover and Mounting Bracket Casting</b> , fitted after comm. no. CF12500/CR5000 approx.	1
DA40	118826	<b>Plug</b> , core, fitted in breather hole	1
DA41	PC13	<b>Pin</b> , cotter	1
		<b>Please Note:</b> Although the rear cover casting design was changed at comm. no. CF12500/CR5000 approx., it does not appear that the part no. of the Rear Cover Assembly was changed, and it is certainly possible that the change was made in production only and never supplied as a spare part.	
DA42	134480	<b>Gasket</b> , between rear cover and axle housing (Also coat gasket on both sides with Wellseal gasket cement.)	1

Plate No.	Part No.	Description	No. Off
<b>REAR AXLE COMPONENTS-Continued</b>			
		<b>HARDWARE</b> , securing rear cover to axle housing	
DA43	140419	<b>Dowel</b> , locating cover	2
DA44	HU808	<b>Screw</b> , set	8
DA45	WL208	<b>Washer</b> , lock	8
DA46	211793	<b>FRONT AXLE MOUNTING PLATE ASSEMBLY</b>	1
DA47	140007	<b>Washer</b> , distance, welded to plate	1
		<b>HARDWARE</b> , securing front mounting plate to axle housing	
DA48	132856	<b>Bolt</b> , special (Don't substitute.)	4
DA49	WN710	<b>Washer</b> , shakeproof	4
		<b>MOUNTING DETAILS</b> , rear axle center assembly to chassis frame	
	147671	<b>Bolt</b> , mounting, axle center, front, welded to chassis frame	2
DA50	134235	<b>Mounting</b> , rubber, front, upper	2
DA51	134236	<b>Mounting</b> , rubber, front, lower	2
		<b>HARDWARE</b> , securing front mountings and differential to chassis frame	
DA52	134234	<b>Washer</b> , special, large	2
DA53	TN3209	<b>Nut</b> , nyloc	2
	147400	<b>Bolt</b> , mounting, axle center, rear, welded to chassis frame	2
DA54	147783	<b>Mounting Assembly</b> , axle center, rear	2
		<b>HARDWARE</b> , securing mounting assembly to rear cover and mounting bracket assembly	
DA55	HB811	<b>Bolt</b>	4
DA56	WM58	<b>Washer</b> , plain	4
DA57	TN3208	<b>Nut</b> , nyloc	4
		<b>HARDWARE</b> , securing rear mountings and differential to chassis frame	
DA58	134234	<b>Washer</b> , special	2
DA59	TN3209	<b>Nut</b> , nyloc	2

# PLATE DB

REAR AXLE SHAFTS AND HUBS

## TRIUMPH TR6



# REAR AXLE SHAFTS AND HUBS

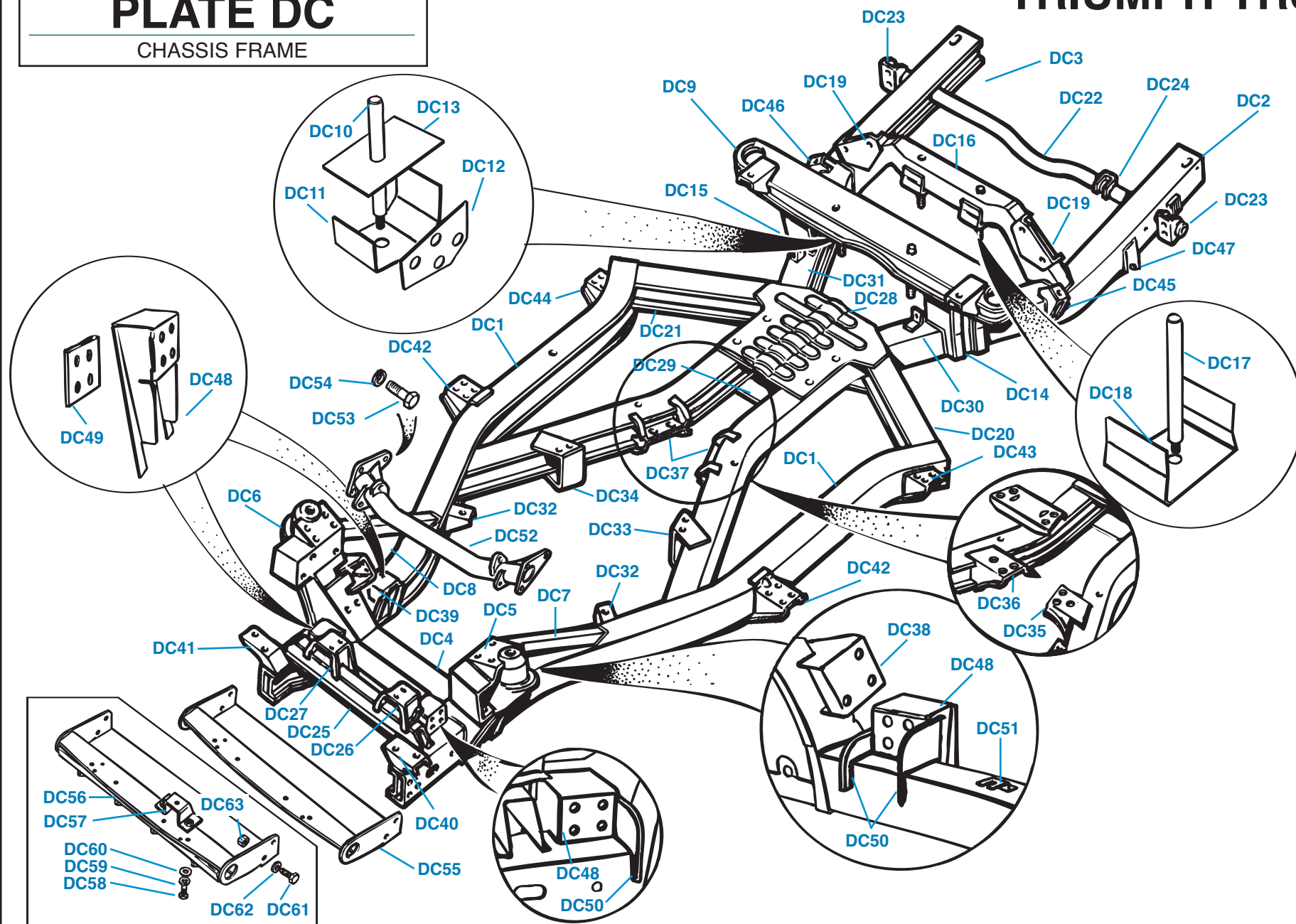
Plate No.	Part No.	Description	No. Off
DB1	402347	<b>REAR OUTER AXLE SHAFT AND HUB ASSEMBLY</b> , fitted up to comm. no. CF12500/CR5000	2
	212293	<b>REAR OUTER AXLE SHAFT ASSEMBLY</b> , complete fitted up to comm. no. CF12500/CR5000 (Does not include hub.)	2
	RKC454	<b>REAR OUTER AXLE SHAFT AND HUB ASSEMBLY</b> , fitted after comm. CF12500/CR5000	2
	TKC853	<b>REAR OUTER AXLE SHAFT ASSEMBLY</b> , complete fitted after comm. no. CF12500/CR5000 (Does not include hub.)	2
DB2	211137	<b>Inner Yoke and Flange</b>	2
	145085	<b>SLIDING JOINT ASSEMBLY (Matched set.)</b>	2
DB3	140749	<b>Inner Yoke and Shaft</b> , sliding component	2
DB4	142437	<b>Outer Yoke and Shaft</b> , sliding component	2
DB5	213844	<b>Boot</b> , P.V.C., protecting inner joint	2
DB6	140753	<b>Boot</b> , rubber, protecting sliding joint	2
DB7	140606	<b>Wire</b> , binding, large end of boot	2
DB8	140607	<b>Wire</b> , binding, small end of boot	2
DB9	137478	<b>Yoke and Stub Axle</b> , fitted up to comm. no. CF12500/CR5000	2
	UKC643	<b>Yoke and Stub Axle</b> , fitted after comm. no. CF12500/CR5000	2
DB10	144859	<b>UNIVERSAL JOINT ASSEMBLY</b> , fitted to both ends of both axle shafts, original equipment brand	4
	144825	<b>Nipple</b> , grease	4
	QL403	<b>Universal Joint Assembly</b> , aftermarket brand (Also comes with grease fitting.)	4
		<b>REAR HUB DETAILS</b>	
DB11	137496	<b>Rear Hub Housing</b>	2
DB12	210979	<b>DRIVING FLANGE ASSEMBLY</b> , disc wheels	2
DB13	132317	<b>Wheel Stud</b> , disc wheels	8
	212403	<b>DRIVING FLANGE ASSEMBLY</b> , wire wheels	2
	142799	<b>Wheel Stud</b> , wire wheels	8
DB14	138090	<b>Grease Seal</b> , rear hub, outer, fitted up to comm. no. CF12500/CR5000	2
	GHS133	<b>Grease Seal</b> , rear hub, outer, fitted after comm. no. CF12500/CR5000	2
DB15	134589	<b>Bearing Assembly</b> , rear hub, outer fitted up to comm. no. CF12500/CR5000	2
	GHB112	<b>Bearing Assembly</b> , rear hub, outer, fitted after comm. no. CF12500/CR5000	2
DB16	138272	<b>Spacer</b> , collapsible, between inner and outer hub bearings	2
DB17	132066	<b>Bearing Assembly</b> , rear hub, inner, fitted up to comm. no. CF12500/CR5000	2
	GHB101	<b>Bearing Assembly</b> , rear hub, inner, fitted after comm. no. CF12500/CR5000	2
DB18	138089	<b>Grease Seal</b> , rear hub, inner, fitted up to comm. no. CF12500/CR5000	2
	GHS131	<b>Grease Seal</b> , rear hub, inner, fitted after comm. no. CF12500/CR5000	2
DB19	134584	<b>Spacer</b>	2
DB20	137497	<b>Stoneguard</b>	2

Plate No.	Part No.	Description	No. Off
DB21	138861	<b>Nut</b> , bearing adjusting	2
DB22	139057	<b>Locking Plate</b> , securing adjusting nuts	2
DB23	134585	<b>Nut</b> , locking	2
		<b>REAR OUTER AXLE SHAFT ASSEMBLY-Continued</b>	
		<b>REAR HUB DETAILS-Continued</b>	
		<b>HARDWARE</b> , securing driving flanges to stub axles	
		<b>Key</b>	2
DB24	134591	<b>Washer</b> , plain	2
DB25	WM63	<b>Nut</b> , nyloc, fitted up to comm. no. CF12500/CR5000 (Always replace these.)	2
DB26	138563	<b>Nut</b> , slotted, fitted after comm. no. CF12500/CR5000	2
	21A0079	<b>Pin</b> , cotter (Use with slotted nut.)	2
	PC13	<b>REBUILT REAR HUB ASSEMBLY</b> , disc wheels (Includes stub axle, universal joint, all hub details, and wheel studs, completely assembled and ready to install.)	2
DB27	RHK6/DW	<b>REBUILT REAR HUB ASSEMBLY</b> , wire wheels, (Includes stub axle, universal joint, all hub details, and wheel studs, completely assembled and ready to install.)	2
	RHK6/WW	<b>Rear Hub Rebuilding Kit</b> , Unipart brand, includes OEM brand components	2
DB28	GHK1015	<b>Rear Hub Rebuilding Kit</b> , aftermarket brand	2
DB29	QWB135	<b>HARDWARE</b> , securing outer axle shaft to driving flange on axle center assembly	2
DB30	107960	<b>Bolt</b>	8
DB31	TN3209	<b>Nut</b> , nyloc	8
	GHF243	<b>Nut</b> , Cleveland, alternative to TN3209 for even more positive locking	8
DB32	TRFC103	<b>Loctite 242 Threadlocker</b> , .20 fl. oz. tube	
		<b>HARDWARE</b> , securing rear hub housings to trailing arms	
DB33	TD812	<b>Stud</b> , screwed into threaded holes in trailing arms	12
DB34	YN2908	<b>Nut</b> , nyloc, securing hub housings to studs	12
		<b>WIRE WHEEL HUB EXTENSIONS</b>	
DB35	202446	<b>Extension</b> , hub, R.H.	2
	202447	<b>Extension</b> , hub, L.H.	2
DB36	110366	<b>Nut</b> , double bevel	16
DB37	RFK327	<b>REAR AXLE SHAFT U-JOINT AND HARDWARE KIT</b>	2
	QL403	<b>Universal Joint Assembly</b>	2
	107960	<b>Bolt</b> , flange	4
	TN3209	<b>Nut</b> , nyloc, flange	4
	YN2908	<b>Nut</b> , nyloc, hub flange	6
	RFK328	<b>UNIVERSAL JOINT REPLACEMENT KIT</b> , complete car	1
	QL403	<b>Universal Joint Assembly</b>	6
	107960	<b>Bolt</b> , flanges	16
	TN3209	<b>Nut</b> , nyloc, flanges	16
	YN2908	<b>Nut</b> , nyloc, hub flanges	12
	TRFC103	<b>Loctite 242 Threadlocker</b> , .20 fl. oz tube	1

# PLATE DC

CHASSIS FRAME

## TRIUMPH TR6



# CHASSIS FRAME

Plate No.	Part No.	Description	No. Off
	402547	<b>CHASSIS FRAME ASSEMBLY</b> , fitted up to comm. no. CF/CR1	1
	PKC21	<b>CHASSIS FRAME ASSEMBLY</b> , fitted from comm. no. CF/CR1 up to CF12500/CR5000	1
	PKC54	<b>CHASSIS FRAME ASSEMBLY</b> , fitted from comm. no. CF12500/CR5000 up to CF21501 (carb models) and CR6020 approx.(P.I. models); includes serrated plate welded to rear side member for rear bumper support	1
	PKC21	<b>CHASSIS FRAME ASSEMBLY</b> , fitted after comm. no. CF21501 (carb models) and CR6020 approx. (P.I. models)	1
DC1	210531	<b>Front Sidemember Sub-Assembly (Fits L.H. or R.H.)</b>	2
DC2	211589	<b>REAR SIDEMEMBER SUB-ASSEMBLY</b> , L.H., fitted up to comm. no. CF12500/CR5000	1
	149944	<b>Bracket</b> , mounting T-fitting for P.I. fuel system, fitted up to comm. no. CF/CR1; not required for the TR6 fuel system	1
	TKC679	<b>REAR SIDEMEMBER SUB-ASSEMBLY</b> , L.H., fitted from comm. no. CF12500/CR5000 up to CF21501 and CR6020 approx.	1
	634729	<b>Plate</b> , serrated, rear bumper support, welded to rear sidemember	1
	211589	<b>Rear Sidemember Sub-Assembly</b> , L.H., fitted after comm. no. CF21501 and CR6020 approx.	1
DC3	211590	<b>Rear Sidemember Sub-Assembly</b> , R.H., fitted up to comm. no. CF12500/CR5000	1
	TKC678	<b>REAR SIDEMEMBER SUB-ASSEMBLY</b> , R.H., fitted from comm. no. CF12500/CR5000 up to CF21501 and CR6020 approx.	1
	634729	<b>Plate</b> , serrated, rear bumper support, welded to rear sidemember	1
	211590	<b>Rear Sidemember Sub-Assembly</b> , R.H., fitted after comm. no. CF21501 and CR6020 approx.	1
DC4	139354	<b>Front Crossmember Assembly</b>	1
DC5	307796	<b>Turret Assembly</b> , front suspension, L.H.	1
DC6	307797	<b>Turret Assembly</b> , front suspension, R.H.	1
DC7	211401	<b>Side Brace Sub-Assembly</b> , L.H.	1
DC8	211402	<b>Side Brace Sub-Assembly</b> , R.H.	1
		<b>REAR SUSPENSION CROSSMEMBER (FRONT)</b>	
DC9	214107	<b>REAR SUSPENSION CROSSMEMBER (FRONT) SUB-ASSEMBLY</b>	1
	147670	<b>MOUNTING BRACKET SUB-ASSEMBLY</b> , rear axle, front	2
DC10	147671	<b>Bolt</b>	2
DC11	140009	<b>Bracket</b>	2

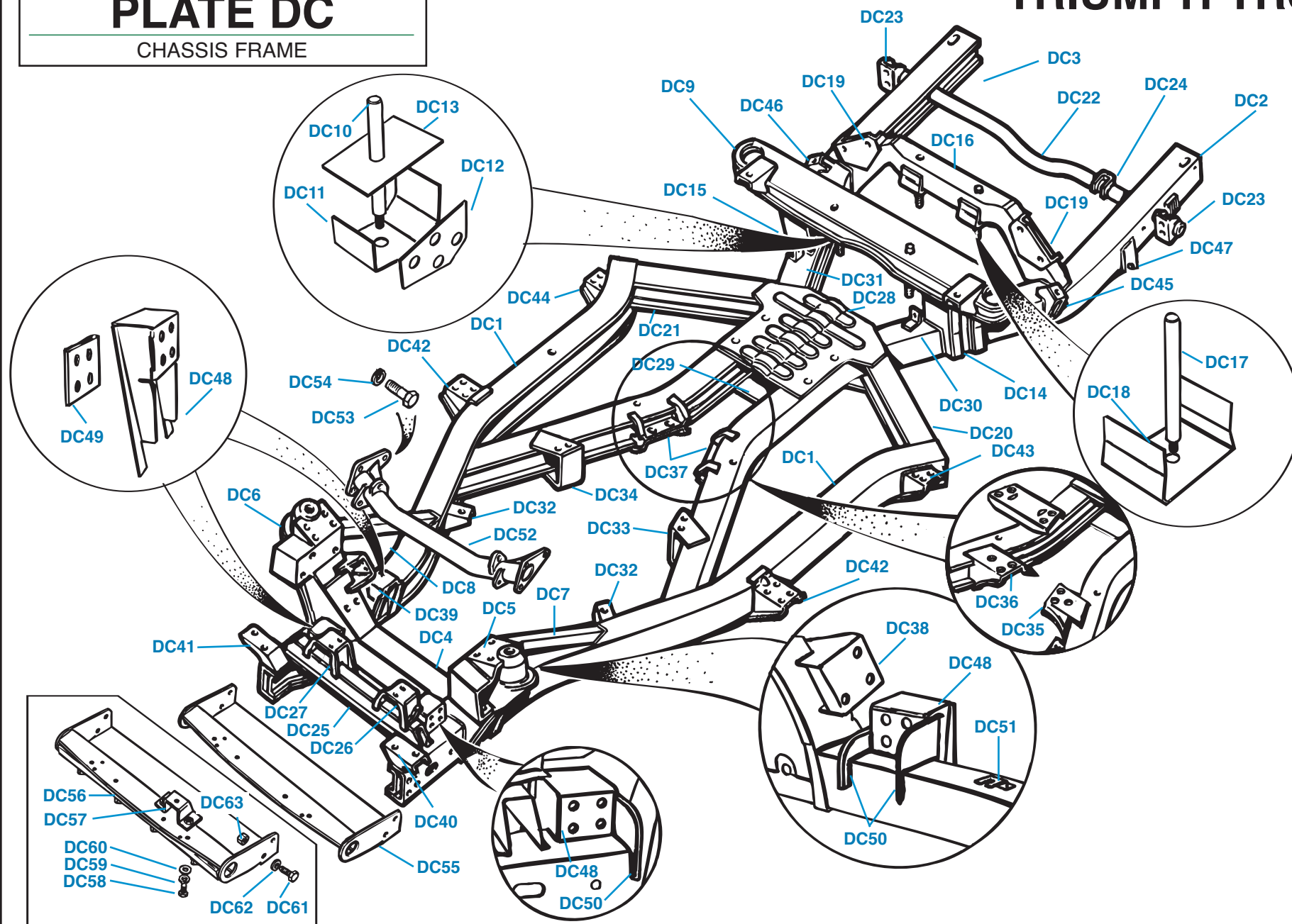
Plate No.	Part No.	Description	No. Off
		<b>CHASSIS FRAME ASSEMBLY-Continued</b>	
		<b>REAR SUSPENSION CROSSMEMBER (FRONT)-Continued</b>	
		<b>REINFORCEMENT DETAILS</b> , rear axle mounting (Aftermarket components as used on competition cars.)	
DC12	TRFCD135	<b>Reinforcement</b> , for boxing in mounting bracket	4
DC13	TRFCD136	<b>Reinforcement</b> , for crossmember around axle mounting bolts	2
DC14	307106	<b>Support Bracket</b> , L.H.	1
DC15	307107	<b>Support Bracket</b> , R.H.	1
DC16	214031	<b>REAR AXLE (REAR) CROSSMEMBER SUB-ASSEMBLY</b>	1
	147401	<b>MOUNTING BRACKET SUB-ASSEMBLY</b> , rear axle, rear	2
DC17	147400	<b>Bolt</b>	2
DC18	140051	<b>Bracket</b>	2
DC19	147947	<b>Mounting Bracket</b> , rear shock absorber	2
DC20	211346	<b>Crossmember Assembly</b> , L.H., trailing arm mounting	1
DC21	211347	<b>Crossmember Assembly</b> , R.H., trailing arm mounting	1
DC22	212133	<b>Rear Cross Tube</b>	1
DC23	148002	<b>Mounting Bracket</b> , rear quarter bumper	2
DC24	142449	<b>Mounting Bracket</b> , exhaust, L.H.	1
DC25	214167	<b>CROSSMEMBER ASSEMBLY</b> , rack and pinion mounting	1
DC26	214259	<b>Mounting Bracket Assembly</b> , L.H., rack and pinion	1
DC27	147702	<b>Mounting Bracket Assembly</b> , R.H., rack and pinion	1
DC28	214253	<b>Cruciform Plate</b> , top	1
DC29	211650	<b>Cruciform Plate</b> , bottom	1
DC30	142935	<b>Hose Bracket</b>	1
DC31	147987	<b>Mounting Bracket</b> , hydraulic fitting	1
DC32	140089	<b>Body Mounting Bracket Assembly</b> , front sidemember	2
DC33	139447	<b>Scuttle Mounting Bracket Assembly</b> , L.H.	1
DC34	139448	<b>Scuttle Mounting Bracket Assembly</b> , R.H.	1
		<b>REAR ENGINE MOUNTING DETAILS</b> , fitted up to comm. no. CF/CR1	
DC35	139223	<b>Bracket</b> , L.H.	1
DC36	139224	<b>Bracket</b> , R.H.	1
		<b>CROSSMEMBER</b> , rear engine mounting (See Section AG.)	

(Continued on next page.)

# PLATE DC

CHASSIS FRAME

## TRIUMPH TR6



# CHASSIS FRAME

Plate No.	Part No.	Description	No. Off
<b>CHASSIS FRAME ASSEMBLY-Continued</b>			
<b>REAR ENGINE MOUNTING DETAILS</b> , fitted after comm.			
		no. CF/CR1	
DC37	160114	<b>Bracket</b> , L.H. or R.H.	2
		<b>CROSSMEMBER</b> , rear engine mounting (See Section AG.)	
DC38	148058	<b>Bracket</b> , front engine mounting, L.H.	1
DC39	148059	<b>Bracket</b> , front engine mounting, R.H.	1
DC40	144633	<b>Bracket</b> , body and radiator mounting, L.H.	1
DC41	144634	<b>Bracket</b> , body and radiator mounting, R.H.	1
DC42	211354	<b>Bracket</b> , body mounting, sill, front	2
DC43	147897	<b>Bracket</b> , body mounting, sill, rear, L.H.	1
DC44	147898	<b>Bracket</b> , body mounting, sill, rear, R.H.	1
DC45	140194	<b>Bracket</b> , rebound, rear suspension, L.H.	1
DC46	140195	<b>Bracket</b> , rebound, rear suspension, R.H.	1
<b>REAR ANCHORAGE BRACKET DETAILS</b> , fitted after			
		comm. no. CF/CR1	
DC47	UKC2096	<b>Bracket</b> , anchorage, L.H.	1
	UKC2097	<b>Bracket</b> , anchorage, R.H.	1
<b>MOUNTING DETAILS</b> , lower front suspension			
DC48	139580	<b>Support Bracket</b> , lower inner fulcrum, welded to front sidemembers	4
DC49	TRFCD137	<b>Plate Washer</b> , reinforcing support bracket, per Kastner's instructions in the competition preparation manual; aftermarket product not included with chassis frame	4
DC50	RFK158	<b>Gusset Kit</b> , strengthening support brackets, comprising six gussets	1
DC51	114210	<b>Bracket</b> , hydraulic fitting	1
<b>FRONT CROSS TUBE DETAILS</b>			
DC52	213327	<b>Cross Tube Assembly</b> , fitted up to comm. no. CF/CR1	1
	219115	<b>Cross Tube Assembly</b> , fitted after comm. no. CR1, all models except U.S.A.	1
	219115	<b>Cross Tube Assembly</b> , U.S.A. models, fitted from comm. no. CF1 up to CF35000 (May have been deleted at CF27000.)	1
	TKC2147	<b>Cross Tube Assembly</b> , U.S.A. models, fitted after comm. no. CF35000 (May have been added at CF27000.)	1
<b>HARDWARE</b> , securing cross tube assembly to chassis frame			
DC53	HU907	<b>Screw</b> , set	6
DC54	WL209	<b>Washer</b> , lock	6

Plate No.	Part No.	Description	No. Off
<b>RADIATOR PROTECTION SHIELD</b>			
DC55	213021	<b>Radiator Protection Shield</b> , all models except U.S.A.	1
	213021	<b>Radiator Protection Shield</b> , U.S.A. models up to comm. no. CF35000 (May have been deleted at CF27000.)	1
<b>RADIATOR PROTECTION SHIELD DETAILS</b> , U.S.A. models after comm. no. CF35000 (May have been added at CF27000)			
DC56	TKC1972	<b>Radiator Protection Shield</b> , reinforced	1
DC57	ZKC1473	<b>Bracket</b> , bumper support strut	2
<b>HARDWARE</b> , securing brackets to shield			
DC58	HU806	<b>Screw</b> , set	4
DC59	WL208	<b>Washer</b> , lock	4
DC60	WP8	<b>Washer</b> , plain	4
<b>HARDWARE</b> , securing radiator protection shield to chassis frame, all models			
DC61	HU907	<b>Screw</b> , set	4
DC62	WL209	<b>Washer</b> , lock	4
DC63	HN2009	<b>Nut</b>	4