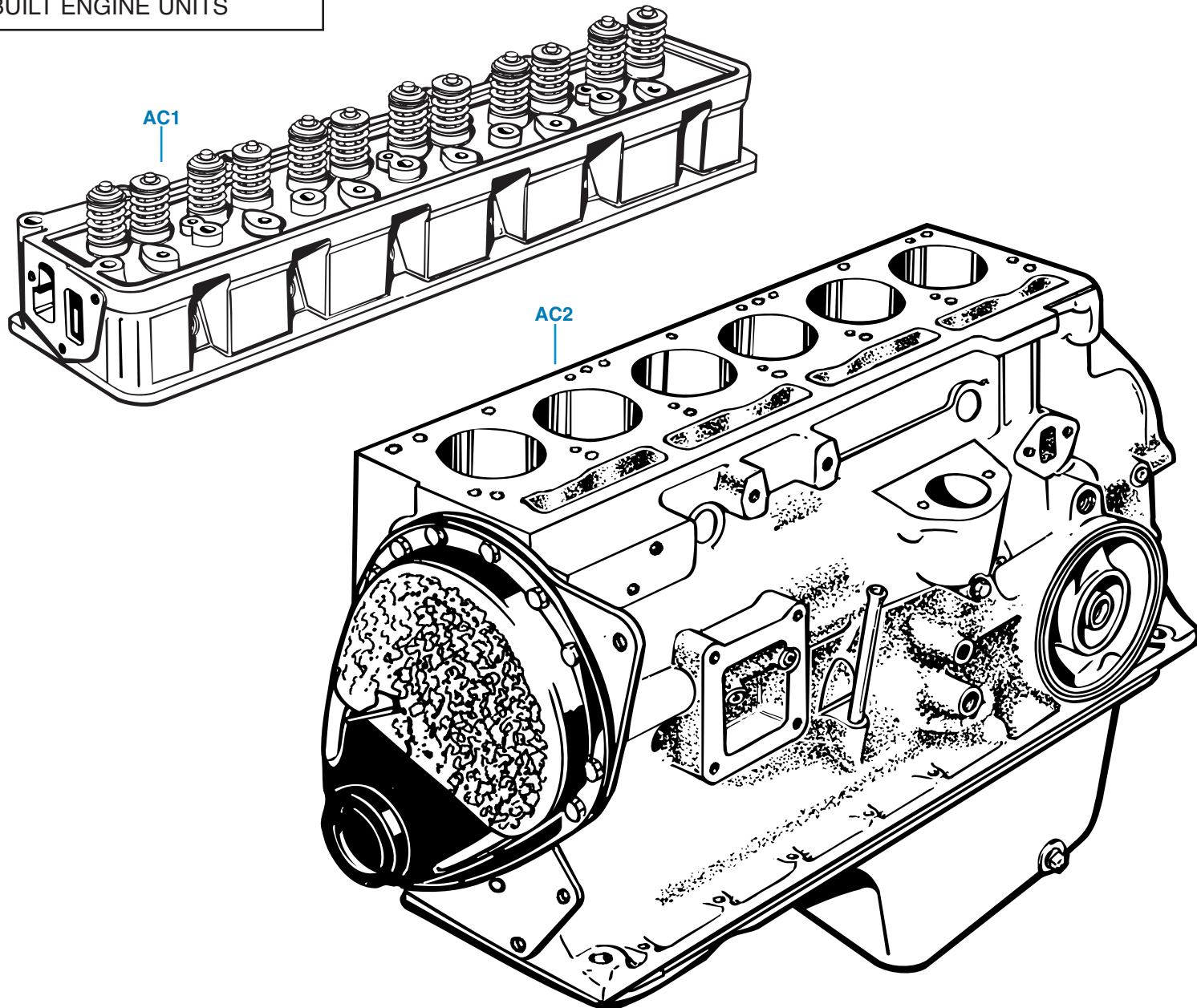


PLATE AC

REBUILT ENGINE UNITS

TRIUMPH TR6



REBUILT ENGINE UNITS

| Plate No. | Part No. | Description | No. Off |
|-----------|----------|-------------|---------|
|-----------|----------|-------------|---------|

The Roadster Factory offers rebuilt short-block engines and cylinder heads on an exchange basis. If your old unit does not accompany your order, then you must pay the core charge, which is listed along with the price of the rebuilt unit in our current price list. The core charge will be refunded upon receipt of a rebuildable core unit.

To be considered a rebuildable unit, your old unit must be reasonably clean, complete, and drained of oil. Engines with broken blocks or cranks, engines with spun bearings, and engines which have "dropped" their thrust washers are not considered rebuildable, and they are not worth the price of shipping back to us as core units. Likewise, cracked cylinder heads have no core value.

We shall be happy to rebuild your old engine or cylinder head in our shop if you wish to keep your original serial number and your original components. This will be done at the price of standard rebuilt units, provided that your old unit qualifies as a rebuildable core unit. If you send your old unit for rebuilding, make sure that it is so marked. Your old unit will be evaluated upon receipt, and you will be contacted for further instructions based upon the results of the evaluation.

TRF's engine rebuilding process includes disassembly and sandblasting of exterior surfaces to remove old paint and rust. Blocks are then rebored; crankshafts and camshafts are magnafluxed, checked for straightness, and reground; and connecting rods are rebuilt with new small-end bushes. All components are thoroughly cleaned before reassembly, and all dimensions are rigidly checked. New bearings, thrust washers, oil seals, and gaskets are fitted to every engine, along with new pistons and rings.

The same high-quality craftsmanship that goes into a TRF short engine unit is applied to the production of our factory rebuilt cylinder heads. All heads include hardened valve seats for use with unleaded fuel, new valves, guides, and new valve springs. Bronze guides are always fitted. A precision valve job and final hand finishing of valve seats is included to insure long-term quality and performance.

Short engines and cylinder heads rebuilt by The Roadster Factory are guaranteed for twelve-thousand miles or twelve months, whichever comes first. Guarantees are void if the vehicle is used in competition, if the unit is run without first being filled with the specified oil, if the unit is incorrectly installed, or if the unit is completely or partially disassembled by anyone other than The Roadster Factory. In case of failure during the warranty period, please telephone for instructions on how to handle your claim. Failures are extremely rare, and we shall give them priority attention. Guarantee does not include removal or replacement, failure of related components, or any amount higher than the original purchase price.

| Plate No. | Part No. | Description | No. Off |
|-----------|----------|-------------|---------|
|-----------|----------|-------------|---------|

FACTORY REBUILT SHORT ENGINE UNITS, carburetor models

| | | | |
|-----|-------|--|---|
| AC1 | RBE61 | Short Engine Unit , fitted up to comm. no. CC50000 | 1 |
| | RBE62 | Short Engine Unit , fitted from comm. no. CC50000 up to CF12500 | 1 |

| | | | |
|--|-------|---|---|
| | RBE63 | Short Engine Unit , fitted after comm. no. CF12500 | 1 |
|--|-------|---|---|

FACTORY REBUILT SHORT ENGINE UNITS, P.I. models

| | | | |
|--|-------|---|---|
| | RBE64 | Short Engine Unit , fitted up to comm. no. CP50000 | 1 |
|--|-------|---|---|

| | | | |
|--|-------|---|---|
| | RBE65 | Short Engine Unit , fitted from comm. no. CP50000 up to CR5000 | 1 |
|--|-------|---|---|

| | | | |
|--|-------|--|---|
| | RBE63 | Short Engine Unit , fitted after comm. no. CR5000 | 1 |
|--|-------|--|---|

FACTORY REBUILT CYLINDER HEADS, carburetor models

| | | | |
|-----|----------|--|---|
| AC2 | RBCH61/N | Cylinder Head Assembly , 8.6 to 1 compression ratio, fitted up to comm. no. CC75000 | 1 |
|-----|----------|--|---|

| | | | |
|--|----------|--|---|
| | RBCH62/N | Cylinder Head Assembly , 7.75 to 1 compression ratio, fitted from comm. no. CC75000 up to CF12500 | 1 |
|--|----------|--|---|

| | | | |
|--|----------|--|---|
| | RBCH63/N | Cylinder Head Assembly , 7.5 to 1 compression ratio, fitted after comm. no. CF12500 | 1 |
|--|----------|--|---|

FACTORY REBUILT CYLINDER HEADS, P.I. models

| | | | |
|--|----------|--|---|
| | RBCH64/N | Cylinder Head Assembly , 9.5 to 1 compression ratio, fitted up to comm. no. CP75000 | 1 |
|--|----------|--|---|

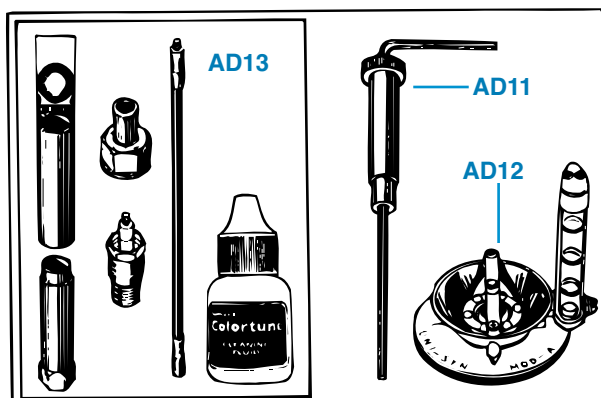
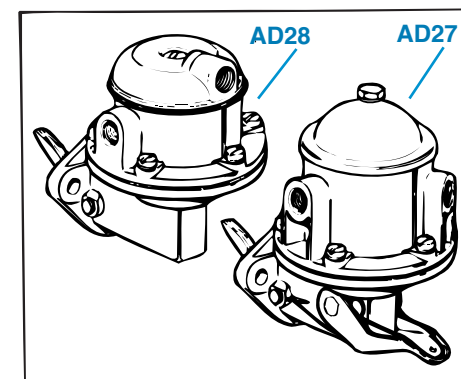
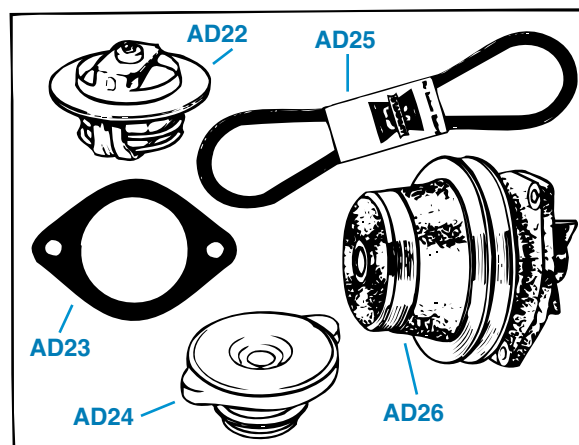
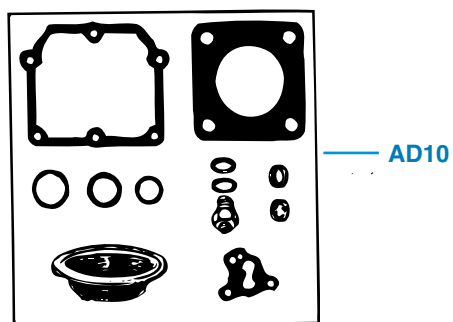
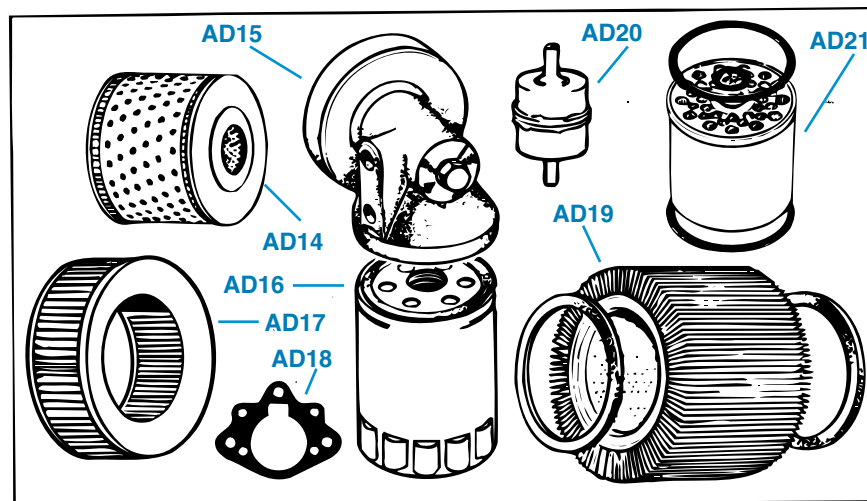
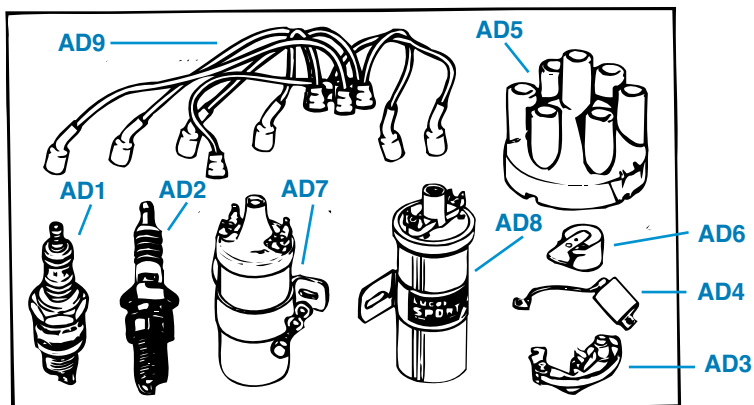
| | | | |
|--|----------|--|---|
| | RBCH65/N | Cylinder Head Assembly , 9.5 to 1 compression ratio, fitted from comm. no. CP75000 up to CR5000 | 1 |
|--|----------|--|---|

| | | | |
|--|----------|---|---|
| | RBCH66/N | Cylinder Head Assembly , 9.5 to 1 compression ratio, fitted after comm. no. CR5000 | 1 |
|--|----------|---|---|

PLATE AD

ENGINE TUNE-UP COMPONENTS

TRIUMPH TR6



ENGINE TUNE UP COMPONENTS

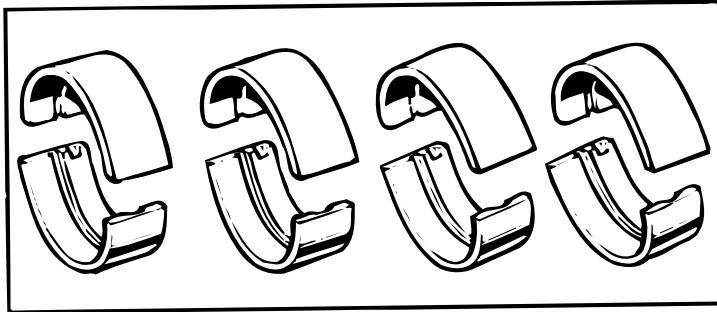
| Plate No. | Part No. | Description | No. Off |
|--|-----------|---|---------|
| ENGINE TUNE-UP COMPONENTS | | | |
| ELECTRICAL TUNE-UP COMPONENTS | | | |
| AD1 | CHN9Y | Spark Plug , Champion N9Y | 6 |
| | CHN12Y | Spark Plug , Champion N12Y, for use whenever a hotter plug is required | 6 |
| AD2 | NGKBP6ES | Spark Plug , NGK brand, for stock engines | 6 |
| AD3 | LUDSB101 | Contact Set (Points Set) , Lucas brand | 1 |
| AD4 | LUDCB101 | Condenser , Lucas brand | 1 |
| AD5 | LUddb117 | Distributor Cap , Lucas brand | 1 |
| AD6 | LUDRB106 | Rotor Arm , Lucas brand | 1 |
| AD7 | LUDLB101 | Ignition Coil , stock type, up to comm. no. CF1, Lucas brand | 1 |
| | LUDLB102 | Ignition Coil , stock type, after comm. no. CF1, Lucas brand | 1 |
| AD8 | LUDLB105B | Ignition Coil , Lucas high performance“sports” coil; fits all TR6 | 1 |
| AD9 | GHT144 | Ignition Wire Set , OEM green wires, early TR6 | 1 |
| | GHT156 | Ignition Wire Set , OEM green wires, later TR6 with right angle connections on ends of wires plugging into distributor cap | 1 |
| CARBURETTOR REPAIR KITS AND TUNING AIDS | | | |
| AD10 | ZEMS577A | Kit , carburettor repair, major | 2 |
| AD11 | CAT1 | Tool , carburettor jet adjusting | 1 |
| AD12 | CAT2 | Meter , air flow, Unisyn, for synchronizing multiple carbs (also P.I. throttles) | 1 |
| AD13 | GUCT500 | Colortune Kit , allows mixture setting by watching colour of combustion inside engine | 1 |
| FILTERS | | | |
| AD14 | GFE131 | Oil Filter , both carb and P.I. models | 1 |
| | | SPIN-ON OIL FILTER CONVERSION , both carb and P.I. models | |
| | | Spin-On Oil Filter Adaptor | 1 |
| AD15 | TRFEL403 | Spin-On Oil Filter | 1 |
| AD16 | TRFEL601 | Air Filter , carb models only | 2 |
| AD17 | GFE1020 | Gasket , between air filter canister and carburettors, carb models only | 2 |
| AD18 | BHH1992 | Air Filter , P.I. models only | 1 |
| AD19 | GFE1048 | Fuel Filter , carb models only | 1 |
| AD20 | GFF56 | Fuel Filter , P.I. models only | 1 |
| AD21 | GFE5296 | Fuel Filter , P.I. models only | 1 |
| COOLING SYSTEM | | | |
| AD22 | GTS106 | Thermostat , winter, opening at 190 degrees Fahrenheit (88 degrees Centigrade) | 1 |
| | GTS104 | Thermostat , summer, opening at 180 degrees Fahrenheit (82 degrees Centigrade) | 1 |
| AD23 | GTG103 | Gasket , thermostat cover | 1 |
| AD24 | GRC112 | Radiator Cap , 7 lb. pressure, fitted up to commission no. CF12500/CR5000 | 1 |

| Plate No. | Part No. | Description | No. Off |
|---|-------------|--|---------|
| COOLING SYSTEM—Continued | | | |
| | GRC114 | Radiator Cap , 13 lb. pressure, fitted after commission no. CF12500/CR5000 | 1 |
| AD25 | GFB11088 | Fan Belt , 3/8 inch width, all models except U.S.A. | 1 |
| | GFB11088 | Fan Belt , 3/8 inch width, early U.S.A. carb models | 1 |
| | 217391 | Fan Belt , 1/2 inch width, later U.S.A. models | 1 |
| | TKKC2165 | Fan Belt , 1/2 inch width, later U.S.A. models after engine number CF35000 (Cars with air pumps.) | 1 |
| | TKC2166 | Fan Belt , air pump drive, later U.S.A. models after engine no. CF35000 | 1 |
| AD26 | QHQP749 | Water Pump and Pulley Assembly , with 3/8 inch pulley groove, all P.I. models | 1 |
| | QHQP749 | Water Pump and Pulley Assembly , with 3/8 inch pulley groove, early carb models | 1 |
| | GWP203 | Water Pump and Pulley Assembly , with 1/2 inch pulley groove, later U.S.A. models up to eng. no. CF35000 | 1 |
| | TKC2106 | Water Pump and Pulley Assembly , with 1/2 inch pulley groove, latest carb models after eng. no. CF35,000 (Cars with air pumps.) | 1 |
| Please Note: When replacing fan belts or water pumps, insure that crankshaft pulley, water pump pulley, and alternator pulley all have the same width, and then choose the corresponding replacements. | | | |
| FUEL PUMPS | | | |
| AD27 | 213577 | FUEL PUMP , original equipment, AC brand | 1 |
| | 8G2039 | Repair Kit , original fuel pump only | 1 |
| AD28 | REPRO213577 | Fuel Pump , aftermarket replacement | 1 |

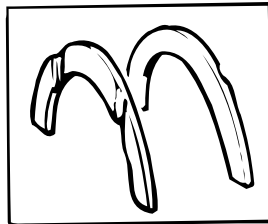
PLATE AE

BEARINGS, PISTONS, RINGS

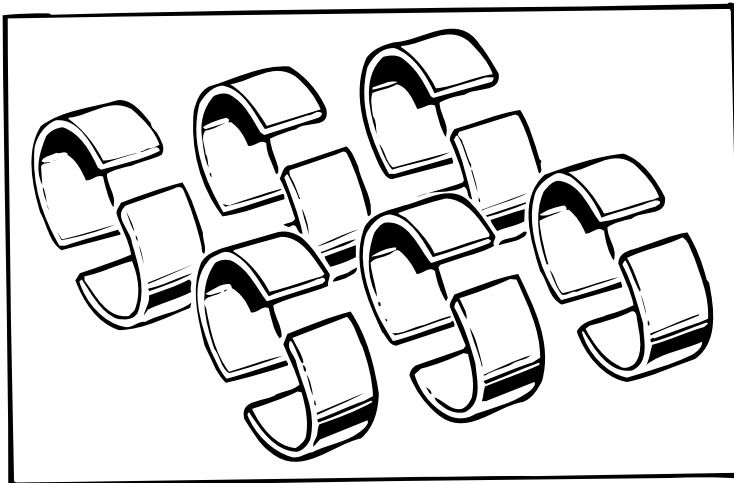
TRIUMPH TR6



AE1

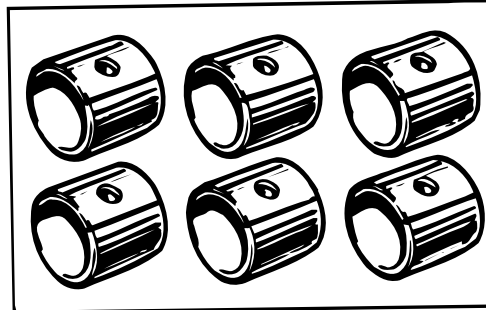


AE2

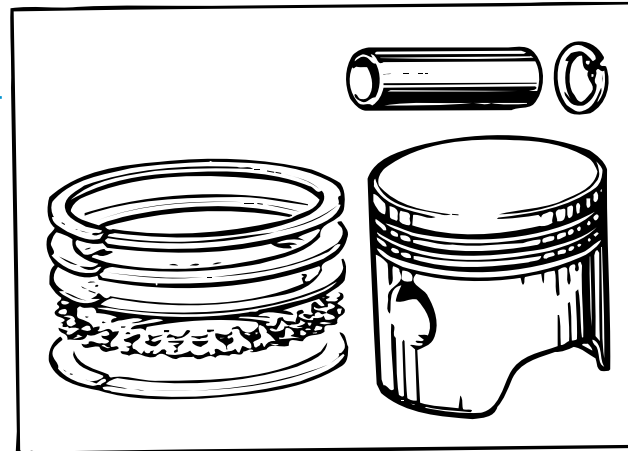


AE3

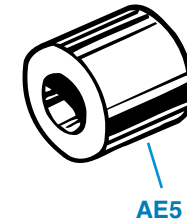
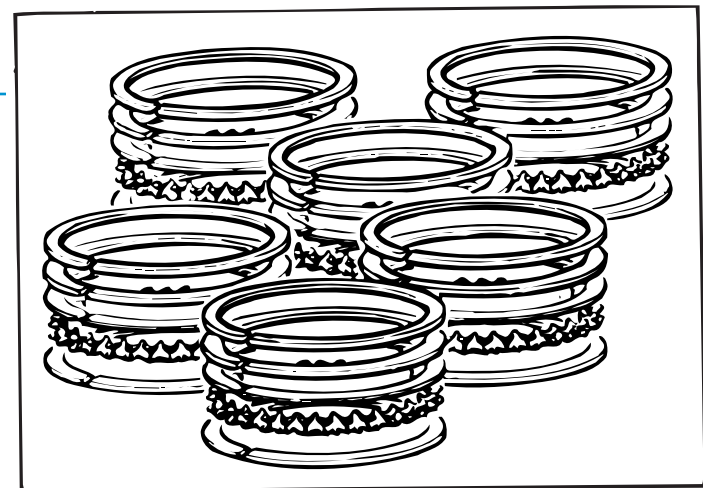
AE4



AE7

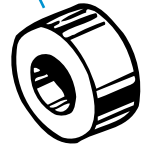


AE8



AE5

AE6



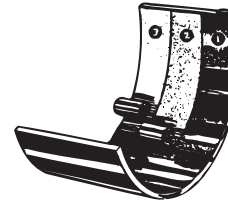
BEARINGS, PISTONS, RINGS

| Plate No. | Part No. | Description | No. Off |
|---|--------------|---|---------|
| ENGINE BEARINGS | | | |
| MAIN BEARING SETS , Vandervell brand | | | |
| AE1 | VPM91253/STD | Main Bearing Set , standard size | 1 |
| | VPM91253/010 | Main Bearing Set , .010 inch undersize | 1 |
| | VPM91253/020 | Main Bearing Set , .020 inch undersize | 1 |
| | VPM91253/030 | Main Bearing Set , .030 inch undersize | 1 |
| | VPM91253/040 | Main Bearing Set , .040 inch undersize | 1 |
| CRANKSHAFT THRUST WASHER SETS | | | |
| AE2 | VPW12/STD | Thrust Washer Set , standard size | 1 |
| | VPW12/005 | Thrust Washer Set , .005 inch oversize | 1 |
| | VPW12/015 | Thrust Washer Set , .015 inch oversize | 1 |
| | VPW12/030 | Thrust Washer Set , .030 inch oversize | 1 |
| CONNECTING ROD BEARING SETS , Vandervell Brand | | | |
| AE3 | VPR91252/STD | Rod Bearing Set , standard size | 1 |
| | VPR91252/010 | Rod Bearing Set , .010 inch undersize | 1 |
| | VPR91252/020 | Rod Bearing Set , .020 inch undersize | 1 |
| | VPR91252/030 | Rod Bearing Set , .030 inch undersize | 1 |
| | VPR91252/040 | Rod Bearing Set , .040 inch undersize | 1 |
| SMALL END BUSHES , Vandervell brand | | | |
| AE4 | RFK402 | SMALL END BUSH SET (Install and ream to size.) | 1 |
| | 119813 | Bush , small end | 6 |
| PILOT BUSHES , gearbox input shaft | | | |
| AE5 | 47246 | Bush , pilot, fitted in rear of crankshaft, fitted up to engine no. CC/CP50000 | 1 |
| AE6 | 151213 | Bush , pilot, fitted in center of flywheel, fitted after engine no. CC/CP50000 | 1 |
| PISTONS , OEM brand, with rings and piston pins | | | |
| AE7 | 148118/STD | Piston Assembly , standard size | 6 |
| | 148118/020 | Piston Assembly , .020 inch oversize | 6 |
| | 148118/030 | Piston Assembly , .030 inch oversize | 6 |
| PLEASE NOTE: Fit only matched pistons by brand, type, and size to your engine. | | | |
| PISTON RING SETS , Grant brand rings, as recommended by Kastner in factory competition manuals | | | |
| AE8 | GR1287/STD | Piston Ring Set , standard size | 1 |
| | GR1287/020 | Piston Ring Set , .020 inch oversize | 1 |
| | GR1287/030 | Piston Ring Set , .030 inch oversize | 1 |
| | GR1287/040 | Piston Ring Set , .040 inch oversize | 1 |
| PLEASE NOTE: Fit oversize piston rings with pistons of corresponding oversize. Replace entire set of rings at same time. | | | |

Because Charles Runyan always found Vandervell engine bearings in the TR engines that he tore down over the years, we at TRF have always handled only Vandervell engine bearings for sale, unless a Vandervell bearing is unavailable for the application. Apparently, there is also a story about a crankshaft breaking in one of Charles's engines when no Vandervell bearing was available. Yet another story surfaced recently from Frank Stoddard who now works in TRF's Purchasing Department but used to do the same job in the 1960's for Standard Triumph in San Francisco, California. It seems that no engine bearings had arrived at the San Francisco warehouse for some time from England, and some non-Vandervell bearings were purchased from a local source. One day, Kas Kastner, Competition Manager down in Los Angeles, called Frank on the 'phone. He was fighting mad and wanted to know why they were selling junk bearings. He refused to fit anything but Vandervell bearings to his race engines.

The question of whether or not to sell only Vandervell bearings came up again at a policy meeting at The Roadster Factory. The price of genuine Vandervell bearings has gone steadily upward over the past few years, and we find it hard to compete against bearing prices available from other sources, although we do sell lots of Vandervell bearings. We made a thorough study of the matter, and we concluded again that Vandervell bearings are the only ones that we want to sell.

Vandervell Lead-Indium Overplated
Cast Copper Lead Construction



1. Lead-Indium Overplate
2. Cast Copper Lead Intermediate Layer
3. Steel Back

Typical Overplated Copper Lead
Bearing Construction (Cast or Sintered)



1. Lead-Tin-Copper Overplate
2. Nickel Dam
3. Copper Lead Intermediate Layer
4. Steel Back

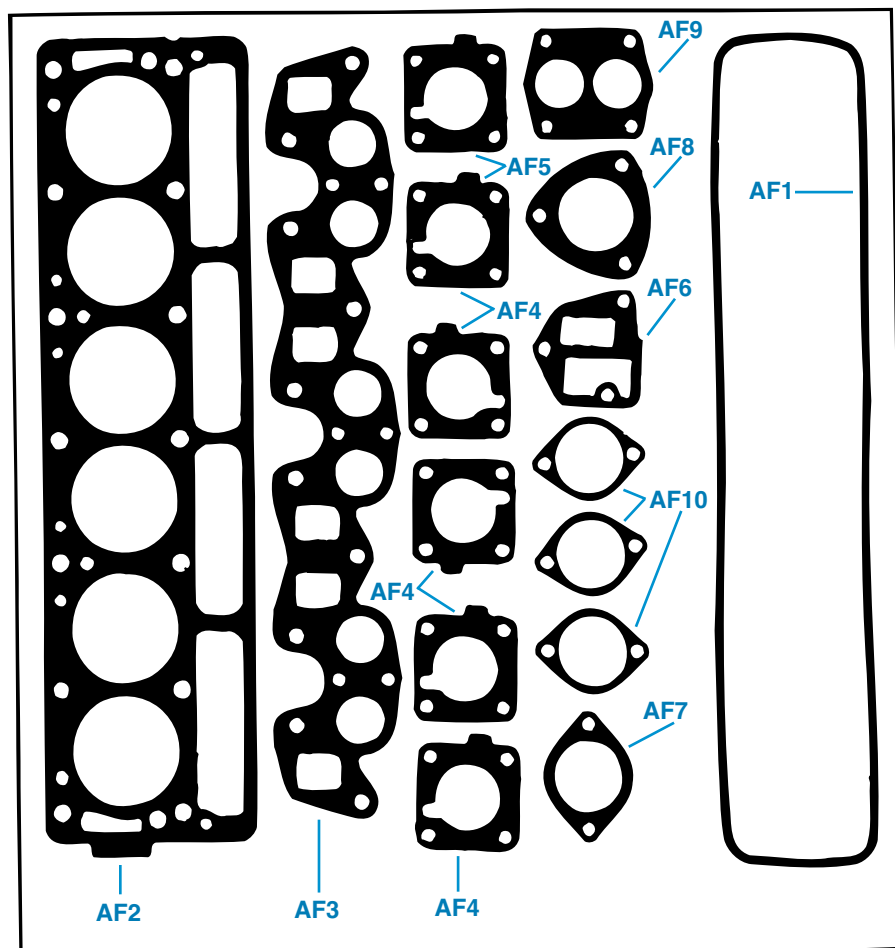
It seems that Vandervell bearings are made by a very expensive process. Molten lead copper alloy is poured to heated steel backing material. Other bearings are made by compressing powdered copper or other alloy onto the heated steel backing. Cast alloy material is recognized as the correct specification by automotive engineers for bearings of high load capacity.

The copper lead alloy surface on a Vandervell bearing is then overplated with lead indium. The lead indium overplate is fairly unique to Vandervell bearings, and it combines great fatigue strength with high load carrying capacity. The expensive lead indium alloy has the advantage over the lead-tin-copper or other tin alloys used in less expensive bearings. Tin tends to "migrate" into the copper lead inner layer. To prevent this, an intermediate plating of nickel is applied over the copper lead to act as a barrier. Regrettably nickel is not a bearing material, and when fatigue causes the tin alloy to break down, your crankshaft begins running on nickel which quickly creates a high wear situation.

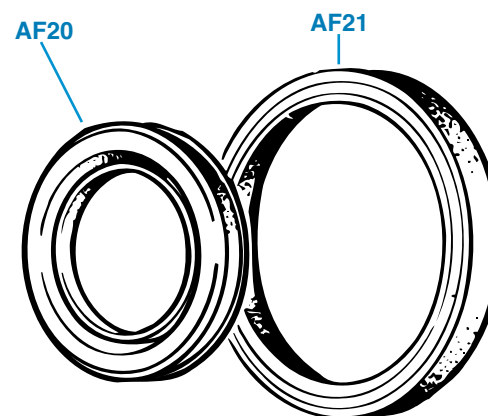
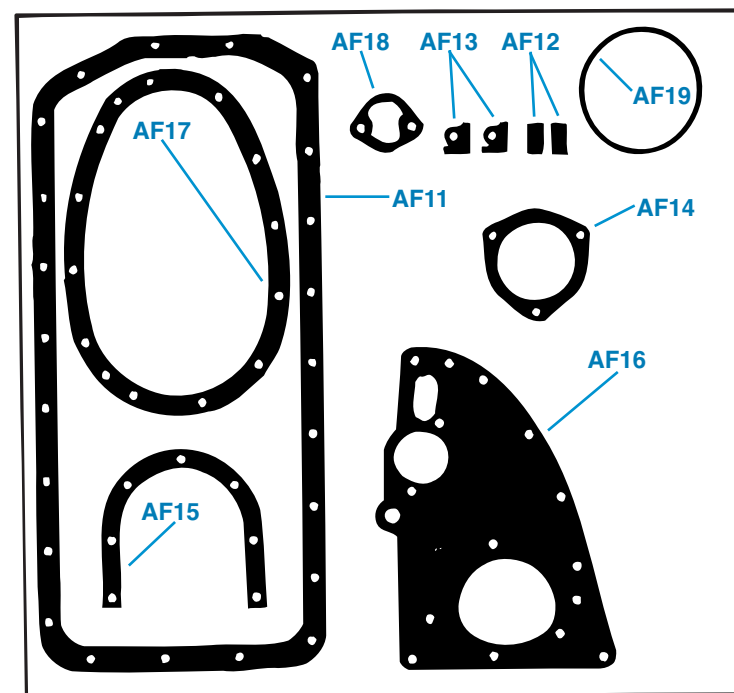
So, we at TRF have questioned whether or not we should sell the expensive bearing brand, and like most times, you get what you pay for. The rights parts aren't the cheapest ones. You can count on us for Vandervell engine bearings is you want the best.

PLATE AF

GASKET AND OIL SEALS



TRIUMPH TR6



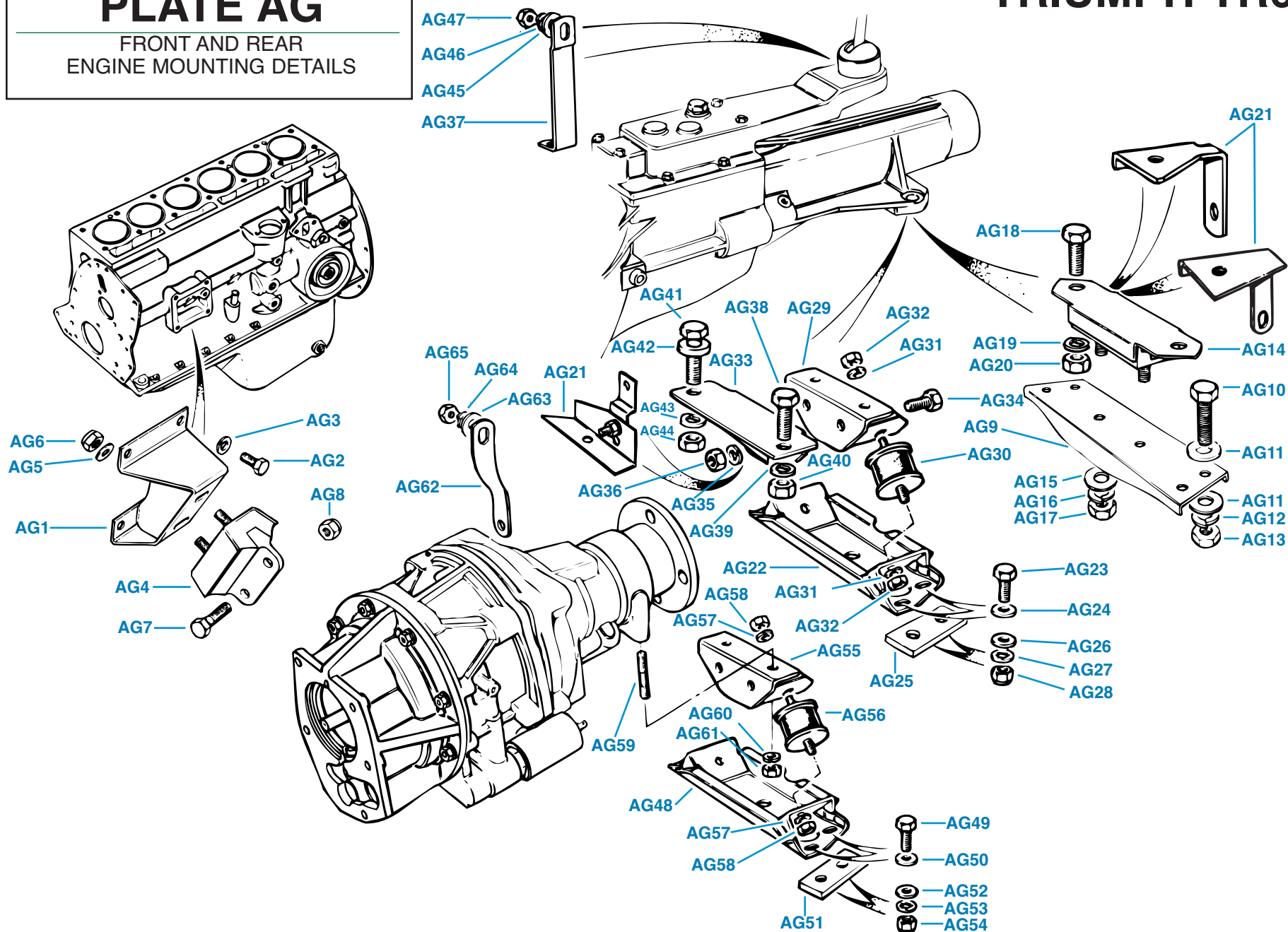
GASKETS AND OIL SEALS

| Plate No. | Part No. | Description | No. Off | Plate No. | Part No. | Description | No. Off |
|-----------|----------|---|---------|-----------|----------|---|---------|
| | | UPPER ENGINE GASKET SETS , carb models | | | | LOWER ENGINE GASKET SETS , P.I. models | |
| | 517276 | Upper Engine Gasket Set , fitted up to engine no. CC75000 | 1 | 517277 | | Lower Engine Gasket Set , fitted up to engine no. CR5000 | 1 |
| | 520884 | Upper Engine Gasket Set , fitted after engine no. CC75000 | 1 | GEG214 | | Lower Engine Gasket Set , fitted after engine no. CR5000 | 1 |
| | | UPPER ENGINE GASKET SETS , P.I. models | | | | INDIVIDUAL LOWER ENGINE GASKETS | |
| | 517278 | Upper Engine Gasket Set , fitted up to engine no. CP53891 approx. | 1 | AF11 | GEG515 | Gasket , oil sump | 1 |
| | 519956 | Upper Engine Gasket Set , fitted from engine no. CP53891 approx. up to CP75000 | 1 | AF12 | 36234 | Filling Piece , front bearing cap sealing block | 2 |
| | 520885 | Upper Engine Gasket Set , fitted after engine no. CP75000 | 1 | AF13 | UKC8321 | Gasket , front bearing cap sealing block | 2 |
| | | INDIVIDUAL UPPER ENGINE GASKETS | | AF14 | 138701 | Gasket , between water pump and water pump housing | 1 |
| AF1 | GEG413 | Gasket , rocker cover | 1 | AF15 | 105321 | Gasket , between rear seal housing and engine block | 1 |
| AF2 | GEG346 | Gasket , cylinder head, fitted up to engine no. CC/CP75000 | 1 | AF16 | 215350 | Gasket , between front engine plate and engine block | 1 |
| | GEG387 | Gasket , cylinder head, fitted after engine no. CC/CP75000 | 1 | AF17 | 211126 | Gasket , between timing cover and front engine plate | 1 |
| AF3 | 213641 | Gasket , manifold, carb models, fitted up to engine no. CC75000 | 1 | AF18 | 138791 | Gasket , between fuel pump and engine block, carb models | 1 |
| | GEG682 | Gasket , manifold, carb models, fitted after engine no. CC75000 | 1 | | 138791 | Gasket , between fuel pump blanking plate and engine block, P.I. models | 1 |
| | 214622 | Gasket , manifold, P.I. models, fitted up to engine no. CP53891 approx. | 1 | AF19 | 272539 | Seal , rubber, between oil filter canister and engine block (Generally supplied with oil filter.) | 1 |
| | 217948 | Gasket , manifold, P.I. models, fitted from engine no. CP53891 approx. up to CP75000 | 1 | | | FRONT ENGINE OIL SEALS | |
| | GEG682 | Gasket , manifold, P.I. models, fitted after engine no. CP75000 | 1 | AF20 | 125631 | Seal , oil, in timing cover, fitted up to engine no. CF3531 (carb models) and up to CR2665 (P.I. models) | 1 |
| AF4 | 148035 | Gasket , between carburettor and manifold, carb models only | 4 | | 155695 | Seal , oil, in timing cover, fitted after engine no. CF3531 (carb models) and after CR2665 (P.I. models) | 1 |
| AF5 | 148036 | Spacer , between carburettor and manifold, carb models only | 2 | | | TIMING COVER DETAILS (See Section AJ.) | |
| AF6 | 138792 | Gasket , between water pump housing and cylinder head | 1 | | | REAR ENGINE OIL SEALS | |
| AF7 | GTG103 | Gasket , thermostat housing cover | 1 | AF21 | 143456 | Seal , oil, rear engine | 1 |
| AF8 | GEG718 | Gasket , exhaust flange, single-pipe exhaust system, carb models, fitted up to comm. no. CC75000 | 1 | | | REAR ENGINE SEAL DETAILS (See Section AH.) | |
| AF9 | GEG724 | Gasket , exhaust flange, double-pipe exhaust system, P.I. models | 1 | | | | |
| | GEG724 | Gasket , exhaust flange, double-pipe exhaust system, carb models, fitted after comm. no. CC75000 | 1 | | | | |
| AF10 | 104939 | Gasket , shim, distributor flange | A/R | | | | |
| | | LOWER ENGINE GASKET SETS , carb models | | | | | |
| | 517275 | Lower Engine Gasket Set , fitted up to engine no. CF12500 | 1 | | | | |
| | GEG214 | Lower Engine Gasket Set , fitted after engine no. CF12500 | 1 | | | | |

PLATE AG

FRONT AND REAR
ENGINE MOUNTING DETAILS

TRIUMPH TR6



FRONT AND REAR ENGINE MOUNTING DETAILS

| Plate No. | Part No. | Description | No. Off |
|---|----------|---|---------|
| FRONT ENGINE MOUNTING DETAILS | | | |
| AG1 | 145385 | Mounting Bracket Assembly | 2 |
| | | HARDWARE , securing mounting brackets to engine block, carb models | |
| AG2 | HU906 | Screw , set | 8 |
| AG3 | WL209 | Washer , lock | 8 |
| | | HARDWARE , securing mounting brackets and air manifold support stay to engine block, P.I. models | |
| | HU906 | Screw , set | 6 |
| | WL209 | Washer , lock | 6 |
| | 128773 | Stud , R.H. side of engine | 2 |
| | WL209 | Washer , lock | 2 |
| | HN2009 | Nut | 2 |
| AG4 | 132669 | Mounting , flexible | 2 |
| | | HARDWARE , securing flexible mounting to mounting bracket | |
| AG5 | WP9 | Washer , plain | 4 |
| AG6 | TN3209 | Nut , nyloc | 4 |
| | | HARDWARE , securing flexible mounting to chassis frame | |
| AG7 | HB909 | Bolt | 4 |
| AG8 | YN2909 | Nut , nyloc | 4 |
| REAR ENGINE (GEARBOX) MOUNTING DETAILS,) up to | | | |
| | | commission no. CF/CR | |
| AG9 | 211361 | Crossmember , rear engine mounting | 1 |
| | | HARDWARE , securing crossmember to chassis frame | |
| AG10 | HU906 | Screw , set | 4 |
| AG11 | WP9 | Washer , plain | 8 |
| AG12 | WL209 | Washer , lock | 4 |
| AG13 | HN2009 | Nut | 4 |
| AG14 | 104086 | Mounting Assembly , gearbox to chassis frame | 1 |
| | | HARDWARE , securing mounting to chassis frame crossmember | |
| AG15 | WP10 | Washer , plain | 2 |
| AG16 | WL210 | Washer , lock | 2 |
| AG17 | HN2010 | Nut | 2 |
| | | HARDWARE , securing mounting to gearbox | |
| AG18 | HB1112 | Bolt | 2 |
| AG19 | WL211 | Washer , lock | 2 |
| AG20 | HN2011 | Nut | 2 |
| AG21 | 149450 | Bracket , exhaust (See Sections BZ and CA.) | 2 |

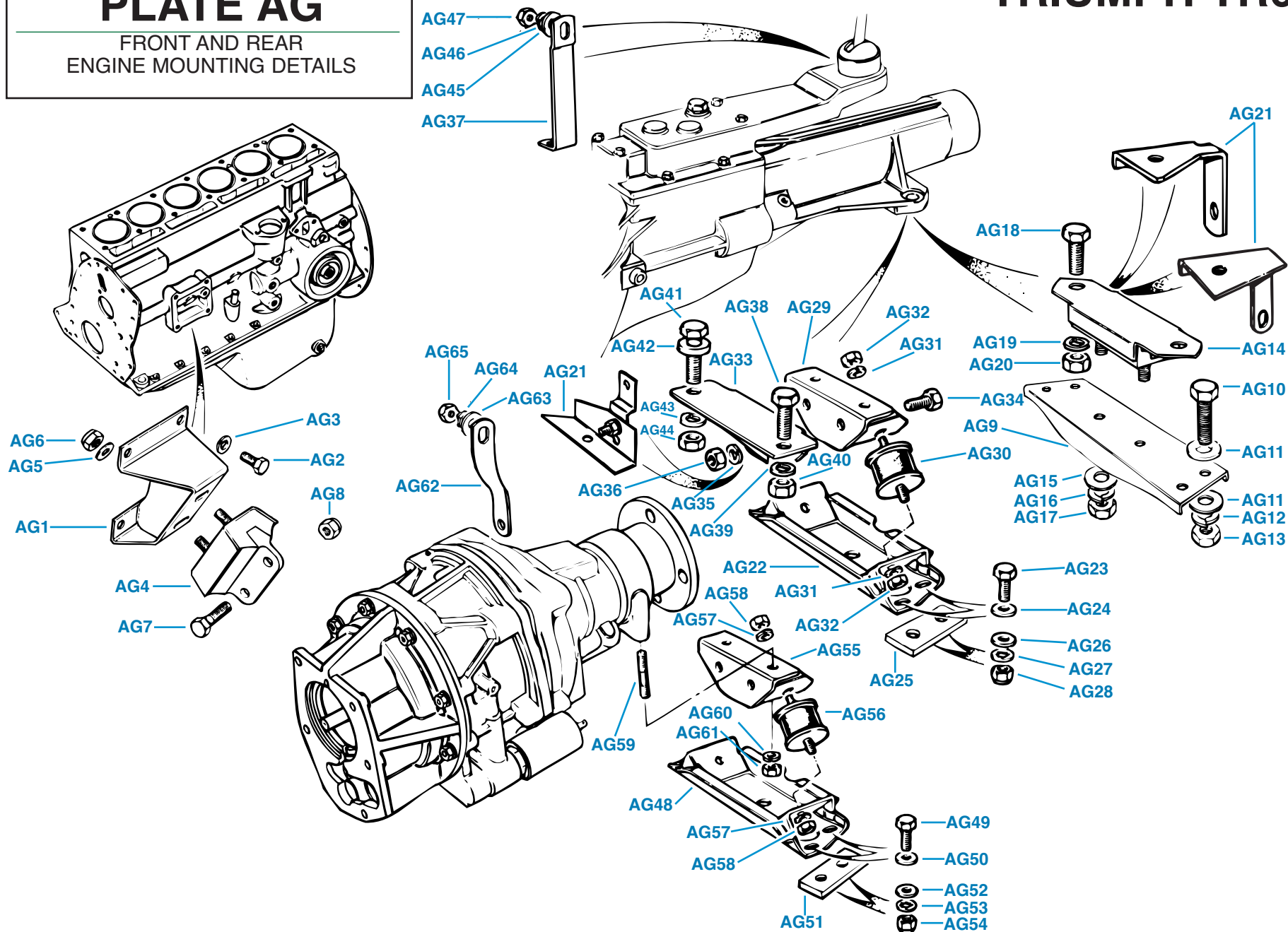
| Plate No. | Part No. | Description | No. Off |
|--|----------|--|---------|
| REAR ENGINE (GEARBOX) MOUNTING DETAILS, | | | |
| | | non-overdrive gearboxes only, after comm. no. CF | |
| AG22 | 218275 | Crossmember , rear engine mounting | 1 |
| | | HARDWARE , securing crossmember to chassis frame | |
| AG23 | HU910 | Screw , set | 4 |
| AG24 | WP9 | Washer , plain | 4 |
| AG25 | 160120 | Spacer | 2 |
| AG26 | WP9 | Washer , plain | 4 |
| AG27 | WL209 | Washer , lock | 4 |
| AG28 | HN2009 | Nut , nyloc | 4 |
| | | Please Note: Part no. 160120 may have been deleted on later cars; hardware may vary slightly from car to car | |
| AG29 | 160118 | Rear Engine Mounting Bracket , main | 1 |
| AG30 | 150403 | Mounting , flexible | 2 |
| | | HARDWARE , securing flexible mountings to crossmember and to main mounting bracket | |
| AG31 | WL208 | Washer , lock | 4 |
| AG32 | HN2008 | Nut | 4 |
| AG33 | 160117 | Rear Engine Mounting Bracket , auxiliary | 1 |
| | | HARDWARE , securing auxiliary mounting bracket to main mounting bracket | |
| AG34 | HU907 | Screw , set | 2 |
| AG35 | WL209 | Washer , lock | 2 |
| AG36 | HN2009 | Nut | 2 |
| AG37 | 157644 | Bracket , steady, gearbox | 1 |
| | | HARDWARE , securing gearbox and steady bracket to auxiliary mounting bracket | |
| AG38 | HB1112 | Bolt , L.H. side | 1 |
| AG39 | WL211 | Washer , lock, L.H. side | 1 |
| AG40 | HN2011 | Nut , L.H. side | 1 |
| AG41 | HB1114 | Bolt , R.H. side | 1 |
| AG42 | 131690 | Spacer , R.H. side | 1 |
| AG43 | WE611 | Washer , lock | 1 |
| AG44 | JN2111 | Nut , jam | 1 |
| | | HARDWARE , securing steady bracket to shift lever tower, to stud retaining gear lever | |
| AG45 | WP21 | Washer , plain | 1 |
| AG46 | WL208 | Washer , lock | 1 |
| AG47 | JN2108 | Nut , jam | 1 |

(Continued on next page.)

PLATE AG

FRONT AND REAR
ENGINE MOUNTING DETAILS

TRIUMPH TR6



FRONT AND REAR ENGINE MOUNTS

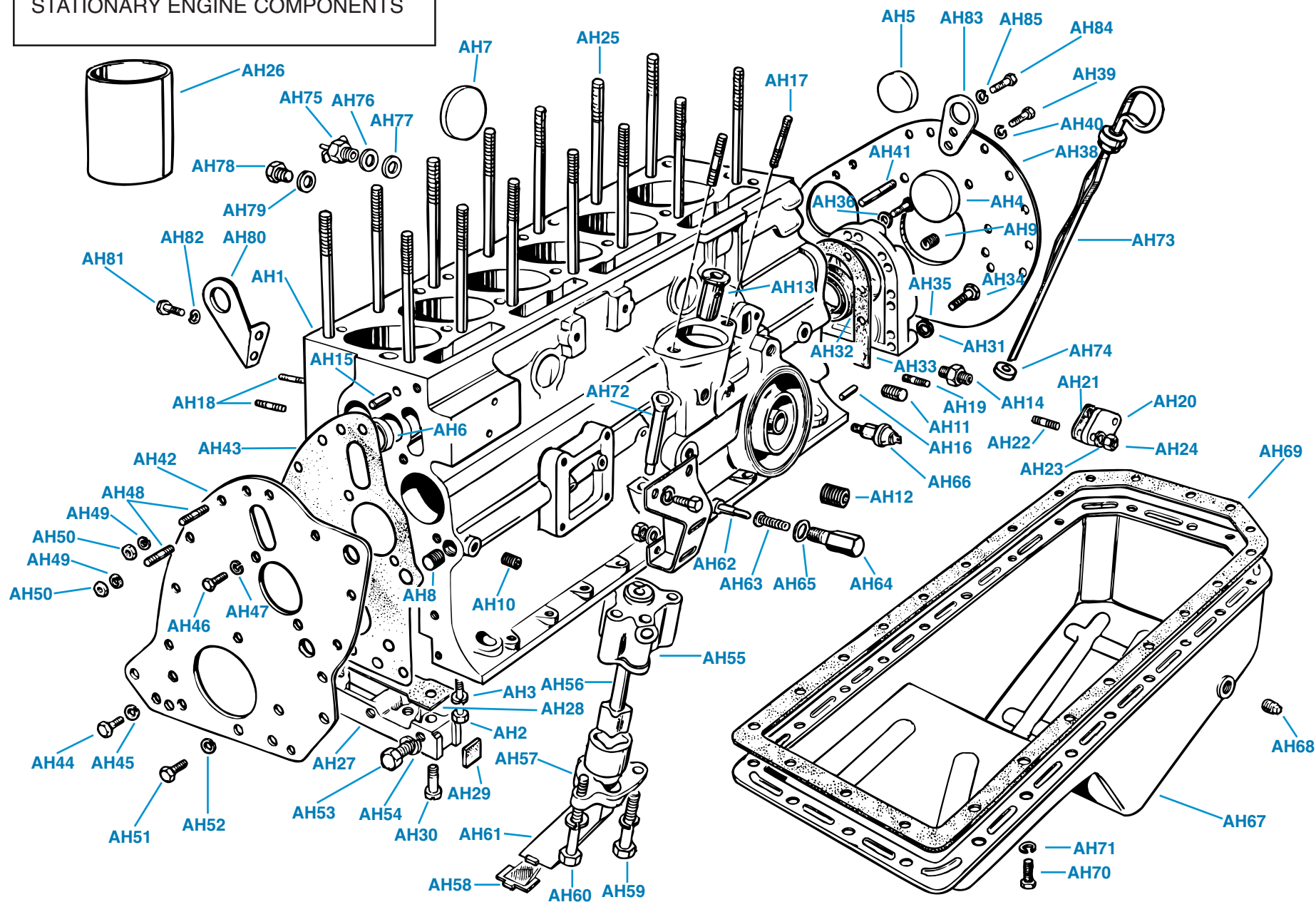
| Plate No. | Part No. | Description | No. Off |
|---|----------|--|---------|
| REAR ENGINE (GEARBOX) MOUNTING DETAILS, J-type | | | |
| | | overdrive gearboxes only, after comm. no. CF | |
| AG48 | 218275 | Crossmember , rear engine mounting | 1 |
| | | HARDWARE , securing crossmember to chassis frame | |
| AG49 | HU910 | Screw , set | 4 |
| AG50 | WP9 | Washer , plain | 4 |
| AG51 | 160120 | Spacer | 2 |
| AG52 | WP9 | Washer , plain | 4 |
| AG53 | WL209 | Washer , lock | 4 |
| AG54 | HN2009 | Nut , nyloc | 4 |
| | | Please Note: Part no. 160120 may have been deleted on later cars; hardware may vary slightly from car to car. | |
| AG55 | 160118 | Rear Engine Mounting Bracket | 1 |
| AG56 | 150403 | Mounting , flexible | 2 |
| | | HARDWARE , securing flexible mountings to crossmember and to main mounting bracket | |
| AG57 | WL208 | Washer , lock | 4 |
| AG58 | HN2008 | Nut | 4 |
| | | HARDWARE , securing gearbox to rear engine mounting bracket | |
| AG59 | 160219 | Stud | 2 |
| AG60 | WL209 | Washer , lock | 2 |
| AG61 | HN2009 | Nut | 2 |
| AG62 | 160189 | Bracket , steady, shift lever tower to stud on R.H. side of overdrive case | 1 |
| | | HARDWARE , securing steady bracket to shift lever tower, to stud retaining gear lever | |
| AG63 | WP21 | Washer , plain | 1 |
| AG64 | WL208 | Washer , lock | 1 |
| AG65 | JN2108 | Nut , jam | 1 |

| Plate No. | Part No. | Description | No. Off |
|-----------|----------|-------------|---------|
|-----------|----------|-------------|---------|

PLATE AH

STATIONARY ENGINE COMPONENTS

TRIUMPH TR6



STATIONARY ENGINE COMPONENTS

| Plate No. | Part No. | Description | No. Off |
|-----------|----------|---|---------|
| AH1 | 517611 | ENGINE BLOCK ASSEMBLY , fitted up to comm. no. CC/CP75000 | 1 |
| | 520880 | ENGINE BLOCK ASSEMBLY , fitted from comm. no. CC/CP75000 up to CF/CR1 | 1 |
| | UKC902 | ENGINE BLOCK ASSEMBLY , fitted after comm. no. CF/CR1 HARDWARE , securing bearing caps to engine block | 1 |
| AH2 | HB1024 | Bolt | 8 |
| AH3 | WL210 | Washer , lock | 8 |
| | | CORE PLUGS | |
| AH4 | 148353 | Plug , core, rear of camshaft | 1 |
| AH5 | 144686 | Plug , core, rear face and L.H. side of engine block | 3 |
| AH6 | 144687 | Plug , core, front face of block | 1 |
| AH7 | 144688 | Plug , core, front face and R.H. side engine block | 5 |
| | | OIL GALLERY PLUGS | |
| AH8 | PS1103 | Plug , core, oil gallery, front | 1 |
| AH9 | 118632 | Plug , dry seal, oil gallery, rear | 1 |
| AH10 | 118686 | Plug , oil gallery | 6 |
| AH11 | PU1404 | Plug , oil gallery | 1 |
| AH12 | 116511 | Plug , oil gallery | 1 |
| | | MISCELLANEOUS FITTINGS | |
| AH13 | 149776 | Bush , oil pump drive shaft | 1 |
| AH14 | 143943 | Adaptor , oil pressure gauge pipe, carb models only | 1 |
| AH15 | DP514 | Dowel , timing cover attachment | 2 |
| AH16 | DP612 | Dowel , rear engine plate attachment | 2 |
| | | STUDS , securing various components to engine block | |
| AH17 | 101962 | Stud , securing distributor pedestal to engine block | 2 |
| AH18 | 128773 | Stud , securing R.H. engine mounting bracket and air manifold stay to engine block, P.I. models only | 2 |
| AH19 | 100433 | Stud , securing fuel pump to engine block, carb models, fitted earlier | 2 |
| | 101962 | Stud , securing fuel pump to engine block, carb models, fitted later | 2 |
| | | FUEL PUMP BLANKING DETAILS , P.I. models | |
| AH20 | 147876 | Plate , blanking fuel pump aperture | 1 |
| AH21 | 138791 | Gasket , between plate and engine block HARDWARE , securing plate and gasket to engine block | 1 |
| AH22 | 100433 | Stud | 2 |
| AH23 | WL208 | Washer , lock | 2 |
| AH24 | HN2008 | Nut | 2 |
| | | CYLINDER HEAD ATTACHMENT STUDS | |
| | | CYLINDER HEAD ATTACHMENT STUDS , U.S.A., fitted up to engine no. CC66569 | |
| AH25 | 146200 | Stud , shorter | 13 |
| | 156274 | Stud , longer | 1 |

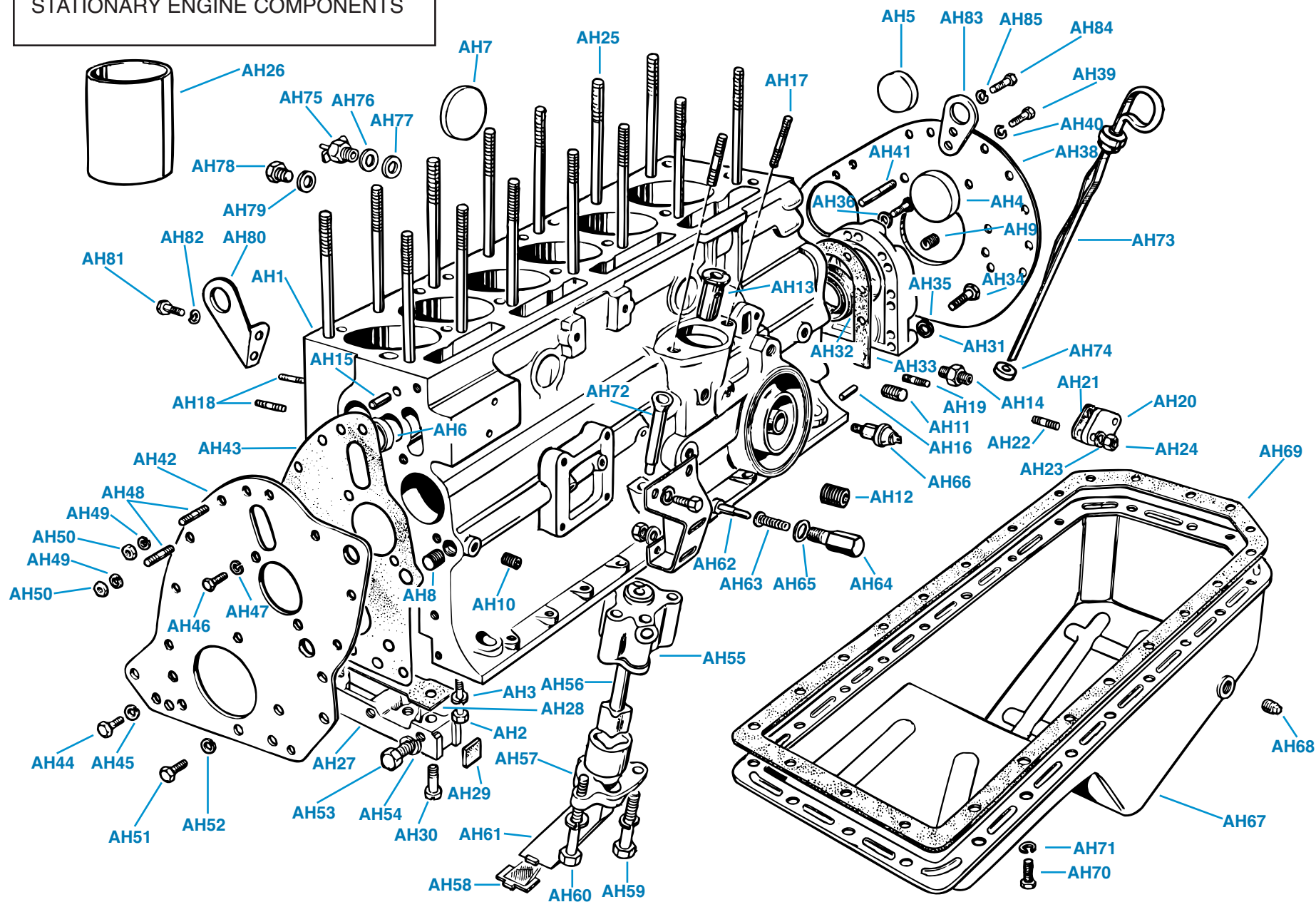
| Plate No. | Part No. | Description | No. Off |
|-----------|----------|---|---------|
| | | CYLINDER HEAD ATTACHMENT STUDS—Continued | |
| | | CYLINDER HEAD ATTACHMENT STUDS , U.S.A., fitted from engine no. CC66569 up to CC75000 | |
| | 157231 | Stud , shorter | 12 |
| | 156274 | Stud , longer | 2 |
| | | CYLINDER HEAD ATTACHMENT STUDS , U.S.A., fitted after engine no. CC75000 | |
| | 157231 | Stud , shorter | 12 |
| | 156274 | Stud , longer | 2 |
| | 146200 | Stud , cylinder head attachment, non-U.S.A. markets, after engine no. CC/CP66569 | 14 |
| | 157231 | Stud , cylinder head attachment, non-U.S.A. markets, after engine no. CC/CP66569 | 14 |
| | | CYLINDER LINERS , for restoring badly worn or damaged cylinder bores; see shop manual for fitting instructions before purchase | |
| AH26 | 145021 | Liner , cylinder, fitted up to comm. no. CF12500/CR5000 | A/R |
| | 158942 | Liner , cylinder, fitted after comm.no. CF12500/CR5000 | A/R |
| | | FRONT SEALING BLOCK DETAILS | |
| AH27 | 151134 | Block , sealing, front | 1 |
| AH28 | 150022 | Gasket , between sealing block and engine block | 2 |
| AH29 | 36234 | Piece , filling | 2 |
| AH30 | 100501 | Screw , securing sealing block to engine block | 2 |
| | | REAR OIL SEAL DETAILS | |
| AH31 | 212622 | Housing , oil seal, fitted earlier | 1 |
| | 156530 | Housing , oil seal, fitted later | 1 |
| AH32 | 143456 | Seal , oil, crankshaft, rear | 1 |
| AH33 | 105321 | Gasket , between oil seal housing and engine block | 1 |
| | | HARDWARE , securing oil seal assembly to engine block | |
| AH34 | HB809 | Bolt | 7 |
| AH35 | WL208 | Washer , lock | 6 |
| AH36 | 500469 | Washer , copper, fitted under head of bolt to prevent oil leakage | 1 |
| | | REAR ENGINE PLATE DETAILS | |
| AH38 | 211505 | Rear Engine Plate | 1 |
| | | HARDWARE , securing rear engine plate to engine block | |
| AH39 | HU807 | Screw , set | 7 |
| AH40 | WL208 | Washer , lock | 7 |
| AH41 | 139836 | Stud | 3 |

(Continued on next page.)

PLATE AH

STATIONARY ENGINE COMPONENTS

TRIUMPH TR6



STATIONARY ENGINE COMPONENTS

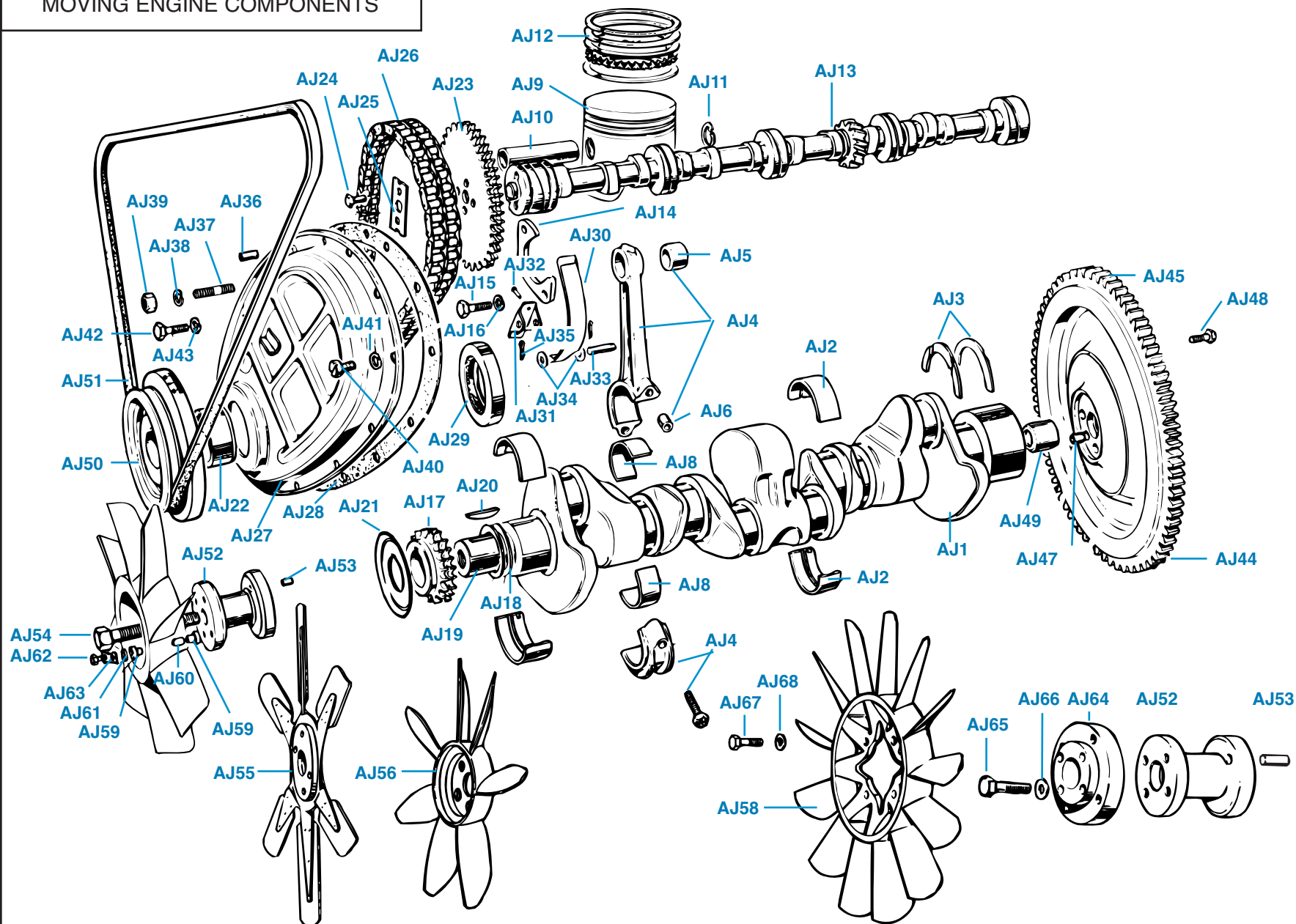
| Plate No. | Part No. | Description | No. Off |
|------------------------------------|----------|---|---------|
| FRONT ENGINE PLATE DETAILS | | | |
| AH42 | 215349 | Front Engine Plate , P.I. models | 1 |
| | 215349 | Front Engine Plate , carb models up to comm. no. CF35000 | 1 |
| | TKC2105 | Front Engine Plate , carb models after comm. no. CF35000 | 1 |
| AH43 | 215350 | Gasket , between front engine plate and engine block | 1 |
| | | HARDWARE , securing front engine plate to engine block | |
| AH44 | HU806 | Screw , set | 3 |
| AH45 | WL208 | Washer , lock | 3 |
| | | HARDWARE , securing front engine plate and camshaft locating plate to engine block | |
| AH46 | HU807 | Screw , set | 2 |
| AH47 | WL208 | Washer , lock | 2 |
| | | HARDWARE , securing front engine plate and timing cover to engine block | |
| AH48 | 100433 | Stud | 2 |
| AH49 | WL208 | Washer , lock | 2 |
| AH50 | HN2008 | Nut | 2 |
| AH51 | HU807 | Screw , set | 5 |
| AH52 | WL208 | Washer , lock | 5 |
| | | HARDWARE , securing front engine plate to front sealing block | |
| AH53 | PT805 | Screw , set | 2 |
| AH54 | WL208 | Washer , lock | 2 |
| OIL PUMP DETAILS | | | |
| | 149634 | OIL PUMP ASSEMBLY , fitted up to engine no. CC66296 | 1 |
| AH55 | 127732 | Body Assembly | 1 |
| | 104963 | Plug , core, oil pump body | 1 |
| AH56 | 508975 | Rotor and Spindle Assembly | 1 |
| AH57 | 214842 | Cover , oil pump body | 1 |
| AH58 | 149621 | Filter , oil pump | 1 |
| AH59 | HB724 | Bolt | 2 |
| AH60 | HB727 | Bolt | 1 |
| AH61 | WL207 | Washer , lock | 3 |
| | 217488 | OIL PUMP ASSEMBLY , fitted after engine no. CC66296 | 1 |
| | 217486 | Body Assembly | 1 |
| | 519569 | Rotor and Spindle Assembly | 1 |
| | 217487 | Cover , oil pump body | 1 |
| | 155370 | Strainer Assembly | 1 |
| | 155371 | Nut , locking strainer pipe to cover | 1 |
| | HB726 | Bolt | 3 |
| | WL207 | Washer , lock | 3 |
| OIL PRESSURE RELIEF DETAILS | | | |
| AH62 | 132107 | Piston , relief valve | 1 |
| AH63 | 131535 | Spring | 1 |
| AH64 | 107246 | Plug | 1 |
| AH65 | 501258 | Seal , plug | 1 |

| Plate No. | Part No. | Description | No. Off |
|---|----------|---|---------|
| OIL PRESSURE SWITCHES | | | |
| AH66 | 121398 | Switch , oil pressure, one plug connection, fitted to all P.I. models | 1 |
| | 121398 | Switch , oil pressure, one plug connection, fitted to carb models up to engine no. CF1 UE | 1 |
| | 159784 | Switch , oil pressure, three plug connections, fitted to carb models after engine no. CF1 UE | 1 |
| OIL SUMP DETAILS | | | |
| AH67 | 307836 | Oil Sump Assembly , fitted up to comm. no. CF12500/CR5000 | 1 |
| | 307834 | Oil Sump Assembly , fitted after comm. no. CF12500/CR5000 | 1 |
| AH68 | 114774 | Plug , oil drain | 1 |
| | 153452 | Plug , oil drain; alternative to 114774 | 1 |
| AH69 | 211125 | Gasket , oil sump | 1 |
| | | HARDWARE , securing oil sump to engine block | |
| AH70 | HU805 | Screw , set | 23 |
| AH71 | WL208 | Washer , lock | 23 |
| OIL DIPSTICK DETAILS | | | |
| AH72 | 127652 | Tube , dipstick | 1 |
| AH73 | 147712 | DIPSTICK ASSEMBLY | 1 |
| AH74 | 32307 | Washer , felt, sealing dipstick | 1 |
| WATER DRAIN DETAILS | | | |
| WATER DRAIN DETAILS , earlier fitment | | | |
| AH75 | 146326 | Tap , water drain | 1 |
| AH76 | WF511 | Washer , fibre | A/R |
| AH77 | WF525 | Washer , fibre | A/R |
| WATER DRAIN DETAILS , later fitment | | | |
| AH78 | 129077 | Plug , water drain | 1 |
| AH79 | WF511 | Washer , fibre | 1 |
| ENGINE LIFTING DETAILS | | | |
| AH80 | 123716 | Eye , lifting, front, carb models | 1 |
| | 123716 | Eye , lifting, front, P.I. models, up to comm. no. CR12500 | 1 |
| | UKC1190 | Eye , lifting, front, P.I. models, after comm. no. CF12500 | 1 |
| | | HARDWARE , securing front lifting eye to engine block | |
| | | Screw , set | 2 |
| AH81 | HU805 | Washer , lock | 2 |
| AH82 | WL208 | Eye , lifting, rear | 1 |
| AH83 | 145987 | Please Note: On carb models after comm. no. CF35000 , a diverter valve bracket was fitted along with the rear lifting eye apparently. This bracket is listed in Section BJ. On the very latest carb models, the rear lifting eye and diverter valve bracket were combined into one part; however, no part no. is available for this component. | |
| HARDWARE , securing rear lifting eye to engine block | | | |
| AH84 | HU805 | Screw , set, fitted up to comm. no. CF35000 | 2 |
| | HU806 | Screw , set, fitted after comm. no. CF35000 to cars with double brackets | 2 |
| | HU805 | Screw , set, fitted after comm. no. CF35000 to cars with single brackets | 2 |
| AH85 | WL208 | Washer , lock | 2 |

PLATE AJ

MOVING ENGINE COMPONENTS

TRIUMPH TR6



MOVING ENGINE COMPONENTS

| Plate No. | Part No. | Description | No. Off |
|------------------------|----------|---|---------|
| CRANKSHAFTS | | | |
| AJ1 | 307546 | Crankshaft, carb models, fitted up to eng. no. CC50000 | 1 |
| | 311322 | Crankshaft, carb models, fitted after eng. no. CC50000 | 1 |
| | 214889 | Crankshaft, P.I. models, fitted up to eng. no. CP50000 | 1 |
| | 216538 | Crankshaft, P.I. models, fitted from eng. no. CP50000 up to CP52319 | 1 |
| | 311322 | Crankshaft, P.I. models, fitted after eng. no. CP52319 | 1 |
| AJ2 | | MAIN BEARING SETS (See Section AE.) | |
| AJ3 | | THRUST WASHER SETS (See Section AE.) | |
| CONNECTING ROD DETAILS | | | |
| AJ4 | 146454 | CONNECTING ROD ASSEMBLY | 6 |
| AJ5 | 119813 | Bush, small end | 6 |
| AJ6 | 107401 | Dowel, hollow, locating | 12 |
| AJ7 | 138529 | Bolt, connecting rod, fitted up to eng. no. CF42034 and contemporary CR engine nos. | 12 |
| | UKC2598 | Bolt, connecting rod, fitted after eng. no. CF42034 and contemporary CR engine nos. | 12 |
| AJ8 | | CONNECTING ROD BEARINGS (See Section AE.) | |
| AJ9 | | PISTONS (See Section AE.) | |
| AJ10 | 149215 | Pin, gudgeon | 6 |
| AJ11 | 508978 | Circlip, retaining gudgeon pins | 12 |
| AJ12 | | PISTON RING SETS (See Section AE.) | |
| CAMSHAFT DETAILS | | | |
| AJ13 | 307621 | Camshaft, carb models, fitted up to eng. no. CF12500 | 1 |
| | 311399 | Camshaft, carb models, fitted after eng. no. CF12500 | 1 |
| | 307689 | Camshaft, P.I. models, fitted up to eng. no. CR12500 | 1 |
| | 311399 | Camshaft, P.I. models, fitted after eng. no. CR12500 | 1 |
| AJ14 | 105114 | Plate, locating camshaft | 1 |
| | | HARDWARE, securing locating plate and front engine plate to engine block | |
| AJ15 | HU807 | Screw, set | 2 |
| AJ16 | WL208 | Washer, lock | 2 |
| TIMING DETAILS | | | |
| AJ17 | 145864 | Chainwheel, crankshaft, duplex chain | 1 |
| AJ18 | 145275 | Shim, chainwheel alignment, .004 inch | A/R |
| AJ19 | 145276 | Shim, chainwheel alignment, .006 inch | A/R |
| AJ20 | 133234 | Key, locating chainwheel on crankshaft | 1 |
| AJ21 | 119390 | Deflector, oil, crankshaft | 1 |
| AJ22 | 133235 | Sleeve, timing cover oil seal | 1 |
| AJ23 | 145865 | Chainwheel, camshaft, duplex chain | 1 |
| | | HARDWARE, securing chainwheel to camshaft | |
| AJ24 | 100500 | Screw, set | 2 |
| AJ25 | 36411 | Plate, locking screws | 1 |
| AJ26 | 145870 | Timing Chain Assembly, duplex | 1 |
| AJ27 | 214678 | Timing Cover Assembly | 1 |
| AJ28 | 211126 | Gasket, timing cover | 1 |

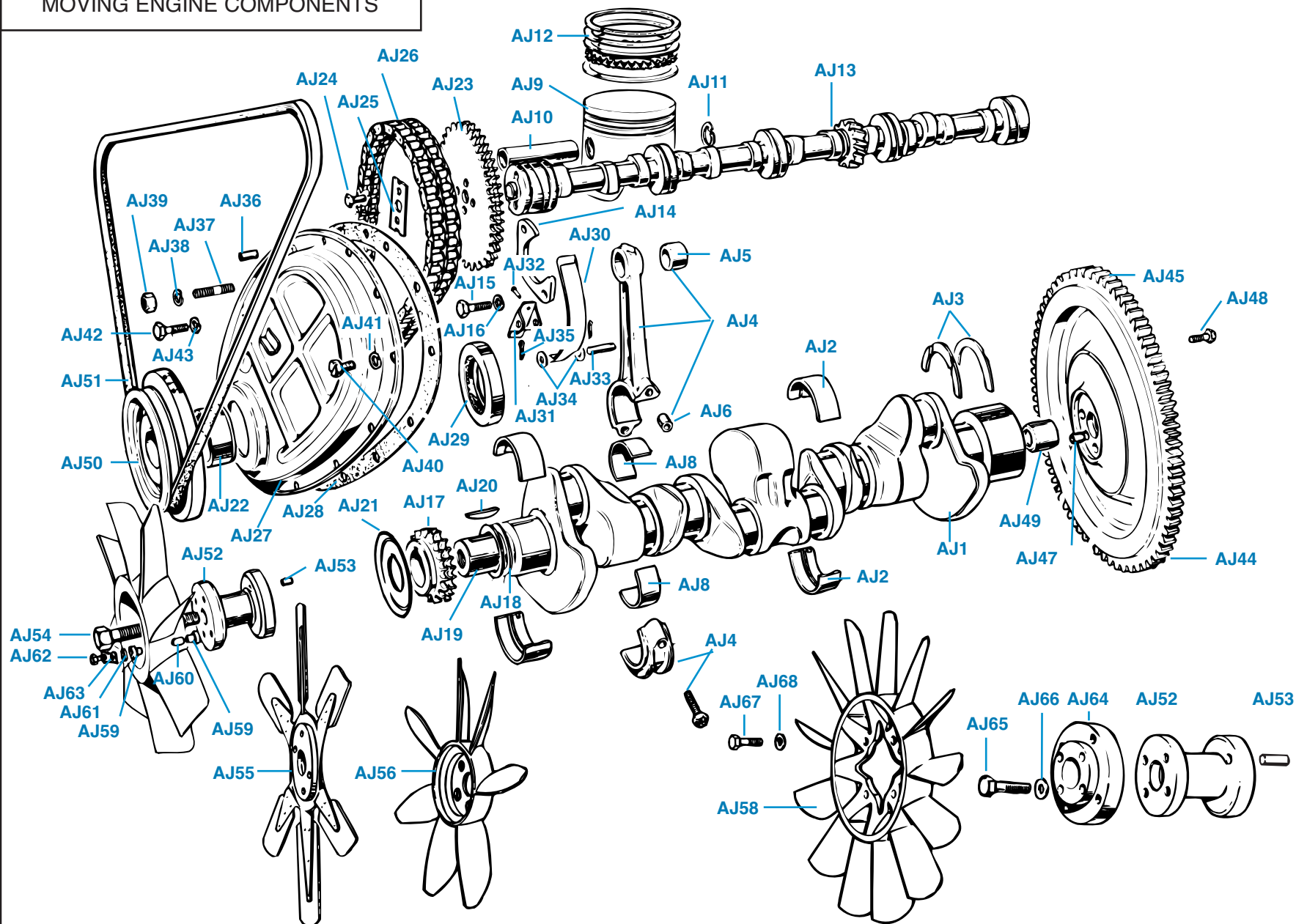
| Plate No. | Part No. | Description | No. Off |
|--|----------|---|---------|
| TIMING DETAILS—Continued | | | |
| TIMING COVER OIL SEALS | | | |
| AJ29 | 125631 | Seal , oil, carb models up to eng. no. CF3531; P.I. models up to eng. no. CR265 | 1 |
| | 155695 | Seal , oil, carb models after eng. no. CF3531; P.I. models after eng. no. CR265 | 1 |
| TIMING CHAIN TENSIONER DETAILS | | | |
| AJ30 | 145866 | Tensioner , timing chain | 1 |
| AJ31 | 43752 | Plate , anchor | 1 |
| AJ32 | SP91B3 | Rivet , securing anchor plate to timing cover | 2 |
| AJ33 | 33214 | Pin , anchor | 1 |
| AJ34 | WP18 | Washer , plain, on anchor pin | 2 |
| AJ35 | PC7 | Pin , cotter | 2 |
| HARDWARE , securing timing cover and front engine plate to engine block | | | |
| AJ36 | DP514 | Pin , dowel | 2 |
| AJ37 | 100433 | Stud | 2 |
| AJ38 | WL208 | Washer , lock | 2 |
| AJ39 | HN2008 | Nut | 2 |
| AJ40 | HU807 | Screw , set | 5 |
| AJ41 | WL208 | Washer , lock | 5 |
| AJ42 | PT803 | Screw , set | 5 |
| AJ43 | WL208 | Washer , lock | 5 |
| FLYWHEEL DETAILS | | | |
| AJ44 | 148041 | FLYWHEEL ASSEMBLY , up to engine no. CC/CP50000 | 1 |
| | 151214 | FLYWHEEL ASSEMBLY , after engine no. CC/CP50000 | 1 |
| AJ45 | 201350 | Gear , ring, starter | 1 |
| HARDWARE , securing flywheel to crankshaft | | | |
| AJ47 | 127883 | Dowel , locating, fitted earlier | 1 |
| AJ48 | 147299 | Bolt | 4 |
| AJ49 | 47246 | Bush , pilot, gearbox shaft to crankshaft, fitted up to eng. no. CC/CP50000 | 1 |
| | 151213 | Bush , pilot, gearbox shaft to crankshaft fitted after eng. no. CC/CP50000 | 1 |
| CRANKSHAFT PULLEY AND DAMPER ASSEMBLIES | | | |
| AJ50 | 214479 | Pulley and Damper Assembly , 3/8 inch pulley groove, fitted to all P.I. models | 1 |
| | 214479 | Pulley and Damper Assembly , 3/8 inch pulley groove, fitted to early carb models | 1 |
| | 217371 | Pulley and Damper Assembly , 1/2 inch pulley groove, fitted to later carb models | 1 |

(Continued on next page.)

PLATE AJ

MOVING ENGINE COMPONENTS

TRIUMPH TR6



MOVING ENGINE COMPONENTS

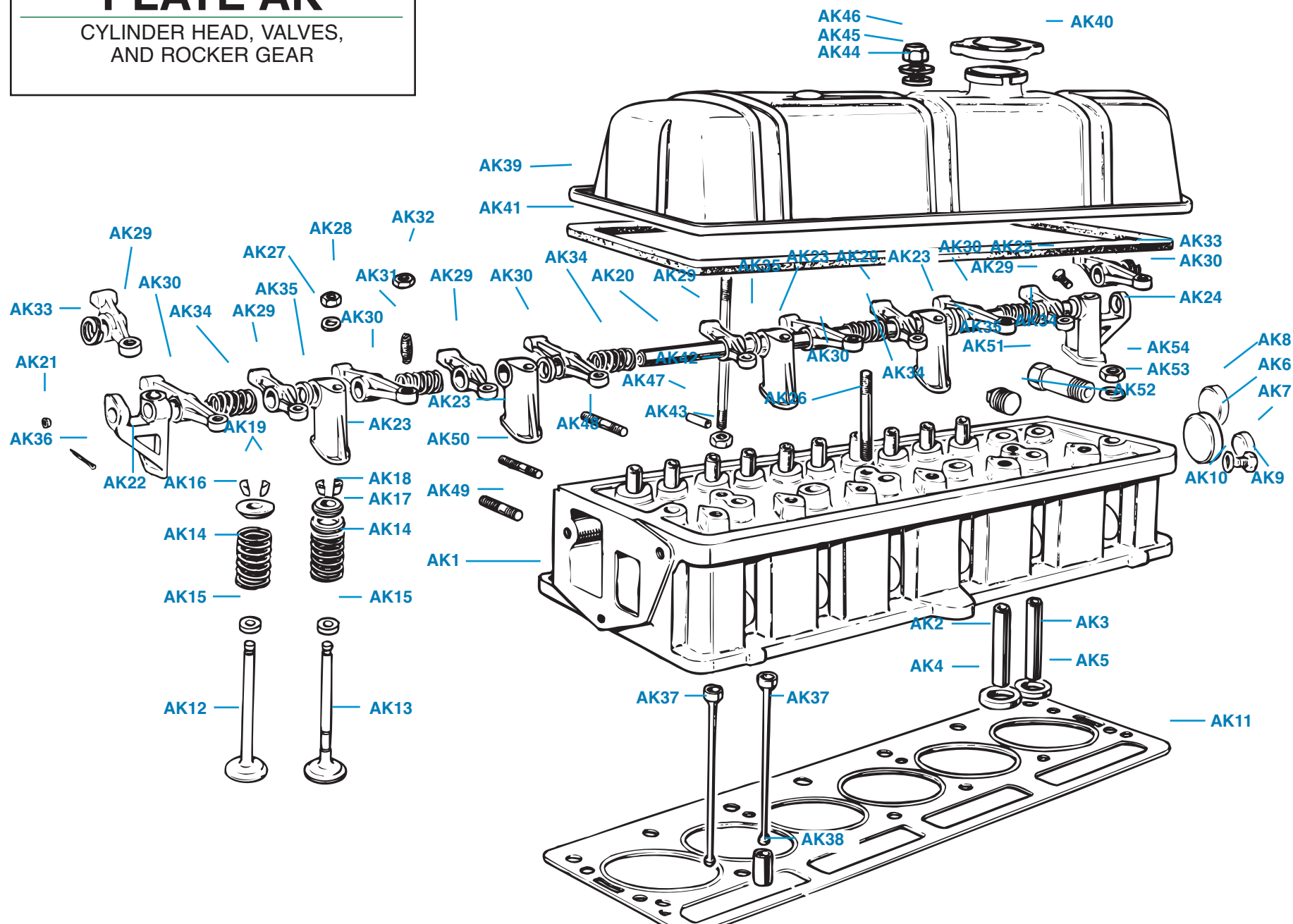
| Plate No. | Part No. | Description | No. Off |
|-----------|----------|--|---------|
| | | FAN BELTS | |
| | | FAN BELTS , carb models | |
| AJ51 | 214239 | Fan Belt , 3/8 inch width, early cars | 1 |
| | 217391 | Fan Belt , 1/2 inch width, up to eng. no. CF35000 | 1 |
| | TKC2165 | Fan Belt , 1/2 inch width, after eng. no. CF35000 | 1 |
| | | FAN BELTS , P.I. models | |
| | 214239 | Fan Belt , 3/8 inch width, up to eng. no. CR5000 | 1 |
| | GFB142 | Fan Belt , 3/8 inch width, after eng. no. CR5000 | 1 |
| | | Please Note: When replacing fan belts, insure that crankshaft pulley, water pump pulley, and alternator pulley all have the same width, and then choose the corresponding fan belt. | |
| AJ52 | 148831 | Extension , crankshaft, front | 1 |
| AJ53 | DP508 | Dowel , locating extension against pulley and damper assembly | 1 |
| AJ54 | 148832 | Bolt , securing crankshaft extension, pulley and damper to crankshaft | 1 |
| | | COOLING FAN DETAILS | |
| | | COOLING FANS , fitted to carb models | |
| AJ55 | 211986 | Fan Assembly , metal blades, carb models, questionable when and if fitted | 1 |
| AJ56 | 311868 | Fan Assembly , seven blades, yellow plastic, fitted up to eng. no. CC75000 | 1 |
| AJ57 | 308353 | Fan Assembly , eight blades, yellow plastic; alternative to 311868 | 1 |
| AJ58 | 312301 | Fan Assembly , thirteen blades, red plastic, fitted after eng. no. CC75000 | 1 |
| | | COOLING FANS , fitted to P.I. models | |
| | 308353 | Fan Assembly , eight blades, yellow plastic, fitted up to eng. no. CP52420 | 1 |
| | 311868 | Fan Assembly , seven blades, yellow plastic, fitted from eng. no. CP52421 up to CR1 | 1 |
| | 312301 | Fan Assembly , thirteen blades, red plastic, fitted after eng. no. CR1 | 1 |
| | RFK180 | FAN INSTALLATION KIT , securing fan to crankshaft extension, correct for all fans except for 312301 | 1 |
| AJ59 | 108496 | Bush , rubber | 8 |
| AJ60 | 108499 | Sleeve , metal | 4 |
| AJ61 | 108495 | Washer , plain | 4 |
| AJ62 | HB810 | Bolt | 4 |
| AJ63 | 107857 | Plate , lock, securing bolts | 2 |

| Plate No. | Part No. | Description | No. Off |
|-----------|----------|---|---------|
| | | COOLING FAN DETAILS—Continued | |
| | | FAN ATTACHMENT DETAILS , securing 312301 fan to crankshaft extension | |
| AJ64 | 157876 | Adaptor , crankshaft extension to fan | 1 |
| | | HARDWARE , securing adaptor to crankshaft extension | |
| AJ65 | HB813 | Bolt | 4 |
| AJ66 | WP34 | Washer , plain | 4 |
| | | HARDWARE , securing fan to adaptor | |
| AJ67 | HB810 | Bolt | 4 |
| AJ68 | WP34 | Washer , plain | 4 |

PLATE AK

CYLINDER HEAD, VALVES,
AND ROCKER GEAR

TRIUMPH TR6



CYLINDER HEAD, VALVES, AND ROCKER GEAR

| Plate No. | Part No. | Description | No. Off |
|---|----------|---|---------|
| CYLINDER HEADS | | | |
| CYLINDER HEAD ASSEMBLIES , with valves and springs, carb models | | | |
| | 516796 | Cylinder Head Assembly , 8.6 : 1 compression, fitted up to engine number CC75000 | 1 |
| | 520868 | Cylinder Head Assembly , 7.75 : 1 compression, fitted from engine no. CC75000 up to CF12500 | 1 |
| | UKC1421 | Cylinder Head Assembly , 7.5 : 1 compression, fitted after engine no. CF12500 (Cars with E.G.R. valves.) | 1 |
| CYLINDER HEADS , with guides but without valves and springs, carb models | | | |
| AK1 | 516797 | Cylinder Head , 8.6 : 1 compression fitted up to engine number CC75000 | 1 |
| | 520870 | Cylinder Head , 7.75 : 1 compression, fitted from engine number CC75000 up to CF12500 | 1 |
| | RTTC1860 | Cylinder Head , 7.5 : 1 compression, fitted after engine no. CF12500 (Cars with E.G.R. valves.) | 1 |
| CYLINDER HEAD ASSEMBLIES , with valves and springs, P.I. models | | | |
| | 516798 | Cylinder Head Assembly , 9.5 : 1 compression, fitted up to engine no. CP75000 | 1 |
| | 520869 | Cylinder Head Assembly , 9.5 : 1 compression, fitted from engine no. CP75000 up to CR5000 | 1 |
| | UKC1420 | Cylinder Head Assembly , 9.5 : 1 compression, fitted after engine number CR5000 | 1 |
| | 519780 | Cylinder Head Assembly , 9.5 : 1 compression, police cars only | 1 |
| CYLINDER HEADS , with guides but without valves and springs, P.I. models | | | |
| | 516799 | Cylinder Head , 9.5 : 1 compression, fitted up to engine number CP75000 | 1 |
| | 520870 | Cylinder Head , 9.5 : 1 compression, fitted from engine number CP75000 up to CR5000 | 1 |
| | 520871 | Cylinder Head , 9.5 : 1 compression, fitted after engine number CR5000 | 1 |
| | 519781 | Cylinder Head , 9.5 : 1 compression, police cars only | 1 |
| GUIDES AND SEATS | | | |
| STOCK VALVE GUIDES , cast iron | | | |
| AK2 | 58923 | Guide , valve, intake | 6 |
| AK3 | 111869 | Guide , valve, exhaust | 6 |
| HIGH PERFORMANCE VALVE GUIDES , silicon bronze | | | |
| | TRFCD13 | Guide , valve, intake | 6 |
| | TRFCD14 | Guide , valve, exhaust | 6 |

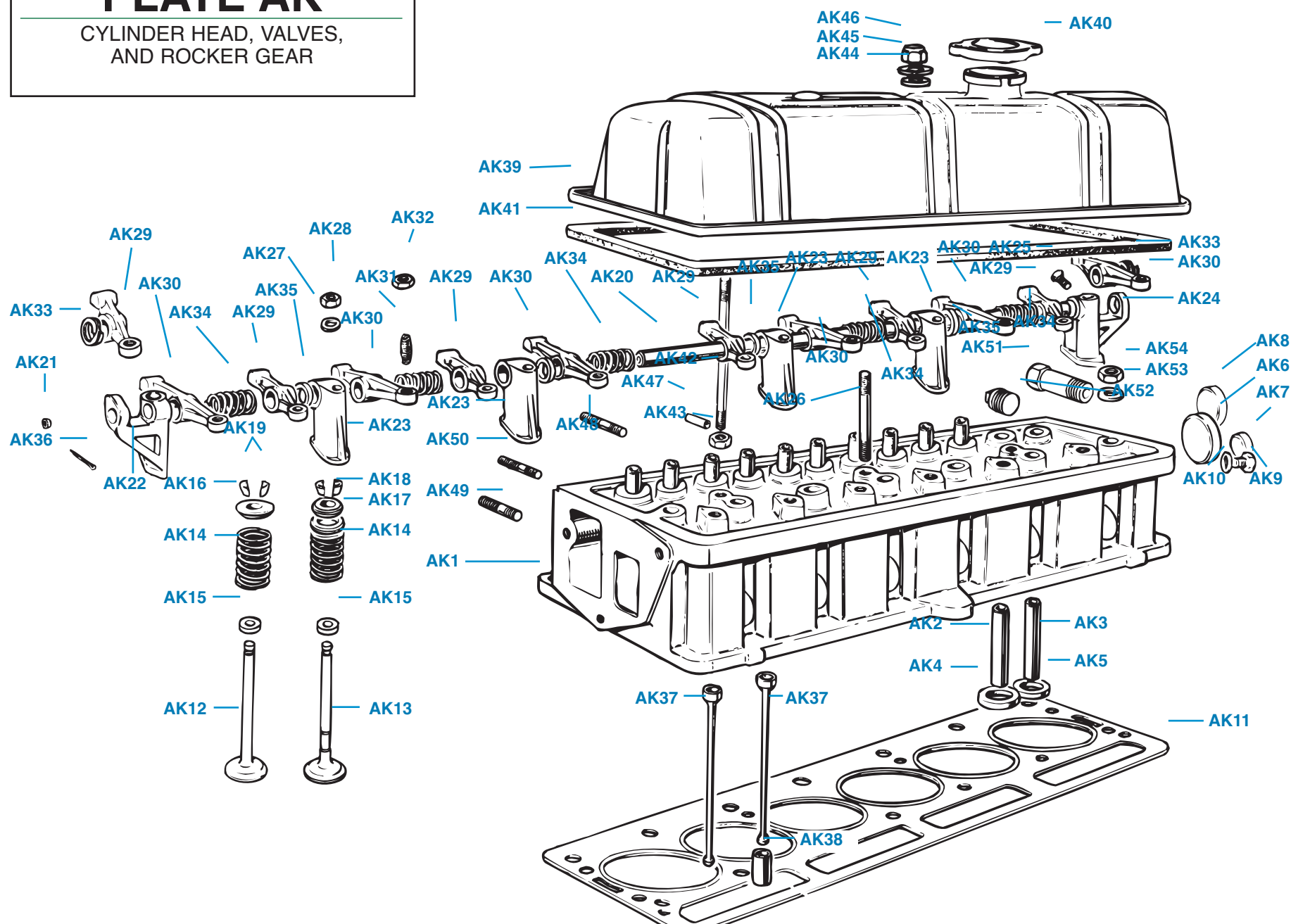
| Plate No. | Part No. | Description | No. Off |
|---|----------|--|---------|
| CYLINDER HEADS—Continued | | | |
| GUIDES AND SEATS—Continued | | | |
| VALVE SEATS (Hardened for use with unleaded fuel.) | | | |
| AK4 | 146496 | Insert , intake valve seat, fitted up to engine no. CF/CR1 | 6 |
| | 159903 | Insert , intake valve seat, fitted after engine number CF/CR1 | 6 |
| AK5 | 146497 | Insert , exhaust valve seat, fitted up to engine number CF/CR1 | 6 |
| | 159904 | Insert , exhaust valve seat, fitted after engine number CF/CR1 | 6 |
| CORE PLUGS | | | |
| | AK6 | Plug , core, bucket type, rear face of cylinder head | 1 |
| | AK7 | Plug , core, bucket type, rear face of cylinder head | 1 |
| | AK8 | Plug , core, P.I. models, fitted up to eng. no. CC75000 | 2 |
| | AK9 | Screw , set, plugging end of oil feed passage | 1 |
| | AK10 | Washer , copper sealing screw | 1 |
| CYLINDER HEAD GASKETS | | | |
| | AK11 | Gasket , cylinder head, fitted up to engine number CC/CP75000 | 1 |
| | 217291 | Gasket , cylinder head, fitted from engine number CC/CP75000 up to CF12500/CR5000 | 1 |
| | GEG387 | Gasket , cylinder head, fitted after engine number CF12500/CR5000 | 1 |
| VALVES | | | |
| | AK12 | Valve , intake | 6 |
| | AK13 | Valve , exhaust, fitted up to engine number CF/CR1 | 6 |
| | 159873 | Valve , exhaust, fitted after engine number CF/CR1 | 6 |
| VALVE SPRINGS | | | |
| | RFK383 | VALVE SPRING SET , carb models, fitted up to engine number CC75000 | 1 |
| | AK14 | Spring , valve | 12 |
| | RFK384 | VALVE SPRING SET , P.I. models, fitted up to engine number CP75000 | 1 |
| | 149633 | Spring , valve, outer | 12 |
| | 102564 | Spring , valve, inner | 12 |
| | RFK385 | VALVE SPRING SET , all models, fitted from engine number CC/CP75000 up to CF/CR1 | 1 |
| | 157229 | Spring , valve | 12 |
| | RFK386 | VALVE SPRING SET , all models, fitted after engine number CF/CR1 | 1 |
| | 157229 | Spring , valve, outer | 12 |
| | 157476 | Spring , valve, inner | 12 |

(Continued on next page.)

PLATE AK

CYLINDER HEAD, VALVES,
AND ROCKER GEAR

TRIUMPH TR6



CYLINDER HEAD, VALVES, AND ROCKER GEAR

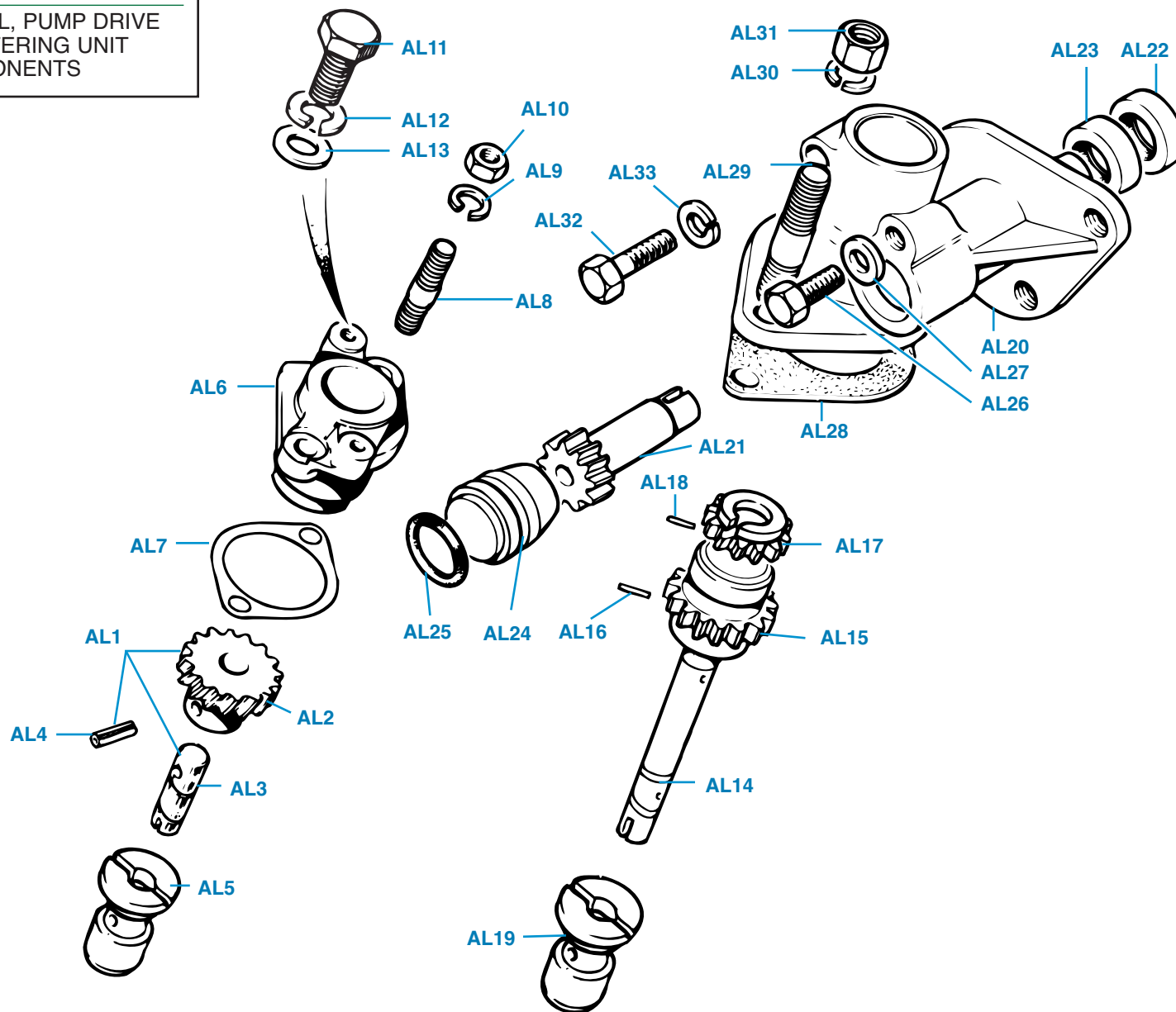
| Plate No. | Part No. | Description | No. Off |
|--|----------|--|---------|
| VALVE SPRING COLLARS | | | |
| LOWER SPRING COLLARS | | | |
| AK15 | 105118 | Collar , lower, carb models, up to engine number CF1 | 12 |
| | 157509 | Collar , lower, carb models, after engine number CF1 | 12 |
| | 149717 | Collar , lower, P.I. models, up to engine number CP75000 | 12 |
| | 105118 | Collar , lower, P.I. models, from engine number CP75000 up to CR1 | 12 |
| | 157509 | Collar , lower, P.I. models after engine no. CR1 | 12 |
| UPPER SPRING COLLARS | | | |
| AK16 | 111870 | Collar , upper, intake valves | 6 |
| AK17 | 128335 | Collar , upper, outer, exhaust valves | 6 |
| AK18 | 128334 | Collar , upper, inner, exhaust valves | 6 |
| AK19 | 106663 | Retainer , valve spring, split cone (per pair) | 12 |
| ROCKER GEAR | | | |
| AK20 | 214559 | Rocker Shaft | 1 |
| AK21 | 137811 | Plug , end, rocker shaft | 2 |
| AK22 | 145867 | Pedestal , rocker, no.1 | 1 |
| AK23 | 145868 | Pedestal , rocker, intermediate | 4 |
| | 144974 | Pedestal , rocker, intermediate; alternative to 145868 | 4 |
| AK24 | 145869 | Pedestal , rocker, no. 6 (drilled) | 1 |
| AK25 | 104859 | Screw , locking rocker shaft to drilled pedestal (no.6) | 1 |
| HARDWARE , securing rocker pedestals to cylinder head | | | |
| AK26 | 132495 | Stud | 6 |
| AK27 | WP184 | Washer , plain | 6 |
| AK28 | HN2009 | Nut | 6 |
| AK29 | 109024 | Rocker , no.1, no.3, no.5, no.7, no.9, no.11 | 6 |
| AK30 | 109023 | Rocker , no.2, no.4, no.6, no.8, no.10, no.12 | 6 |
| AK31 | 109495 | Screw , valve adjustment, all P.I. models | 12 |
| | 57109 | Screw , valve adjustment, carb models, fitted up to engine number CC75000 | 12 |
| | 109495 | Screw , valve adjustment, carb models, fitted after engine number CC75000 | 12 |
| AK32 | 57110 | Nut , locking adjustment screw | 12 |
| AK33 | 105322 | Spring , rocker shaft, outer | 2 |
| AK34 | 119313 | Spring , rocker shaft, intermediate | 5 |
| AK35 | WP8013 | Washer , plain | 4 |
| AK36 | PC10 | Pin , cotter, securing rocker gear to shaft | 2 |
| AK37 | 148916 | Push Rod , all carb models | 12 |
| | 149513 | Push Rod , P.I. models, fitted up to engine number CR5000 (?) | 12 |
| | 148916 | Push Rod , P.I. models, fitted after engine number CR5000 (?) | 12 |
| AK38 | 143552 | Tappet | 12 |

| Plate No. | Part No. | Description | No. Off |
|---|----------|---|---------|
| REBUILT ROCKER ASSEMBLY | | | |
| | TRFCD222 | Rebuilt Rocker Assembly , includes rocker shaft, re-bushed rockers, adjusting screws and nuts, springs and pedestals, fully assembled and ready for installation | 1 |
| ROCKER COVER DETAILS | | | |
| AK39 | 213496 | Rocker Cover Assembly , chromed, carb models, fitted up to engine number CC50000 | 1 |
| | 216756 | Rocker Cover Assembly , painted, carb models, fitted from engine number CC50000 up to CC57332 | 1 |
| | 214816 | Rocker Cover Assembly , painted, carb models, fitted after engine number CC57332 | 1 |
| | 210908 | Rocker Cover Assembly , P.I. models, fitted up to engine number CR1 | 1 |
| | TKC378 | Rocker Cover Assembly , P.I. models, fitted after engine number CR1 | 1 |
| AK40 | 138176 | Oil Filler Cap , all markets except Sweden | 1 |
| | 143393 | Oil Filler Cap , Sweden only | 1 |
| AK41 | 119322 | Gasket , rocker cover, carb models, fitted up to engine number CF12500 | 1 |
| | 153691 | Gasket , rocker cover, P.I. models, fitted up to engine number CR5000 | 1 |
| | GEG413 | Gasket , rocker cover, all models, fitted after engine number CF12500/CR5000 | 1 |
| HARDWARE , securing rocker cover to cylinder head | | | |
| AK42 | 105123 | Stud | 3 |
| AK43 | HN2008 | Nut , locking stud to cylinder head | 3 |
| AK44 | WF508 | Washer , fibre, to prevent oil leaks (Putting a little gasket sealer on both sides of washer is effective.) | 3 |
| AK45 | WP8 | Washer , plain | 3 |
| AK46 | TN3208 | Nut , nyloc (Don't overtighten, crushing rocker cover.) | 3 |
| HARDWARE , securing manifolds to cylinder head (Remainder of fittings are listed in Section BY.) | | | |
| AK47 | DS3113 | Dowel , (Some models may require only 2 off.) | 3 |
| AK48 | 105124 | Stud | 4 |
| AK49 | 105125 | Stud | 6 |
| AK50 | 101962 | Stud , all P.I. models | 3 |
| | 101962 | Stud , carb models after engine number CC75000 | 3 |
| HEATER DETAILS | | | |
| AK51 | 148435 | Adaptor , heater water valve | 1 |
| AK52 | 114774 | Plug , required in place of adaptor when heater is not fitted | 1 |
| HARDWARE , securing cylinder head to engine block (Studs are listed in Section AH.) | | | |
| AK53 | 508289 | Washer , plain | 14 |
| AK54 | 103810 | Nut | 14 |

PLATE AL

DISTRIBUTOR DRIVE, OIL, PUMP DRIVE
AND P.I. FUEL METERING UNIT
DRIVE COMPONENTS

TRIUMPH TR6



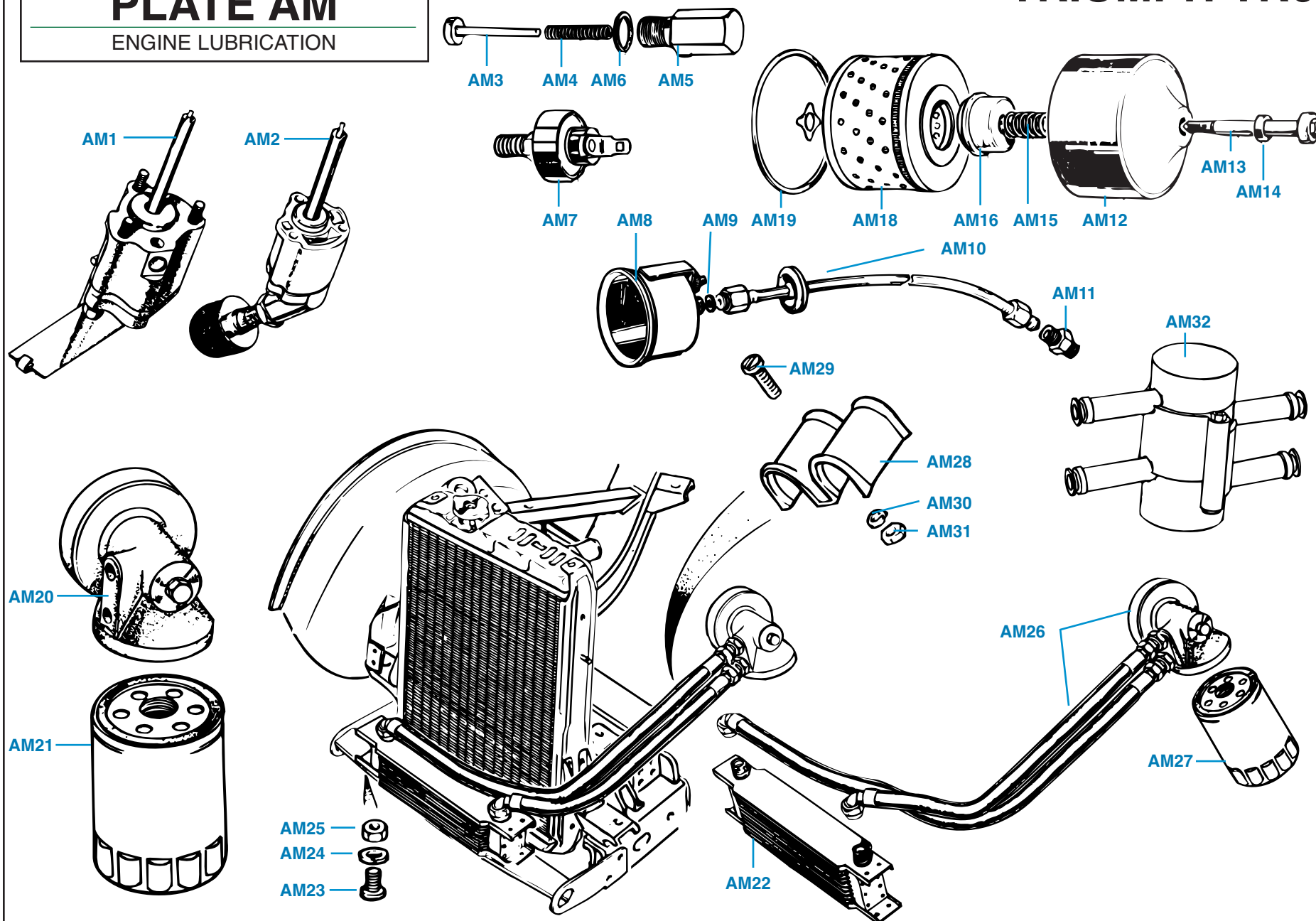
DISTRIBUTOR DRIVE, OIL PUMP DRIVE, AND P.I. FUEL METERING UNIT DRIVE COMPONENTS

| Plate No. | Part No. | Description | No. Off | Plate No. | Part No. | Description | No. Off |
|---------------------------|----------|---|---------|-----------|----------|-------------|---------|
| CARBURETTOR MODELS | | | | | | | |
| AL1 | 126786 | DRIVE SHAFT ASSEMBLY , distributor and oil pump | 1 | | | | |
| AL2 | 126785 | Gear , driving | 1 | | | | |
| AL3 | | Shaft | NSS | | | | |
| AL4 | 500974 | Pin , Mills | 1 | | | | |
| AL5 | 149776 | Bush , drive shaft, pressed into engine block | 1 | | | | |
| AL6 | 126784 | Pedestal , distributor | 1 | | | | |
| AL7 | 104939 | Gasket , shim, adjusting end float | A/R | | | | |
| | | HARDWARE , securing distributor pedestal to engine block | | | | | |
| AL8 | 101962 | Stud | 2 | | | | |
| AL9 | WL208 | Washer , lock | 2 | | | | |
| AL10 | HN2008 | Nut | 2 | | | | |
| | | HARDWARE , securing distributor to distributor pedestal | | | | | |
| AL11 | HU704 | Screw , set | 2 | | | | |
| AL12 | WL207 | Washer , lock | 2 | | | | |
| AL13 | WP35 | Washer , plain | 2 | | | | |
| P.I. MODELS | | | | | | | |
| | 149099 | DRIVE SHAFT ASSEMBLY , distributor, oil pump, and fuel metering pump | 1 | | | | |
| AL14 | 149097 | Shaft | 1 | | | | |
| AL15 | 126785 | Gear , driving, distributor and oil pump | 1 | | | | |
| AL16 | 500974 | Pin , Mills, securing gear | 1 | | | | |
| AL17 | 149098 | Gear , driving, metering pump | 1 | | | | |
| AL18 | 500975 | Pin , Mills, securing gear | 1 | | | | |
| AL19 | 149776 | Bush , drive shaft, pressed into engine block | 1 | | | | |
| AL20 | 308396 | Pedestal Assembly , distributor and fuel metering pump | 1 | | | | |
| AL21 | 149100 | Gear , driven, fuel metering unit | 1 | | | | |
| AL22 | 145720 | Seal , fuel | 1 | | | | |
| AL23 | 145720 | Seal , oil | 1 | | | | |
| AL24 | 149226 | Plug , end, pedestal | 1 | | | | |
| AL25 | 145724 | "O" Ring , mounted on plug | 1 | | | | |
| | | HARDWARE , securing end plug to pedestal | | | | | |
| AL26 | WU3704 | Screw | 1 | | | | |
| | 157092 | Screw ; alternative to WU3704 | 1 | | | | |
| AL27 | WP7 | Washer , plain | 1 | | | | |
| AL28 | 104939 | Gasket , shim, between pedestal and engine block; used to adjust end float | A/R | | | | |
| | | HARDWARE , securing pedestal to engine block | | | | | |
| AL29 | 101962 | Stud | 2 | | | | |
| AL30 | WL208 | Washer , lock | 2 | | | | |
| AL31 | HN2008 | Nut | 2 | | | | |
| | | HARDWARE , securing distributor to pedestal | | | | | |
| AL32 | HU805 | Screw , set | 1 | | | | |
| AL33 | WL208 | Washer , lock | 1 | | | | |

PLATE AM

ENGINE LUBRICATION

TRIUMPH TR6



ENGINE LUBRICATION

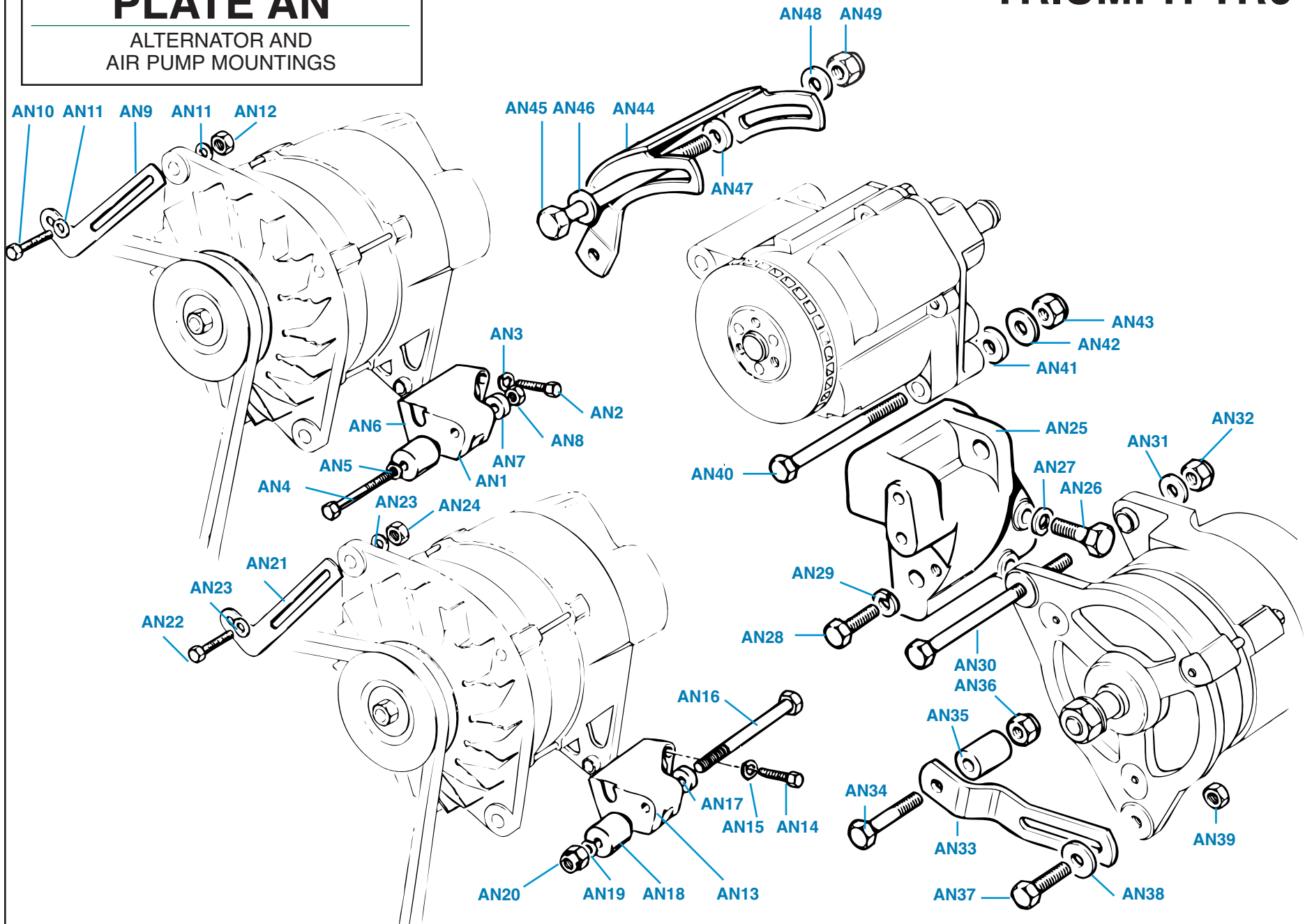
| Plate No. | Part No. | Description | No. Off |
|-----------|----------|---|---------|
| | | OIL PUMPS | |
| | | Please Note: Neither of the pumps listed below is the one with the cast iron pickup cited by Kastner as being unsuitable for racing. | |
| AM1 | 149634 | OIL PUMP ASSEMBLY , carb models up to eng. no. CC66296 and P.I. models up to CP53748 | 1 |
| | 127732 | Body , oil pump | 1 |
| | 104963 | Plug , core, oil pump body | 1 |
| | 508975 | Rotor and Shaft Assembly | 1 |
| | 214842 | Cover , oil pump body | 1 |
| | 149621 | Filter , oil pump | 1 |
| | | HARDWARE , securing oil pump to engine block | |
| | HB724 | Bolt | 2 |
| | HB727 | Bolt | 1 |
| | WL207 | Washer , lock | 1 |
| AM2 | 217488 | OIL PUMP ASSEMBLY , carb models after eng. no. CC66296 and P.I. models after CP53748 | 1 |
| | 217486 | Body , oil pump | 1 |
| | 519569 | Rotor and Shaft Assembly | 1 |
| | 217487 | Cover , oil pump body | 1 |
| | 155370 | Filter and Suction Pipe Assembly | 1 |
| | 155371 | Nut , locking suction pipe to oil pump body | 1 |
| | | HARDWARE , securing oil pump to engine block | |
| | HB726 | Bolt | 3 |
| | WL207 | Washer , lock | 3 |
| | | OIL PRESSURE RELIEF DETAILS | |
| | RFK778 | Oil Pressure Relief Valve Kit ; includes body, piston stock grade spring, and seal | 1 |
| AM3 | 132107 | Piston , oil pressure relief valve | 1 |
| AM4 | 131535 | Spring , oil pressure relief valve | 1 |
| AM5 | 107246 | Plug (Body) , oil pressure relief valve | 1 |
| AM6 | 501258 | Seal , plug to engine block | 1 |
| | | OIL PRESSURE FAILURE SENDING SWITCH | |
| AM7 | 121398 | Sending Unit , one plug, all P.I. models | 1 |
| | 121398 | Sending Unit , one plug, carb models, fitted up to eng. no. CF1 | 1 |
| | 159784 | Sending Unit , three plugs, carb models, fitted after eng. no. CF1 | 1 |
| | | OIL PRESSURE GAUGE DETAILS | |
| AM8 | 147960 | Gauge , oil pressure, fitted up to comm. no. CF/CR1 | 1 |
| | 159608 | Gauge , oil pressure, fitted after comm. no. CF/CR1 | 1 |
| AM9 | 54902 | Washer , leather, sealing connection between gauge and oil pipe | 1 |
| AM10 | 149867 | Pipe , between oil pressure gauge and engine block, carb models only | 1 |
| | 138308 | Pipe , between oil pressure gauge and engine block, | 1 |

| Plate No. | Part No. | Description | No. Off |
|-----------|----------|---|---------|
| | | P.I. models only | |
| AM11 | 143943 | Adaptor , pipe to engine block, carb models only | 1 |
| | | OIL FILTER DETAILS | |
| | 129917 | OIL FILTER ASSEMBLY (Full Flow) | |
| | | SHELL ASSEMBLY | |
| AM12 | 510107 | Bolt , center | 1 |
| AM13 | 510108 | Washer , rubber, sealing bolt head | 1 |
| AM14 | 510109 | Spring , retaining element | 1 |
| AM15 | 510110 | Valve Assembly | 1 |
| AM16 | 510111 | Centralizer , filter element | 1 |
| AM17 | 509883 | ELEMENT , oil filter | 1 |
| AM18 | GFE131 | Ring , rubber, sealing | 1 |
| AM19 | 125531 | SPIN-ON OIL FILTER ADAPTORS | |
| AM20 | TRFEL403 | Adaptor , spin-on oil filter | 1 |
| AM21 | TRFEL601 | Oil Filter Assembly , spin-on | 1 |
| | | OIL COOLER COMPONENTS | |
| AM22 | TRFEL101 | Radiator Assembly , oil cooler, thirteen rows | 1 |
| | | HARDWARE , securing oil cooler radiator to radiator protection shield | |
| | | Screw , set | 4 |
| AM23 | HU705 | Washer , lock | 4 |
| AM24 | WL207 | Nut | 4 |
| AM25 | HN2007 | Note: TR6 radiator shields are pre-drilled for oil cooler installation. | |
| AM26 | TRFEL202 | Fitting Kit , oil cooler (Spin-on adaptor and rubber hoses.) | 1 |
| | TRFEL207 | Fitting Kit , oil cooler (Spin-on adaptor and braided metal hoses.) | 1 |
| AM27 | TRFEL601 | Oil Filter Assembly , spin-on | 1 |
| | | HARDWARE AND FITTINGS , securing hoses to L.H. front engine mounting bracket and to L.H. radiator support stay | |
| | | "W" Clip | 2 |
| AM28 | 148513 | Screw , set | 2 |
| AM29 | PT505 | Washer , lock | 2 |
| AM30 | WL205 | Nut | 2 |
| AM31 | HN2005 | Thermostatic Switch , for use in cold conditions to allow the oil to warm up to normal operating temperatures | 1 |
| AM32 | TRFEL301 | | |

PLATE AN

ALTERNATOR AND
AIR PUMP MOUNTINGS

TRIUMPH TR6



ALTERNATOR AND AIR PUMP MOUNTINGS

| Plate No. | Part No. | Description | No. Off |
|--|----------|---|---------|
| ALTERNATOR MOUNTINGS , all models up to comm. no. CF12500/CR5000 | | | |
| Please Note: Alternators are listed in Sections DV through DY. | | | |
| AN1 | 147899 | Bracket , alternator mounting | 1 |
| AN2 | HU808 | HARDWARE , securing mounting to engine block | 2 |
| AN3 | WL208 | Screw , set | 2 |
| | | Washer , lock | 2 |
| AN4 | HB839 | HARDWARE , securing alternator to mounting bracket | 1 |
| AN5 | WP139 | Bolt | 1 |
| AN6 | 147472 | Washer , plain | 1 |
| AN7 | 147902 | Spacer , front | 1 |
| AN8 | 143802 | Packing , rear | 1 |
| AN9 | 147952 | Nut , "Cleveloc" | 1 |
| | | Link , adjusting | 1 |
| | | HARDWARE , securing alternator to adjusting link | 1 |
| AN10 | HU857 | Screw , set | 2 |
| AN11 | WP17 | Washer , plain | 2 |
| AN12 | JN2158 | Nut , jam | 1 |
| ALTERNATOR MOUNTINGS , all models except U.S.A. after comm. no. CR5000 and U.S.A. models from comm. no. CF12500 up to CF35000 | | | |
| Please Note: Alternators are listed in Sections DV through DY. | | | |
| AN13 | 147899 | Bracket , alternator mounting | 1 |
| AN14 | HU808 | HARDWARE , securing mounting to engine block | 2 |
| AN15 | WL208 | Screw , set | 2 |
| | | Washer , lock | 2 |
| AN16 | HB839 | HARDWARE , securing alternator to mounting bracket | 1 |
| AN17 | 147902 | Bolt | 1 |
| AN18 | 147472 | Packing , rear | 1 |
| AN19 | WP139 | Spacer , front | 1 |
| AN20 | 143802 | Washer , plain | 1 |
| AN21 | UKC646 | Nut , "Cleveloc" | 1 |
| | | Link , adjusting | 1 |
| | | HARDWARE , securing alternator to adjusting link | 1 |
| AN22 | HU857 | Screw , set | 1 |
| AN23 | WP17 | Washer , plain | 2 |
| AN24 | JN2158 | Nut , jam | 1 |

| Plate No. | Part No. | Description | No. Off |
|---|----------|--|---------|
| ALTERNATOR AND AIR PUMP MOUNTINGS , U.S.A. models after comm. no. CF35000 | | | |
| Please Note: Alternators are listed in Sections DV through DY, and Air Pumps are listed in Section BJ. | | | |
| AN25 | TKC2071 | Bracket , mounting, alternator and air pump | 1 |
| AN26 | HB814 | HARDWARE , securing bracket to engine block | 2 |
| AN27 | WL208 | Bolt | 2 |
| | | Washer , lock | 2 |
| AN28 | HU806 | HARDWARE , securing bracket to front engine plate | 2 |
| AN29 | WL208 | Screw , set | 2 |
| | | Washer , lock | 2 |
| AN30 | HB838 | HARDWARE , securing alternator to mounting bracket | 1 |
| AN31 | WP139 | Bolt , pivot | 1 |
| AN32 | 143802 | Washer , plain | 1 |
| AN33 | UKC5316 | Nut , "Cleveloc" | 1 |
| | | Link , adjusting, alternator | 1 |
| | | HARDWARE , securing alternator adjusting link to front engine plate | 1 |
| AN34 | HB814 | Bolt | 1 |
| AN35 | UKC5317 | Spacer | 1 |
| AN36 | 143802 | Nut , "Cleveloc" | 1 |
| | | HARDWARE , securing alternator to alternator adjusting link | 1 |
| AN37 | HU857 | Screw , set | 2 |
| AN38 | WP17 | Washer , plain | 2 |
| AN39 | JN2158 | Nut , jam | 1 |
| AN40 | HB830 | HARDWARE , securing air pump to mounting bracket | 1 |
| AN41 | WM72 | Bolt , pivot | 1 |
| AN42 | WP8 | Washer , plain | 1 |
| AN43 | 143802 | Washer , plain | 1 |
| AN44 | UKC5312 | Nut , "Cleveloc" | 1 |
| | | Link Assembly , air pump adjustment | 1 |
| | | HARDWARE , securing air pump to adjusting link | 1 |
| AN45 | HB838 | Bolt | 1 |
| AN46 | WP8 | Washer , plain | 1 |
| AN47 | UKC6140 | Spacer | 1 |
| AN48 | WP8 | Washer , plain | 1 |
| AN49 | 143802 | Nut , "Cleveloc" | 1 |