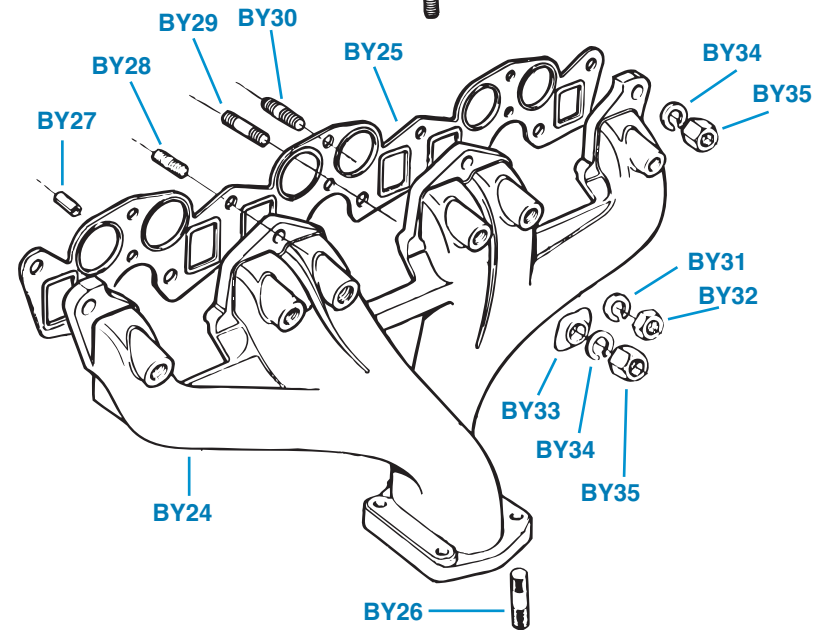
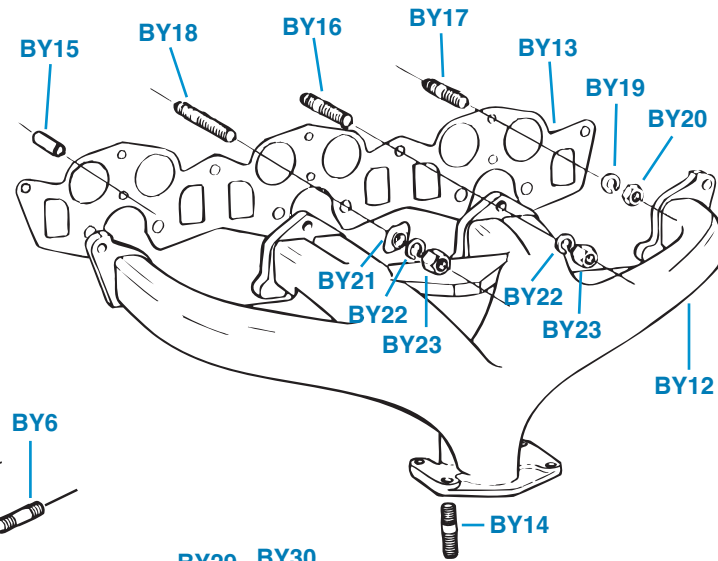
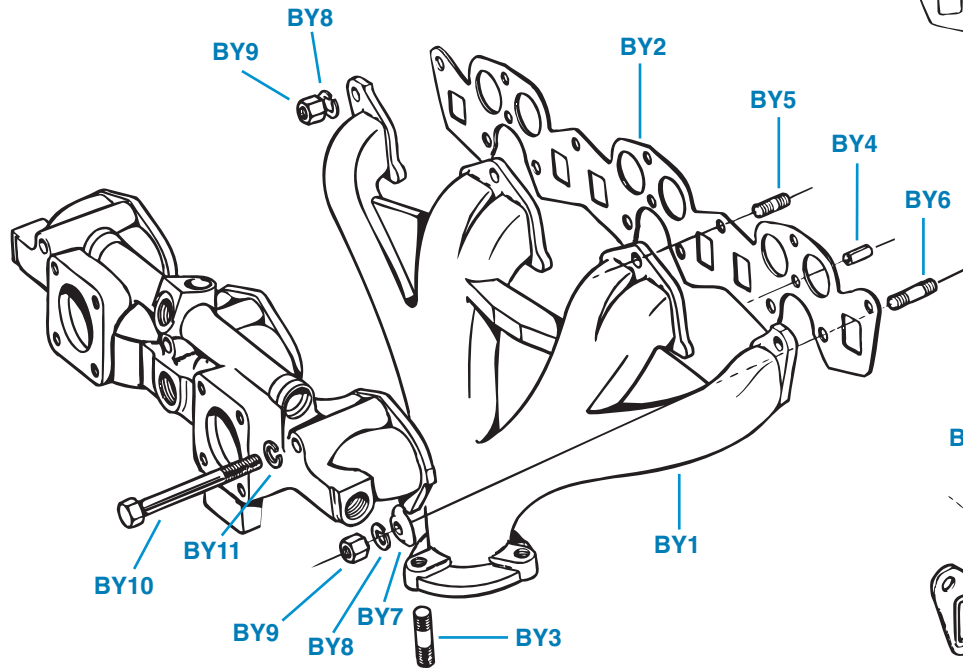


PLATE BY

EXHAUST MANIFOLDS

TRIUMPH TR6



EXHAUST MANIFOLDS

Plate No.	Part No.	Description	No. Off	Plate No.	Part No.	Description	No. Off
		EXHAUST MANIFOLD DETAILS , carb models, up to engine no. CC75000				EXHAUST MANIFOLD DETAILS , carb models after engine no. CF35000	
BY1	308290	Manifold , exhaust, fitted along with single-pipe exhaust system	1	BY24	RKC1729	Manifold , exhaust, drilled and tapped for air injection tubes and air manifold attachments; fitted along with double-pipe exhaust system	1
BY2	213641	Gasket , manifold	1	BY25	GEG682	Gasket , manifold	1
	218238	Gasket , manifold; alternative to 213641	1	BY26	115696	Stud , exhaust pipe attachment	4
BY3	115696	Stud , exhaust pipe attachment, fitted up to engine no. CC30041	3			HARDWARE AND FITTINGS , securing manifolds to cylinder head	
	56561	Stud , exhaust pipe attachment, fitted after engine no. CC30041	3	BY27	DS3113	Dowel , intake manifold attachment	3
		HARDWARE AND FITTINGS , securing manifolds to cylinder head		BY28	105124	Stud , exhaust manifold, outer	4
BY4	DS3113	Dowel , intake manifold attachment	2	BY29	105125	Stud , intake manifold attachment	6
BY5	105124	Stud , exhaust manifold, outer	4	BY30	111456	Stud , intake manifold attachment	3
BY6	105125	Stud , intake manifold attachment	6	BY31	WL208	Washer , lock	3
BY7	58258	Clamp , manifold	6	BY32	HN2008	Nut	3
BY8	WL209	Washer , lock	10	BY33	58258	Clamp , manifold	6
BY9	100498	Nut	10	BY34	WL209	Washer , lock	10
BY10	HB828	Bolt	3	BY35	100498	Nut	10
BY11	WL208	Washer , lock	3				
		EXHAUST MANIFOLD DETAILS , carb models from engine no. CC75000 up to CF35000; all P.I. models					
BY12	308292	Manifold , exhaust, fitted along with double pipe exhaust system	1				
BY13	214622	Gasket , manifold, P.I. models, up to engine no. CP53891	1				
	217948	Gasket , manifold, P.I. models, from engine no. CP53892 up to CP75000	1				
	GEG682	Gasket , manifold, fitted to all models after engine no. CC/CP75000	1				
BY14	115696	Stud , exhaust pipe attachment	4				
		HARDWARE AND FITTINGS , securing manifolds to cylinder head					
BY15	DS3113	Dowel , intake manifold attachment, carb models	2				
	DS3113	Dowel , intake manifold attachment, P.I. models	3				
BY16	105124	Stud , exhaust manifold, outer	4				
BY17	105125	Stud , intake manifold attachment	6				
BY18	101962	Stud , intake manifold attachment, fitted up to engine CF12500/CR5000	3				
	111456	Stud , intake manifold attachment, fitted after engine no. CF12500/CR5000	3				
BY19	WL208	Washer , lock	3				
BY20	HN2008	Nut	3				
BY21	58258	Clamp , manifold	6				
BY22	WL209	Washer , lock	10				
	WP36	Washer , plain, alternative to WL209	10				
BY23	100498	Nut	10				

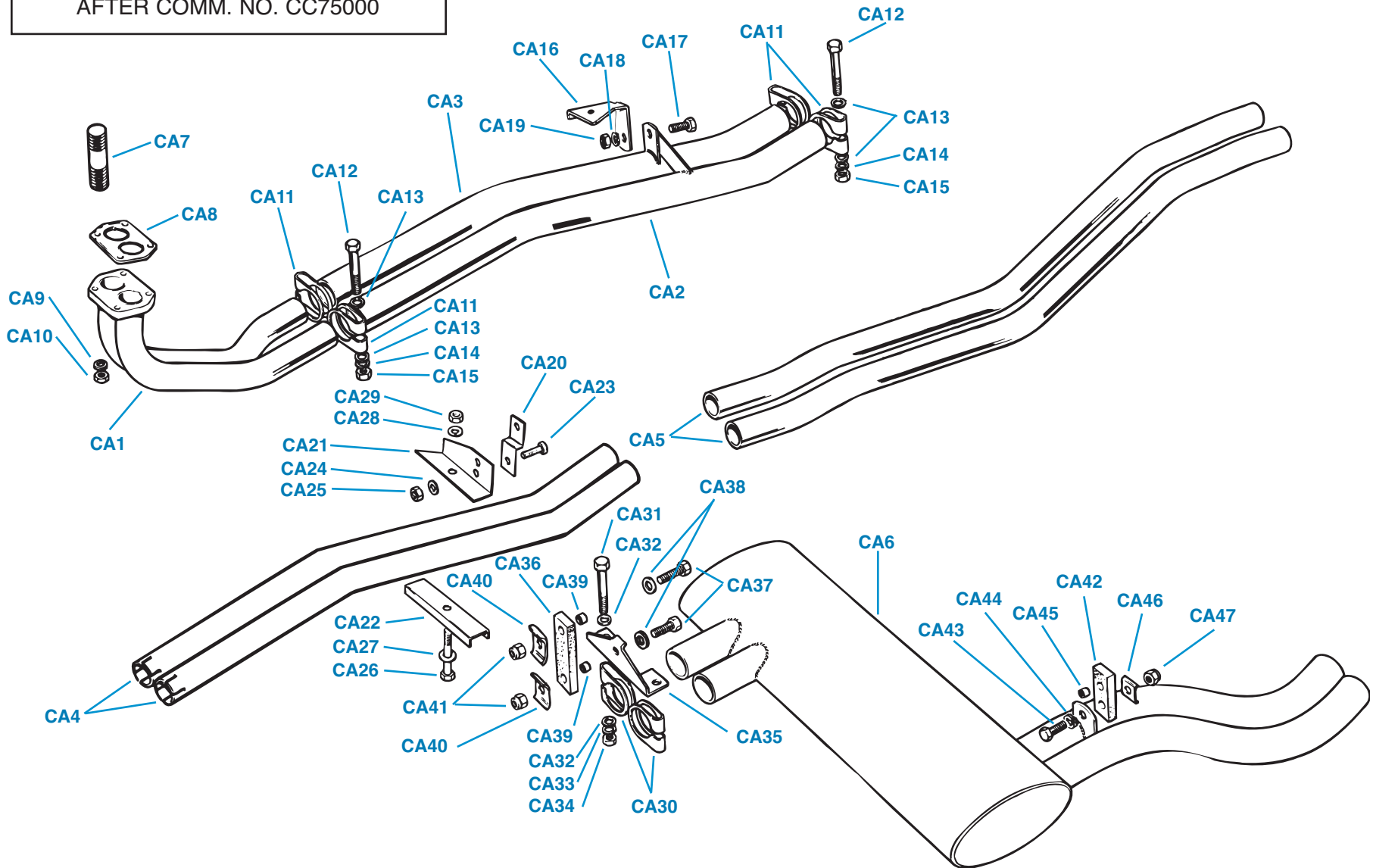
SINGLE-PIPE EXHAUST SYSTEM—CARB MODELS, 1069 UP TO 1971

Plate No.	Part No.	Description	No. Off	Plate No.	Part No.	Description	No. Off
BZ1	308202	Front Exhaust Pipe Assembly	1				
BZ2	106958	Gasket , between pipe flange and manifold	1				
		HARDWARE , securing front pipe to exhaust manifold flange					
BZ3	115696	Stud , screwed into manifold flange, fitted up to engine no. CC30041	3				
	56561	Stud , screwed into manifold flange, fitted from engine no. CC30042 up to CC75000	3				
BZ4	WL209	Washer , lock	3				
BZ5	108951	Nut , brass	3				
BZ6	213214	Intermediate Exhaust Pipe	1				
BZ7	308724	Rear Muffler and Tail Pipe Assembly	1				
	GEC66	HANGER AND CLIP KIT , intermediate	1				
BZ8	149450	Bracket Assembly , bolted to gearbox mounting	1				
BZ9	130890	Clip , around pipes	1				
		HARDWARE , securing clip to bracket					
BZ10	HB809	Bolt	1				
BZ11	HN2008	Nut	1				
BZ12	WL208	Washer , lock	1				
	GEC67	HANGER AND CLIP KIT , rear muffler, R.H.	1				
BZ13	108446	Clip , intermediate pipe to muffler	1				
		HARDWARE , securing clip to muffler and intermediate pipe					
BZ14	HB823	Bolt	1				
BZ15	WP129	Washer , plain	2				
BZ16	HN2008	Nut	1				
BZ17	WP107	Washer , plain	1				
BZ18	WL208	Washer ,lock	1				
BZ19	105578	Bracket , attaching pipe clip to rubber mounting strip	1				
BZ20	GEX7360	Mounting Strip , rubber	1				
		HARDWARE , securing bracket to mounting strip and mounting strip to chassis					
BZ21	HU808	Screw , set	2				
	155249	Sleeve , distance, on set screws	2				
BZ22	WP8	Washer , plain	2				
BZ23	TN3208	Nut , nyloc	2				
BZ24	105290	Plate , clamp	2				
	GEC65	HANGER KIT , rear muffler, L.H.	1				
BZ25	GEX7359	Mounting Strip , rubber	1				
		HARDWARE , securing mounting strip to muffler and to chassis					
BZ26	HU808	Screw , set	2				
	155249	Sleeve , distance, on set screws	2				
BZ27	YN2908	Nut , nyloc	2				
BZ28	105290	Plate , clamp	2				

PLATE CA

DOUBLE PIPE EXHAUST SYSTEM,
ALL P.I. MODELS AND CARB MODELS
AFTER COMM. NO. CC75000

TRIUMPH TR6



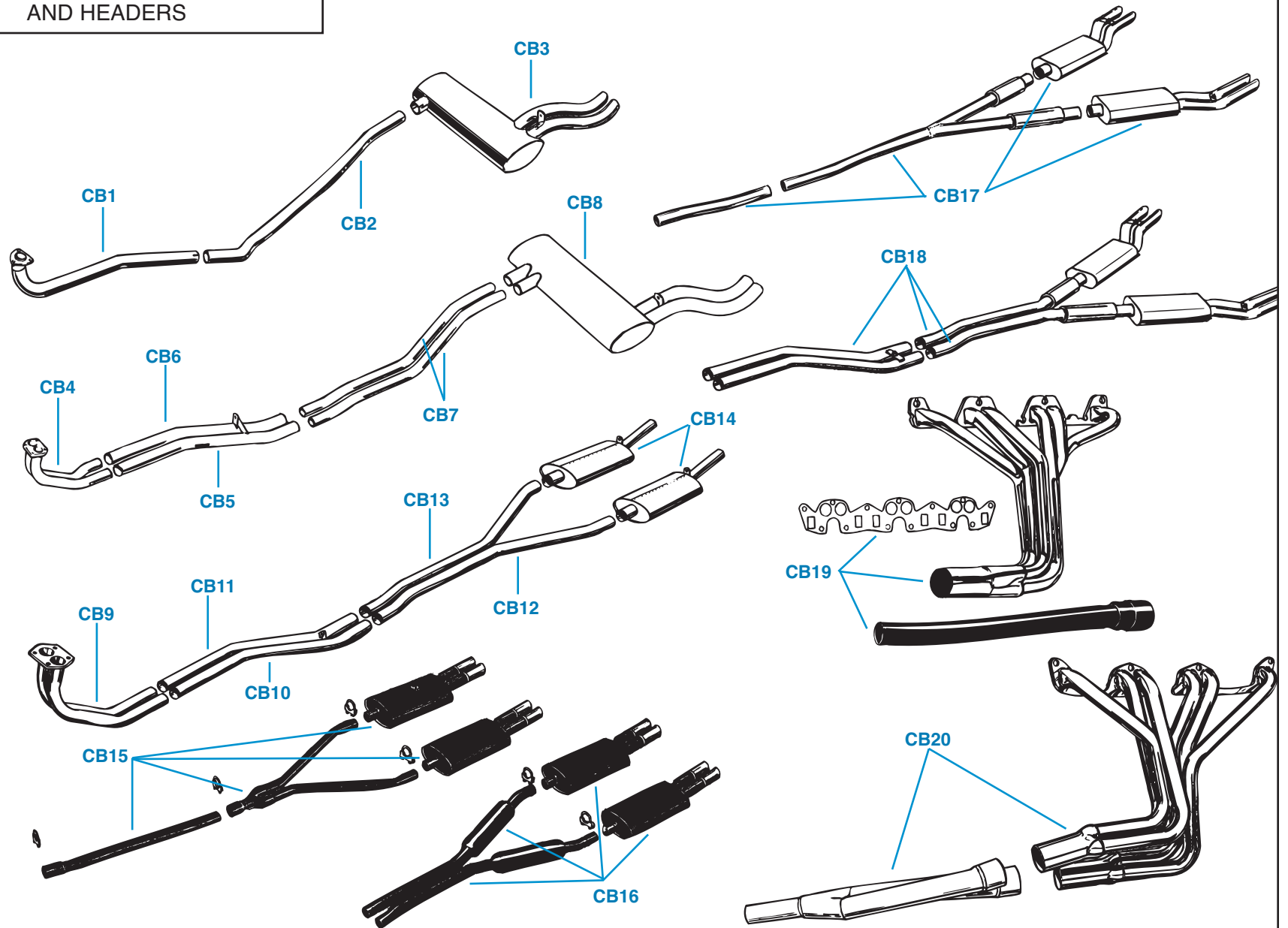
DOUBLE-PIPE EXHAUST SYSTEM, ALL P.I., & CARB AFTER CC75000

Plate No.	Part No.	Description	No. Off	Plate No.	Part No.	Description	No. Off
EXHAUST PIPES AND MUFFLER							
CA1	GEX1255	Front Exhaust Pipes and Manifold Flange Assembly	1	GEC63	BRACKET ASSEMBLY , hanging front intermediate pipes	1	
CA2	GEX1270	Pipe Assembly , front intermediate, L.H., with welded-on hanger bracket, fitted up to comm. nos. CF1/CR1	1		from rear engine mount (cars without overdrive) or from stud on overdrive casing (cars with overdrive), for use with front intermediate pipes without welded-on hanger brackets, fitted after comm. no. CF1/CR1		
CA3	GEX1269	Pipe Assembly , front intermediate, R.H., with welded-on hanger bracket, fitted up to comm. no. CF1/CR1	1	CA20	UKC878	Strap	1
CA4	GEX1612	Pipe , front intermediate, without welded-on hanger bracket, fitted after commission no. CF1/CR1	2	CA21	UKSC879	Bracket , angle	1
CA5	GEX1271	Pipe , rear intermediate	2	CA22	UKC880	Channel	1
CA6	GEX3391	Rear Muffler Assembly	1	CA23	HU806	HARDWARE , securing strap to angle bracket	
HARDWARE, GASKETS, AND EXHAUST HANGER DETAILS				CA24	WL208	Screw , set	1
HARDWARE AND FITTINGS , securing front pipes assembly to exhaust manifold				CA25	HN2008	Washer , lock	1
CA7	115696	Stud , all P.I. models; carb models up to engine no. CC30041	4	CA26	HB820	Nut	1
	56561	Stud , carb models, from engine no. CC30031 up to CC75000	4	CA27	WP8	HARDWARE , securing channel and pipes to angle bracket	
	115696	Stud , carb models, after engine no. CC75000	4	CA28	WL208	Bolt	1
CA8	GEG724	Gasket , between manifold flange and exhaust pipes flange	1	CA29	HN2008	Washer , plain	1
CA9	108951	Nut , brass	4	CA29	HN2008	Washer , lock	1
CA10	WL209	Washer , lock	4	GEC64	HANGER AND CLIP ASSEMBLY , rear muffler, R.H	1	
	GEC61	CLIP ASSEMBLY , securing front pipes assembly to front intermediate pipes and front intermediate pipes to rear intermediate pipes	4	CA30	GEX7506	CLIP DETAILS	
CA11	GEX7506	Clip , exhaust pipe	4	CA31	HB823	Clip , exhaust pipe	2
CA12	HB822	Bolt	4	CA32	WP107	Bolt	2
CA13	WP107	Washer , plain	8	CA33	WL208	Washer , plain	4
CA14	WL208	Washer , lock	4	CA34	HN2008	Washer , lock	2
CA15	HN2008	Nut	4	CA35	148871	Nut	1
	GEC62	BRACKET ASSEMBLY , hanging front intermediate pipes from gearbox mounting, for use with front intermediate pipes with welded-on hanger brackets, fitted up to comm. no. CF1/CR1	1	CA36	GEX7360	HANGER DETAILS	
CA16	148875	Bracket Assembly	1	CA37	HU808	Bracket	1
		HARDWARE , securing bracket assembly to front intermediate exhaust pipes		CA38	WP8	Hanger , rubber	1
CA17	HU806	Screw , set	1	CA39	155249	HARDWARE , securing rubber hanger to bracket and to chassis frame	
CA18	WL208	Washer , lock	1	CA40	GEX7510	Screw , set	2
CA19	HN2008	Nut	1	CA41	TN3208	Washer , plain, under head of screw	2
		HARDWARE , for securing bracket to gearbox mounting, is listed in Section AG.		CA42	GEC65	Sleeve , distance	2
				CA43	GEX7359	Plate , clamp	2
				CA44	HU808	Nut , nyloc	2
				CA45	WP8	HANGER ASSEMBLY , rear muffler, L.H.	1
				CA46	155249	Hanger , rubber	1
				CA47	GEX7510	HARDWARE , securing rubber hanger to brackets welded to muffler and to chassis frame	
				CA48	TN3208	Screw , set	2
				CA49	WP8	Washer , lock	2
				CA50	155249	Sleeve , distance	2
				CA51	GEX7510	Plate , clamp	2
				CA52	TN3208	Nut , nyloc	2

PLATE CB

AFTERMARKET EXHAUST SYSTEMS
AND HEADERS

TRIUMPH TR6



AFTERMARKET EXHAUST SYSTEMS AND HEADERS

Plate No.	Part No.	Description	No. Off
		STAINLESS STEEL EXHAUST SYSTEMS , original configurations, utilizing all original gaskets, hangers, and clamps, as listed in Sections BZ and CA.	
	RFK109	SINGLE PIPE EXHAUST SYSTEM , stainless steel, fitted to carb models up to comm. no. CC75000 approx.	1
CB1	FSTH40	Front Pipe Assembly	1
CB2	FSTH55	Connecting Pipe	1
CB3	FSTH105	Rear Muffler Assembly	1
	RFK110	DOUBLE PIPE EXHAUST SYSTEM , stainless steel, fitted to P.I. models up to comm. no. CR5000 and to carb models from comm. no. CC75000 up to CF12500	1
CB4	FSTH47	Front Pipe Assembly	1
CB5	FSTH77	Front Connecting Pipe , L.H.	1
CB6	FSTH76	Front Connecting Pipe , R.H.	1
CB7	FSTH74	Rear Connecting Pipe	2
CB8	FSTH102	Rear Muffler Assembly	1
	RFK259	DOUBLE PIPE EXHAUST SYSTEM , stainless steel, fitted to all models after comm. no. CF12500/CR5000	1
	FSTH47	Front Pipe Assembly	1
	FSTH170	Front Connecting Pipe	2
	FSTH74	Rear Connecting Pipe	2
	FSTH102	Rear Muffler Assembly	1
		STAINLESS STEEL FREE-FLOW "SPORT" EXHAUST SYSTEMS	
		Please Note: Although front pipes are identical to stock configurations, rear connecting pipes and rear mufflers are not, and it will be necessary to improvise rear hangers	
	RFK111	STAINLESS STEEL FREE-FLOW "SPORT" EXHAUST SYSTEM , fitted to P.I. models, and carb models after CC75000	1
CB9	FSTH47	Front Pipe Assembly	1
CB10	FSTH77S	Front Connecting Pipe , L.H.	1
CB11	FSTH76S	Front Connecting Pipe , R.H.	1
CB12	FSTH71	Rear Connecting Pipe , L.H.	1
CB13	FSTH72	Rear Connecting Pipe , R.H.	1
CB14	FSTH73	Rear Muffler Assembly	2
		MONZA BRAND FREE-FLOW EXHAUST SYSTEMS	
		Please Note: Monza brand systems require the use of the stock front pipe for single-pipe systems and the stock front pipe and front connecting pipes for the double-pipe system; all non-stock clamps and hangers are included.	
CB15	MONZA881283	Monza Brand Free-Flow Exhaust System , single-pipe, fitted to carb models up to comm. no. CC75000	1
CB16	MONZA881287	Monza Brand Free-Flow Exhaust System , double-pipe, fitted to all P.I. models and to carb models after comm. no. CC75000	1

Plate No.	Part No.	Description	No. Off
		STEBRO BRAND FREE-FLOW EXHAUST SYSTEMS	
		Please Note: Stebro exhausts are made of beautiful, gleaming stainless steel, and they are worth every penny of their rather high price. Like Monza systems, they also require the use of a stock or stainless steel front pipe in the case of the single-pipe system and the front pipe and front connecting pipes in the case of the double-pipe system. All non-stock clamps and hangers are included.	
CB17	RFK143	Stebro Brand Free-Flow Exhaust System , single-pipe, all stainless steel construction, fitted to carb models up to comm. no. CC75000	1
CB18	RFK144	Stebro Brand Free-Flow Exhaust System , double-pipe, all stainless steel construction, fitted to all P.I. models and to carb models after comm. no. CC75000	1
		MONZA "QUICK-TRIP" BRAND EXHAUST HEADERS	
		Please Note: Installing a header requires a certain amount of "fitting," as in filing, grinding, and bending. If you aren't up to the "fitting" process, and you don't have someone to do it for you, then you are probably better off with the stock manifold.	
CB19	MONZA701083	Monza "Quick-Trip" Header , single-pipe exhaust systems	1
	MONZA701085	Monza "Quick-Trip" Header , double-pipe exhaust system	1
		FACTORY STYLE COMPETITION HEADERS	
CB20	TRFCD4	Factory Style Header , single-pipe exhaust system	1
	TRFCD12	Factory Style Header , double-pipe exhaust systems	1
	RFK616	Stainless Steel Header , single pipe exhaust system	1
	RFK617	Stainless Steel Header , double-pipe exhaust system	1