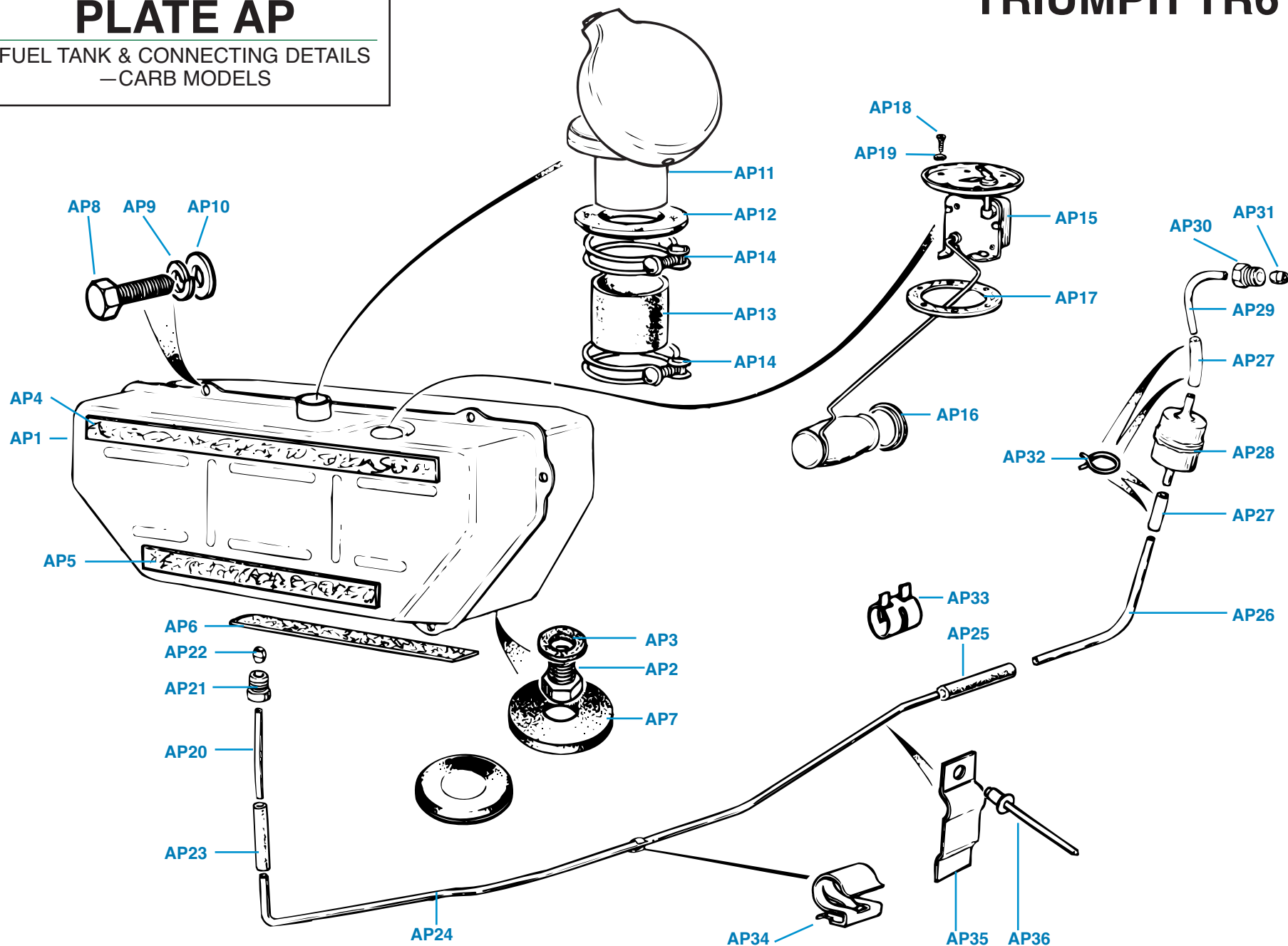


PLATE AP

FUEL TANK & CONNECTING DETAILS
—CARB MODELS

TRIUMPH TR6



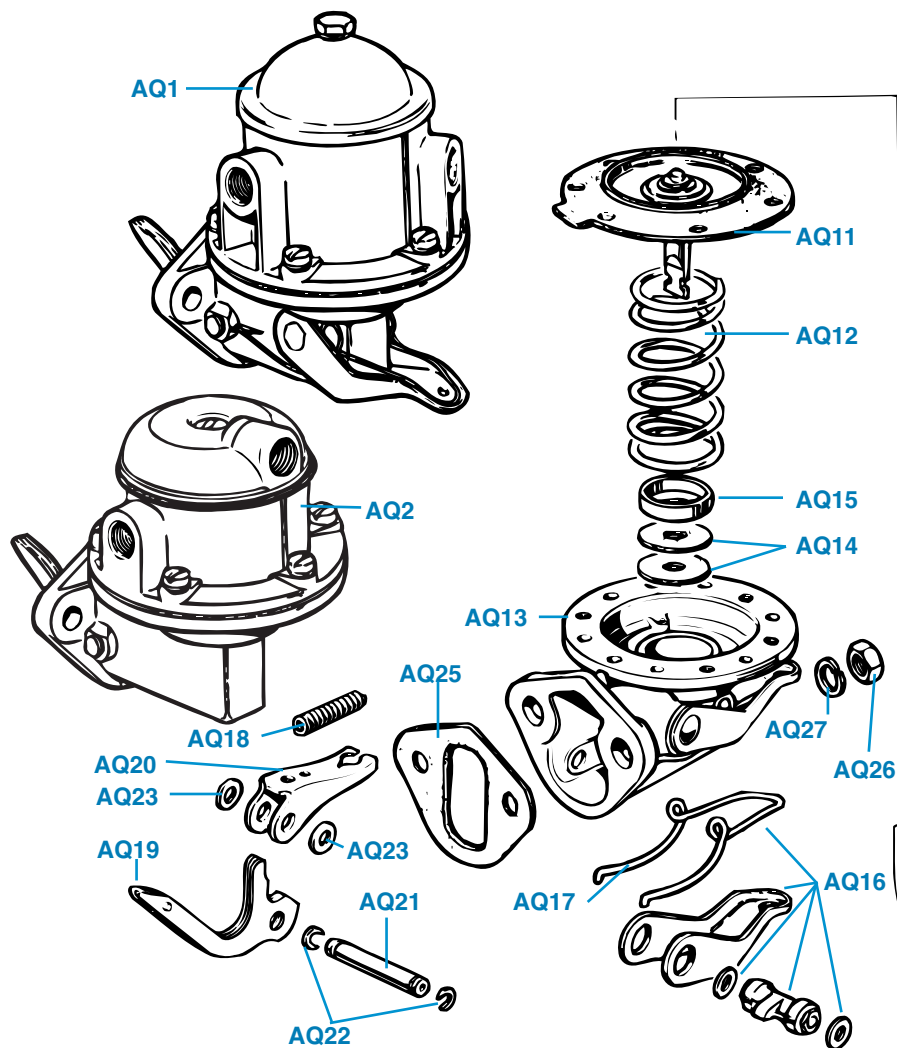
FUEL TANK AND CONNECTING DETAILS—CARB MODELS

Plate No.	Part No.	Description	No. Off
FUEL TANKS			
AP1	308312	FUEL TANK ASSEMBLY , fitted up to body no. 55029CC	1
AP2	103222	Plug , drain	1
AP3	WF513	Washer , fibre, sealing drain plug	1
	311401	FUEL TANK ASSEMBLY , fitted from body no. 55029CC up to 75000CC approx.	1
	103222	Plug , drain	1
	WFF513	Washer , fibre, sealing drain plug	1
	312353	Fuel Tank Assembly , without drain plug, fitted after body no. 75000CC approx.	1
FUEL TANK MOUNTING DETAILS			
AP4	611972	Felt , tank mounting, rear, top	1
AP5	611973	Felt , tank mounting, rear, bottom	1
AP6	617885	Felt , tank mounting, floor, fitted after body no. 75000CC approx.	1
AP7	611733	Seal , drain plug and tank outlet to body floor, fitted up to body no. 75000CC approx.	2
	611733	Seal , drain plug and tank outlet to body floor, fitted after body no. 75000CC approx.	1
	623176	Plug , rubber, blanking redundant tank drain hole, fitted after body no. 75000CC	1
		HARDWARE , securing fuel tank to body	
AP8	HU707P	Screw , set	6
AP9	WL207	Washer , lock	6
AP10	WP120	Washer , plain	6
FUEL FILLER CAPS (Exact change points are difficult to pinpoint.)			
FUEL FILLER CAPS , prior to 1970 model year			
AP11	714774	Fuel Filler Cap , magnetic	1
	722730	Fuel Filler Cap , probably magnetic; alternative to 714774	1
FUEL FILLER CAPS , 1970 and 1971 model years (Most or all of these caps will have a threaded hole in their necks for connecting to the fuel vapor absorption system.)			
	718455	FUEL FILLER CAP , magnetic with latch	1
	718756	Seal Unit	1
	723040	FUEL FILLER CAP	1
	718738	Seal	1
	725119	FUEL FILLER CAP	1
	725220	Seal , non-vented	1
	725572	FUEL FILLER CAP , 1972 up to 1976; after body no. 75000CC approx.	1
	725220	Seal , non-vented	1

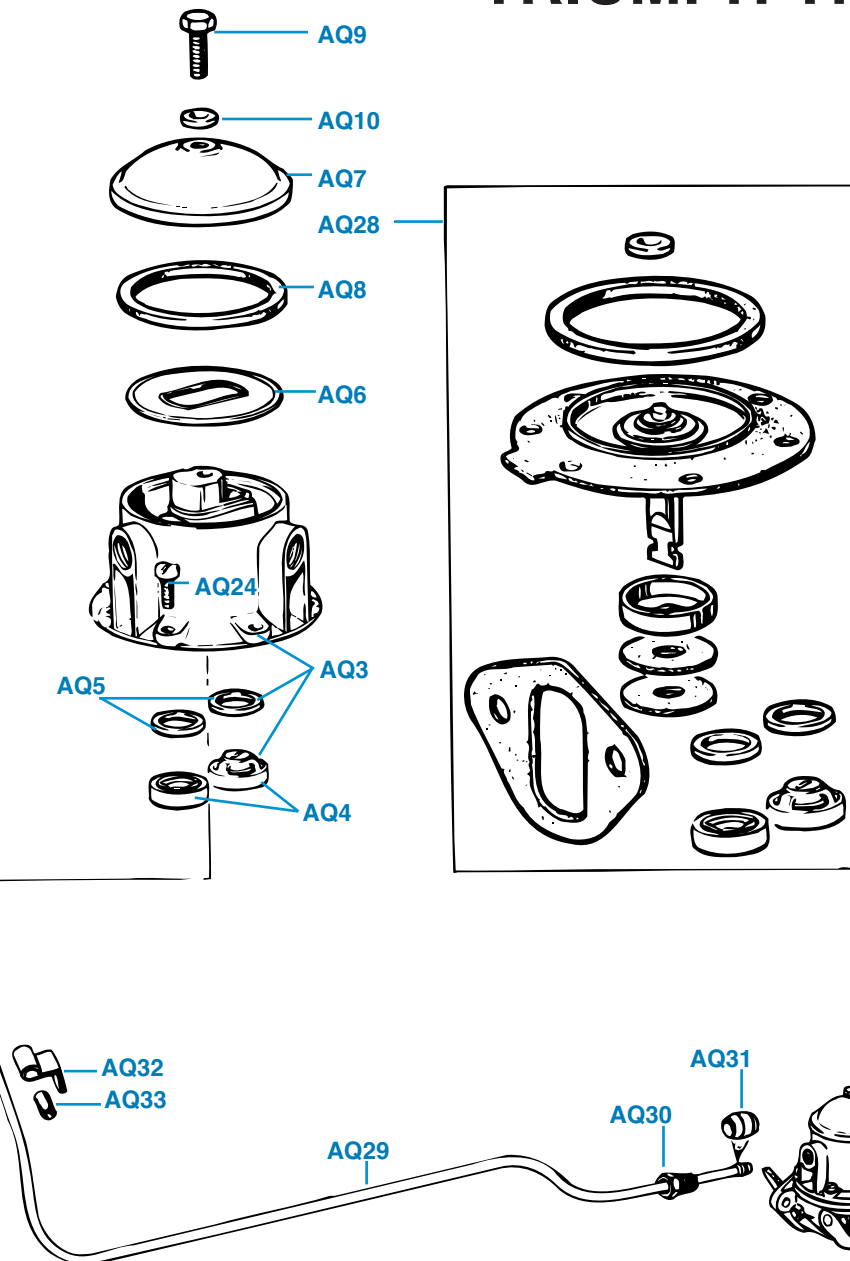
Plate No.	Part No.	Description	No. Off
FUEL CAP FITTING DETAILS			
AP12	622683	Grommet , rubber, between filler neck and mounting hole in rear deck	1
AP13	650279	Connection , rubber, between filler neck and fuel tank, fitted up to body no. 57567CC approx.	1
	155170	Connection , rubber, between filler neck and fuel tank, fitted from body no. 57568CC up to 75000CC approx.	1
	650279	Connection , rubber, between filler neck and fuel tank, fitted after body no. 75000CC approx.	1
AP14	CS4038	Clip , hose, securing connection to filler neck and to fuel tank	2
FUEL GAUGE TANK UNITS			
TANK SENDING UNIT			
		Washer , anti-rattle	1
		Gasket , cork, between tank unit and tank	1
HARDWARE , securing tank unit to tank			
		Screw , set	6
		Washer , fibre	6
FUEL PIPES AND CONNECTING DETAILS			
FUEL PIPE ASSEMBLY , from tank to rear connector			
AP20	143846	Nut , tubing, securing pipe to tank outlet	1
AP21	60142	Sleeve , tubing, sealing connection	1
AP22	TL8	Connector , rubber, fuel line, rear	1
AP23	115784	Fuel Pipe , from rear connector to intermediate connector, fitted up to body no. 75000CC approx.	1
AP24	307532	Fuel Pipe , from rear connector to intermediate connector, fitted after body no. 75000CC approx.	1
	310725	Connector , rubber, fuel line, intermediate	1
AP25	144938	Fuel Pipe , from intermediate connector to fuel filter	1
AP26	149637	Connector , rubber, fuel line, fuel pipe to fuel filter	2
AP27	115784	Fuel Filter , AC brand	1
AP28	149636	FUEL PIPE ASSEMBLY , from fuel filter to fuel pump	1
AP29	149635	Nut , tubing, male, securing pipe to pump	1
AP30	60142	Sleeve , tubing, sealing connection	1
AP31	TL8	HOSE CLIPS , securing fuel line connections; probably not fitted to earlier cars, before comm. no. CF	
AP32	CC5008	Clip , Corbin type, fitted to fuel filter connections, earlier fitment	4
AP33	UKC3795	Clip , hose, fitted to all connections, latest fitment	8
PIPE CLIPS , anchoring fuel lines to chassis frame			
AP34	616312	Clip , fuel pipe to edge of chassis, fitted up to comm. no. CF1 approx.	3
	616312	Clip , fuel pipe to edge of chassis, fitted after comm. no. CF1 approx.	1
AP35	149765	Clip , fuel pipe and brake pipe to chassis, fitted after comm. no. CF1 approx.	2
AP36	560772	Rivet , pop, securing 149765 clip	2

PLATE AQ

FUEL PUMP DETAILS—CARB MODELS



TRIUMPH TR6



FUEL PUMP DETAILS—CARB MODELS

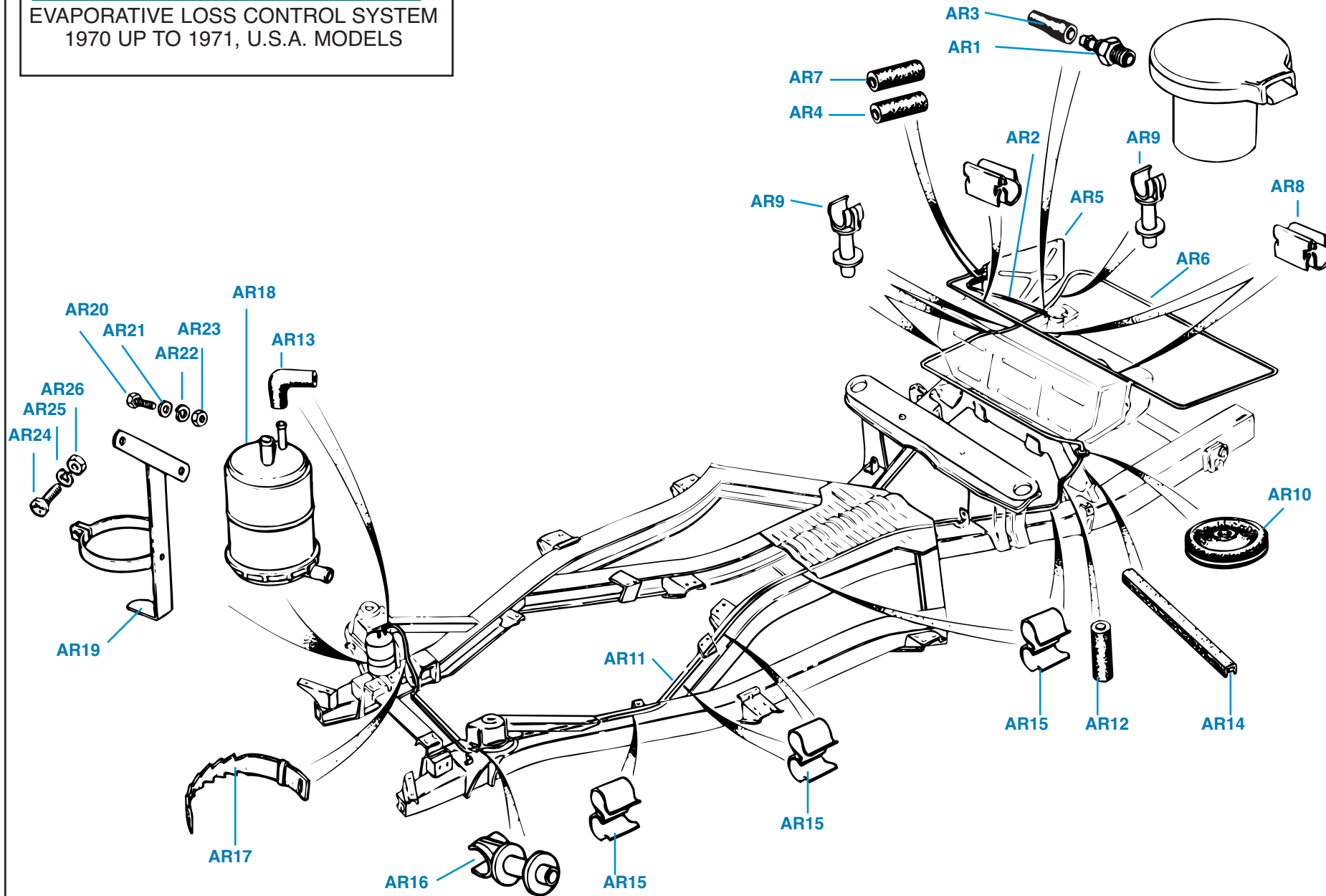
Plate No.	Part No.	Description	No. Off
AQ1	213577	Fuel Pump Assembly , AC brand, original equipment	1
AQ2	REPRO213577	Fuel Pump Assembly , aftermarket replacement; no repair kit available	1
		COMPONENTS FOR ORIGINAL EQUIPMENT AC PUMP	
AQ3	516538	UPPER CASTING AND VALVES ASSEMBLY	1
AQ4	515036	Valve Assembly	2
AQ5	515337	Gasket , valve	2
AQ6	516539	Screen , filter	1
AQ7	59650	Cover , filter	1
AQ8	516540	Gasket , filter cover	1
		HARDWARE , securing cover to upper casting	
AQ9	516537	Bolt	1
AQ10	510498	Washer	1
AQ11	501005	Diaphragm Assembly	1
ZA12	52492	Spring	1
AQ13	509926	BODY AND PRIMER ASSEMBLY	1
AQ14	508981	Washer , oil seal	2
AQ15	508980	Retainer , oil seal	1
AQ16	509927	PRIMER PARTS SET	1
AQ17	52498	Spring , primer	1
AQ18	52494	Spring , rocker arm	1
AQ19	516536	Rocker Arm	1
AQ20	52479	Link , rocker arm	1
AQ21	52483	Pin , rocker arm and link to body	1
AQ22	52484	Clip , securing pin	2
AQ23	52486	Washer , between link and body	2
AQ24	516541	Screw , securing upper casting to body	6
AQ25	138791	Gasket , between fuel pump flange and engine block	1
		HARDWARE , securing fuel pump to engine block	
	100433	Stud	2
AQ26	HN2008	Nut	2
AQ27	WL208	Washer , lock	2
AQ28	500524	Repair Kit , AC fuel pump	1
		FUEL PIPE DETAILS , fuel pump to carbs	
AQ29	306570	FUEL PIPE ASSEMBLY , fitted up to engine no. CC75000	1
	519396	FUEL PIPE ASSEMBLY , fitted from engine no. CC75000 up to CF12500	1
	310222	FUEL PIPE ASSEMBLY , fitted after engine no. CF12500	1
AQ30	60176	Nut , tubing, connecting pipe to fuel pump outlet	1
AQ31	102729	Sleeve , tubing, sealing connection	1
AQ32	138516	Bracket , supporting pipe from water pump body.	1
AQ33	114178	Grommet , fitted in support bracket	1

Plate No.	Part No.	Description	No. Off
-----------	----------	-------------	---------

PLATE AR

EVAPORATIVE LOSS CONTROL SYSTEM
1970 UP TO 1971, U.S.A. MODELS

TRIUMPH TR6



EVAPORATIVE LOSS CONTROL SYSTEM, 1970-1971, U.S.A. MODELS

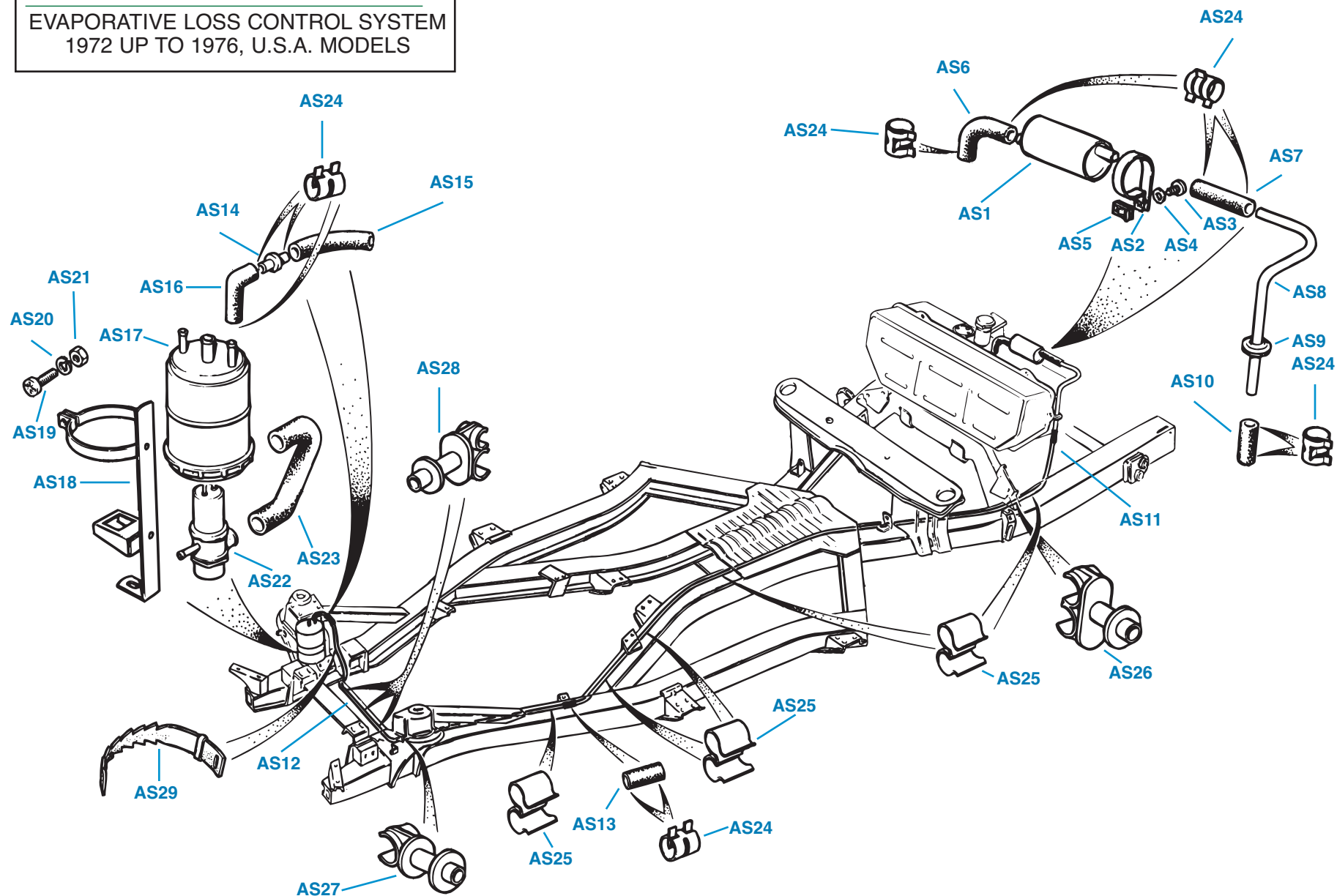
Plate No.	Part No.	Description	No. Off
EVAPORATIVE LOSS CONTROL SYSTEMS , fitted from comm. no. CC50000 up to CC75000 approx.			
Please Note: This section lists components for the evaporative loss control systems which utilized an "emission tank" mounted on the inside of the R.H. rear quarter. There were two slight variations of this system. The earlier system, fitted from comm. no. CC50000 up to CC55029 approx., included only a single breather connection between the fuel tank and the emission tank at the neck of the filler cap. The later system, fitted from comm. no. CC55030 approx. up to CC75000 approx. utilized a four way connector to allow three breather connections on the fuel tank to one on the emission tank. The emission tank was discontinued at comm. no. CC75000 approx., and it was replaced with the "separator canister" listed in Section AS.			
BREATHER CONNECTIONS , fuel tank to emission tank, fitted from comm. no. CC50000 approx. up to CC55029 approx.			
AR1	153673	Connection , breather, screwed into fuel filler neck	1
	WF509	Washer , fibre, sealing connection	1
AR2	215999	Pipe , nylon, from filler neck to emission tank	1
AR3	154280	Connector , rubber, nylon pipe to hose connection fitted to filler neck	1
AR4	153138	Connector , rubber, nylon pipe to breather fitting on emission tank	1
BREATHER CONNECTIONS , fuel tank to emission tank, fitted from comm. no. CC55030 approx. up to CC75000 approx.			
	153673	Connection , breather, screwed into fuel filler neck	1
	WF509	Washer , fibre, sealing connection; deleted and replaced with Loctite at an unknown comm. no.	1
	155334	Connection , four-way	1
	154280	Connector , rubber, between four-way connection and filler neck	1
	153146	Hose , rubber, between four-way connector and breather fitting on R.H. top of fuel tank	1
	216007	Pipe , nylon, between four-way connector and breather fitting on L.H. top of fuel tank	1
	153138	Connector , rubber, nylon pipe to four-way connection and nylon pipe to breather fitting on fuel tank	2
	215988	Pipe , nylon, between four-way connection and emission tank	1
	153138	Connector , rubber, nylon pipe to four-way connection and nylon pipe to breather fitting on emission tank	2

Plate No.	Part No.	Description	No. Off
EVAPORATIVE LOSS CONTROL SYSTEMS—Continued			
EMISSION TANK DETAILS			
Emission Tank Assembly			
AR5	216324	Rivet , imex, securing tank to inner rear fender	1
	575261		4
PIPE DETAILS , from emission tank to carbon canister			
AR6	216000	Pipe , nylon, rear, from emission tank, over top of fuel tank, around trunk, and through trunk floor	1
AR7	153138	Connector , rubber, nylon pipe to fitting on emission tank	1
AR8	153229	Clip , edge, securing nylon pipe to fuel tank flange	4
AR9	150930	Clip , nylon, single, anchoring nylon pipe to trunk floor	4
AR10	131155	Grommet , rubber, between nylon pipe and hole in trunk floor	1
AR11	215992	Pipe , nylon, front, from rear pipe to carbon canister	1
AR12	153138	Connector , rubber, front nylon pipe to rear nylon pipe	1
AR13	153662	Connector , rubber, front nylon pipe to fitting on carbon canister, fitted after comm. no. CC55029 approx.	1
	153139	Connector , rubber, front nylon pipe to fitting on carbon canister, fitted after comm. no. CC55029 approx.	1
AR14	154036	Finisher , edge, rear shock absorber mounting bracket	1
AR15	627176	Clip , pipe, nylon pipe to fuel pipe	5
AR16	150930	Clip , nylon, single, anchoring nylon pipe to chassis frame	1
AR17	145891	Clip , fir tree, securing nylon pipe to R.H. radiator stay	1
CARBON CANISTER DETAILS			
CARBON CANISTER			
AR18	216355	Pad , filter, lower	1
	156677		1
AR19	156284	Bracket , mounting, carbon canister	1
HARDWARE , securing mounting bracket to radiator stay			
AR20	HU806	Screw , set	1
AR21	WP8	Washer , plain	1
AR22	WL208	Washer , lock	1
AR23	HN2008	Nut	1
HARDWARE , clamping carbon canister into mounting bracket			
AR24	HU508	Screw , set	1
AR25	WL205	Washer , lock	1
AR26	HN2005	Nut	1

PLATE AS

EVAPORATIVE LOSS CONTROL SYSTEM
1972 UP TO 1976, U.S.A. MODELS

TRIUMPH TR6



EVAPORATIVE LOSS CONTROL SYSTEMS, 1972 UP TO 1976, U.S.A.

Plate No.	Part No.	Description	No. Off
EVAPORATIVE LOSS CONTROL SYSTEMS , fitted after comm. no. CC75000 approx.			
Please Note: Although only the latest layout is illustrated, this section actually lists the components for three slightly different evaporative loss control systems, that fitted to 1972 models, that fitted to 1973 models, that fitted to 1974-1976 models. The 1972 model year was chosen as the beginning point for this section because it was then that the "emission tank" mounted on the inside of the R.H. rear quarter was discontinued and then that the "separator canister" mounted on top of the fuel tank first appeared. The layouts used in the 1972 and 1973 model years vary from the illustrated layout in that the nylon pipe connected to the separator canister makes a loop around the trunk similar to the illustration for the previous section before passing through the trunk floor to splice with the pipe going forward along the chassis frame. In addition, the anti run-on valve did not appear until the 1973 model year. Components for these variations and other minor ones are listed in this section, although they are not illustrated.			
AS1	158511	Canister , separator	1
AS2	158523	Clip , canister	1
		HARDWARE , securing canister clip, fitted up to comm. no. CF1 approx.	
	HU506	Screw , set	1
	WPP5	Washer , plain	1
	WL205	Washer , lock	1
	HN2005	Nut	1
		HARDWARE , securing canister clip, fitted after comm. no. CF1 approx.	
AS3	YX5505	Screw , self-tapping	1
AS4	WP5	Washer , plain	1
AS5	FF2545	Nut , fix	1
		CONNECTORS , separator canister to fuel tank fitting	
	153146	Connector , fitted up to comm. no. CF12500	1
AS6	UKC2848	Connector , fitted after comm. no. CF12500	1
		CONNECTORS , separator canister to pipe	
	153138	Connector , fitted up to comm. no. CF1 approx.	1
	153139	Connector , fitted from comm. no. CF1 up to CF12500	1
AS7	115784	Connector , 5-inch length, fitted after comm. no. CF12500	1

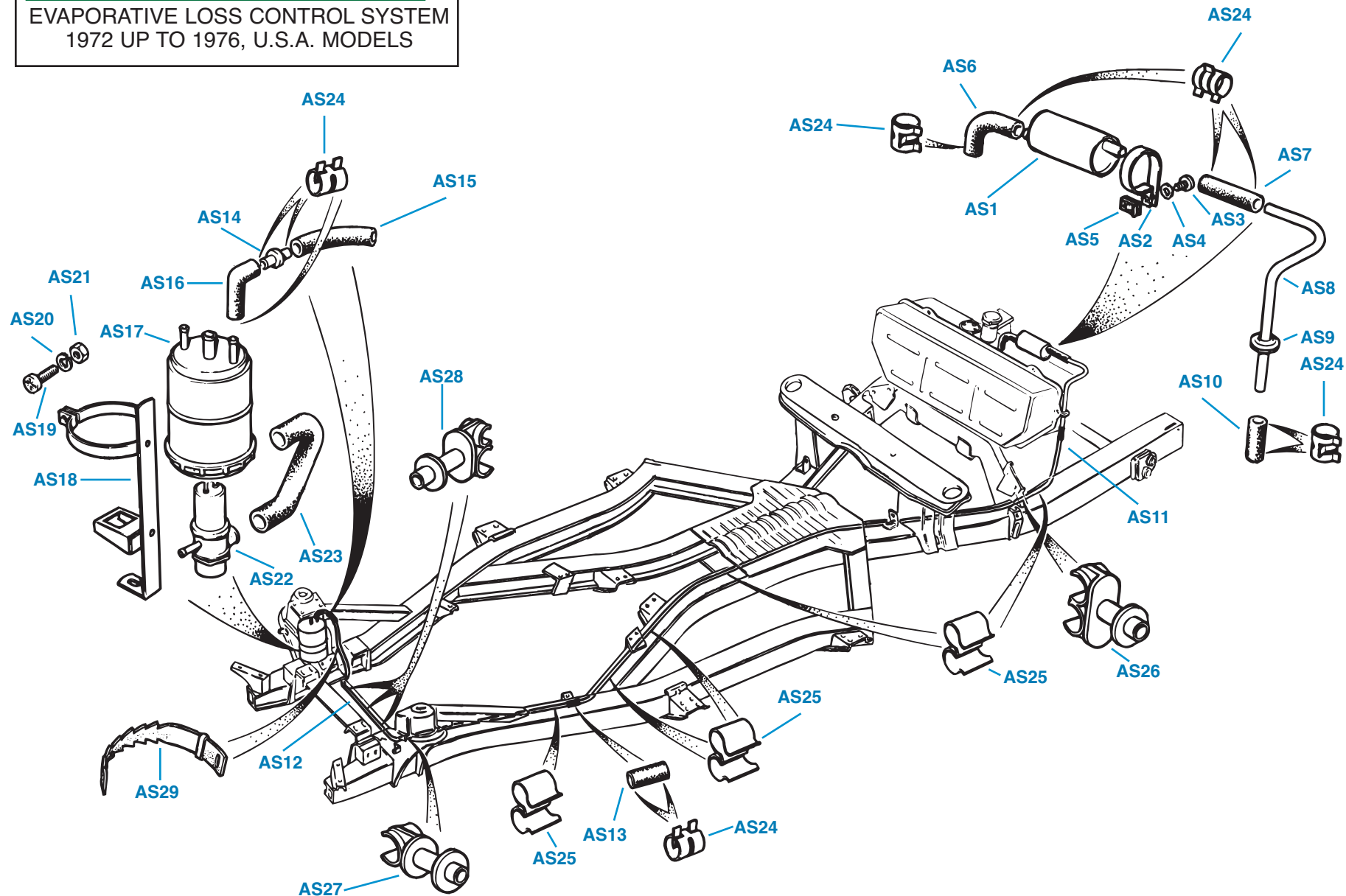
Plate No.	Part No.	Description	No. Off
EVAPORATIVE LOSS CONTROL SYSTEMS—Continued			
		PIPES , from separator canister through trunk floor	
	215990	Pipe , nylon, rear, fitted up to comm. no. CF1 (Makes loop around trunk before passing through trunk floor similar to illustration for previous section.)	1
	217857	Pipe , nylon, rear, fitted from comm. no. CF1 up to CF12500 (Makes loop around trunk before passing through trunk floor similar to illustration for previous section.)	1
AS8	215997	Pipe , nylon, rear, fitted after comm. no. CF12500 (As illustrated.)	1
AS9	131155	Grommet , rubber, sealing hole in trunk floor around pipe, fitted earlier (?)	1
	600395	Grommet , rubber, sealing hole in trunk floor around pipe, fitted later (?)	1
		CONNECTORS , rear nylon pipe to intermediate pipe	
	153138	Connector , rear, fitted up to comm. no. CF12500	1
AS10	115784	Connector , rear, fitted after comm. no. CF12500	1
		PIPES , from rear connector to front connector	
	216014	Pipe , nylon, intermediate, fitted up to comm. no. CF1	1
	217858	Pipe , nylon, intermediate, fitted from comm. no. CF1 up to CF12500	1
		PIPE ASSEMBLY , intermediate, fitted after comm. no. CF12500	
AS11	310725	Pipe , steel, from rear connector to intermediate connector	1
AS12	216009	Pipe , nylon, 58-inch length, from intermediate connector to front connector	1
AS13	115784	Connector , intermediate	1
AS14	158526	Restrictor	1
		CONNECTORS , intermediate pipes to restrictor	
	153138	Connector , front, fitted up to comm. no. CF12500	1
AS15	144938	Connector , front, fitted after comm. no. CF12500	1
		CONNECTORS , restrictor to carbon canister	
	153139	Connector , fitted up to comm. no. CF12500	1
AS16	144938	Connector , fitted after comm. no. CF12500	1

(Continued on next page.)

PLATE AS

EVAPORATIVE LOSS CONTROL SYSTEM
1972 UP TO 1976, U.S.A. MODELS

TRIUMPH TR6



EVAPORATIVE LOSS CONTROL SYSTEMS, 1972 UP TO 1976, U.S.A.

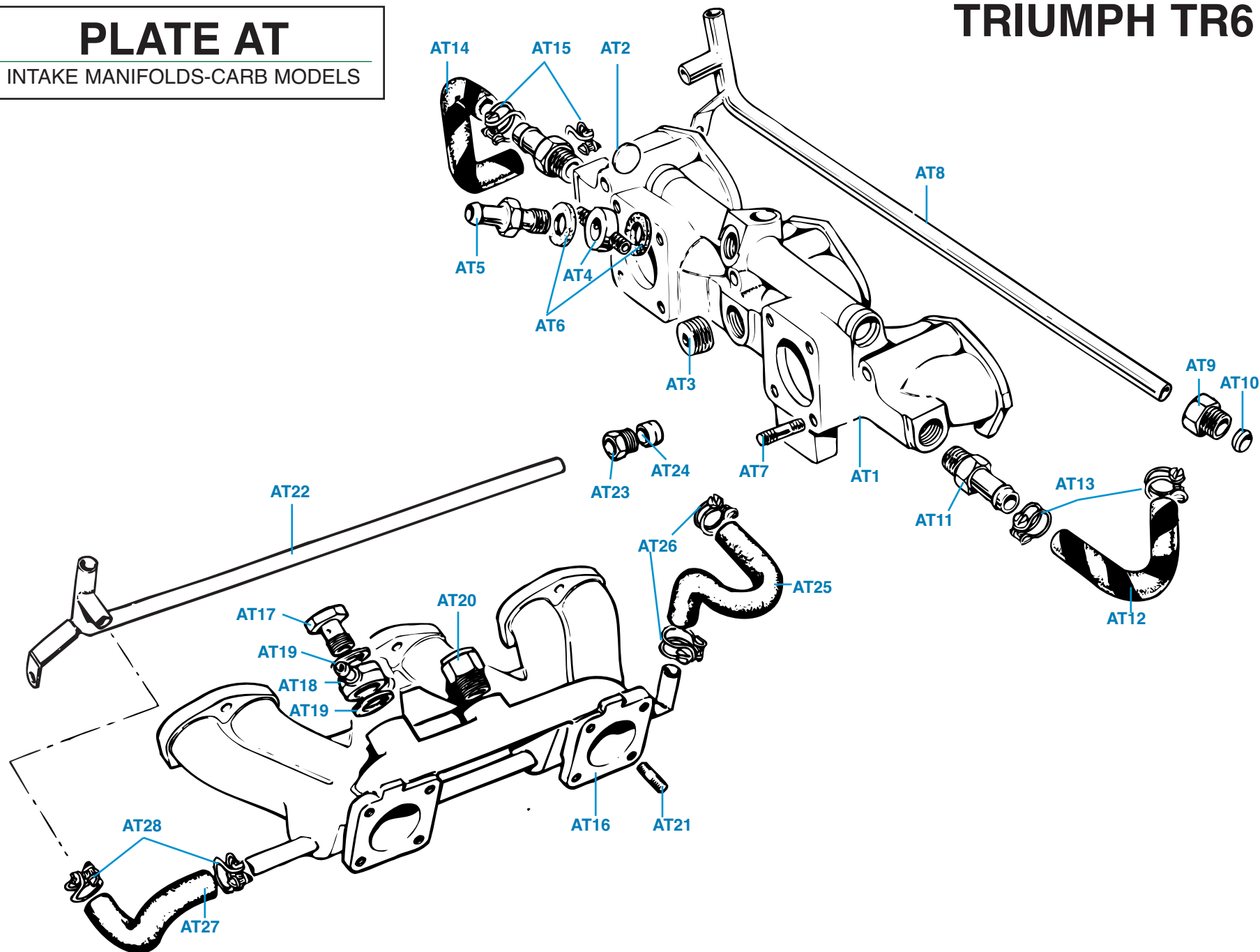
Plate No.	Part No.	Description	No. Off
EVAPORATIVE LOSS CONTROL SYSTEMS—Continued			
FUEL VAPOR ABSORPTION DEVICES (CARBON CANISTERS)			
CARBON CANISTER DETAILS , fitted up to comm. no. CF1			
	216355	CARBON CANISTER	1
	156677	Pad , filter, lower	1
	156284	Bracket , mounting, carbon canister	1
		HARDWARE , securing mounting bracket to radiator stay	
	HU806	Screw , set	1
	WP8	Washer , plain	1
	WL208	Washer , lock	1
	HN2008	Nut	1
		HARDWARE , clamping carbon canister into mounting bracket	
	HU508	Screw , set	1
	WL205	Washer , lock	1
	HN2005	Nut	1
CARBON CANISTER DETAILS , fitted after comm. no. CF1			
	218996	Carbon Canister , Coopers brand	1
AS17	TKC1331	Carbon Canister , Tecalemit brand alternative to but not interchangeable with 218996	1
	159808	Bracket , mounting, carbon canister and anti run-on valve, for use with Coopers brand canister	1
AS18	UKC5965	Bracket , mounting, carbon canister and anti run-on valve, for use with Tecalemit brand canister	1
		HARDWARE , securing mounting bracket to radiator (Bracket is secured using radiator mounting hardware.)	
		HARDWARE , clamping carbon canister into mounting bracket	
AS19	PX510	Screw , set	1
AS20	WL205	Washer , lock	1
AS21	HN2005	Nut	1
AS22	12H4295	Anti Run-On Valve , fitted after comm. no. CF1	1
AS23	159813	Hose , between carbon canister and anti run-on valve, fitted after comm. no. CF1	1
Please Note: Additional hoses running to and from carbon canister and anti run-on valve are listed in Sections BF, BG, and BH.			

Plate No.	Part No.	Description	No. Off
EVAPORATIVE LOSS CONTROL SYSTEMS—Continued			
HOSE AND PIPE CLIPS , securing connections and anchoring pipes to body and chassis frame			
AS24	UKC3795	Clip , hose, securing all connections; may not have been used before comm. no. CF12500	12
	150930	Clip , nylon, single, anchoring evaporative loss pipe to R.H. trunk floor, fitted up to comm. no. CF12500	4
	154036	Finisher , edge, L.H. shock absorber mounting bracket	1
AS25	627176	Clip , securing evaporative loss pipe to fuel pipe	6
AS26	626960	Clip , nylon, double, anchoring fuel pipe and evaporative loss pipe to chassis frame rear sidemember	1
AS27	150930	Clip , nylon, single, anchoring evaporative loss pipe to L.H. front suspension support bracket	1
AS28	624155	Clip , nylon, double, anchoring evaporative loss pipe and brake pipe to chassis frame front crossmember	1
AS29	145891	Clip , fir tree, securing evaporative loss pipe to radiator stay	3
Please Note: The clips which secure hydraulic pipes, fuel pipes, and evaporative loss pipes to the chassis are listed in a fragmented manner in Sections AP, AS, and DM. Contradictions exist, and you will want to refer to all of these sections and construct a mounting system which is consistent with the pipes used and the mounting holes which exist on the particular car in question.			

PLATE AT

INTAKE MANIFOLDS-CARB MODELS

TRIUMPH TR6



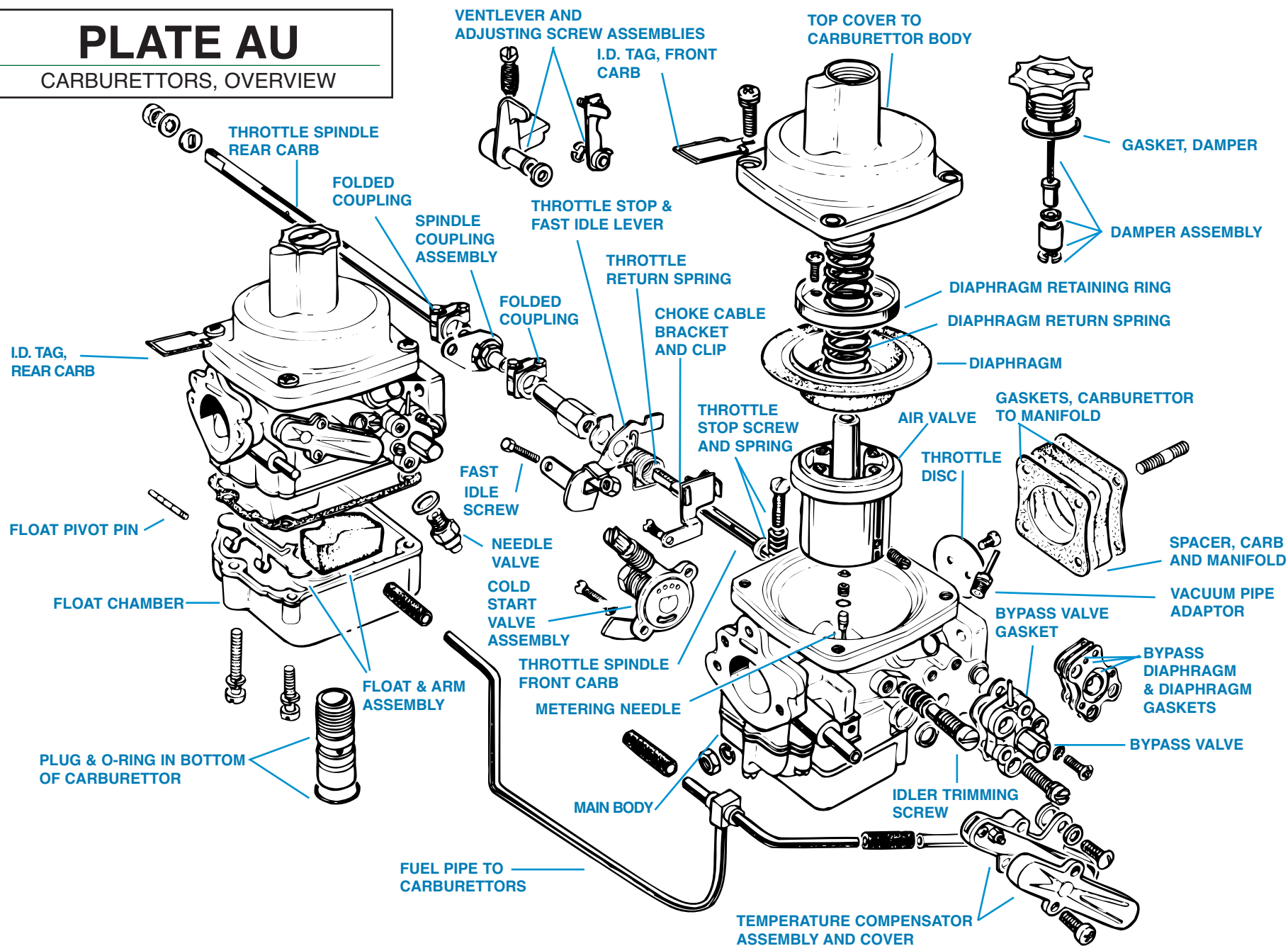
INTAKE MANIFOLDS—CARB MODELS

Plate No.	Part No.	Description	No. Off
		INTAKE MANIFOLD DETAILS , up to eng. no. CC75000	
AT1	308088	Manifold , intake, fitted up to eng. no. CC50000	1
	311378	Manifold , intake, fitted from eng. no. CC50000 up to CC75000	1
		Please Note: Manifold gaskets and hardware to secure manifolds to cylinder heads are listed along with exhaust manifolds in Section BY.	
AT2	46172	Plug , core	2
AT3	116516	Plug , dry seal	1
		BANJO CONNECTOR DETAILS , brake servo hose, etc., fitted up to eng. no. CC50000	
AT4	149362	Connector , banjo	1
AT5	149360	Bolt , banjo	1
AT6	WF513	Washer , fibre	2
		ADAPTOR DETAILS , brake servo hose, fitted after eng. no. CC50000	
	149487	Adaptor , brake servo hose	1
	WF513	Washer , fibre	2
AT7	132873	Stud , carburettor attachment	8
		WATER PIPES AND HOSES	
AT8	214405	Pipe Assembly , water return	1
AT9	101302	Nut , tubing, securing pipe to adaptor on water pump housing	1
AT10	TL11	Sleeve , tubing, securing connection	1
AT11	138810	Adaptor , water hoses to intake manifold	2
AT12	149439	Hose , from water pump housing to manifold (Black and yellow striped hose.)	1
	154149	Hose , from water pump housing to manifold (Green hose.); alternative to 149439	1
AT13	CS4012	Clip , securing hose	2
AT14	148994	Hose , from intake manifold to return pipe (Black and yellow striped hose.)	1
	154146	Hose , from intake manifold to return pipe (Green Hose.); alternative to 148994	1
AT15	CS4012	Clip , securing hose	2

Plate No.	Part No.	Description	No. Off
		INTAKE MANIFOLD DETAILS , after engine no. CC75000	
	312187	Manifold , intake, fitted from eng. no. CC75000 up to CF12500	1
AT16	TKC1100	Manifold , intake, fitted after eng. no. CF12500	1
		Please Note: Manifold gaskets and hardware to secure manifolds to cylinder heads are listed with exhaust manifolds in Section BY.	
	46172	Plug , core, fitted up to eng. no. CC12500	2
	116516	Plug , dry seal, fitted up to eng. no. CC12500	1
		ADAPTOR DETAILS , brake servo hose, fitted up to eng. no. CF	
AT17	148515	Bolt , banjo	1
AT18	159892	Connection , banjo	1
AT19	WF513	Washer , fibre	2
		BANJO CONNECTOR DETAILS , brake servo hose, carbon canister hose, and diverter valve hose, fitted after eng. no. CF35000	
	148515	Bolt , banjo	1
	UKC3578	Connection , banjo	1
	WF513	Washer , fibre	2
AT20	UKC2313	Adaptor , E.G.R. pipe to intake manifold	1
AT21	132873	Stud , carburettor attachment	8
		WATER PIPES AND HOSES	
AT22	214405	Pipe Assembly , water return	1
AT23	101302	Nut , tubing, securing pipe to adaptor	1
AT24	TL11	Sleeve , tubing, securing connection	1
AT25	157688	Hose , from water pump housing to manifold (Green hose.)	1
AT26	CS4012	Clip , wire type, securing hose	2
	CJ3014	Clip , worm gear type, securing hose; alternative to CS4012	2
AT27	157689	Hose , from intake manifold to return pipe (Green hose.), fitted from eng. no. CC75000 up to CF35000	1
	UKC5253	Hose , from intake manifold to return pipe (Green hose.), fitted after eng. no. CF35000	1
AT28	CS4012	Clip , wire type, securing hose	2
	CJ3014	Clip , worm gear type, securing hose; alternative to CS4012	2

PLATE AU

CARBURETTORS, OVERVIEW



CARBURETTORS—OVERVIEW

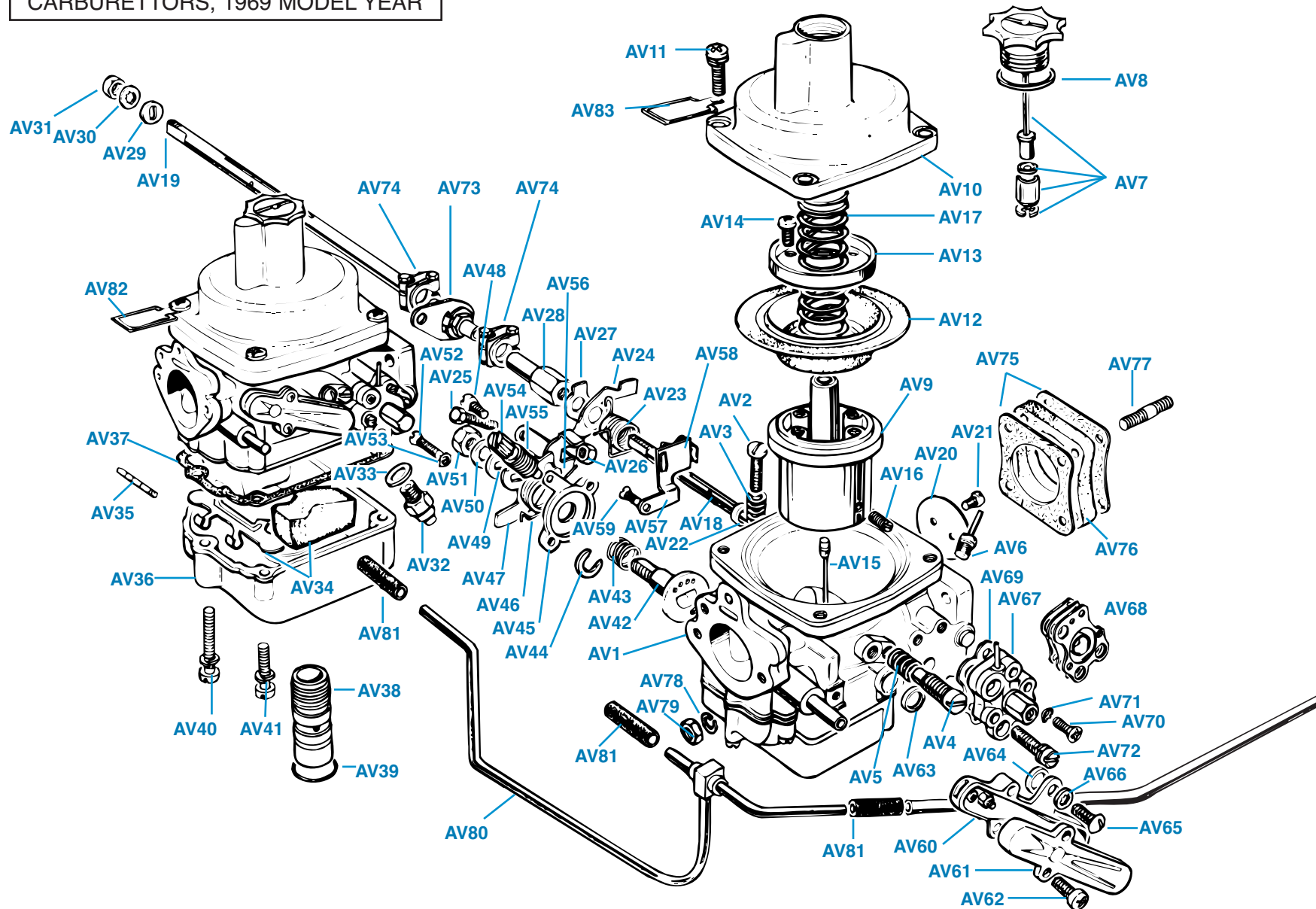
Plate No.	Part No.	Description	No. Off
INTRODUCTORY NOTE: This section has the stated purpose of giving the user an overview of all of the Zenith Stromberg 175CD carburetors fitted to the TR6 model during the years of production. Zenith Stromberg model numbers and part numbers are also included to help the user in carburetor identification and in utilization of information found in workshop manuals and other publications. The illustration for this section shows the various components of a typical carburetor and designates the locations of various identifying markings. The listings in this section adhere, largely, to those found in the Triumph factory spare parts catalogues for the TR6 model, although it does appear that mixed sets of 175CD-2SE carbs may have been fitted to some cars, even some ranges of cars, in the model years before 1972. It also appears that there may also have been a good deal of overlap of engine numbers to which respective carb numbers may have been fitted during this period. The important thing is to identify each of your carbs before ordering parts, which can be rather difficult if the brass identification tags have been lost, although the numbers were often stamped on the undersides of the mounting flanges of model 175CD-2SE carbs. To facilitate carb identification, checklists are included at the beginnings of the six individual carb sections which follow.			
		CARBURETTORS , fitted up to eng. no. CC50000 (1969 model year); see Section AV for parts breakdown	
308376		REAR CARBURETTOR ASSEMBLY , Zenith Stromberg	1
		model 175CD-2E, part no. C3150LH	
308376R		Factory Rebuilt Unit	1
308377		FRONT CARBURETTOR ASSEMBLY , Zenith Stromberg	1
		model 175CD-2SE, part no. C3150RH	
308377R		Factory Rebuilt Unit	1
		CARBURETTORS , fitted from eng. no. CC50000 up to CC65346 approx. (1970 model year and beyond); note possible overlap with next listing; see Section AW for parts breakdown.	
311277		REAR CARBURETTOR ASSEMBLY , Zenith Stromberg	1
		model 175CD-2SE, part no. C3292LH (with non-adj. needle); part no. C3365LH (with adj. needle)	
311277R		Factory Rebuilt Unit	1
311276		FRONT CARBURETTOR ASSEMBLY , Zenith Stromberg	1
		model 175CD-2SE, part no. C3292RH (with non-adj. needle); part no. C3365RH (with adj. needle)	
311276R		Factory Rebuilt Unit	1
		CARBURETTORS , fitted from eng. no. CC58258 approx. up to CC75000 (1971 model year); note possible overlap with previous listing; see Section AX for parts breakdown.	
312130		REAR CARBURETTOR ASSEMBLY , Zenith Stromberg	1
		model 175CD-2SE, part no. C3385LH	
312130R		Factory Rebuilt Unit	1

Plate No.	Part No.	Description	No. Off
311865		FRONT CARBURETTOR ASSEMBLY , Zenith Stromberg	1
		model 175CD-2SE, part no. C3385RH	
311865R		Factory Rebuilt Unit	1
		CARBURETTORS , fitted from eng. no. CC75000 up to CF1 (1972 model year); see Section AY for parts breakdown.	
312207		REAR CARBURETTOR ASSEMBLY , Zenith Stromberg	1
		model 175CD-2SE, part no. C3337LH	
312207R		Factory Rebuilt Unit	1
312206		FRONT CARBURETTOR ASSEMBLY , Zenith Stromberg	1
		model 175CD-2SE, part no. C3337RH	
312206R		Factory Rebuilt Unit	1
		CARBURETTORS , fitted from eng. no. CF1 up to CD12500 (1973 model year); see Section AZ for parts breakdown.	
313238		REAR CARBURETTOR ASSEMBLY , Zenith Stromberg	1
		model 175CD-SEV, part no. C3508LH	
313238R		Factory Rebuilt Unit	1
313237		FRONT CARBURETTOR ASSEMBLY , Zenith Stromberg	1
		model 175CD-SEV, part no. C3508RH	
313237R		Factory Rebuilt Unit	1
		CARBURETTORS , fitted from eng. no. CF12500 up to CF35000 (1974 and early 1975 model years); see Section BA for parts breakdown.	
RKKC465		REAR CARBURETTOR ASSEMBLY , Zenith Stromberg	1
		model 175CD-SEVX, part no. C3613LH	
RKC465R		Factory Rebuilt Unit	1
RKC466		FRONT CARBURETTOR ASSEMBLY , Zenith Stromberg	1
		model 175CD-SEVX, part no. C3613RH	
RKC466R		Factory Rebuilt Unit	1
		CARBURETTORS , fitted after eng. no. CF35000 (late 1975 and 1976 model years); see Section BB for parts breakdown.	
RKC1798		REAR CARBURETTOR ASSEMBLY , Zenith Stromberg	1
		model 175CD-SEVX, part no. C3771LH	
RKC1798R		Factory Rebuilt Unit	1
RKC1799		FRONT CARBURETTOR ASSEMBLY , Zenith Stromberg	1
		model 175CD-SEVX, part no. C3771RH	
RKC1799R		Factory Rebuilt Unit	1

PLATE AV

CARBURETTORS, 1969 MODEL YEAR

TRIUMPH TR6



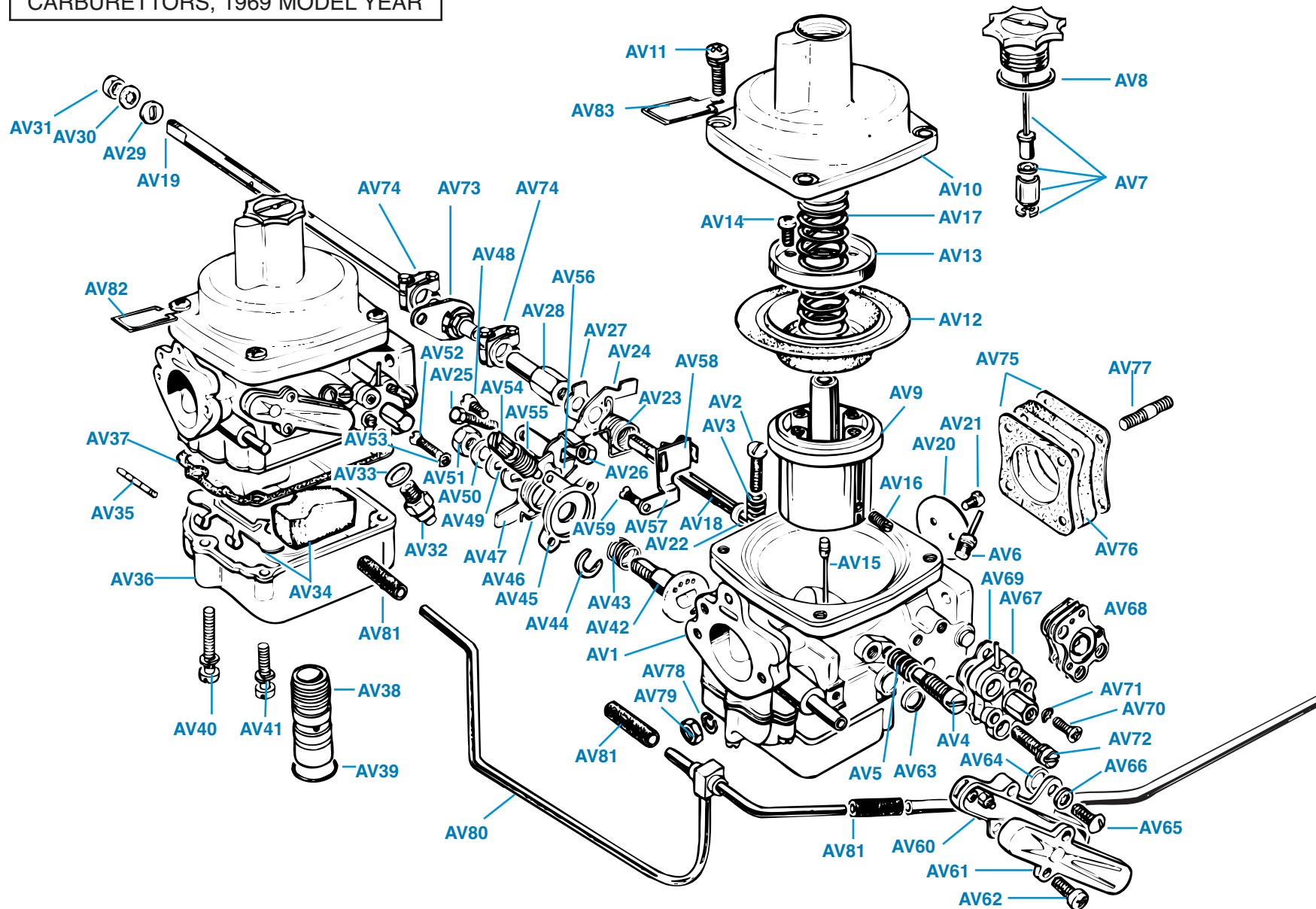
CARBURETTORS, 1969 MODELS

Plate No.	Part No.	Description	No. Off	Plate No.	Part No.	Description	No. Off
		CARBURETTORS , fitted up to eng. no. CC50000				SUCTION CHAMBER DETAILS—Continued	
	ZEC3150LH	REAR CARBURETTOR ASSEMBLY , Zenith Stromberg model 175CD-2SE, with non-adjustable metering needle	1	AV8	ZEB18532	Gasket , damper	2
	308376R	Factory Rebuilt Unit	1	AV9		Air Valve and Guide Rod Assembly	NSS
	ZEC3150RH	FRONT CARBURETTOR ASSEMBLY , Zenith Stromberg model 175CD-2SE, with non-adjustable metering needle	1	AV10		Top Cover Assembly, suction chamber	NSS
	308377R	Factory Rebuilt Unit	1	AV11	ZEO19654	Screw and Washer Assembly , securing top cover assembly	6
		CARBURETTOR IDENTIFICATION CHECKLIST			ZEB18966	Screw and Washer Assembly , securing top cover kit, float chamber	2
		• Metal tags attached to top cover screws should read C3150LH and C3150RH . Numbers may also be stamped on bottom of manifold flange.		AV12	ZEB17421	Diaphragm	2
		• Metering needles are non-adjustable.		AV13		Ring , diaphragm retaining	NSS
		• There are no breather hose connections on these carburetors.		AV14	ZEB18008	Screw , securing diaphragm and retaining ring	8
		• Locate fitting on upper side of front carb on manifold flange for attaching vacuum pipe to distributor vacuum advance unit.		AV15	ZEB18580	Metering Needle (Coded B.2Y.)	2
		• Locate vacuum valve mounted under front carb on bell crank support bracket. Valve includes fitting for attaching vacuum pipe to distributor vacuum retard unit.		AV16	ZEO19673	Screw , locking metering needle	2
		• Bypass valves may or may not be adjustable, and there are vacuum fittings on the tops of both bypass valves for attaching to pipes running to manifold and vacuum control valve.		AV17	ZEB18277	Spring , air valve return	2
		• Identification characters stamped onto air cleaner faces may be 232T and 233T , although we have seen carbs without any characters marked in this position.				THROTTLE DETAILS	
		• Vent hole in air cleaner face does not have an inset brass bush.		AV18	ZEB18230	Spindle , throttle, front carb	1
		• Check cold start valves; cams will be stamped SRZ , TRZ , or TR ; and bodies will be marked B or AB .		AV19	ZEB18119	Spindle , throttle, rear carb	1
		• Plugs in bottoms of float chambers will be flat with single screwdriver slots.		AV20	ZEO19608	Disc , throttle	2
		• Identifying individual model 175CD-2SE can be tricky, and the surest method is to retain the metal identification tags.		AV21	ZEO10351	Screw , securing throttle disc	4
				AV22	ZEB18032	SEAL ASSEMBLY , throttle shaft	4
					517003/N	Seal , throttle shaft (neoprene part)	4
				AV23	ZEB17941	Spring , throttle return	2
				AV24	ZEB18124	Lever , throttle stop and fast idle	2
				AV25	ZEB17562	Screw , fast idle	2
				AV26	ZEO19480	Nut , locking screw	2
				AV27	ZEO19067	Washer , tab, front carb only	1
				AV28	ZEB17337	Nut , extension, front carb only	1
				AV29	ZEO5660	Washer , spacing, rear carb only	2
				AV30	ZEO8758	Washer , shakeproof, rear carb only	1
				AV31	ZEL1475	Nut , rear carb only	1
						FLOAT CHAMBER DETAILS	
					ZEB19053	NEEDLE VALVE PACK	2
				AV32	ZEB18453	Needle Valve	2
				AV33	ZEO9729	Washer , needle valve	2
				AV34	ZEB19470	Float and Arm Assembly	2
				AV35	ZEB18613	Pin , pivot, float assembly	2
				AV36	ZEB16506	Float Chamber	2
				AV37	ZEB16518	Gasket , float chamber	2
				AV38	ZEB17916	PLUG , sealing	2
				AV39	ZEO19658	“O” Ring	2
						HARDWARE , securing float chamber to carb body	
				AV40	ZEB19224	Screw and Lock Washer Assembly , long	8
				AV41	ZEB19225	Screw and Lock Washer Assembly , short	4
						(Continued on next page.)	
AV1		Main Body Assembly	NSS				
AV2	ZEO19532	Screw , throttle stop	2				
AV3	ZEO19508	Spring , throttle stop	2				
AV4	ZEB18479	Screw , idler trimming	2				
AV5	ZEB18480	Spring , idler trimming	2				
AV6	ZEB17086	Adaptor , vacuum pipe to front carb, for connection to distributor vacuum advance unit	1				
		SUCTION CHAMBER DETAILS					
AV7	ZEB18533	DAMPER ASSEMBLY , black plastic cap	2				
	ZEB17632	Washer	2				
	ZEO19640	Bushing	2				
	ZEO19641	Ring , retaining	2				

PLATE AV

CARBURETTORS, 1969 MODEL YEAR

TRIUMPH TR6



CARBURETTORS, 1969 MODEL YEAR

Plate No.	Part No.	Description	No. Off
STARTER (CHOKE) DETAILS			
COLD START VALVE ASSEMBLY			
AV42	ZEB19178	Spindle Assembly	2
AV43	ZEB16533	Starter Spring	2
AV44	ZEB16556	"C" Washer, on starter spindle	2
AV45	ZEB18596	Cover	2
AV46	ZEB16934	Spring, return	2
AV47	ZEB19008	Lever and Cam Assembly	2
AV48	ZEP12867	Screw, swivel	2
		HARDWARE , securing lever and cam assemblies to spindles	
AV49	ZEB16670	Washer, spacing	2
AV50	ZEO16412	Washer, shakeproof	2
AV51	ZEO16411	Nut	2
		HARDWARE , securing starter components to carb bodies	
AV52	ZEB17269	Screw	4
AV53	ZEL1402	Washer, shakeproof	4
ADJUSTABLE STOP DETAILS			
AV54		Screw, cam lever stop	NSS
AV55		Spring, on screws	NSS
AV56		Pin, roll, securing screws	NSS
CHOKE CABLE BRACKET DETAILS			
AV57	ZEB17088	BRACKET AND CLIP ASSEMBLY	2
AV58	ZEB17626	Clip	2
AV59	ZEB15346	Screw, securing brackets to carb bodies	2
TEMPERATURE COMPENSATOR DETAILS			
AV60	ZEB18681	TEMPERATURE COMPENSATOR ASSEMBLY	2
AV61	ZEB17933	Cover, plastic	2
AV62	ZEB18285	Screw, securing cover	4
AV63	ZEB17947	Washer, sealing, in carb counterbore	2
AV64	ZEB17946	Washer, sealing, between temperature compensator and carb body	2
AV65	ZEO9200	Screw, securing temperature compensator	4
AV66	ZEO7734	Washer, shakeproof, securing screws	4
BYPASS VALVE DETAILS			
AV67	ZEB17928	BYPASS VALVE ASSEMBLY	2
AV68	ZEBPV6	Diaphragm, bypass valve	2
AV69	ZEB17929	Gasket, bypass valve	2
AV70	ZEB18821	Screw, countersunk, fixing bypass cover to body	6
AV71	ZEB19371	Washer, shakeproof	6
		HARDWARE , securing bypass valve to carb body	
AV72	ZEB19225	Screw and Lock Washer Assembly	6

Plate No.	Part No.	Description	No. Off
GASKET SETS AND REBUILD KITS			
	ZEGP244	Gasket Pack	2
	ZEB18536	Emission Pack, 12,000 miles service	2
	ZEB18538	Emission Pack, 24,000 miles service	2
	ZEMS577A	Rebuild Kit, major	2
	RFK141	Throttle Shaft Kit, comprising throttle shafts for front and rear carbs and replacement bushes; order throttle shaft seals separately if required	1
COUPLING DETAILS (Not included with carburettor assemblies.)			
AV73	ZEB18310	Spindle Coupling Assembly	1
AV74	ZEO20059	FOLDED COUPLING ASSEMBLY	2
	ZEO19819	Coupling	2
	ZEO18667	Bolt	4
	ZEO18668	Washer, plain	4
	ZEO18669	Nut	4
MOUNTING DETAILS , carbs to intake manifold			
AV75	148035	Gasket	4
AV76	148036	Spacer	2
		HARDWARE , securing carbs to intake manifold	
AV77	132873	Stud	8
AV78	WL208	Washer, lock	8
AV79	HN2008	Nut	8
FUEL PIPES AND CONNECTING DETAILS			
AV80	138386	Fuel Pipe Assembly, connecting carb to pipe from fuel pump	1
		CONNECTIONS , carb pipe to pipe from fuel pump and carb pipe to carbs; alternative listings	
AV81	148992	Connection, rubber, black and yellow	3
	154144	Connection, rubber, green	3
	120331	Connection, rubber, black	3
CARBURETTOR IDENTIFICATION TAGS			
AV82	CNP55	Tag, metal, stamped C3150LH, for rear carb	1
AV83	CNP56	Tag, metal, stamped C3150RH, for front carb	1

CARBURETTORS, 1970 MODEL YEAR AND BEYOND

CARBURETTORS, 1970 MODEL YEAR AND BEYOND



CARBURETTORS, 1970 MODEL YEAR AND BEYOND

Plate No.	Part No.	Description	No. Off
		CARBURETTORS , fitted from engine no. CC50000 up to CC65346 approx. (Note possible overlap with next section.)	
ZEC3292LH		REAR CARBURETTOR ASSEMBLY , Zenith Stromberg model 175CD-2SE, with non-adjustable metering needle	1
ZEC3365LH		REAR CARBURETTOR ASSEMBLY , Zenith Stromberg model 175CD-2SE, with adjustable metering needle	1
311277R		Factory Rebuilt Unit , with adjustable metering needle	1
ZEC3292RH		FRONT CARBURETTOR ASSEMBLY , Zenith Stromberg model 175CD-2SE, with non-adjustable metering needle	1
ZEC3365RH		FRONT CARBURETTOR ASSEMBLY , Zenith Stromberg model 175CD-2SE, with adjustable metering needle	1
311276R		Factory Rebuilt Unit , with adjustable metering needle	1
		CARBURETTOR IDENTIFICATION CHECKLIST	
		• Metal tags attached to top cover screws should read C3292LH , C3365LH , C3292RH , or C3365RH .	
		• Metering needle is adjustable if hex-shaped holes to accept Allen-key adjustment wrench are visible down center of guide rod after dampers have been removed.	
		• Locate slanted pipes for attaching breather hoses on front sides of both carbs in close to manifold; these are the only breather connections.	
		• Locate fitting for installing suction pipe to distributor vacuum retard unit underneath rear carb on mounting flange.	
		• You should find a vacuum fitting on the upper side of the front carb on the mounting flange; this is for the suction pipe to the distributor vacuum advance unit; the corresponding hole in the rear carb is not drilled through to the throttle passage and may be plugged or left open.	
		• Bypass valves are identified by the letter K stamped onto the upper flanges; they are not adjustable; and they have no vacuum fittings.	
		• Identification characters stamped onto air cleaner faces should be 054 and 065 with the letters T and A or B as prefixes or suffixes in various combinations.	
		• Vent hole in air cleaner face does not have an inset brass bush. These carbs will not have a vent lever acting in conjunction with the throttle lever.	
		• Check cold start valves; cams will be stamped SRZ , and bodies will be marked AB .	
		• Plugs in bottoms of float chambers will be flat with single screw driver slots.	
		• Identifying individual model 175CD-2SE carbs can be tricky, and the surest method is to retain the metal identification tags.	

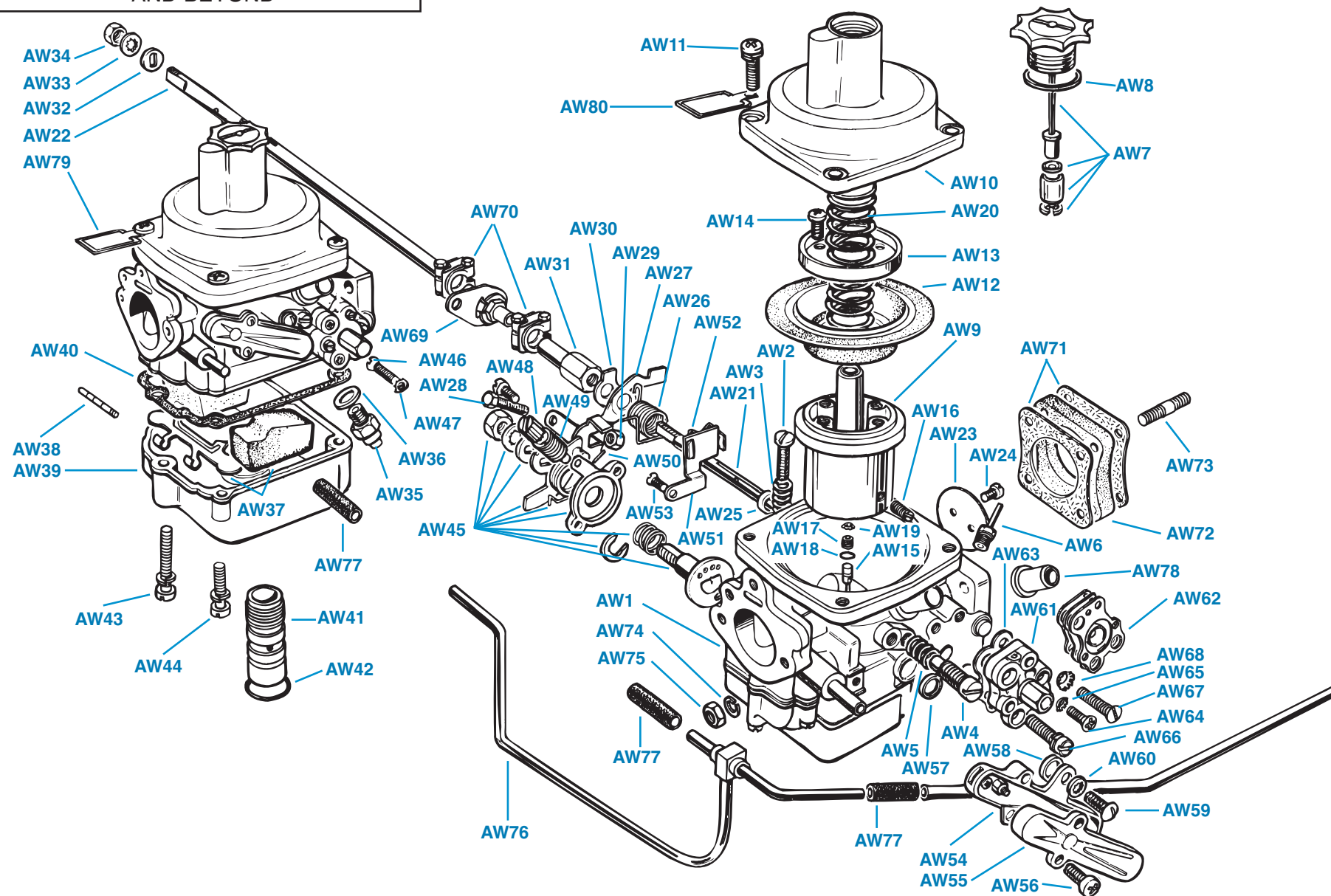
Plate No.	Part No.	Description	No. Off
		MAIN BODY DETAILS	
		Main Body Assembly	NSS
AW1		Screw , throttle stop	2
AW2	ZEO19532	Spring , throttle stop	2
AW3	ZEO19508	Screw , idler trimming	2
AW4	ZEB18479	Spring , idler trimming	2
AW5	ZEB18480	Adaptor , vacuum pipe to front carb, for connection to distributor vacuum advance	1
AW6	ZEB19548		
		SUCTION CHAMBER DETAILS	
AW7	ZEB18508	DAMPER ASSEMBLY , black plastic cap	2
	ZEB17632	Washer	2
	ZEO19640	Bushing	2
	ZEO19641	Ring , retaining	2
	ZEP5439	Gasket , damper	2
AW8		Air Valve and Guide Rod Assembly	NSS
AW9		Top Cover Assembly , suction chamber	NSS
AW10		Screw and Washer Assembly , securing top cover assembly	8
AW11	ZEO19654		
AW12	ZEB17421	Diaphragm	2
AW13	ZEO19870	Ring , diaphragm retaining	2
AW14	ZEB18008	Screw , securing diaphragm and retaining ring	8
		NEEDLE DETAILS , non-adjustable type	
	ZEB19699	Metering Needle , non-adjustable (Coded B.1AF.)	2
	ZEO19673	Screw , locking metering needle	2
		NEEDLE DETAILS , adjustable type	
AW15	ZEB20376	Metering Needle , adjustable (Coded B.1AF.)	2
AW16	ZEB20108	Screw , retaining, metering needle	2
AW17	ZEB20042	SCREW , adjusting metering needle	2
AW18	ZEO19657	"O" RING , oil sealing, adjusting screw	2
AW19	ZEB19995	Clip , spring, retaining adjusting screw	2
AW20	ZEB18277	Spring , air valve return	2
		THROTTLE DETAILS	
AW21	ZEB18230	Spindle , throttle, front carb	1
AW22	ZEB18119	Spindle , throttle, rear carb	1
AW23	ZEO19608	Disc , throttle	2
AW24	ZEO10351	Screw , securing throttle disc	4
AW25	ZEB18032	SEAL ASSEMBLY , throttle shaft	4
	517003/N	Seal , throttle shaft (neoprene part only)	4
AW26	ZEB17941	Spring , throttle return	2
AW27	ZEB18124	Lever , throttle stop and fast idle	2
AW28	ZEB17562	Screw , fast idle	2
AW29	ZEO19480	Nut , locking screw	2
AW30	ZEO19067	Washer , tab, front carb only	1
AW31	ZEB17337	Nut , extension, front carb only	1

(Continued on next page.)

PLATE AW

CARBURETTORS, 1970 MODEL YEAR
AND BEYOND

TRIUMPH TR6



CARBURETTORS, 1970 MODEL YEAR AND BEYOND

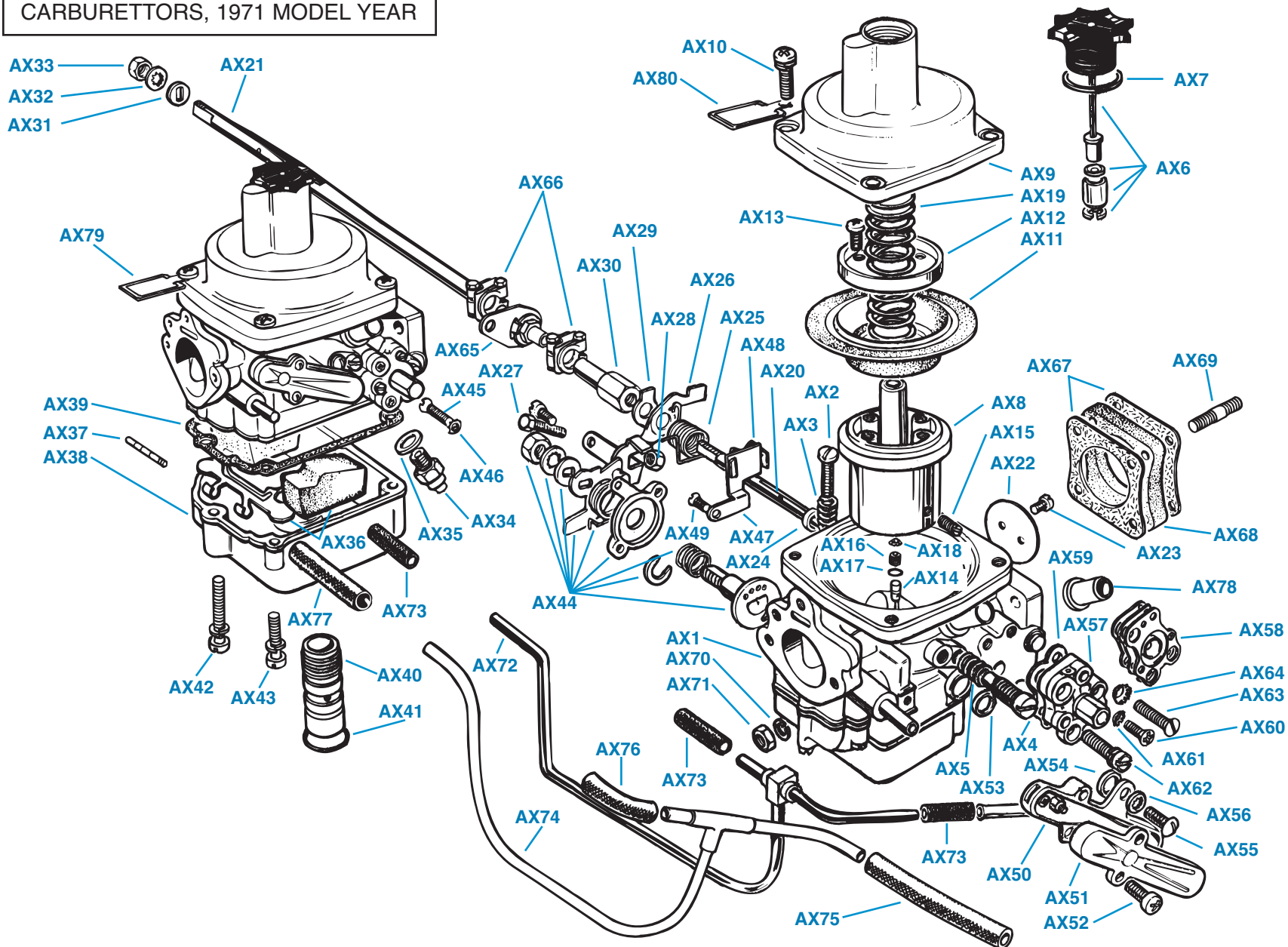
Plate No.	Part No.	Description	No. Off
THROTTLE DETAILS—Continued			
AW32	ZEO5660	Washer, spacing, rear carb only	2
AW33	ZEO8758	Washer, shakeproof, rear carb only	1
AW34	ZEL1475	Nut, rear carb only	1
FLOAT CHAMBER DETAILS			
	ZEB19053	NEEDLE VALVE PACK	2
AW35	ZEB18353	Needle Valve	2
AW36	ZEO9729	Washer, needle valve	2
AW37	ZEB19470	Float and Arm Assembly	2
AW38	ZEB18613	PIN, pivot, float assembly	2
AW39	ZEB16506	FLOAT CHAMBER	2
AW40	ZEB16518	GASKET, float chamber	2
AW41	ZEB179179	PLUG, sealing	2
AW42	ZEO19658	“O” Ring	2
AW43	ZEB19224	Screw and Lock Washer Assembly, long	8
AW44	ZEB19225	Screw and Lock Washer Assembly, short	4
STARTER (CHOKE) DETAILS			
AW45	ZEB19179	Cold Start Valve Assembly	2
AW46	ZEB17269	Screw, securing valve to carb body	4
AW47	ZEL1402	Washer, shakeproof	4
ADJUSTABLE STOP DETAILS			
AW48		Screw, cam lever stop	NSS
AW49		Spring, on screws	NSS
AW50		Pin, roll, security screws	NSS
AW51	ZEB17088	BRACKET ASSEMBLY, choke control cable	2
AW52		Clip, securing bracket to carb body	2
AW53	ZEB15346	Screw, securing bracket to carb body	2
TEMPERATURE COMPENSATOR DETAILS			
AW54	ZEB18681	TEMPERATURE COMPENSATOR ASSEMBLY	2
AW55	ZEB17933	Cover, plastic	2
AW56	ZEB18285	Screw, securing cover	4
AW57	ZEB17947	Washer, sealing, in carb counterbore	2
AW58	ZEB17946	Washer, sealing, between temperature compensator and carb body	2
AW59	ZEO9200	Screw, securing temperature compensator	4
AW60	ZEO7734	Washer, shakeproof, securing screws	4
BYPASS VALVE DETAILS			
AW61	ZEB20315	BYPASS VALVE ASSEMBLY, non-adjustable (No vacuum fitting.)	2
AW62	ZEBPV56	Diaphragm, bypass valve	2
AW63	ZEB18824	Gasket, bypass valve	2
AW64	ZEB18822	Screw, countersunk, fixing bypass cover to body	6
AW65	ZEB19371	Washer, shakeproof	6
HARDWARE, securing bypass valve to carb body			
AW66	ZEB19225	Screw and Lock Washer Assembly	4
AW67	ZEB18822	Screw, countersunk	2
AW68	ZEB19371	Washer, shakeproof	2

Plate No.	Part No.	Description	No. Off
GASKET SETS AND REBUILD KITS			
	ZEGP244	Gasket Pack	2
	ZEB19633	Emission Pack, 12,000 miles service	2
	ZEB21010	Emission Pack, 24,000 miles service	2
	ZEMS577A	Rebuild Kit, major	2
	RFK141	Throttle Shaft Kit, comprising throttle shafts for front and rear carbs and replacement bushes; order throttle shaft seals separately if required	1
COUPLING DETAILS (Not included with carburettor assemblies.)			
AW69	ZEB18310	Spindle Coupling Assembly	1
AW70	ZEO20059	FOLDED COUPLING ASSEMBLY	2
	ZEO19819	Coupling	2
	ZEO18667	Bolt	4
	ZEO18668	Washer, plain	4
	ZEO18669	Nut	4
MOUNTING DETAILS, carbs to intake manifold			
AW71	148035	Gasket	4
AW72	148036	Spacer	2
HARDWARE, securing carbs to intake manifold			
AW73	132873	Stud	8
AW74	WL208	Washer, lock	8
AW75	HN2008	Nut	8
FUEL PIPES AND CONNECTING DETAILS			
AW76	138386	Fuel Pipe Assembly, connecting carbs to pipe from fuel pump	1
CONNECTIONS, carb pipe to pipe from fuel pump and carb pipe to carbs; alternative listings			
AW77	148992	Connection, rubber, black and yellow	3
	154144	Connection, rubber, green	3
	120331	Connection, rubber, black	3
BREATHER HOSE CONNECTIONS			
AW78	154210	Adaptor (Restrictor), white plastic, breather hoses to front and rear carbs	2
CARBURETTOR IDENTIFICATION TAGS			
AW79	CNP57	Tag, metal, stamped C3365LH, for rear carb	1
AW80	CNP58	Tag, metal, stamped C3365RH, for front carb	1
	CNP59	Tag, metal, stamped C3292LH, for rear carb	1
	CNP60	Tag, metal, stamped C3292RH, for front carb	1

PLATE AX

CARBURETTORS, 1971 MODEL YEAR

TRIUMPH TR6



CARBURETTORS, 1971 MODEL YEAR

Plate No.	Part No.	Description	No. Off
		CARBURETTORS , fitted from engine no. CC58258 approx. up to CC75000 (Note possible overlap with previous section.)	
ZEC3385LH		REAR CARBURETTOR ASSEMBLY , Zenith Stromberg model 175CD-2SE	1
312130R		Factory Rebuilt Unit	1
ZEC3385RH		REAR CARBURETTOR ASSEMBLY , Zenith Stromberg model 175CD-2SE	1
311865R		Factory Rebuilt Unit	1
		CARBURETTOR IDENTIFICATION CHECKLIST	
		• Metal tags attached to top cover screws should read C3385LH and C3385RH .	
		• Locate slanted pipes for attaching breather hoses on front sides of both carbs in close to manifold; these are the only breather hose connections.	
		• Locate fitting for installing suction pipe underneath rear carb on mounting flange.	
		• There will be no vacuum fitting on top of inner mounting flange, as there are no vacuum advance units on the distributors fitted to this model range; if you find a threaded hole in that position, it will not be drilled through into the throttle passage, and you can plug it or leave it unplugged as you wish.	
		• Bypass valves were identified by the letter K stamped onto the upper flanges; they are not adjustable, and they have no vacuum fittings.	
		• Identification characters stamped onto air cleaner faces should be 065 and 089 with the letters TA and TB added as suffixes in various combinations.	
		• Vent hole in air cleaner face does not have brass bush.	
		• These carbs do not include a vent lever operating in conjunction with throttle lever.	
		• Check cold start valves: cams will be marked SRZ ; bodies will be marked AB .	
		• Plugs in bottoms of float chambers will be flat with a single screwdriver slot.	
		• Identifying individual model 175CD-2SE carbs can be tricky, and the surest way is to retain the metal identification tags.	
		MAIN BODY DETAILS	
		Main Body Assembly	NSS
AX1		Screw , throttle stop	2
AX2	ZEO19532	Spring , throttle stop	2
AX3	ZEO19508	Screw , idler trimming	2
AX4	ZEB18479	Spring , idler trimming	2
AX5	ZEB18480		
		SUCTION CHAMBER DETAILS	
AX6	ZEB18508	DAMPER ASSEMBLY , black plastic cap	2
	ZEB17632	Washer	2
	ZEO19640	Bushing	2
AX6	ZEO19641	Ring , retaining	2

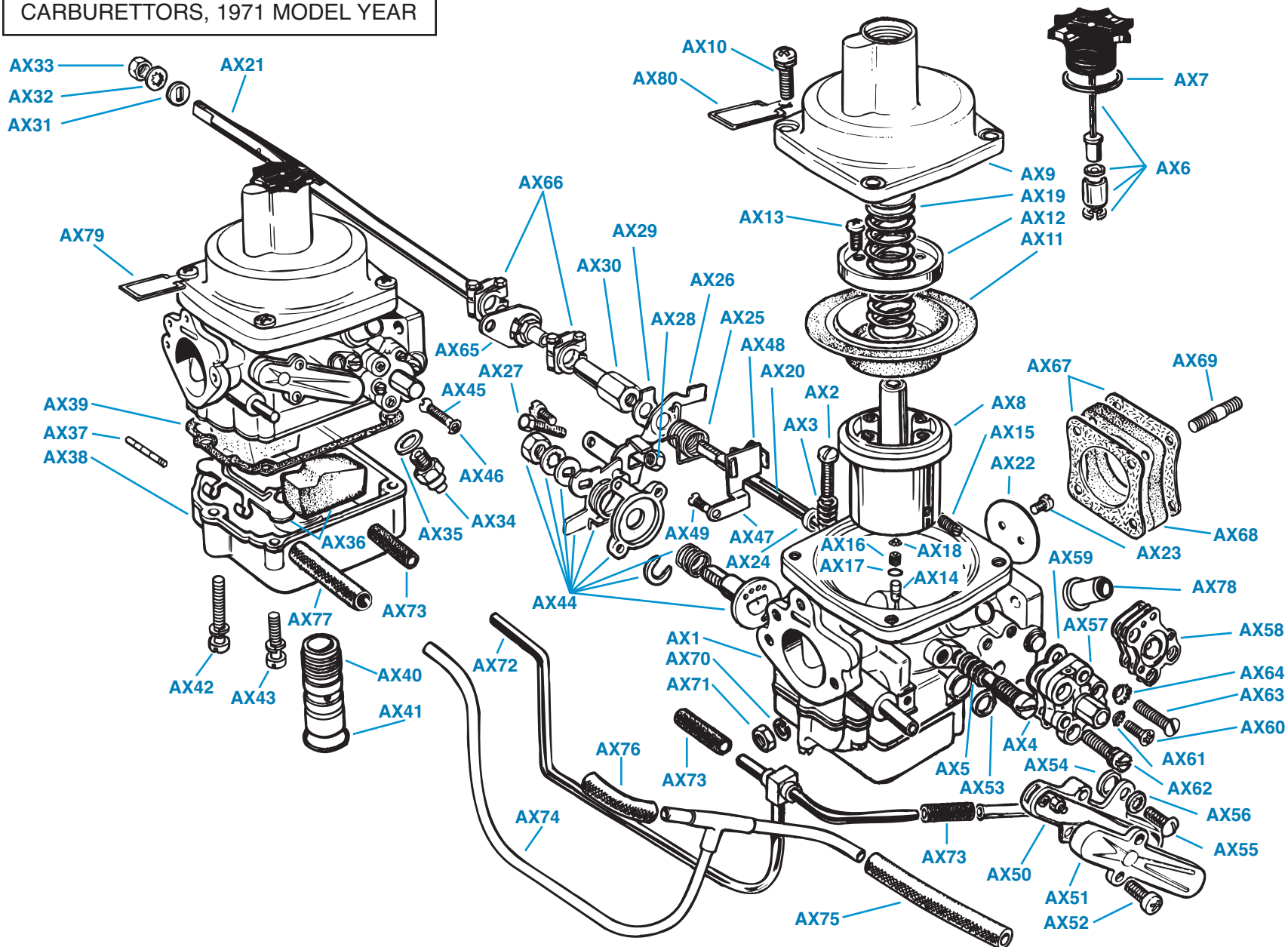
Plate No.	Part No.	Description	No. Off
		SUCTION CHAMBER DETAILS—Continued	
AX7	ZEP5439	Gasket , damper	2
AX8		Air Valve and Guide Rod Assembly	NSS
AX9		Top Cover Assembly , suction chamber	NSS
AX10	ZEO19654	Screw and Washer Assembly , securing top cover assembly	6
	ZEO18966	Screw and Washer Assembly , securing top cover assembly, drilled for locking wire.	2
AX11	ZEB17421	Diaphragm	2
AX12	ZEO19870	Ring diaphragm retaining ring	2
AX13	ZEB18008	Screw , securing diaphragm and retaining ring	8
AX14	ZEB20376	Metering Needle , adjustable (Coded B. 1AF)	2
AX15	ZEB20108	Screw , retaining metering needle	2
AX16	ZEB20042	SCREW , adjusting metering needle	2
AX17	ZEO19657	“O” Ring , oil sealing, adjusting screw	2
AX18	ZEB19995	Clip , spring, retaining adjusting screw	2
AX19	ZEB18277	Spring , air valve return	2
		THROTTLE DETAILS	
AX20	ZEB18230	Spindle , throttle, front carb	1
AX21	ZEB18119	Spindle , throttle rear, carb	1
AX22	ZEO19608	Disc , throttle	2
AX23	ZEO10351	Screw , securing throttle disc	4
AX24	ZEB18032	SEAL ASSEMBLY , throttle shaft	4
	517003/N	Seal , throttle shaft (neoprene part only)	4
AX25	ZEB17941	Spring , throttle return	2
AX26	ZEB18124	Lever , throttle stop and fast idle	2
AX27	ZEB17562	Screw , fast idle	2
AX28	ZEO19480	Nut , locking screw	2
AX29	ZEO19067	Washer , spacing, rear carb only	1
AX30	ZEB17337	Nut , extension front carb only	1
AX31	ZEO17337	Washer , spacing, rear carb only	2
AX32	ZEO8758	Washer , shakeproof, rear carb only	1
AX33	ZEL1475	Nut , rear carb only	1
		FLOAT CHAMBER DETAILS	
		NEEDLE VALVE PACK	
	ZEB19053	Needle Valve	2
AX34	ZEB18535	Washer , needle valve	2
AX35	ZEO9729	Float and Arm Assembly	2
AX36	ZEB19470	Pin , pivot, float assembly	2
AX37	ZEB18613	Float Chamber	2
AX38	ZEB16506	Gasket , float chamber	2
AX39	ZEB16518	PLUG , sealing	2
AX40	ZEB17916	“O” Ring	2
AX41	ZEO19658	Screw and Lock Washer Assembly , long, securing float chamber	8
AX42	ZEB19224	Screw and Lock Washer Assembly , short, securing float chamber	8
AX43	ZEB19225		

(Continued on next page.)

PLATE AX

CARBURETTORS, 1971 MODEL YEAR

TRIUMPH TR6



CARBURETTORS, 1971 MODEL YEAR

Plate No.	Part No.	Description	No. Off
		STARTER (CHOKE) DETAILS	
AX44	ZEB21050	Cold Start Valve Assembly	2
AX45	ZEB17269	Screw , securing valve to carb body	4
AX46	ZEL1402	Washer , shakeproof	4
AX47	ZEB17088	BRACKET ASSEMBLY , choke control cable	2
AX48	ZEB17626	Clip , securing outer choke cable	2
AX49	ZEB15346	Screw , securing bracket to carb body	2
		TEMPERATURE COMPENSATOR DETAILS	
AX50	ZEB19656	TEMPERATURE COMPENSATOR ASSEMBLY	2
AX51	ZEB17933	Cover , plastic	2
AX52	ZEB18285	Screw , securing cover	4
AX53	ZEB17947	Washer , sealing, in carb counterbore	2
AX54	ZEB17946	Washer , sealing, between temperature compensator and carb body	2
AX55	ZEO9200	Screw , securing temperature compensator	4
AX56	ZEO7734	Washer , shakeproof, securing screws	4
		BYPASS VALVE DETAILS	
AX57	ZEB20315	BYPASS VALVE ASSEMBLY , non-adjustable (No vacuum fitting)	2
AX58	ZEBPV56	Diaphragm , bypass valve	2
AX59	ZEB18824	Gasket , bypass valve	2
AX60	ZEB18821	Screw , countersunk, fixing bypass cover to body	6
AX61	ZEB19371	Washer , shakeproof	6
		HARDWARE , securing bypass valves to carb bodies	
AX62	ZEB19225	Screw and Lock Washer Assembly	4
AX63	ZEB18822	Screw , countersunk	2
AX64	ZEB19371	Washer , shakeproof	2
		GASKET SETS AND REBUILD KITS	
	ZEGP244	Gasket Pack	2
	ZEB19633	Emission Pack , 12,000 miles service	2
	ZEB21010	Emission Pack , 24,000 miles service	2
	ZEMS577A	Rebuild Kit , major	2
	RFK141	Throttle Shaft Kit , comprising throttle shafts for front and rear carbs and replacement bushes; order throttle-shaft seals separately if required	1
		COUPLING DETAILS (Not included with carburettor assemblies.)	
AX65	ZEB18310	Spindle Coupling Assembly	1
AX66	ZEO20059	FOLDED COUPLING ASSEMBLY	2
	ZEO19819	Coupling	2
	ZEO18667	Bolt	4
	ZEO18668	Washer , plain	4
	ZEO18669	Nut	4

Plate No.	Part No.	Description	No. Off
		MOUNTING DETAILS , carbs to intake manifold	
AX67	148035	Gasket	4
AX68	148036	Spacer	2
		HARDWARE , securing carbs to intake manifold	
AX69	132873	Stud	8
AX70	WL208	Washer , lock	8
AX71	HN2008	Nut	8
		FUEL PIPES AND CONNECTING DETAILS (Match your setup to illustration.)	
		FUEL PIPES AND CONNECTING DETAILS , earlier type	
AX72	138386	Fuel Pipe Assembly , connecting carbs to pipe from fuel pump	1
		CONNECTIONS , carb pipe to pipe from fuel pump and carb pipe to carbs; alternative listings	
AX73	148992	Connection , black and yellow	3
	154144	Connection , green	3
	120331	Connection , black	3
		FUEL PIPES AND CONNECTING DETAILS , later type	
AX74	217494	Fuel Pipe Assembly , connecting carbs to pipe from fuel pump	1
AX75	125170	Connection , rubber, carb pipe to pipe from fuel pump	1
AX76	154124	Connection , elbow, rubber, carb pipe to front carb	1
AX77	120331	Connection , rubber, carb pipe to rear carb	1
		BREATHER HOSE CONNECTIONS	
AX78	154210	Adaptor (Restrictor) , white plastic, breather hose to front and rear carbs	2
		CARBURETTOR IDENTIFICATION TAGS	
AX79	CNP63	Tag , metal, stamped C3385LH , for rear carb	1
AX80	CNP64	Tag , metal, stamped C3385RH , for front carb	1

CARBURETTORS, 1972 MODEL YEAR

CARBURETTORS, 1972 MODEL YEAR

This technical diagram illustrates the exploded view of a carburetor assembly, showing the relationship between 79 individual components. The parts are labeled with alphanumeric codes from AY1 to AY79. The assembly includes a main carburetor body (AY1), a float valve assembly (AY7, AY6), a float bowl (AY11), a throttle cable linkage (AY21, AY66), and various internal jets and passages (AY14, AY16, AY17, AY18). The diagram also shows the fuel inlet (AY72) and the throttle cable (AY73). The components are arranged in a way that shows their relative positions and how they fit together.

CARBURETTORS, 1972 MODEL YEAR

Plate No.	Part No.	Description	No. Off
		CARBURETTORS , fitted from engine no. CC75000 up to CF1	
	ZEC3337LH	REAR CARBURETTOR ASSEMBLY , Zenith Stromberg model 175CD-2SE	1
	312207R	Factory Rebuilt Unit	1
	ZEC3337RH	FRONT CARBURETTOR ASSEMBLY , Zenith Stromberg model 175CD-2SE	1
	312206R	Factory Rebuilt Unit	1
		CARBURETTOR IDENTIFICATION CHECKLIST	
		• Metal tags attached to top cover screws should read C3337LH and C3337RH .	
		• Locate slanted pipes for attaching breather hoses on front sides of both carbs in close to manifold; these are the only breather hose connections.	
		• Locate fitting for installing suction pipe underneath rear carb on mounting flange.	
		• There will be no vacuum fitting on top of inner mounting flange; if you find a threaded hole in that position, it will not be drilled through into the throttle passage, and you can plug it or leave it unplugged as you wish.	
		• There are no vacuum fittings on tops of bypass valves.	
		• Our experience is that bypass valves are not adjustable, although the Zenith Stromberg parts breakdown lists the same part number as for the 1973 carbs which is adjustable.	
		• Identification characters stamped on air cleaner faces should be 089TA and 065TA ; sometimes the suffix letter is B rather than A .	
		• Vent hole in air cleaner face does not have an inset brass bush.	
		• These carbs do not include a vent lever operating in conjunction with throttle lever.	
		• Check cold start valves; cams will be stamped SRZ , and bodies will be marked AB .	
		• Identifying individual model 175CD-2SE carbs can be tricky, and the surest way is to retain the metal identification tags.	
		MAIN BODY DETAILS	
AY1		Main Body Assembly	NSS
AY2	ZEO19532	Screw , throttle stop	2
AY3	ZEO19508	Spring , throttle stop	2
AY4	ZEB18479	Screw , idler trimming	2
AY5	ZEB18480	Spring , idler trimming	2
		SUCTION CHAMBER DETAILS	
AY6	ZEB18508	DAMPER ASSEMBLY , black plastic cap	2
	ZEB17632	Washer	2
	ZEO19640	Bushing	2
	ZEO19641	Ring , retaining	2
AY7	ZEP5439	Gasket , damper	2
AY8		Air Valve and Guide Rod Assembly	NSS
AY9		Top Cover Assembly , suction chamber	NSS

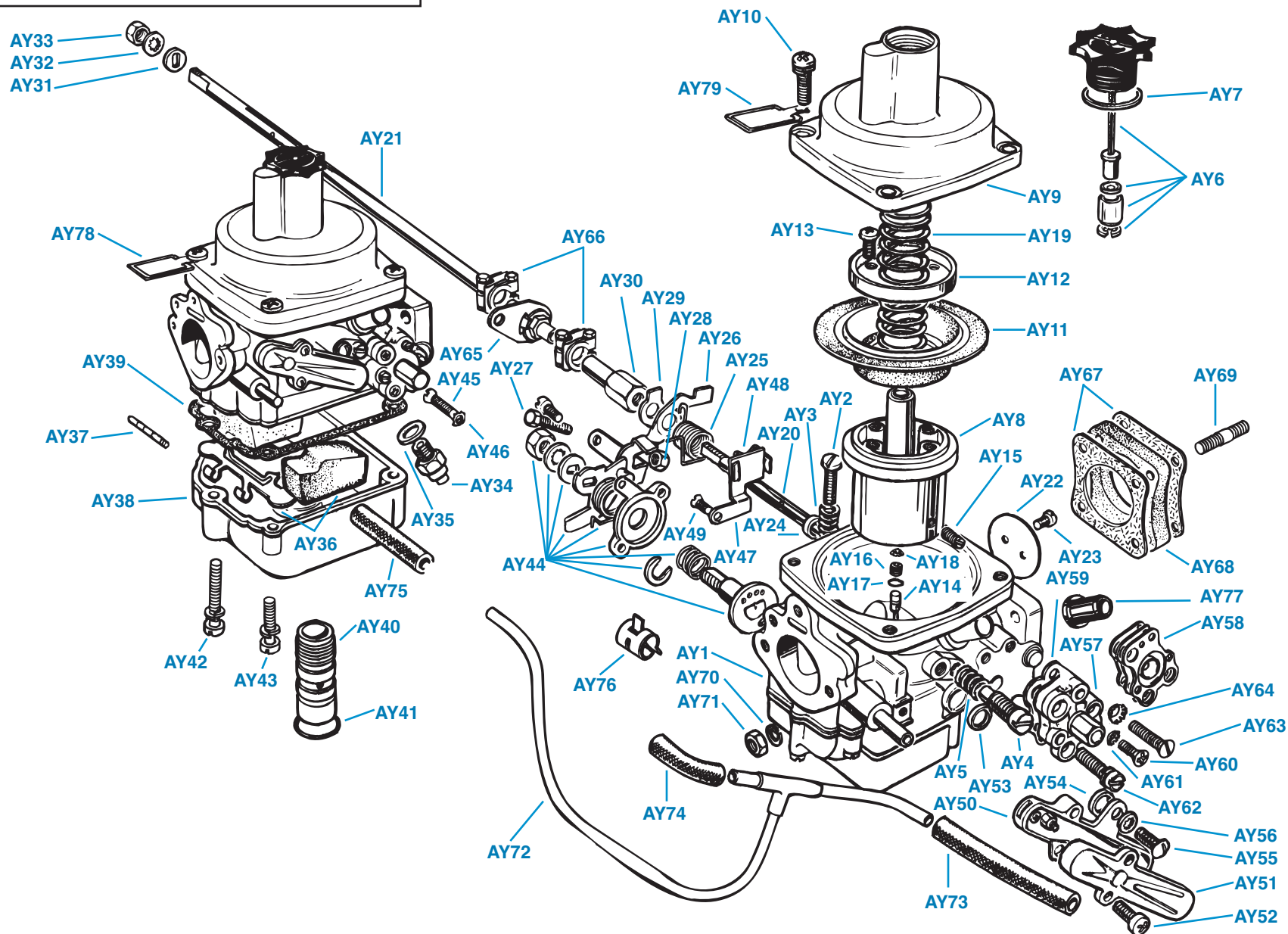
Plate No.	Part No.	Description	No. Off
		SUCTION CHAMBER DETAILS—Continued	
AY10	ZEO19654	Screw and Washer Assembly , securing top cover and arm assembly	2
AY11	ZEB17421	Diaphragm	2
AY12	ZEO19870	Ring , diaphragm retaining	2
AY13	ZEB18008	Screw , securing diaphragm and retaining ring	8
AY14	ZEB20376	Metering Needle , adjustable (Coded B, 1AF.)	2
AY15	ZEB20108	Screw , retaining, metering needle	2
AY16	ZEB20042	Screw , adjusting, metering needle	2
AY17	ZEO19657	“O” ring , oil sealing, adjusting screw	2
AY18	ZEB19995	Clip , spring, retaining adjusting screw	2
AY19	ZEB18277	Spring , air valve return	2
		THROTTLE DETAILS	
AY20	ZEB18230	Spindle , front carb	1
AY21	ZEB18119	Spindle , throttle, rear carb	1
AY22	ZEO19608	Disc , throttle	2
AY23	ZEO10351	Screw , securing throttle disc	4
AY24	ZEB18032	SEAL ASSEMBLY , throttle shaft	4
	517003/N	Seal , throttle shaft (neoprene part only)	4
AY25	ZEB17941	Spring , throttle return	2
AY26	ZEB18124	Lever , throttle stop and fast idle	2
AY27	ZEB17562	SCREW , fast idle	2
AY28	ZEO19480	Nut , locking screw	2
AY29	ZEO19067	Washer , tab, front carb only	1
AY30	ZEB17337	Nut , extension, front carb only	1
AY31	ZEO5660	Washer , spacing, rear carb only	2
AY32	ZEO8758	Washer , shakeproof, rear carb only	1
AY33	ZEL1475	Nut , rear carb only	1
		FLOAT CHAMBER DETAILS	
		NEEDLE VALVE	2
		Washer , needle valve	2
		Float and Arm Assembly	2
		Pin , pivot, float assembly	2
		Float Chamber	2
		Gasket , float chamber	2
		PLUG , sealing	2
		“O” Ring	2
		Screw and Lock Washer Assembly , long, securing float chamber	8
AY43	ZEB19225	Screw and Lock Washer Assembly , short, securing float chamber	4

(Continued on next page.)

PLATE AY

CARBURETTORS, 1972 MODEL YEAR

TRIUMPH TR6



CARBURETTORS, 1972 MODEL YEAR

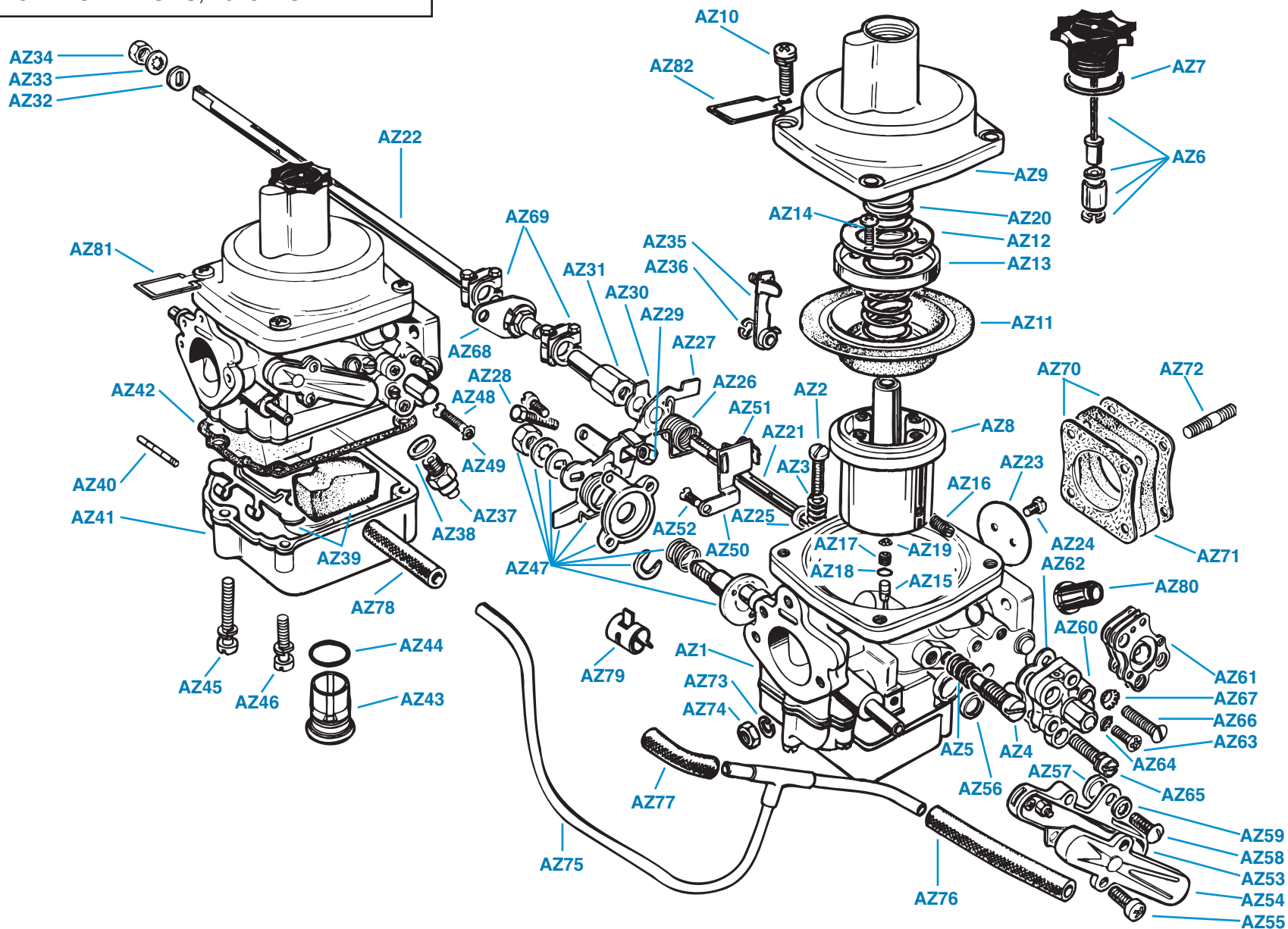
Plate No.	Part No.	Description	No. Off
STARTER (CHOKE) DETAILS			
AY44	ZEB21050	Cold Start Valve Assembly	2
AY45	ZEB17269	Screw , securing valve to carb body	4
AY46	ZEL1402	Washer , shakeproof	4
AY47	ZEB17088	BRACKET ASSEMBLY , choke control cable	2
AY48	ZEB17626	Clip , securing outer choke cable	2
AY49	ZEB15346	Screw , securing bracket to carb body	2
TEMPERATURE COMPENSATOR DETAILS			
AY50	ZEB19656	TEMPERATURE COMPENSATOR ASSEMBLY	2
AY51	ZEB17933	Cover , plastic	2
AY52	ZEB18285	Screw , securing cover	4
AY53	ZEB17947	Washer , sealing, in carb counterbore	2
AY54	ZEB17946	Washer , sealing, between temperature compensator and carb body	2
AY55	ZEO9200	Screw , securing temperature compensator	4
AY56	ZEO7734	Washer , shakeproof, securing screws	4
BYPASS VALVE DETAILS			
AY57	ZEB20209	BYPASS VALVE ASSEMBLY , non-adjustable (No vacuum fitting.), with N stamped on edge.	2
AY58	ZEBPV56	Diaphragm , bypass valve	2
AY59	ZEB18824	Gasket , bypass valve	2
AY60	ZEB18821	Screw , countersunk, fixing bypass cover to body	6
AY61	ZEB19371	Washer , shakeproof	6
		HARDWARE , securing bypass valve to carb body	
AY62	ZEB19225	Screw and Lock Washer Assembly	4
AY63	ZEB18821	Screw , countersunk, fixing bypass cover to body	2
AY64	ZEB19371	Washer , shakeproof	2
GASKET SETS AND REBUILD KITS			
	ZEGP244	Gasket Pack	2
	ZEB19633	Emission Pack , 12,000 miles service	2
	ZEB21010	Emission Pack , 24,000 miles service	2
	ZEMS577A	Rebuild Kit , major	2
	RFK141	Throttle Shaft Kit , comprising throttle shafts for front and rear carbs and replacement bushes; order throttle shaft seals separately if required	1
COUPLING DETAILS (Not included with carburettor assemblies.)			
AY65	ZEB18310	Spindle Coupling Assembly	1
AY66	ZEO20059	FOLDED COUPLING ASSEMBLY	2
	ZEO19819	Coupling	2
	ZEO18667	Bolt	4
	ZEO18668	Washer , plain	4
	ZEO18669	Nut	4

Plate No.	Part No.	Description	No. Off
MOUNTING DETAILS , carbs to intake manifold			
AY67	ZEO148035	Gasket	4
AY68	ZEO148036	Spacer	2
HARDWARE , securing carbs to intake manifold			
AY69	132873	Stud	8
AY70	WL208	Washer , lock	8
AY71	HN2008	Nut	8
FUEL PIPES AND CONNECTING DETAILS			
AY72	217494	Fuel Pipe Assembly , connecting carbs to pipe from fuel pump	1
AY73	145735	Connection , rubber, carb pipe to pipe from fuel pump	1
AY74	154124	Connection , elbow, rubber, carb pipe to front carb	1
AY75	120331	Connection , rubber, carb pipe to rear carb	1
AY76	UKC3794	Clip , hose, securing fuel line connections (Not originally fitted to this model range).	A/R
BREATHER HOSE CONNECTIONS			
AY77	155148	Adaptor , black plastic, breather hoses to front and rear carbs	2
CARBURETTOR IDENTIFICATION TAG			
AY78	CNP65	Tag , metal, stamped C3337LH , for rear carb	1
AY79	CNP66	Tag , metal, stamped C3337RH , for front carb	1

PLATE AZ

CARBURETTORS, 1973 MODEL YEAR

TRIUMPH TR6



CARBURETTORS, 1973 MODEL YEAR

Plate No.	Part No.	Description	No. Off
		CARBURETTORS , fitted from eng. no. CF1 up to CF12500	
	ZEC3508LH	REAR CARBURETTOR ASSEMBLY , Zenith Stromberg model 175CD-SEV	1
	313238R	Factory Rebuilt Unit	1
	ZEC3508RH	FRONT CARBURETTOR ASSEMBLY , Zenith Stromberg model 175CD-SEV	1
	313237R	Factory Rebuilt Unit	1
		CARBURETTOR IDENTIFICATION CHECKLIST	
		• Metal tags attached to top cover screws should read C3508LH and C3508RH .	
		• Locate slanted pipes for attaching breather hoses on front sides of both carbs in close to manifold.	
		• Locate horizontal breather attachment pipes on rear sides of both carbs close to air cleaner faces.	
		• Locate fitting for installing suction pipe underneath rear carb on mounting flange.	
		• There will be no vacuum fittings on top of inner mounting flange.	
		• There are no vacuum fittings on bypass valves.	
		• Bypass valves are adjustable as indicated by small adjusting screws in centers.	
		• Identification characters stamped on air cleaner faces should be T436A and T437A .	
		• Locate brass-bushed vent hole in air cleaner face.	
		• Check cold start valves; cams will be stamped SRZ , and bodies will be marked AB .	
		• Locate vent levers on rear sides of carbs (Plate No. AZ35); lever will be made of stamped steel rather than die-cast as on later carbs.	
		• These carbs are easily identified by the above checklist, but the surest way is to retain the identification tags.	
		MAIN BODY DETAILS	
AZ1		Main Body Assembly	NSS
AZ2	ZEO19532	Screw , throttle stop	2
AZ3	ZEO19508	Spring , throttle stop	2
AZ4	ZEB18479	Screw , idler trimming	2
AZ5	ZEB18480	Spring , idler trimming	2
		SUCTION CHAMBER DETAILS	
AZ6	ZEB18508	DAMPER ASSEMBLY	2
	ZEB17632	Washer	2
	ZEO19640	Bushing	2
	ZEO19641	Ring , retaining	2
AZ7	ZEP5439	Gasket , damper	2
AZ8		Air Valve and Guide Rod Assembly	NSS
AZ9		Top Cover Assembly , suction chamber	NSS
AZ10	ZEO19654	Screw and Washer Assembly , securing top cover assembly	8
AZ11	ZEB19420	Diaphragm	2

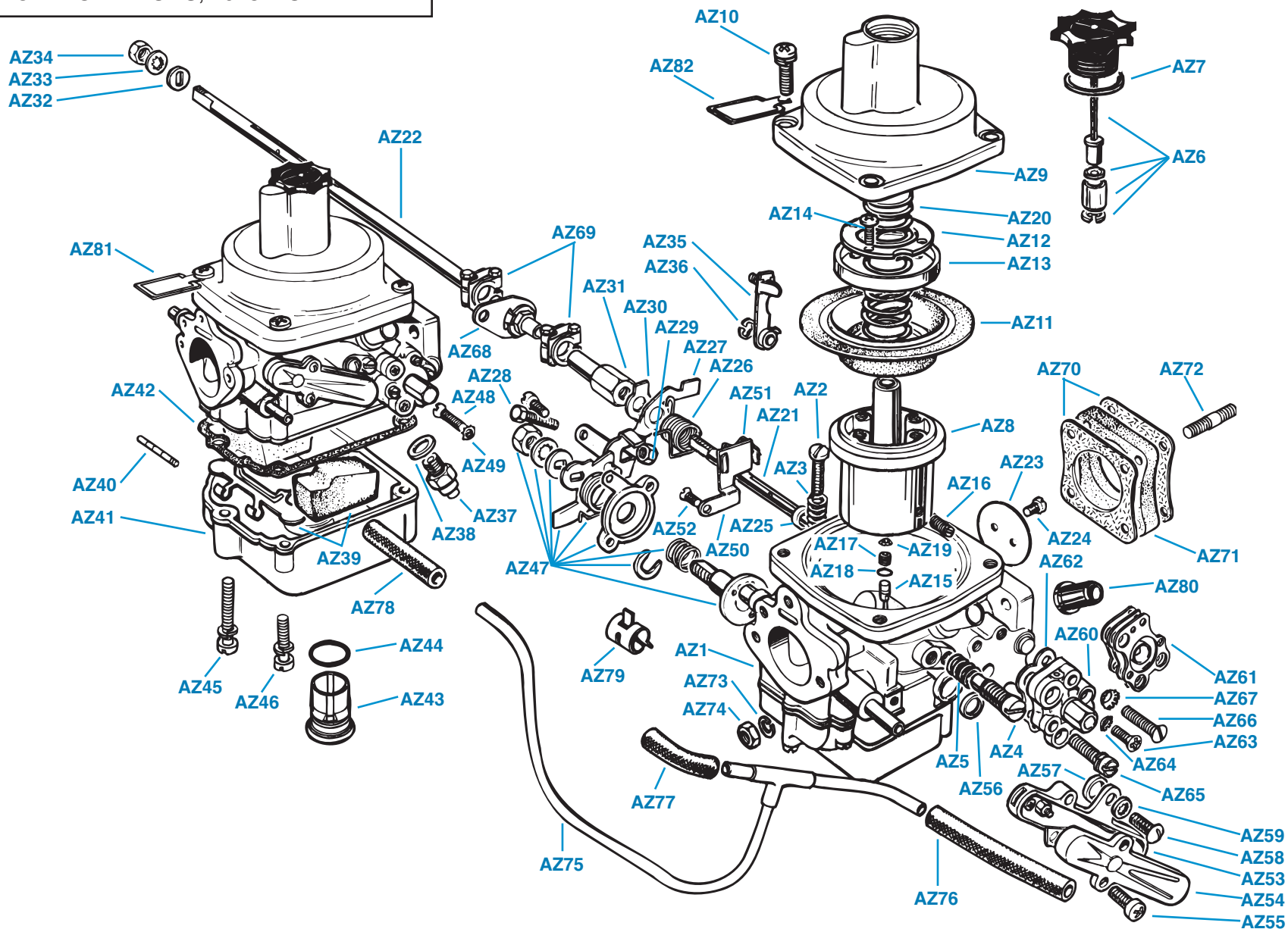
Plate No.	Part No.	Description	No. Off
		FLOAT CHAMBER DETAILS	
AZ12	ZEB17385	Washer , retaining	2
AZ13	ZEB17386	Ring , sealing, diaphragm	2
AZ14	ZEB18008	Screw , retaining metering needle	8
AZ15	ZEB20376	Metering Needle , adjusting, metering needle	2
AZ16	ZEB20108	Screw , retaining, metering needle	2
AZ17	ZEB20042	SCREW , adjusting, metering needle	2
AZ18	ZEO19657	"O" Ring	2
AZ19	ZEB19995	Clip , spring, retaining adjusting screw	2
AZ20	ZEB18277	Spring , air valve return	2
		THROTTLE DETAILS	
AZ21	ZEB18230	Spindle , throttle front carb	1
AZ22	ZEB18119	Spindle , throttle, rear carb	1
AZ23	ZEO19608	Disc , throttle	2
AZ24	ZEO10351	Screw , securing throttle disc	4
AZ25	ZEB18032	SEAL ASSEMBLY , throttle shaft	4
	517003/N	Seal , throttle shaft (neoprene part only)	4
AZ26	ZEB17941	Spring , throttle return	2
AZ27	ZEB22446	Lever , throttle stop and fast idle	2
AZ28	ZEB17562	Screw , fast idle	2
AZ29	ZEO19480	Nut , locking screw	2
AZ30	ZEO19067	Washer , tab, front carb only	1
AZ31	ZEB17337	Nut , extension, front carb only	1
AZ32	ZEO5660	Washer , spacing, rear carb only	2
AZ33	ZEO8758	Washer , shakeproof, rear carb only	1
AZ34	ZEL1475	Nut , rear carb only	1
		VENT LEVER DETAILS	
AZ35	ZEB21909	Vent Lever and Adjusting Screw Assembly	2
AZ36	ZEB18788	Circlip , retaining, vent lever on shaft	2
		FLOAT CHAMBER DETAILS	
AZ37	ZEB19053	Needle Valve	2
AZ38	ZEO9729	Washer , needle valve	2
AZ39	ZEB19470	Float and Arm Assembly	2
AZ40	ZEB18613	Pin, pivot, float assembly	2
AZ41	ZEB16506	Float Chamber	2
AZ42	ZEB16518	Gasket , float chamber	2
AZ43	ZEB20767	PLUG , sealing	2
AZ44	ZEO19658	"O" Ring	2
AZ45	ZEB19224	Screw and Lock Washer Assembly , long, securing float chamber	8
AZ46	ZEB19225	Screw and Lock Washer Assembly , short, securing float chamber	4

(Continued on next page.)

PLATE AZ

CARBURETTORS, 1973 MODEL YEAR

TRIUMPH TR6



CARBURETTORS, 1973 MODEL YEAR

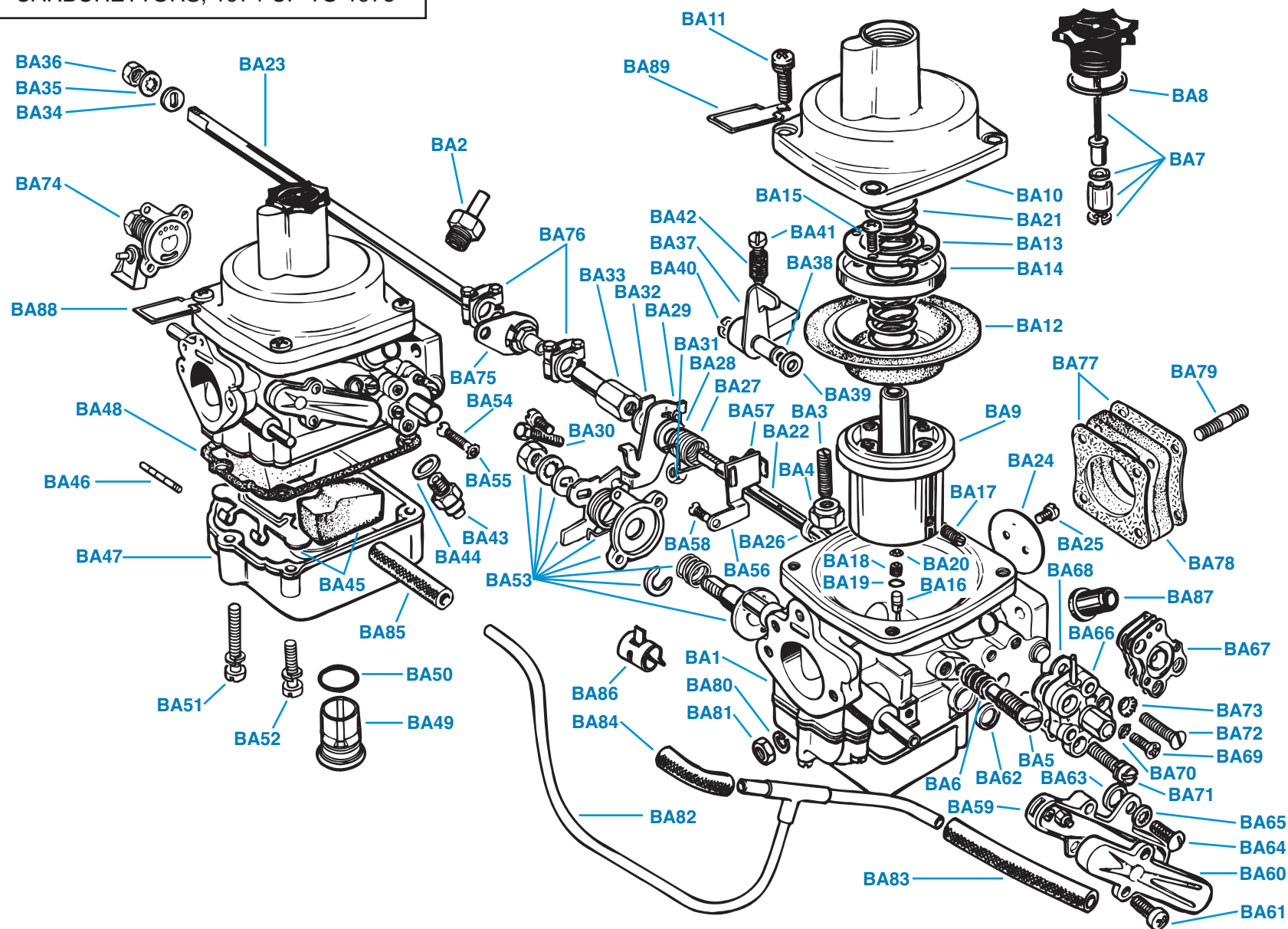
Plate No.	Part No.	Description	No. Off
STARTER (CHOKE) DETAILS			
AZ47	ZEB21050	Cold Start Valve Assembly	2
AZ48	ZEB17269	Screw , securing valve to carb body	4
AZ49	ZEL1402	Washer , shakeproof	4
AZ50	ZEB22931	BRACKET ASSEMBLY , choke control cable	2
AZ51	ZEB18689	Clip , securing outer choke cable	2
AZ52	ZEB15346	Screw , securing bracket to carb body	2
TEMPERATURE COMPENSATOR DETAILS			
AZ53	ZEB19656	TEMPERATURE COMPENSATOR ASSEMBLY	2
AZ54	ZEB17933	Cover , plastic	2
AZ55	ZEB18285	Screw , securing cover	4
AZ56	ZEB17947	Washer , sealing, in carb counterbore	2
AZ57	ZEB17946	Washer , sealing, between temperature compensator and carb body	2
AZ58	ZEO9200	Screw , securing temperature compensator	4
AZ59	ZEO7734	Washer , shakeproof, securing screws	4
BYPASS VALVE DETAILS			
AZ60	ZEB20209	BYPASS VALVE ASSEMBLY , adjustable (No vacuum fitting.)	2
AZ61	ZEBPV56	Diaphragm , bypass valve	2
AZ62	ZEB18824	Gasket , bypass valve	2
AZ63	ZEB18821	Screw , fixing bypass cover to body	6
AZ64	ZEB19371	Washer , shakeproof	6
		HARDWARE , securing bypass valve to carb body	
AZ65	ZEB19225	Screw and Lock Washer Assembly	4
AZ66	ZEB18822	Screw , countersunk	2
AZ67	ZEB19371	Washer , shakeproof	2
GASKET SETS AND REBUILD KITS			
	ZEGP244	Gasket Pack	2
	ZEB19633	Emission Pack , 12,000 miles service	2
	ZEB19987	Emission Pack , 24,000 miles service	2
	ZEMS577A	Rebuild Kit , major	2
	RFK141	Throttle Shaft Kit , comprising throttle shafts for front and rear carbs and replacement bushes; order throttle shaft seals separately if required	1
COUPLING DETAILS (Not included with carburettor assemblies.)			
AZ68	ZEB18310	Spindle Coupling Assembly	1
AZ69	ZEO20059	FOLDED COUPLING ASSEMBLY	2
	ZEO19819	Coupling	2
	ZEO18667	Bolt	4
	ZEO18668	Washer , plain	4
	ZEO18669	Nut	4

Plate No.	Part No.	Description	No. Off
MOUNTING DETAILS , carburettors to intake manifold			
AZ70	148035	Gasket	4
AZ71	148036	Spacer	2
HARDWARE , securing carbs to intake manifold			
AZ72	132873	Stud	8
AZ73	WL208	Washer , lock	8
AZ74	HN2008	Nut	8
FUEL PIPES AND CONNECTING DETAILS			
AZ75	217494	Fuel Pipe Assembly , connecting carbs to pipe from fuel pump	1
AZ76	145735	Connection , rubber, carb pipe to pipe from fuel pump	1
AZ77	154124	Connection , elbow, rubber, carb pipe to front carb	1
AZ78	120331	Connection , rubber, carb pipe to rear carb	1
AZ79	UKC3794	Clip , hose, securing fuel line connections (Not originally fitted to this model range.)	A/R
BREATHER HOSE ATTACHMENTS			
AZ80	155148	Adaptor , plastic, black, breather hoses to front and rear carbs	2
CARBURETTOR IDENTIFICATION TAGS			
AZ81	CNP67	Tag , metal, stamped C3508LH, for rear carb	1
AZ82	CNP68	Tag , metal, stamped C3508RH, for front carb	1

PLATE BA

CARBURETTORS, 1974 UP TO 1975

TRIUMPH TR6



CARBURETTORS, 1974 UP TO 1975

Plate No.	Part No.	Description	No. Off
		CARBURETTORS , fitted from eng. no. CF12500 up to CF35000	
	ZEC3613LH	REAR CARBURETTOR ASSEMBLY , Zenith Stromberg	1
		model 175CD-SEVX	
	RKC465R	Factory Rebuilt Unit	1
	ZEC3613RH	FRONT CARBURETTOR ASSEMBLY , Zenith Stromberg	1
		model 175CD-SEVX	
	RKC466R	Factory Rebuilt Unit	1
		CARBURETTOR IDENTIFICATION CHECKLIST	
		• Metal tags attached to top cover screws should read C3613LH or C3613RH .	
		• Locate E.G.R. operating valve and bracket assembly mounted under the cold start valve on the rear carb.	
		• Locate slanted pipes for attaching breather hoses on front sides of both carbs in close to manifold.	
		• Locate horizontal breather attachment pipes on rear sides of both carbs close to air cleaner faces.	
		• Locate vacuum fitting (copper pipe) on underside of front carb near center of mounting flange.	
		• Locate screw-in vacuum fitting on upper side of rear carb near center of mounting flange.	
		• Locate vacuum fittings on tops of bypass valves.	
		• Bypass valves are adjustable as indicated by small adjusting screws in centers.	
		• Identification characters stamped on air cleaner faces should be T224 and T225 with suffix letters A or B . The prefix letter is sometimes omitted or moves to a suffix position.	
		• Check cold start valves; cams will be stamped SRZ , and bodies should be marked A3 and sometimes B4 .	
		• Locate vent levers on rear sides of carbs (Plate No. BA37); lever should be made of die-cast metal rather than steel.	
		• These carbs are easy to identify, as they are the only TR6 carbs with the E.G.R. operating valve, but the surest way to identify your carbs is to retain the identification tags.	
		MAIN BODY DETAILS	
BA1		Main Body Assembly	NSS
BA2	ZEB20254	Adaptor , vacuum connection, rear carb, top	1
BA3	ZEB20365	Screw , stop, vent lever	2
BA4	ZEB20366	Nut , locking screw	2
BA5	ZEB18479	Screw , idler trimming	2
BA6	ZEB18480	Spring , idler trimming	2

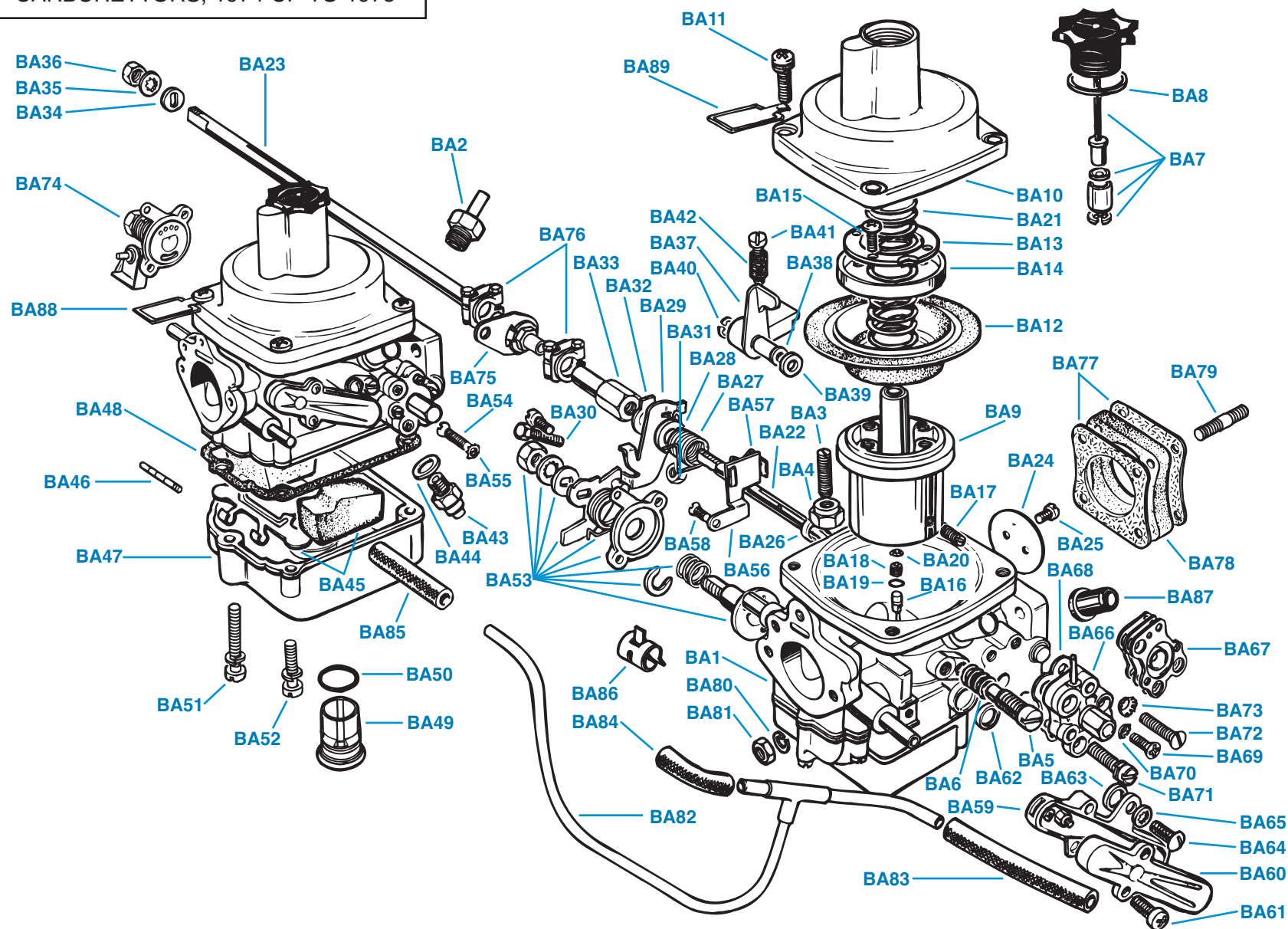
Plate No.	Part No.	Description	No. Off
		SUCTION CHAMBER DETAILS	
		DAMPER ASSEMBLY	2
BA7	ZEB18508	Washer	2
	ZEB17632	Bushing	2
	ZEO19640	Ring , retaining	2
	ZEO19641	Ring , retaining	2
BA8	ZEP5439	Gasket , damper	2
BA9		Air Valve and Guide Rod Assembly	NSS
BA10		Top Cover Assembly , suction chamber	NSS
BA11	ZEO19654	Screw and Washer Assembly , securing top cover assembly.	8
		Diaphragm	2
BA12	ZEB19420	Washer , retaining	2
BA13	ZEB17385	RING , sealing Diaphragm	2
BA14	ZEB17386	Screw , securing diaphragm and retainers	8
BA15	ZEB18001	Metering Needle , adjustable (Coded B.1AF)	2
BA16	ZEB20376	Screw , retaining, metering needle	2
BA17	ZEB20108	SCREW , adjusting, metering needle	2
BA18	ZEB20042	"O" Ring , oil sealing, adjusting screw	2
BA19	ZEO19657	Clip , spring, retaining adjusting screw	2
BA20	ZEB19995	Spring , air valve return	2
BA21	ZEB18277		
		THROTTLE DETAILS	
BA22	ZEB18230	Spindle , throttle, front carb	1
BA23	ZEB18119	Spindle , throttle rear carb	1
BA24	ZEO19608	Disc , throttle	2
BA25	ZEO10351	Screw , securing throttle disc	4
BA26	ZEB18032	SEAL ASSEMBLY , throttle shaft	4
	517003/N	Seal , throttle shaft (neoprene part only)	4
BA27	ZEB23312	Spring , throttle return	2
BA28	ZEO6442	WASHER	2
BA29	ZEB22988	Lever , throttle, front carb	2
BA30	ZEO19531	Lever , throttle, rear carb	2
BA31	ZEO19480	Nut , locking screw	2
BA32	ZEO19067	Washer , tab, front carb only	1
BA33	ZEB17337	Nut , extension, front carb only	1
BA34	ZEO5660	Washer , spacing rear carb only	2
BA35	ZEO8758	Washer , shakeproof, rear carb only	1
BA36	ZEL1475	Nut , rear carb only	1
		VENT LEVER DETAILS	
BA37	ZEB22987	Lever , vent	2
BA38	ZEB22991	Liner	2
BA39	ZEB23086	Washer , spacing	2
BA40	ZEB18788	Ring , retaining	2
BA41	ZEO20363	Screw , throttle stop	2
BA42	ZEO15458	Spring , throttle stop	2

(Continued on next page.)

PLATE BA

CARBURETTORS, 1974 UP TO 1975

TRIUMPH TR6



CARBURETTORS, 1974 UP TO 1975

Plate No.	Part No.	Description	No. Off
FLOAT CHAMBER DETAILS			
BA43	ZEB20747	Needle Valve	2
BA44	ZEO9729	Washer , needle valve	2
BA45	ZEB19470	Float and Arm Assembly	2
BA46	ZEB18613	Pin , pivot, float assembly	2
BA47	ZEB16506	Float Chamber	2
BA48	ZEB16518	Gasket , float chamber	2
BA49	ZEB20767	PLUG , sealing	2
BA50	ZEO19658	"O" Ring	2
BA51	ZEB19224	Screw and Lock Washer Assembly , long, securing float chamber	8
BA52	ZEB19225	Screw and Lock Washer Assembly , short, securing float chamber	4
STARTER (CHOKE) DETAILS			
BA53	ZEB23397	Cold Start Valve Assembly , front carb	1
	ZEB23281	Cold Start Valve Assembly , rear carb	1
BA54	ZEB17269	Screw , securing valve to carb body	4
BA55	ZEL1402	Washer , shakeproof	4
BA56	ZEB22931	BRACKET ASSEMBLY , choke control cable, front carb only	1
	ZEB17088	BRACKET ASSEMBLY , choke control cable, rear carb only	1
BA57	ZEB18689	Clip , securing outer choke cable	2
BA58	ZEB15346	Screw , securing bracket to carb body	2
TEMPERATURE COMPENSATOR DETAILS			
BA59	ZEB19656	TEMPERATURE COMPENSATOR ASSEMBLY	2
BA60	ZEB17933	Cover , plastic	2
BA61	ZEB18285	Screw , securing cover	4
BA62	ZEB17947	Washer , sealing, in carb counterbore	2
BA63	ZEB17946	Washer , sealing, between temperature compensator and carb body	2
BA64	ZEO9200	Screw , securing temperature compensator	4
BA65	ZEO7734	Washer , shakeproof, securing screws	4
BYPASS VALVE DETAILS			
BA66	ZEB23215	BYPASS VALVE ASSEMBLY	2
BA67	ZEBPV56	Diaphragm , bypass valve	2
BA68	ZEB18824	Gasket , bypass valve	2
BA69	ZEB18821	Screw , countersunk, fixing bypass cover to body	6
BA70	ZEB19371	Washer , shakeproof	6
		HARDWARE , securing bypass valve to carb	
BA71	ZEB19225	Screw and Lock Washer Assembly	4
BA72	ZEB18822	Screw , countersunk	2
BA73	ZEB19371	Washer , shakeproof	2

Plate No.	Part No.	Description	No. Off
GASKET SETS AND REBUILD KITS			
	ZEGP244	Gasket Pack	2
	ZEB19633	Emission Pack , 12,000 miles service	2
	ZEB23161	Emission Pack , 24,000 miles service	2
	ZEMS577A	Rebuild Kit , major	2
	RFK141	Throttle Shaft Kit , comprising throttle shafts for front and rear carbs and replacement bushes; order throttle shaft seals separately if required	1
BA74	ZEB23187	Valve and Bracket Assembly , operating E.G.R. valve, fitted to rear carb only; mounts and operates with cold start valve	1
COUPLING DETAILS (Not included with carburettor assemblies.)			
BA75	ZEB18310	Spindle Coupling Assembly	1
BA76	ZEO20059	FOLDED COUPLING ASSEMBLY	2
	ZEO19819	Coupling	2
	ZEO18667	Bolt	4
	ZEO18668	Washer , plain	4
	ZEO18669	Nut	4
MOUNTING DETAILS , carburettors to intake manifold			
BA77	148035	Gasket	4
BA78	148036	Spacer	2
		HARDWARE , securing carbs to intake manifold	
BA79	132873	Stud	8
BA80	WL208	Washer , lock	8
BA81	HN2008	Nut	8
FUEL PIPES AND CONNECTING DETAILS			
BA82	217494	Fuel Pipe Assembly , connecting carbs to pipe from fuel pump	1
BA83	145735	Connection , rubber, carb pipe to pipe from fuel pump, fitted up to eng. no. CF17622	1
	115783	Connection , rubber, carb pipe to pipe from fuel pump, fitted after eng. no. CF17622	1
BA84	154124	Connection , elbow, rubber, carb pipe to front carb	1
BA85	120331	Connection , rubber, carb pipe to rear carb	1
BA86	UKC3794	Clip , hose, securing fuel line connections (These may not have been fitted to this model range.)	6
BREATHER HOSE ATTACHMENTS			
BA87	155148	Adaptor , plastic, black, breather hoses to front and rear carbs	2
CARBURETTOR IDENTIFICATION TAGS			
BA88	CNP69	Tag , metal, stamped C3613LH, for rear carb	1
BA89	CNP70	Tag , metal, stamped C3613RH, for front carb	1

CARBURETTORS, 1975 UP 1976

This diagram illustrates the exploded view of a carburetor assembly, showing the relationship between various components. The parts are labeled with codes such as BB1, BB2, BB3, BB4, BB5, BB6, BB7, BB8, BB9, BB10, BB11, BB12, BB13, BB14, BB15, BB16, BB17, BB18, BB19, BB20, BB21, BB22, BB23, BB24, BB25, BB26, BB27, BB28, BB29, BB30, BB31, BB32, BB33, BB34, BB35, BB36, BB37, BB38, BB39, BB40, BB41, BB42, BB43, BB44, BB45, BB46, BB47, BB48, BB49, BB50, BB51, BB52, BB53, BB54, BB55, BB56, BB57, BB58, BB59, BB60, BB61, BB62, BB63, BB64, BB65, BB66, BB67, BB68, BB69, BB70, BB71, BB72, BB73, BB74, BB75, BB76, BB77, BB78, BB79, BB80, BB81, BB82, BB83, BB84, BB85, BB86, BB87, BB88, BB89, BB90, BB91, BB92, BB93, BB94, BB95, BB96, BB97, BB98, BB99, BB100, BB101, BB102, BB103, BB104, BB105, BB106, BB107, BB108, BB109, BB110, BB111, BB112, BB113, BB114, BB115, BB116, BB117, BB118, BB119, BB120, BB121, BB122, BB123, BB124, BB125, BB126, BB127, BB128, BB129, BB130, BB131, BB132, BB133, BB134, BB135, BB136, BB137, BB138, BB139, BB140, BB141, BB142, BB143, BB144, BB145, BB146, BB147, BB148, BB149, BB150, BB151, BB152, BB153, BB154, BB155, BB156, BB157, BB158, BB159, BB160, BB161, BB162, BB163, BB164, BB165, BB166, BB167, BB168, BB169, BB170, BB171, BB172, BB173, BB174, BB175, BB176, BB177, BB178, BB179, BB180, BB181, BB182, BB183, BB184, BB185, BB186, BB187, BB188, BB189, BB190, BB191, BB192, BB193, BB194, BB195, BB196, BB197, BB198, BB199, BB200, BB201, BB202, BB203, BB204, BB205, BB206, BB207, BB208, BB209, BB210, BB211, BB212, BB213, BB214, BB215, BB216, BB217, BB218, BB219, BB220, BB221, BB222, BB223, BB224, BB225, BB226, BB227, BB228, BB229, BB230, BB231, BB232, BB233, BB234, BB235, BB236, BB237, BB238, BB239, BB240, BB241, BB242, BB243, BB244, BB245, BB246, BB247, BB248, BB249, BB250, BB251, BB252, BB253, BB254, BB255, BB256, BB257, BB258, BB259, BB260, BB261, BB262, BB263, BB264, BB265, BB266, BB267, BB268, BB269, BB270, BB271, BB272, BB273, BB274, BB275, BB276, BB277, BB278, BB279, BB280, BB281, BB282, BB283, BB284, BB285, BB286, BB287, BB288, BB289, BB290, BB291, BB292, BB293, BB294, BB295, BB296, BB297, BB298, BB299, BB300, BB301, BB302, BB303, BB304, BB305, BB306, BB307, BB308, BB309, BB310, BB311, BB312, BB313, BB314, BB315, BB316, BB317, BB318, BB319, BB320, BB321, BB322, BB323, BB324, BB325, BB326, BB327, BB328, BB329, BB330, BB331, BB332, BB333, BB334, BB335, BB336, BB337, BB338, BB339, BB340, BB341, BB342, BB343, BB344, BB345, BB346, BB347, BB348, BB349, BB350, BB351, BB352, BB353, BB354, BB355, BB356, BB357, BB358, BB359, BB360, BB361, BB362, BB363, BB364, BB365, BB366, BB367, BB368, BB369, BB370, BB371, BB372, BB373, BB374, BB375, BB376, BB377, BB378, BB379, BB380, BB381, BB382, BB383, BB384, BB385, BB386, BB387, BB388, BB389, BB390, BB391, BB392, BB393, BB394, BB395, BB396, BB397, BB398, BB399, BB400, BB401, BB402, BB403, BB404, BB405, BB406, BB407, BB408, BB409, BB410, BB411, BB412, BB413, BB414, BB415, BB416, BB417, BB418, BB419, BB420, BB421, BB422, BB423, BB424, BB425, BB426, BB427, BB428, BB429, BB430, BB431, BB432, BB433, BB434, BB435, BB436, BB437, BB438, BB439, BB440, BB441, BB442, BB443, BB444, BB445, BB446, BB447, BB448, BB449, BB450, BB451, BB452, BB453, BB454, BB455, BB456, BB457, BB458, BB459, BB460, BB461, BB462, BB463, BB464, BB465, BB466, BB467, BB468, BB469, BB470, BB471, BB472, BB473, BB474, BB475, BB476, BB477, BB478, BB479, BB480, BB481, BB482, BB483, BB484, BB485, BB486, BB487, BB488, BB489, BB490, BB491, BB492, BB493, BB494, BB495, BB496, BB497, BB498, BB499, BB500, BB501, BB502, BB503, BB504, BB505, BB506, BB507, BB508, BB509, BB510, BB511, BB512, BB513, BB514, BB515, BB516, BB517, BB518, BB519, BB520, BB521, BB522, BB523, BB524, BB525, BB526, BB527, BB528, BB529, BB530, BB531, BB532, BB533, BB534, BB535, BB536, BB537, BB538, BB539, BB540, BB541, BB542, BB543, BB544, BB545, BB546, BB547, BB548, BB549, BB550, BB551, BB552, BB553, BB554, BB555, BB556, BB557, BB558, BB559, BB560, BB561, BB562, BB563, BB564, BB565, BB566, BB567, BB568, BB569, BB570, BB571, BB572, BB573, BB574, BB575, BB576, BB577, BB578, BB579, BB580, BB581, BB582, BB583, BB584, BB585, BB586, BB587, BB588, BB589, BB590, BB591, BB592, BB593, BB594, BB595, BB596, BB597, BB598, BB599, BB600, BB601, BB602, BB603, BB604, BB605, BB606, BB607, BB608, BB609, BB610, BB611, BB612, BB613, BB614, BB615, BB616, BB617, BB618, BB619, BB620, BB621, BB622, BB623, BB624, BB625, BB626, BB627, BB628, BB629, BB630, BB631, BB632, BB633, BB634, BB635, BB636, BB637, BB638, BB639, BB640, BB641, BB642, BB643, BB644, BB645, BB646, BB647, BB648, BB649, BB650, BB651, BB652, BB653, BB654, BB655, BB656, BB657, BB658, BB659, BB660, BB661, BB662, BB663, BB664, BB665, BB666, BB667, BB668, BB669, BB670, BB671, BB672, BB673, BB674, BB675, BB676, BB677, BB678, BB679, BB680, BB681, BB682, BB683, BB684, BB685, BB686, BB687, BB688, BB689, BB690, BB691, BB692, BB693, BB694, BB695, BB696, BB697, BB698, BB699, BB700, BB701, BB702, BB703, BB704, BB705, BB706, BB707, BB708, BB709, BB710, BB711, BB712, BB713, BB714, BB715, BB716, BB717, BB718, BB719, BB720, BB721, BB722, BB723, BB724, BB725, BB726, BB727, BB728, BB729, BB730, BB731, BB732, BB733, BB734, BB735, BB736, BB737, BB738, BB739, BB740, BB741, BB742, BB743, BB744, BB745, BB746, BB747, BB748, BB749, BB750, BB751, BB752, BB753, BB754, BB755, BB756, BB757, BB758, BB759, BB760, BB761, BB762, BB763, BB764, BB765, BB766, BB767, BB768, BB769, BB770, BB771, BB772, BB773, BB774, BB775, BB776, BB777, BB778, BB779, BB780, BB781, BB782, BB783, BB784, BB785, BB786, BB787, BB788, BB789, BB790, BB791, BB792, BB793, BB794, BB795, BB796, BB797, BB798, BB799, BB800, BB801, BB802, BB803, BB804, BB805, BB806, BB807, BB808, BB809, BB810, BB811, BB812, BB813, BB814, BB815, BB816, BB817, BB818, BB819, BB820, BB821, BB822, BB823, BB824, BB825, BB826, BB827, BB828, BB829, BB830, BB8

CARBURETTORS, 1975 UP TO 1976

Plate No.	Part No.	Description	No. Off
		CARBURETTORS , fitted after eng. no. CF35000	
ZEC3771LH		REAR CARBURETTOR ASSEMBLY , Zenith Stromberg	1
		model 175CD-SEVX	
RKC1798R		Factory Rebuilt Unit	1
ZEC3771RH		FRONT CARBURETTOR ASSEMBLY , Zenith Stromberg	1
		model 175CD-SEVX	
RKC1799R		Factory Rebuilt Unit	1
		CARBURETTOR IDENTIFICATION CHECKLIST	
		• Metal tags attached to top cover screws should read C3771LH or C3771RH .	
		• Damper caps are white plastic on this carb model rather than black as on previous models.	
		• Locate slanted pipes for attaching breather hoses on front sides of both carbs in close to manifold.	
		• Locate horizontal breather attachment pipes on rear sides of both carbs close to air cleaner faces.	
		• Locate vacuum fitting (copper pipe) on underside of front carb near center of mounting flange.	
		• Locate screw-in vacuum fitting on upper side of rear carb near center of mounting flange.	
		• Bypass valves are adjustable as indicated by small adjusting screws in centers.	
		• Bypass valves should not have vacuum fittings or, if present, they should be blanked off.	
		• Identification characters stamped on air cleaner faces are normally BT224 and BT225 .	
		• Check cold start valve; cams will be stamped SRZ , and bodies should be marked B4 .	
		• Identify vent levers on rear sides of carbs (Plate no. BB37); levers are made of die-cast metal rather than steel.	
		• Although carbs can be identified without reference to identification tags, keeping the tags in place is the surest approach.	
		MAIN BODY DETAILS	
		Main Body Assembly	NSS
BB1		Adaptor , vacuum connection, rear carb, top	1
BB2	ZEB20254	Screw , stop, vent lever	2
BB3	ZEB20365	Nut , locking screw	2
BB4	ZEB20366	Screw , idler trimming	2
BB5	ZEB18479	Spring , idler trimming screw	2
BB6	ZEB18480		
		SUCTION CHAMBER DETAILS	
BB7	ZEB20044	Damper Assembly	2
BB8	520962	Gasket , damper	2
BB9		Air Valve and Guide Rod Assembly	NSS
BB10		Top Cover Assembly , suction chamber	NSS
BB11	ZEO19654	Screw and Lock Washer Assembly , securing top cover assembly	8
BB12	ZEB19420	Diaphragm	2

Plate No.	Part No.	Description	No. Off
		SUCTION CHAMBER DETAILS—Continued	
BB13	ZEB17385	Washer , retaining	2
BB14	ZEB17386	Ring , sealing, diaphragm	2
BB15	ZEB18088	Screw , securing diaphragm and retainers	8
BB16	ZEB20376	METERING NEEDLE , adjustable (Coded B. 1AF.)	2
BB17	ZEB20108	Screw , retaining, metering needle	2
BB18	ZEB20042	SCREW , adjusting, metering needle	2
BB19	ZEO19657	“O” Ring , oil sealing, adjusting screw	2
BB20	ZEB19995	Clip , spring, retaining, adjusting screw	2
BB21	ZEB18277	Spring , air valve return	2
		THROTTLE DETAILS	
BB22	ZEB18230	Spindle , throttle, front carb	1
BB23	ZEB18119	Spindle , throttle, rear carb	1
BB24	ZEO19608	Disc , throttle	2
BB25	ZEO10351	Screw , securing throttle disc	4
BB26	ZEB18032	SEAL ASSEMBLY , throttle shaft	4
	517003/N	Seal , throttle shaft (neoprene part only)	4
BB27	ZEB23312	Spring , throttle return	2
BB28	ZEO6442	Washer	2
BB29	ZEB2298	Lever , throttle stop and fast idle	2
BB30	ZEO19531	Screw , fast idle	2
BB31	ZEO19480	Nut , locking screw	2
BB32	ZEO19067	Washer , tab, front carb only	1
BB33	ZEB17337	Nut , extension, front carb only	1
BB34	ZEO5660	Washer , spacing, rear carb only	2
BB35	ZEO8758	Washer , shakeproof, rear carb only	1
BB36	ZEL1475	Nut , rear carb only	1
		VENT LEVER DETAILS	
BB37	ZEB22987	Lever , vent	2
BB38	ZEB22991	Liner	2
BB39	ZEB23086	Washer , spacing	2
BB40	ZEB18788	Ring , retaining	2
BB41	ZEO20363	Screw , throttle stop	2
BB42	ZEO15458	Spring , throttle stop screw	2
		FLOAT CHAMBER DETAILS	
BB43	ZEB20687	Needle Valve	2
BB44	ZEO9729	Washer , needle valve	2
BB45	ZEB19470	Float and Arm Assembly	2
BB46	ZEB18613	Pin , pivot, float assembly	2
BB47	ZEB16506	Float Chamber	2
BB48	ZEB16518	Gasket	2

(Continued on next page.)

CARBURETTORS, 1975 UP 1976

This diagram illustrates the exploded view of a carburetor assembly, showing the main body, throttle linkage, and various internal components. The parts are labeled with blue text and leader lines pointing to their respective locations. The labels include:

- BB36, BB35, BB34 (Top left screws/bushings)
- BB23 (Throttle cable)
- BB2 (Throttle cable fitting)
- BB87 (Throttle lever)
- BB48 (Throttle body cover)
- BB46 (Throttle body gasket)
- BB47 (Throttle body base)
- BB51 (Throttle body screw)
- BB52 (Throttle body pin)
- BB50 (Throttle body bushing)
- BB49 (Throttle body cap)
- BB84 (Throttle body pin)
- BB45 (Throttle body gasket)
- BB44 (Throttle body bushing)
- BB43 (Throttle body pin)
- BB55 (Throttle body bushing)
- BB54 (Throttle body pin)
- BB74 (Throttle body pin)
- BB75 (Throttle body pin)
- BB33 (Throttle body pin)
- BB32 (Throttle body pin)
- BB29 (Throttle body pin)
- BB31 (Throttle body pin)
- BB28 (Throttle body pin)
- BB27 (Throttle body pin)
- BB57 (Throttle body pin)
- BB39 (Throttle body pin)
- BB38 (Throttle body pin)
- BB40 (Throttle body pin)
- BB37 (Throttle body pin)
- BB41 (Throttle body pin)
- BB88 (Throttle body pin)
- BB11 (Throttle body pin)
- BB10 (Throttle body pin)
- BB21 (Throttle body pin)
- BB13 (Throttle body pin)
- BB14 (Throttle body pin)
- BB12 (Throttle body pin)
- BB76 (Throttle body pin)
- BB78 (Throttle body pin)
- BB77 (Throttle body pin)
- BB86 (Throttle body pin)
- BB67 (Throttle body pin)
- BB73 (Throttle body pin)
- BB72 (Throttle body pin)
- BB69 (Throttle body pin)
- BB70 (Throttle body pin)
- BB71 (Throttle body pin)
- BB65 (Throttle body pin)
- BB64 (Throttle body pin)
- BB59 (Throttle body pin)
- BB60 (Throttle body pin)
- BB66 (Throttle body pin)
- BB63 (Throttle body pin)
- BB62 (Throttle body pin)
- BB61 (Throttle body pin)
- BB58 (Throttle body pin)
- BB56 (Throttle body pin)
- BB26 (Throttle body pin)
- BB4 (Throttle body pin)
- BB22 (Throttle body pin)
- BB3 (Throttle body pin)
- BB18 (Throttle body pin)
- BB19 (Throttle body pin)
- BB20 (Throttle body pin)
- BB16 (Throttle body pin)
- BB17 (Throttle body pin)
- BB24 (Throttle body pin)
- BB25 (Throttle body pin)
- BB68 (Throttle body pin)
- BB81 (Throttle body pin)
- BB83 (Throttle body pin)
- BB82 (Throttle body pin)
- BB80 (Throttle body pin)
- BB79 (Throttle body pin)
- BB1 (Throttle body pin)
- BB85 (Throttle body pin)
- BB53 (Throttle body pin)
- BB30 (Throttle body pin)
- BB34 (Throttle body pin)
- BB35 (Throttle body pin)
- BB36 (Throttle body pin)
- BB37 (Throttle body pin)
- BB38 (Throttle body pin)
- BB39 (Throttle body pin)
- BB40 (Throttle body pin)
- BB41 (Throttle body pin)
- BB42 (Throttle body pin)
- BB43 (Throttle body pin)
- BB44 (Throttle body pin)
- BB45 (Throttle body pin)
- BB46 (Throttle body pin)
- BB47 (Throttle body pin)
- BB48 (Throttle body pin)
- BB49 (Throttle body pin)
- BB50 (Throttle body pin)
- BB51 (Throttle body pin)
- BB52 (Throttle body pin)
- BB53 (Throttle body pin)
- BB54 (Throttle body pin)
- BB55 (Throttle body pin)
- BB56 (Throttle body pin)
- BB57 (Throttle body pin)
- BB58 (Throttle body pin)
- BB59 (Throttle body pin)
- BB60 (Throttle body pin)
- BB61 (Throttle body pin)
- BB62 (Throttle body pin)
- BB63 (Throttle body pin)
- BB64 (Throttle body pin)
- BB65 (Throttle body pin)
- BB66 (Throttle body pin)
- BB67 (Throttle body pin)
- BB68 (Throttle body pin)
- BB69 (Throttle body pin)
- BB70 (Throttle body pin)
- BB71 (Throttle body pin)
- BB72 (Throttle body pin)
- BB73 (Throttle body pin)
- BB74 (Throttle body pin)
- BB75 (Throttle body pin)
- BB76 (Throttle body pin)
- BB77 (Throttle body pin)
- BB78 (Throttle body pin)
- BB79 (Throttle body pin)
- BB80 (Throttle body pin)
- BB81 (Throttle body pin)
- BB82 (Throttle body pin)
- BB83 (Throttle body pin)
- BB84 (Throttle body pin)
- BB85 (Throttle body pin)
- BB86 (Throttle body pin)
- BB87 (Throttle body pin)
- BB88 (Throttle body pin)
- BB89 (Throttle body pin)
- BB90 (Throttle body pin)
- BB91 (Throttle body pin)
- BB92 (Throttle body pin)
- BB93 (Throttle body pin)
- BB94 (Throttle body pin)
- BB95 (Throttle body pin)
- BB96 (Throttle body pin)
- BB97 (Throttle body pin)
- BB98 (Throttle body pin)
- BB99 (Throttle body pin)
- BB100 (Throttle body pin)

CARBURETTORS, 1975 UP TO 1976

Plate No.	Part No.	Description	No. Off
FLOAT CHAMBER DETAILS—Continued			
BB49	ZEB20767	SEALING PLUG	2
BB50	ZEO19658	“O” Ring	2
BB51	ZEB19224	Screw and Lock Washer Assembly , long, securing float chamber	8
BB52	ZEB19225	Screw and Lock Washer Assembly , short, securing float chamber	4
STARTER (CHOKE) DETAILS			
BB53	ZEB24522	Cold Start Valve Assembly	2
BB54	ZEB17269	Screw , securing valve to carb body	4
BB55	ZEL1402	Washer , shakeproof	4
BB56	ZEB22931	BRACKET ASSEMBLY , choke control cable, front carb only	1
	ZEB17088	BRACKET ASSEMBLY , choke control cable, rear carb only	1
BB57	ZEB18689	Clip , securing outer choke cable to bracket	2
BB58	ZEB15346	Screw , securing bracket to carb body	2
TEMPERATURE COMPENSATOR DETAILS			
BB59	ZEB19656	TEMPERATURE COMPENSATOR ASSEMBLY	2
BB60	ZEB17933	Cover , plastic	2
BB61	ZEB18285	Screw , securing cover	4
BB62	ZEB17947	Washer , sealing, in carb counterbore	2
BB63	ZEB17946	Washer , sealing, between temperature compensator and carb body	2
BB64	ZEO9200	Screw , securing temperature compensator to carb body	4
BB65	ZEO7734	Washer , shakeproof, securing screws	4
BYPASS VALVE DETAILS			
BB66	ZEB24519	BYPASS VALVE ASSEMBLY	2
BB67	ZEBPV56	Diaphragm , bypass valve	2
BB68	ZEB18824	Gasket	2
BB69	ZEB18821	Screw , countersunk, fixing bypass cover to body	6
BB70	ZEB19371	Washer , shakeproof	6
		HARDWARE , securing bypass valve to carb	
BB71	ZEB19225	Screw and Lock Washer Assembly	4
BB72	ZEB18822	Screw , countersunk	2
BB73	ZEB19371	Washer , shakeproof	2
GASKET SETS AND REBUILD KITS			
	ZEGP244	Gasket Pack	2
	ZEB19633	Emission Pack , 12,000 miles service	2
	ZEB23161	Emission Pack , 24,000 miles service	2
	ZEMS577A	Rebuild Kit , major	2
	RFK141	Throttle Shaft Kit , comprising throttle shafts for front and rear carbs and replacement bushes; order throttle shaft seals separately if required.	1

Plate No.	Part No.	Description	No. Off
COUPLING DETAILS (Not included with carburettor assemblies.)			
BB74	ZEB18310	Spindle Coupling Assembly	1
BB75	ZEO20059	FOLDED COUPLING ASSEMBLY	2
	ZEO19819	Coupling	2
	ZEO18667	Bolt	4
	ZEO18668	Washer , plain	4
	ZEO18669	Nut	4
MOUNTING DETAILS , carburettors to intake manifold			
BB76	148035	Gasket	4
BB77	148036	Spacer	2
HARDWARE , securing carbs to intake manifold			
BB78	132873	Stud	8
BB79	WL208	Washer , lock	8
BB80	HN2008	Nut	8
FUEL PIPES AND CONNECTING DETAILS			
BB81	217494	Fuel Pipe Assembly , connecting carbs to pipe from fuel pump	1
BB82	115783	Connection , rubber, carb pipe to pipe from fuel pump	1
BB83	154124	Connection , elbow, rubber, carb pipe to front carb	1
BB84	120331	Connection , rubber, carb pipe to rear carb	1
BB85	UKC3794	Clip , hose, securing fuel line connections	6
BREATHER HOSE ATTACHMENTS			
BB86	155148	Adaptor , plastic, black, breather hoses to front and rear carbs	2
CARBURETTOR IDENTIFICATION TAGS			
BB87	CNP71	Tag , metal, stamped C3771LH, for rear carb	1
BB88	CNP72	Tag , metal, stamped C3771RH, for front carb	1