

FUEL TANK & CONNECTING DETAILS —P.I. MODELS

FUEL TANK & CONNECTING DETAILS
—P.I. MODELS

This diagram illustrates the assembly of a fuel tank and its connecting components. The central fuel tank is shown with various mounting points and connection ports. Key components include:

- Fuel Tank (BQ1, BQ4, BQ5, BQ6):** The main rectangular fuel tank with mounting flanges.
- Mounting Hardware:** Includes bolts (BQ2, BQ3, BQ7, BQ8, BQ9, BQ10, BQ61, BQ62), nuts (BQ63, BQ64), washers (BQ65, BQ66, BQ67, BQ68), and brackets (BQ3, BQ4, BQ5, BQ6, BQ7, BQ8, BQ9, BQ10, BQ61, BQ62).
- Fuel Lines and Connectors:** Includes fuel lines (BQ11, BQ12, BQ13, BQ14, BQ15, BQ16, BQ17, BQ18, BQ19, BQ20, BQ21, BQ22, BQ23, BQ24, BQ25, BQ26, BQ27, BQ28, BQ29, BQ30, BQ31, BQ32, BQ33, BQ34, BQ35, BQ36, BQ37, BQ38, BQ39, BQ40, BQ41, BQ42, BQ43, BQ44, BQ45, BQ46, BQ47, BQ48, BQ49, BQ50, BQ51, BQ52, BQ53, BQ54, BQ55, BQ56, BQ57, BQ58, BQ59, BQ60, BQ61, BQ62, BQ63, BQ64, BQ65, BQ66, BQ67, BQ68, BQ69, BQ70), connectors (BQ11, BQ12, BQ13, BQ14, BQ15, BQ16, BQ17, BQ18, BQ19, BQ20, BQ21, BQ22, BQ23, BQ24, BQ25, BQ26, BQ27, BQ28, BQ29, BQ30, BQ31, BQ32, BQ33, BQ34, BQ35, BQ36, BQ37, BQ38, BQ39, BQ40, BQ41, BQ42, BQ43, BQ44, BQ45, BQ46, BQ47, BQ48, BQ49, BQ50, BQ51, BQ52, BQ53, BQ54, BQ55, BQ56, BQ57, BQ58, BQ59, BQ60, BQ61, BQ62, BQ63, BQ64, BQ65, BQ66, BQ67, BQ68, BQ69, BQ70), and fittings (BQ11, BQ12, BQ13, BQ14, BQ15, BQ16, BQ17, BQ18, BQ19, BQ20, BQ21, BQ22, BQ23, BQ24, BQ25, BQ26, BQ27, BQ28, BQ29, BQ30, BQ31, BQ32, BQ33, BQ34, BQ35, BQ36, BQ37, BQ38, BQ39, BQ40, BQ41, BQ42, BQ43, BQ44, BQ45, BQ46, BQ47, BQ48, BQ49, BQ50, BQ51, BQ52, BQ53, BQ54, BQ55, BQ56, BQ57, BQ58, BQ59, BQ60, BQ61, BQ62, BQ63, BQ64, BQ65, BQ66, BQ67, BQ68, BQ69, BQ70).
- Accessories:** Includes a fuel filter (BQ12), a fuel pump (BQ15), a fuel valve (BQ16), a fuel nozzle (BQ17), a fuel hose (BQ18, BQ19), a fuel line (BQ20, BQ21, BQ22, BQ23, BQ24, BQ25, BQ26, BQ27, BQ28, BQ29, BQ30, BQ31, BQ32, BQ33, BQ34, BQ35, BQ36, BQ37, BQ38, BQ39, BQ40, BQ41, BQ42, BQ43, BQ44, BQ45, BQ46, BQ47, BQ48, BQ49, BQ50, BQ51, BQ52, BQ53, BQ54, BQ55, BQ56, BQ57, BQ58, BQ59, BQ60, BQ61, BQ62, BQ63, BQ64, BQ65, BQ66, BQ67, BQ68, BQ69, BQ70), a fuel tank cap (BQ11), a fuel tank filler neck (BQ12), a fuel tank vent (BQ13), a fuel tank drain (BQ14, BQ15, BQ16, BQ17, BQ18, BQ19, BQ20, BQ21, BQ22, BQ23, BQ24, BQ25, BQ26, BQ27, BQ28, BQ29, BQ30, BQ31, BQ32, BQ33, BQ34, BQ35, BQ36, BQ37, BQ38, BQ39, BQ40, BQ41, BQ42, BQ43, BQ44, BQ45, BQ46, BQ47, BQ48, BQ49, BQ50, BQ51, BQ52, BQ53, BQ54, BQ55, BQ56, BQ57, BQ58, BQ59, BQ60, BQ61, BQ62, BQ63, BQ64, BQ65, BQ66, BQ67, BQ68, BQ69, BQ70).

FUEL TANK AND CONNECTING DETAILS—P.I. MODEL

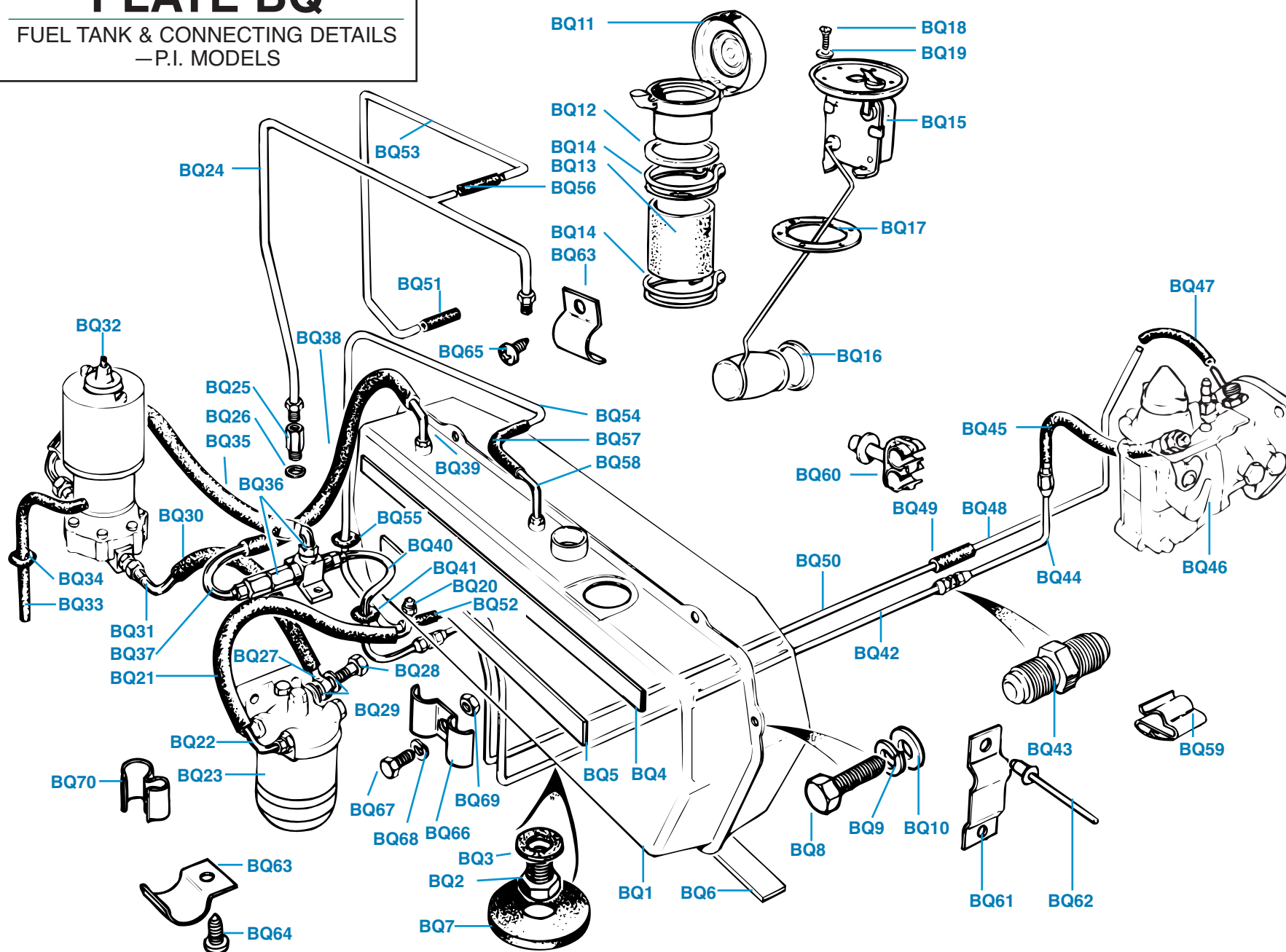
Plate No.	Part No.	Description	No. Off	Plate No.	Part No.	Description	No. Off
FUEL TANKS				FUEL GAUGE TANK UNITS			
BQ1	308940	FUEL TANK ASSEMBLY , fitted up to comm. no. CP50000	1	BQ15	214465	TANK SENDING UNIT	1
BQ2	103222	Plug , drain	1	BQ16	139908	Washer , anti-rattle	1
BQ3	WF513	Washer , fibre, sealing plug	1	BQ17	110777	Gasket , cork, between tank unit and tank	1
	311282	FUEL TANK ASSEMBLY , fitted from comm. no. CP50000	1	HARDWARE , securing tank unit to tank			
		up to CP75000		BQ18	TR6503	Screw , set	6
	103222	Plug , drain	1	BQ19	WF505	Washer , fibre	6
	WF513	Washer , fibre, sealing plug	1	FUEL PIPES AND CONNECTING DETAILS			
	312361	Fuel Tank Assembly , without drain plug, fitted after	1	FUEL LINE DETAILS , from fuel tank to fuel filter			
		comm. no. CP75000, all markets except Germany		FUEL PIPE ASSEMBLY , from fuel tank to rubber			
	312359	FUEL TANK ASSEMBLY , fitted after comm. no. CP75000,	1			connector, fitted up to comm. no. CP50000	1
		German market only		BQ20	151204	FUEL PIPE ASSEMBLY , from fuel tank to rubber	1
		Plug , drain	1		149556	connector, fitted after comm. no. CP50000	1
	WF513	Washer , fibre, sealing plug	1		60142	Nut , tubing, connecting fuel pipe to tank	1
FUEL TANK MOUNTING DETAILS					TL8	Sleeve , tubing, sealing connection	1
BQ4	611972	Felt , tank mounting, rear, top	1	BQ21	153141	Connector , rubber 13 1/2-inch length, fitted up to	1
BQ5	611973	Felt , tank mounting, rear, bottom	1			comm. no. CP50000	
BQ6	617885	Felt , tank mounting, floor, fitted after comm. no.	1		153151	Connector , rubber, 11-inch length, fitted from	1
		CP75000 approx.				comm. no. CP50000 up to CR12500	
BQ7	611733	Seal , drain plug and tank outlet to body floor, fitted to	2		159425	Connector , rubber, 11 1/4-inch length, fitted after	1
		all markets up to comm. no. CP75000 and to		BQ22	149556	comm. no. CR12500	
		German market only after CP75000				FUEL PIPE ASSEMBLY , from rubber connector to	1
	611733	Seal , tank outlet to body floor, fitted after comm. no.	1		60142	filter head (Inlet port on rear side.)	
		CP75000, all markets except Germany			TL8	Nut , tubing, connecting fuel pipe to filter head	1
	623176	Plug , rubber, blanking redundant tank drain hole,	1	BQ23		Sleeve , tubing, sealing connection	1
		fitted after comm. no. CP75000		FUEL FILTER DETAILS (See Section BR.)			
		HARDWARE , securing fuel tank to body		VENT PIPE DETAILS , from fuel filter head to fuel tank,			
BQ8	HU707P	Screw , set	6			fitted up to comm. no. CP50000	
BQ9	WL207	Washer , lock	6	BQ24	214895	VENT PIPE ASSEMBLY	1
BQ10	WP120	Washer , plain	6		60176	Nut , tubing, connecting vent pipe to adaptor	2
FUEL FILLER CAPS						fitting on filter head and to fuel tank	
BQ11	613506	Fuel Filler Cap Assembly , fitted up to comm. no.	1		TL7	Sleeve , tubing, sealing connections	2
		CP50000 approx.		BQ25	148312	Adaptor , vent pipe to filter head	1
	722612	FUEL FILLER CAP ASSEMBLY , fitted from comm. no.	1	BQ26	150710	Washer , sealing adaptor to filter head	1
		CP50000 approx. up to CP75000 approx.		BQ27	151215	FUEL LINE DETAILS , from fuel filter to fuel pump	
	718738	Seal , rubber, in cap	1			Banjo Fitting , connecting fuel filter to rubber	1
	725117	FUEL FILLER CAP ASSEMBLY , fitted after comm. no.	1			connector, fitted to outlet port on front side of	
		CP75000 approx.; quite similar to previous listing				filter head	
	718738	Seal , rubber, in cap	1	BQ28	135566	Bolt , securing banjo fitting to filter head	1
FUEL CAP FITTING DETAILS				BQ29	133006	Washer , sealing banjo connection	2
BQ12	650247	Grommet , rubber, between filler neck and mounting	1	BQ30	153146	Connector , rubber	1
		hole in rear deck		BQ31	149557	FUEL PIPE ASSEMBLY , from rubber connector to fuel	1
BQ13	650279	Connection , rubber, between filler neck and fuel tank	1			pump	
BQ14	CS4038	Clip , hose, securing connection to filler neck and to	2		151878	Nut , tubing, connecting fuel pipe assembly to	1
		fuel tank			148813	fuel pump inlet	
						Sleeve , tubing, sealing connection	1

(Continued on next page.)

PLATE BQ

FUEL TANK & CONNECTING DETAILS
—P.I. MODELS

TRIUMPH TR6



FUEL TANK AND CONNECTING DETAILS—P.I. MODELS

Plate No.	Part No.	Description	No. Off
BQ32		FUEL PIPES AND CONNECTING DETAILS-Continued FUEL PUMP DETAILS, (See Section BR.) FUEL PUMP DRAIN PIPE DETAILS PUMP DRAIN DETAILS, fitted up to mid-1970	
BQ33	149775	Pipe, fuel pump drain	1
BQ34	600396	Grommet, rubber, sealing trunk floor	1
		PUMP DRAIN DETAILS, fitted after mid-1970	
	155945	PIPE ASSEMBLY, fuel pump drain	1
	148947	Elbow	1
	215921	Pipe, drain	1
	154299	Tube	1
	120331	Connection, rubber	1
	131155	Grommet, rubber, sealing trunk floor	1
BQ35	215642	Hose Assembly, from fuel pump to T-fitting	1
BQ36		T-FITTING, STRAINER, AND PRESSURE RELIEF DETAILS (See Section BR.) FUEL RETURN DETAILS, from pressure relief valve to fuel tank	
BQ37	152235	FUEL RETURN PIPE ASSEMBLY, from pressure relief valve to rubber connector	1
	152275	Nut, tubing, connecting fuel pipe to pressure relief valve	1
	SP66C	Nipple	1
BQ38	153142	Connector, rubber, 19-inch length, fitted up to comm. no. CP50000	1
	149613	Connector, rubber, 19-inch length, fitted after comm. no. CP50000	1
BQ39	152232	FUEL RETURN PIPE ASSEMBLY, from rubber connector to fuel tank, fitted up to comm. no. CP50000	1
	154247	FUEL RETURN PIPE ASSEMBLY, from rubber connector to fuel tank, fitted after comm. no. CP50000	1
	60142	Nut, tubing, connecting fuel pipe to fuel tank	1
	TL8	Sleeve, tubing, sealing connection	1
		FUEL DELIVERY DETAILS, from T-fitting to fuel metering unit	
BQ40	151229	Fuel Pipe Assembly, from T-fitting outlet through trunk floor to rear fuel delivery pipe	1
BQ41	600395	Grommet, rubber, sealing hole in trunk floor	1
BQ42	308826	Fuel Delivery Pipe Assembly, rear, from outlet pipe to double-ended fitting	1
BQ43	149767	Fitting, double-ended	1
BQ44	149754	Fuel Delivery Pipe Assembly, front, from double-ended fitting to connecting hose	1
BQ45	214890	Hose Assembly, front, from front delivery pipe to fuel metering unit	1

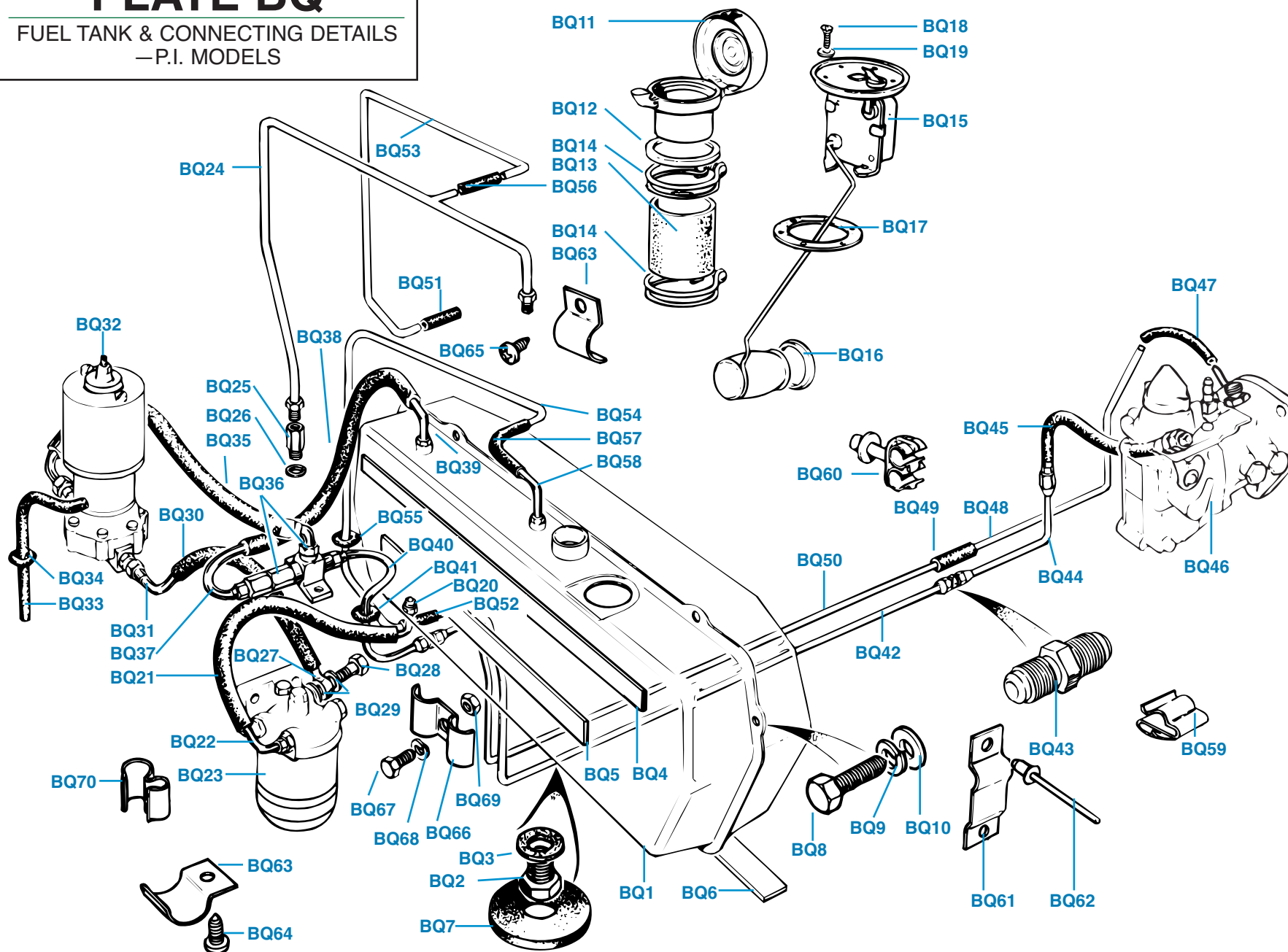
Plate No.	Part No.	Description	No. Off
BQ46		FUEL PIPES AND CONNECTING DETAILS-Continued FUEL METERING UNIT DETAILS (See Section BS.) FUEL RETURN DETAILS, from fuel metering unit to fuel tank	
		CONNECTIONS, fuel metering unit to front return pipe	
BQ47	148947	Elbow, rubber, fitted up to comm. no. CP50000	1
	154954	Connector, rubber, fitted from comm. no. CP50000 up to CP75000	1
	217841	Pipe Assembly, 5/16-inch o.d. nylon, with threaded fittings, fitted after comm. no. CP75000	1
BQ48	214588	Fuel Return Pipe, front, fitted up to comm. no. CP75000	1
	217891	Fuel Return Pipe Assembly, front, fitted after comm. no. CP75000	1
BQ49	148945	Connector, rubber, 5-inch length, front return pipe to intermediate return pipe	1
BQ50	308953	Fuel Return Pipe, intermediate	1
BQ51	148944	Connector, rubber, three-inch length, intermediate return pipe to rear return pipe, fitted up to comm. no. CP50000	1
	149844	Connector, rubber, three-inch length, intermediate return pipe to rear return pipe, fitted after comm. no. CP50000	1
BQ53	215686	Fuel Return Pipe, rear, fitted up to comm. no. CP50000	1
BQ54	217833	Fuel Return Pipe, rear, fitted after comm. no. CP50000	1
BQ55	600395	Grommet, rubber, sealing hole in trunk floor	1
BQ56	148944	Connector, rubber, three-inch length, rear return pipe to fuel filter vent pipe, fitted up to comm. no. CP50000	1
BQ57	UKC3494	Connector, rubber, rear return pipe to fuel tank return pipe, fitted after comm. no. CP50000	1
BQ58	154315	PIPE ASSEMBLY, fuel return, fitted to fuel tank, after comm. no. CP50000	1
	60176	Nut, tubing, connecting pipe to fuel tank	1
	TL7	Sleeve, tubing, sealing connection	1

(Continued on next page.)

PLATE BQ

FUEL TANK & CONNECTING DETAILS
—P.I. MODELS

TRIUMPH TR6



FUEL TANKS AND CONNECTING DETAILS—P.I. MODELS

Plate No.	Part No.	Description	No. Off
-----------	----------	-------------	---------

FUEL PIPES AND CONNECTING DETAILS—Continued

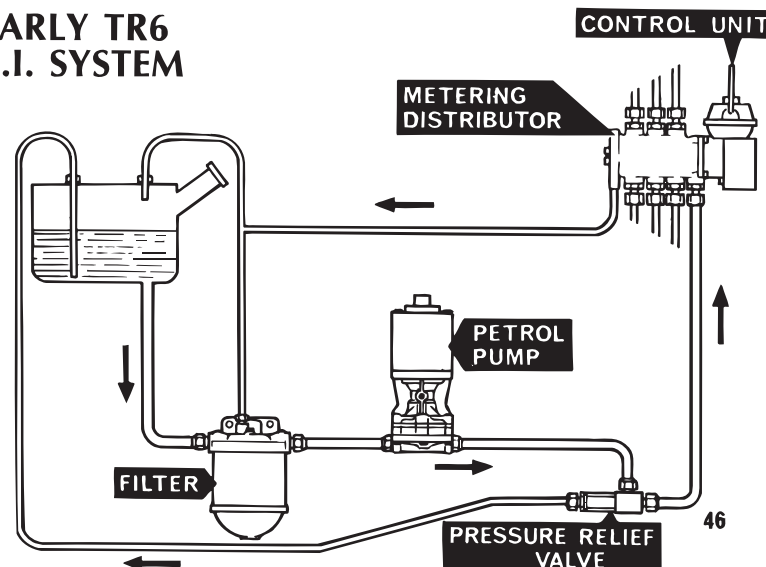
PIPE CLIPS, anchoring various fuel pipes

Please Note: We have attempted to make this list of clips and fittings as complete and accurate as possible, although exact locations and model applications are not always clear from the factory literature. It is suggested that users replace what they have or choose appropriate components from those listed.

BQ59	149810	Clip , securing front fuel delivery pipe to chassis frame, fitted up to comm. no CP5000 approx.	1
BQ60	625521	Clip , double, securing front fuel pipes and brake pipes to chassis frame	1
BQ61	149765	Clip , double, securing fuel pipes and brake pipes to chassis frame	3
BQ62	560772	Rivet , pop, securing clips to chassis frame	6
BQ63	59380	Clip , securing rear fuel return pipe to trunk floor and to fuel tank support	2
BQ64	YZ3503	Screw , self-tapping, securing clip to trunk floor	1
BQ65	YZ3403	Screw , self tapping, securing clip to fuel tank	1
BQ66	119147	Clip , securing rear fuel feed pipe and intermediate fuel return pipe to chassis frame crossmember	1
		Hardware , securing clip to chassis frame	
BQ67	PZ503	Screw , set	1
BQ68	WL205	Washer , lock	1
BQ69	HN2005	Nut	1
BQ70	148820	Clip , double for 3/16-inch and 5/16-inch pipes ("installed at their rear most horizontal point along the chassis side member to prevent fretting against brake pipe.")	1

Plate No.	Part No.	Description	No. Off
-----------	----------	-------------	---------

EARLY TR6 P.I. SYSTEM



LATE TR6 P.I. SYSTEM

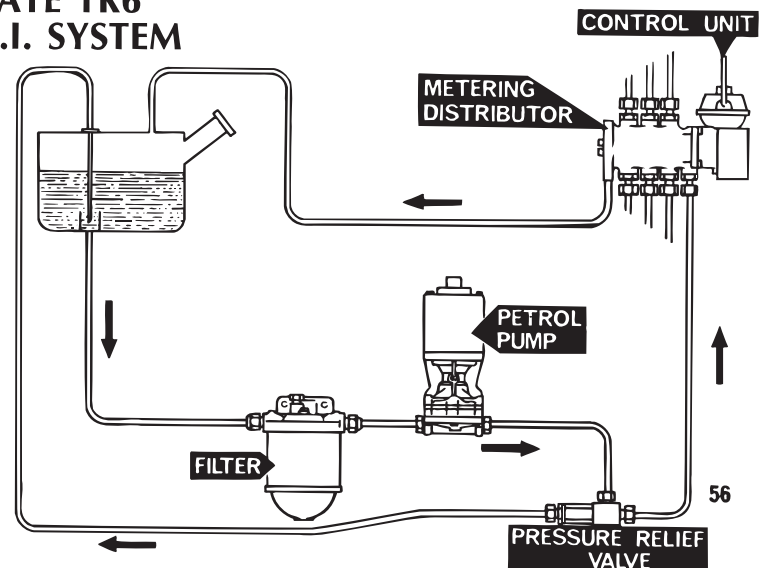
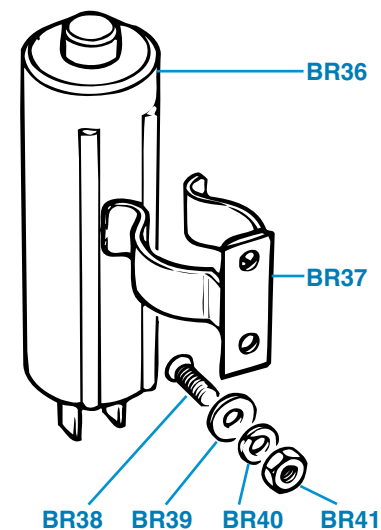
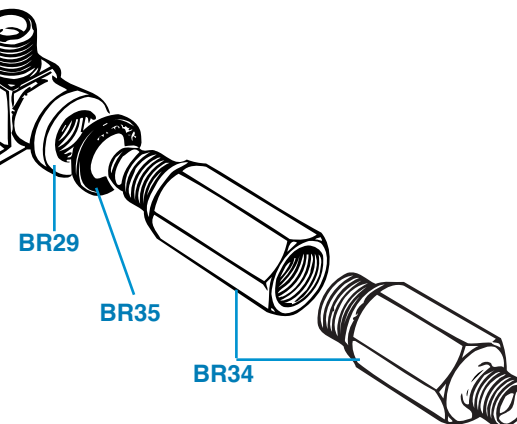
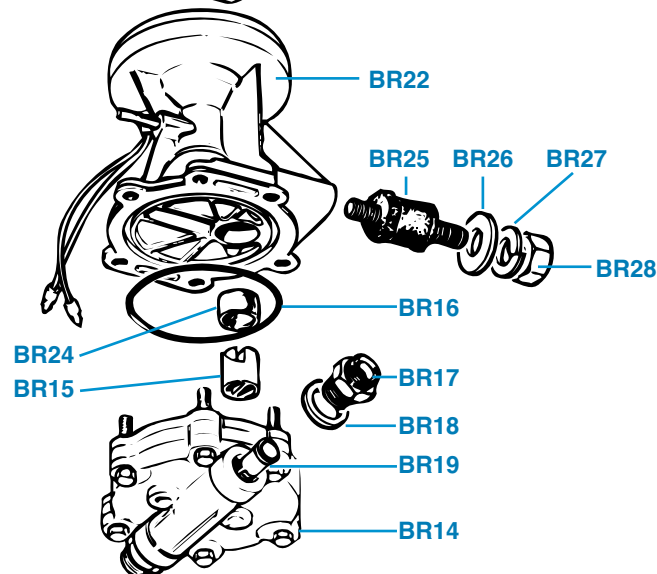
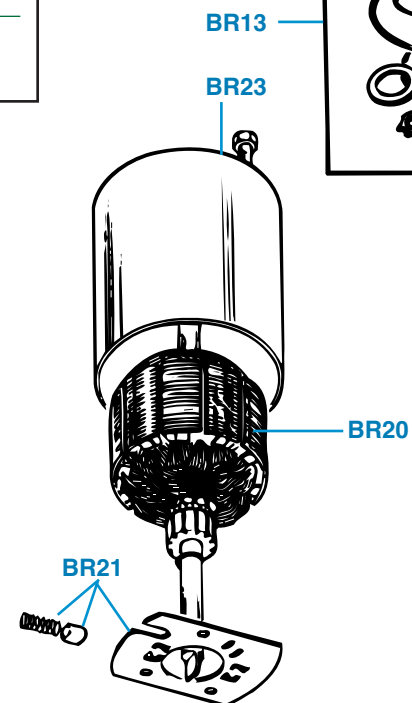
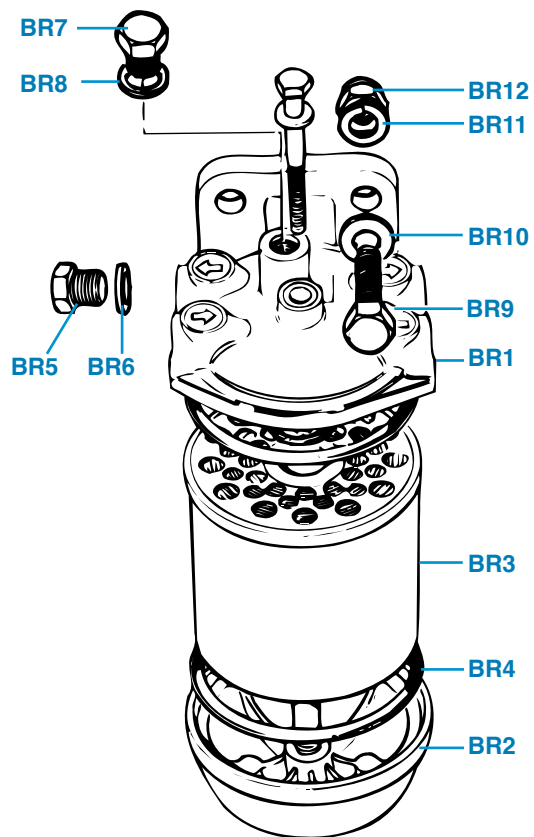


PLATE BR

FUEL FILTER AND FUEL PUMP
—P.I. MODELS

TRIUMPH TR6



FUEL FILTER, FUEL PUMP, FUEL PRESSURE RELIEF VALVE P.I.MODELS

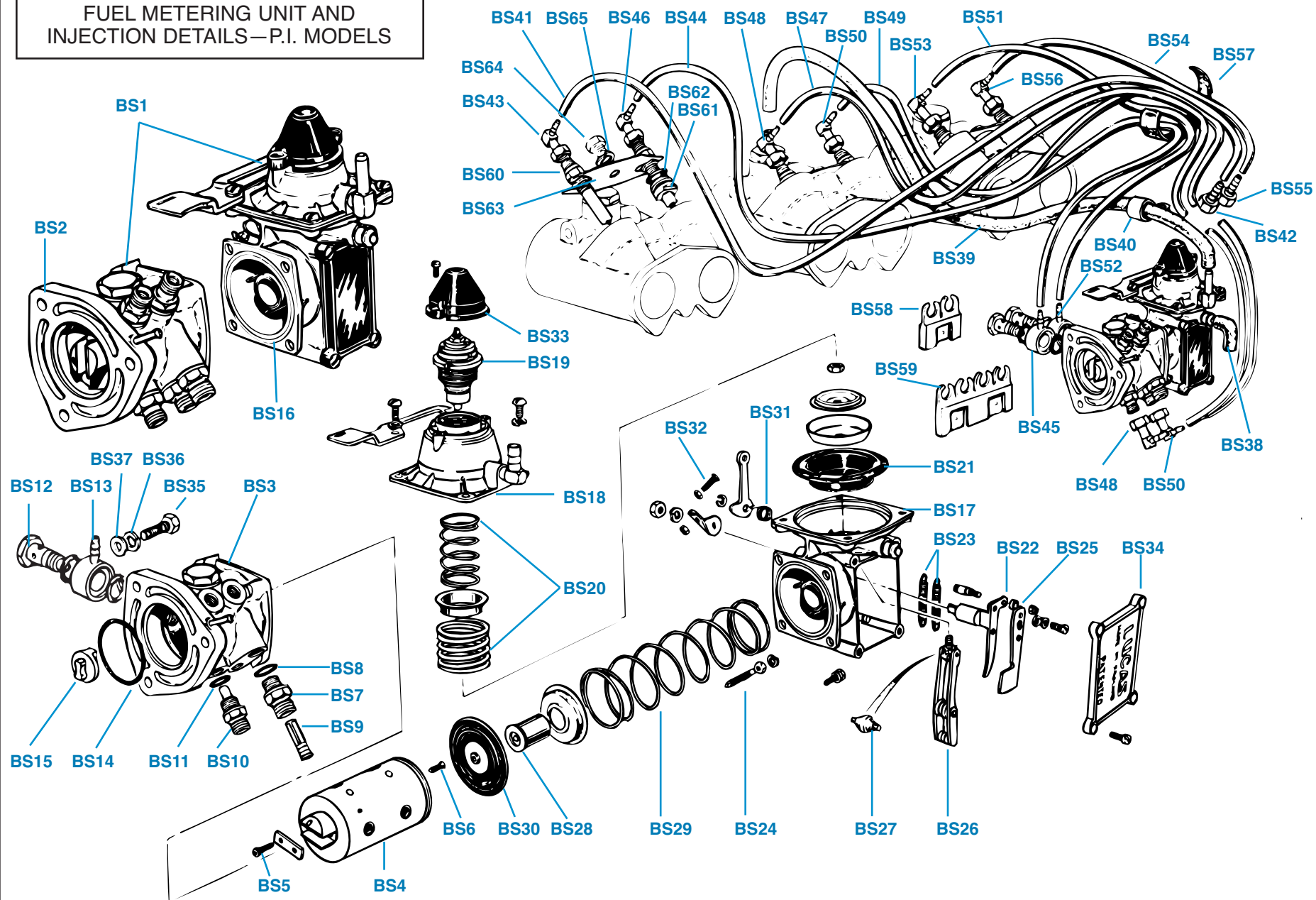
Plate No.	Part No.	Description	No. Off
		FUEL FILTER DETAILS	
	215299	FUEL FILTER ASSEMBLY	1
BR1	520354	Filter Head Assembly	1
BR2	514883	Filter Bowl Assembly	1
BR3	GFE5296	ELEMENT , filter	1
BR4	512147	Ring , sealing	2
		BLANKING DETAILS , front inlet port and rear outlet port	
BR5	151203	Plug , screwed	2
BR6	506682	Washer , copper, sealing plug	2
	517957	Washer , aluminium, sealing plug; alternative to 506682	2
		BLANKING DETAILS , vent pipe drilling in top of filter head	
BR7	153928	Plug	1
BR8	150710	Washer , aluminium, sealing plug	1
		HARDWARE , securing fuel filter to bracket on trunk floor	
BR9	HU908	Screw , set	2
BR10	WP9	Washer , plain	2
BR11	WL209	Washer , lock	2
BR12	HN2009	Nut	2
		FUEL PUMP DETAILS	
	214347	FUEL PUMP AND MOTOR ASSEMBLY	1
BR13	517414	Service Kit , fuel pump and motor assembly	1
	214347R	Factory Rebuilt Pump and Motor Assembly	1
BR14	516919	FUEL PUMP ASSEMBLY	1
BR15	517412	Coupling	1
BR16	517413	Washer , sealing	1
BR17	518632	Connection , inlet or outlet	2
BR18	518495	Washer , sealing connections	2
BR19	LU54732894	Strainer , fuel	1
	516918	MOTOR ASSEMBLY	1
BR20	517415	Armature	1
BR21	LU54701256	Brush Plate and Spring Set	1
BR22	LU54701288	Bracket Assembly , drive end	1
BR23	517418	Bolt , through fixing	2
BR24	517419	Seal , drive shaft	1
		FUEL PUMP MOUNTING DETAILS	
BR25	148779	Mounting Assembly , rubber	3
		HARDWARE , securing mountings to L.H. rear wheelarch	
BR26	WP7	Washer , plain	3
BR27	WL207	Washer , lock	3
BR28	HN2007	Nut	3
	TRFCD146	Bosch Brand Replacement Fuel Pump Assembly ; provides trouble-free service in place of original, original-equipment Lucas brand pump	1

Plate No.	Part No.	Description	No. Off
		T-FITTING, STRAINER, AND PRESSURE RELIEF VALVE DETAILS	
BR29	149773	T-Fitting	1
		MOUNTING DETAILS , T-fitting	
BR30	148779	Mounting Assembly , rubber	2
		HARDWARE , securing mountings to T-fitting and mountings to trunk floor	
BR31	WP7	Washer , plain	4
BR32	WL207	Washer , lock	4
BR33	HN2007	Nut	4
BR34	152066	STRAINER AND PRESSURE RELIEF VALVE , fitted up to body no. 51887CP	1
	152067	Valve , fuel pressure relief	1
	152069	Filter , strainer, for valve	1
	156981	Washer , dowty, between strainer and valve	1
	156160	STRAINER AND PRESSURE RELIEF VALVE , fitted after body no. 51887CP	1
	156167	Valve , fuel pressure relief	1
	152069	Filter , strainer, for valve	1
	156981	Washer , dowty, between strainer and valve	1
BR35	152068	Washer , dowty, between valve assembly and T-fitting	1
		INERTIA CUT OFF SWITCH DETAILS , fitted after body no. 51399CP (L.H.S.) and 52328CP (R.H.S.)	
BR36	153052	Switch , inertia cut-off	1
	UKC1866	Switch , inertia cut-off; alternative to 153052	1
BR37	153109	Clip , retaining switch	1
		HARDWARE , securing clip to body	
BR38	KX4504	Screw , set	2
BR39	WP5	Washer , plain	2
BR40	WL205	Washer , lock	2
BR41	HN2005	Nut	2

PLATE BS

FUEL METERING UNIT AND
INJECTION DETAILS—P.I. MODELS

TRIUMPH TR6



FUEL METERING UNIT AND INJECTIONS DETAILS—P.I.MODELS

Plate No.	Part No.	Description	No. Off
<p>Please Note: You can identify the part number of your metering unit by looking for the part number of the Metering Distributor, which is etched onto the mounting flange, and the part number of the Control Unit, which is etched onto the underside of the unit. It is likely that other combinations of metering units and control units may be fitted, either from the factory or as spare parts. If you are unable to find the exact combination now on your car in the above list, then you should choose the unit specified for the year of your car.</p>			
BS1	LU54073029	FUEL METERING UNIT , fitted to 1969 and 1970 models	1
	LU73059	Metering Distributor	1
	LU73077	Control Unit	1
	309154R	Factory Rebuilt Metering Unit , including metering distributor and control unit, compatible with the above listings	1
	LU54073050	FUEL METERING UNIT , fitted to 1971 models	1
	LU73110	Metering Distributor	1
	LU73108	Control Unit	1
	312070R	Factory Rebuilt Metering Unit , including metering distributor and control unit, compatible with the above listings	1
	LU54073053	FUEL METERING UNIT , fitted to 1972 models	1
	LU73124	Metering Distributor	1
	LU73108	Control Unit	1
	312097R	Factory Rebuilt Metering Unit , including metering distributor and control unit, compatible with the above listings	1
	LU54073069	FUEL METERING UNIT , fitted to U.K. models after 1972	1
	LU73124	Metering Distributor	1
	LU73138	Control Unit	1
	RKC220R	Factory Rebuilt Metering Unit , including metering distributor and control unit, compatible with the above listings	1
	LU54073065	FUEL METERING UNIT , fitted to non-U.K. models after 1972	1
	LU73136	Metering Distributor	1
	LU73134	Control Unit	1
	RKC94R	Factory Rebuilt Metering Unit , including metering distributor and control unit, compatible with the above listings	1
BS2	LU73059	METERING DISTRIBUTOR DETAILS	
		METERING DISTRIBUTOR , fitted to 1969 and 1970 models	1
	LU54730845	Body , metering distributor	1
	LU54730762	ROTOR AND SLEEVE ASSEMBLY	1
	LU54732651	Screw , cap	2
	LU54733381	Screw , countersunk	2

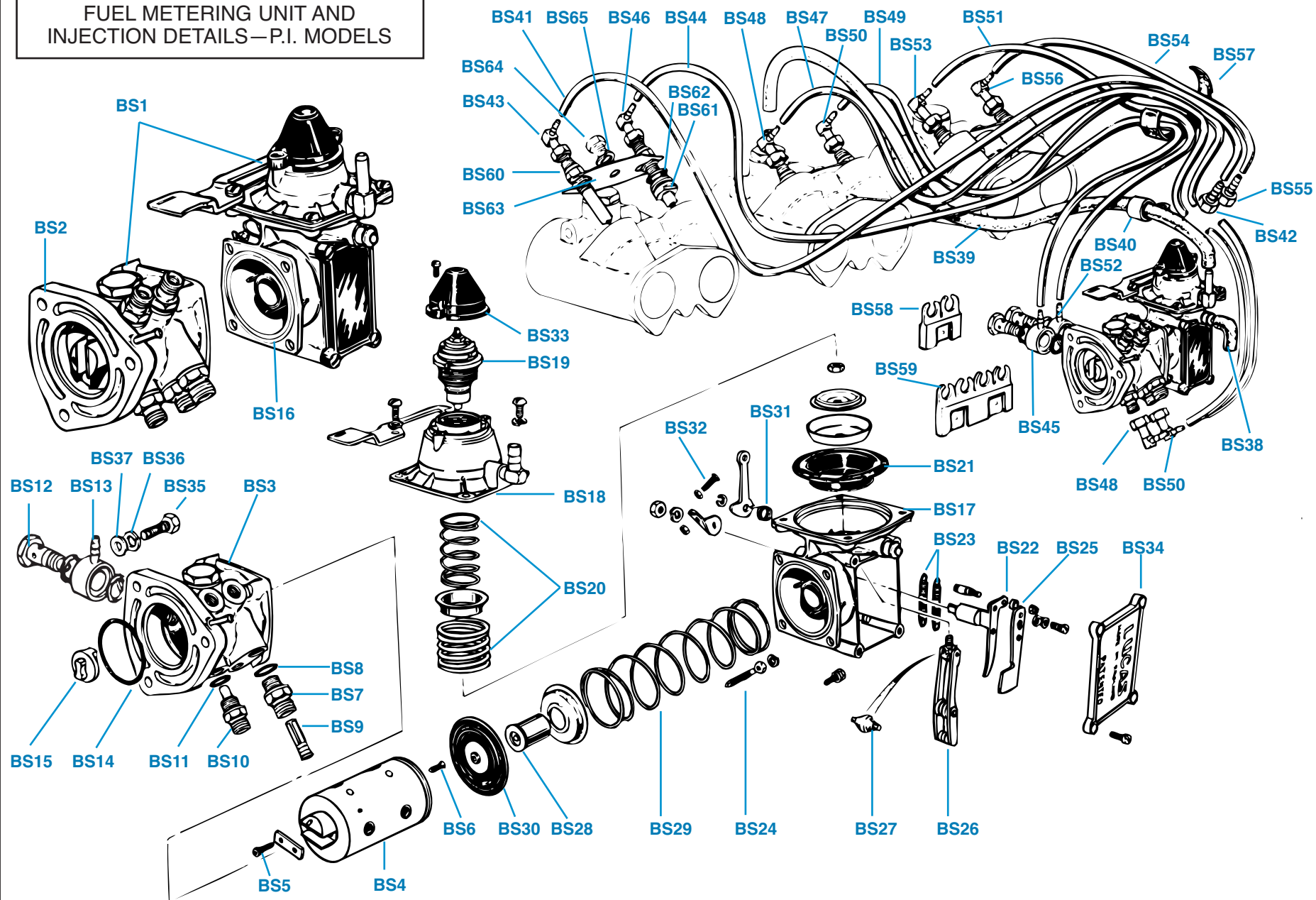
Plate No.	Part No.	Description	No. Off
METERING DISTRIBUTOR DETAILS-Continued			
INLET DETAILS			
BS7	LU54732892	Connection , inlet	1
BS8	LU54730984	Washer , inlet sealing	1
BS9	LU54732894	Strainer	1
OUTLET DETAILS			
BS10	LU54732911	Connection , outlets no. one, six, three, and four	4
BS11	LU54730983	Washer , sealing, outlets	4
BS12	LU54730900	Bolt , banjo, outlets no. two and five	2
BS13	LU54731886	Connection , banjo fir tree, outlets no. two and five	2
	LU54733424	"O" RING KIT	1
BS14	149486	"O" Ring , sealing unit to mounting pedestal	1
BS15	LU54730757	Coupling , drive	1
	LU73110	METERING DISTRIBUTOR , fitted to 1971 models	1
	LU54730845	Body , metering distributor	1
	LU54734010	ROTOR AND SLEEVE ASSEMBLY	1
	LU54114964	Screw , cap	2
	LU54733381	Screw , countersunk	2
INLET DETAILS			
	LU54732892	Connection , inlet	1
	LU54730984	Washer , inlet sealing	1
	LU54732894	Strainer	1
OUTLET DETAILS			
	LU54732911	Connection , outlets no. one, six, three, and four	4
	LU54730983	Washer , sealing, outlets	4
	LU54730900	Bolt , banjo, outlets no. two and five	2
	LU54731886	Connection , banjo fir tree, outlets no. two and five	2
	LU54733424	"O" RING KIT	1
	149486	"O" Ring , sealing unit to mounting pedestal	1
	LU54734049	Coupling , drive	1
	LU73124	METERING DISTRIBUTOR , fitted to 1972 models	1
	LU54730845	Body , metering distributor	1
	LU54735521	ROTOR AND SLEEVE ASSEMBLY	1
	LU54115706	Screw , cap	2
	LU54733381	Screw , countersunk	2
	LU54735065	Circlip , sleeve retaining	A/R

(Continued on next page.)

PLATE BS

FUEL METERING UNIT AND
INJECTION DETAILS—P.I. MODELS

TRIUMPH TR6



FUEL METERING UNIT AND INJECTION DETAILS—P.I. MODELS

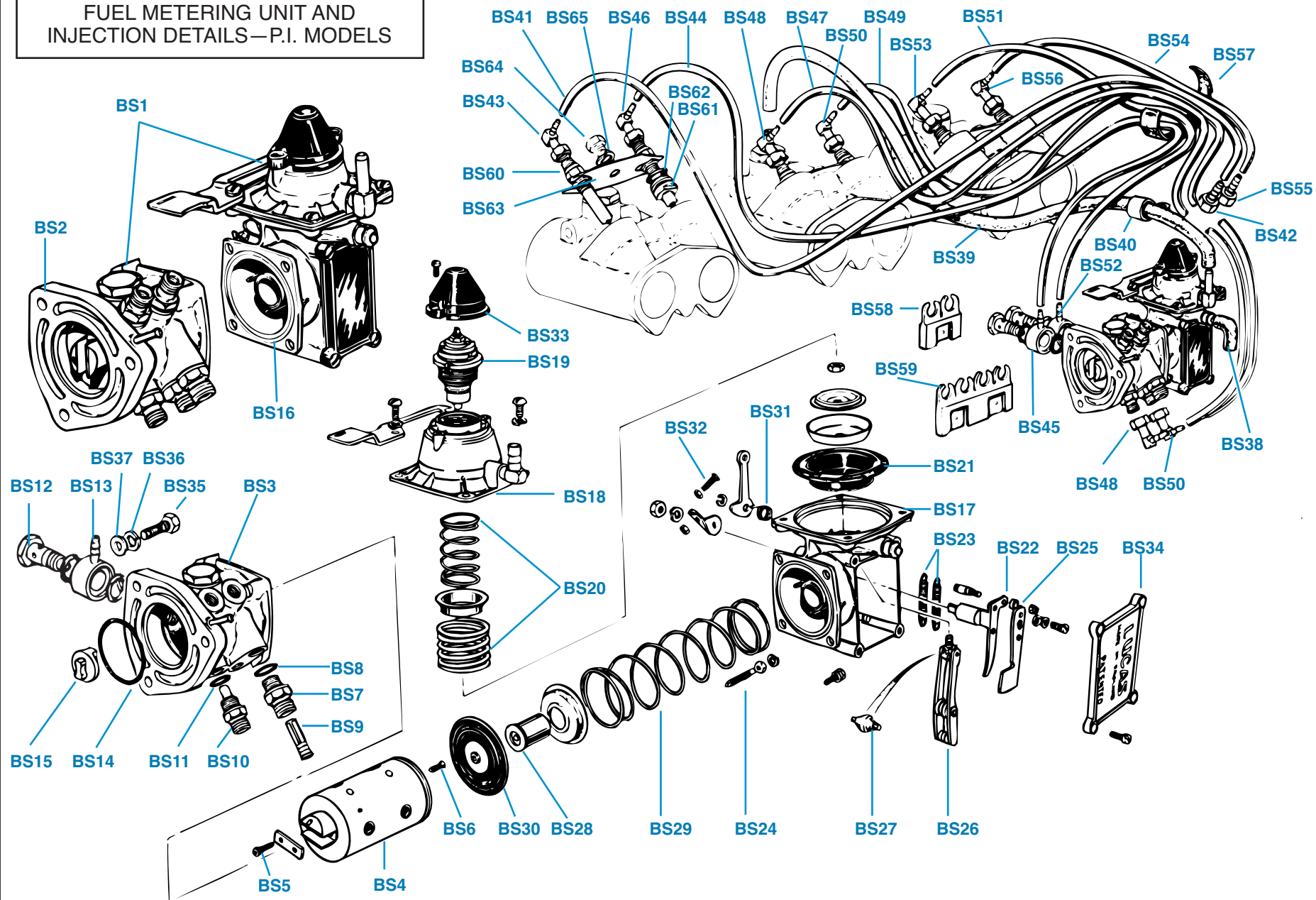
Plate No.	Part No.	Description	No. Off	Plate No.	Part No.	Description	No. Off
METERING DISTRIBUTOR DETAILS—Continued				CONTROL UNIT DETAILS			
METERING DISTRIBUTOR—Continued				CONTROL UNIT, fitted to 1969 and 1970 models			
INLET DETAILS				Body			
LU60600191		Connection, inlet	1	BS16	LU73077		1
LU54730984		Washer, inlet sealing	1	BS17	LU54730831		1
LU54732894		Strainer	1	BS18	LU54730838	Chamber, depression	1
OUTLET DETAILS				BS19	LU74733423	Calibration Screw Assembly	1
LU54736390		Connection, outlets no. one, six, three, and four	4	BS20	LU54734128	Calibration Spring Set, comprising inner and outer springs	1
LU54730983		Washer, sealing, outlets	4	BS21	LU54732970	Diaphragm, depression chamber	1
LU54730900		Bolt, banjo, outlets no. two and five	2	BS22	LU54730767	Pivot Shaft and Cam Carrier Assembly	1
LU54734699		Connection, banjo, outlets no. two and five	2	BS23	LU54733723	Spring Set, cam carrier	1
LU54733424		"O" RING KIT	1	BS24	LU54730768	Screw, setting, full load	1
149486		"O" Ring, sealing unit to mounting pedestal	1	BS25	LU54730789	Cam (Datum Track), fuel volume control	1
LU54734049		Coupling, drive	1	BS26	LU54733398	Linkage and Roller Assembly, operating cam follower	1
LU73124		METERING DISTRIBUTOR, fitted to U.K. models after 1972	1	BS27	LU54733422	Bearing, spherical	1
LU73136		METERING DISTRIBUTOR, fitted to non-U.K. models after 1972	1	BS28	LU54733377	Cam Follower	1
ROTOR AND SLEEVE ASSEMBLY				BS29	LU54732974	Spring, balance, cam follower	1
LU54735521		Screw, cap	2	BS30	LU54730788	Diaphragm Seal, between control unit and metering distributor	1
LU54115706		Screw, countersunk	2	BS31	LU54733368	Spring, return, choke control lever	1
LU54733381		Circlip, sleeve retaining	A/R	BS32	LU54730836	Screw, choke adjusting	1
LU54735065				BS33	LU54730840	Cover, plastic, top	1
INLET DETAILS				BS34	LU54730842	Cover, plastic, side	1
LU60600191		Connection, inlet	1		LU54733322	Sundry Parts Set	1
LU54732894		Strainer	1		LU73108	CONTROL UNIT, fitted to 1971 and 1972 models	1
OUTLET DETAILS					LU54730831	Body	1
LU54736390		Connection, outlets no. one, six, three, and four	4		LU54730838	Chamber, depression	1
LU54730900		Bolt, banjo, outlets no. two and five	2		LU54733423	Calibration Screw Assembly	1
LU54734699		Connection, banjo fir tree, outlets no. two and five	2		LU54734128	Calibration Spring Set, comprising inner and outer springs	1
LU54733424		"O" RING KIT	1		LU54732970	Diaphragm, depression chamber	1
149486		"O" Ring, sealing unit to mounting pedestal	1		LU54730767	Pivot Shaft and Cam Carrier Assembly	1
LU54734049		Coupling, drive	1		LU54735371	Spring Set, cam carrier	1
					LU54730768	Screw, setting, full load	1
					LU54730789	Cam (Datum Track), fuel volume control	1
					LU54733398	Linkage and Roller Assembly, operating cam follower	1
					LU54733422	Bearing, spherical	1
					LU54735056	Cam Follower	1
					LU54732974	Spring, balance, cam follower	1
					LU54730788	Diaphragm Seal, between control unit and metering distributor	1
					LU54733368	Spring, return, choke control lever	1
					LU54730836	Screw, choke adjusting	1
					LU54730840	Cover, plastic, top	1
					LU54730842	Cover, plastic, side	1
					LU54733322	Sundry Parts Set	1

(Continued on next page.)

PLATE BS

FUEL METERING UNIT AND
INJECTION DETAILS—P.I. MODELS

TRIUMPH TR6



FUEL METERING UNIT AND INJECTION DETAILS—P.I. MODELS

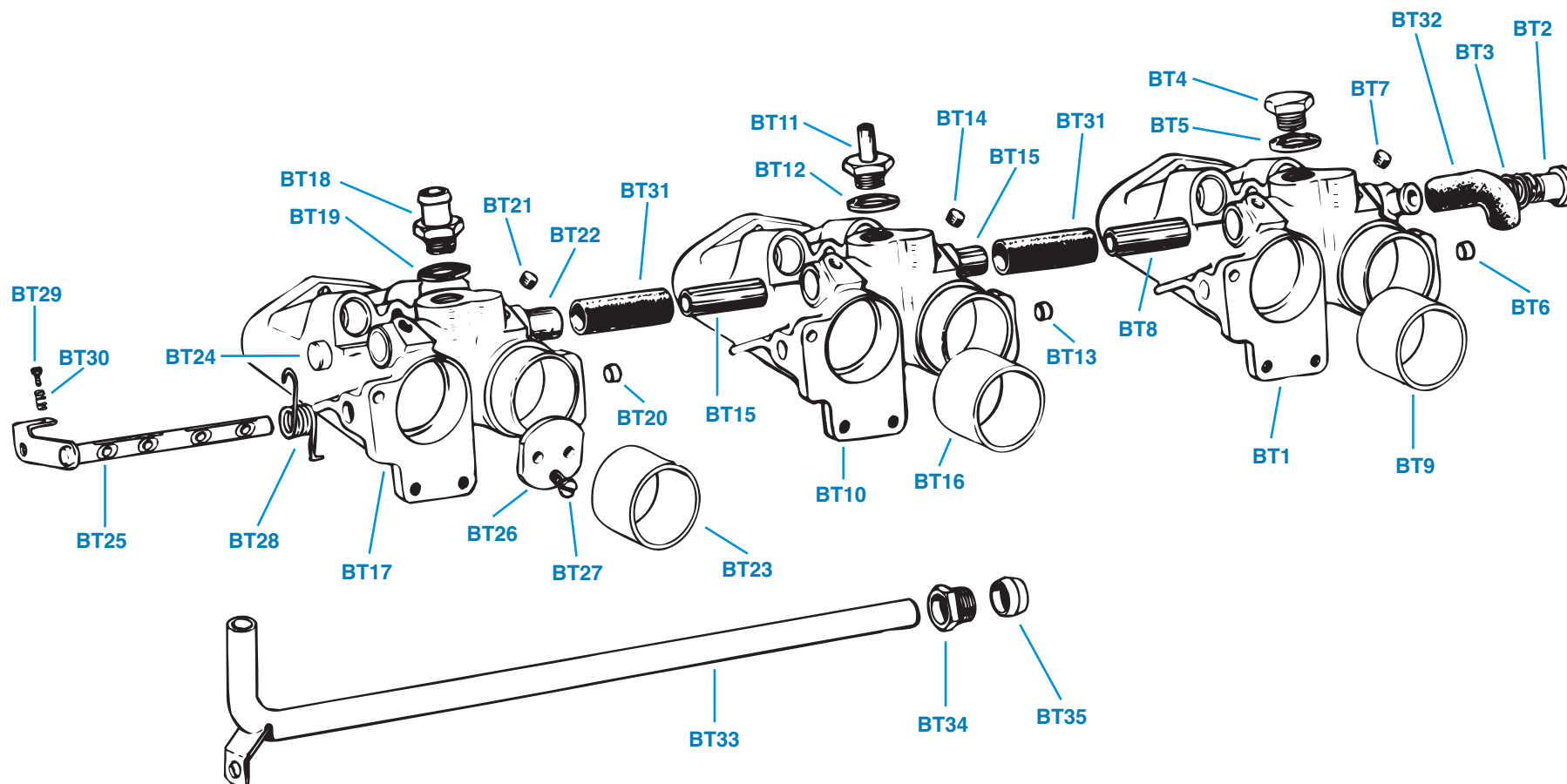
Plate No.	Part No.	Description	No. Off
		CONTROL UNIT DETAILS-Continued	
	LU73138	CONTROL UNIT , fitted to U.K. models after 1972	1
	LU73134	CONTROL UNIT , fitted to non-U.K. models after 1972	1
	LU54730831	Body	1
	LU54730838	Chamber , depression	1
	LU54737045	Calibration Screw Assembly	1
	LU60600295	Calibration Spring Set , comprising inner and outer springs	1
	LU54732970	Diaphragm , depression chamber	1
	LU54730767	Pivot Shaft and Cam Carrier Assembly	1
	LU54735371	Spring Set , cam carrier	1
	LU54730768	Screw , setting, full load	1
	LU54730789	Cam (Datum Track) , fuel volume control	1
	LU54733398	Linkage and Roller Assembly , operating cam follower	1
	LU54733422	Bearing , spherical, securing linkage to diaphragm	1
	LU54735035	Cam Follower	1
	LU54733628	Spring , balance, outlets no. one, six, three, and four	4
	LU54730788	Diaphragm Seal , between control unit and metering distributor	1
	LU54733368	Spring , return, choke control lever	1
	LU54733820	Screw , choke adjusting	1
	LU54730840	Cover , plastic, top	1
	LU54730842	Cover , plastic, side	1
	LU54733322	Sundry Parts Set	1
		HARDWARE , securing fuel metering unit to distributor pedestal	
BS35	HU707	Screw , set	3
BS36	WL207	Washer , lock	3
BS37	WP7	Washer , plain	3
BS38	148946	Elbow , rubber, air inlet balance tube	1
BS39	149609	Hose , vacuum, from intake manifold to control unit depression chamber	1
BS40	514048	Clip , securing vacuum hose to rocker cover rear mounting stud	1
		INJECTOR PIPE DETAILS	
	149566	INJECTOR PIPE ASSEMBLY , no. 1, fitted up to comm. no. CR1	1
	UKC351	INJECTOR PIPE ASSEMBLY , no. 1, fitted after comm. no. CR1	1
BS41	517305	Tube , nylon, 30 1/4-inch length (One yard supplied.)	1
BS42	517306	Nipple and Nut Assembly	1
BS43	517307	Elbow Fitting	1
	149586	INJECTOR PIPE ASSEMBLY , no. 2, fitted up to comm. no. CR1	1
	UKC361	INJECTOR PIPE ASSEMBLY , no. 2, fitted after comm. no. CR1	1
BS44	517305	Tube , nylon, 31-inch length (One yard supplied.)	1

Plate No.	Part No.	Description	No. Off
		INJECTOR PIPE DETAILS-Continued	
BS45	517308	Banjo Fitting	1
BS46	517307	Elbow Fitting	1
	149576	INJECTOR PIPE ASSEMBLY , no. 3, fitted up to comm. no. CR1	1
	UKC371	INJECTOR PIPE ASSEMBLY , no. 3, fitted after comm. no. CR1	1
BS47	517305	Tube , nylon, 30-inch length (One yard supplied.)	1
BS48	517307	Elbow Fitting , fitted to both ends of no. 3 pipe	2
	149575	INJECTOR PIPE ASSEMBLY , no. 4, fitted up to comm. no. CR1	1
	UKC372	INJECTOR PIPE ASSEMBLY , no. 4, fitted after comm. no. CR1	1
BS49	517305	Tube , nylon, 29 1/8-inch length (One yard supplied.)	1
BS50	517307	Elbow Fitting , fitted to both ends of no. 4 pipe	2
	149585	INJECTOR PIPE ASSEMBLY , no. 5, fitted up to comm. no. CR1	1
	UKC362	INJECTOR PIPE ASSEMBLY , no. 5, fitted after comm. no. CR1	1
BS51	517305	Tube , nylon, 21 3/4-inch length (One yard supplied.)	1
BS52	517308	Banjo Fitting	1
BS53	517307	Elbow Fitting	1
	149565	INJECTOR PIPE ASSEMBLY , no. 6, fitted up to comm. no. CR1	1
	UKC352	INJECTOR PIPE ASSEMBLY , no. 6, fitted after comm. no. CR1	1
BS54	517305	Tube , nylon, 20 1/4-inch length (One yard supplied.)	1
BS55	517306	Nipple and Nut Assembly	1
BS56	517307	Elbow Fitting	1
		INJECTOR PIPE CLIPS	
BS57	145891	Clip , fir tree, bundling pipes, fitted up to comm. no. CR1	3
BS58	148672	Clip , nylon, double, fitted up to comm. no. CR1	2
BS59	148673	Clip , nylon, quadruple, fitted after comm. no. CR1	3
		INJECTOR DETAILS	
BS60	149512	Injector , fitted earlier	6
	149512R	Rebuilt Injector	6
	157913	Injector , fitted later	6
	157913R	Rebuilt Injector	6
BS61	516922	BLOCK , insulating	6
BS62	149511	"O" Ring	6
BS63	149308	Plate , clamping injectors to intake manifolds	3
		HARDWARE , securing clamping plates to intake manifolds	
BS64	HU853	Screw , set	3
BS65	WL208	Washer , lock	3

PLATE BT

INTAKE MANIFOLDS—P.I. MODELS,
1969 UP TO 1972

TRIUMPH TR6



INTAKE MANIFOLDS—P.I. MODELS, 1969 UP TO 1972

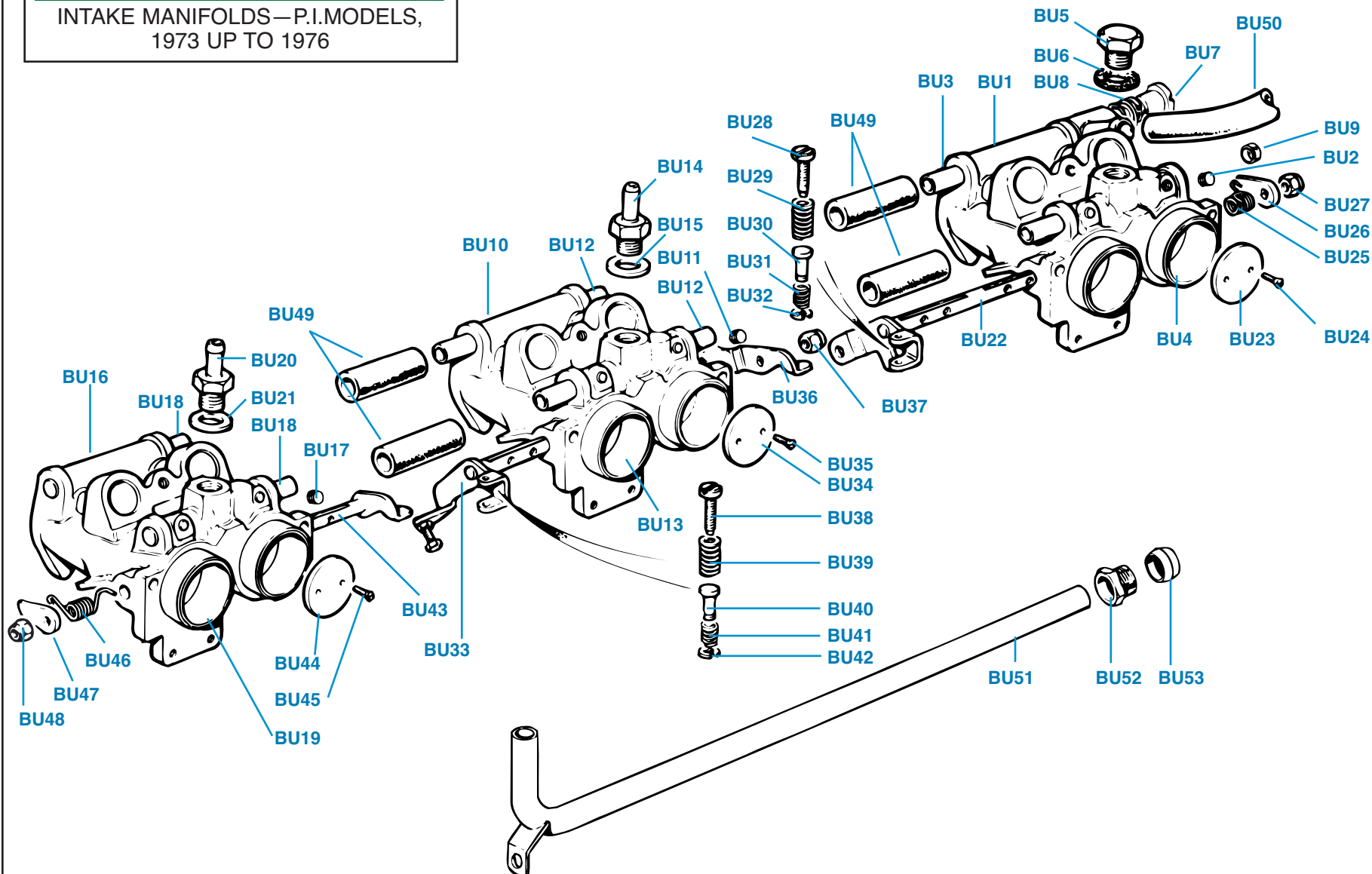
Plate No.	Part No.	Description	No. Off
BT1	152807	MANIFOLD ASSEMBLY , intake, front, fitted up to engine no. CR1	1
BT2	152685	Screw , metering, air valve	1
BT3	152684	Spring , metering screw	1
BT4	122132	Plug , blanking	1
BT5	WF513	Washer , fibre	1
BT6	148986	Plug , throttle spindle bore	1
BT7	PU852	Plug , blanking, in cross drilling	2
BT8	148900	Pipe , balance	1
BT9	149374	Tube , air inlet	1
BT10	149651	MANIFOLD ASSEMBLY , intake, center, fitted up to engine no. CR1	1
BT11	149764	Adaptor , metering control hose	1
BT12	WF513	Washer , fibre	1
BT13	148986	Plug , throttle spindle bore	1
BT14	PU852	Plug , blanking, cross drilling	2
BT15	148900	Pipe , balance	2
BT16	149374	Tube , air inlet	2
BT17	149659	MANIFOLD ASSEMBLY , intake, rear, fitted up to engine number CR1	1
BT18	149487	Adaptor , brake servo	1
BT19	WF513	Washer , fibre	1
BT20	148986	Plug , throttle spindle bore	1
BT21	PU852	Plug , blanking, in cross drilling	2
BT22	148900	Pipe , balance	1
BT23	149374	Tube , air inlet	2
BT24	144537	Plug , bucket, rear	1
		THROTTLE SPINDLES AND PLATES	
BT25	152185	Spindle , throttle	3
BT26	148989	Plate , throttle	6
BT27	148988	Screw , set, securing throttle plates to throttle spindles	12
BT28	148987	Spring , throttle return	3
BT29	149805	Screw , set, slow running adjustment	3
BT30	149552	Spring , on screws	3
BT31	148899	Connection , balance pipes	2
BT32	152855	Hose , between front intake manifold and air manifold	1
		Please Note: Manifold gaskets and hardware to secure manifolds to cylinder heads are listed along with exhaust manifolds in Section BY	
		WATER RETURN PIPE DETAILS-cars with heaters only	
BT33	214404	Pipe , heater water return	1
BT34	101302	Nut , tubing, securing pipe to adaptor on water pump housing	1
BT35	TL11	Sleeve , tubing, sealing connection	1

Plate No.	Part No.	Description	No. Off
-----------	----------	-------------	---------

PLATE BU

INTAKE MANIFOLDS—P.I. MODELS,
1973 UP TO 1976

TRIUMPH TR6



INTAKE MANIFOLDS—P.I. MODELS, 1973 UP TO 1976

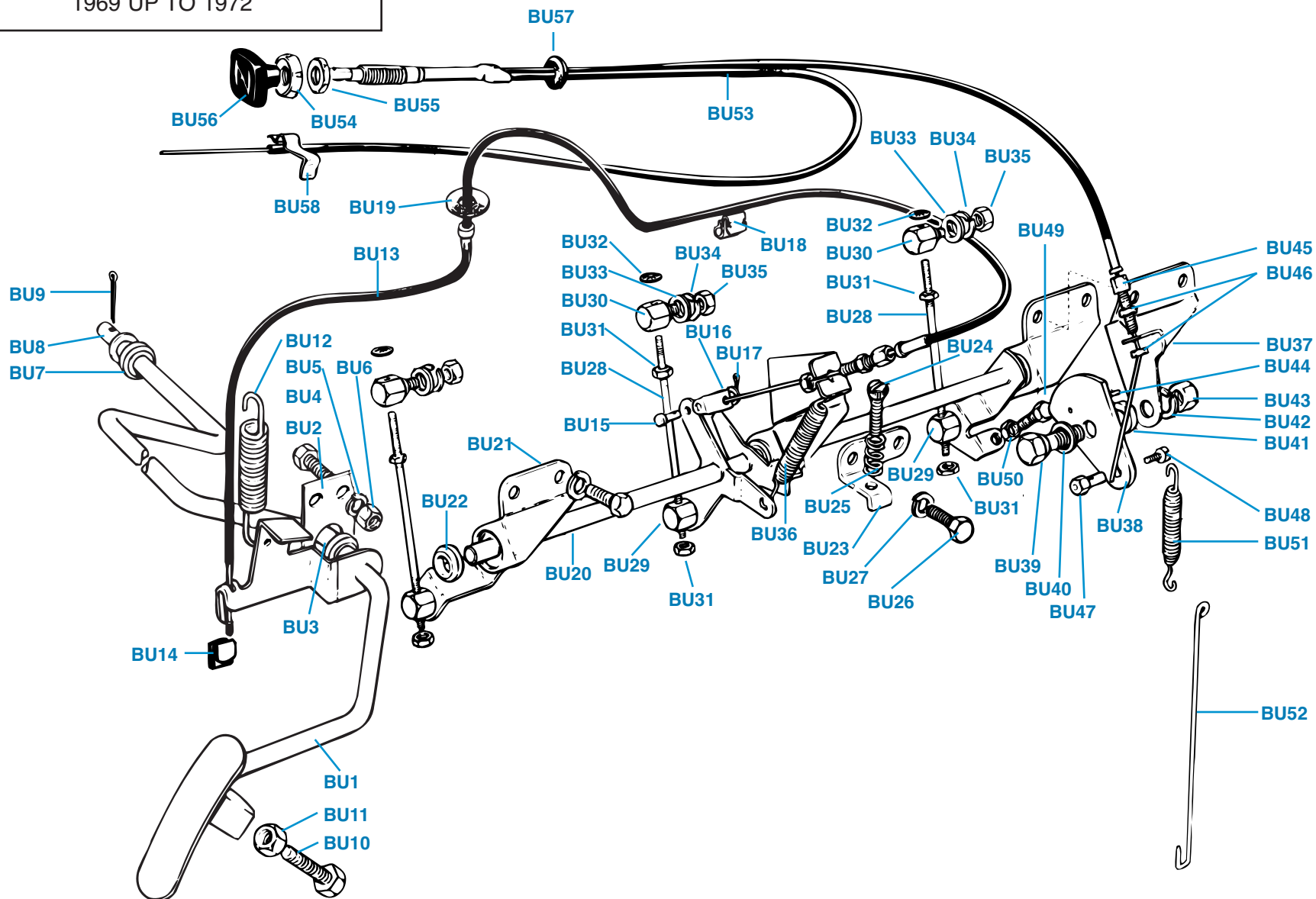
Plate No.	Part No.	Description	No. Off
BU1	160300	MANIFOLD ASSEMBLY , intake, front, fitted after engine number CR1	1
BU2	PU852	Plug , blanking, in cross drillings	2
BU3	148900	Pipe , balance	2
BU4	149374	Tube , air inlet	2
BU5	122132	Plug , blanking	1
BU6	WF513	Washer , fibre	1
BU7	152685	Screw , metering, idling control	1
BU8	152684	Spring , metering	1
BU9	144537	Plug , bucket, front manifold	1
BU10	160302	MANIFOLD ASSEMBLY , intake, center, fitted after engine no. CR1	1
BU11	PU852	Plug , blanking, in cross drilling	2
BU12	148900	Pipe , balance	4
BU13	149374	Tube , air inlet	2
BU14	149764	Adaptor , metering pump control hose	1
BU15	WF513	Washer , fibre	1
BU16	160303	MANIFOLD ASSEMBLY , intake, rear, fitted after engine number CR1	1
BU17	PU852	Plug , blanking, in cross drillings	2
BU18	148900	Pipe , balance	2
BU19	149374	Tube , air inlet	2
BU20	149487	Adaptor , brake servo hose	1
BU21	WF513	Washer , fibre	1
		THROTTLE DETAILS	
		THROTTLE DETAILS , front manifold	
BU22	160247	Throttle Spindle and Lever Assembly	1
BU23	160109	Plate , throttle	2
BU24	108349	Screw , securing plates to spindle	4
BU25	UKC663	Spring , return	1
BU26	160251	Lever	1
BU27	TN3207	Nut , nyloc, securing lever and spring to throttle spindle	1
BU28	UKC550	Screw , set	1
BU29	160229	Spring	1
BU30	160259	Pin	1
BU31	160230	Spring , link pin	1
BU32	160301	Circlip	1

Plate No.	Part No.	Description	No. Off
		THROTTLE DETAILS-Continued	
		THROTTLE DETAILS , center manifold	
BU33	160246	Throttle Spindle and Lever Assembly	1
BU34	160109	Plate , throttle	2
BU35	108349	Screw , securing plates to spindle	4
BU36	160250	Lever	1
BU37	TN3207	Nut , nyloc, securing lever to throttle spindle	1
BU38	UKC550	Screw , set	1
BU39	160229	Spring	1
BU40	160259	Pin	1
BU41	160230	Spring , link pin	1
BU42	160301	Circlip	1
		THROTTLE DETAILS , rear manifold	
BU43	160248	Throttle Spindle and Lever Assembly	1
BU44	160109	Plate , throttle	2
BU45	108349	Screw , securing plates to spindle	4
BU46	UKC664	Spring , return	1
BU47	160251	Lever	1
BU48	TN3207	Nut , nyloc, securing lever and spring to throttle spindle	1
BU49	148899	Connection , balance pipes	4
BU50	160242	Hose , between air valves and air manifold	1
		Please Note: Manifold gaskets and hardware to secure manifolds to cylinder heads are listed along with exhaust manifolds in Section BY.	
		WATER RETURN PIPE DETAILS-cars with heaters only	
BU51	214404	Pipe , heater water return	1
BU52	101302	Nut , tubing, securing pipe to adaptor	1
BU53	TL11	Sleeve , tubing, sealing connection	1

PLATE BV

ACCELERATOR PEDAL AND
THROTTLE LINKAGE—P.I. MODELS,
1969 UP TO 1972

TRIUMPH TR6



ACCELERATOR PEDAL & THROTTLE LINKAGE—P.I. MODELS, 1969 UP TO 1972

Plate No.	Part No.	Description	No. Off
ACCELERATOR PEDAL DETAILS			
BV1	214420	Accelerator Pedal Assembly , R.H.S.	1
	148951	Accelerator Pedal Assembly , L.H.S.	1
BV2	148526	BEARING PLATE ASSEMBLY , R.H.S.	1
	148954	BEARING PLATE ASSEMBLY , L.H.S.	1
BV3	138490	Bearing , nylon, pedal shaft, mounted in plate	1
		HARDWARE , securing bearing plate assembly to pedal box	
BV4	HU705	Screw , set	2
BV5	WL207	Washer , lock	2
BV6	HN2007	Nut	2
BV7	138490	Bearing , nylon, pedal shaft, mounted in hole in bulkhead	1
		HARDWARE , retaining and locating pedal shaft	
BV8	WP9	Washer , plain	1
BV9	PC9	Pin , cotter	1
		PEDAL STOP DETAILS , R.H.S.	
BV10	HU816	Screw , set	1
BV11	HN2008	Nut , locking screw	1
BV12	149793	Spring , pedal return	1
		PEDAL STOP DETAILS , L.H.S.	
	HU708	Screw , set	1
	JN2108	Nut , jam, locking screw	1
	27645	Spring , pedal return	1
		THROTTLE CONTROL CABLE DETAILS	
BV13	149005	Throttle Control Cable Assembly , R.H.S.	1
	149004	Throttle Control Cable Assembly , L.H.S.	1
BV14	613766	Clip , edge, retaining cable end to accelerator pedal, R.H.S.	1
	149042	Clip , push-on, retaining cable end to accelerator pedal, L.H.S.	1
		HARDWARE , securing cable end to throttle lever	
BV15	PJ8504	Pin , joint	1
BV16	WP5	Washer , plain	1
BV17	PC5	Pin , cotter	1
BV18	610562	Clip , cable to R.H. valance, R.H.S.	1
	149725	Retainer , securing cable to dash shelf, L.H.S. only	1
BV19	131492	Washer , sealing hole in dash shelf	1
	516510	P-Clip , retaining cable to battery fixing rods, L.H.S. only	2

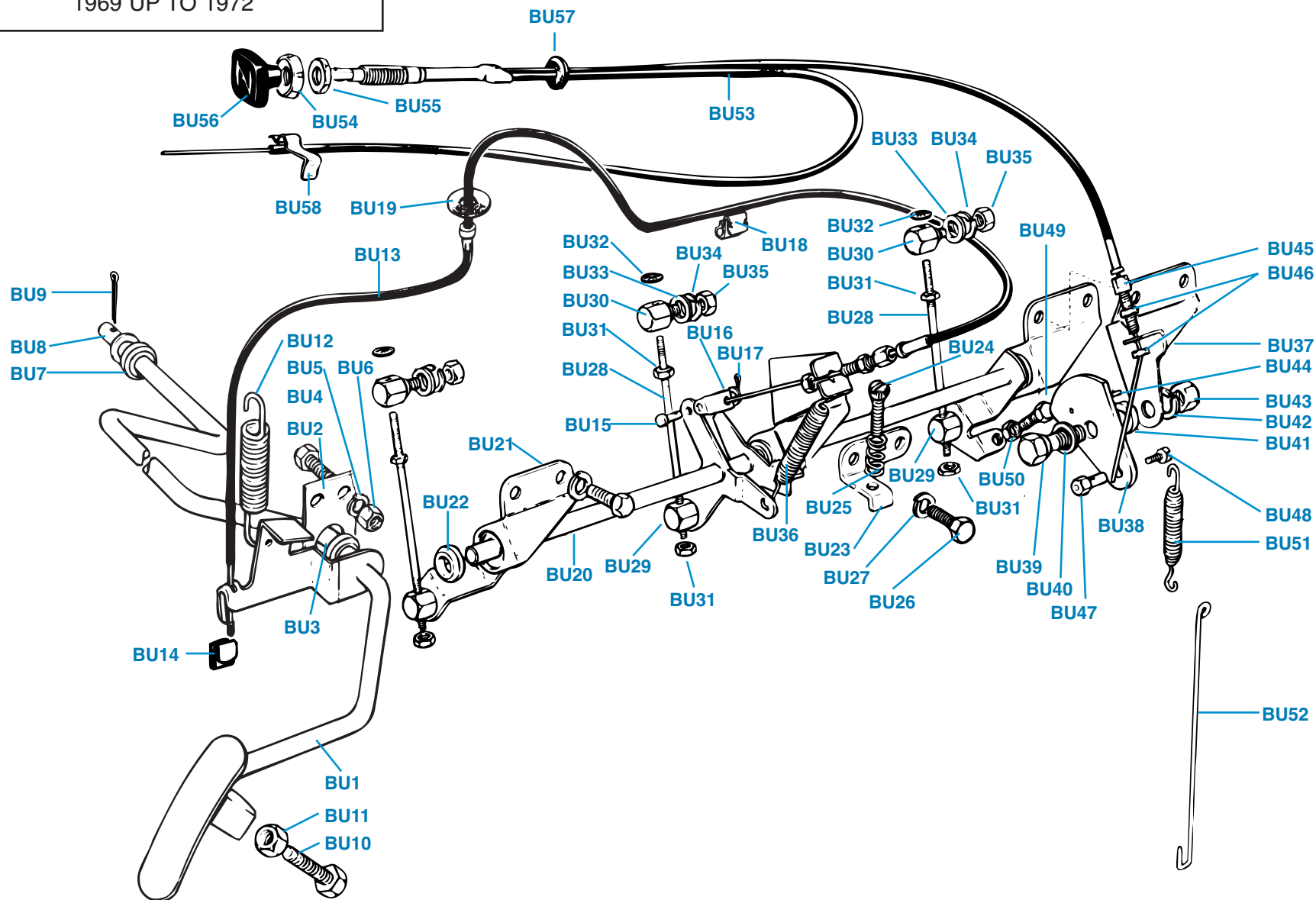
Plate No.	Part No.	Description	No. Off
COUNTERSHAFT DETAILS			
BV20	149604	Countershaft Assembly , fitted up to engine number CP50000	1
	153978	Countershaft Assembly , fitted after engine number CP50000	1
BV21	148927	Bearing Bracket Assembly , securing countershaft to manifold	2
BV22	138490	Bearing , nylon, countershaft pivot	2
BV23	149618	Bracket , throttle stop	1
BV24	PT508	Screw , set, throttle stop adjusting	1
BV25	149552	Spring , on set screw	1
		HARDWARE , securing brackets to intake manifolds	
BV26	HU705	Screw , set	6
BV27	WL207	Washer , lock	6
		THROTTLE LINK DETAILS , up to engine no. CP26804	
	149537	Link , connecting, throttle, center	1
	149536	Swivel Post , center link, upper	1
	149535	Swivel Post , center link, lower	1
	149537	Link , connecting, throttle, front and rear	1
	149780	Trunnion , front and rear links, upper	2
	149535	Swivel Post , front and rear links, lower	2
	HN2005	Nut , securing upper swivel post and upper trunnions to connecting links	5
		HARDWARE , securing trunnions and swivel posts to countershaft levers and to throttle levers	
	WP6	Washer , plain	6
	WL205	Washer , lock	6
	HN2005	Nut	6
		THROTTLE LINK DETAILS , from engine no. CP26805 up to CR1	
BV28	152889	Link , connecting, throttles	3
BV29	152724	Swivel Post , lower	3
BV30	149780	Trunnion , upper	3
		HARDWARE , securing swivel posts and trunnions to connecting links	
BV31	HN2005	Nut , one under each lower swivel and one under each upper trunnion	6
BV32	FX3203	Fix , round, upper side of each upper trunnion	3
		HARDWARE , securing trunnions and swivel posts to countershaft levers and to throttle levers	
BV33	WP6	Washer , plain	6
BV34	WL205	Washer , lock	6
BV35	HN2005	Nut	6
BV36	145197	Spring , countershaft return	1

(Continued on next page.)

PLATE BV

ACCELERATOR PEDAL AND
THROTTLE LINKAGE—P.I. MODELS,
1969 UP TO 1972

TRIUMPH TR6



ACCELERATOR PEDALS & THROTTLE LINKAGE—P.I. MODELS, 1969 UP TO 1972

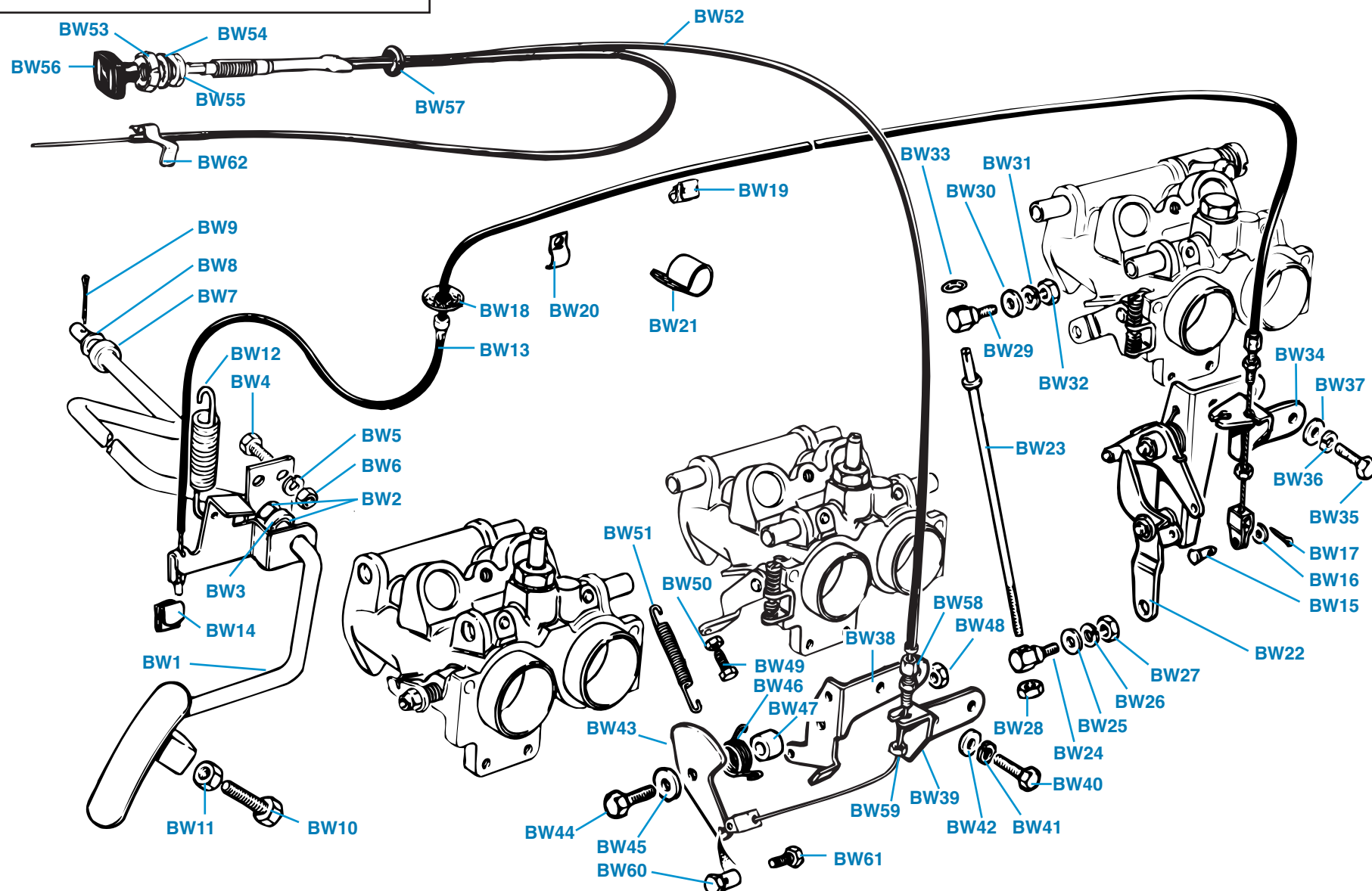
Plate No.	Part No.	Description	No. Off
		CHOKE CONTROL DETAILS	
BV37	149778	Cam Carrier and Choke Cable Attachment , fitted up to engine no. CP50000	1
	153559	Cam Carrier and Choke Cable Attachment , fitted after engine no. CP50000	1
BV38	149779	Cam , choke control	1
		HARDWARE , securing cam to cam carrier	
BV39	136482	Bolt , shouldered	1
	140313	Washer , waved	1
BV40	WP27	Washer , plain	1
BV41	WP129	Washer , plain	1
BV42	WL208	Washer , lock	1
BV43	HN2008	Nut	1
BV44	DS1607	Pin , dowel	1
		HARDWARE , securing outer choke cable to cam carrier	
BV45	147930	Adjuster	1
BV46	146984	Nut	2
		HARDWARE , securing inner choke cable to cam	
BV47	150342	Pin , trunnion	1
BV48	150343	Screw , clamping cable to pin	1
		CHOKE CONTROL ADJUSTING DETAILS	
BV49	517542	Screw , adjusting	1
BV50	517074	Nut , locking adjusting screw	1
		CHOKE RETURN DETAILS	
BV51	145197	Spring , return	1
BV52	149785	Link , return spring	1
		CHOKE CABLE DETAILS	
BV53	214888	Choke Cable Assembly	1
BV54	146987	Bezel , choke cable	1
	WN711	Washer , shakeproof	1
BV55	515789	Nut , lock	1
BV56	712907	Knob , choke cable	1
BV57	61917	Grommet , rubber, sealing bulkhead opening	1
BV58	149041	Clip , securing outer cable to fuel metering unit	1

Plate No.	Part No.	Description	No. Off
-----------	----------	-------------	---------

PLATE BW

ACCELERATOR PEDAL AND
THROTTLE LINKAGE—P.I. MODELS,
1973 UP TO 1976

TRIUMPH TR6



ACCELERATOR PEDAL & THROTTLE LINKAGE—P.I. MODELS, 1973 UP TO 1976

Plate No.	Part No.	Description	No. Off
ACCELERATOR PEDAL DETAILS			
BW1	214420	Accelerator Pedal Assembly , R.H.S.	1
	159877	Accelerator Pedal Assembly , L.H.S.	1
BW2	148526	BEARING PLATE ASSEMBLY , R.H.S.	1
	148954	BEARING PLATE ASSEMBLY , L.H.S.	1
BW3	138490	Bearing , nylon, pedal shaft, mounted in bearing plate	1
		HARDWARE , securing bearing plate assembly to pedal box	
BW4	HU705	Screw , set	2
BW5	WL207	Washer , lock	2
BW6	HN2007	Nut	2
BW7	138490	Bearing , nylon, pedal shaft, mounted in hole in bulkhead	1
		HARDWARE , retaining and locating pedal shaft	
BW8	WP9	Washer , plain	1
BW9	PC9	Pin , cotter	1
		PEDAL STOP DETAILS , R.H.S.	
BW10	HU816	Screw , set	1
BW11	HN2008	Nut , locking screw	1
BW12	149763	Spring	1
		PEDAL STOP DETAILS , L.H.S.	
	HU708	Screw , set	1
	JN2108	Nut , jam, locking screw	1
	27645	Spring , pedal return	1
THROTTLE CABLE DETAILS			
BW13	160308	Throttle Control Cable Assembly , R.H.S.	1
	160309	Throttle Control Cable Assembly , L.H.S.	1
BW14	606389	Clip , edge, retaining cable end to accelerator pedal, R.H.S.	1
	153041	Clip , push-on, retaining cable end to accelerator pedal, L.H.S.	1
		HARDWARE , securing cable end to throttle lever	
BW15	PJ8504	Pin , joint	1
BW16	WP5	Washer , plain	1
BW17	PC5	Pin , cotter	1
BW18	131492	Washer , sealing hole in dash shelf	1
BW19	610562	Clip , cable to R.H. valance, R.H.S. only	1
BW20	149725	Retainer , securing cable to dash shelf, attached by one of pedal box fixings, L.H.S. only	1
BW21	516510	P-Clip , securing cable to battery fixing rods, L.H.S. only	2

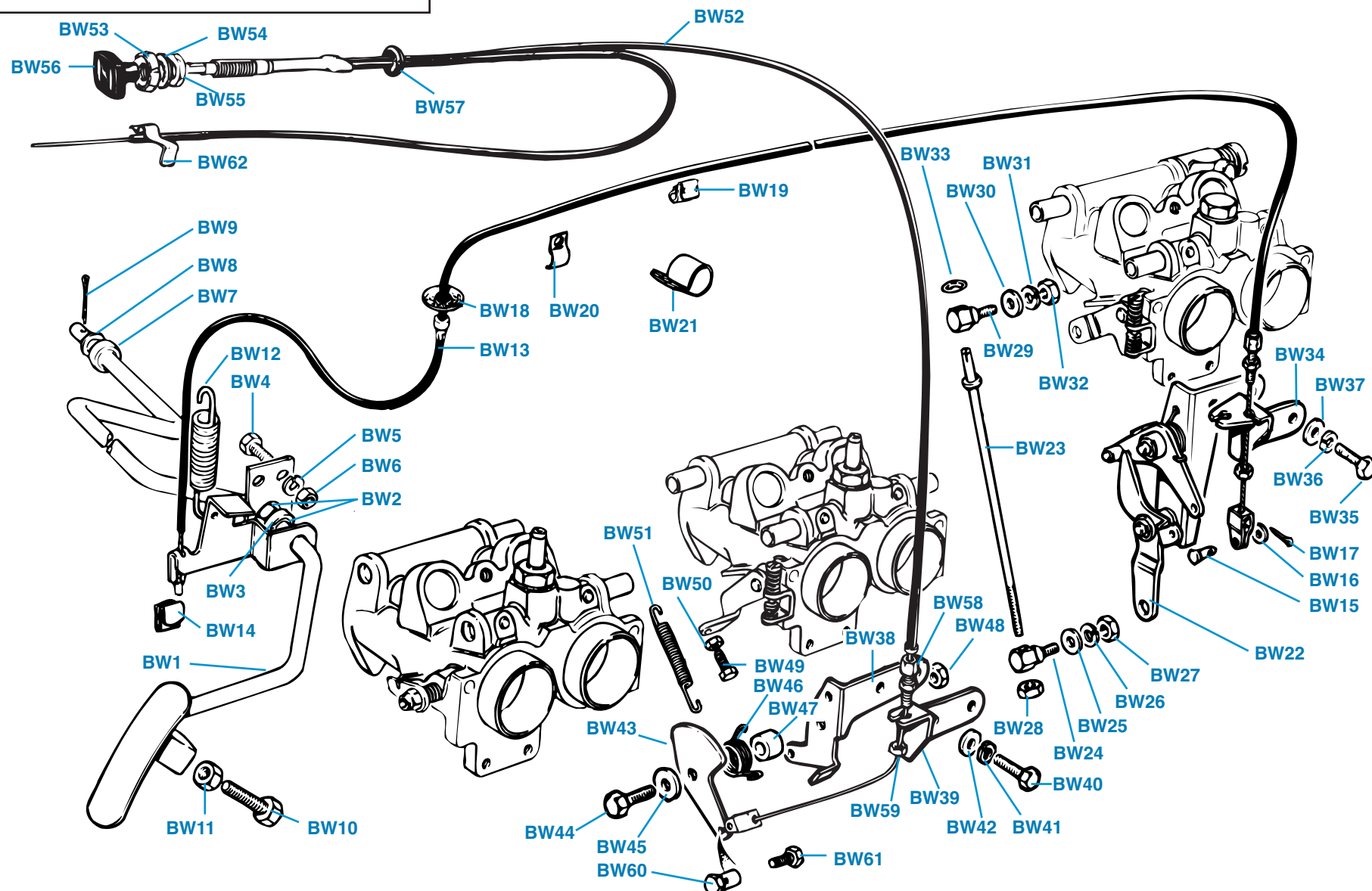
Plate No.	Part No.	Description	No. Off
THROTTLE LINKAGE			
BW22	160304	THROTTLE LINKAGE ASSEMBLY , up to engine number CR12500	1
	UKC1561	THROTTLE LINKAGE ASSEMBLY , after engine number CR12500	1
	155780	Bearing , cam and kickdown lever	1
	155780	Bearing , accelerator cable lever	1
BW23	160254	Link Rod Assembly , throttle linkage, fitted up to engine number CR12500	1
	UKC1588	Link Rod Assembly , throttle linkage, fitted after engine number CR12500	1
BW24	152724	Swivel Post , lower	1
		HARDWARE , securing lower swivel post to lever	
BW25	WP6	Washer , plain	1
BW26	WL205	Washer , lock	1
BW27	HN2005	Nut	1
BW28	HN2005	Nut , securing link rod to lower swivel post	1
BW29	149780	Swivel Post , upper	1
		HARDWARE , securing upper swivel post to throttle spindle lever	
BW30	WP6	Washer , plain	1
BW31	WL205	Washer , lock	1
BW32	HN2005	Nut	1
BW33	FX3203	Nut , spire, securing link rod assembly to upper swivel post	1
BW34	160257	Bracket , throttle cable abutment	1
		HARDWARE , securing abutment bracket and throttle linkage assembly to front intake manifold	
BW35	HU706	Screw	2
BW36	WL207	Washer , lock	2
BW37	WP7	Washer , plain	2
CHOKE LINKAGE			
BW38	160255	Bracket , mounting, fast idle cam	1
BW39	160258	Bracket , abutment, choke cable	1
		HARDWARE , securing brackets to center intake manifold	
BW40	HU706	Screw , set	2
BW41	WL207	Washer , lock	2
BW42	WP7	Washer , plain	2
BW43	160256	Cam , fast idle, fitted up to engine no. CR12500	1
	UKC1158	Cam , fast idle, fitted after engine no. CR12500	1

(Continued on next page.)

PLATE BW

ACCELERATOR PEDAL AND
THROTTLE LINKAGE—P.I. MODELS,
1973 UP TO 1976

TRIUMPH TR6



ACCELERATOR PEDAL & THROTTLE LINKAGE—P.I. MODELS, 1973 UP TO 1976

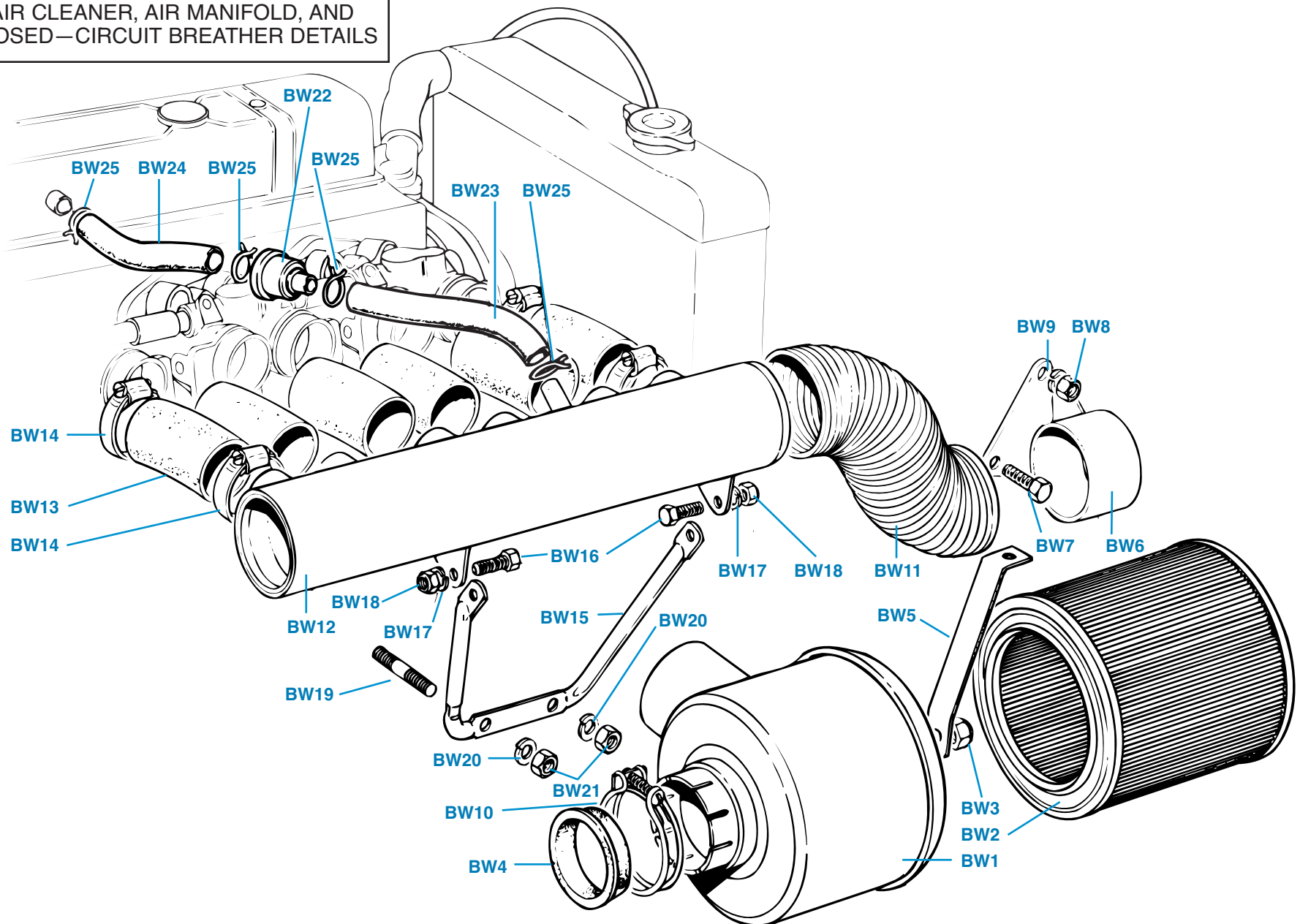
Plate No.	Part No.	Description	No. Off
		CHOKE LINKAGE-Continued	
		HARDWARE AND FITTINGS , securing fast idle cam to mounting bracket	
BW44	HU808	Screw , set	1
BW45	WP8	Washer , plain	1
BW46	160228	Spring , return	1
BW47	160281	Spacer	1
BW48	JN2108	Nut , jam	1
		FAST IDLE ADJUSTING DETAILS	
BW49	512288	Screw , adjusting, threaded into hole in lever on center throttle spindle	1
BW50	517074	Nut , locking screw	1
BW51	UKC665	Spring , choke return	1
		CHOKE CABLE DETAILS	
BW52	219258	Choke Cable Assembly	1
BW53	146987	Bezel , choke cable	1
BW54	WN711	Washer , shakeproof	1
BW55	515789	Nut , lock	1
BW56	712907	Knob , choke cable, symbol identification	1
	725373	Knob , choke cable, marked with word "CHOKE"	1
BW57	61917	Grommet , rubber, sealing bulkhead opening	1
		HARDWARE , securing outer choke cable to abutment bracket	
BW58	147930	Adjuster	1
BW59	146984	Nut , locking	2
		HARDWARE , securing inner choke cable to fast idle cam	
BW60	150342	Pin , trunnion	1
BW61	150343	Screw , clamping cable to pin	1
BW62	149041	Clip , securing outer choke cable to fuel metering unit	1

Plate No.	Part No.	Description	No. Off
-----------	----------	-------------	---------

PLATE BX

AIR CLEANER, AIR MANIFOLD, AND
CLOSED—CIRCUIT BREATHER DETAILS

TRIUMPH TR6



AIR CLEANER, AIR MANIFOLD, AND CLOSED-CIRCUIT BREATHER DETAILS

Plate No.	Part No.	Description	No. Off	Plate No.	Part No.	Description	No. Off
AIR CLEANER DETAILS				CLOSED-CIRCUIT BREATHER DETAILS			
AIR CLEANER ASSEMBLY				Breather Assembly			
BX1	308444	Element , air cleaner	1	BX22	149996		1
BX2	GFE1048	Nut , nyloc, securing cover	1	BX23	149994	Hose , from breather to air manifold	1
BX3	517410	Insulator , rubber	1	BX24	149995	Hose , from breather to rocker cover	1
BX4	517411			BX25	CC5012	Clip , hose attachment	4
AIR FEED HOSE DETAILS , fitted after comm. no.							
		CP52894					
	627527	Hose , air cleaner feed	2				
	156401	Clip Assembly , feed hose	2				
	HB506	Bolt , clip assembly	2				
	WP5	Washer , clip assembly	2				
AIR CLEANER SUPPORT DETAILS							
BX5	153282	Strap Assembly , air cleaner support, front	1				
BX6	149306	Bracket Assembly , air cleaner support	1				
HARDWARE , securing bracket to radiator stay							
BX7	HU805	Screw , set	1				
BX8	HN2008	Nut	1				
BX9	WL208	Washer , lock	1				
BX10	CS4052	Clip , hose, securing air cleaner to mounting bracket	1				
BX11	149693	Hose , from air cleaner to air manifold	1				
AIR MANIFOLD DETAILS							
BX12	216062	Air Manifold Assembly , fitted up to engine no., CP50000	1				
	216374	Air Manifold Assembly , fitted after engine no. CP50000	1				
BX13	149373	Hose , from air manifold to intake manifold, fitted up to engine no. CP50000	6				
	152601	Hose , from air manifold to intake manifold, fitted after engine no. CP50000	6				
BX14	CJ3038	Clip , securing hoses, fitted to front and rear hoses only	4				
AIR MANIFOLD SUPPORT DETAILS							
BX15	214840	Stay , supporting air manifold	1				
HARDWARE , securing stay to air manifold							
BX16	HU706	Screw , set	2				
BX17	WL207	Washer , lock	2				
BX18	HN2007	Nut	2				
HARDWARE , securing stay to engine block							
BX19	128773	Stud , securing engine mounting bracket and air manifold stay	2				
BX20	WL209	Washer , lock	2				
BX21	HN2009	Nut	2				