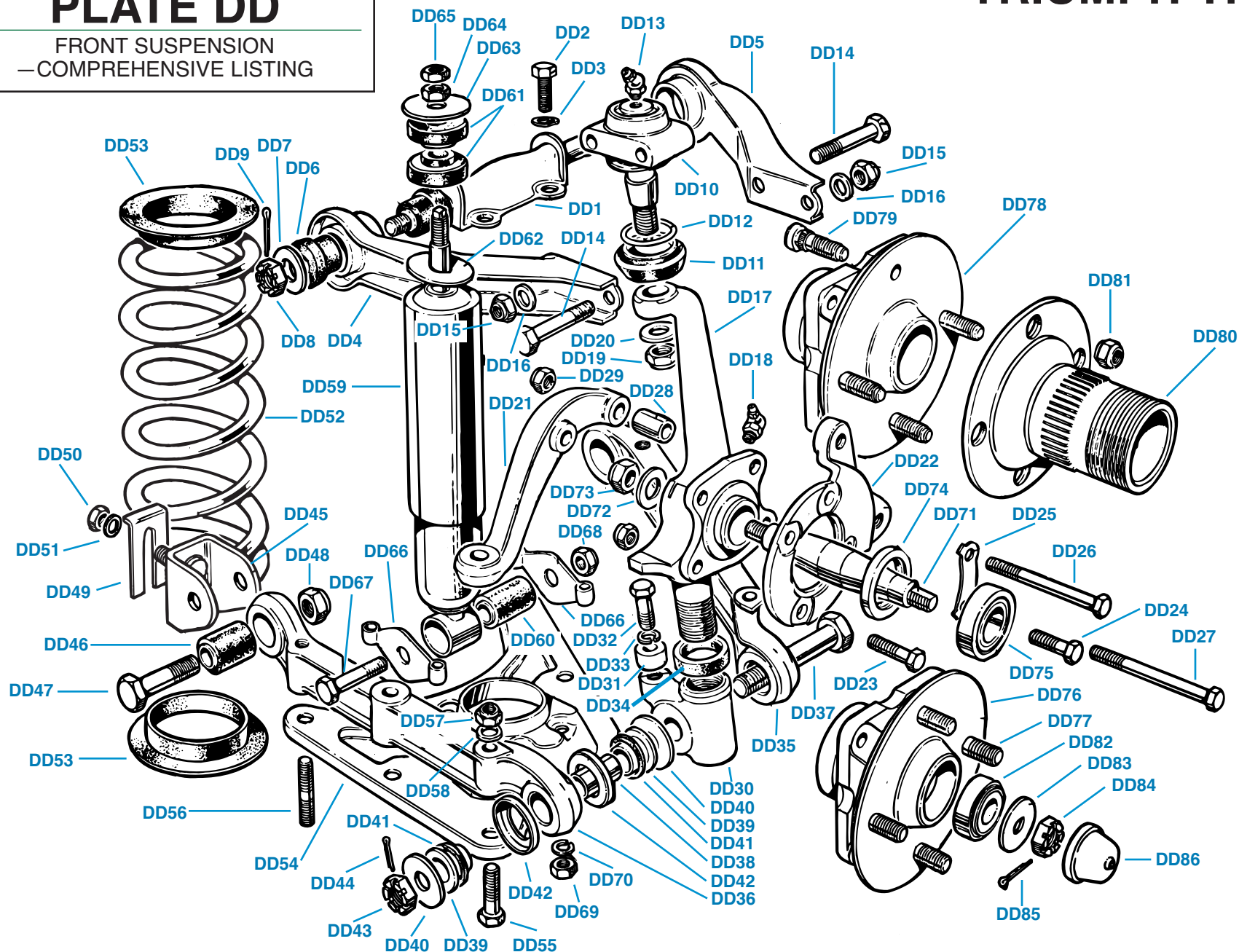


PLATE DD

FRONT SUSPENSION
—COMPREHENSIVE LISTING

TRIUMPH TR6



FRONT SUSPENSION—COMPREHENSIVE LISTING

Plate No.	Part No.	Description	No. Off
		FRONT SUSPENSION ASSEMBLIES	
	308448	Front Suspension Unit , L.H., for cars with bolt-on disc wheels	1
	308447	Front Suspension Unit , R.H., for cars with bolt-on disc wheels	1
	517093	Front Suspension Unit , L.H., for cars with center-lock wire wheels	1
	517092	Front Suspension Unit , R.H., for cars with center-lock wire wheels	1
		Please Note: The above units comprise upper wishbones, top inner fulcrum, vertical link, stub axle, hub, brake unit, tie-rod lever, bottom trunnion, lower wishbone arms, and lower inner fulcrum brackets	
		INDIVIDUAL COMPONENTS	
		UPPER WISHBONE DETAILS	
DD1	200659	Fulcrum Pin , upper inner	2
		HARDWARE , securing fulcrum pin to chassis frame	
DD2	HU908	Screw , set	8
DD3	WL209	Washer , lock	8
DD4	133504	Wishbone Arm Assembly , upper, front	2
DD5	133507	Wishbone Arm Assembly , upper, rear	2
		HARDWARE AND FITTINGS , securing wishbone arms to fulcrum pins	
DD6	102228	Bush , rubber, wishbone pivot	8
DD7	WM69	Washer , plain	4
DD8	LN2210	Nut , slotted	4
DD9	PC10	Pin , cotter	4
DD10	142394	BALL JOINT ASSEMBLY , original-equipment	2
DD11	138509	Gaiter , for original-equipment ball joint	2
DD12	138869	Clip , gaiter, for original-equipment ball joint	2
DD13	501024	Nipple , grease, for original-equipment ball joint	2
		Please Note: See ball joint kits listed at end of this section.	
		HARDWARE , securing ball joints to upper wishbones	
DD14	112347	Bolt	4
DD15	YN2909	Nut , nyloc	4
DD16	WP45	Washer , plain	4
		VERTICAL LINK DETAILS	
DD17	307216	Vertical Link , L.H.	1
	307215	Vertical Link , R.H.	1
DD18	125362	Nipple , grease, vertical link	2
		HARDWARE , securing vertical links to top ball joints	
DD19	YN2911	Nut , nyloc	2
DD20	WP11	Washer , plain	2
DD21	307212	Tie-Rod Lever , L.H.	1
	307211	Tie-Rod Lever , R.H.	1
DD22	133500	Plate , brake caliper mounting, L.H.	1
	133499	Plate , brake caliper mounting, R.H.	1

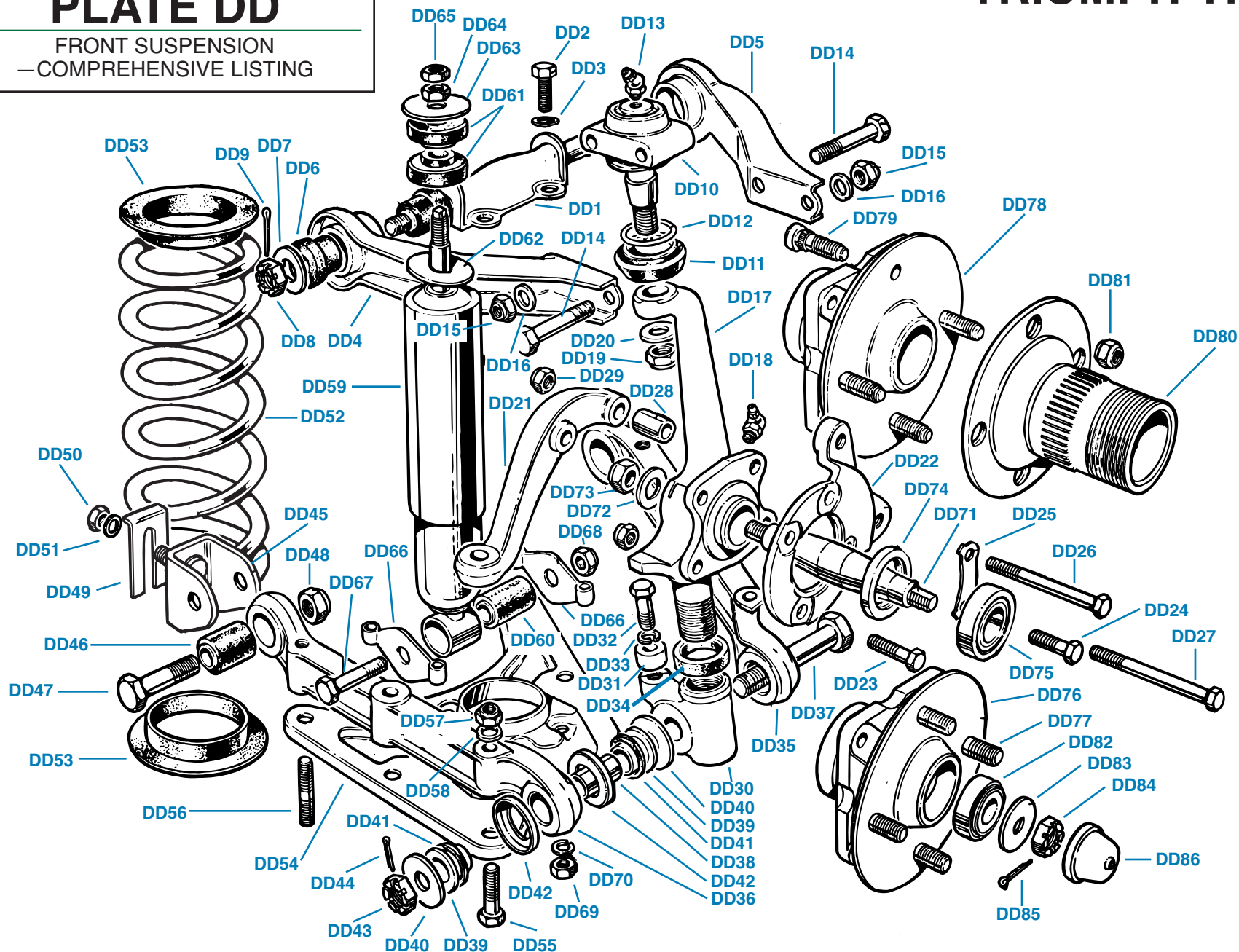
Plate No.	Part No.	Description	No. Off
		INDIVIDUAL COMPONENTS-Continued	
		VERTICAL LINK DETAILS-Continued	
		HARDWARE , securing tie-rod levers and mounting plates to vertical links	
DD23	118324	Bolt	2
DD24	113144	Bolt , fitted up to 1973	2
	SH606065	Bolt , fitted after 1973	2
DD25	106641	Plate , locking	4
DD26	113143	Bolt	2
DD27	112032	Bolt	2
DD28	107106	Distance Piece	4
DD29	YN2909	Nut , nyloc	4
		HARDWARE , securing disc brake dust cover to vertical link	
		Nut , nyloc	2
		Washer , plain	2
		LOWER WISHBONE AND TRUNNION DETAILS	
DD30	142378	Bottom Trunnion Assembly , L.H.	1
	142377	Bottom Trunnion Assembly , R.H.	1
DD31	156111	Stop , steering lock	2
		HARDWARE , securing steering lock stops to trunnions	
DD32	HU811	Screw , set	2
DD33	WL222	Washer , lock	2
DD34	142402	Seal , grease, between lower trunnion and vertical link	2
DD35	307210	Lower Wishbone Arm , R.H. front or L.H. rear	2
DD36	307209	Lower Wishbone Arm , L.H. front or R.H. rear	2
		HARDWARE AND FITTINGS , securing lower wishbones to lower trunnions	
DD37	139835	Bolt , pivot	2
DD38	139832	Bearing , steel	4
DD39	139833	Bearing , nylon	8
DD40	142388	Washer , thrust	8
DD41	142387	Ring , rubber, sealing	8
DD42	139834	Water Shield	8
DD43	LN2212	Nut , slotted	2
DD44	PC12	Pin , cotter	2
DD45	148691	Fulcrum Bracket Assembly , lower, inner	4
		HARDWARE AND FITTINGS , securing lower wishbones to fulcrum brackets	
DD46	141481	Bush , rubber and steel	4
DD47	HB1122	Bolt , pivot	4
DD48	YN2911	Nut , nyloc	4

(Continued on next page.)

PLATE DD

FRONT SUSPENSION
—COMPREHENSIVE LISTING

TRIUMPH TR6



FRONT SUSPENSION—COMPREHENSIVE LISTINGS

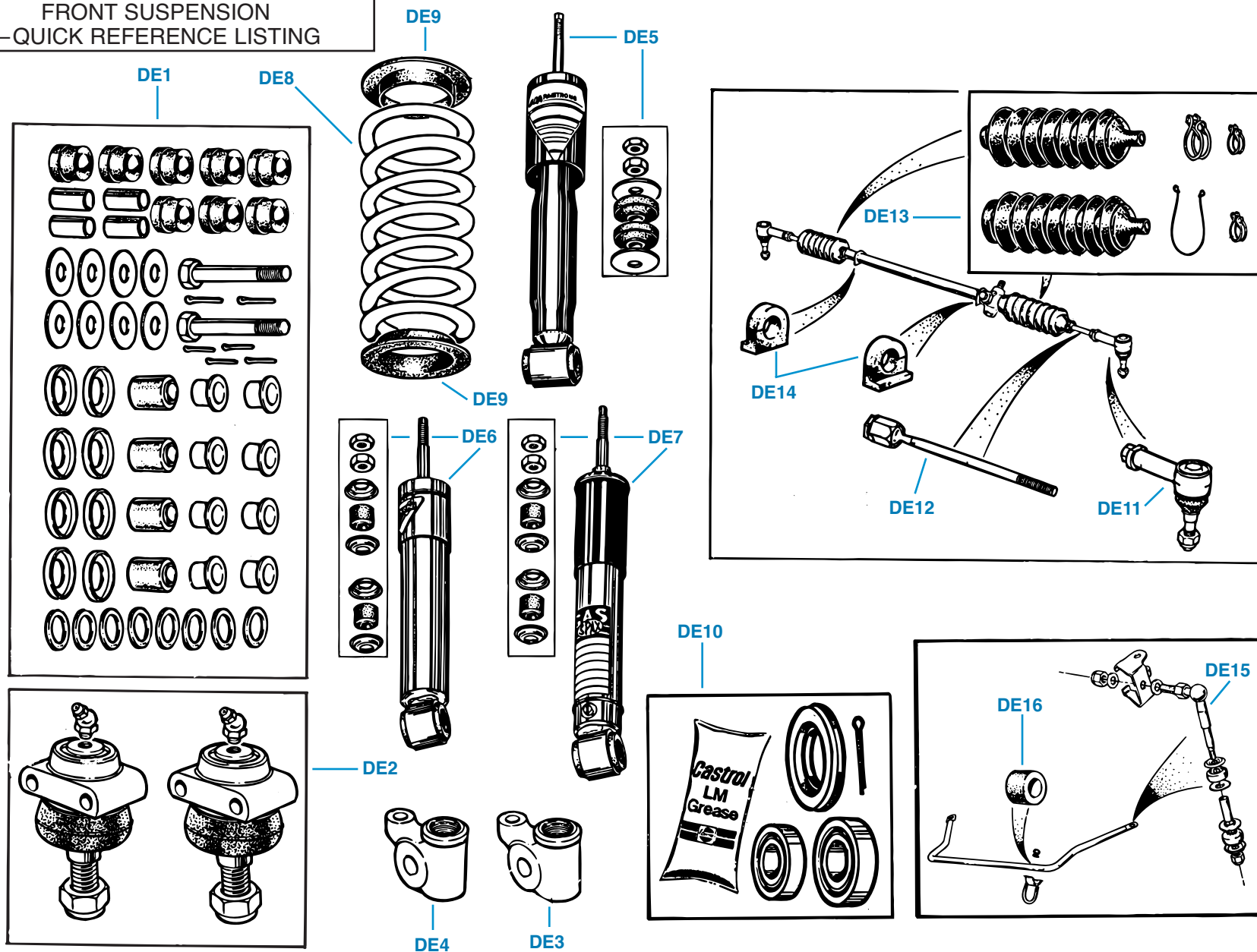
Plate No.	Part No.	Description	No. Off
INDIVIDUAL COMPONENTS—Continued			
LOWER WISHBONE AND TRUNNION DETAILS—			
Continued			
HARDWARE AND FITTINGS , securing fulcrum			
brackets to chassis frame			
DD49	139727	Shim , wheel alignment	A/R
DD50	YN2909	Nut , nyloc	8
DD51	WM59	Washer , plain	8
ROAD SPRINGS AND SPRING PAN DETAILS			
DD52	213165	Front Road Spring , stock grade	2
	SAH606	Front Road Spring , mild competition grade	2
DD53	100751	Washer , rubber, spring packing	4
DD54	140951	LOWER SPRINGPAN ASSEMBLY	2
	101961	Stud , welded to spring pans	8
HARDWARE , securing spring pans to lower			
wishbones			
DD55	HB916	Bolt	6
	HB921	Bolt , securing anti-roll bar bracket to lower	2
wishbones when anti-roll bar is fitted			
DD56	143712	Stud	4
DD57	YN2909	Nut , nyloc	12
DD58	WP20	Washer , plain	12
SHOCK ABSORBERS			
DD59	AR62-1395	Front Shock Absorber , original type (Armstrong brand)	2
	KONI80A-1784	Front Shock Absorber , adjustable type (Koni brand)	2
	SPAX102	Front Shock Absorber , adjustable type (Spax brand)	2
HARDWARE AND MOUNTINGS INCLUDED WITH			
SHOCK ABSORBERS			
DD60	119450	Rubber Mounting , lower	2
DD61	142444	Rubber Mounting , upper	4
DD62	140416	Washer , upper mounting, lower	2
DD63	140479	Washer , upper mounting, upper	2
DD64	HN2009	Nut	2
DD65	JN2109	Nut , jam	2
HARDWARE AND MOUNTINGS NOT INCLUDED			
WITH SHOCK ABSORBERS			
DD66	106843	Bracket , fulcrum, shock absorber mounting,	4
lower			
DD67	HB1020	Bolt , pivot, securing fulcrum brackets to shock	2
absorbers			
DD68	TN3210	Nut , nyloc, securing bolts	2
DD69	HN2009	Nut , securing fulcrum brackets to spring pans	8
DD70	WL209	Washer , lock, securing nuts	8

Plate No.	Part No.	Description	No. Off
INDIVIDUAL COMPONENTS—Continued			
STUB AXLES, HUBS, AND BEARINGS			
DD71	115763	Stub Axle	2
HARDWARE , securing stub axles to vertical links			
DD72	WP11	Washer , plain	2
DD73	TN3211	Nut , nyloc	2
DD74	107194	Seal , grease, front hub	2
DD75	100573	Bearing Assembly , front hub, inner	2
DD76	114284	FRONT HUB ASSEMBLY , disc wheels only	2
DD77	114282	Wheel Stud , disc wheels	8
DD78	114283	FRONT HUB ASSEMBLY , wire wheels only	2
DD79	114281	Wheel Stud , wire wheels	8
DD80	217603	Hub Extension , L.H., wire wheels only	2
	217602	Hub Extension , R.H., wire wheels only	2
DD81	110366	Nut , double-bevel, securing hub extensions to hubs,	16
wire wheels only			
DD82	100536	Bearing Assembly , front hub, outer	2
HARDWARE , securing front hubs to stub axles			
DD83	102690	Washer , "D"	2
DD84	LN2211	Nut , slotted	2
DD85	PC20	Pin , cotter	2
DD86	102689	Cap , grease (dust cap)	2
FRONT SUSPENSION SERVICE KITS			
BK2		Front Suspension Rebushing Kit , including all upper	1
and lower fulcrum bushes, bearings, and thrust			
washers, along with a pair of trunnion pivot bolts			
(One kit does both sides.); see Section DE for			
illustration.			
QJSJ100		Ball Joint Kit , including two ball joints with rubber	1
gaiters and grease fittings (One kit does both			
sides.); see Section DE for illustration.			
QWB107		Front Hub Bearing Kit , including inner bearing, outer	1
bearing, grease seal, and wheel bearing grease			
(One kit does one front hub.); see Section DE for			
illustration			

PLATE DE

FRONT SUSPENSION
—QUICK REFERENCE LISTING

TRIUMPH TR6



FRONT SUSPENSION—QUICK REFERENCE LISTING

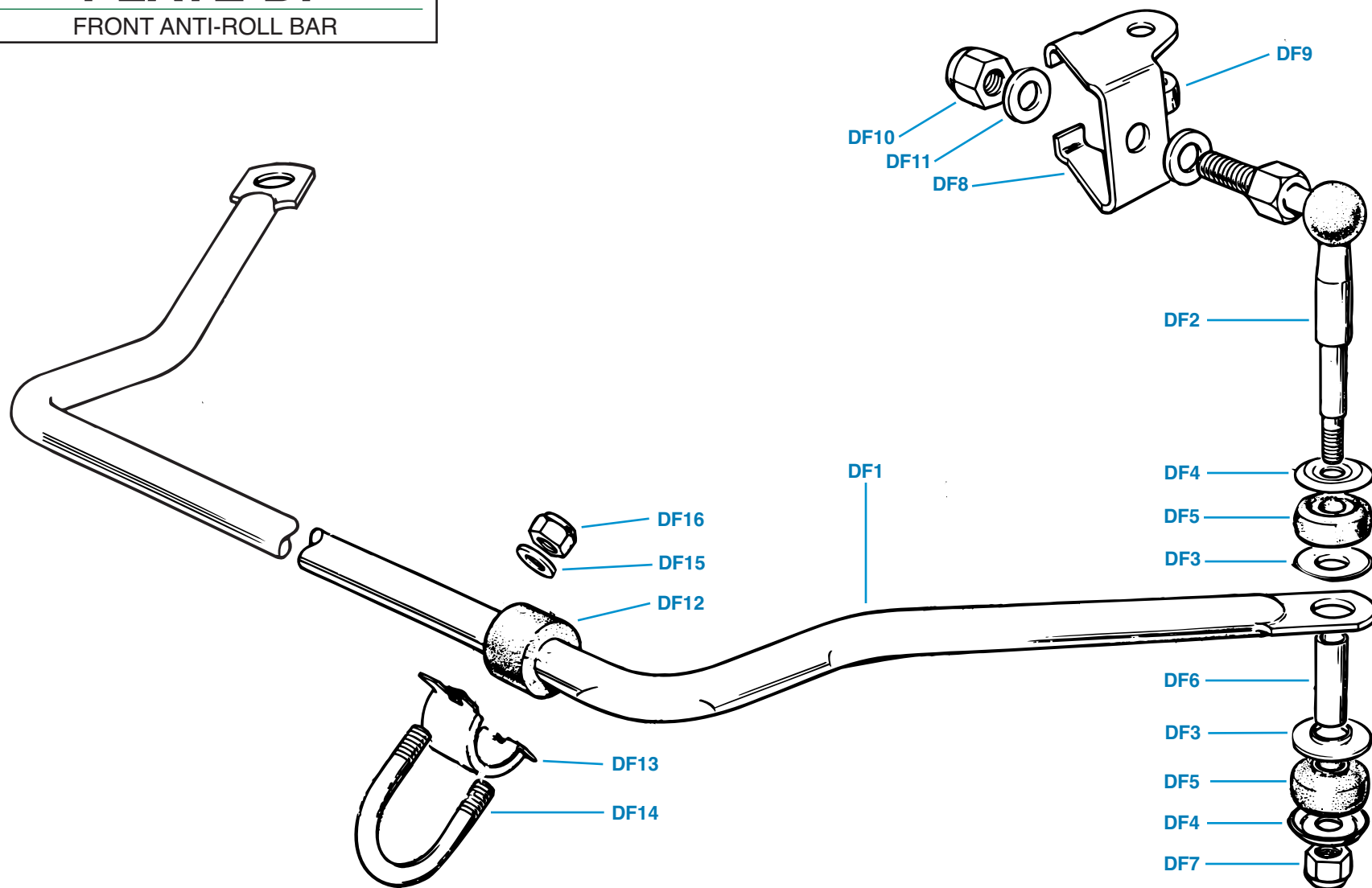
Plate No.	Part No.	Description	No. Off
DE1	BK2	FRONT SUSPENSION REBUSHING KIT	1
	102228	Bush , rubber, upper wishbone inner pivots	8
	PC10	Pin , cotter, securing upper fulcrum slotted nuts	4
	141481	Bush , rubber and steel, lower wishbone inner pivots	4
	139832	Bearing , steel, lower wishbone outer pivots	4
	139833	Bearing , nylon, lower wishbone outer pivots	8
	139834	Water Shield , lower wishbone outer pivots	8
	142387	Ring , sealing, lower wishbone outer pivots	8
	142388	Washer , thrust, lower wishbone outer pivots	8
	139835	Bolt , through trunnions	2
	PC12	Pin , cotter, securing trunnion bolt slotted nuts	2
DE2	QSJ100	Upper Ball Joint Kit (Includes two ball joints.)	1
DE3	142378	Lower Trunnion Assembly , L.H.	1
DE4	142377	Lower Trunnion Assembly , R.H.	1
DE5	AR62-1395	Front Shock Absorber , Armstrong brand, with mounting bushes	2
DE6	KONI80A-1784	Front Shock Absorber , adjustable, Koni brand, with mounting bushes	2
DE7	SPAX102	Front Shock Absorber , adjustable, Spax brand, with mounting bushes	2
DE8	213165	Front Road Spring , stock grade	2
	SAH606	Front Road Spring , mild competition grade	2
DE9	100751	Packing , rubber, front springs	4
DE10	QWB107	Front Wheel Bearing Kit	2
DE11	GSJ156	Outer Tie-Rod End Assembly	2
DE12	142687	Inner Tie-Rod End Assembly	2
DE13	RFK135	Steering Rack Bellows Kit	1
DE14	139386	Rubber Mounting , steering rack	2
DE15	152143	Anti-Roll Bar Link Assembly	2
DE16	123998	Mounting Bush , rubber, anti-roll bar	2

Plate No.	Part No.	Description	No. Off
-----------	----------	-------------	---------

PLATE DF

FRONT ANTI-ROLL BAR

TRIUMPH TR6



FRONT ANTI-ROLL BAR

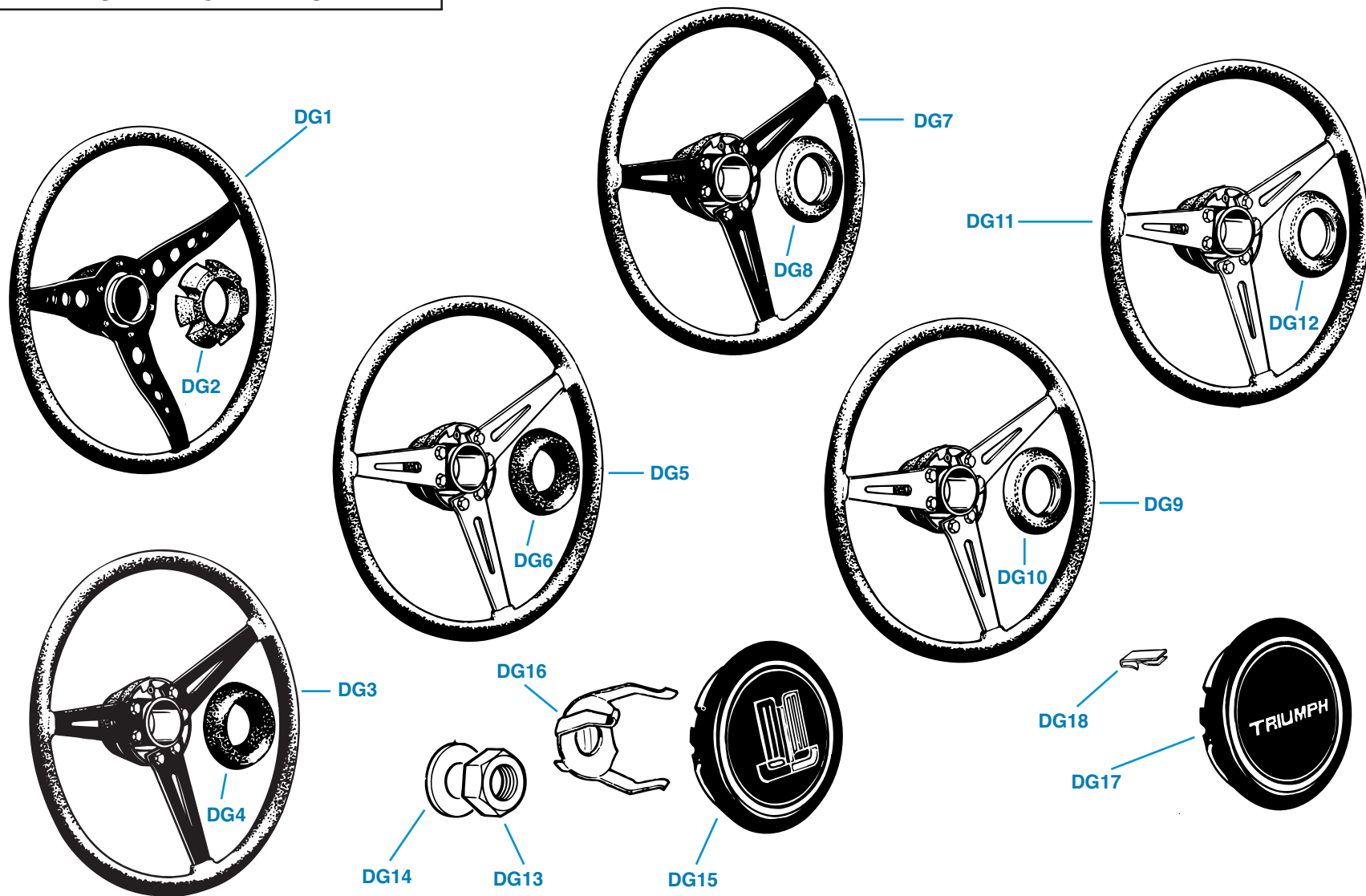
Plate No.	Part No.	Description	No. Off
		Note: The anti-roll bar details listed in this section are the ones fitted to the TR6 at the factory. Aftermarket anti-roll bar kits for both the front and rear of the car are listed in Section GS.	
	RFK130	FRONT ANTI-ROLL BAR KIT (COMPLETE)	1
DF1	215647	Anti-Roll Bar	1
DF2	152143	LINK ASSEMBLY , anti-roll bar	2
DF3	517983	Washer , mounting	4
DF4	517984	Washer , mounting	4
DF5	517985	Rubber , mounting	4
DF6	517986	Tube , distance	2
DF7	YN2909	Nut , nyloc	2
DF8	152144	Bracket , mounting links to lower front wishbones	2
DF9	152145	Piece , packing, between lower sides of wishbones and link mounting brackets	2
DF10	YN2910	Nut , nyloc, securing link assemblies to mounting brackets	2
DF11	WP46	Washer , plain, securing link assemblies to mounting brackets 2	2
DF12	123998	Bush , rubber, locating anti-roll bar	2
DF13	123502	Bracket , clamp, securing anti-roll bar to radiator protection shield	2
DF14	123694	U-Bolt , securing clamp brackets to radiator protection shield	2
DF15	WP17	Washer , plain, on U-bolts	4
DF16	YN2908	Nut , nyloc, securing U-bolts	4

Plate No.	Part No.	Description	No. Off
-----------	----------	-------------	---------

PLATE DG

STEERING WHEELS

TRIUMPH TR6



STEERING WHEELS

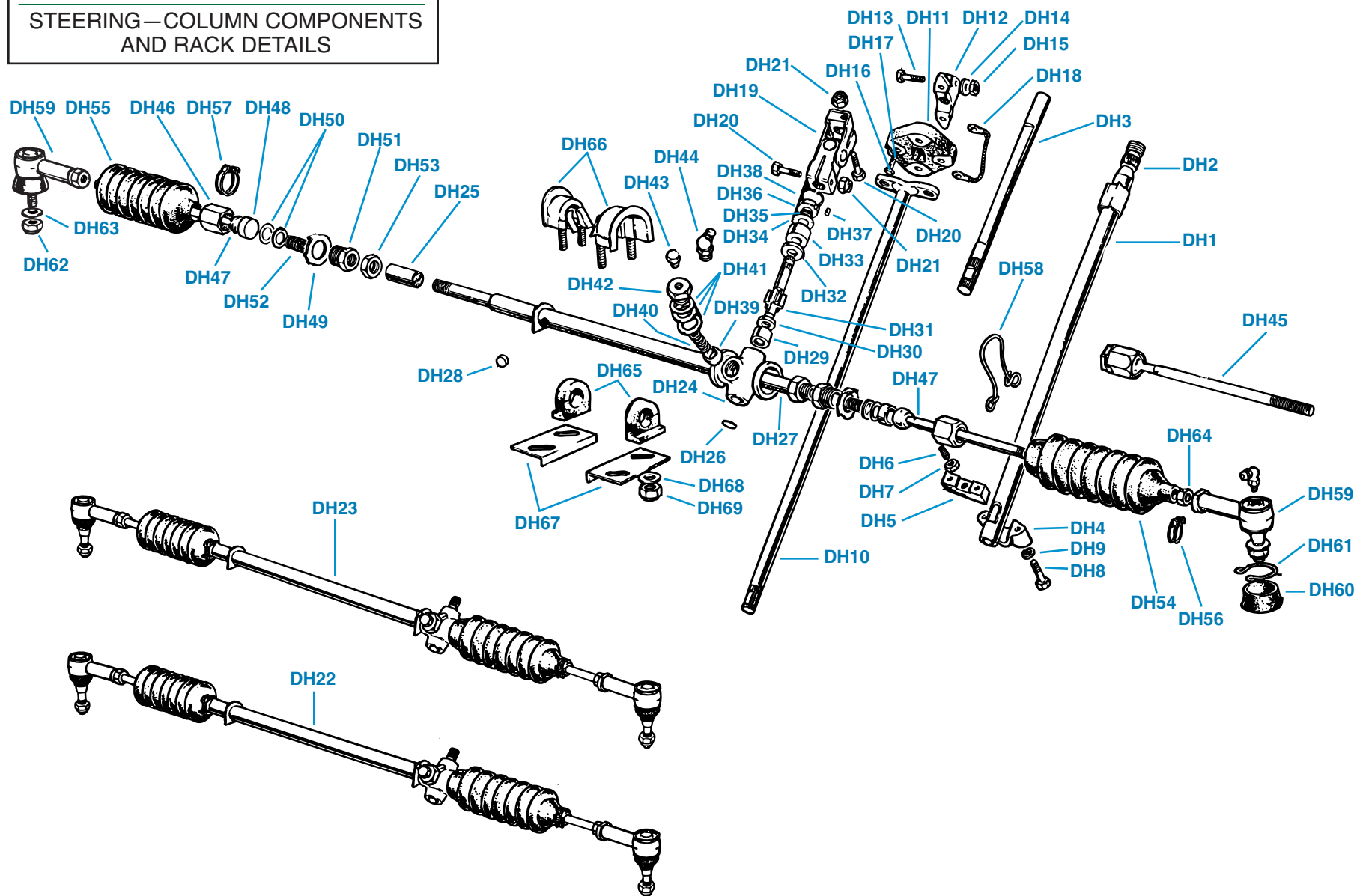
Plate No.	Part No.	Description	No. Off
		STEERING WHEEL AND CENTER PAD , fitted to all models up to comm. no. CC/CP50000	
DG1	308907	Steering Wheel Assembly	1
DG2	518121	Center Pad	1
	518533	STEERING WHEEL AND CENTER PAD ASSEMBLY , fitted to U.S.A. models from comm. no.CC50000 up to ?	1
DG3	311249	Steering Wheel Assembly	1
DG4	216508	Center Pad	1
	518535	STEERING WHEEL AND CENTER PAD ASSEMBLY , fitted to all models other than U.S.A., from CP50000 up to ?	1
DG5	153937	Steering Wheel Assembly	1
DG6	216508	Center Pad	1
	519445	STEERING WHEEL AND CENTER PAD ASSEMBLY , fitted to U.S.A. models from comm. no. ? up to CF1	1
DG7	311249	Steering Wheel Assembly	1
DG8	156170	Center Pad	1
	519444	STEERING WHEEL AND CENTER PAD ASSEMBLY , fitted to all models except U.S.A. from comm. no. ? up to CF1	1
DG9	153937	Steering Wheel Assembly	1
DG10	156170	Center Pad	1
	160038	STEERING WHEEL AND CENTER PAD ASSEMBLY , fitted to all models after comm. no. CF/CR1	1
DG11	313150	Steering Wheel Assembly	1
DG12	156170	Center Pad	1
		HARDWARE , securing steering wheel to steering column	
DG13	105438	Nut	1
DG14	WP25	Washer, plain, under nut, used on some models (9/16 inch I.D., 1-1/8 inch O.D.)	1
	WP8027	Washer, plain, under nut, used on some models (Dimensions are not available.)	1
		HORN PUSH DETAILS , fitted up to comm. no.CF/CR1	
DG15	150277	Horn Push Assembly, Triumph medallion	1
DG16	204741	Clip, retaining horn push	1
		HORN PUSH DETAILS , fitted after comm. no. CF/CR1	
DG17	159761	Horn Push Assembly, word "TRIUMPH"	1
DG18	613766	Clip, retaining horn push	2

Plate No.	Part No.	Description	No. Off
-----------	----------	-------------	---------

PLATE DH

STEERING—COLUMN COMPONENTS
AND RACK DETAILS

TRIUMPH TR6



STEERING-COLUMN COMPONENTS AND RACK DETAILS

Plate No.	Part No.	Description	No. Off
STEERING COLUMN COMPONENTS			
DH1	149864	STEERING COLUMN ASSEMBLY , upper, outer, early non-locking type	1
	149869	STEERING COLUMN ASSEMBLY , upper, outer, locking type, fitted up to comm. no. CC/CP5000	1
	154640	STEERING COLUMN ASSEMBLY , L.H.S., upper, outer, locking type, fitted after comm. no. CC/CP50000	1
	156060	STEERING COLUMN ASSEMBLY , R.H.S., upper, outer, locking type, fitted after comm. no. CC/CP52786	1
DH2	140549	Clip , turn signal cancelling	1
DH3	149862	Steering Column , upper, inner	1
DH4	122669	Clamp , steering column	1
		HARDWARE AND FITTINGS , securing steering column clamp to steering columns	
DH5	125782	Plate , locating clamp	1
DH6	125781	Screw , locking	1
DH7	JN2110	Nut , jam	1
DH8	HB710	Bolt	2
DH9	WL207	Washer , lock	2
DH10	213308	Steering Column , lower	1
DH11	150696	Coupling , flexible	1
		ADAPTOR DETAILS , coupling to upper inner column, fitted up to comm. no. CC77477 and CP75371	
DH12	150699	Adaptor	1
		HARDWARE , securing adaptor to upper inner column	
DH13	140349	Bolt	1
DH14	WP21	Washer , plain	1
DH15	TN3208	Nut , nyloc	1
		ADAPTOR DETAILS , coupling to upper inner column, fitted after comm. no. CC77477 and CP75371	
	156270	Adaptor	1
		HARDWARE , securing adaptor to upper inner column	
	HB813	Bolt	1
	WP21	Washer , plain	1
	TN3208	Nut , nyloc	1
		HARDWARE , securing flexible coupling to upper and lower column adaptors	
DH16	128323	Bolt , drilled	4
DH17	158701	Wire , locking	2
STEERING COLUMN COMPONENTS-Continued			

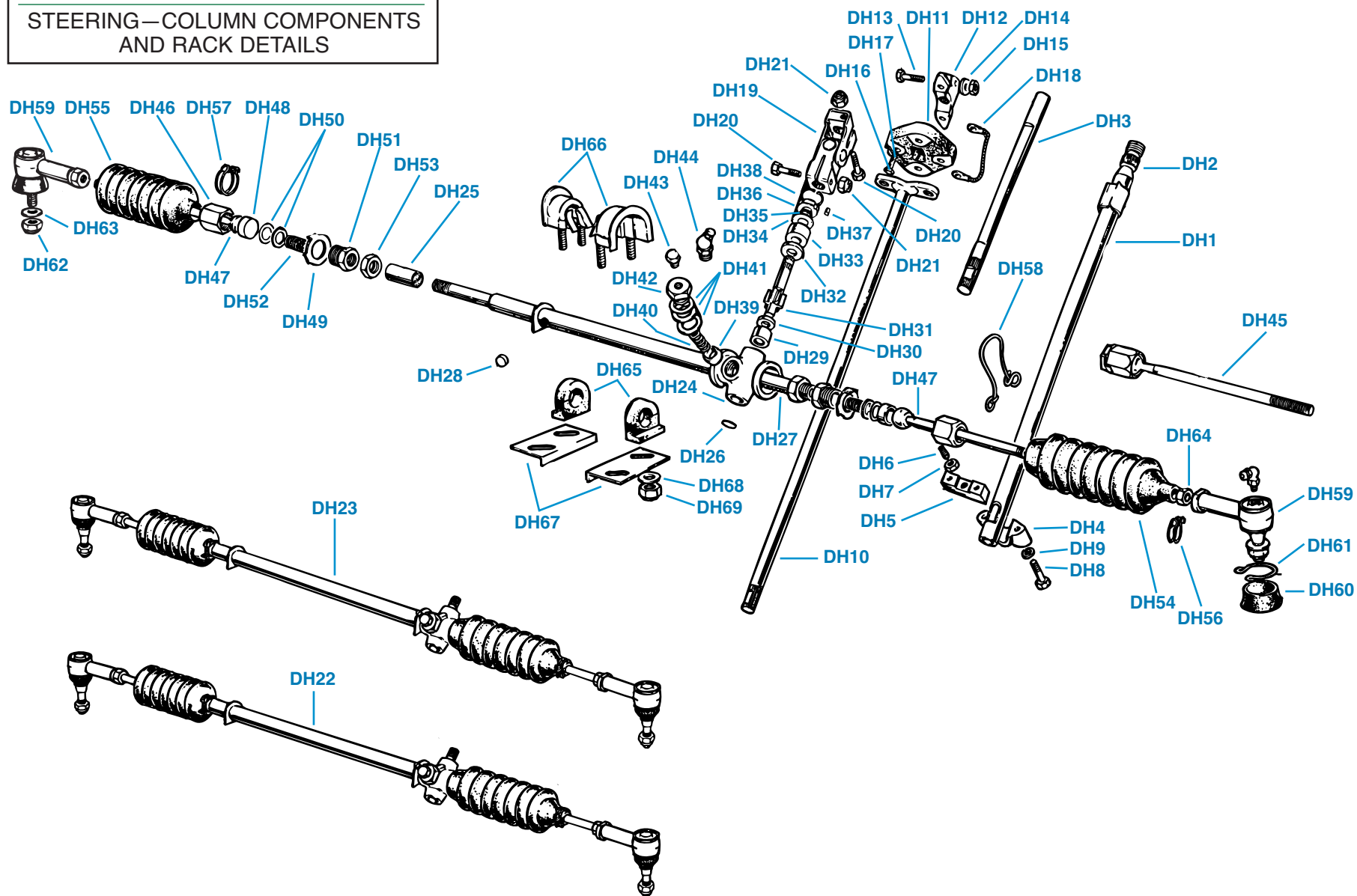
Plate No.	Part No.	Description	No. Off
		ALTERNATIVE HARDWARE , securing flexible coupling to upper and lower column adaptors	
	128323	Bolt , drilled	2
	150697	Screw , drilled	2
	158701	Wire , locking	2
DH18	130581	Strip , conductor, carrying electric current past flexible coupling	1
DH19	145377	Universal Joint Assembly	1
		HARDWARE , securing universal joint to lower column and to steering unit	
DH20	HB812	Bolt	2
DH21	YN2908	Nut , nyloc	2
		RACK AND PINION ASSEMBLIES	
DH22	306830	Rack and Pinion Assembly , L.H.S.	1
	306830R	Rack and Pinion Assembly , L.H.S., factory rebuilt unit	1
DH23	306830A	Rack and Pinion Assembly , L.H.S., new replacement unit (Different appearance from original.)	1
	306829	Rack and Pinion Assembly , R.H.S.	1
	306829R	Rack and Pinion Assembly , R.H.S., factory rebuilt unit	1
	306829A	Rack and Pinion Assembly , R.H.S., new replacement unit (Different appearance from original.)	1
		INDIVIDUAL COMPONENTS	
DH24	305773	Body , rack and pinion, L.H.S.	1
	305774	Body , rack and pinion, R.H.S.	1
		RACK AND FITTINGS	
DH25	128002	Bush , rack tube	1
DH26	128020	Cover , end	1
DH27	208375	Rack	1
DH28	145108	Plug , nylon, rack damping (Held in place by rubber rack mounting.)	1
		PINION AND FITTINGS	
DH29	127997	Bush , pinion, lower	1
DH30	128000	Washer , thrust, lower	1
DH31	134688	Pinion , L.H.S.	1
	134689	Pinion , R.H.S.	1
DH32	127999	Washer , thrust, upper	1
DH33	127998	Bush , pinion, upper	1
		SHIMS , pinion	
DH34	120941	Shim , .005 inch	A/R
	130902	Shim , .010 inch	A/R
DH35	128021	"O" Ring	1
DH36	128001	Plug , end	1
DH37	128008	Pin , locating	1
DH38	509537	Circlip , retaining end plug in body	1

(Continued on next page.)

PLATE DH

STEERING—COLUMN COMPONENTS
AND RACK DETAILS

TRIUMPH TR6



STEERING-COLUMN COMPONENTS AND RACK DETAILS

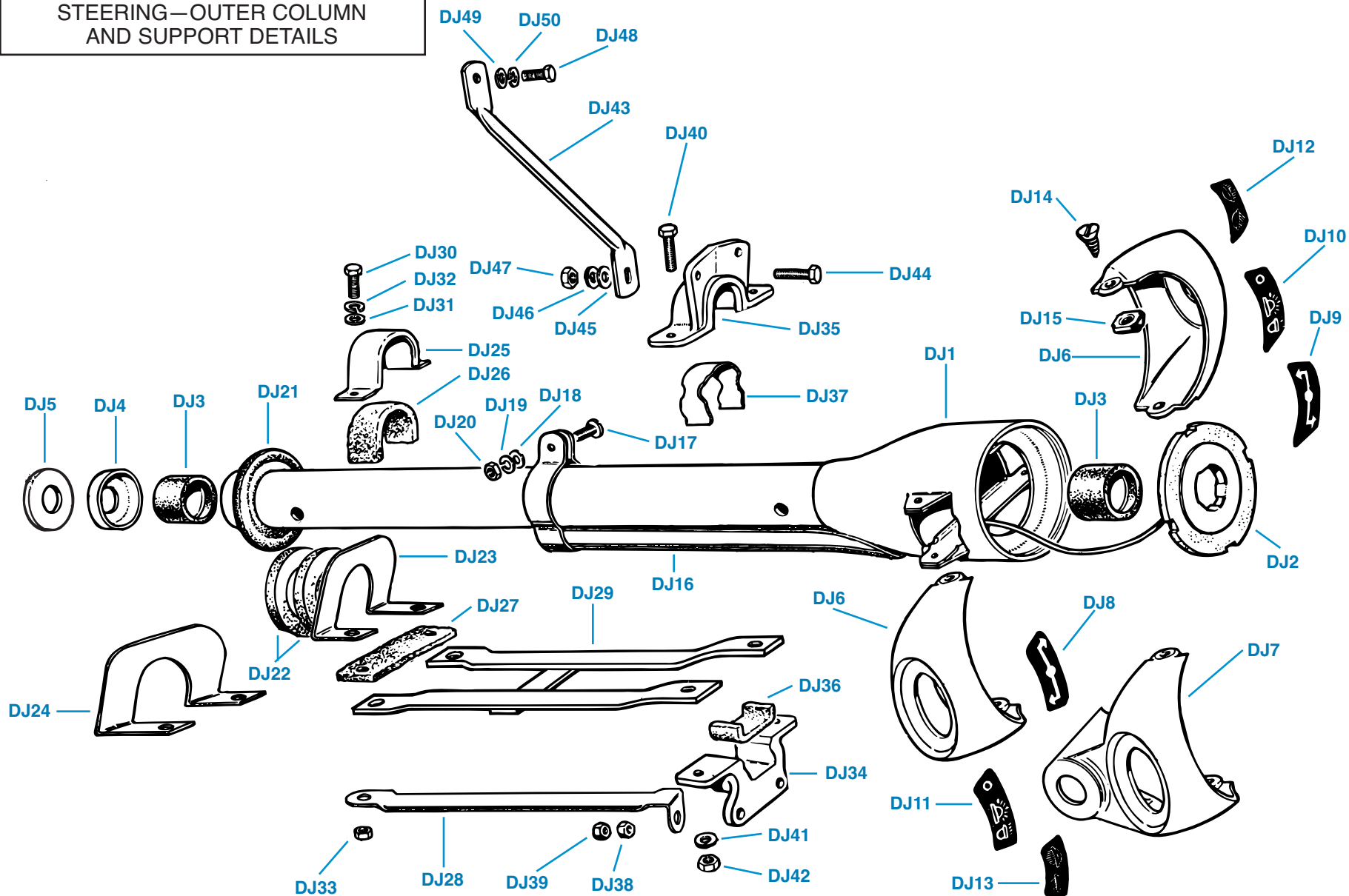
Plate No.	Part No.	Description	No. Off
RACK AND PINION ASSEMBLIES -Continued			
RACK PLUNGER ASSEMBLY			
DH39	120946	Plunger	1
DH40	126765	Spring	1
SHIMS , adjusting spring tension			
DH41	120959	Shim , .002 inch thickness	A/R
	120949	Shim , .004 inch thickness	A/R
	132055	Shim , .010 inch thickness	A/R
DH42	132053	Cap , screwed	1
DH43	133103	Plug , grease	1
DH44	GGF6	Fitting , grease (Substitute for plug when lubricating rack; gear oil is the best lubricant.)	1
INNER TIE-ROD END ASSEMBLY			
DH45	142687	Housing , ball	2
DH46	128024	Ball Pin	2
DH47	139860	Socket , ball, steel	2
DH48	120955	Socket , ball, nylon; alternative to 120955	2
	158732	Plate , locking	2
DH49	120957	SHIMS , adjusting ball pin clearance	
		Shim , .002 inch thickness	A/R
DH50	130031	Shim , .010 inch thickness	A/R
	130032		
DH51	129963	Sleeve , adaptor	2
DH52	120953	Spring	2
DH53	142795	Nut , lock	2
	RFK135	STEERING RACK GAITER KIT (Includes both bellows and all wire clips.)	1
DH54	128004	Bellows , pinion end	1
DH55	120948	Bellows , curb end	1
DH56	CS4009	Clip , hose, small	2
DH57	CS4020	Clip , hose, large, securing bellows to curb end of rack tube	1
DH58	512781	Wire , binding, securing bellows to pinion end of rack tube	1
OUTER TIE-ROD END ASSEMBLY			
DH59	138815	Gaiter	2
DH60	139300	Clip , gaiter	2
DH61	138869	HARDWARE , securing outer tie-rod ends to steering levers on front suspensions	
DH62	YN2910	Nut , nyloc	2
DH63	WP10	Washer , plain	2
DH64	128022	Nut , locking outer tie-rod ends to ball pins	2

Plate No.	Part No.	Description	No. Off
MOUNTING DETAILS , rack and pinion assembly			
DH65	139386	Mounting , rubber	2
DH66	136885	Clamp Assembly , fitted earlier	2
	156024	Clamp Assembly , fitted later	2
DH67	133875	Plate , locating	2
DH68	WP8	Washer , plain, on clamps	4
DH69	YN2908	Nut , nyloc, securing clamps	4

PLATE DJ

STEERING—OUTER COLUMN
AND SUPPORT DETAILS

TRIUMPH TR6



STEERING—OUTER COLUMN AND SUPPORT DETAILS

Plate No.	Part No.	Description	No. Off
DJ1	611618	Steering Column Cowl Assembly , non-locking steering columns	1
	612072	Steering Column Cowl Assembly , locking steering columns, fitted up to body no. 50000CC/CP	1
	154731	Steering Column Cowl Assembly , locking steering columns, fitted after body no. 50000CC/CP	1
DJ2	608462	Slip Ring and Insulator Assembly , horn switch	1
DJ3	209423	BEARING ASSEMBLY , steering column	2
	511305	Delrin Insert	2
DJ4	122718	End Cap , aluminium, lower end of tube	1
DJ5	122719	Bearing Washer , nylon, between end cap and steering column clamp	1
DJ6	708479	Escutcheon , lighting and signal switches	2
DJ7	611974	Escutcheon , signal and overdrive switches; alternative to 708479 when overdrive is fitted	1
		DECALS , switch identification	
DJ8	611011	Decal , turn signal switch, L.H.S.	1
DJ9	611012	Decal , turn signal switch, R.H.S.	1
DJ10	611013	Decal , three-position lighting switch, L.H.S., fitted up to comm. no. CF/CR1	1
DJ11	611014	Decal , three-position lighting switch, R.H.S., fitted up to comm. no. CF/CR1	1
DJ12	621968	Decal , dimmer switch, L.H.S., fitted after comm. no. CF/CR1	1
DJ13	621967	Decal , dimmer switch, R.H.S., fitted after comm. no. CF/CR1	1
		HARDWARE , securing escutcheons to steering column cowl	
DJ14	508051	Screw	2
DJ15	FC2803	Nut , fix	2
DJ16	611369	Cover Assembly , wiring harness	1
		HARDWARE , securing wiring cover to cowl	
DJ17	PT504	Screw , set	1
DJ18	WP138	Washer , plain	1
DJ19	WL205	Washer , lock	1
DJ20	HN2005	Nut	1
DJ21	610608	Grommet , rubber, bulkhead, sealing steering column, fitted up to comm. no. CC/CP75000	1
		BULKHEAD SEALING DETAILS , after comm. no. CC/CP75000	
	631205	Seal , bulkhead, sealing steering column, fitted from comm. no. CC/CP75000 up to CF/CR1	1
DJ22	633679	Seal , bulkhead, sealing steering column fitted after comm. no. CF/CR1	2
DJ23	631208	Seal Retainer , L.H.S.	1
DJ24	631207	Seal Retainer , R.H.S.	1

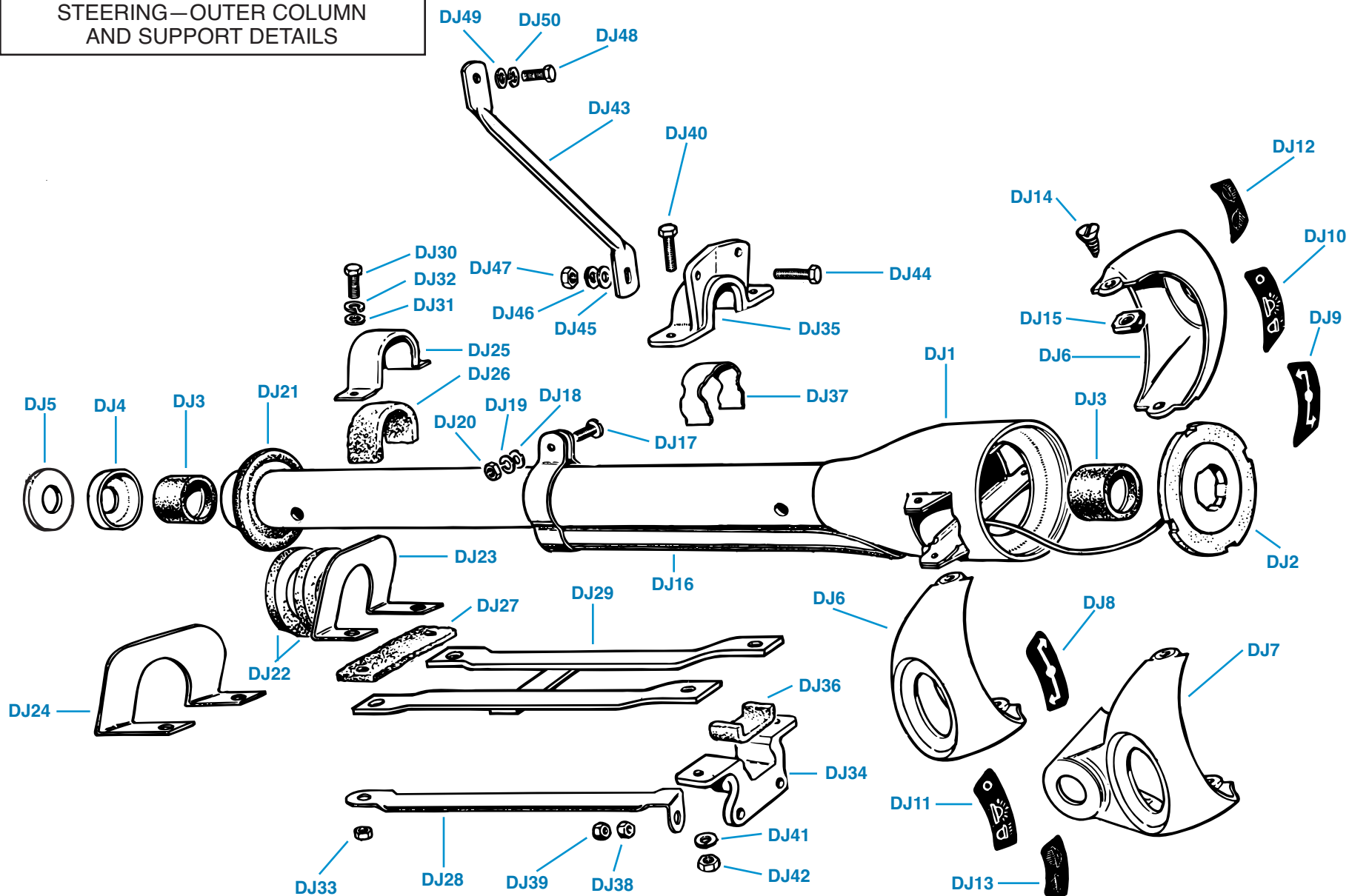
Plate No.	Part No.	Description	No. Off
STEERING COLUMN SUPPORT DETAILS			
FRONT CLAMP DETAILS			
DJ25	608185	Bracket , clamp	1
DJ26	608223	Strip , felt, upper half	1
DJ27	608222	Strip , felt, lower half	1
DJ28	611531	Rod , stiffening, mounted between front and rear clamps, cars without locking steering columns only	1
DJ29	154168	Strap , anti-torque, mounted between front and rear clamps, cars with locking steering columns only	1
		HARDWARE , securing front clamp and stiffening rod to bracket on bulkhead, cars without locking steering columns only	
DJ30	HU706	Screw , set	2
DJ31	WP35	Washer , plain	2
DJ32	WL207	Washer , lock	2
DJ33	HN2007	Nut	2
		HARDWARE , securing front clamp and anti-torque strap to bracket on bulkhead, cars with locking steering columns only	
	HU710	Screw , set	2
	WP35	Washer , plain	2
	WL207	Washer , lock	2
	HN2007	Nut	2
REAR CLAMP DETAILS			
DJ34	611529	Clamp , lower half	1
DJ35	611530	Clamp , upper half	1
DJ36	608188	Strip , felt, in lower half	1
DJ37	609639	Spring , in upper half	1
		HARDWARE , securing rear clamp assembly and stiffening rod, where fitted, to studs welded to metal dash	
DJ38	HN2007	Nut	2
DJ39	JN2107	Nut , jam	2
		HARDWARE , securing upper clamp to lower clamp, cars without locking steering columns only	
DJ40	HU808	Screw , set	2
DJ41	WL208	Washer , lock	2
DJ42	HN2008	Nut	2
		HARDWARE , securing upper clamp to lower clamp and anti-torque strap to clamp assembly, cars with locking steering columns only	
	HU809	Screw , set	2
	WP8	Washer , plain	2
	YN2908	Nut , nyloc	2
	154172	Shroud , Nut	2

(Continued on next page.)

PLATE DJ

STEERING—OUTER COLUMN
AND SUPPORT DETAILS

TRIUMPH TR6



STEERING—OUTER COLUMN AND SUPPORT DETAILS

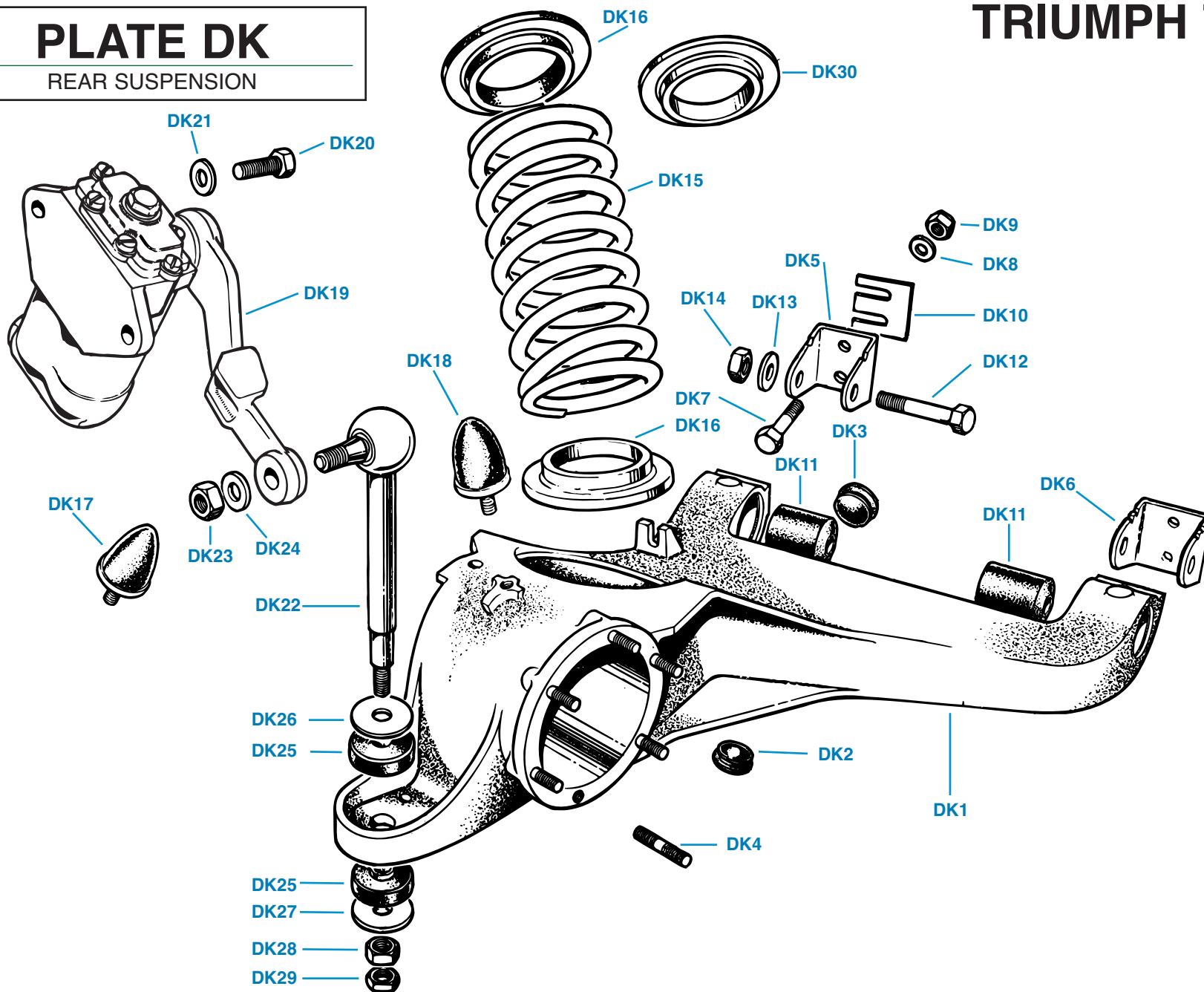
Plate No.	Part No.	Description	No. Off
		STEERING COLUMN SUPPORT DETAILS-Continued	
DJ43	622137	Rod , support, upper rear clamp to bulkhead, fitted to cars without locking steering columns only	1
		HARDWARE , securing support rod to upper rear clamp	
DJ44	HU706	Screw , set	1
DJ45	WP27	Washer , plain	1
DJ46	WL207	Washer , lock	1
DJ47	HN2007	Nut	1
		HARDWARE , securing support rod to captive nut on bulkhead (Use this same hardware to blank any redundant holes.)	
DJ48	HU705	Screw , set	1
DJ49	WP27	Washer , plain	1
DJ50	WL207	Washer , lock	1

Plate No.	Part No.	Description	No. Off
-----------	----------	-------------	---------

PLATE DK

REAR SUSPENSION

TRIUMPH TR6



REAR SUSPENSION

Plate No.	Part No.	Description	No. Off
DK1	308368	Trailing Arm Assembly , R.H.	1
	308367	Trailing Arm Assembly , L.H.	1
DK2	138801	Plug , blanking hole in trailing arms, 7/8 inch diameter	4
DK3	138532	Plug , blanking hole in trailing arms, 1-1/8 inch diameter	4
DK4	TD812	Stud , brake backplate and hub attachment	12
		TRAILING ARM MOUNTINGS, ROAD SPRINGS, REBOUND	
		RUBBERS , fitted up to comm. no. CC61570/CP52867	
	RFK223	TRAILING ARM MOUNTING KIT	2
DK5	141399	Bracket , trailing arm mounting, inner (Identified by one notch.)	2
DK6	141398	Bracket , trailing arm mounting, outer (Identified by two notches.)	2
		HARDWARE AND FITTINGS , securing brackets to chassis frame	
DK7	HB926	Bolt	4
	143677	Bolt	4
DK8	WP9	Washer , plain	8
DK9	YN2909	Nut , nyloc	8
DK10	139363	Shim , for adjusting alignment	A/R
		HARDWARE AND FITTINGS , securing trailing arms to inner and outer brackets	
DK11	137599	Bush , pressed into trailing arms	4
DK12	HB1032	Bolt , trailing arm pivot	4
DK13	WM803	Washer , plain	4
DK14	TN3210	Nut , nyloc	4
DK15	214293	Road Spring , stock grade	2
	TRFCD126	Road Spring , mild competition grade	2
DK16	138823	Insulator , rubber, rear road spring	4
DK17	136758	Rebound Rubber Assembly , mounted on chassis frame	2
DK18	136758	Rebound Rubber Assembly , mounted on trailing arms	2
		TRAILING ARM MOUNTINGS, ROAD SPRINGS, REBOUND	
		RUBBERS , fitted after comm. no. CC61570/CP52867	
		Please Note: The factory made the changes listed below to help correct the problem of rear end "squatting" upon acceleration. Provided that items are replaced in complete car sets, earlier TR6's may benefit from the installation of the components listed here.	
	RFK224	TRAILING ARM MOUNTING KIT	2
	155502	Bracket , trailing arm mounting, inner (Identified by three notches.)	2
	141399	Bracket , trailing arm mounting, outer (Identified by one notch.)	2

Plate No.	Part No.	Description	No. Off
		TRAILING ARM MOUNTINGS, ROAD SPRINGS, REBOUND	
		RUBBERS -Continued	
		TRAILING ARM MOUNTING KIT -Continued	
		HARDWARE AND FITTINGS , securing brackets to chassis frame	
	HB926	Bolt	4
	143677	Bolt	4
	WP9	Washer , plain	8
	YN2909	Nut , nyloc	8
	139363	Shim , for adjusting alignment	A/R
		HARDWARE AND FITTINGS , securing trailing arms to inner and outer brackets	
	137599	Bush , pressed into trailing arms	4
	HB1029	Bolt , trailing arm pivot	4
	WM803	Washer , plain	4
	TN3210	Nut , nyloc	4
	216275	Road Spring , stock grade	2
	TRFCD127	Road Spring , mild competition grade	2
	138823	Insulator , rubber, rear road spring	4
	155719	Rebound Rubber Assembly , mounted on chassis frame	2
	136758	Rebound Rubber Assembly , mounted on trailing arms	2
DK19	211937	Rear Shock Absorber Assembly , R.H.	1
	211936	Rear Shock Absorber Assembly , L.H.	1
		HARDWARE , mounting rear shock absorbers to chassis frame	
DK20	HU1010	Screw , set	4
DK21	508289	Washer , special	4
DK22	141464	LINK ASSEMBLY , rear shock absorbers to trailing arms	2
		HARDWARE , securing links to shock absorbers	
DK23	HN2010	Nut	2
DK24	WL210	Washer , lock	2
		HARDWARE AND FITTINGS , mounting links to trailing arms	
DK25	516038	Mounting , rubber	4
DK26	140416	Washer , upper	2
DK27	140479	Washer , lower	2
DK28	HN2009	Nut	2
DK29	JN2109	Nut , jam	2
DK30	HAC104	Spacer , rear spring, aluminium alloy	A/R
		Please Note: The alloy spacer listed here was designed by Jaguar-Rover-Triumph as a cure for rear wheel camber problems that were not solved by replacement of rear road springs. Be aware that this problem could indicate severe frame or suspension damage that should be investigated before this part is installed.	