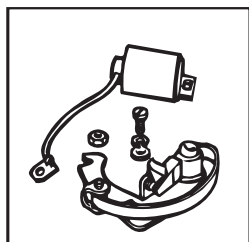
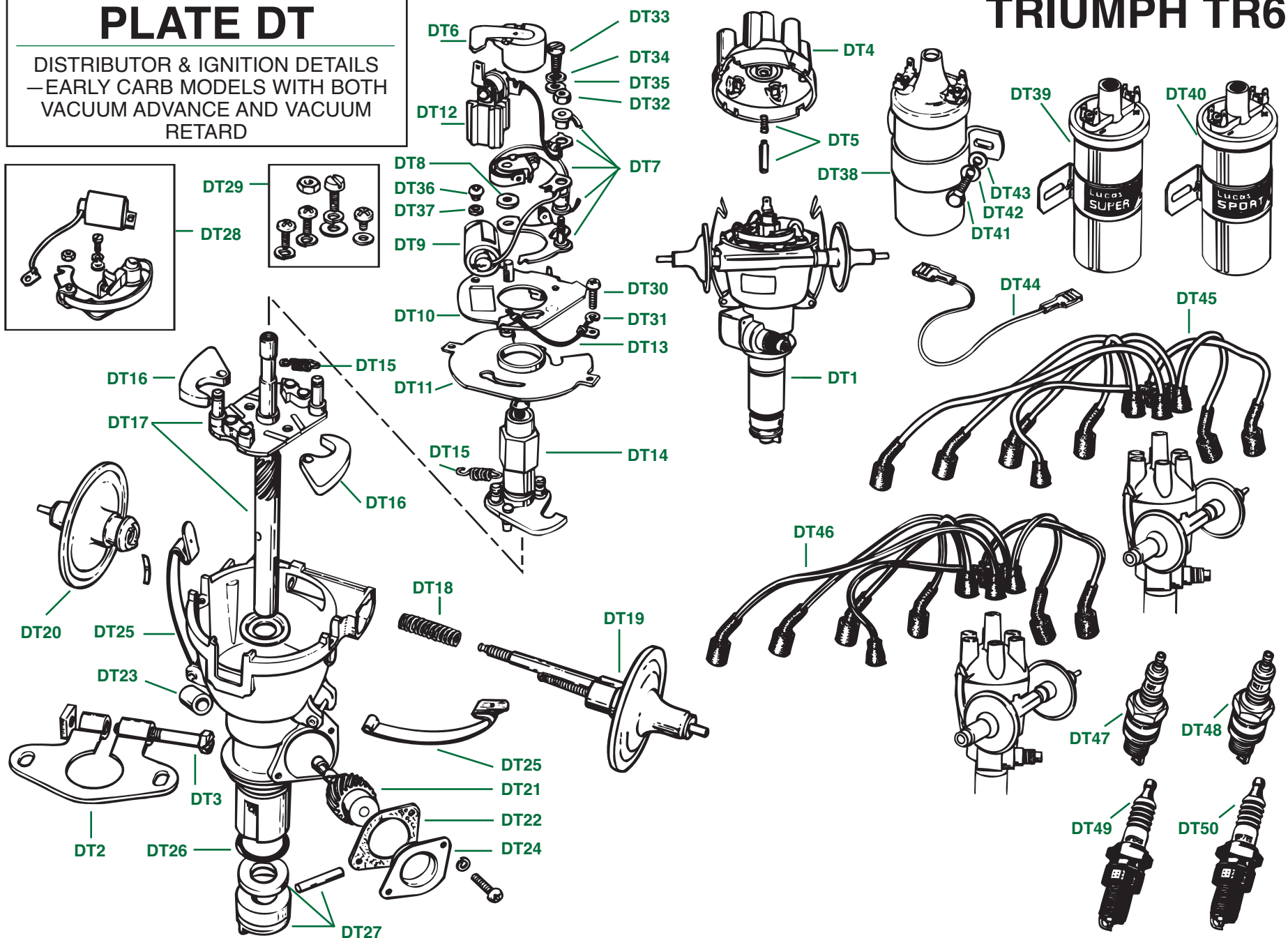
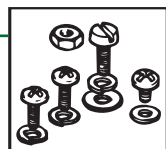


PLATE DT

DISTRIBUTOR & IGNITION DETAILS
— EARLY CARB MODELS WITH BOTH
VACUUM ADVANCE AND VACUUM
RETARD



DT29
DT28



TRIUMPH TR6

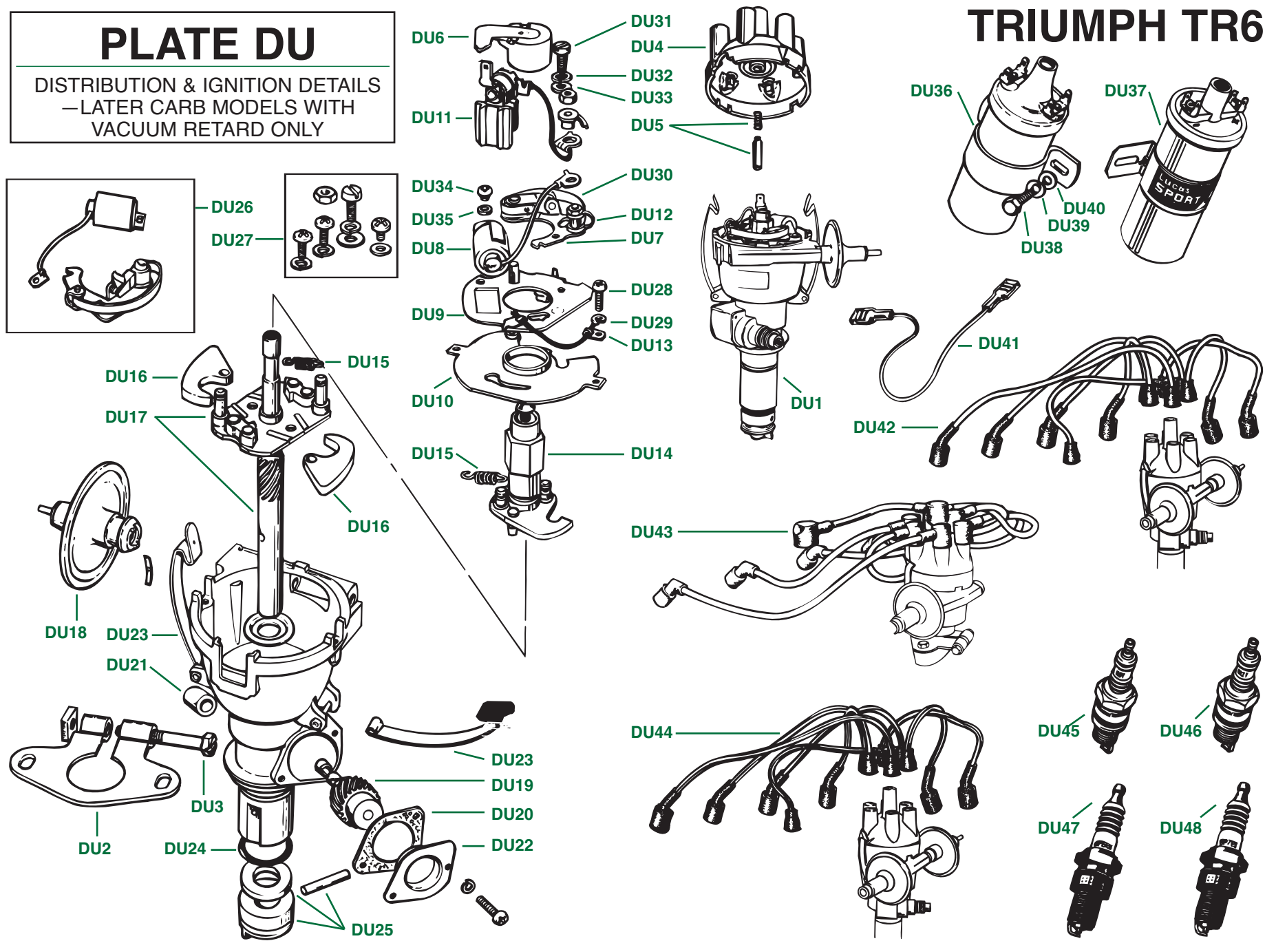
DISTRIBUTOR AND IGNITION DETAILS—EARLY CARB MODELS WITH BOTH VACUUM ADVANCE AND VACUUM RETARD

Plate No.	Part No.	Description	No. Off
DT1	308460	IGNITION DISTRIBUTOR , brand new unit, Lucas model 22D6; Lucas part no. 41202A or 41202B earlier and 41306B later; fitted up to engine no. CC58298 approx.	1
	308460R	IGNITION DISTRIBUTOR , factory rebuilt unit, Lucas model 22D6	1
DT2	59766	PLATE , clamping	1
DT3	58499	Screw , clamping	1
DT4	515856	DISTRIBUTOR CAP ASSEMBLY	1
DT5	501718	Brush and Spring , inside cap	1
DT6	510024	Rotor Arm	1
DT7	503681	CONTACT SET , for distributor with Lucas part no. 41202A	1
DT8	503687	Bush , insulating contact breaker lever	1
	LUCS1	Contact Set , one piece, later distributor	1
DT9	509319	Condenser	1
DT10	503684	Plate , contact breaker base, for distributor with Lucas part no. 41202A	1
	LU54419792	Plate , contact breaker base, for distributor with Lucas part nos. 41202B and 41306B	1
DT11	511010	Plate , contact breaker bearing	1
DT12	511086	Terminal, Bush, and Lead	1
	503688	Washer , insulating terminal	1
DT13	503690	Lead , earth	1
DT14	517176	Cam	1
DT15	513681	Spring Set , automatic advance	1
DT16	517177	Weight , automatic advance	1
DT17	515862	Shaft and Action Plate	1
DT18	511014	Spring	1
DT19	515859	Vacuum Unit , advance	1
DT20	517178	Vacuum Unit , retard	1
	LU60600112	TACHOMETER DRIVE KIT	1
DT21	515864	Gear , tachometer drive	1
DT22	515866	Gasket , tachometer drive cover	1
DT23	515867	Bush , bearing, tachometer drive shaft	1
DT24		Cover , Tachometer drive	NSS
DT25	507083	Clip , securing distributor cap	2
DT26	513682	“O” Ring , oil sealing	1
DT27	513679	Dog , driving	1
	501728	Sundry Parts Set	1
DT28	LUTK50	Tune-Up Kit , distributor	1

Plate No.	Part No.	Description	No. Off
		IGNITION DISTRIBUTOR—Continued	
DT29	LUDZB104	SUNDRY PARTS KIT , distributor	1
		HARDWARE , securing contact breaker bearing to distributor body	
DT30	SLP184	Screw	2
DT31	SLP184	Washer , lock	2
		HARDWARE , securing contact set (points)	
DT32	SLP185	Nut , contact set to post	1
DT33	SLP108	Screw , adjusting	1
DT34	WL205	Washer , lock	1
DT35	WP5	Washer , plain	1
		HARDWARE , securing condenser	
DT36	SLP109	Screw	1
DT37	WP3	Washer , plain	1
		IGNITION COIL DETAILS	
DT38	146112	Lucas Ignition Coil , Lucas model HA12, original type fitted up to comm. no. CF1	1
DT39	LUDLB101	Lucas Ignition Coil , current replacement for original type fitted up to comm. no. CF1	1
DT40	LUDLB1058	Lucas Sport Coil , high output replacement ignition coil for high-performance	1
		HARDWARE , securing ignition coil to engine block	
DT41	HU804	Screw , set	2
DT42	WL208	Washer , lock	2
DT43	WP8	Washer , plain	2
		IGNITION WIRE DETAILS	
		LOW-TENSION LEADS	
DT44	125957	Wire , white with black tracer, coil to distributor, fitted up to comm. no. CF1	1
		HIGH-TENSION CABLES	
DT45	GHT144	Ignition Cable Set , original green cable; straight connections into distributor cap, as fitted up to comm. no. CF12500, comprising all seven high-tension cables	1
DT46	RFK618	IGNITION CABLE SET , Lucas-brand high-performance solid-copper wire, yellow with two black tracers, comprising all seven high-tension cables	1
	CQB204/120	Lucas High-Performance Ignition Cable ; 120-inch length for use as required in making special ignition cables, no fittings included	A/R
		SPARK PLUGS	
DT47	CHN9Y	Champion Spark Plug , no. N9Y, fitted up to comm. no. CF1, may be used anytime a colder plug is required	6
DT48	CHN12Y	Champion Spark Plug , no. N12Y, fitted after comm. no. CF1, may be used anytime a hotter plug is required	6
DT49	NGKBP6ES	NGK Brand Spark Plug , standard heat range for TR6	6
DT50	NGKBP7ES	NGK Brand Spark Plug , colder plug for high-performance engines	6

PLATE DU

DISTRIBUTION & IGNITION DETAILS
— LATER CARB MODELS WITH
VACUUM RETARD ONLY



TRIUMPH TR6

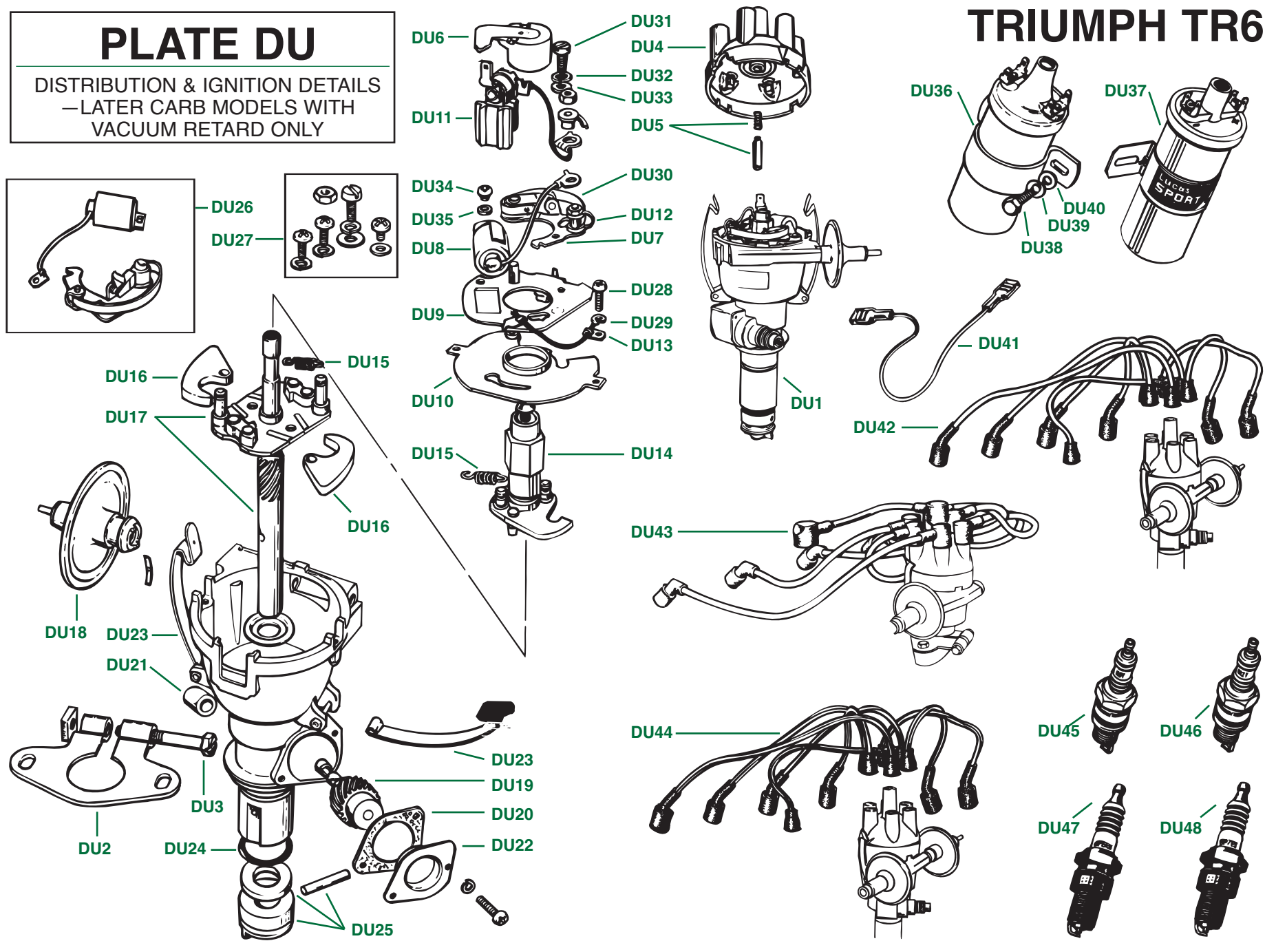
DISTRIBUTORS & IGNITION DETAILS—LATER CARB MODELS WITH VACUUM RETARD ONLY

Plate No.	Part No.	Description	No. Off
DU1	217521	IGNITION DISTRIBUTOR , brand new unit, Lucas model 22D6, Lucas part no. 41352A; fitted from engine no. CC58298 approx. up to CC75000	1
	217521R	IGNITION DISTRIBUTOR , factory rebuilt unit; fitted from engine no. CC58298 approx. up to CC75000	1
	218100	IGNITION DISTRIBUTOR , brand new unit, Lucas model 22D6; Lucas part no. 41385A; fitted from engine no. CC75000 up to CF12500 approx.	1
	218100R	IGNITION DISTRIBUTOR , factory rebuilt unit; fitted from engine no. CC75000 up to CF12500 approx.	1
	TKC517	IGNITION DISTRIBUTOR , brand new unit, Lucas model 22D6; Lucas part no. 41558A or 41558D; fitted after engine no. CF12500	1
	TKC517R	IGNITION DISTRIBUTOR , factory rebuild unit; fitted after engine no. CF12500	1
DU2	59766	Plate , clamping	1
DU3	58499	Screw , clamping	1
DU4	515856	DISTRIBUTOR CAP ASSEMBLY	1
DU5	501718	Brush and Spring , inside cap	1
DU6	510024	Rotor Arm	1
DU7	LUCS1	Contact Set (Points)	1
DU8	509319	Condenser	1
DU9	LU54419792	Plate , contact breaker base	1
DU10	511010	Plate , contact breaker bearing	1
DU11	511086	Terminal , Bush, and Lead	1
DU12	503688	Washer , insulating terminal	1
DU13	503690	Lead , earth	1
DU14	LU54414859	Cam , for distributors with Lucas part nos. 41352A and 41385A	1
	LU54413780	Cam , for distributors with Lucas part nos. 41558A and 41558D	1
DU15	LU54423078	Spring Set , automatic advance, for distributor with Lucas part no. 41352A	1
	LU54424202	Spring Set , automatic advance, for distributor with Lucas part no. 41385A	1
	LU54426281	Spring Set , automatic advance, for distributors with Lucas part nos. 41558A and 41558D	1
DU16	517177	Weight , automatic advance	2
DU17	515862	Shaft and Action Plate	
DU18	LU54423098	Vacuum Unit , retard, for distributor with Lucas part no. 41352A	1
	RTC1423	Vacuum Unit , retard, for distributors with Lucas part nos. 41385A, 41558A, and 41558D	1

Plate No.	Part No.	Description	No. Off
		IGNITION DISTRIBUTOR—Continued	
	LU60600112	TACHOMETER DRIVE KIT	
DU19	515864	Gear , tachometer drive	1
DU20	515866	Gasket , tachometer drive cover	1
DU21	515867	Bush , bearing, tachometer drive shaft	1
DU22		Cover , tachometer drive	NSS
DU23	507083	Clip , securing distributor cap	2
DU24	513682	"O" Ring , oil sealing	1
DU25	513679	Dog , driving	1
	501728	Sundry Parts Set	1
DU26	LUTK50	Tune-Up Kit , distributor	1
DU27	LUDZB104	SUNDRY PARTS KIT , distributor	1
		HARDWARE , securing contact breaker bearing to distributor body	
DU28	SLP183	Screw	2
DU29	SLP184	Washer , lock	2
		HARDWARE , securing contact set (points)	
DU30	SLP185	Nut , contact set to post	1
DU31	SLP108	Screw , adjusting	1
DU32	WL205	Washer , lock	1
DU33	WP5	Washer , plain	1
		HARDWARE , securing condenser	
DU34	SLP109	Screw	1
DU35	WP3	Washer , plain	
		IGNITION COIL DETAILS	
DU36	146112	Lucas Ignition Coil , Lucas model HA12, original type, fitted up to comm. no. CF1	1
	LUDLB101	Lucas Ignition Coil , current replacement for original type, fitted up to comm. no. CF1	1
	158830	Lucas Ignition Coil , Lucas model 15C6, original type, fitted from comm. no. CF1 up to CF50000	1
	UKC3555	Lucas Ignition Coil , Lucas model 15C6, fitted after comm. no. CF50000	1
	LUDLB102	Lucas Ignition Coil , current replacement for original type, fitted after comm. no. CF1	1
DU37	LUDLB105B	Lucas Sport Coil , high output replacement ignition coil, for high-performance	1
		HARDWARE , securing ignition coil to engine block	1
DU38	HU804	Screw , set	2
DU39	WL208	Washer , lock	2
DU40	WP8	Washer , plain	2

PLATE DU

DISTRIBUTION & IGNITION DETAILS
— LATER CARB MODELS WITH
VACUUM RETARD ONLY



TRIUMPH TR6

DISTRIBUTOR & IGNITION DETAILS—LATER CARB MODELS WITH VACUUM RETARD ONLY

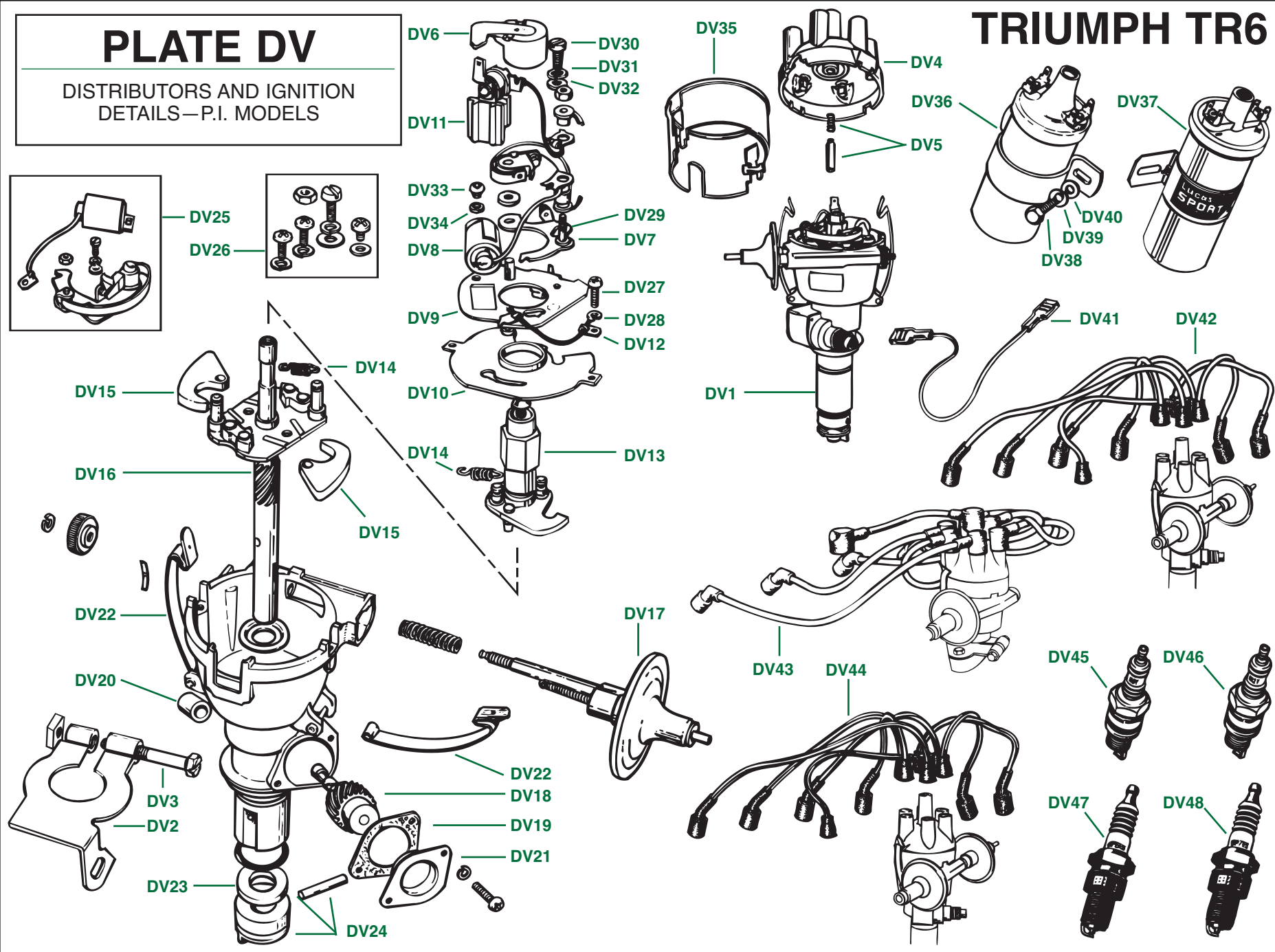
Plate No.	Part No.	Description	No. Off
IGNITION WIRE DETAILS			
LOW-TENSION LEADS			
DU41	125957	Wire , white with black tracer, coil to distributor, fitted up to comm. no. CF1	1
	518688	Wire , white with black tracer, coil to distributor, fitted after comm. no. CF1	1
HIGH-TENSION CABLES			
DU42	GHT144	Ignition Cable Set , original green cable; straight connections into distributor cap, as fitted up to comm. no. CF12500; comprising all seven high-tension cables	1
DU43	GHT156	Ignition Cable Set , original green cable; right-angle connections into distributor cap, as fitted after comm. no. CF12500; comprising all seven high-tension cables	1
DU44	RFK618	Ignition Cable Set , Lucas-brand high-performance solid-copper wire, yellow with two black tracers; comprising all seven high-tension cables	1
	CQB204/120	Lucas High-Performance Ignition Cable ; 120-inch length for use as required in making special ignition cables; no fittings included	A/R
SPARK PLUGS			
DU45	CHN9Y	Champion Spark Plug , no. N9Y, fitted up to comm. no. CF1; may be used anytime a colder plug is required	6
DU46	CHN12Y	Champion Spark Plug , no. N12Y, fitted after comm. no. CF1; may be used anytime a hotter plug is required	6
DU47	NGKBP6ES	NGK Brand Spark Plug , standard heat range for TR6	6
DU48	NGKBP7ES	NGK Brand Spark Plug , colder plug for high-performance engines	6

Plate No.	Part No.	Description	No. Off
-----------	----------	-------------	---------

PLATE DV

DISTRIBUTORS AND IGNITION
DETAILS—P.I. MODELS

TRIUMPH TR6



DISTRIBUTORS AND IGNITION DETAILS—P.I. MODELS

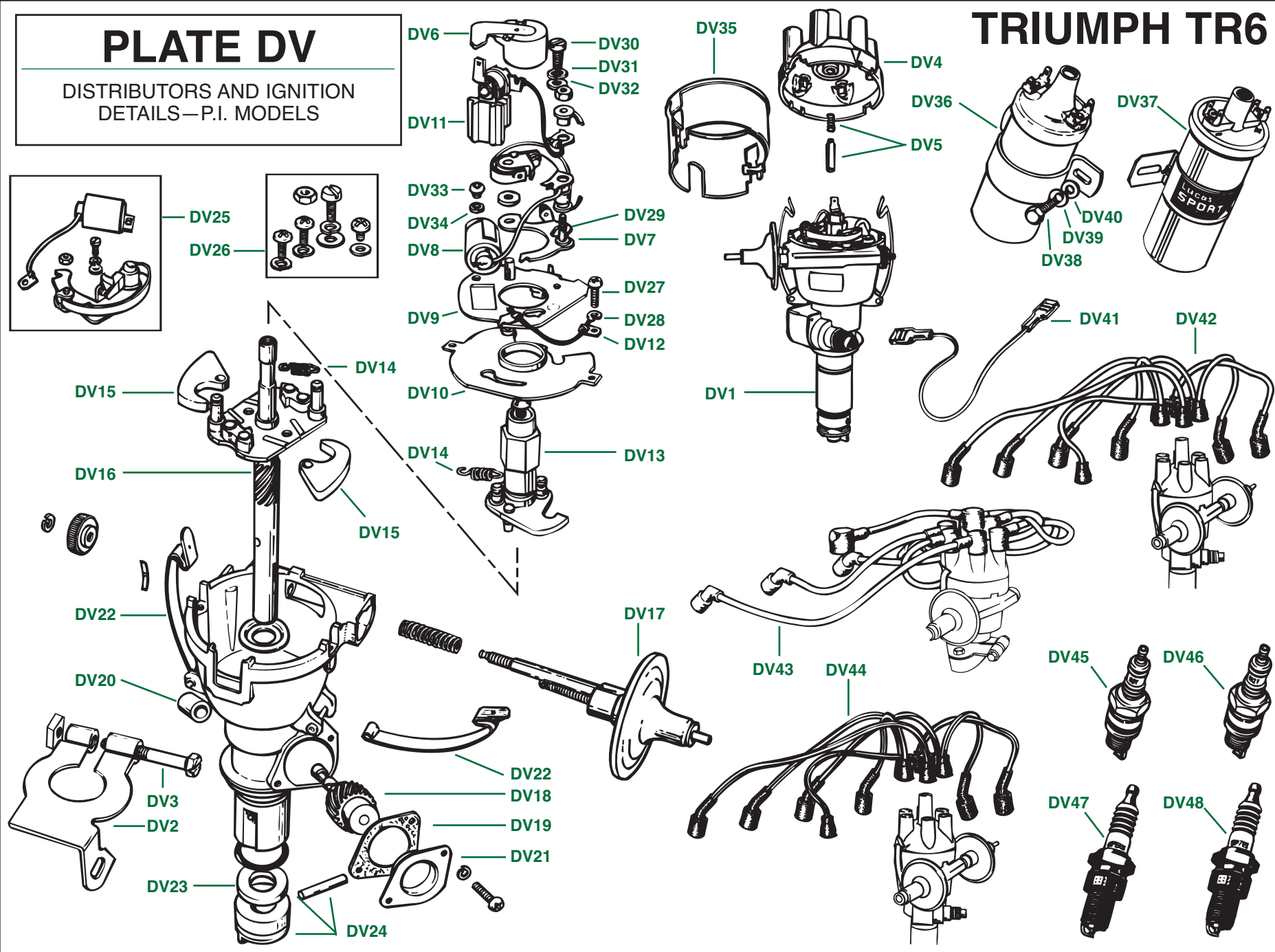
Plate No.	Part No.	Description	No. Off
DV1	214459	IGNITION DISTRIBUTOR , brand new unit, Lucas model 22D6; Lucas part no. 41219; fitted up to engine no. CR1	1
	214459R	IGNITION DISTRIBUTOR , factory rebuilt unit; fitted up to engine no. CR1	1
	219243	IGNITION DISTRIBUTOR , brand new unit, Lucas model 22D6; Lucas part no. 41501; fitted from engine no. CR1 up to CR2845	1
	219243R	IGNITION DISTRIBUTOR , factory rebuilt unit, fitted from engine no. CR1 up to CR2845	1
	TKC1441	IGNITION DISTRIBUTOR , brand new unit, Lucas model 22D6; Lucas part no. 41542; fitted after engine no. CR2845	1
	TKC1441R	IGNITION DISTRIBUTOR , factory rebuilt unit; fitted after engine no. CR5000	1
DV2	508534	Plate , clamping	1
DV3	519935	Screw , clamping, fitted up to engine no. CR1	1
	RTC289	Screw , clamping, fitted after engine no. CR1	1
DV4	LUddb117	DISTRIBUTOR CAP ASSEMBLY	1
DV5	501718	Brush and Spring , inside cap	1
DV6	LUdRB106	Rotor Arm	1
DV7	LUdSB101	Contact Set (Points)	1
DV8	LUdCB101	Condenser	1
DV9	LU422318	Plate , contact breaker base, fitted to distributors with Lucas part no. 41219	1
	LU54419792	Plate , contact breaker base, fitted to distributors with Lucas part nos. 41501 and 41542	1
DV10	LU54412154	Plate , contact breaker bearing	1
DV11	LU54413549	Terminal , Bush, and Lead, fitted to distributors with Lucas part no. 41219	1
	LU54417459	Terminal , Bush, and Lead, fitted to distributors with Lucas part nos. 41501 and 41542	1
DV12	LU421088	Lead , earth	1
DV13	LU54413291	Cam , fitted to distributors with Lucas part no. 41219	1
	LU54412707	Cam , fitted to distributors with Lucas part no. 41501	1
	LU54413923	Cam , fitted to distributors with Lucas part no. 41542	1
DV14	LU54413186	Spring Set , automatic advance, fitted to distributors with Lucas part no. 41219	1
	LU54425920	Spring Set , automatic advance, fitted to distributors with Lucas part no. 41501	1
	LU54426278	Spring Set , automatic advance, fitted to distributors with Lucas part no. 41542	1
DV15	LU54413922	Weight , automatic advance, fitted to distributors with Lucas part nos. 41219 and 41542	2
	LU54413073	Weight , automatic advance, fitted to distributors with Lucas part no. 41501	2
DV16	LU54415784	Shaft and Action Plate	1

Plate No.	Part No.	Description	No. Off
		IGNITION DISTRIBUTOR—Continued	
DV17	LU54420500	Vacuum Unit ; not fitted to distributors with Lucas part no. 41219; fitted to distributors with Lucas part nos. 41501 and 41542 but not connected to air intake system	1
	LU60600112	TACHOMETER DRIVE KIT	1
DV18	515864	Gear , tachometer drive	1
DV19	515866	Gasket , tachometer drive cover	1
DV20	515867	Bush , bearing, tachometer drive shaft	1
DV21		Cover , tachometer drive	NSS
DV22	507083	Clip , securing distributor cap	2
DV23	513682	"O" Ring , oil sealing	1
DV24	513679	Dog , driving	1
DV25	LUTK50	Tune-Up Kit , distributor	1
DV26	LUDZB104	SUNDRY PARTS KIT , distributor	1
		HARDWARE , securing contact breaker bearing to distributor body	
DV27	SLP183	Screw	2
DV28	SLP184	Washer , lock	2
		HARDWARE , securing contact set (points)	
DV29	SLP185	Nut , contact set to post	1
DV30	SLP108	Screw , adjusting	1
DV31	WL205	Washer , lock	1
DV32	WP5	Washer , plain	1
		HARDWARE , securing condenser	
DV33	SLP109	Screw	1
DV34	WP3	Washer	1
DV35	149992	Cover , suppression, fitted up to eng. no. CR2845	1
	RTC1424	Cover , suppression, fitted after eng. no. CR2845	1
		IGNITION COILS	
DV36	146112	Lucas Ignition Coil , Lucas model HA12, original type, fitted up to commission no. CR1	1
	LUdLB101	Lucas Ignition Coil , current Lucas replacement for original type, fitted up to comm. no. CR1	1
	158830	Lucas Ignition Coil , Lucas model 15C6, original type, fitted after comm. no. CR1	1
	LUdLB102	Lucas Ignition Coil , current Lucas replacement for original type, fitted after comm. no. CR1	1
DV37	LUdLB105B	Lucas Sport Coil , high output ignition coil for high performance	1
		HARDWARE , securing ignition coil to engine block	
DV38	HU804	Screw , set	2
DV39	WL208	Washer , lock	2
DV40	WP8	Washer , plain	2

PLATE DV

DISTRIBUTORS AND IGNITION
DETAILS—P.I. MODELS

TRIUMPH TR6



DISTRIBUTORS AND IGNITION DETAILS—P.I. MODELS

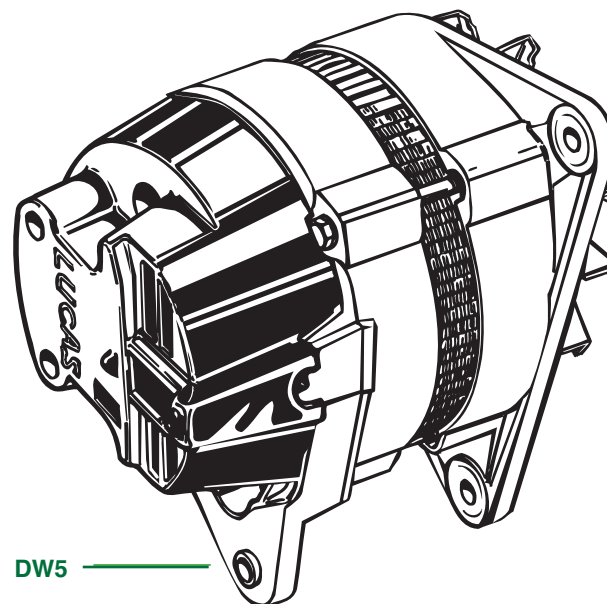
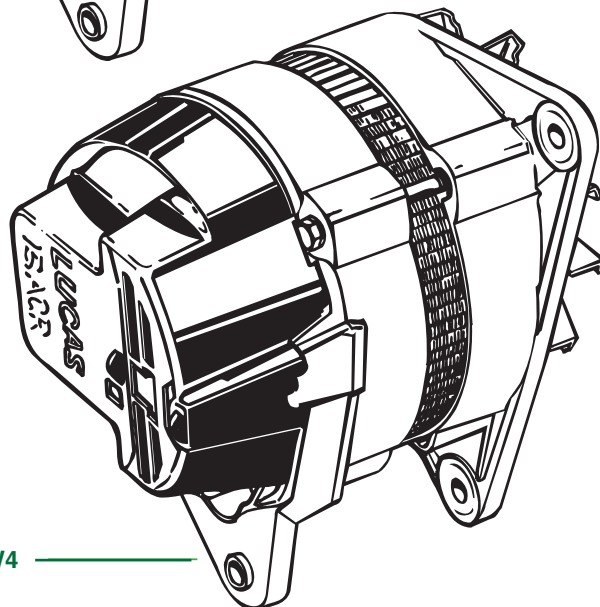
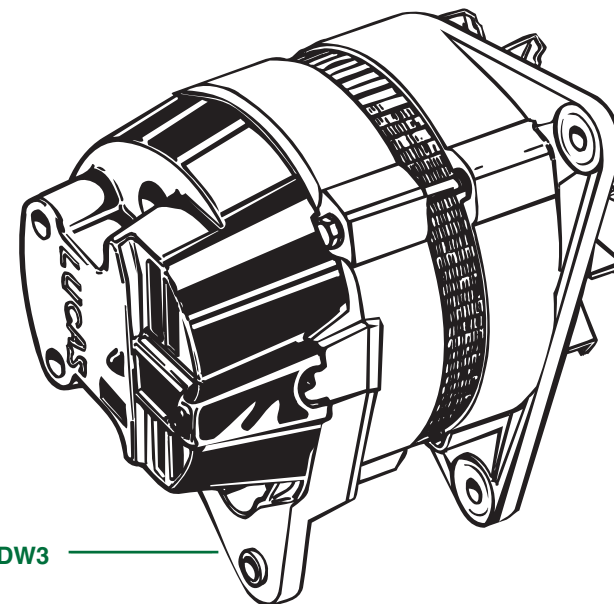
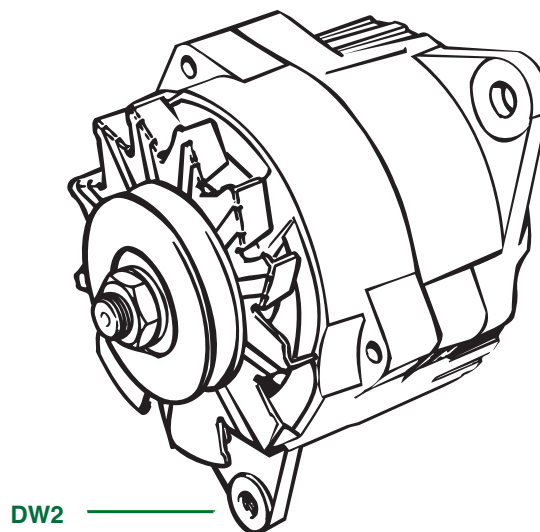
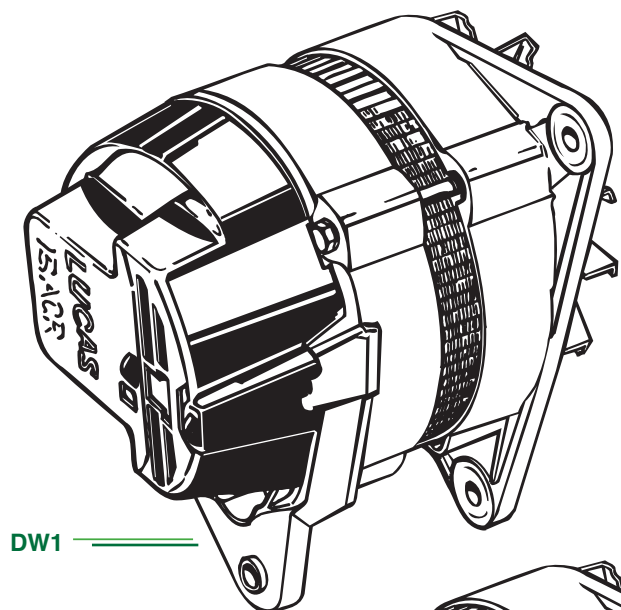
Plate No.	Part No.	Description	No. Off
IGNITION WIRING			
LOW-TENSION LEADS			
DV41	125957	Wire , white with black tracer, coil to distributor, fitted up to comm. no. CR1	14
	518688	Wire , white with black tracer, coil to distributor, fitted after comm. no. CR1	1
HIGH-TENSION CABLES			
DV42	GHT144	Ignition Cable Set , original green cable; straight connections into distributor cap, as fitted up to comm. no. CR5000; comprising all seven high-tension cables	1
DV43	GHT156	Ignition Cable Set , original green cable; right-angle connections into distributor cap, as fitted after comm. no. CR5000; comprising all seven high-tension cables	1
DV44	RFK618	Ignition Cable Set , Lucas-brand high-performance solid-copper wire, yellow with two black tracers; comprising all seven high-tension cables	A/R
	CQB204/120	Lucas High-Performance Ignition Cable; 120-inch length for use as required for making special ignition cables; no fittings included	
SPARK PLUGS			
DV45	CHN9Y	Champion Spark Plug , no. N9Y; normal fitment; colder plug	6
DV46	CHN12Y	Champion Spark Plug , no. N12Y, for use anytime a hotter plug is required	6
DV47	NGKBP6ES	NGK Brand Spark Plug , standard heat range	6
DV48	NGKBP7ES	NGK Brand Spark Plug , colder plug for high-performance engines	6

Plate No.	Part No.	Description	No. Off
-----------	----------	-------------	---------

PLATE DW

ALTERNATORS—OVERVIEW OF APPLICATIONS

TRIUMPH TR6



ALTERNATORS—OVERVIEW OF APPLICATIONS

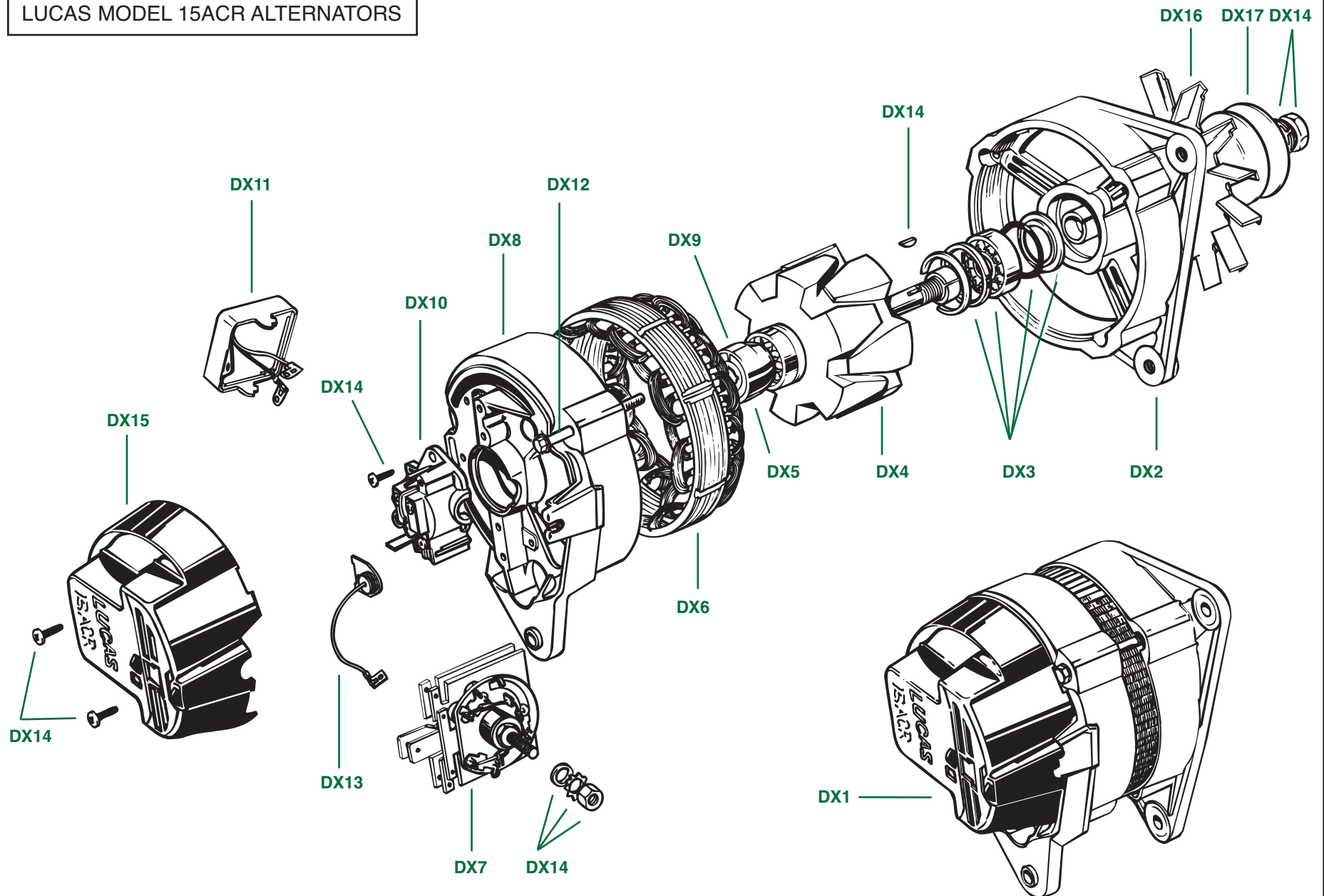
Plate No.	Part No.	Description	No. Off
<p>Please Note: This section lists part numbers for all alternator units fitted to the TR6 model range, along with part numbers of corresponding rebuilt alternators for all applications. If repair parts are desired, a full parts breakdown for each alternator is included in the following Sections DX, DY, DZ, EA, and EB</p> <p>LUCAS BRAND ALTERNATORS, model 15ACR, fitted from 1969 up to 1971</p>			
DW1	215346	Alternator , with Lucas part nos. 23562A, 23563D, 23581A, 23581B, 23581E; negative ground, 12 volts, 28 amps; fitted to 1969 and 1970 TR6 models	1
	215364R	Alternator , factory rebuilt unit, for the application described in the previous listing	1
	217772	Alternator , with Lucas part nos. 23634A, 23634B, 23634D, 23636A, 23636B, 23636D; negative ground, 12 volts, 28 amps, fitted to non-U.S. TR6 model during the 1971 model year	1
	217772R	Alternator , factory rebuilt unit, for the application described in the previous listing	1
<p>DELCO REMY ALTERNATORS, model DN460, fitted up to 1972; alternative to Lucas-brand alternators</p>			
DW2	218042	Alternator , with Delco part no. 7982648; negative ground, 12 volts, 35 amps; fitted to U.S. TR6 models up to 1972, up to comm. no. CC75000, as an alternative to Lucas-brand alternators	1
	218042R	Alternator , factory rebuilt unit, for the application described in the previous listing	1
	217456	Alternator , with Delco part no. 7982648; negative ground 12 volts, 35 amps; fitted to non-U.S. TR6 models up to 1972, up to comm. no. CP75000 as an alternative to Lucas-brand alternators	1
	217456R	Alternator , factory rebuilt unit, for the application described in the previous listing	1

Plate No.	Part No.	Description	No. Off
<p>LUCAS BRAND ALTERNATORS, model 16ACR, fitted to non-U.S. models after 1972, after comm. no. CR1</p>			
DW3	219267	Alternator , with Lucas part nos. 23747A, 23750A, 23795A; negative ground, 12 volts, 34 amps	1
	219267R	Alternator , factory rebuilt unit, for the application described in the previous listing	1
<p>LUCAS BRAND ALTERNATORS, model 17ACR, fitted to U.S. TR6 models during the 1971 and 1972 model years, from comm. no. CC65347 up to CF1</p>			
DW4	217988	Alternator , with Lucas part nos. 23635A, 23635B, 23642A, 23642B, 23745A, 23748; negative ground, 12 volts, 36 amps	1
	217988R	Alternator , factory rebuilt unit, for the application described in the previous listing	1
<p>LUCAS BRAND ALTERNATORS, model 18ACR, fitted to U.S. models after comm. no. CF1</p>			
DW5	218742	Alternator , with Lucas part nos. 23739A, 23740A; negative ground, 12 volts, 45 amps; fitted from comm. no. CF1 up to CF25000	1
	218742R	Alternator , factory rebuilt unit, for the application described in the previous listing	1
	TKC2757	Alternator , with Lucas part no. 23860; negative ground, 12 volts, 45 amps; fitted after comm. no. CF25000	1
	TKC2757R	Alternator , factory rebuilt unit, for the application described in the previous listing	1

PLATE DX

LUCAS MODEL 15ACR ALTERNATORS

TRIUMPH TR6



LUCAS MODEL 15ACR ALTERNATORS

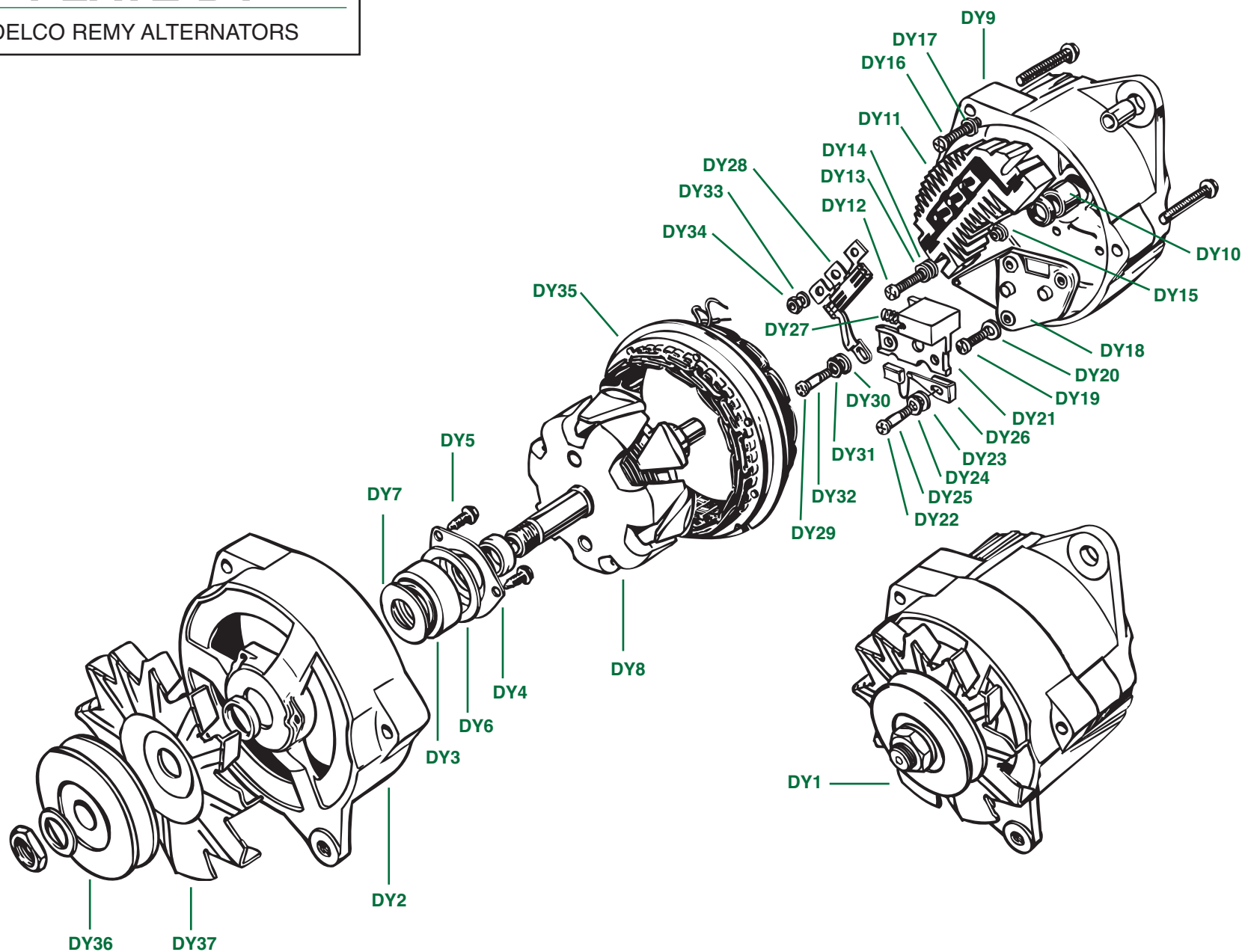
Plate No.	Part No.	Description	No. Off
		Please Note: Lucas Model 15ACR alternators were fitted to U.S. TR6 models up until the end of the 1970 model year and to non-U.S. TR6 models up until the end of the 1971 model year. The alternators which were fitted officially are listed below, but individual cars may have been fitted with other 15ACR alternators. If it is possible, you should start by determining the Lucas part number of an alternator needing repair. The Lucas part number is found on an aluminium tag fixed to the body of the alternator next to the plastic rear cover, but these tags are often removed from rebuilt alternators. If the alternator in hand had a different part number from those listed below or if you are unable to determine the part number, call The Roadster Factory for assistance. The best course of action for most individual enthusiasts is to fit a rebuilt alternator of the correct specification for the model and year of the car.	
DX1	215346	ALTERNATOR , Lucas Model 15ACR, Lucas part nos. 23562A, 23562B, 23563D, 23581A, 23581B, 23581E; negative ground, 12 volts, 28 amps, fitted to 1969 and 1970 TR6 models	1
	215346R	ALTERNATOR , factory rebuilt unit, for the application described in the previous listing	1
	217772	ALTERNATOR , Lucas Model 15ACR, Lucas part nos. 23634A, 23634B, 23634D, 23636A, 23636B, 23636D; negative ground, 12 volts, 28 amps, fitted to non-U.S. TR6 during the 1971 model year	1
	217772R	ALTERNATOR , factory rebuilt unit, for the application described in the previous listing	1
DX2	LU54219542	FRAME , drive end, fitted to alternators with Lucas part nos. 23562A, 23581A, 23634A, and 23636A	1
	LU54200544	FRAME , drive end, fitted to alternators with Lucas part nos. 23562B, 23562D, 23581B, 23581E, 23634B, 23634D, 23636B, and 23636D	1
DX3	LU54219310	Bearing Kit , drive end	1
DX4	LU54201945	ROTOR	1
DX5	LU54217372	Slip-Ring	1
DX6	LU54201048	Stator	1
DX7	LU83192	Rectifier	1
DX8	LU54218657	Frame , slip-ring end, fitted to alternators with Lucas part nos. 23562A, 23581A, 23634A, and 23636A	1
	LU54200781	Frame , slip-ring end, fitted to alternators with Lucas part nos. 23562B, 23562D, 23581B, 23581E, 23634B, 23634D, 23636B, and 23636D	1
DX9	LU54219312	Bearing Kit , slip-ring end	1

Plate No.	Part No.	Description	No. Off
		ALTERNATOR —Continued	
DX10	LU54200349	BRUSH BOX ASSEMBLY	1
	LU54219368	Brushes Set	1
DX11	LU37565	Regulator , voltage	1
DX12	LU54113722	Through Bolt Kit	1
DX13	LU54048364	Surge Protection Device	1
DX14	LU54218702	Sundry Parts Kit	1
DX15	LU54219322	Cover , rear, plastic	1
		PULLEY AND FAN , fitted to all models up to comm. no. CC/CP50000	
DX16	147990	Fan , alternator	1
DX17	147530	Pulley, drive , 3/8-inch belt groove	1
		PULLEY AND FAN , fitted to all models up to comm no. CC/CP65347	
	147990	Fan , alternator	1
	154334	Pulley, drive , 3/8-inch belt groove	1
		PULLEY AND FAN , fitted to non-U.S. models, after comm. no. CP65347	
	147900	Fan , alternator	1
	154334	Pulley, drive , 3/8-inch belt groove	1
		PULLEY AND FAN , fitted to U.S. models, after comm. no. CC65347	
	156891	Fan , alternator	1
	155948	Pulley, drive , 1/2-inch belt groove	1

PLATE DY

DELCO REMY ALTERNATORS

TRIUMPH TR6



DELCO REMY ALTERNATORS

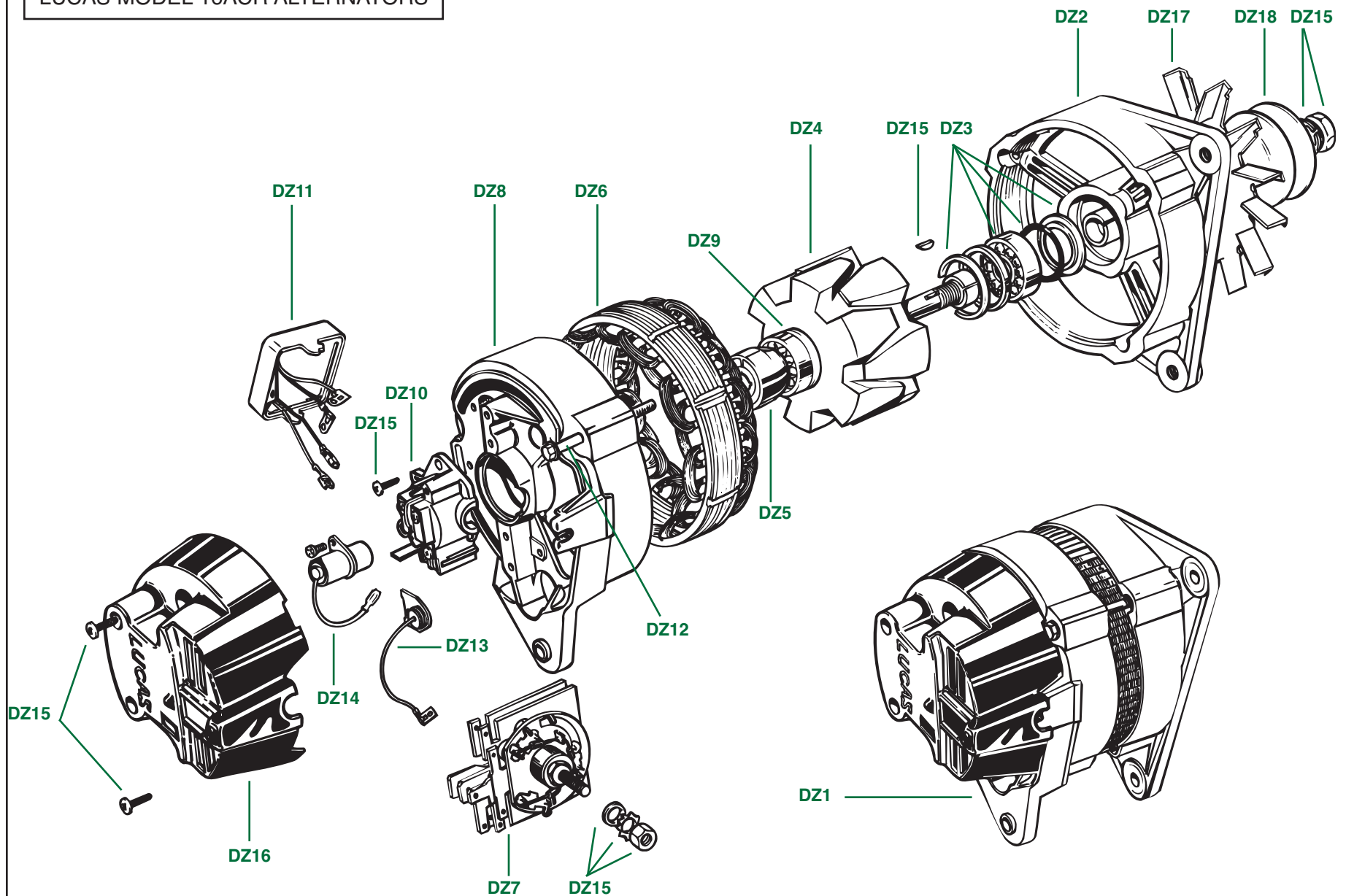
Plate No.	Part No.	Description	No. Off
		Please Note: Delco Remy alternators were fitted as alternatives to Lucas-brand alternators to an unknown number of TR6 models prior to 1973. Although a complete catalogue listing is provided in this section for the information of interested enthusiasts, no new or rebuilt Delco Remy alternators are available at the time of writing, and parts are difficult to find for repairs. For all except those who wish to keep their Delco Remy alternators for originality's sake, we recommend fitting a Lucas model 17ACR alternator as listed in Section EA.	
DY1	218042	ALTERNATOR , Delco Remy brand, Delcotron model DN460, part models as an alternative to Lucas-brand alternators, fitted up to comm. no. CF1	1
	218042R	ALTERNATOR , factory rebuilt unit, for the application described in the previous listing	1
	217456	ALTERNATOR , Delco Remy brand, Delcotron model DN460, part no. 7982648; negative ground, 12 volts, 35 amps, fitted to non-U.S. models as an alternative to Lucas-brand alternators, up to comm. no. CR1	1
	217456R	ALTERNATOR , factory rebuilt unit, for the application described in the previous listing	1
DY2	520281	Frame , drive end	1
DY3	520287	Bearing , drive end	1
DY4	520283	Plate , retaining bearing	1
DY5	520282	Screw , securing retaining plate to frame	3
DY6	520284	Collar , alternator shaft, inner	1
DY7	520285	Collar , alternator shaft, outer	1
	520286	Slinger , grease	1
DY8	520280	Rotor Assembly ,	1
DY9	520293	Frame , slip-ring end	1
DY10	520295	Bearing , slip-ring end	1
	520296	Seal Assembly	1
	520294	Bush	1
DY11	520297	Rectifier Bridge and Insulator Assembly	1
		HARDWARE , securing rectifier bridge assembly to frame; "live" side of rectifier bridge	
DY12	520298	Screw	1
DY13	520299	Washer , plain	1
DY14	520300	Washer , fibre, insulating	1
DY15		Insulation Bush , plastic	NSS
		HARDWARE , securing rectifier bridge assembly to frame; "earth" side of rectifier bridge	
DY16	520298	Screw	1
DY17	520299	Washer , plain	1
DY18	520307	Regulator , voltage	1

Plate No.	Part No.	Description	No. Off
		ALTERNATOR —Continued	
		HARDWARE , securing voltage regulator to frame	
DY19	520308	Screw , earthing, red	1
DY20	520299	Washer , plain	1
DY21	520303	Brush Box Assembly	1
		HARDWARE , securing brush box assembly and voltage regulator to frame	
DY22	520306	Screw	1
DY23	520299	Washer , plain	1
DY24	520300	Washer , fibre, insulating	1
DY25		Sleeve , plastic, on screw	NSS
DY26	520304	Brush Assembly	2
DY27	520305	Spring , brush	2
DY28	520334	Diode Trio Assembly , fitted to alternator with Delco part no. 7982652	1
	520301	Diode Trio Assembly , fitted to alternator with Delco part no. 7982648	1
		HARDWARE , securing diode trio, brush box, and voltage regulator to frame	1
DY29	520306	Screw	1
DY30	520299	Washer , plain	1
DY31	520300	Washer , fibre, insulating	1
DY32		Sleeve , plastic, on screw	NSS
		HARDWARE , securing diode trio and stator terminals to studs on rectifier bridge	
DY33	520299	Washer , plain	3
DY34	520302	Nut , hex	3
DY35	520291	Stator Assembly	1
	520292	Terminal , stator	3
		PULLEY AND FAN , fitted to alternator with Delco part no. 7982652	1
DY36	156364	Pulley , alternator drive, 1/2-inch belt groove	1
DY37	519667	Fan , alternator	1
		PULLEY AND FAN , fitted to alternator with Delco part no. 7982648	1
	217464	Pulley , alternator drive, 3/8-inch belt groove	1
	519667	Fan , alternator	1

PLATE DZ

LUCAS MODEL 16ACR ALTERNATORS

TRIUMPH TR6



LUCAS MODEL 16ACR ALTERNATORS

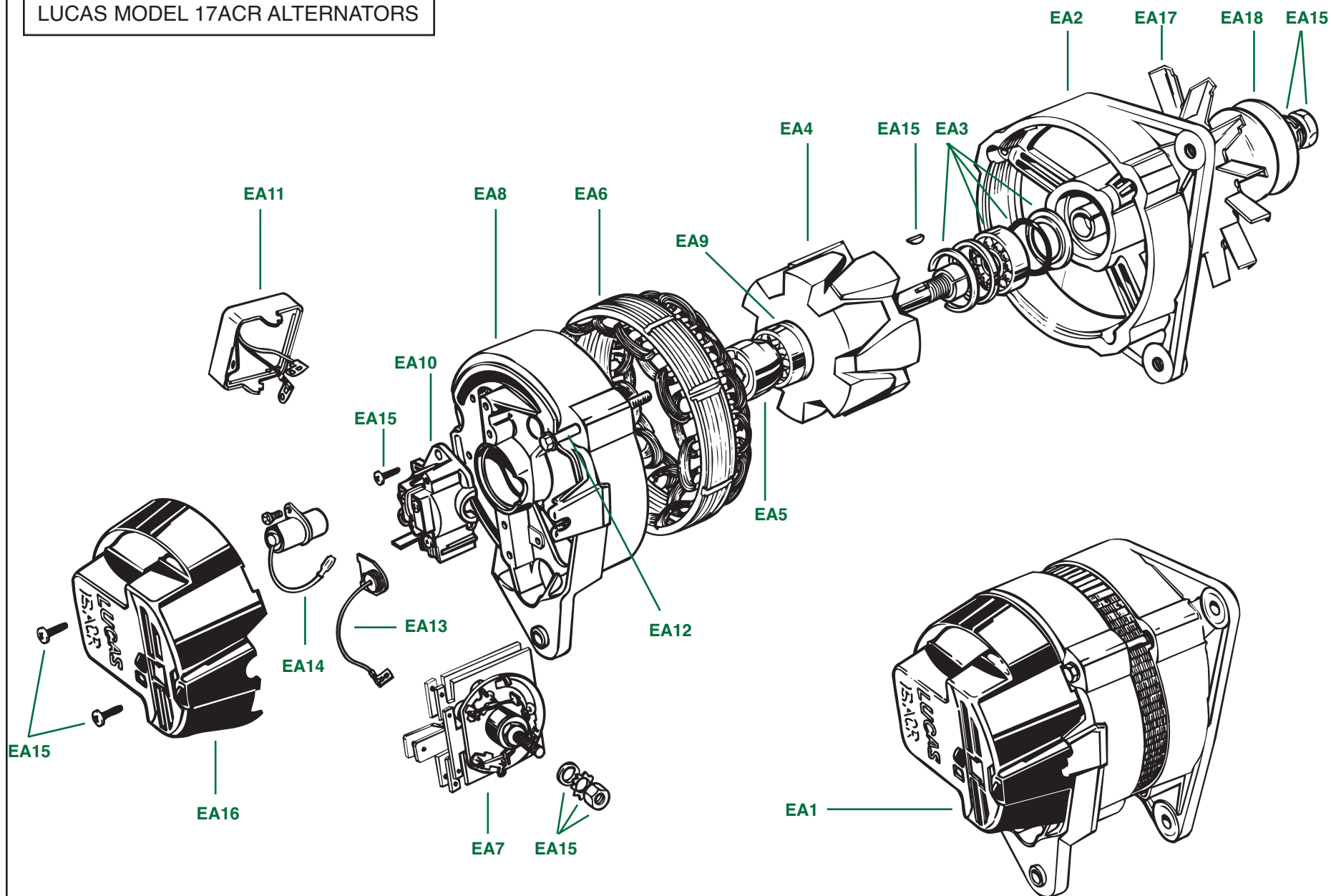
Plate No.	Part No.	Description	No. Off
		<p>Please Note: Lucas Model 16ACR alternators were fitted to non-U.S. cars from comm. no. CR1 apparently up through the end of production. The alternators which were fitted officially are listed below, but individual cars may have been fitted with other 18ACR alternators. If it is possible, you should start by determining the original Lucas part number of an alternator needing repair. The Lucas part number is found on an aluminium tag fixed to the body of the alternator next to the plastic rear cover, but these tags are often removed from rebuilt alternators. If the alternator in hand has a different part number from those listed below or if you are unable to determine the part number, call The Roadster Factory for assistance. The best course of action for most individual enthusiasts is to fit a rebuilt alternator of the correct specification for the model and year of the car.</p>	
DZ1	219267	ALTERNATOR , Lucas model 16ACR, Lucas part nos. 23747A, 23750A, and 23795A; negative ground, 12 volts, 34 amps, fitted to non-U.S. models after comm. no. CR1	1

Plate No.	Part No.	Description	No. Off
	219267R	ALTERNATOR , factory rebuilt unit, for the application described in the previous listing	1
DZ2	LU54200544	FRAME , drive end	1
DZ3	LU54219310	Bearing Kit , drive end	1
DZ4	LU54201945	ROTOR	1
DZ5	LU54217372	Slip-Ring	1
DZ6	LU54218360	Stator	1
DZ7	LU83295	Rectifier	1
DZ8	LU54200781	Frame , slip-ring end	1
DZ9	LU54219312	Bearing Kit , slip-ring end	1
DZ10	LU54200349	BRUSH BOX ASSEMBLY	1
	LU54219368	Brushes Set	1
DZ11	LU37595	Regulator , voltage	1
DZ12	LU54113722	Through Bolt Kit	1
DZ13	LU54048364	Surge Protection Device	1
DZ14	LU54200297	Suppression Capacitor , fitted to alternator with Lucas part no. 23747A	1
DZ15	LU54218702	Sundry Parts Kit	1
DZ16	LU54200720	Cover , rear, plastic	1
DZ17	147990	Fan , alternator	1
DZ18	154334	Pulley, drive , 3/8-inch belt groove	1

PLATE EA

LUCAS MODEL 17ACR ALTERNATORS

TRIUMPH TR6



LUCAS MODEL 17ACR ALTERNATORS

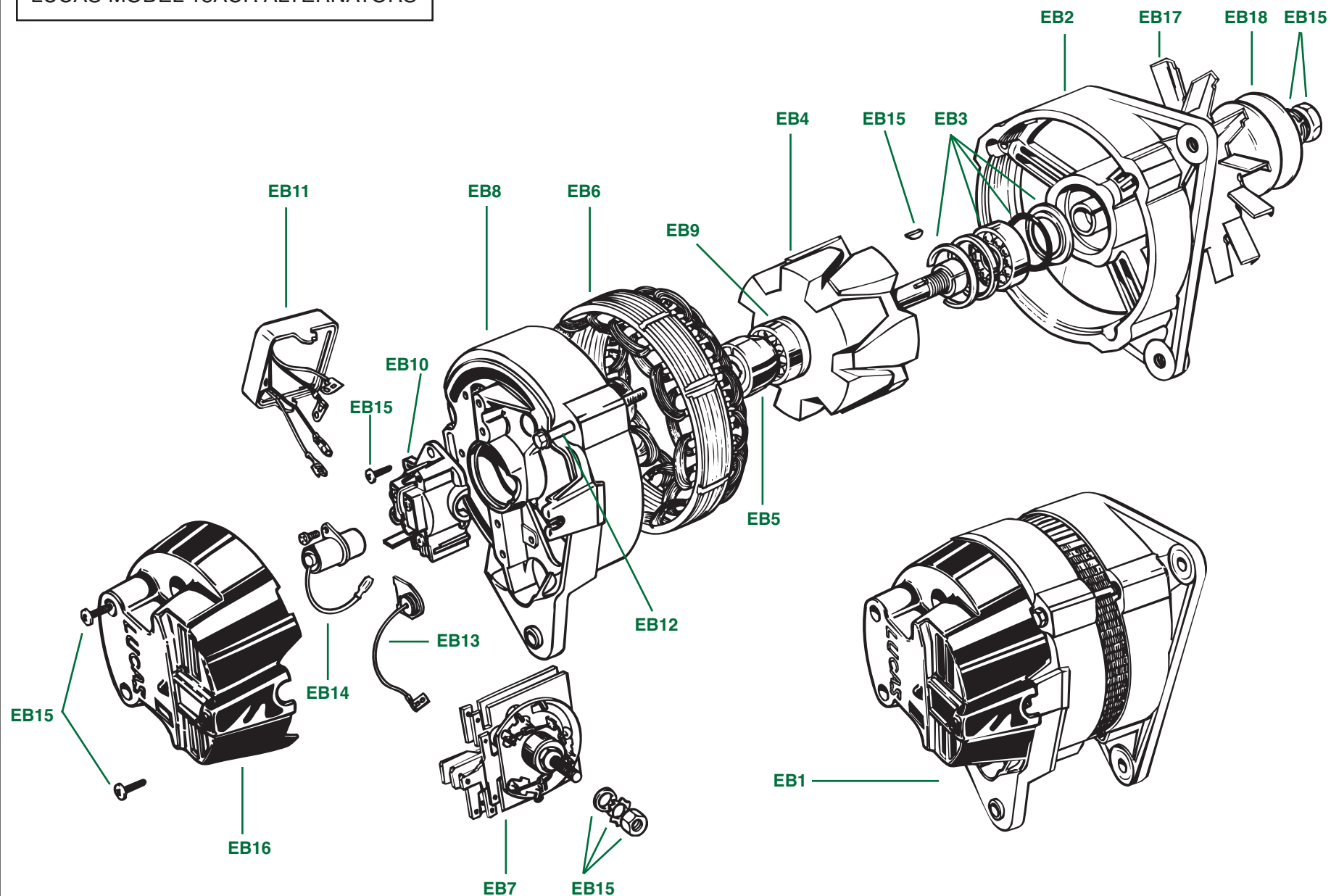
Plate No.	Part No.	Description	No. Off
<p>Please Note: Lucas Model 17ACR alternators were fitted to U.S. TR6 models during the 1971 and 1972 model years, from comm. no. CC65347 up to CF1. The alternators which were fitted officially are listed below, but individual cars may have been fitted with other 17ACR alternators, either at the factory or as later replacements. If it is possible, you should start with the Lucas part number of an alternator needing repair. The Lucas part number is found on an aluminium tag fixed to the body of the alternator next to the plastic rear cover, but these tags are often removed from rebuilt alternators. If the alternator in hand has a different part number from those listed below or if you are unable to determine the part number, call The Roadster Factory for assistance. The best course of action for most individual enthusiasts is to fit a rebuilt alternator of the correct specification for the model and year of the car.</p>			
EA1	217988	ALTERNATOR , Lucas model 17ACR, Lucas part nos. 23635A, 23635B, 23642A, 23642B, 23745A, 23748; negative ground, 12 volts, 36 amps, fitted to U.S. models from comm. no. CC65347 up to CF1	1
	217988R	ALTERNATOR , factory rebuilt unit, for the application described in the previous listing	1
EA2	LU54200270	FRAME , drive end, fitted to alternators with Lucas part no. 23635A and 23635B	1
	LU54219542	FRAME , drive end, fitted to alternators with Lucas part no. 23642A	1
	LU54200544	FRAME , drive end, fitted to alternators with Lucas part nos. 23642B, 23745A, and 23748	1
EA3	LU54219310	Bearing Kit , drive end	1
EA4	LU54219924	ROTOR , fitted to alternators with Lucas part nos. 23635A, 23635B, and 23745A	1
	LU54202067	ROTOR , fitted to alternators with Lucas part nos. 23642A, 23642B, and 23748	1
EA5	LU54217372	Slip-Ring	1
EA6	LU54218305	Stator , fitted to alternators with Lucas part nos. 23635A, 23635B, 23745A, and 23748	1
	LU54201050	Stator , fitted to alternators with Lucas part nos. 23642A and 23642B	1
EA7	LU83192	Rectifier , fitted to alternators with Lucas part nos. 23635A, 23635B, 23642A and 23642B	1
	LU83295	Rectifier , fitted to alternators with Lucas part nos. 23745A and 23748	1
EA8	LU54218657	FRAME , slip-ring end, fitted to alternators with Lucas part nos. 23635A, 23635B, and 23642A	1
	LU54200781	FRAME , slip-ring end, fitted to alternators with Lucas part nos. 23642B, 23745A, and 23748	1
EA9	LU54219312	Bearing Kit, slip-ring end	1

Plate No.	Part No.	Description	No. Off
ALTERNATOR—Continued			
EA10	LU54200349	BRUSH BOX ASSEMBLY	1
	LU54219368	Brushes Set	1
EA11	LU37565	Regulator , voltage, fitted to alternators with Lucas part nos. 23635A, 23635B, 23642A, and 23642B	1
	LU37595	Regulator , voltage, fitted to alternators with Lucas part nos. 23745A and 23748	1
EA12	LU54113722	Through Bolt Kit	1
EA13	LU60210096	Surge Protection Device , should be fitted to alternators with Lucas part nos. 23635A and 23635B at time of overhaul, although not originally fitted	1
	LU54048364	Surge Protection Device , fitted to alternators with Lucas part nos. 23642A and 23642B	1
	LU54486144	Surge Protection Device , fitted to alternators with Lucas part nos. 23745A and 23748	1
EA14	LU54200297	Suppression Capacitor , fitted only to alternator with Lucas part no. 23748; no suppression capacitor fitted to other alternators listed in this section	1
EA15	LU54218702	Sundry Parts Kit	1
EA16	LU54219322	Cover , rear, plastic, fitted to alternators with Lucas part nos. 23635A, 23635B, 23642A, and 23642B	1
	LU54200720	Cover , rear, plastic, fitted to alternators with Lucas part no. 23745A	1
	LU54200689	Cover , rear, plastic, fitted to alternators with Lucas part no. 23748	1
EA17	147990	Fan , alternator	1
EA18	155948	Pulley, drive , 1/2-inch belt groove	1

PLATE EB

LUCAS MODEL 18ACR ALTERNATORS

TRIUMPH TR6



LUCAS MODEL 18ACR ALTERNATORS

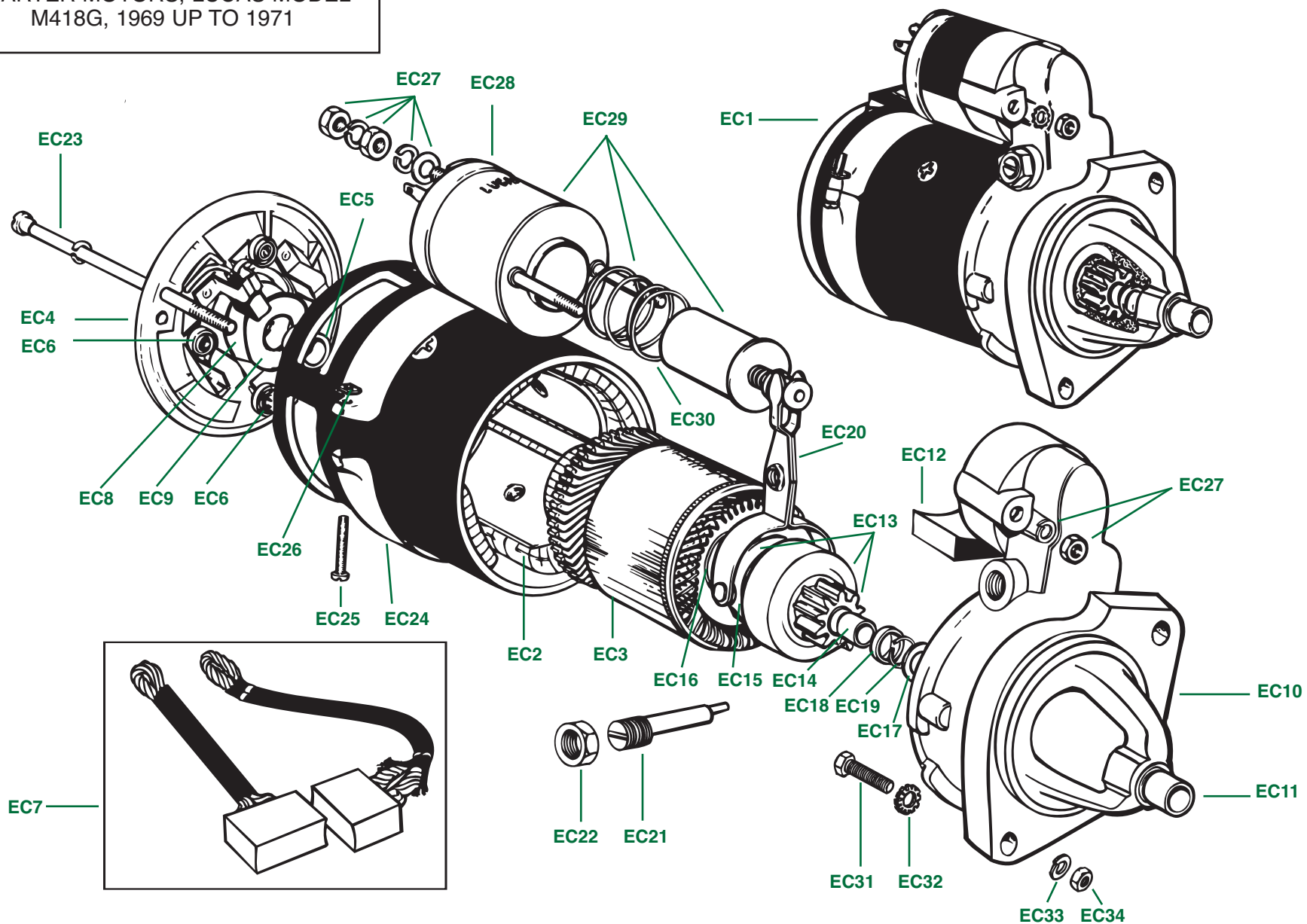
Plate No.	Part No.	Description	No. Off
<p>Please Note: Lucas Model 18ACR alternators were fitted to U.S. TR6 models after comm. no. CF1. The alternators which were fitted officially are listed below, but individual cars may have been fitted with other 18ACR alternators. If it is possible, you should start by determining the original Lucas part number of an alternator needing repair. The Lucas part number is found on an aluminium tag fixed to the body of the alternator next to the plastic rear cover, but these tags are often removed from rebuilt alternators. If the alternator in hand has a different part number from those listed below or if you are unable to determine the part number, call The Roadster Factory for assistance. The best course of action for most individual enthusiasts is to fit a rebuilt alternator of the correct specification for the model and year of the car.</p>			
EB1	218742	ALTERNATOR , Lucas model 18ACR, Lucas part nos. 23739A or 23740A; negative ground, 12 volts, 45 amps, fitted to U.S. models from comm. no. CF1 up to CF25000	1
	218742R	ALTERNATOR , factory rebuilt unit, for the application described in the previous listing	1
	TKC2757	ALTERNATOR , Lucas model 18ACR, Lucas part no. 23860; negative ground, 12 volts, 45 amps, fitted to U.S. models after comm. no. CF25000	1
	TKC2757R	ALTERNATOR , factory rebuilt unit, for the application described in the previous listing	1
EB2	LU54200544	FRAME , drive end, fitted to alternators with Lucas part nos. 23739A and 23740A	1
	LU54200543	FRAME , drive end, fitted to alternator with Lucas part no. 23860	1
EB3	LU54219310	Bearing Kit , drive end	1
EB4	LU54202067	ROTOR , fitted to alternator with Lucas part no. 23739A	1
	LU54200042	ROTOR , fitted to alternator with Lucas part no. 23740A	1
	LU54202268	ROTOR , fitted to alternator with Lucas part no. 23860	1
EB5	LU54217372	Slip-Ring	1
EB6	LU54219530	Stator	1
EB7	LU83166	Rectifier	1
EB8	LU54200781	FRAME , slip-ring end, fitted to alternators with Lucas part nos. 23739A and 23740A	1
	LU54200780	FRAME , slip-ring end, fitted to alternators with Lucas part no. 23860	1
EB9	LU54219312	Bearing Kit , slip-ring end	1

Plate No.	Part No.	Description	No. Off
ALTERNATOR—Continued			
EB10	LU54200349	BRUSH BOX ASSEMBLY	1
	LU54219368	Brushes Set	1
EB11	LU37582	Regulator , voltage	1
EB12	LU54113733	Bolt , through frames	3
EB13	LU54486144	Surge Protection Device	1
EB14	LU54200297	Suppression Capacitor	1
EB15	LU54218702	Sundry Parts Kit	1
EB16	LU54200720	Cover , rear, plastic, fitted to alternators with Lucas part nos. 23739A and 23860	1
	LU54201155	Cover , rear, plastic, fitted to alternator with Lucas part no. 23740A	1
EB17	156891	Fan , alternator	1
EB18	155948	Pulley, drive , 1/2-inch belt groove	1

PLATE EC

STARTER MOTORS, LUCAS MODEL
M418G, 1969 UP TO 1971

TRIUMPH TR6



STARTER MOTORS, LUCAS MODEL M418G, 1969 UP TO 1971

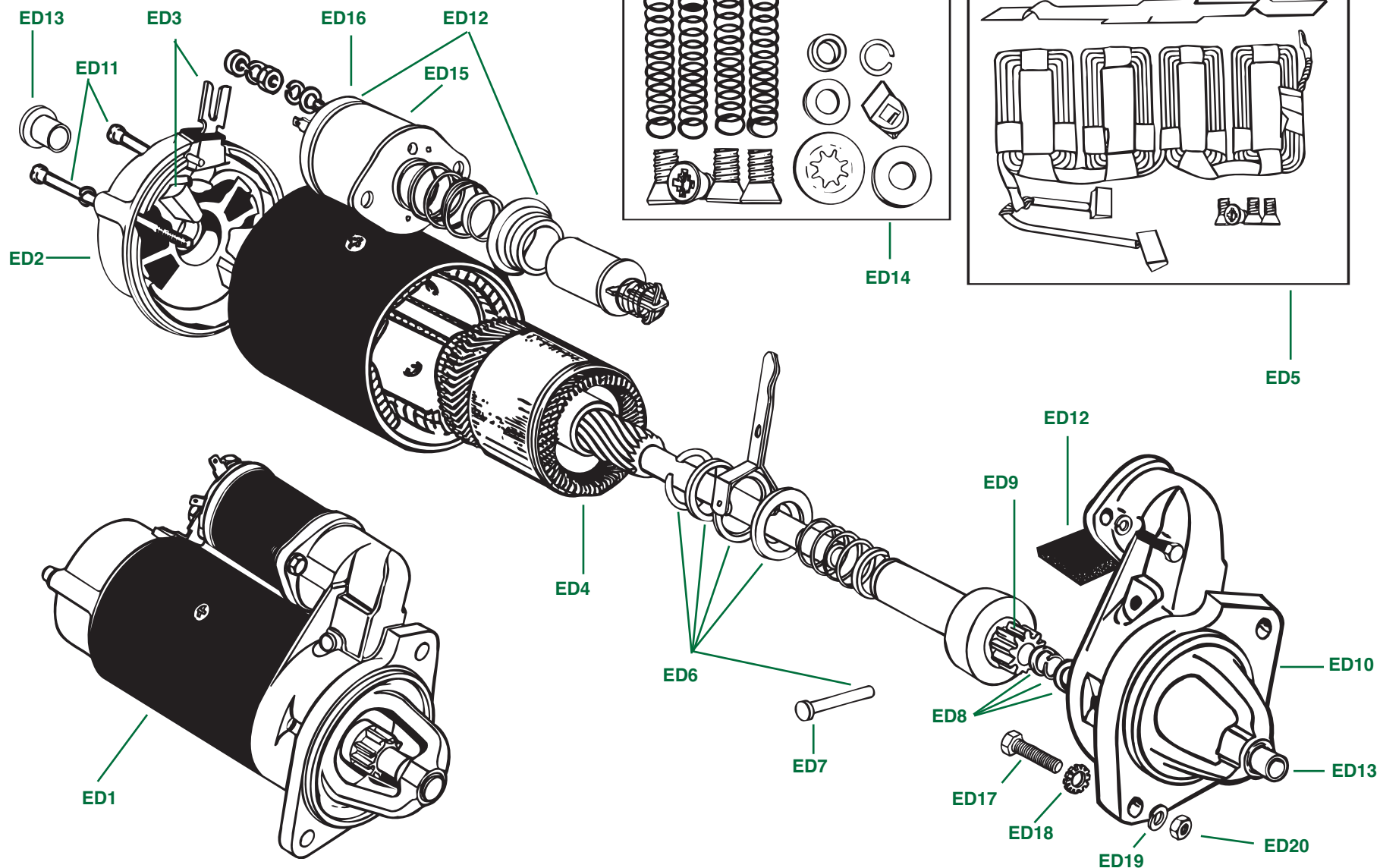
Plate No.	Part No.	Description	No. Off
EC1	214914	STARTER MOTOR , Lucas Model M418G; Lucas part nos. 25626A and 25626B; 12 volts, clockwise rotation; fitted up to comm. nos. CC63895 and CP53637	1
	214914R	STARTER MOTOR , factory rebuilt unit, for the application described in the previous listing	1
		Please Note: There is some indication in the Lucas records that Model 35G-1 starter motors with remote solenoids were fitted to some TR6's in early 1969. The Triumph records indicate that this plan was cancelled prior to production. If a car is encountered with a Model 35G-1 starter motor and remote solenoid, these details are fully covered in our TR250 parts catalogue, or you may ask a salesperson for assistance.	
EC2	LU54240709	Field Coil Set	1
EC3	LU54240322	Armature	1
		COMMUTATOR END DETAILS	
EC4	LU54240300	BRACKET ASSEMBLY , commutator end	1
EC5	LU251477	Bush , bearing, commutator end	1
EC6	LU54257221	Spring Set , brush tension	1
EC7	LU255659	Brushes Set	1
EC8	LU54140202	Washer , thrust, steel, commutator end	1
EC9	LU54140203	Washer , fabric, steel, commutator end	1
		DRIVE END DETAILS	
EC10	LU54242823	Bracket , drive end	1
EC11	LU54245343	Bush , bearing, drive end	1
EC12	LU54244559	Grommet , bracket fixing	1
EC13	LU54240327	STARTER DRIVE PINION ASSEMBLY	1
EC14	LU54252075	Bush , bearing, pinion	1
EC15	LU54259624	Plate , operating lever	1
EC16	LU291013	Ring , retaining plate	1
EC17	LU54250549	Washer , thrust, drive end	1
	LU54245339	DRIVE RETENTION KIT	1
EC18	517469	Collar , thrust	1
EC19	517470	Jump Ring	1
		ENGAGING LEVER DETAILS	
EC20	LU54240960	Lever , pinion engaging	1
EC21	LU54240485	Bolt , pivot, lever	1
EC22	LU272549	Nut , securing bolt	1
		MISCELLANEOUS DETAILS	
EC23	LU256009	Bolt , through fixing	2
EC24	LU54240319	COVER BAND ASSEMBLY	1
EC25	LU54257851	Screw , securing cover band	1
EC26	LU169160	Nut , securing cover band	1
EC27	LU271731	Sundry Parts Kit	1

Plate No.	Part No.	Description	No. Off
		STARTER MOTOR —Continued	
EC28	LU76897	SOLENOID	1
EC29	LU60600678	END CAP AND CONTACTS KIT	1
EC30	LU54642810	Spring , return, plunger	1
	RFK631	HARDWARE KIT , securing starter motor to rear engine plate and gearbox flange	1
EC31	HB915	Bolt	2
EC32	WE609	Washer , shakeproof	2
EC33	WL209	Washer , lock	2
EC34	HN2009	Nut , hex	2

PLATE ED

STARTER MOTORS, LUCAS MODEL
2M100, 1971 UP TO 1976

TRIUMPH TR6



STARTER MOTORS, LUCAS MODEL 2M100, 1971 UP TO 1976

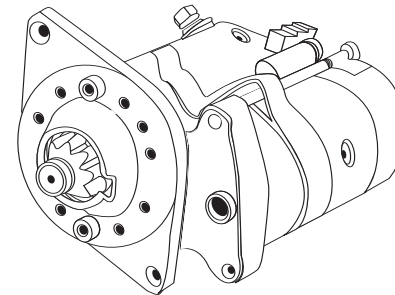
Plate No.	Part No.	Description	No. Off
ED1	218053	STARTER MOTOR , Lucas Model 2M100; Lucas part nos. 25647A, 25647E, 25647F, 25647J; 12 volts, clockwise rotation; fitted from comm. nos. CC63895/CP53637 up to CF53041/CR6701	1
	218053R	STARTER MOTOR , factory rebuilt unit, for the application described in the previous listing	1
	TKC3010	STARTER MOTOR , Lucas Model 2M100; Lucas part no. 25714A; 12 volts, clockwise rotation; fitted after comm. no. CF53041	1
	TKC3010R	STARTER MOTOR , factory rebuilt unit, for the application described in the previous listing	1
ED2	LU54245645	Bracket Kit , commutator end, comprising bracket, brushes, and connector assembly	1
ED3	LU54246258	Brushes Kit , comprising brushes and connector	1
ED4	LU54245090	Armature Kit	1
ED5	LU54246977	Field Coil Kit , comprising field coil assembly, brushes, yoke insulator, and pole screws	1
ED6	LU60600031	ENGAGING LEVER KIT , comprising lever and plate assembly, pivot pin, and ring	1
ED7	LU54260461	Pin , pivot	1
ED8	LU54245340	Lever Retention Kit , comprising lock ring, thrust pad, bearing collar, and spacing spring	1
ED9	LU54249032	Drive Kit , fitted to starter motors with Lucas part nos. 25647B, 25647E, 25647F, and 25647J	1
	LU54262658	Drive Kit , fitted to starter motors with Lucas part no. 25714A	1
ED10	LU60600233	Bracket Kit , drive end, comprising bracket, dowel, and bush, fitted to starter motors with Lucas part nos. 25647B and 25647E	1
	LU54249562	Bracket Kit , drive end, comprising bracket, dowel, and bush, fitted to starter motors with Lucas part nos. 25647F, 25647J, and 25714A	1
ED11	LU54246979	Through Bolt Kit	1
ED12	LU54246978	Sealing Kit , comprising end cap, bellows, brass cap, and grommet for driving-end bracket	1
ED13	LU54245343	Bush Kit , comprising bushes for driving-end bracket and for commutator-end bracket	1
ED14	LU54246438	Sundry Parts Kit	1
ED15	LU76875	SOLENOID , fitted to starter motors with Lucas part nos. 25647B, 25647E, 25647F, and 25647J	1
ED16	LU54644303	End Cap and Contacts Kit , solenoid, comprising end cap assembly, spindle, and contacts plate, fitted to starter motors with Lucas part nos. 25647B, 25647E, 25647F, and 25647J	1
	LU76879	SOLENOID , fitted to starter motors with Lucas part no. 25714A	1
	LU54644302	End Cap and Contacts Kit , solenoid, comprising end cap assembly, spindle, and contacts plate, fitted to starter motors with Lucas part no. 25714A	1

Plate No.	Part No.	Description	No. Off
	RFK631	HARDWARE KIT , securing starter motor to rear engine plate and gearbox flange	1
ED17	HB915	Bolt	2
ED18	WE609	Washer , shakeproof	2
ED19	WL209	Washer , lock	2
ED20	HN2009	Nut , hex	

Modern Gear Reduction Starter Replacements

Modern gear reduction starters have been very popular with British car enthusiasts.

As original units lose their effectiveness with age and successive rebuilding, they gave less cranking power, and brand new Lucas starters haven't been available in twenty years. Gear reduction starters take advantage of electric motor developments made over the past thirty years, and they have more power to crank your TR6 engine. The motors listed here have been adapted specifically for the TR6, and they will bolt right onto your engine and connect with original wiring.

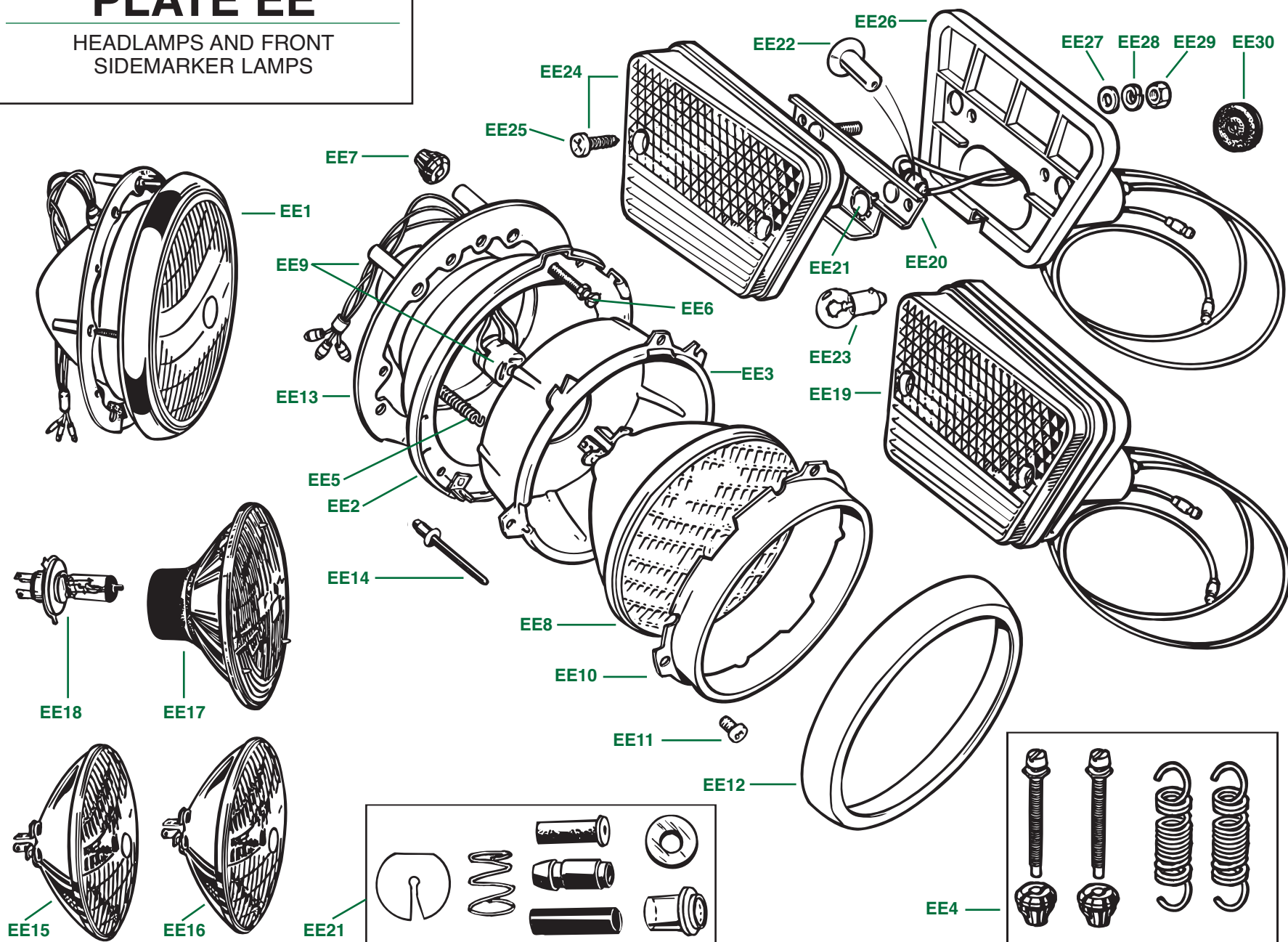


Part No.	Description	No. Off
GRS104	Starter Motor ; modern gear reduction type; fits all TR6 models	1

PLATE EE

HEADLAMPS AND FRONT
SIDEMARKER LAMPS

TRIUMPH TR6



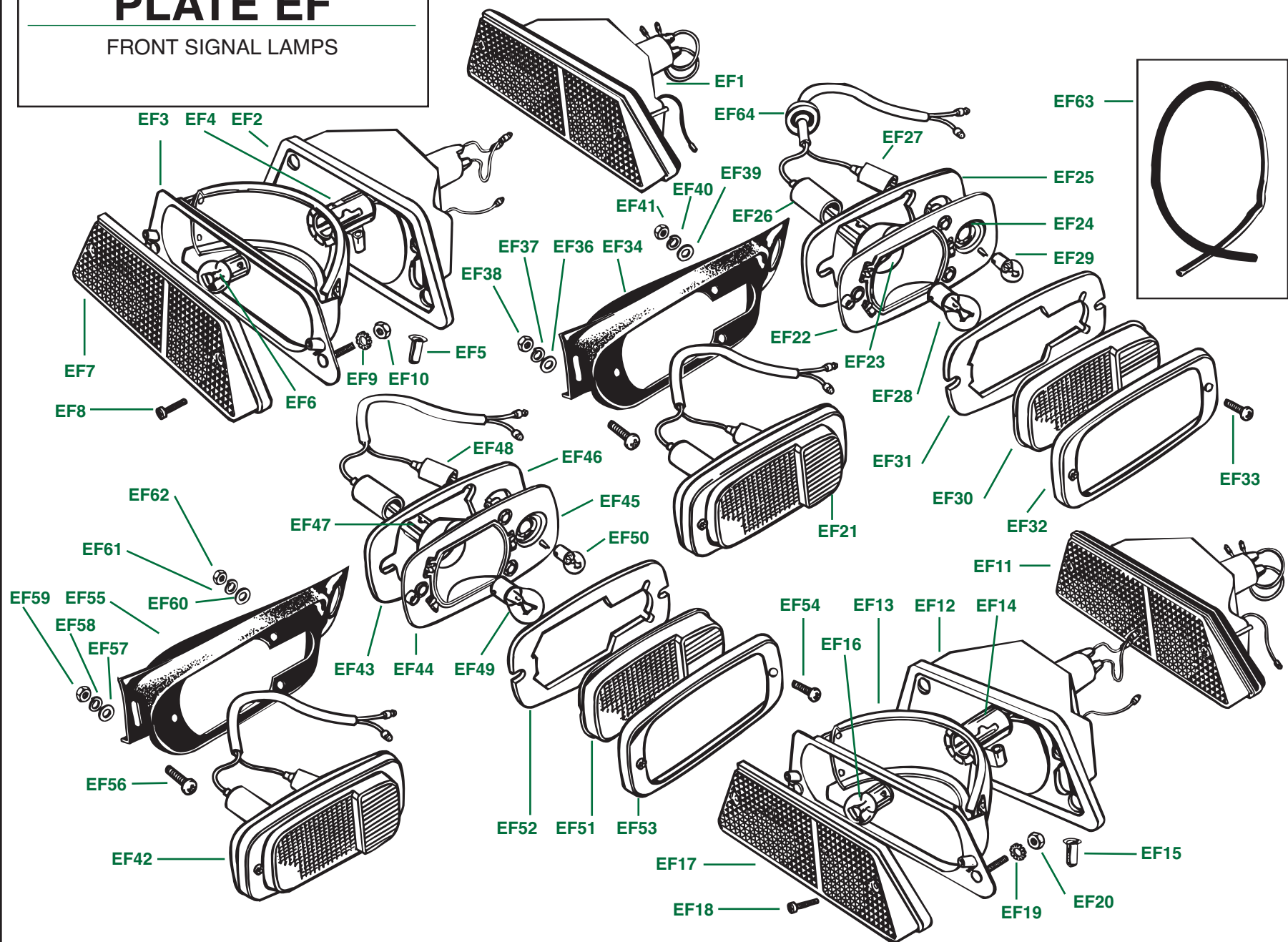
HEADLAMPS AND FRONT SIDEMARKER LAMPS

Plate No.	Part No.	Description	No. Off
		HEADLAMPS, U.S.A. models only	
EE1	514579	HEADLAMP ASSEMBLY	2
EE2	SLP146	Body , headlamp, steel	2
	SLP147	Body , headlamp, plastic replacement	2
EE3	513265	Rim , seating, behind light unit	2
EE4	LU60600427	TRIMMER SCREW KIT ; adjusting aim of headlamps	2
EE5	513266	Spring , securing seating rim	2
EE6	513267	Screw , trimmer	4
EE7	LU54525681	Nut , plastic, securing trimmer screws	4
EE8		Light Unit —See EE15-EE21 Below	
EE9	501478	Connector and Cable Assembly	2
EE10	512987	Rim , inner, chromed, retaining light unit	2
EE11	507086	Screw , securing inner rim	6
EE12	119072	Rim , outer, chromed	2
EE13	512222	Gasket , rubber, between headlamp and body front fender flange	2
		HEADLAMP LIGHT UNITS	
EE15		Headlamp Unit , sealed beam, stock type, Lucas brand	2
EE16		Headlamp Unit , sealed beam, stock type, Wagner brand	2
	RFK1480	HEADLAMP KIT ; includes one pair of street legal halogen lamps with separate bulbs	1
EE17	GLB701	Headlamp , halogen, round face, DOT approved lamp	2
EE18	HBL55/60	Bulb , for halogen lamps, 55/60 watts	2
EE19	RFK1336	Headlamp Kit ; includes one pair of off-road halogen headlamps; round face, similar in appearance to classic Cibie Z-beam lamps; comes with 55/60 watt bulbs	1
EE20	RFK1337	Headlamp Kit ; includes one pair of off-road halogen headlamps; flat face; comes with 55/60 watt bulbs	1
	RFK1488	Lucas H4 Halogen Lamp Kit , round-faced with “H4” on the glass; includes two lamps and two 55/60 bulbs	1
	RFK1489	Lucas European H4 Lamp Kit , round-faced with “Lucas European” on the glass; includes two lamps and two 55/60 bulbs	1
		BULBS FOR HALOGEN HEADLAMPS	
EE21	HLB55/60	Halogen Bulb , 55/60 watts	2
	HLB55/100	Halogen Bulb , 55/100 watts; that’s right, 100 watt high beam	2

Plate No.	Part No.	Description	No. Off
		FRONT SIDE MARKER LAMPS, U.S.A. models only	
EE22	150788	FRONT SIDEMARKER LAMP ASSEMBLY, L.H.	1
	150789	FRONT SIDEMARKER LAMP ASSEMBLY, R.H.	1
EE23	SLP145	LAMP BASE ASSEMBLY	2
EE24	506619	Bulbholder , interior	2
EE25	605953	Sleeve , terminal	2
EE26	501436	Bulb	2
EE27	518035	Lens , with correct reflectors for U.S., L.H.	1
	518033	Lens , with correct reflectors for U.S., R.H.	1
EE28	SLP144	Screw , securing lenses	4
EE29	518034	Lamp Body , rubber	2
		HARDWARE , securing front sidemarker lamps to front fenders	
EE30	WM55	Washer , plain	4
EE31	WL205	Washer , lock	4
EE32	HN2005	Nut , hex	4
EE33	600395	Grommet , rubber; holes in inner fenders for wiring leads for headlamps and front side marker lamps	2

PLATE EF

FRONT SIGNAL LAMPS



FRONT SIGNAL LAMPS

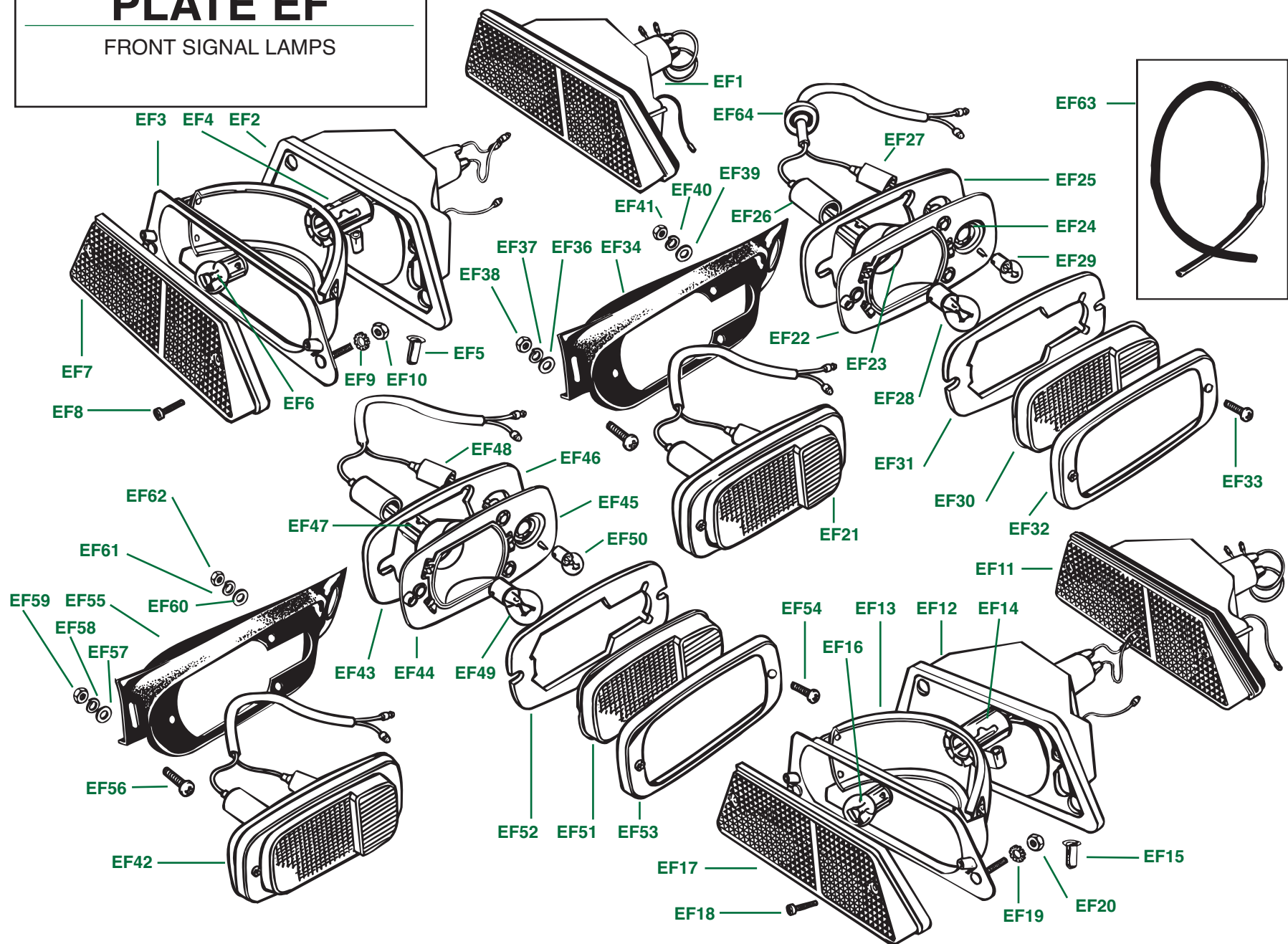
Plate No.	Part No.	Description	No. Off
		FRONT PARKING/SIGNAL LAMPS , U.S.A. models only, up to comm. no. CF1	1
EF1	215363	FRONT PARKING/SIGNAL LAMP ASSEMBLY , L.H.	1
EF2	517822	Body , rubber, L.H.	1
EF3		BASE , lamp, L.H.	NSS
EF4	508545	Bulbholder , interior	1
EF5	605953	Sleeve , terminal	1
EF6	GLB380	Bulb	1
EF7	517824	LENS ASSEMBLY , amber parking/amber signal, with chromed edge, L.H., with screws	1
EF8	517819	Screw , securing lens	2
	215362	FRONT PARKING/SIGNAL LAMP ASSEMBLY , R.H.	1
	517820	Body , rubber, R.H.	1
		BASE , lamp, R.H.	NSS
	508545	Bulbholder , interior	1
	605953	Sleeve , terminal	1
	GLB380	Bulb	1
	517823	LENS ASSEMBLY , amber parking/amber signal, with chromed edge, R.H., with screws	1
	517819	Screw , securing lens	2
		HARDWARE , securing front parking/signal lamps to front valance	
EF9	WN705	Washer , shakeproof	4
EF10	HN2005	Nut , hex	4
		FRONT PARKING/SIGNAL LAMPS , U.S.A. models only, from comm. no. CF1 up to CF27000	1
EF11	219122	FRONT PARKING/SIGNAL LAMP ASSEMBLY , L.H.	1
EF12	517822	Body , rubber, L.H.	1
EF13		BASE , lamp, L.H.	NSS
EF14	508545	Bulbholder , interior	1
EF15	605953	Sleeve , terminal	1
EF16	GLB380	Bulb	1
EF17	RTC291	LENS ASSEMBLY , amber parking/amber signal, without chromed edge, L.H., with screws	1
EF18	517819	Screw , securing lens	2
	219121	FRONT PARKING/SIGNAL LAMP ASSEMBLY , R.H.	1
	517820	Body , rubber, R.H.	1
		BASE , lamp, R.H.	NSS
	508545	Bulbholder , interior	1
	605953	Sleeve , terminal	1
	GLB380	Bulb	1
	RTC290	LENS ASSEMBLY , amber parking/amber signal, without chromed edge, R.H., with screws	1
	517819	Screw , securing lens	2

Plate No.	Part No.	Description	No. Off
		FRONT PARKING/SIGNAL LAMPS —Continued	
		HARDWARE , securing front parking/signal lamps to front valance	
EF19	WN705	Washer , shakeproof	4
EF20	HN2005	Nut , hex	4
		FRONT PARKING/SIGNAL LAMPS , U.S.A. models only, from comm. no. CF27000 up to CF50000	
EF21	RKC1530	FRONT PARKING/SIGNAL LAMP ASSEMBLY ; fits L.H. or R.H.	2
EF22		BASE , lamp	NSS
EF23	LU573832	Bulbholder , interior, signal lamp	2
EF24	LU553780	Bulbholder , interior, parking lamp	2
EF25	RTC1848	Gasket , lamp base	2
EF26	515061	Grommet , cable entry, signal lamp	2
EF27	515060	Grommet , cable entry, parking lamp	2
EF28	GLB382	Bulb , signal lamp	2
EF29	GLB989	Bulb , parking lamp	2
EF30	RTC1849	LENS , amber signal/clear parking, with gasket	2
EF31	SLP148	Gasket , between lens and lamp base	2
	SLP150	Divider , lens	2
EF32	RTC1847	RIM , lamp, with screws	2
EF33	SLP149	Screw , securing rims and lenses to lamps	4
EF34	RFK615	MOUNTING KIT , front parking/signal lamps to front bumper	1
	XKC1807	Plinth , mounting, L.H.	1
	XKC1808	Plinth , mounting, R.H.	1
		HARDWARE , securing mounting plinths to front bumper	
EF35	PX504	Screw , set	4
EF36	WP5	Washer , plain	4
EF37	WL205	Washer , lock	4
EF38	HN2005	Nut , hex	4
		HARDWARE , securing lamps to mounting plinths	
EF39	WP5	Washer , plain	6
EF40	WL205	Washer , lock	6
EF41	HN2005	Nut , hex	6

(Continued on next page.)

PLATE EF

FRONT SIGNAL LAMPS



FRONT SIGNAL LAMPS

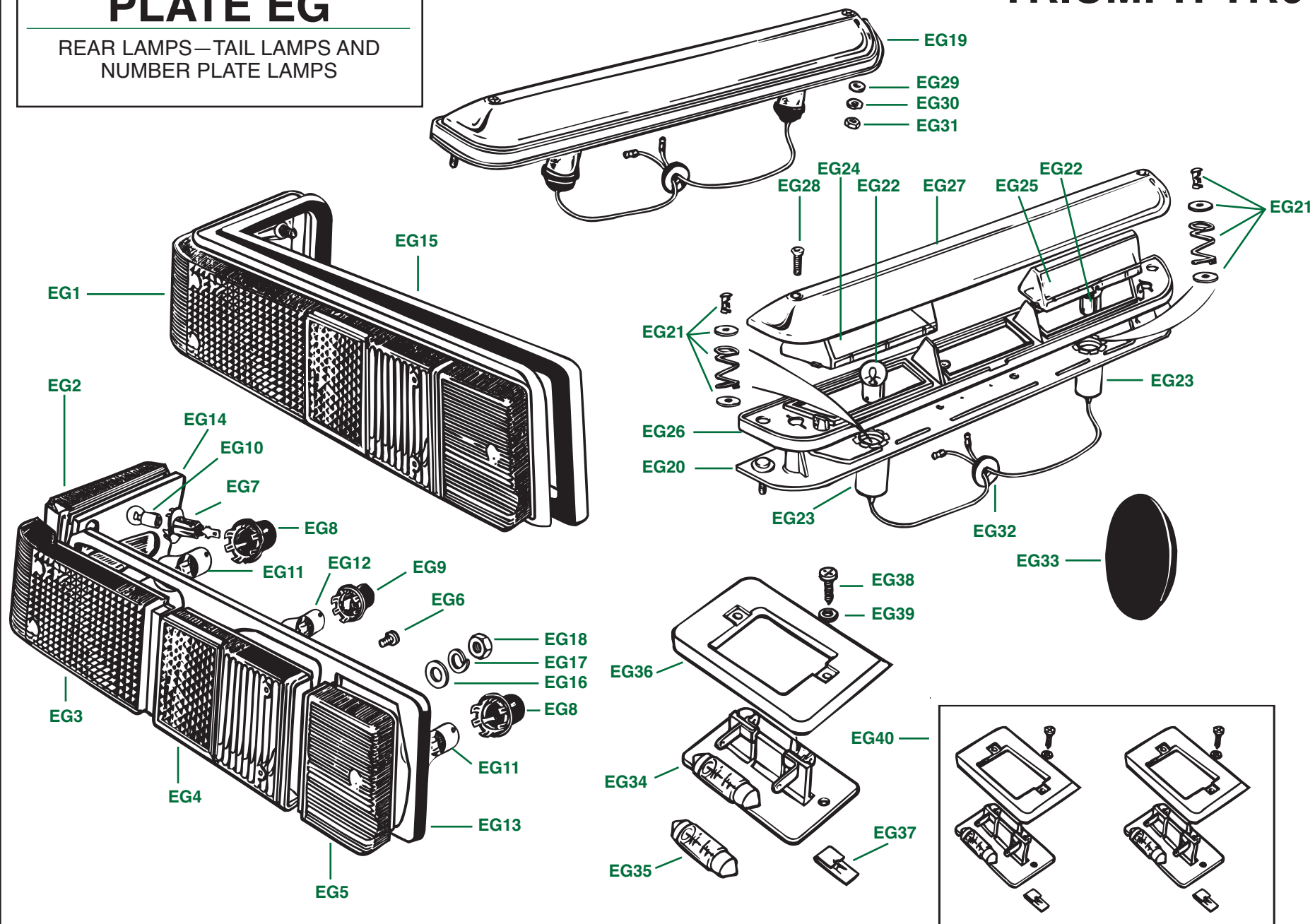
Plate No.	Part No.	Description	No. Off
FRONT SIGNAL LAMPS			
FRONT PARKING/SIGNAL LAMPS, U.S.A. models			
		only, after comm. no. CF50000	
EF42	RKC2924	FRONT PARKING/SIGNAL LAMP ASSEMBLY; fits L.H. or R.H.	2
EF43		BASE, lamp	NSS
EF44	LU573832	Bulbholder, interior, signal lamp	2
EF45	LU553780	Bulbholder, interior, parking lamp	2
EF46	RTC1848	Gasket, lamp base	2
EF47	515061	Grommet, cable entry, signal lamp	2
EF48	515060	Grommet, cable entry, parking lamp	2
EF49	GLB382	Bulb, signal lamp	2
EF50	GLB989	Bulb, parking lamp	2
EF51	AAU3394	LENS, amber signal/amber parking, with gasket	2
EF52	SLP148	Gasket, between lens and lamp base	2
	SLP150	Divider, lens	2
EF53	RTC1847	RIM, lamp, with screws	2
EF54	SLP149	Screw, securing rims and lenses to lamps	4
	RFK615	MOUNTING KIT, front parking/signal lamps	1
EF55	XKC1807	Plinth, mounting, L.H.	1
	XKC1808	Plinth, mounting, R.H.	1
		HARDWARE, securing mounting plinths to front bumper	
EF56	PX504	Screw, set	4
EF57	WP5	Washer, plain	4
EF58	WL205	Washer, lock	4
EF59	HN2005	Nut, hex	4
		HARDWARE, securing lamps to mounting plinths	
EF60	WP5	Washer, plain	6
EF61	WL205	Washer, lock	6
EF62	HN2005	Nut, hex	6
MISCELLANEOUS COMPONENTS			
EF63	LUCZB404/36	Tubing, black plastic, protecting lamp cables, thirty-six inch length	A/R
EF64	61917	Grommet, small, between lamp cables and holes in front valance panel, U.S.A. models only, after comm. no. CF27000	2

Plate No.	Part No.	Description	No. Off
-----------	----------	-------------	---------

PLATE EG

REAR LAMPS—TAIL LAMPS AND
NUMBER PLATE LAMPS

TRIUMPH TR6



REAR LAMPS—TAIL LAMPS AND NUMBER PLATE LAMPS

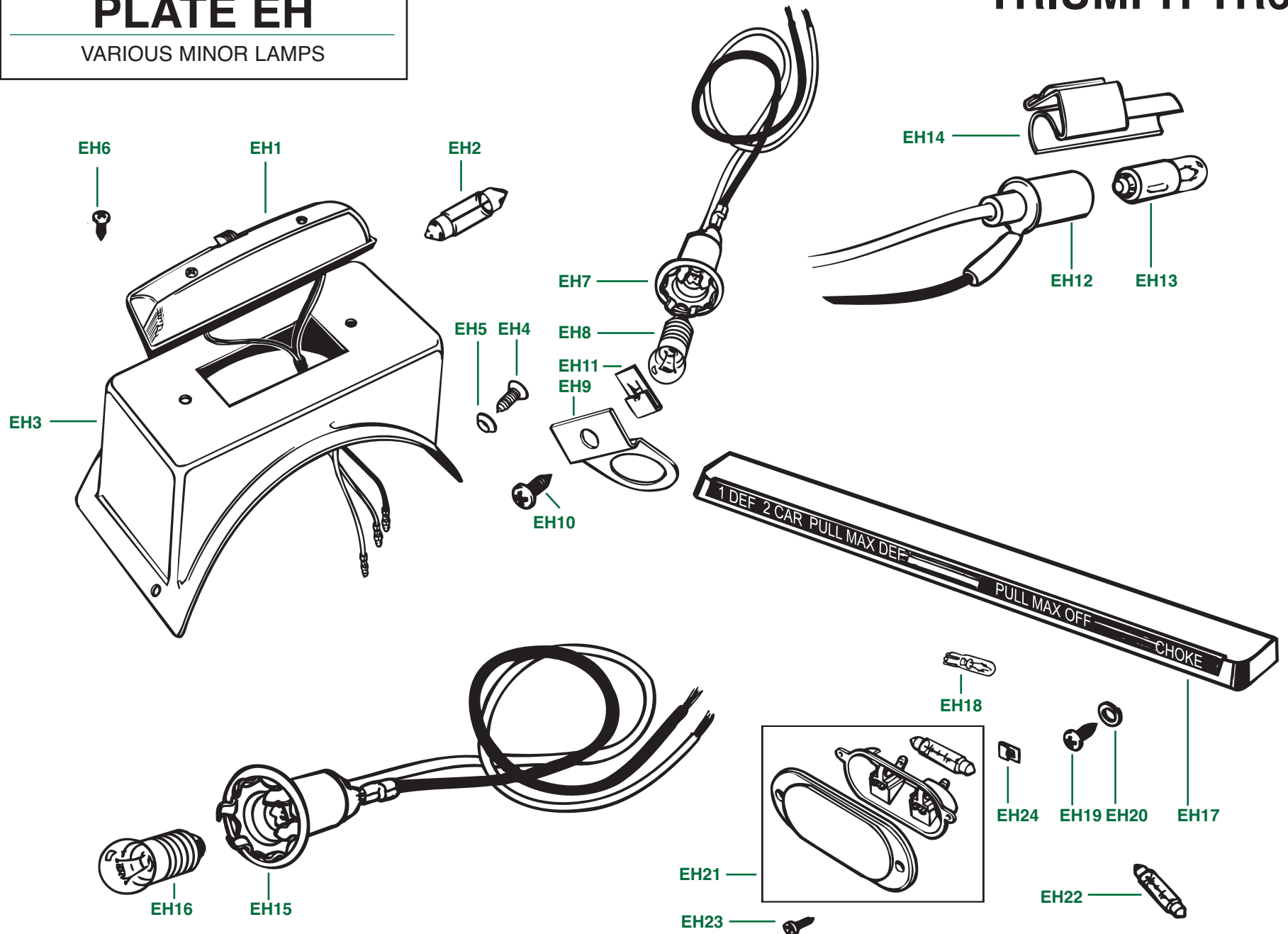
Plate No.	Part No.	Description	No. Off
EG1	LU54610	TAIL LAMP ASSEMBLY , L.H., U.S.A. models, fitted up to body no. 62020CC	1
	LU56204	TAIL LAMP ASSEMBLY , L.H., U.S.A. models, fitted from body no. 62020CC up to comm. no. CF1	1
	LU56393	TAIL LAMP ASSEMBLY , L.H., U.S.A. models, fitted from comm. no. CF1 up to CF12500	1
	LU56640	TAIL LAMP ASSEMBLY , L.H., U.S.A. models, fitted after comm. no. CF12500	1
	LU54609	TAIL LAMP ASSEMBLY , R.H., U.S.A. models, fitted up to body no. 62020CC	1
	LU56205	TAIL LAMP ASSEMBLY , R.H., U.S.A. models, fitted from body no. 62020CC up to comm. no. CF1	1
	LU56394	TAIL LAMP ASSEMBLY , R.H., U.S.A. models, fitted from comm. no. CF1 up to CF12500	1
	LU56639	TAIL LAMP ASSEMBLY , R.H., U.S.A. models, fitted after comm. no. CF12500	1
		LENSES	
EG2	LU54579601	LENS , sidemarker, red, L.H., with screws	1
	LU54579603	LENS , sidemarker, red, R.H., with screws	1
EG3	LU54579659	LENS , turn signal, amber, L.H., with screws	1
	LU54579660	LENS , turn signal, amber, R.H., with screws	1
EG4	LU54585937	LENS , stop/tail lamp, red, L.H., with screws	1
	LU54585936	LENS , stop/tail lamp, red, R.H., with screws	1
EG5	LU54585869	LENS , back up, white, L.H., with screws	1
	LU54585870	LENS , back up, white, R.H., with screws	1
EG6	518147	Screw , securing lenses to lamp base	20
		BULBHOLDERS	
EG7	LU54523326	Bulbholder , sidemarker lamps	2
EG8	LU54577578	Bulbholder , turn signal and back up lamps	4
EG9	LU54577579	Bulbholder , stop/tail lamps	2
		BULBS	
EG10	LULLB989	Bulb , sidemarker lamps	2
EG11	LULLB382	Bulb , turn signal and back up lamps	4
EG12	LULLB380	Bulb , stop/tail lamps	2
	RFK149	GASKET SET , tail lamps	1
EG13	LU54579676	Gasket , lenses to lamp, main portion	2
EG14	SLP161	Gasket , lenses to lamp, side portion	2
EG15	LU54583393	Gasket , lamp to body shell, L.H.	1
	LU54584607	Gasket , lamp to body shell, R.H.	1
	RFK622	HARDWARE KIT , securing tail lamps to body shell	1
EG16	WM55	Washer , plain	12
EG17	WL205	Washer , lock	12
EG18	HN2005	Nut , hex	12

Plate No.	Part No.	Description	No. Off
EG19	LU54632	LAMP ASSEMBLY , rear number plate illumination, fitted up to comm. no. CF1/CR1	1
EG20		Lamp Base Assembly	NSS
EG21	LU573832	Bulbholder , interior	2
EG22	LULLB207	Bulb	2
EG23	LU573825	Grommet , cable entry	2
EG24	LU54579264	Lens , L.H.	1
EG25	LU54579265	Lens , R.H.	1
EG26	LU54579268	Gasket , rubber	1
EG27	LU54579849	COVER , with screws	1
EG28	518148	Screw , securing cover	2
	RFK623	ATTACHMENTS KIT , for fitting rear number plate illumination lamp to car, fitted up to comm. no. CF1/CR1	1
EG29	WM55	Washer , plain	2
EG30	WL205	Washer , lock	2
EG31	HN2005	Nut , hex	2
EG32	61917	Grommet , wiring cable to body shell	1
EG33	600399	Plug , rubber, mounted in inner rear valance for access to wiring cable	1
EG34	LU56445	LAMP ASSEMBLY , rear number plate illumination, fitted after comm. no. CF1/CR1; this listing is the original-equipment Lucas lamp	2
	UKC5205	LAMP ASSEMBLY , rear number plate illumination, fitted after comm. no. CF1/CR1; this is an aftermarket replica of the original-equipment lamp	2
EG35	LULLB239	Bulb	2
EG36	632043	Plinth , mounting, number plate lamp, fitted after comm. no. CF1/CR1	2
	RFK571	HARDWARE KIT , securing number plate lamps and plinths to rear valance, fitted after comm. no. CF1	1
EG37	FJ2442/4	Nut , fix	4
EG38	519173	Screw , self-tapping	4
EG39	634570	Washer , plain	4
EG40	RFK453	LAMP KIT , rear number plate illumination, comprising two replica lamps with bulbs, two plinths, and hardware kit	1

PLATE EH

VARIOUS MINOR LAMPS

TRIUMPH TR6



VARIOUS MINOR LAMPS

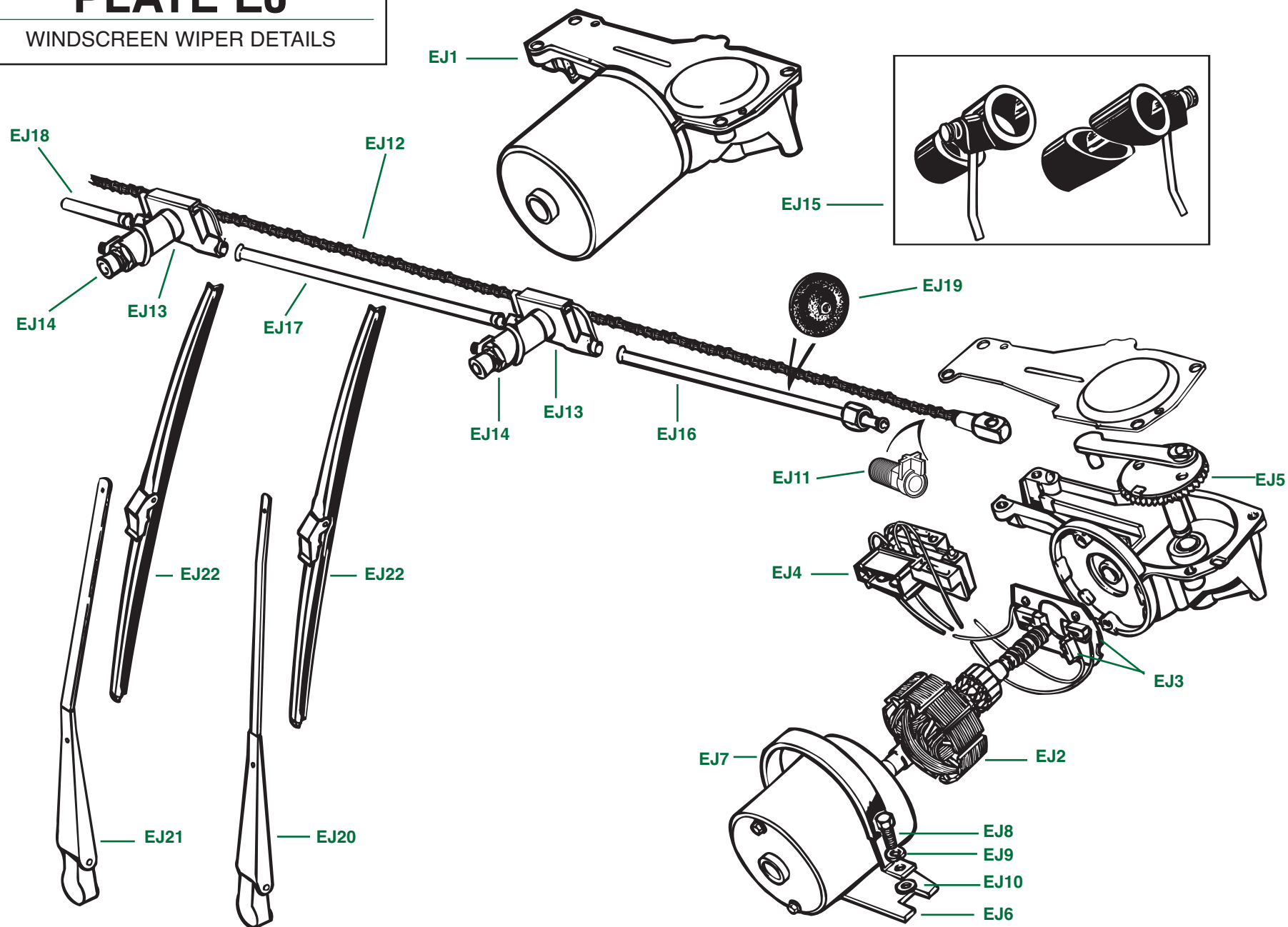
Plate No.	Part No.	Description	No. Off
INTERIOR LAMPS			
INTERIOR LAMP DETAILS , fitted up to comm. no. CF1 and CR1			
EH1	151273	INTERIOR LAMP ASSEMBLY	1
EH2	LULLB254	Bulb , interior lamp	1
PLINTHS , mounting interior lamps to propellor shaft tunnel			
EH3	717241	PLINTH ASSEMBLY , black	1
	717242	PLINTH ASSEMBLY , matador red	1
	717243	PLINTH ASSEMBLY , light tan	1
	717247	PLINTH ASSEMBLY , shadow blue	1
	725353	PLINTH ASSEMBLY , new tan	1
	635436	Plinth , untrimmed; without cloth covering	1
HARDWARE , securing plinth to propellor shaft tunnel			
EH4	502658	Screw , self-tapping, no. 6 X 3/4-inch	4
EH5	CD24152	Washer , cup, no. 6	4
EH6	YZ3304	Screw , self-tapping, securing lamp to plinth; no. 6 x 1/2-inch	2
KEY LAMP DETAILS , fitted to cars with locking steering columns, after comm. no. CC50000; U.S.A. and similar models			
EH7	LUCAB302	Bulbholder , this is part of wiring harness	1
EH8	LULLB987	Bulb	1
EH9	627318	Bracket , mounting bulbholder; secured to lower dash flange near to ignition lock	1
HARDWARE , securing bracket to metal dash flange			
EH10	YZ3304	Screw , self-tapping	1
EH11	FJ2443/8	Nut , fix	1
COURTESY LAMP DETAILS , fitted to all models after comm. no. CF1			
EH12	LU54364380	Bulbholder ; this is part of wiring harness	1
EH13	LULLB281	Bulb	1
EH14	UKC1063	Clip , securing bulbholder to lower dash flange under glove box	1

Plate No.	Part No.	Description	No. Off
GLOVE BOX LAMP DETAILS			
EH15	LUCAB302	Bulbholder ; this is part of wiring harness	1
EH16	LULLB987	Bulb , glove box lamp	1
HEATER CONTROLS IDENTIFICATION LAMP DETAILS			
EH17	219139	LAMP ASSEMBLY , heater controls identification	1
EH18	LULLB286	Bulb	1
HARDWARE , securing identification lamp assembly to dash support			
EH19	PX506	Screw , set	2
EH20	WQ305	Washer , lock	2
TRUNK LAMP DETAILS			
EH21	151353	LAMP KIT , trunk interior	1
EH22	LULLB256	Bulb	1
HARDWARE , mounting trunk interior lamp to trim board			
EH23	YX5363	Screw , self-tapping	2
EH24	FJ2462/8	Nut , spire	2

PLATE EJ

WINDSCREEN WIPER DETAILS

TRIUMPH TR6



WINDSCREEN WIPER DETAILS

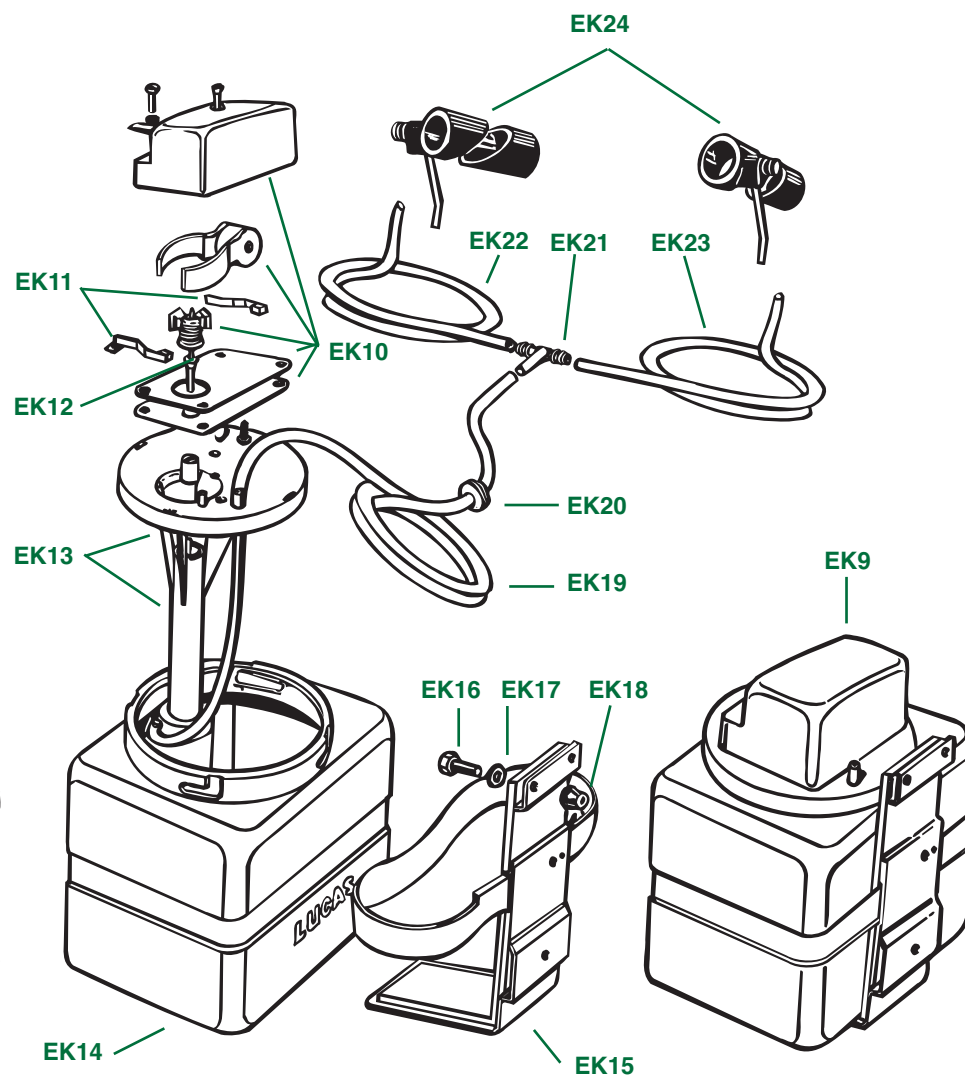
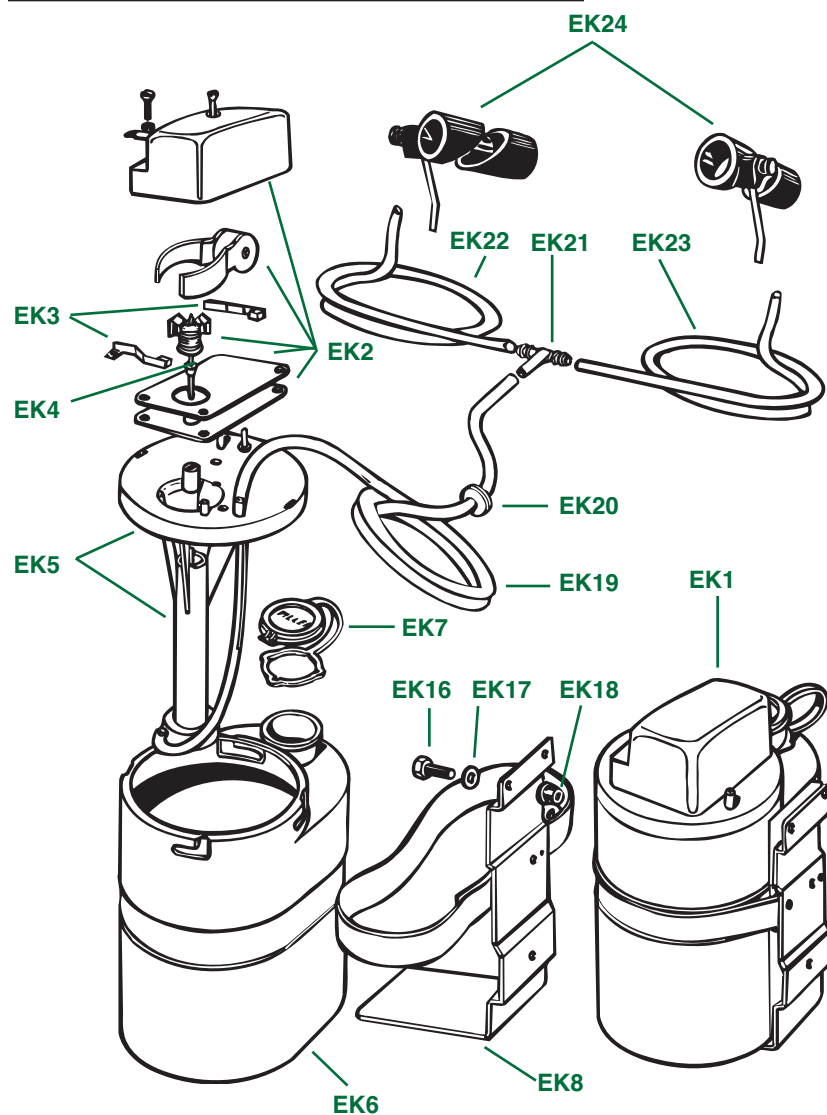
Plate No.	Part No.	Description	No. Off
WINDSCREEN WIPER MOTOR DETAILS			
Please Note: Before ordering parts, check the Lucas part number of the wiper motor in hand. It will be 75664A, 75664B, 75664D, or 75664F. The suffix letter is all-important.			
EJ1	LU75664	WIPER MOTOR AND GEARBOX UNIT; brand new unit, gear not included	1
	517621R	WIPER MOTOR AND GEARBOX UNIT; factory rebuilt unit	1
EJ2	LU54709161	Armature Assembly, wiper motor	1
EJ3	LU54701528	Brush Assembly, fitted to motors with Lucas part numbers 75664A and 75664B	1
	LU54704696	Brush Assembly, fitted to motors with Lucas part numbers 75664D and 75664F	1
EJ4	LU54701575	Switch, parking, fitted to motors with Lucas part numbers 75664A and 75664B	1
	LU54705657	Switch, parking, fitted to motors with Lucas part numbers 75664D and 75664F	1
EJ5	LU54702584	Gear Assembly, L.H.S.	1
	LU54702597	Gear Assembly, R.H.S.	1
	RFK598	MOUNTING KIT, windscreen wiper motor	1
EJ6	150844	Pad, rubber	1
EJ7	150846	STRAP AND SLEEVE ASSEMBLY	1
	150845	Sleeve, rubber	1
		HARDWARE, securing strap to bracket welded to bulkhead shelf	1
EJ8	HU704	Screw, set	2
EJ9	WL207	Washer, lock	2
EJ10	WP7	Washer, plain	2
WIPER DRIVE DETAILS			
EJ11	LU54701385	Ferrule	1
EJ12	LU743221	Rack (Cut to 28-13/32-inches.)	1
EJ13	LU72841	WHEELBOX ASSEMBLY	2
EJ14	GWN256	Nut, chromed, wheelbox	2
EJ15	LU54704807	Fitting Kit, wheelbox, including two angled bushes and two hard-rubber bezels with washer tubes and jets	1
EJ16	LU54703557	Outer Tubing, motor to first wheelbox	1
EJ17	LU54703573	Outer Tubing, first wheelbox to second wheelbox	1
EJ18	LU740746	Outer Tubing, short, second wheelbox	1
EJ19	131155	Grommet, rubber, sealing outer tubing to bulkhead	1

Plate No.	Part No.	Description	No. Off
WIPER ARMS AND BLADES			
WIPER ARMS AND BLADES, models with L.H. steering			
WIPER ARMS AND BLADES, fitted up to comm. no. CF1			
EJ20	151887	Wiper Arm, silver, L.H.	1
EJ21	151885	Wiper Arm, silver, R.H.	1
EJ22	151883	Wiper Blade Assembly, silver	2
WIPER ARMS AND BLADES, fitted after comm. no. CF1			
	159685	Wiper Arm, black, L.H.	1
	159684	Wiper Arm, black, R.H.	1
	159688	Wiper Blade Assembly, black	2
WIPER ARMS AND BLADES, models with R.H. steering			
WIPER ARMS AND BLADES, fitted up to comm. no. CR1			
	151888	Wiper Arm, silver, L.H.	1
	151886	Wiper Arm, silver, R.H.	1
	151883	Wiper Blade Assembly, silver	2
WIPER ARMS AND BLADES, fitted after comm. no. CR1			
	159686	Wiper Arm, black, L.H.	1
	159687	Wiper Arm, black, R.H.	1
	159688	Wiper Blade Assembly, black	2

PLATE EK

WINDSCREEN WASHER DETAILS
—EARLIER MODELS

TRIUMPH TR6



WINDSCREEN WASHER DETAILS—EARLIER MODELS

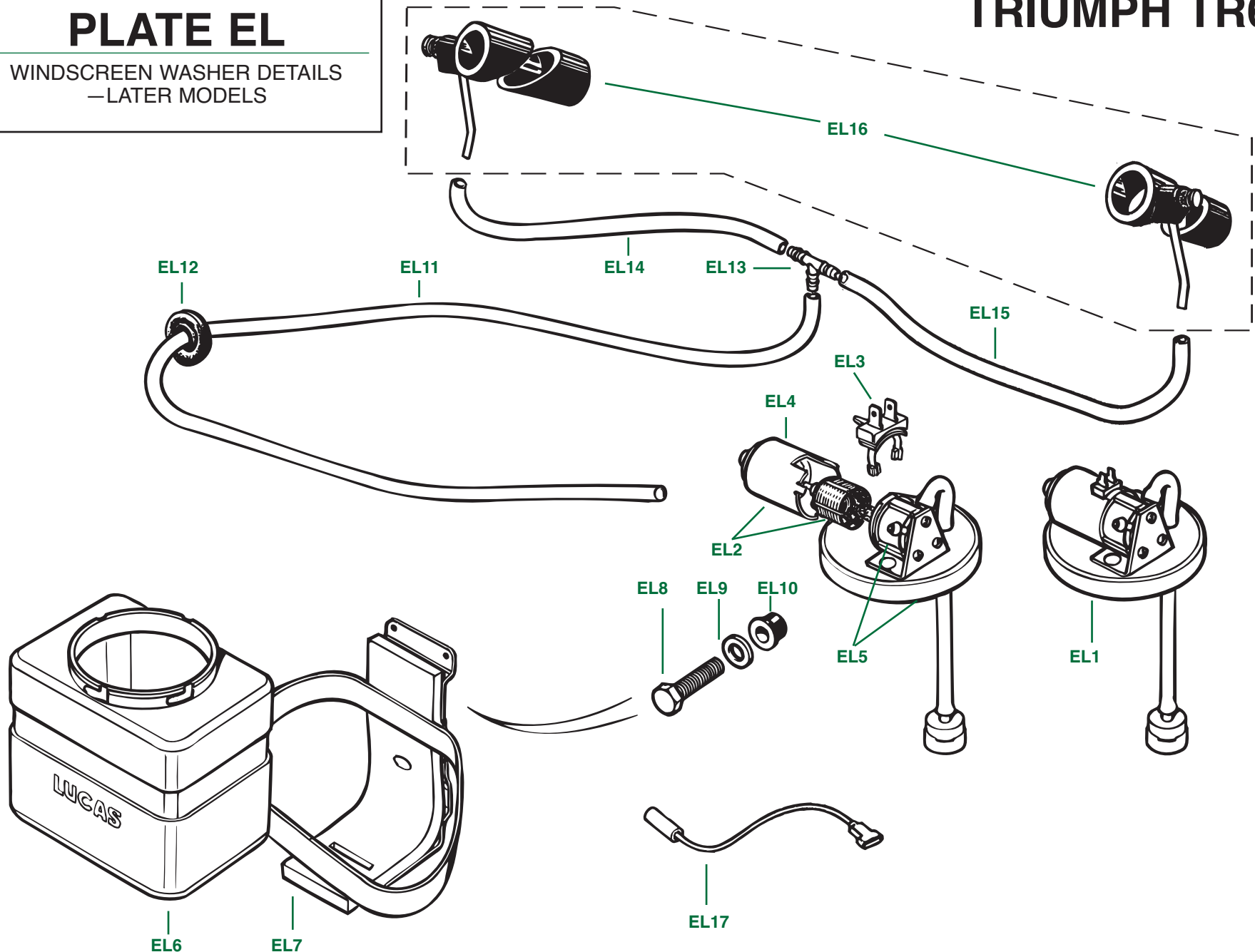
Plate No.	Part No.	Description	No. Off
EK1	LU54071460	ELECTRIC WINDSCREEN WASHER ASSEMBLY (Lucas Model 5SJ Screenjet), with oval bottle, fitted only to earliest cars in 1969	1
	LU78454	MOTOR AND PUMP ASSEMBLY	1
EK2	LU54700489	MOTOR	1
EK3	LU54711077	Brushes Set	1
EK4	LU54700377	Armature	1
EK5	LU54700286	Cover and Pump	1
	RFK175	BOTTLE, BRACKET, AND STRAP KIT	1
EK6	LU54713810	Bottle , oval	1
EK7	LU54713627	Cap , filler	1
EK8	LU54713814	Bracket and Strap Assembly	1
EK9	LU54071621	ELECTRIC WINDSCREEN WASHER ASSEMBLY (Lucas Model 5SJ Screenjet), with square bottle, fitted up to comm no. CF1/CR1	1
	LU78467	MOTOR AND PUMP ASSEMBLY	1
EK10	LU54700489	MOTOR	1
EK11	LU54711077	Brushes Set	1
EK12	LU54700377	Armature	1
EK13	LU54700286	Cover and Pump	1
	LU54704441	BOTTLE, BRACKET, AND STRAP KIT	1
EK14	518264	Bottle , square	1
EK15	518265	Bracket and Strap Assembly	1
		HARDWARE , securing washer assembly to bulkhead	
EK16	HU506	Screw , set	3
EK17	502452	Washer , plain	3
EK18	566293	Nut , Rawl	3
EK19	604148	Tube , delivery, bottle to T-piece (Priced per yard.)	A/R
EK20	61917	Grommet , bulkhead, on delivery tube and on wiring lead	2
EK21	625862	T-Piece	1
EK22	604147	Tube , delivery, T-piece to R.H. washer jet (Priced per yard.)	A/R
EK23	604146	Tube , delivery, T-piece to L.H. washer jet (Priced per yard.)	A/R
	618120	Valve , non-return	1
EK24	LU54704807	Jet and Bush Kit	1

Plate No.	Part No.	Description	No. Off
-----------	----------	-------------	---------

PLATE EL

WINDSCREEN WASHER DETAILS
—LATER MODELS

TRIUMPH TR6



WINDSCREEN WASHER DETAILS—LATER MODELS

Plate No.	Part No.	Description	No. Off
	RFK938	ELECTRIC WINDSCREEN WASHER ASSEMBLY (Lucas Model 10SJ Screenjet), with square bottle, fitted after comm. no. CF1/CR1; may also have been fitted in late 1972	1
EL1	LU54708880	MOTOR AND PUMP ASSEMBLY	1
EL2	LU54700489	MOTOR	1
EL3	LU54711077	Brushes Set	1
EL4	LU54703795	Armature	1
EL5	LU54700286	Cover and Pump	1
	LU54704441	BOTTLE, BRACKET, AND STRAP KIT	1
EL6	518264	Bottle , square	1
EL7	518265	Bracket and Strap Assembly	1
		HARDWARE , securing washer assembly to bulkhead	
EL8	HU506	Screw , set	3
EL9	502452	Washer , plain	3
EL10	566293	Nut , Rawl	3
EL11	604148	Tube , delivery, bottle to T-piece (Priced per yard.)	A/R
EL12	61917	Grommet , bulkhead, on delivery tube and on wiring lead	2
EL13	625862	T-Piece	1
EL14	604147	Tube , delivery, T-piece to R.H. jet (Priced per yard.)	A/R
EL15	604146	Tube , delivery, T-piece to L.H. jet (Priced per yard.)	A/R
EL16	LU54704807	Jet and Bush Kit	1
EL17	159370	Lead , wiring harness	1

Plate No.	Part No.	Description	No. Off
-----------	----------	-------------	---------