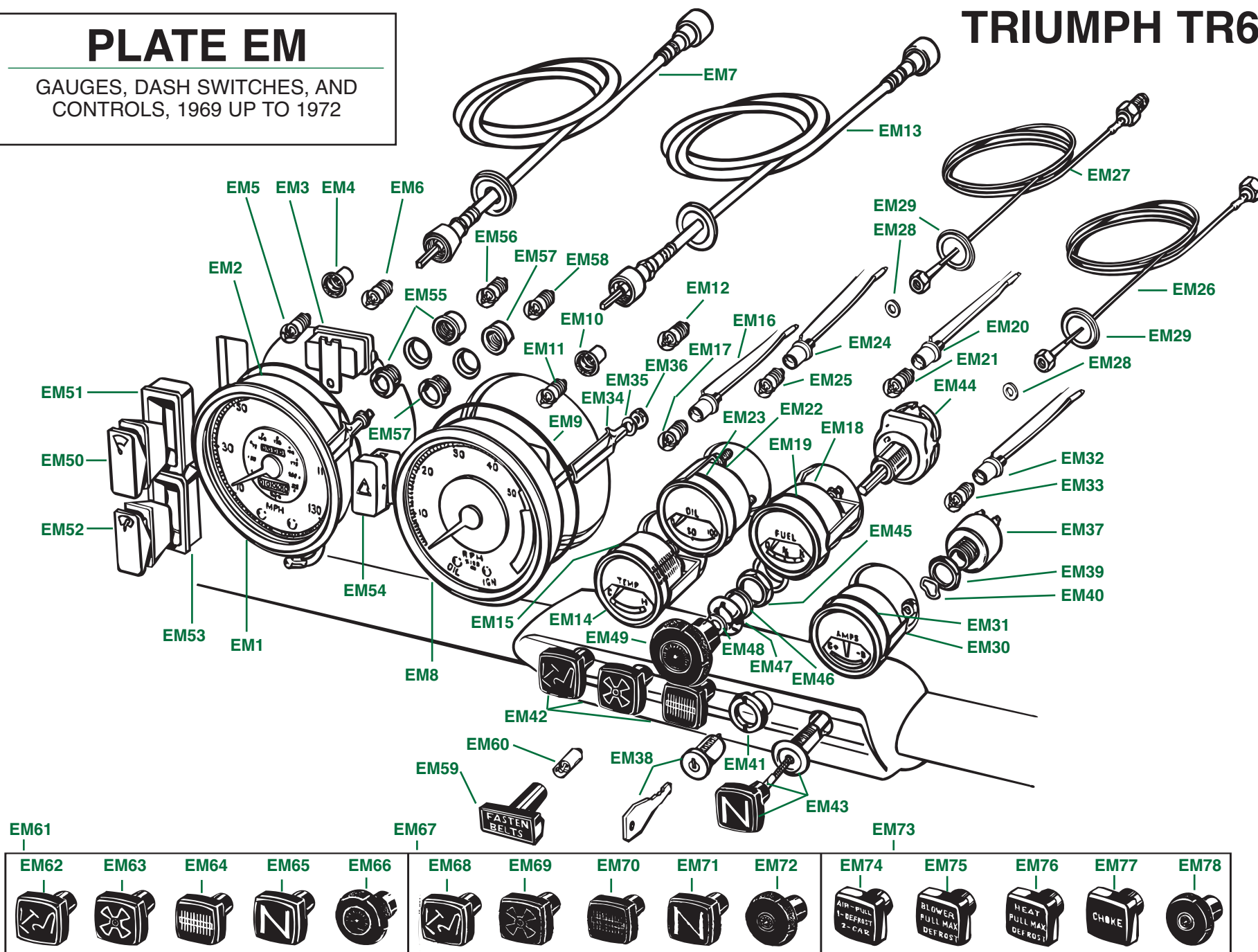


PLATE EM

GAUGES, DASH SWITCHES, AND
CONTROLS, 1969 UP TO 1972

TRIUMPH TR6



GAUGES, DASH SWITCHES, AND CONTROLS, 1969 UP TO 1972

Plate No.	Part No.	Description	No. Off
GAUGES			
SPEEDOMETER DETAILS			
EM1	214431	SPEEDOMETER , calibrated in miles, fitted to carb models up to comm. no. CF1 (3.7:1 rear axles)	1
	214431R	Rebuilt Unit	1
	214432	SPEEDOMETER , calibrated in kilometers, fitted to carb models up to comm. no. CF1 (3.7:1 rear axles)	1
	214432R	Rebuilt Unit	1
	214427	SPEEDOMETER , calibrated in miles, fitted to P.I. models up to comm. no. CR1 (3.45:1 rear axles)	1
	214427R	Rebuilt Unit	1
	214428	SPEEDOMETER , calibrated in kilometers, fitted to P.I. models up to comm. no. CR1 (3.45:1 rear axles)	1
	214428R	Rebuilt Unit	1
EM2	SLP170	Gasket , rubber, between speedometer and dash	1
EM3	148876	Voltage Stabilizer	1
EM4	LU54967050	Bulbholder , speedometer illumination	2
EM5	LULLB987	Bulb , speedometer illumination	2
EM6	LULLB987	Bulb , high-beam and turn signal warning lamps	2
EM7		Speedometer Cables (See Section EP.)	1
TACHOMETER DETAILS			
EM8	214263	TACHOMETER (REVOLUTION COUNTER) , fitted to all models up to comm. nos. CF1 and CR1	1
	214263R	Rebuilt Unit	1
EM9	SLP170	Gasket , rubber, between tachometer and dash	1
EM10	LU54967050	Bulbholder , tachometer illumination	2
EM11	LULLB987	Bulb , tachometer illumination	2
EM12	LULLB987	Bulb , oil-pressure and ignition warning lamps	2
EM13		Tachometer Cables (See Section EP.)	1
WATER-TEMPERATURE GAUGE DETAILS			
EM14	147963	GAUGE , water temperature, fitted up to comm. nos. CF1 and CR1	1
	147963R	Rebuilt Unit	1
EM15	SLP171	Gasket , rubber, between temperature gauge and dash	1
EM16	LUCAB301	Bulbholder , gauge illumination	1
EM17	LULLB987	Bulb , gauge illumination	1

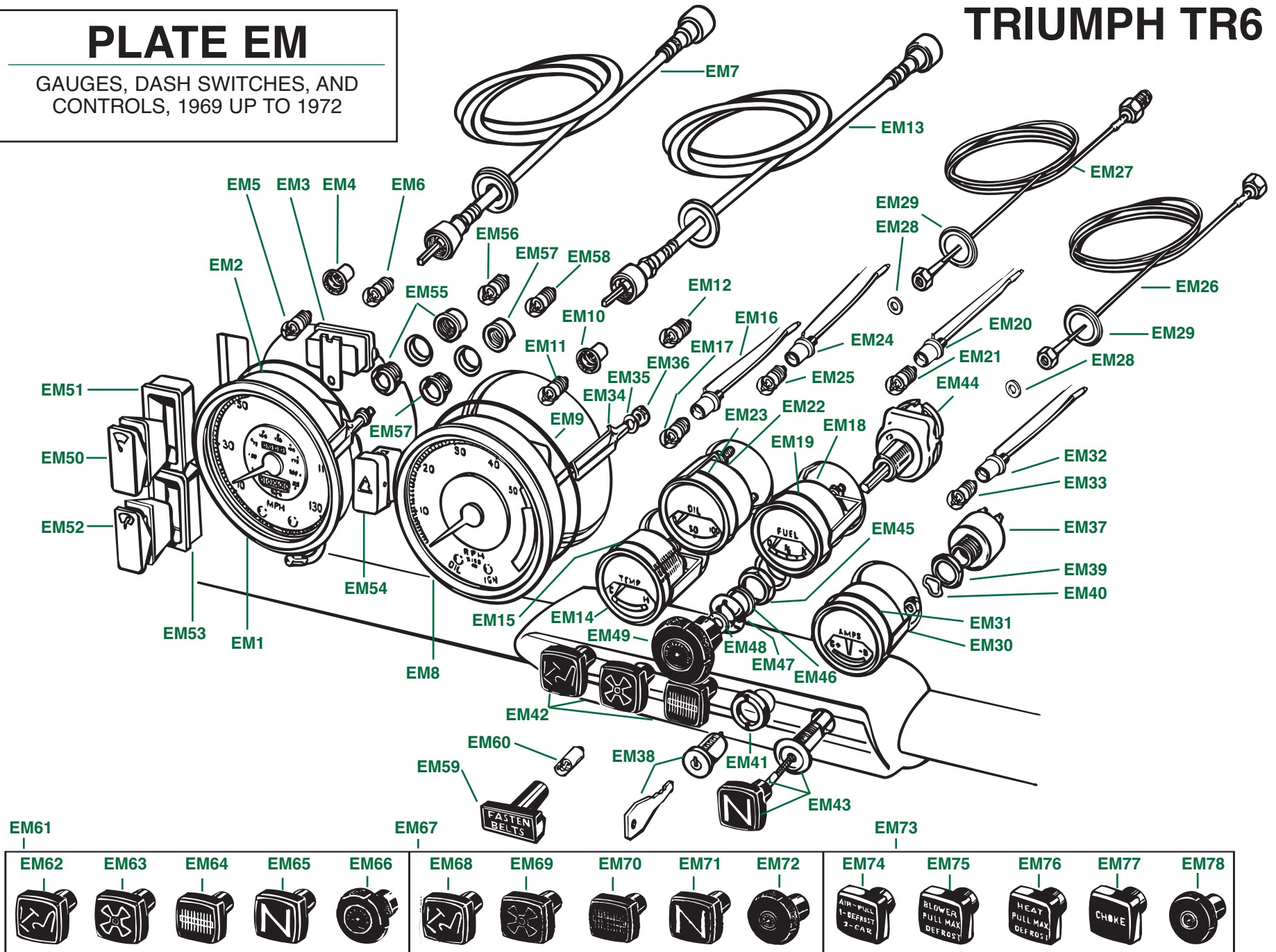
Plate No.	Part No.	Description	No. Off
GAUGES—Continued			
FUEL LEVEL GAUGE DETAILS			
EM18	147961	GAUGE , fuel level, fitted up to comm. nos. CF1 and CR1	1
	147961R	Rebuilt Unit	1
EM19	SLP171	Gasket , rubber, between fuel-level gauge and dash	1
EM20	LUCAB301	Bulbholder , gauge illumination	2
EM21	LULLB987	Bulb , gauge illumination	2
OIL-PRESSURE GAUGE DETAILS			
EM22	147960	GAUGE , engine oil pressure, fitted up to comm. nos. CF1 and CR1	1
	147960R	Rebuilt Unit	1
EM23	SLP171	Gasket , rubber, between oil pressure gauge and dash	1
EM24	LUCAB301	Bulbholder , gauge illumination	1
EM25	LULLB987	Bulb , gauge illumination	1
EM26	149867	Pipe Assembly , oil pressure gauge to engine oil gallery, female fitting at engine-end of pipe assembly, fitted to all carb models	1
EM27	138308	Pipe Assembly , oil pressure gauge to engine oil gallery, male fitting at engine-end of pipe assembly, fitted to all P.I. models	1
EM28	54902	Washer , leather, sealing connection between pipe and oil pressure gauge	1
EM29	600395	Grommet , rubber, oil pressure pipe to bulkhead	1
	59380	HARDWARE , securing pipe to bulkhead shelf; may not have been used on all models	1
	YA583	Clip	1
		Screw , self-tapping	1
AMMETER DETAILS			
EM30	151272	AMMETER , fitted up to comm. nos. CF1 and CR1	1
	151272R	Rebuilt Unit	1
EM31	SLP171	Gasket , rubber, between ammeter and dash	1
EM32	LUCAB301	Bulbholder , gauge illumination	1
EM33	LULLB987	Bulb , gauge illumination	1
MISCELLANEOUS ADDITIONAL DETAILS			
EM34	620847	Clamp , shovel-type, used on various gauges	A/R
EM35	WQ304	Washer , lock, securing shovel-clamps	A/R
EM36	620848	Nut , knurled, securing gauges, smaller size	A/R
	SLP173	Nut , knurled, securing gauges, larger size	A/R
	RFK632	Gasket Set , gauges to dash, including two larger gaskets and four smaller gaskets	1

(Continued on next page.)

PLATE EM

GAUGES, DASH SWITCHES, AND
CONTROLS, 1969 UP TO 1972

TRIUMPH TR6



GAUGES, DASH SWITCHES, AND CONTROLS, 1969 UP TO 1972

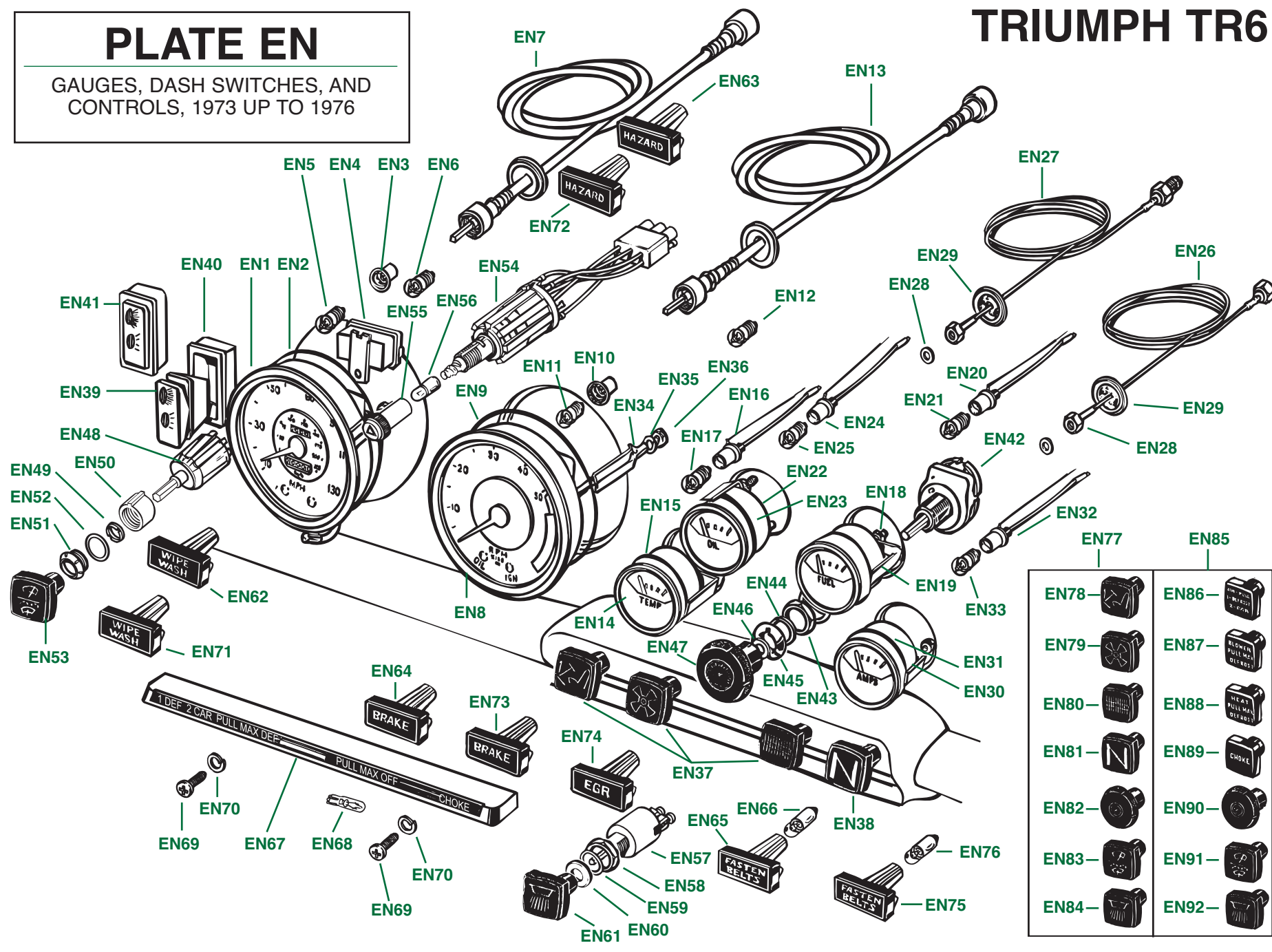
Plate No.	Part No.	Description	No. Off
SWITCHES AND CONTROLS			
IGNITION SWITCH DETAILS , fitted to most models up to CC/CP50000 only			
EM37	127651	Switch , ignition and starter; mounted on dash; does not include lock and keys	1
EM38	572540	Lock , ignition and starter switch, with two keys	1
HARDWARE , securing ignition switch to switch plinth			
EM39	510369	Nut , inner	1
EM40	128087	Washer , lock	1
EM41	609793	Bezel	1
Please Note: Ignition Switch/Starter Switch/Steering Column Lock Details fitted to most models after comm. no. CC/CP50000 are found in Section ER.			
EM42	HEATER CONTROLS AND SWITCH DETAILS		
(See Section ET)			
EM43	CHOKE CONTROL DETAILS (See Section BC.)		
PANEL-LAMPS SWITCH DETAILS			
EM44	129768	Switch , panel lamps, fitted up to comm. no. CF1	1
EM45	510368	Nut , on switch	1
EM46	128088	Washer , spring	1
EM47	143537	Bezel	1
EM48	59445	Washer	1
EM49	LU54326212	Knob , fitted up to comm. no. CC/CP50000	1
	LU54328700	Knob , fitted after comm. no. CC/CP50000	1
WINDSCREEN WIPER AND WASHER SWITCHES			
EM50	151431	SWITCH , windscreen wipers, all models except U.S., fitted up to comm. no. CF1	1
	151431	SWITCH , windscreen wipers, U.S. models, fitted up to comm. no. CC75000	1
	158453	SWITCH , windscreen wipers, U.S. models, fitted from comm. no. CC75000 up to CF1	1
EM51	148437	Escutcheon, wiper switch	1
EM52	148418	SWITCH , windscreen washer, all models except U.S., fitted up to comm. no. CF1	1
	148418	SWITCH , windscreen washer, U.S. models, fitted up to comm. no. CC75000	1
	158452	SWITCH , windscreen washer, U.S. models, fitted from comm. no. CC75000 up to CF1	1
EM53	148437	Escutcheon, washer switch	1
Please Note: Original Clear Hooters brand rocker switches for windscreen washers and wipers are no longer available from any source. TRF supplies Lucas replacement switches under part numbers 158453 and 158452. These are suitable replacements, but their use requires enlargement of the slot in the steel mounting plate attached to the back of the dash Further instructions are included with the switches when they are sold			

Plate No.	Part No.	Description	No. Off
SWITCHES AND CONTROLS—Continued			
HAZARD WARNING SWITCHES			
EM54	148401	Switch , rocker type, hazard warning (Lucas part no. 35857A), L.H.S. models only, fitted up to mid-1971, or possibly later	1
	156044	Switch , rocker type, hazard warning (Lucas part no. 39665), L.H.S. models only, fitted after mid-1971, possibly not until 1972 model year	1
WARNING LAMPS			
Please Note: Bulbs for high-beam, turn signal, oil-pressure, and ignition warning lamps are listed with speedometers and tachometers above.			
EM55	148830	Hazard Warning Lamp Assembly , L.H.S. models only, fitted up to comm. no. CF1	1
EM56	LULLB987	Bulb , hazard warning lamp	1
EM57	148830	Brake Warning Lamp Assembly , actuated by switch on pressure differential valve listed in Section DM	1
EM58	LULLB987	Bulb , brake warning lamp	1
EM59	158496	Seat Belt Warning Lamp Assembly , fitted to U.S.A. models from comm. no. CC75000 up to body no. 34067CF	1
EM60	LULLB281	Bulb , seat belt warning lamp	1
DASH KNOB SETS			
EM61	RFK635	KNOB SET , dash switches and controls, fitted up to comm. no. CC/CP50000	1
EM62	712909	Heater Control Knob , air distribution	1
EM63	712911	Heater Control Knob , heater blower	1
EM64	712903	Heater Control Knob , water valve	1
EM65	712907	Choke Control Knob	1
EM66	LU54326212	Panel Lamp Switch Knob	1
EM67	RFK636	KNOB SET , dash switches and controls, fitted to all models other than U.S. after comm. no. CP50000; fitted to U.S. models from comm. no. CC50000 up to CC75000	1
EM68	712909	Heater Control Knob , air distribution	1
EM69	712911	Heater Control Knob , heater blower	1
EM70	712903	Heater Control Knob , water valve	1
EM71	712907	Choke Control Knob	1
EM72	LU54328700	Panel Lamps Switch Knob	1
EM73	RFK637	KNOB SET , dash switches and controls, fitted to U.S.A. models from comm. no. CC75000 up to CF1	1
EM74	725370	Heater Control Knob , air distribution	1
EM75	725371	Heater Control Knob , heater blower	1
EM76	725372	Heater Control Knob , water valve	1
EM77	725373	Choke Control Knob	1
EM78	LU54328700	Panel Lamps Switch Knob	1

PLATE EN

GAUGES, DASH SWITCHES, AND
CONTROLS, 1973 UP TO 1976

TRIUMPH TR6



GAUGES, DASH SWITCHES, AND CONTROLS, 1973 UP TO 1976

Plate No.	Part No.	Description	No. Off
GAUGES			
SPEEDOMETER DETAILS			
EN1	218827	SPEEDOMETER , calibrated in miles, fitted to carb models from comm. no. CF1 up to CF35000 (3.7:1 rear axles)	1
	218827R	Rebuilt Unit	1
	TKC2426	SPEEDOMETER , calibrated in miles, fitted to U.S. models after comm. no. CF35000 (3.7:1 rear axles)	1
	TKC2426R	Rebuilt Unit	1
	218828	SPEEDOMETER , calibrated in kilometers, fitted to carb models after comm. no. CF1 (3.7:1 rear axles)	1
	218828R	Rebuilt Unit	1
	218831	SPEEDOMETER , calibrated in miles, fitted to P.I. models after comm. no. CR1 (3.45:1 rear axles)	1
	218831R	Rebuilt Unit	1
	218832	SPEEDOMETER , calibrated in kilometers, fitted to P.I. models after comm. no. CR1 (3.45:1 rear axles)	1
	218832R	Rebuilt Unit	1
	TKC2139	SPEEDOMETER , calibrated in kilometers, fitted to P.I. models exported to Australia, after comm. no. CR5000 (3.45:1 rear axles)	1
	TKC2139R	Rebuilt Unit	1
EN2	SLP170	Gasket , rubber, between speedometer and dash	1
EN3	148876	Voltage Stabilizer	1
EN4	LU54967050	Bulbholder , speedometer illumination	2
EN5	LULLB987	Bulb , speedometer illumination	2
EN6	LULLB987	Bulb , high-beam and turn signal warning lamps	2
EN7		Speedometer Cables (See Section EP.)	1
TACHOMETER DETAILS			
EN8	218833	TACHOMETER (REVOLUTION COUNTER) , fitted to all models after comm. nos. CF1 and CR1	1
	218833R	Rebuilt Unit	1
EN9	SLP170	Gasket , rubber, between tachometer and dash	1
EN10	LU54967050	Bulbholder , tachometer illumination	2
EN11	LULLB987	Bulb , tachometer illumination	2
EN12	LULLB987	Bulb , oil-pressure and ignition warning lamps	2
EN13		Tachometer Cables (See Section EP.)	1
WATER-TEMPERATURE GAUGE DETAILS			
EN14	159606	GAUGE , water temperature, fitted after comm. nos. CF1 and CR1	1
	159606R	Rebuilt Unit	1
EN15	SLP171	Gasket , rubber, between temperature gauge and dash	1
EN16	LUCAB301	Bulbholder , gauge illumination	1
EN17	LULLB987	Bulb , gauge illumination	1

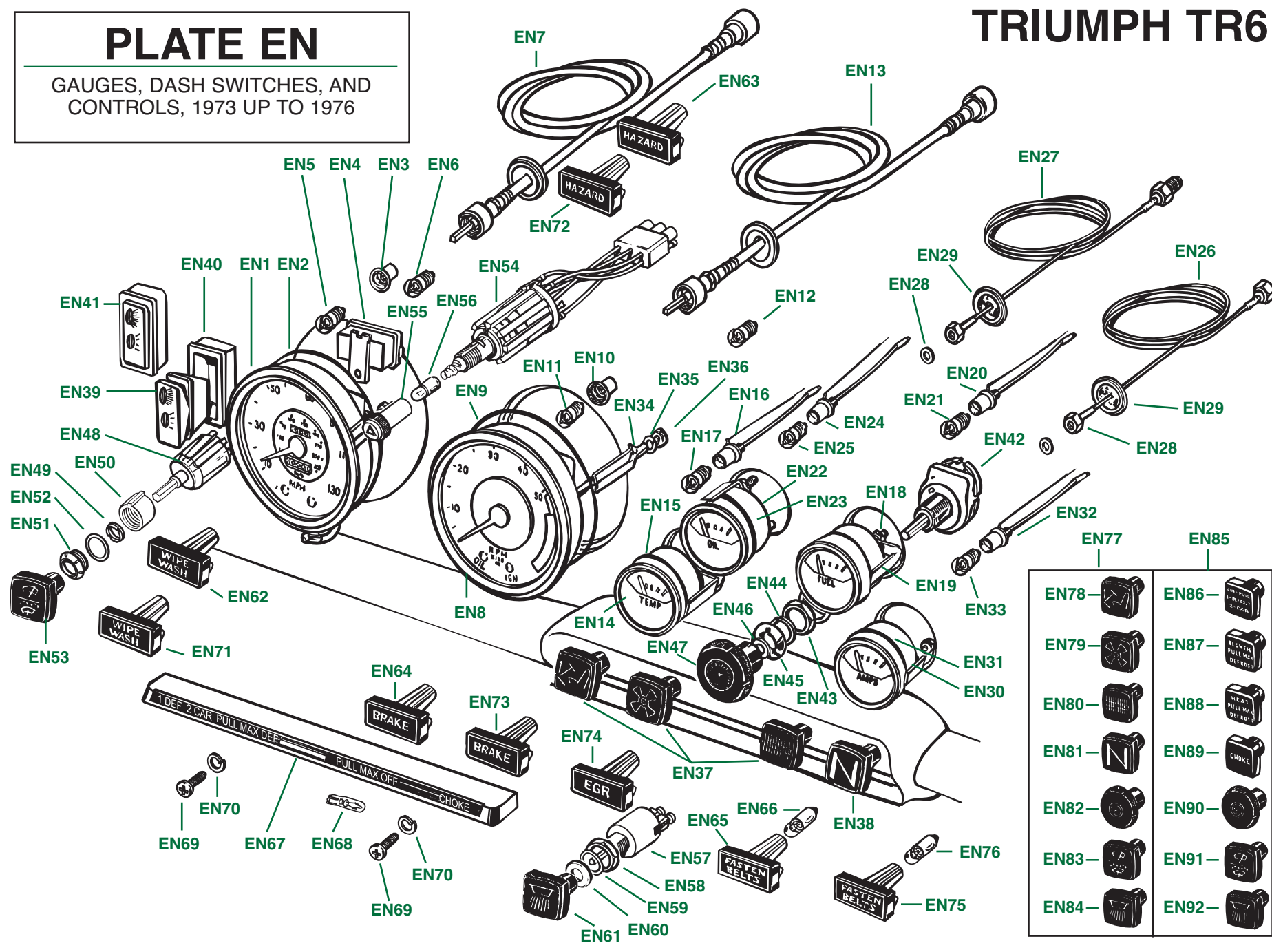
Plate No.	Part No.	Description	No. Off
GAUGES—Continued			
FUEL-LEVEL GAUGE DETAILS			
EN18	159604	GAUGE , fuel level, fitted after comm. nos. CF1 and CR1	1
	159604R	Rebuilt Unit	1
EN19	SLP171	Gasket , rubber, between fuel-level gauge and dash	1
EN20	LUCAB301	Bulbholder , gauge illumination	1
EN21	LULLB987	Bulb , gauge illumination	1
OIL-PRESSURE GAUGE DETAILS			
EN22	159608	GAUGE , engine oil pressure, fitted after comm. nos. CF1 and CR1	1
	159608R	Rebuilt Unit	1
EN23	SLP171	Gasket , rubber, between oil-pressure gauge and dash	1
EN24	LUCAB301	Bulbholder , gauge illumination	1
EN25	LULLB987	Bulb , gauge illumination	1
EN26	149867	Pipe Assembly , oil pressure gauge to engine oil gallery, female fitting at end of pipe assembly, fitted to all carb models	1
EN27	138308	Pipe Assembly , oil pressure gauge to engine oil gallery, male fitting at end of pipe assembly, fitted to all P.I. models	1
EN28	54902	Washer , leather, sealing connection between pipe and oil pressure gauge	1
EN29	600395	Grommet , rubber, oil pressure pipe to bulkhead	1
		HARDWARE , securing pipe to bulkhead shelf; may not have been used on all models	1
	59380	Clip	1
	YA583	Screw , self-tapping	1
VOLTAGE-INDICATOR DETAILS			
EN30	159605	GAUGE , voltage indicator	1
	159605R	Rebuilt Unit	1
EN31	SLP171	Gasket , rubber, between gauge and dash	1
EN32	LUCAB301	Bulbholder , gauge illumination	1
EN33	LULLB987	Bulb , gauge illumination	1
MISCELLANEOUS ADDITIONAL DETAILS			
EN34	620847	Clamp , shovel-type, used on various gauges	A/R
EN35	WQ304	Washer , lock, securing shovel-clamps	A/R
EN36	620848	Nut , knurled, securing gauges, smaller size	A/R
	SLP173	Nut , knurled, securing gauges, larger size	A/R
	RFK632	Gasket Set , gauges to dash, including two larger gaskets and four smaller gaskets	1

(Continued on next page.)

PLATE EN

GAUGES, DASH SWITCHES, AND
CONTROLS, 1973 UP TO 1976

TRIUMPH TR6



EN78	EN86
EN79	EN87
EN80	EN88
EN81	EN89
EN82	EN90
EN83	EN91
EN84	EN92

GAUGES, DASH SWITCHES, AND CONTROLS, 1973 UP TO 1976

Plate No.	Part No.	Description	No. Off
SWITCHES AND CONTROLS			
Please Note: Ignition Switch/Starter Switch/Steering Column Lock Details fitted to most models after comm. no. CC/CP50000 are found in Section ER.			
EN37		HEATER CONTROLS AND SWITCH DETAILS (See Section ET.)	
EN38		CHOKE AND CONTROL DETAILS (See Section BC.)	
		MASTER LIGHTING SWITCHES	
	520058	SWITCH ASSEMBLY , master lighting, Clear Hooters brand, fitted after comm. nos. CF1 and CR1	1
EN39	150380	Switch , master lighting	1
EN40	148437	Escutcheon , plastic, master lighting switch	1
EN41	LU30731	SWITCH ASSEMBLY , master lighting, Lucas brand; alternative to Clear Hooters brand switch assembly listed above	1
Please Note: Clear Hooters lighting switches were the subject of a factory recall, when the dealers replaced them with Lucas-brand switches. However, fitting the Lucas switch requires modification to the steel mounting plate attached to the back of the dash panel, and many owners elected not to participate in the recall. Clear Hooters brand switches are now unavailable, and TRF supplies the Lucas switches as a direct supersession			
PANEL-LAMPS SWITCH DETAILS			
EN42	LU78478	Switch , panel lamps, fitted to all models except U.S.A., after comm. no. CR1	1
	LU78511	Switch , panel lamps, fitted to U.S. models in early 1973	1
	LU78520	Switch , panel lamps, fitted to U.S. models after early 1973	1
EN43	510368	Nut , on switch	1
EN44	128088	Washer , spring	1
EN45	143537	Bezel	1
EN46	59445	Washer	1
EN47	LU54328700	Knob , panel lamp switch	1
WINDSCREEN-WIPER-AND-WASHER-SWITCH DETAILS			
EN48	155496	Switch , windscreen wipers and windscreen washer, fitted after comm. nos. CF1 and CR1	1
MOUNTING DETAILS , switch to dash			
EN49	622682	Nut , spacer	1
EN50	621510	Spacer	1
EN51	622443	Bezel	1
EN52	616048	Washer , P.V.C.	1
EN53	725374	Knob , wiper and washer switch	1

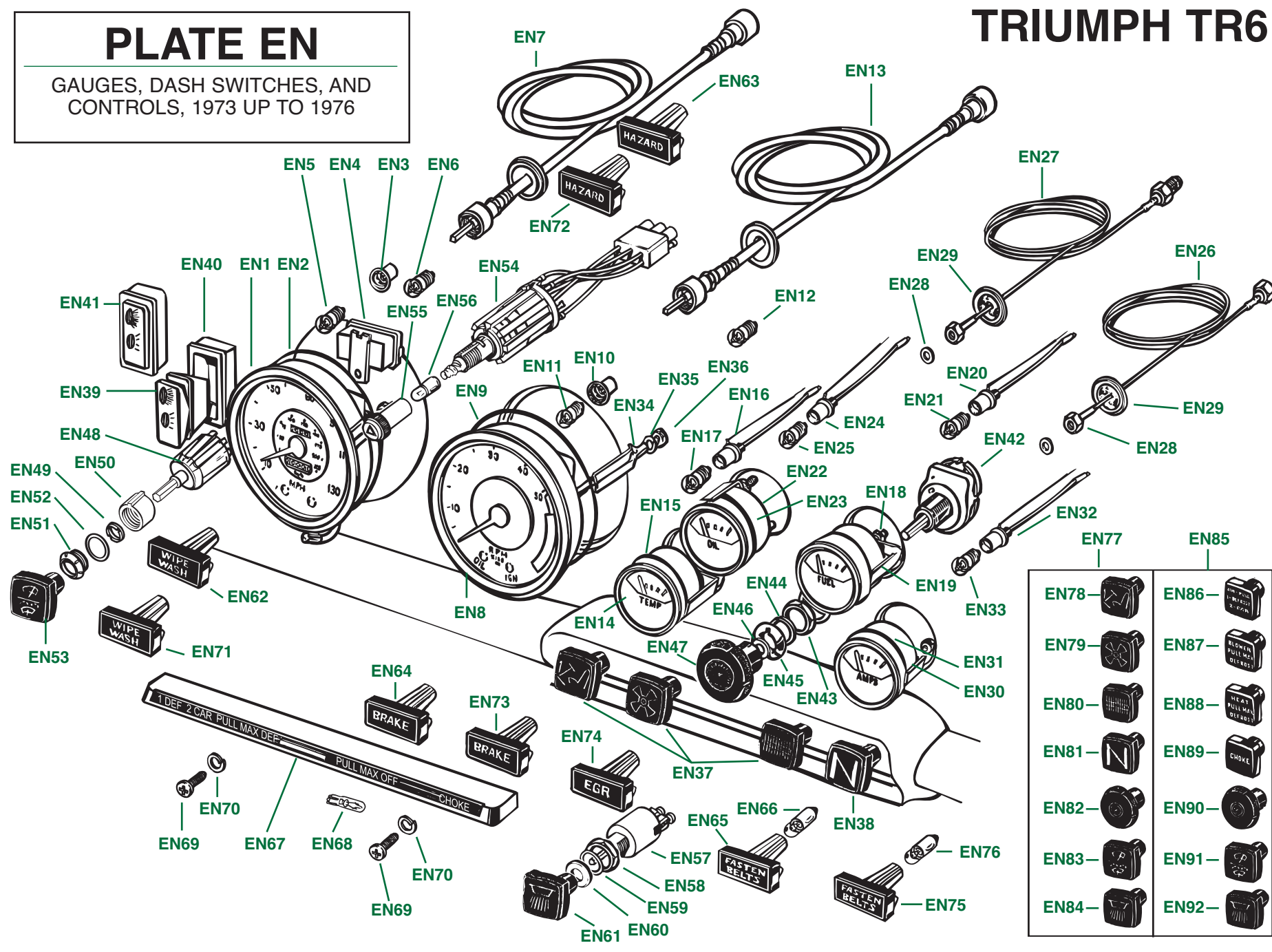
Plate No.	Part No.	Description	No. Off
SWITCHES AND CONTROLS—Continued			
HAZARD-WARNING SWITCH DETAILS			
EN54	LU39976	SWITCH , hazard warning	1
EN55	LU54329399	Knob/Lens , hazard warning switch	1
EN56	LULLB281	Bulb , fitted in hazard knob	1
INTERIOR LAMP SWITCH DETAILS			
EN57	130544	Switch , interior lamps, fitted after comm. nos. CF1 and CR1	1
MOUNTING DETAILS , switch to padded dash support			
EN58	510396	Nut	1
EN59	128089	Washer , lock	1
EN60	609933	Bezel	1
EN61	712905	Knob , interior lamps switch	1
WARNING LAMPS AND SWITCH-IDENTIFICATION LAMPS			
Please Note: Bulbs for high-beam, turn signal, oil-pressure, and ignition warning lamps for all models are listed with speedometers and tachometers above.			
WARNING LAMPS AND SWITCH-IDENTIFICATION LAMPS , fitted from 1973 up to 1974, U.S. models only			
EN62	159894	Lamp , identification, windscreen wiper and washer switch, fitted from comm. no. CF1 up to body no. 34067CF	1
EN63	159907	Lamp , identification, hazard switch, fitted from comm. no. CF1 up to body no. 34067CF	1
EN64	159906	Lamp , warning, brakes, fitted from comm. no. CF1 up to body no. 34067CF	1
EN65	158496	Lamp , warning, seat belts, fitted from comm. no. CF75000 up to body no. 34067CF	1
EN66	LULLB281	Bulb , used in warning lamps and switch identification lamps	4
EN67	219139	Lamp , identification, heater controls, fitted after comm. no. CF1	1
EN68	LULLB286	Bulb , used in heater control identification lamp	1
HARDWARE , securing heater controls identification lamp to dash support			
EN69	PX506	Screw , set	2
EN70	WQ305	Washer , lock	2

(Continued on next page.)

PLATE EN

GAUGES, DASH SWITCHES, AND
CONTROLS, 1973 UP TO 1976

TRIUMPH TR6



EN78	EN86
EN79	EN87
EN80	EN88
EN81	EN89
EN82	EN90
EN83	EN91
EN84	EN92

GAUGES, DASH SWITCHES, AND CONTROLS, 1973 UP TO 1976

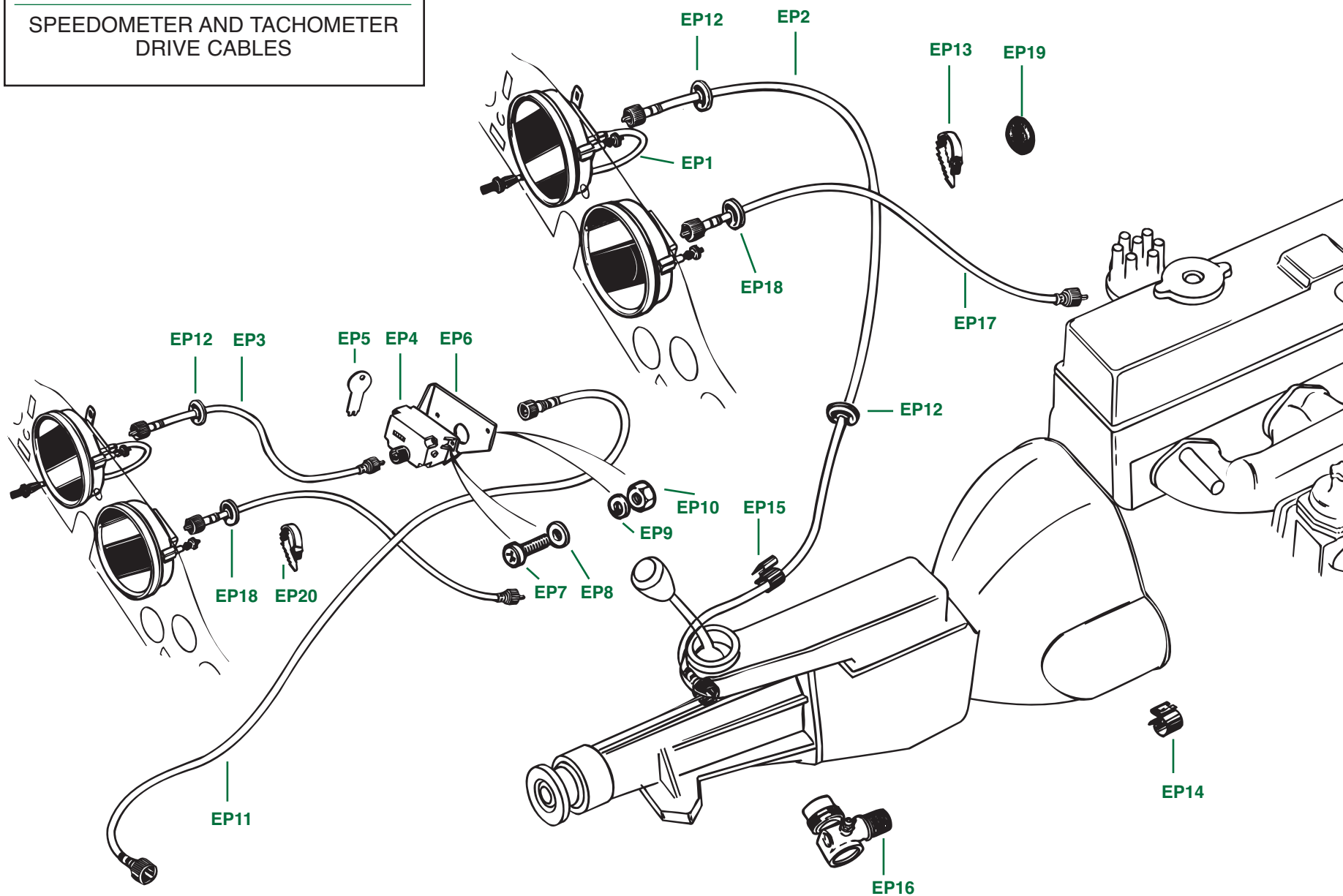
Plate No.	Part No.	Description	No. Off
WARNING LAMPS AND SWITCH-IDENTIFICATION			
LAMPS—Continued			
WARNING LAMPS AND SWITCH IDENTIFICATION			
LAMPS , fitted from 1975 up to 1976, U.S. models only			
EN71	UKC5814	Lamp , identification, windscreen wiper and washer switch, fitted after body no. 34067CF	1
EN72	UKC5813	Lamp , identification, hazard warning switch, fitted after body no. 34067CF	1
EN73	UKC5812	Lamp , warning, brakes, fitted after body no. 34067CF	1
EN74	UKC4394	Lamp , warning, EGR service, fitted from body no. 12501CF up to body no. 34067CF	1
	13H9408	Lamp , warning, EGR service, fitted after body no. 34067CF	1
EN75	13H7986	Lamp , warning, seat belts, fitted after body no. 34067CF	1
EN76	LULLB281	Bulb , used in warning lamps and switch identification lamps	5
	219139	Lamp , identification, heater controls, fitted after comm. no. CF1	1
	LULLB286	Bulb , used in heater control identification lamp	1
HARDWARE , securing heater controls identification lamp to dash support			
	PX506	Screw	2
	WQ305	Washer , lock	2
DASH KNOB SETS			
EN77	RFK633	KNOB SET , dash switches and controls, all models except U.S., fitted after comm. no. CR1	1
EN78	712909	Heater Control Knob , air distribution	1
EN79	712911	Heater Control Knob , heater blower	1
EN80	712903	Heater Control Knob , water valve	1
EN81	712907	Choke Control Knob	1
EN82	LU54328700	Panel Lamps Switch Knob	1
EN83	725374	Wiper/Washer Switch Knob	1
EN84	712905	Interior Light Switch Knob	1
EN85	RFK634	KNOB SET , dash switches and controls, U.S. models, fitted after comm. no. CF1	1
EN86	725370	Heater Control Knob , air distribution	1
EN87	725371	Heater Control Knob , heater blower	1
EN88	725372	Heater Control Knob , water valve	1
EN89	725373	Choke Control Knob	1
EN90	LU54328700	Panel Lamps Switch Knob	1
EN91	725374	Wiper/Washer Switch Knob	1
EN92	712905	Interior Light Switch Knob	1

Plate No.	Part No.	Description	No. Off
-----------	----------	-------------	---------

PLATE EP

SPEEDOMETER AND TACHOMETER
DRIVE CABLES

TRIUMPH TR6



SPEEDOMETER AND TACHOMETER DRIVE CABLES

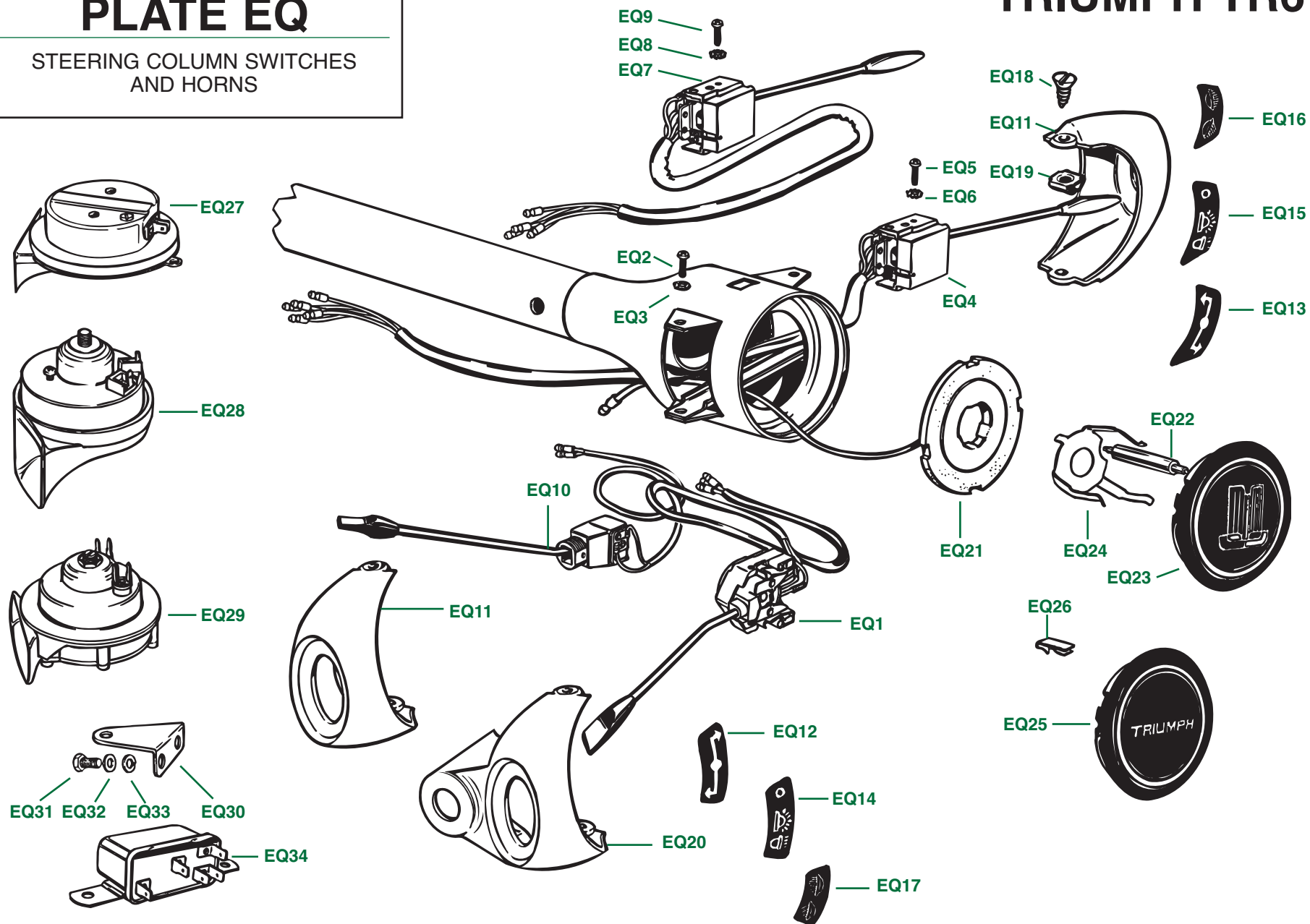
Plate No.	Part No.	Description	No. Off
ODOMETER RESET CABLES			
EP1	159738	Cable Assembly , trip odometer reset, fitted to all models	1
SPEEDOMETER DRIVE CABLES , U.S. models			
EP2	GSD169	Cable Assembly , 69-inch length, U.S. models up to comm. no. CF35000; fits cars with and without overdrive	1
		SPEEDOMETER DRIVE DETAILS , fitted to U.S. models after comm. no. CF35000	1
EP3	UKC5364	Cable Assembly , 15-inch length, from speedometer to service interval counter	1
EP4	UKC4260	Counter , service interval	1
EP5	BLT5007	Key , for resetting counter	1
EP6	UKC5324	Bracket , mounting service interval counter, mounted to bulkhead shelf using one of the pedal-box mountings	1
		HARDWARE , securing service interval counter to mounting bracket	
EP7	PX504	Screw , set	2
EP8	WP5	Washer , plain	2
EP9	WL205	Washer , lock	2
EP10	HN2005	Nut , hex	2
EP11	UKC5369	Cable Assembly , 52-inch length, from service counter to gearbox	1
SPEEDOMETER DRIVE CABLES , all models except U.S.			
	GSD169	Cable Assembly , 69-inch length, all models with L.H. steering (except U.S.); fits cars with and without overdrive	1
	504948	Cable Assembly , 66-inch length, non-overdrive models with R.H. steering	1
	504613	Cable Assembly , 63-inch length, overdrive models with R.H. steering	1
MISCELLANEOUS DETAILS , speedometer drive cables			
EP12	602037	Grommet , rubber, cable through holes in bulkhead and wheelarch gusset	1 2
EP13	145890	Cleat , fir tree, securing cable	1
EP14	551490	Clip , securing cable to chassis frame	1
EP15	148820	Clip , models with L.H. steering only	1
EP16	120694	Angle Drive Assembly , fitted to all models with R.H. steering; fitted to overdrive models with L.H. steering	1
	120694R	Angle Drive Assembly , rebuilt unit	1

Plate No.	Part No.	Description	No. Off
TACHOMETER DRIVE CABLES			
EP17	134733	Cable Assembly , 31-inch length, all carb models with L.H. steering	1
	148704	Cable Assembly , 33-inch length, P.I. models with L.H. steering, fitted up to comm. no. CP50000	1
	154607	Cable Assembly , P.I. models with L.H. steering, fitted after comm. no. CP50000	1
	144370	Cable Assembly , 42-inch length, P.I. models with R.H. steering, fitted up to comm. no. CR5000 approx.	1
	UKC2873	Cable Assembly , 48-inch length, P.I. models with R.H. steering, fitted after comm. no. CR5000 approx.	1
MISCELLANEOUS DETAILS , tachometer drive cables			
EP18	602037	Grommet , rubber, cable through hole in bulkhead	1
EP19	600399	Plug , rubber, blanking grommet hole, if required	1
EP20	145890	Cleat , fir tree, smaller, if required for anchoring cable to another cable	1
	145891	Cleat , fir tree, larger, anchoring cable to vacuum pipe on metering unit, P.I. models only	1
Please Note: The Roadster Factory provides grey speedometer and tachometer cables made to original Smiths specifications for all TR6 applications.			

PLATE EQ

STEERING COLUMN SWITCHES
AND HORNS

TRIUMPH TR6



STEERING COLUMN SWITCHES AND HORNS

Plate No.	Part No.	Description	No. Off
SWITCHES MOUNTED ON STEERING COLUMN			
TURN SIGNAL SWITCHES			
EQ1	158966	Switch , turn signals, L.H.S. models	1
	147277	Switch , turn signals, R.H.S. models	1
		HARDWARE , securing turn signal switch to steering column cowl	1
EQ2	TP402	Screw , set	2
EQ3	WE604	Washer , shakeproof	2
MASTER LIGHTING SWITCHES , fitted up to comm. nos. CF1 and CR1			
EQ4	141858	Switch , master lighting, L.H.S. models, except U.S.A.	1
	141858	Switch , master lighting, U.S.A. models, up to comm. no. CC75000	1
	158358	Switch , master lighting, U.S.A. models, from comm. no. CC75000 up to CF1	1
	142579	Switch , master lighting, R.H.S. models	1
		HARDWARE , securing master lighting switch to steering column cowl	
EQ5	TP402	Screw , set	2
EQ6	WE604	Washer , shakeproof	2
HEADLAMP DIMMER SWITCHES , fitted after comm. nos. CF1 and CR1			
EQ7	148648	Switch , headlamp dimmer, L.H.S. models	1
	152616	Switch , headlamp dimmer, R.H.S. models	1
		HARDWARE , securing headlamp dimmer switch to steering column cowl	
EQ8	TP402	Screw , set	2
EQ9	WE604	Washer , shakeproof	2
OVERDRIVE SWITCHES			
EQ10	147281	Switch , overdrive, L.H.S. models	1
	147280	Switch , overdrive, R.H.S. models	1
		HARDWARE , securing overdrive switch to plastic switch escutcheon	
	609792	Bezel , chromed	1
	WM712	Washer , shakeproof	1

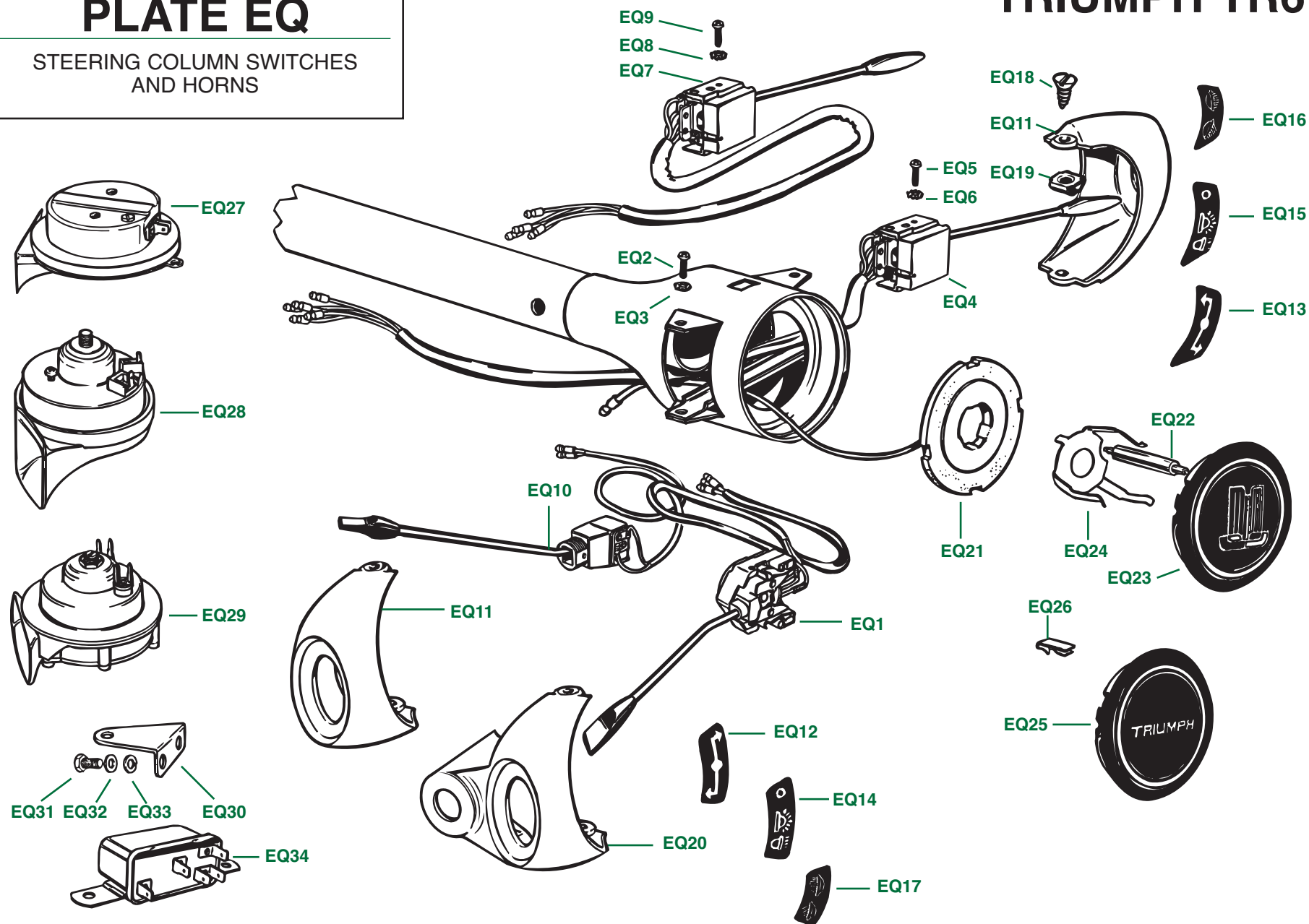
Plate No.	Part No.	Description	No. Off
SWITCHES MOUNTED ON STEERING COLUMN—Continued			
SWITCH ESCUTCHEONS			
	RFK639	SWITCH ESCUTCHEON KIT , non-overdrive models, with L.H. steering	1
	RFK640	SWITCH ESCUTCHEON KIT , non-overdrive models, with R.H. steering	1
EQ11	708479	Escutcheon , plastic, lighting and turn signal switches	2
DECALS , switch identification			
EQ12	611011	Decal Label , turn signal switch, L.H.S.	1
EQ13	611012	Decal Label , turn signal switch, R.H.S.	1
EQ14	611013	Decal Label , three-position lighting switch, L.H.S., fitted up to comm. nos. CF1 and CR1	1
EQ15	611014	Decal Label , three-position lighting switch, R.H.S., fitted up to comm. nos. CF1 and CR1	1
EQ16	621968	Decal Label , dimmer switch, L.H.S., fitted after comm. nos. CF1 and CR1	1
EQ17	621967	Decal Label , dimmer switch, R.H.S., fitted after comm. nos. CF1 and CR1	1
HARDWARE , securing plastic switch escutcheons to steering column cowl			
EQ18	508051	Screw , self-tapping, chromed	2
EQ19	FC2803	Fix , spire	1
	RFK641	SWITCH ESCUTCHEON KIT , overdrive models with L.H. steering	1
	RFK642	SWITCH ESCUTCHEON KIT , overdrive models with R.H. steering	1
EQ20	611974	Escutcheon , turn signal switch and overdrive switch	1
	708479	Escutcheon , lighting switch	1
DECALS , switch identification			
	611011	Decal Label , turn signal switch, L.H.S.	1
	611012	Decal Label , turn signal switch, R.H.S.	1
	611013	Decal Label , three-position lighting switch, L.H.S., fitted up to comm. nos. CF1/CR1	1
	611014	Decal Label , three-position lighting switch, R.H.S., fitted up to comm. nos. CF1/CR1	1
	621968	Decal Label , dimmer switch, L.H.S., fitted after comm. nos. CF1/CR1	1
	621967	Decal Label , dimmer switch, R.H.S., fitted after comm. nos. CF1/CR1	1
HARDWARE , securing plastic switch escutcheons to steering column cowl			
	508051	Screw , self-tapping, chromed	2
	FC2803	Fix , spire	2

(Continued on next page.)

PLATE EQ

STEERING COLUMN SWITCHES
AND HORNS

TRIUMPH TR6



STEERING COLUMN SWITCHES AND HORNS

Plate No.	Part No.	Description	No. Off
HORN SWITCH DETAILS			
EQ21	608462	Slip-Ring and Insulator Assembly, with wire lead HORN BRUSHES (HORN CONTACT TUBES); check details given below against old brush, and order accordingly	1
EQ22	143760	Brush , horn button contact; plastic tube has length of 1-11/16-inches; apparently fitted up to comm. nos. CC50000 and CP50000	1
	108657	Brush , horn button contact; plastic body has length of 2 1/2-inches; apparently fitted after comm. nos. CC50000 and CP50000	1
		HORN BUTTON DETAILS , fitted up to comm. no. CF1 and CR1	1
EQ23	150277	Horn Push Assembly , with shield-emblem motif	1
EQ24	204741	Clip , three-legged, securing horn push assembly to center of steering wheel	1
		HORN BUTTON DETAILS , fitted after comm. no. CF1 and CR1	
EQ25	159761	Horn Push Assembly , with TRIUMPH-word motif	1
EQ26	613766	Clip , securing horn push assembly to center of steering wheel	2
HORN DETAILS			
ORIGINAL PART NUMBERS			
Please Note: Original part numbers are given for reference, along with locations on the car if available, although all original horns are discontinued by their manufacturers at the time of writing.			
HORNS WITH HIGHER NOTES			
EQ27	148623/1	Horn , "super post," Clear Hooters brand, fitted to front bumper bracket; side of car is not specified, early 1969 models only	1
EQ28	148623/2	Horn , very high note Lucas-brand alternative to previous listing, fitted to front bumper bracket; side of car is not specified, early 1969 models only	1
	152764	Horn , "super post," Clear Hooters brand, fitted to R.H. front bumper bracket, fitted from comm. nos. CC50000 and CP50000 up to CC75000 and CP75000	1
	158140	Horn , high note, Clear Hooters brand, fitted to front bumper bracket; side of car is not specified; fitted after comm. nos. CC75000 and CP75000	1
	UKC5339	Horn , high note, Lucas-brand alternative to previous listing, fitted to L.H. front bumper bracket, fitted after comm. nos. CF35000	1

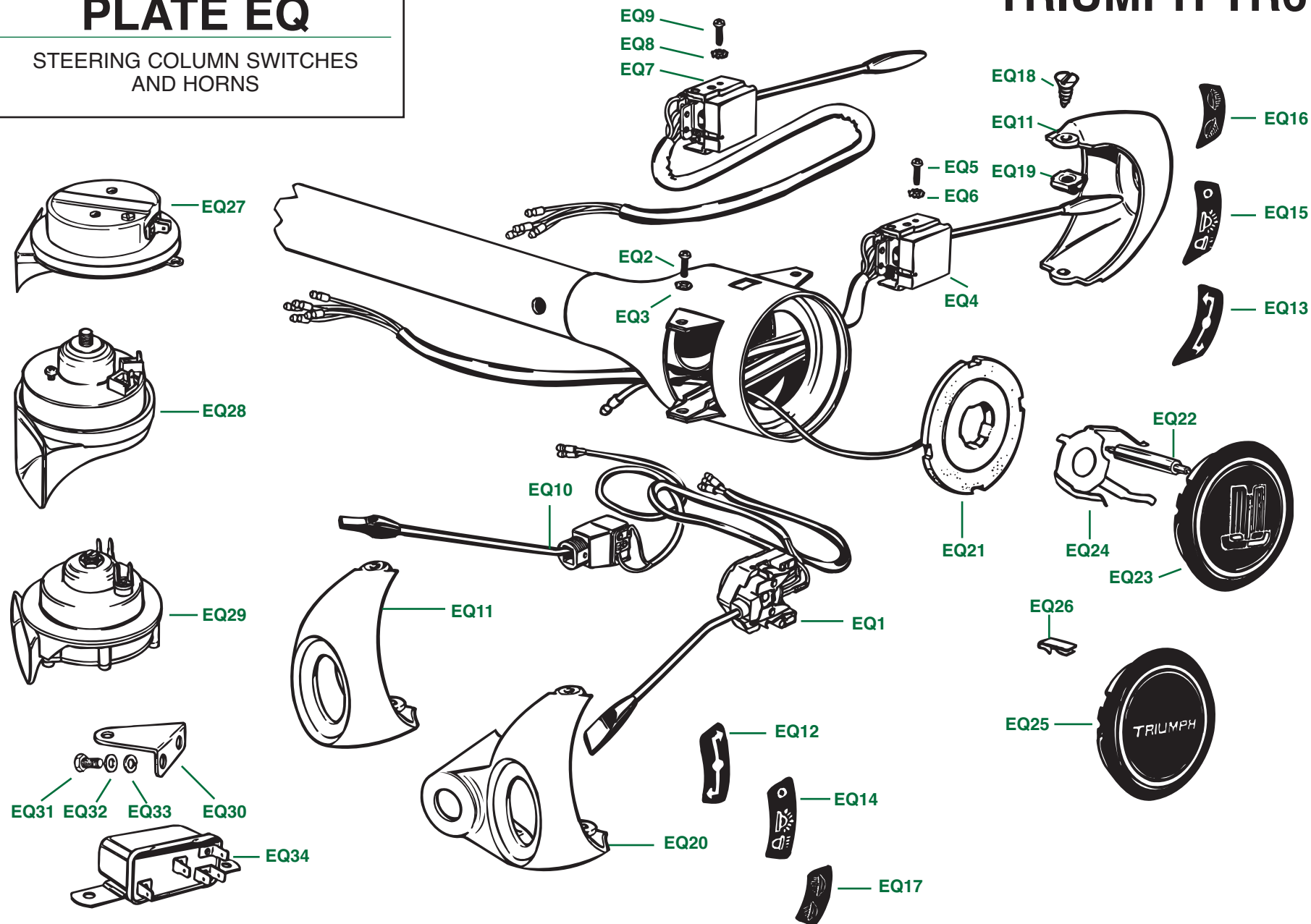
Plate No.	Part No.	Description	No. Off
HORN DETAILS—Continued			
ORIGINAL PART NUMBERS—Continued			
HORNS WITH LOWER NOTES			
	148622/1	Horn , "post," Clear Hooters brand, fitted to front bumper bracket; side of car is not specified early 1969 models only	1
	148622/2	Horn , high note, Lucas brand alternative to previous listing, fitted to front bumper bracket; side of car is not specified, early 1969 models only	1
	152763	Horn , "post," Clear Hooters brand, fitted to L.H. front bumper bracket, fitted from comm. nos. CC50000 and CP50000 up to CC75000 and CP75000	1
	158139	Horn , low note, Clear Hooters brand, fitted to front bumper bracket; side of car is not specified; fitted after comm. nos. CC75000 and CP75000	1
	UKC5340	Horn , low note, Lucas-brand alternative to previous listing, fitted to R.H. front bumper bracket, after comm. nos. CF35000	1
REPLACEMENT HORNS			
Please Note: Clear Hooters is apparently no longer in business, and Lucas has discontinued all horns originally fitted to the TR6 models. Currently available Lucas horns and currently available Unipart horns are listed below, along with part numbers which we shall use if more desirable replacements become available as time goes on.			
LUCAS REPLACEMENT HORNS , available at the time of writing			
EQ29	LUSHB123	Horn , high note, Lucas brand, red plastic construction, compatible with original brackets and wiring	1
	LUSHB122	Horn , low note, Lucas brand, red plastic construction; compatible with original brackets and wiring	1
UNIPART REPLACEMENT HORNS , available at the time of writing			
	GGE103	Horn , high note, Unipart brand, black plastic construction, not compatible with original brackets and wiring	1
	GGE104	Horn , low note, Unipart brand, black plastic construction, not compatible with original brackets and wiring	1
TRF-APPROVED REPLACEMENT HORNS; check price list for future availability			
	SLP174	Horn , high note; "original" appearance; compatible with original brackets and wiring	1
	SLP175	Horn , low note; "original" appearance; compatible with original brackets and wiring	1

(Continued on next page.)

PLATE EQ

STEERING COLUMN SWITCHES
AND HORNS

TRIUMPH TR6



STEERING COLUMN SWITCHES AND HORNS

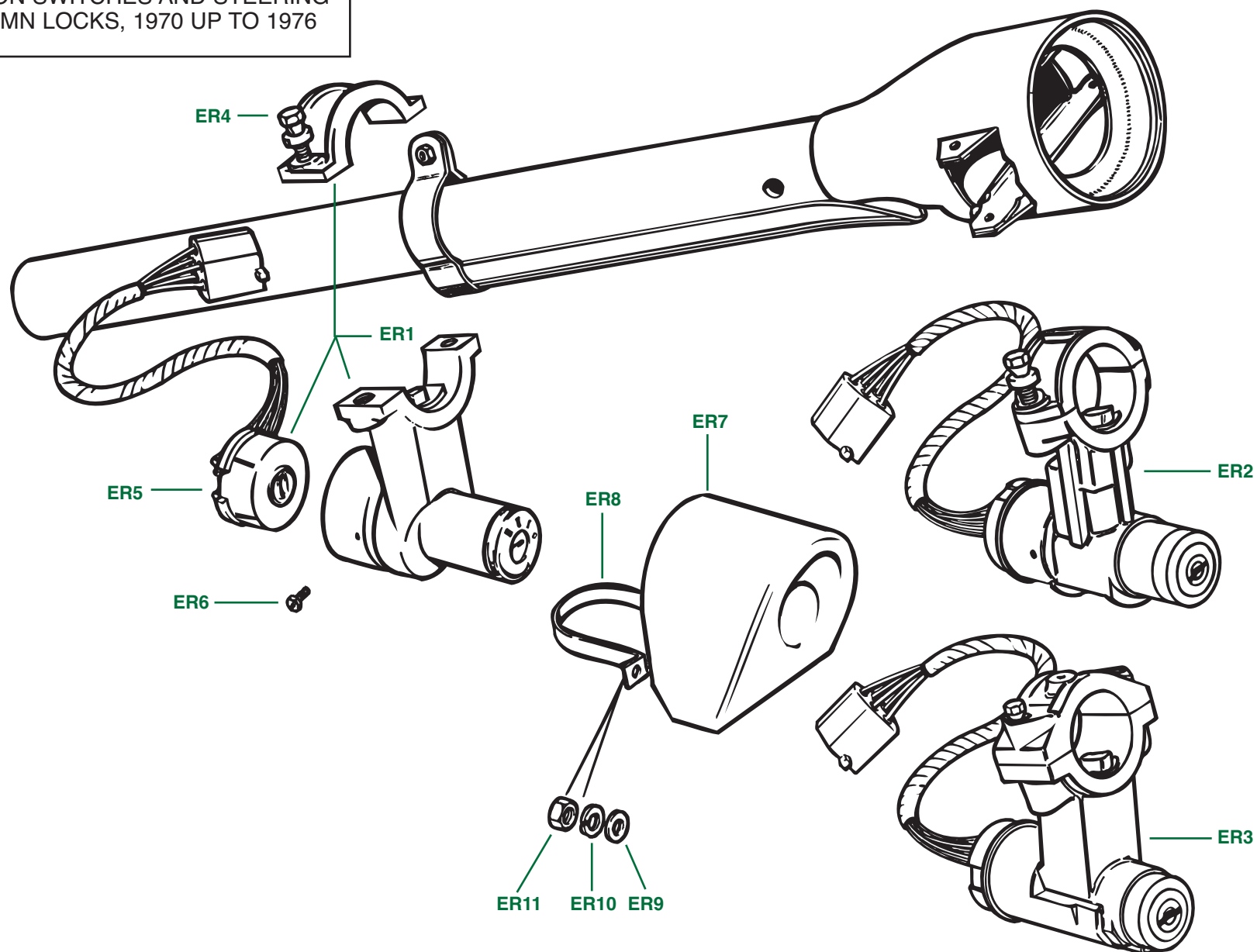
Plate No.	Part No.	Description	No. Off
		HORN DETAILS —Continued	
		HORN MOUNTING COMPONENTS	
	RFK646	HORN MOUNTING KIT , securing horns to front bumper brackets	2
EQ30	148624	Bracket , horn mounting	2
		HARDWARE , securing horn-mounting brackets to front bumper brackets	1
EQ31	HU704	Screw , set	4
EQ32	WL207	Washer , lock	4
EQ33	WP7	Washer , plain	4
		HORN RELAYS	
EQ34	150613	Horn Relay , fitted to early 1970 models; quote Lucas part no. on original relay if possible when ordering	1
	126792	Horn Relay , fitted to all models after early 1970; quote Lucas part no. on original relay if possible when ordering	1

Plate No.	Part No.	Description	No. Off
-----------	----------	-------------	---------

PLATE ER

IGNITION SWITCHES AND STEERING
COLUMN LOCKS, 1970 UP TO 1976

TRIUMPH TR6



IGNITION SWITCHES AND STEERING COLUMN LOCKS, 1970 UP TO 1976

Plate No.	Part No.	Description	No. Off
		<p>Please Note: Early ignition and starter switches, which were mounted beside the choke control on the heater switch plinth, are listed in Section EM. Ignition and starter switches with steering column locks were fitted to U.S. and German models beginning in 1970. They were fitted to models for some other markets at different times, and they may have been optional prior to 1970.</p> <p>IGNITION AND STARTER SWITCHES AND STEERING COLUMN LOCKS, U.S. models</p>	
	132135	SWITCH AND LOCK ASSEMBLY , for use wherever steering locking is fitted up to comm. no. CC50000	1
	216446	SWITCH AND LOCK ASSEMBLY , U.S. models, fitted from comm. no. CC50000 up to CF1	1
	219061	SWITCH AND LOCK ASSEMBLY , Waso brand, U.S. models, fitted from comm. no. CF1 up to CF12500 approx.	1
ER1	UKC2720/1	SWITCH AND LOCK ASSEMBLY , Waso brand, U.S. models, fitted after comm. no. CF12500 approx.	1
ER2	UKC2720/2	SWITCH AND LOCK ASSEMBLY , Wilmot Breeden brand, U.S. models, fitted after comm. no. CF12500 approx.; alternative to part no. UKC2720/1	1
ER3	UKC2720/3	SWITCH AND LOCK ASSEMBLY , only available replacement at the time of writing; OEM manufacturer; supplied for all replacements	1
ER4	519188	Screw , torque-head, clamping switch and lock assembly to outer steering column	2
		<p>Please Note: The only available switch and lock assembly may vary slightly in design from the component originally fitted to your car. We do not want you to attempt modifications to your car which are beyond your capabilities. This is a safety critical component, and you must realize that your safety and that of your passengers is in your hands. If you find that you are out of your depth, please call our technical help line, or seek other professional assistance. We will accept this item back for a full refund if you cannot use it, provided that it is in "as-new" condition.</p> <p>Please Note: A free electrical component is included with the replacement switch and lock assembly listed above. If this generic electrical component does not fit your car, you must either re-use your old one or purchase a new electrical component from the list below.</p>	

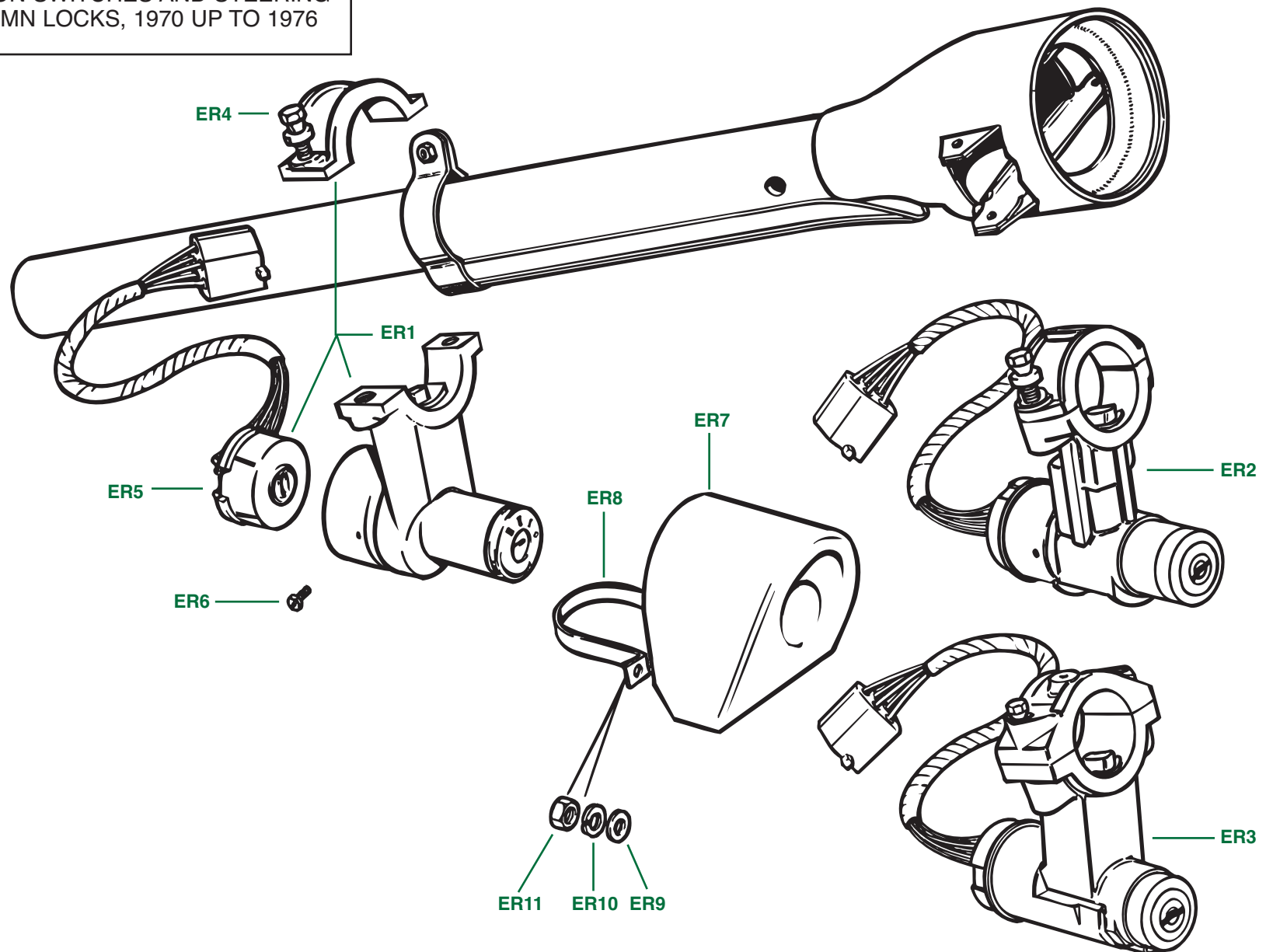
Plate No.	Part No.	Description	No. Off
		IGNITION AND STARTER SWITCHES AND STEERING COLUMN LOCKS, all models except U.S."	
	132135	SWITCH AND LOCK ASSEMBLY , for use anywhere steering locking is fitted up to comm. no. CP50000	1
	216449/1	SWITCH AND LOCK ASSEMBLY , Waso brand, all models except U.S., fitted from comm. no. CP52000 approx. up to CR5000 approx.	1
	216449/2	SWITCH AND LOCK ASSEMBLY , Wilmot Breeden brand, all models except U.S., fitted from comm. no. CP52000 approx. up to CR5000 approx.; alternative to part no. 216449/2	1
	UKC2719/1	SWITCH AND LOCK ASSEMBLY , Waso brand, all models except U.S., fitted after comm. no. CR5000 approx.	1
	UKC2719/2	SWITCH AND LOCK ASSEMBLY , Wilmot Breeden brand, all models except U.S., fitted after comm. no. CR5000 approx.; alternative to part no. UKC2719/1	1
	UKC2720/3	SWITCH AND LOCK ASSEMBLY , only available replacement at the time of writing; OEM manufacturer; supplied for all replacements	1
	519188	Screw , torque-head, clamping switch and lock assembly to outer steering column	2
		<p>Please Note: The only available switch and lock assembly may vary slightly in design from the component originally fitted to your car. We do not want you to attempt modifications to your car which are beyond your capabilities. This is a safety critical component, and you must realize that your safety and that of your passengers is in your hands. If you find that you are out of your depth, please call our technical help line, or seek other professional assistance. We will accept this item back for a full refund if you cannot use it, provided that it is in "as-new" condition.</p> <p>Please Note: A free electrical component is included with the replacement switch and lock assembly listed above. If this generic electrical component does not fit your car, you must either re-use your old one or purchase a new electrical component from the list below.</p>	

(Continued on next page.)

PLATE ER

IGNITION SWITCHES AND STEERING
COLUMN LOCKS, 1970 UP TO 1976

TRIUMPH TR6



IGNITION SWITCHES AND STEERING COLUMN LOCKS, 1970 UP TO 1976

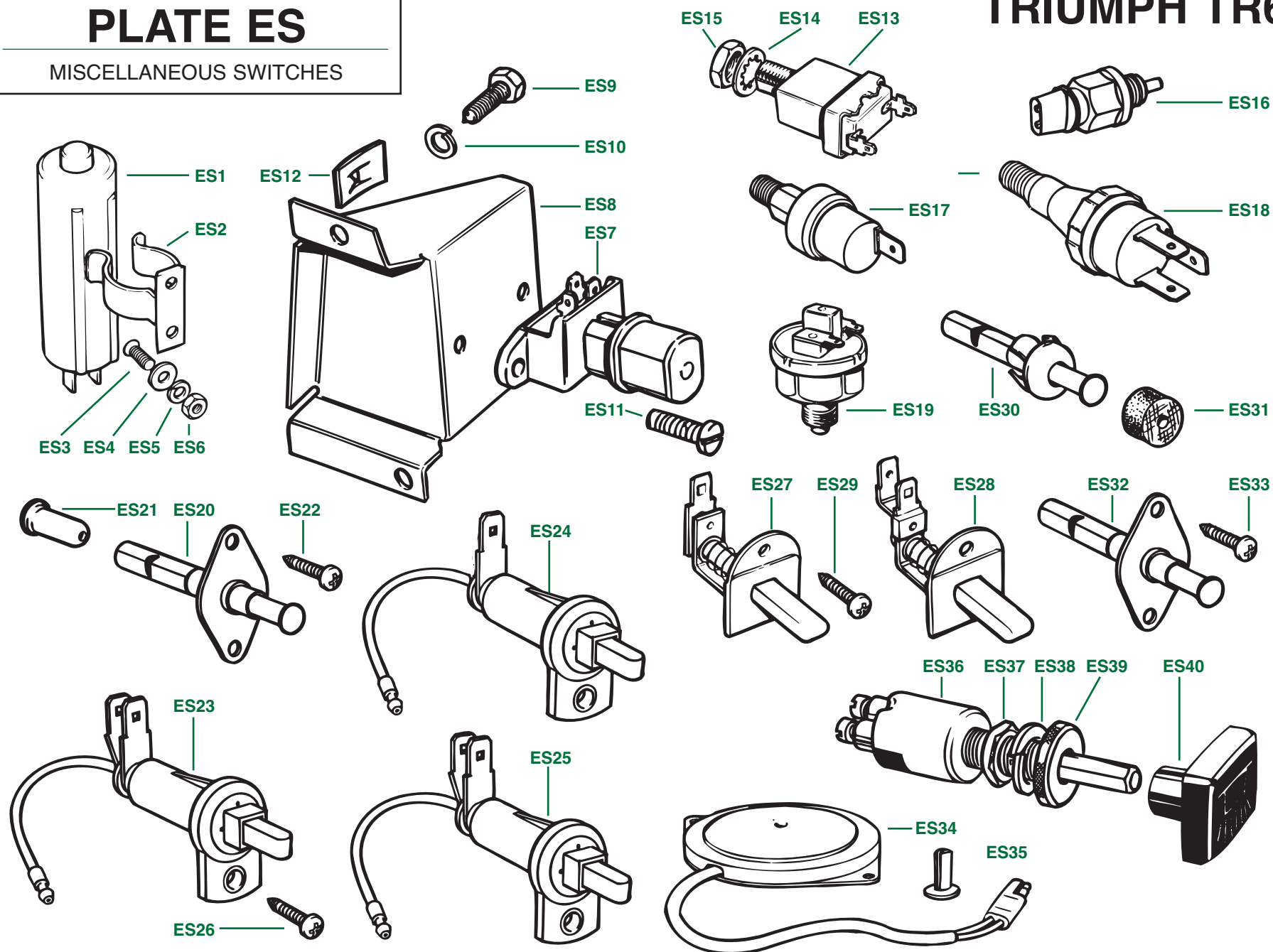
Plate No.	Part No.	Description	No. Off
IGNITION SWITCHES AND STEERING COLUMN LOCKS, 1970 UP TO 1976			
ELECTRICAL SWITCH COMPONENTS			
Please Note: Information on electrical switch components is sketchy and incomplete. The components listed in this section are the ones which we have encountered during our years of experience. Before ordering, you should check the Lucas part number on your old component. To do this, you must remove one screw which retains the electrical component in the switch and lock assembly. You will find the five-digit Lucas part number, usually with an alphabetical prefix, on the plastic body of the component. If the Lucas part number on your old electrical component is different from any of the numbers given below, please telephone our technical help line for assistance.			
ER5	LU30399	Electrical Switch Component , Lucas part no. 30399	1
	LU39415	Electrical Switch Component , Lucas part no. 39415	1
	LU39911	Electrical Switch Component , Lucas part no. 39911	1
ER6	SLP168	Screw , securing switch component in barrel of switch and lock housing	1
CRASH PROTECTION DETAILS			
ER7	718813	Cover , protection, switch and lock assembly	1
ER8	627340	Strap , securing protection cover to switch and lock assembly, for Waso brand switch and lock assemblies	1
	UKC894	Strap , securing protection cover to switch and lock assembly, for Wilmot Breeden brand switch and lock assemblies	1
HARDWARE , securing strap to protection cover			
ER9	WP5	Washer , plain	2
ER10	WL205	Washer , lock	2
ER11	503627	Nut , hex	2

Plate No.	Part No.	Description	No. Off
-----------	----------	-------------	---------

PLATE ES

MISCELLANEOUS SWITCHES

TRIUMPH TR6



MISCELLANEOUS SWITCHES

Plate No.	Part No.	Description	No. Off
		INERTIA CUT-OFF SWITCH DETAILS , fitted to P.I. models only, after body no. 51399CP (R.H.S.) and 52328CP (L.H.S.)	
ES1	153052	Switch , inertia, shutting off fuel pump in case of collision	1
	UKC1866	Switch , inertia, alternative to part no. 153052 after comm. no. CR5000	1
ES2	153109	Clip , mounting inertia cut-off switch to bulkhead	1
		HARDWARE , securing mounting clip to L.H. side of bulkhead	1
ES3	KX4504	Screw , set, countersunk head	2
ES4	WP5	Washer , plain	2
ES5	WL205	Washer , lock	2
ES6	HN2005	Nut , hex	2
		HEADLAMP DIMMER SWITCH DETAILS ; foot-operated switch fitted up to comm. nos. CF1 and CR1	
ES7	LU34790	Switch , headlamp dimmer, foot operated	1
		MOUNTING DETAILS , headlamp dimmer switch, models with L.H. steering	1
ES8	609384	Bracket , mounting dimmer switch	1
		HARDWARE , securing bracket to L.H. bulkhead end panel	
ES9	HU705P	Screw , set	2
ES10	WL207	Washer , lock	2
		HARDWARE , securing switch to bracket	
ES11	YJ2505	Screw , self-tapping	2
ES12	FN2045/4	Nut , fix	2
		HARDWARE , blanking holes in bulkhead for models with R.H. steering	1
	HU505	Screw , set	2
	WP138	Washer , plain	2
		HARDWARE , securing switch to bulkhead center panel, models with R.H. steering	
	506731	Screw , set	2
	505260	Washer , lock	2
		STOP LAMP SWITCH DETAILS	
ES13	LU34933	Switch , stop lamp	1
		HARDWARE , securing stop lamp switch to pedal mounting box	
ES14	WN711	Washer , shakeproof	1
ES15	JN2111	Nut , jam	1
ES16	GI64677381	Switch , warning, brake failure, fitted only to models with L.H. steering	1

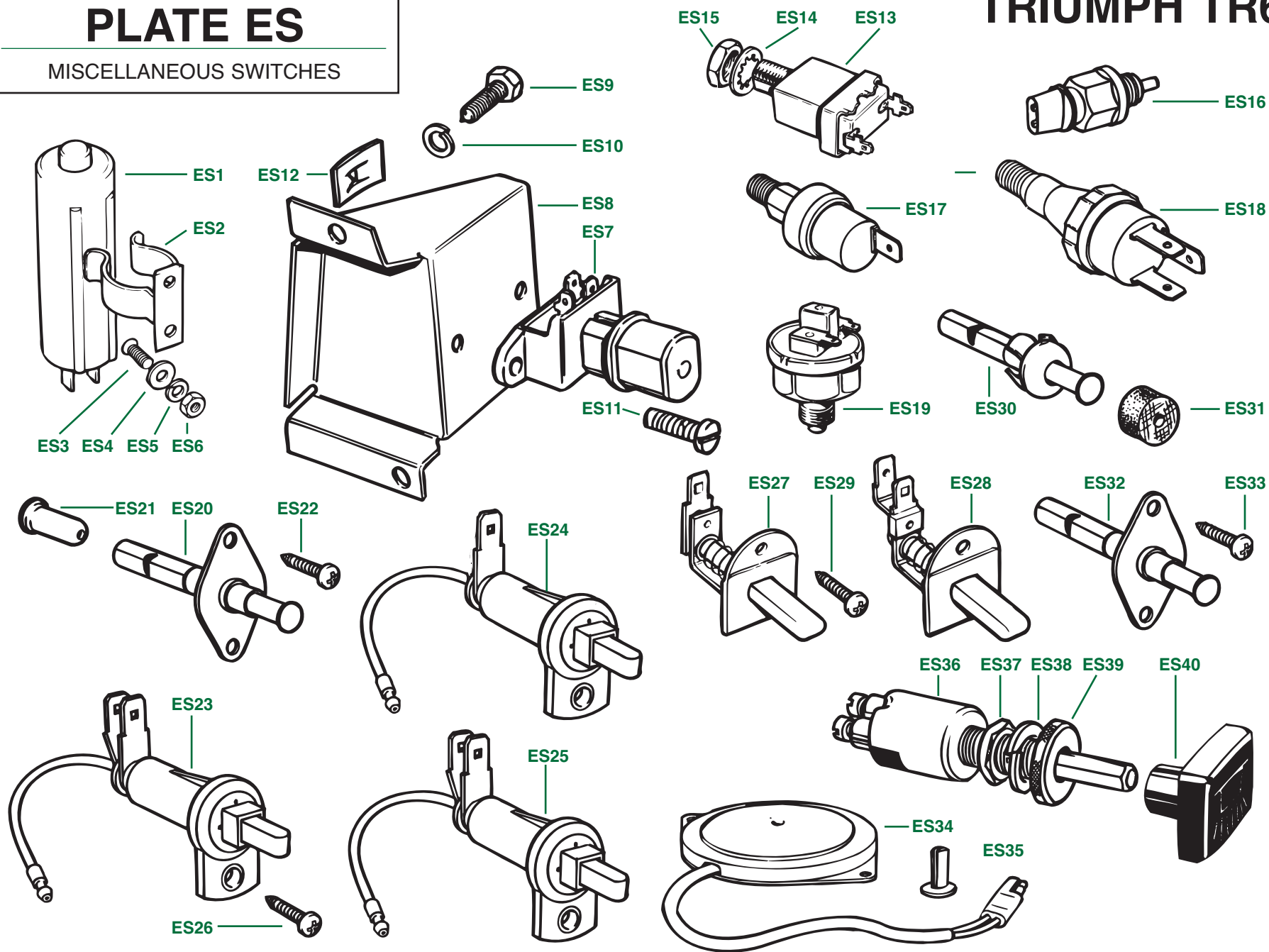
Plate No.	Part No.	Description	No. Off
		OIL PRESSURE WARNING SWITCHES	
ES17	121398	Switch , oil pressure warning lamp, one terminal, fitted to all P.I. models	1
	121398	Switch , oil pressure warning lamp, one terminal, fitted to carb models up to engine no. CF1UE	1
ES18	159784	Switch , oil pressure warning lamp, three terminals, fitted to carb models after engine no. CF1UE	1
		back up LAMP SWITCHES , fitted to gearbox top cover	
ES19	127380	Switch , back up lamps, fitted up to comm. nos. CF1 and CR1	1
	UKC930	Switch , back up lamps, fitted from comm. nos. CF1 and CR1 up to ?	1
	UKC7882	Switch , back up lamps, fitted to very late models	1
		COURTESY LAMP SWITCHES AND MOUNTING DETAILS	
		COURTESY SWITCH DETAILS , fitted up to comm. nos. CC50000 and CP50000	
ES20	625561	Switch , tunnel lamp, fitted to door posts	2
ES21	605953	Sleeve , terminal, connecting wiring leads to switches	2
ES22	YZ3304	Screw , self-tapping, securing switches to front door posts	4
		COURTESY SWITCH DETAILS , fitted from comm. nos. CC50000 and CP50000 up to CF12500 and CR5000 approx.	
ES23	627742	Switch , tunnel lamp, fitted to all models except U.S.A.	2
ES24	627748	Switch , courtesy lamps and audible warning buzzer, fitted in L.H. door post, U.S.A. models	1
ES25	627742	Switch , courtesy lamps, fitted in R.H. door post, U.S.A. models	1
ES26	YZ3304	Screw , self-tapping, securing switches to door posts	2
		COURTESY SWITCH DETAILS , fitted after comm. nos. CF12500 and CR5000 approx.	
ES27	YKC940	Switch , courtesy lamps; red plunger, single terminal; fitted to all models, both sides	2
ES28	YKC932	Switch , courtesy lamps; black plunger, double terminal; fitted to U.S.A. models, driver's side only	1
	YKC931	Switch , courtesy lamps; red plunger, double terminal; alternative to part no. YKC932	1
ES29	YZ3304	Screw , self-tapping, securing switches; one req. for each switch	A/R
		GLOVE BOX LAMP SWITCH DETAILS	
ES30	619071	Switch , glovebox lamp; pressed into hole in steel dash back panel	1
ES31	631001	Buffer , rubber, glove box lid, fitted to plunger on switch	1
	152025	Sleeve , P.V.C., fitted over purple and white wire from glove box light to switch before connecting wire to switch	1

(Continued on next page.)

PLATE ES

MISCELLANEOUS SWITCHES

TRIUMPH TR6



MISCELLANEOUS SWITCHES

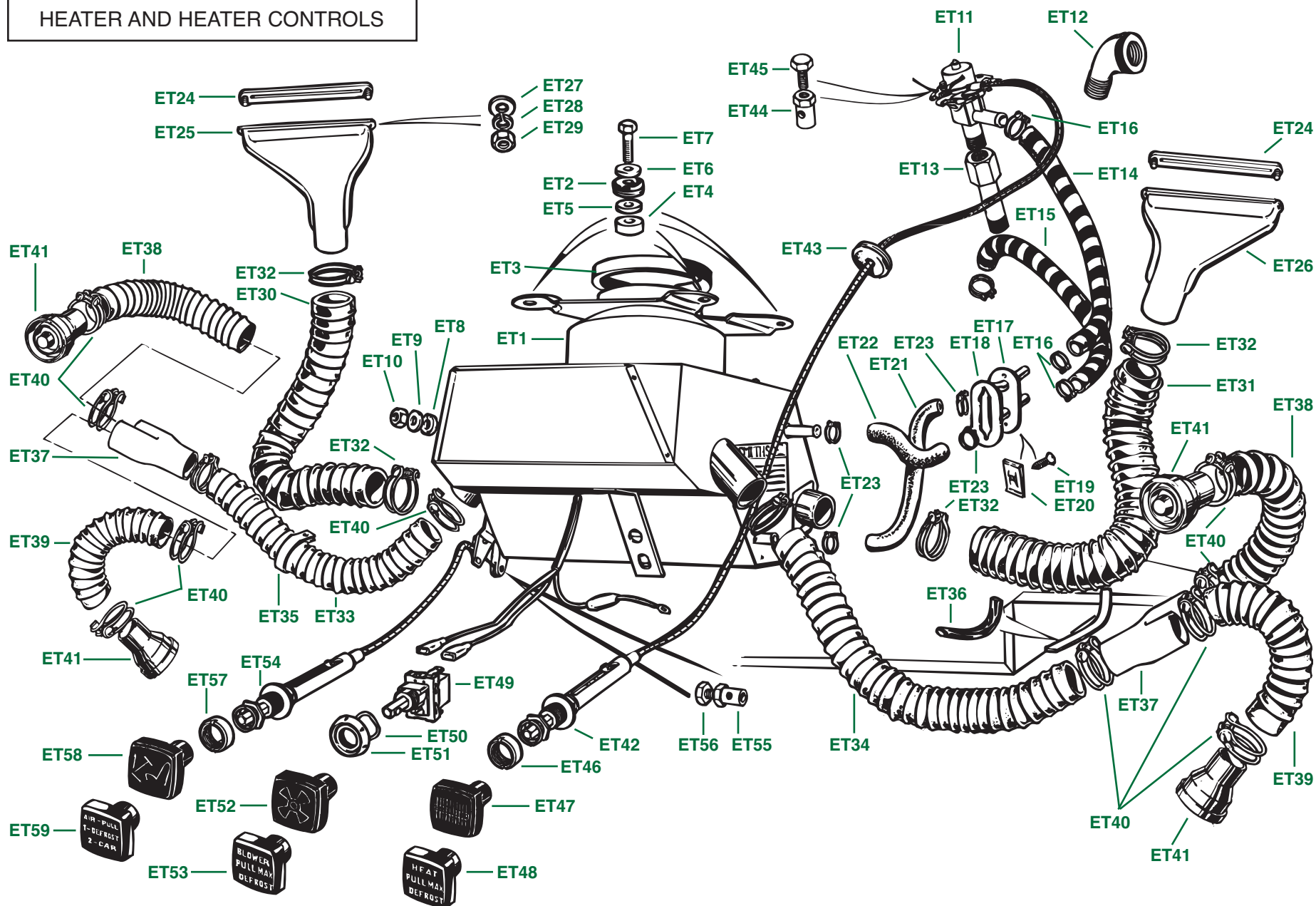
Plate No.	Part No.	Description	No. Off
TRUNK LAMP SWITCH DETAILS			
ES32	625561	Switch , trunk lamp	1
ES33	YZ3304	Screw , self-tapping, securing trunk lamp switch to trunk compartment	1
SEAT SENSOR SWITCH DETAILS			
ES34	158534	Switch , seat sensor; fitted as required for respective model years, U.S.A. models only	A/R
ES35	RB5208	Rivet , securing seat sensor switches to seat diaphragms (two req. for each switch)	A/R
INTERIOR LAMP SWITCH , fitted after comm. nos. CF1 and CR1; mounted on dash support			
ES36	LU34623	Switch , interior lamps	1
ES37	510396	Nut , jam, securing switch	1
ES38	128089	Washer , lock, securing switch	1
ES39	609333	Bezel , chromed, interior lamp switch	1
ES40	712905	Knob , interior lamp switch	1

Plate No.	Part No.	Description	No. Off
-----------	----------	-------------	---------

PLATE ET

HEATER AND HEATER CONTROLS

TRIUMPH TR6



HEATER AND HEATER CONTROLS

Plate No.	Part No.	Description	No. Off
ET1	812301	HEATER ASSEMBLY	1
	521080	Motor , heater	1
	512365	Fan , heater motor	1
	RFK647	HARDWARE KIT , securing heater assembly to body shell (to plenum chamber and to bulkhead)	1
		HARDWARE , securing heater assembly to plenum chamber	
ET2	SLP176	Grommet , rubber, fitted to heater flange	3
ET3	SLP177	Rubber Seal , fan housing to plenum chamber	1
ET4	566374	Spacer	3
ET5	566375	Washer , plain	3
ET6	WP167	Washer , plain	3
ET7	HB708	Bolt	3
		HARDWARE , securing heater assembly to bulkhead	
ET8	612241	Washer , rubber	1
ET9	566581	Washer , plain	1
ET10	HN2007	Nut , hex	1
		WATER VALVE DETAILS	
ET11	565755	Water Valve Assembly	1
ET12	133061	Adaptor , water valve, angled type, possibly fitted only to early P.I. models	1
ET13	148435	Adaptor , water valve, straight type, fitted to carb models and possibly to later P. I. models	1
		WATER HOSE DETAILS	
ET14	622141	Hose , yellow and black, heater inlet	1
	627310	Hose , green, heater inlet	1
ET15	622158	Hose , yellow and black, heater outlet	1
	627311	Hose , green, heater outlet	1
ET16	CS4012	Clip , hose, wire type	4
	CS4013	Clip , hose, wire type (alternative to CS4012)	4
	CJ4014	Clip , hose, worm-gear type (alternative to CS4012 and CS4013)	4
ET17	611043	Connection , bulkhead, heater hoses	1
ET18	611040	Gasket , rubber, connection to bulkhead	1
		HARDWARE , securing bulkhead connection and gasket to bulkhead	
ET19	YJ2464	Screw , self-tapping	2
ET20	FU2544	Nut , spire	2
ET21	623284	Hose , black, heater inlet	1
ET22	623285	Hose , black, heater outlet	1
ET23	CS4012	Clip , hose, wire type	4
	CS4013	Clip , hose, wire type (alternative to CS4012)	4
	CJ4014	Clip , hose, worm-gear type (alternative to CS4012 and CS4013)	4

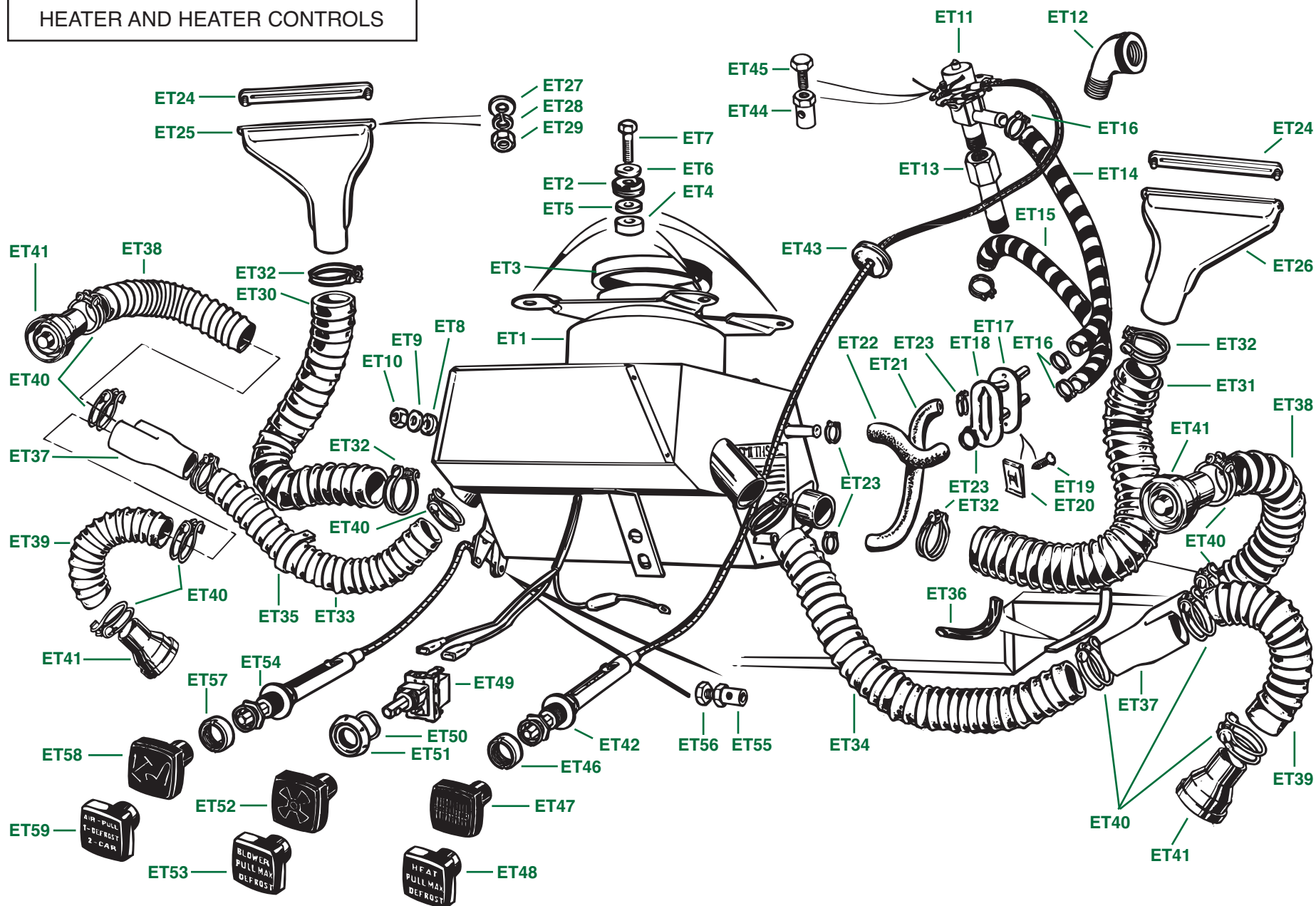
Plate No.	Part No.	Description	No. Off
		DEMISTER DETAILS	
ET24	610181	Demister Bezel Assembly	2
ET25	806740	Demister Duct Assembly , L.H.	1
ET26	806741	Demister Duct Assembly , R.H.	1
		HARDWARE , securing ducts and bezels to dash top panel	
ET27	WP138	Washer , plain	4
ET28	WL205	Washer , lock	4
ET29	HN2005	Nut	4
ET30	602636	Hose , heater to air duct, L.H. (1.5-inch hose, 11.5-inches long)	1
ET31	602638	Hose , heater to air duct, R.H. (1.5-inch hose, 13.5-inches long)	1
ET32	CS4024	Clip , hose, securing air hoses to heater and to air ducts	4
ET33	614342	Hose , heater to 3-way connection, driver's side (1.75-inch hose, 14-inches long), fitted up to comm. nos. "?"	1
	715034	Hose , heater to 3-way connection, driver's side (1.75-inch hose, 14-inches long), fitted after comm. nos. "?"	1
		DEMISTER DETAILS—Continued	
ET34	614343	Hose , heater to 3-way connection, passenger's side (1.75-inch hose, 18-inches long), fitted up to comm. nos. "?"	1
	715031	Hose , heater to 3-way connection, passenger's side (1.75-inch hose 18-inches long), fitted after comm. nos. "?"	1
ET35	622151	Clamp , L.H. side only	1
ET36	575015	Sleeve , P.V.C., protecting hose	1
ET37	622138	Connection , 3-way	2
ET38	614340	Hose , 3-way connection to dash louvres, (1.75-inch hose, 7.5-inches long), fitted up to comm. nos. "?"	2
	715032	Hose , 3-way connection to dash louvres, (1.75-inch hose, 7.5-inches long), fitted after comm. nos. "?"	2
ET39	614341	Hose , 3-way connection to foot-level louvres, (1.75-inch hose, 11.5-inches long), fitted up to comm. nos. "?"	2
	715033	Hose , 3-way connection to foot-level louvres (1.75-inch hose, 11.5-inches long), fitted after comm. nos. "?"	2
ET40	CS4030	Clip , hose, securing 1.75-inch hoses to heater, to 3-way connections, and to louvres	12
ET41		Louvres , dash and foot-level are listed in Section FW	1

(Continued on next page)

PLATE ET

HEATER AND HEATER CONTROLS

TRIUMPH TR6



HEATER AND HEATER CONTROLS

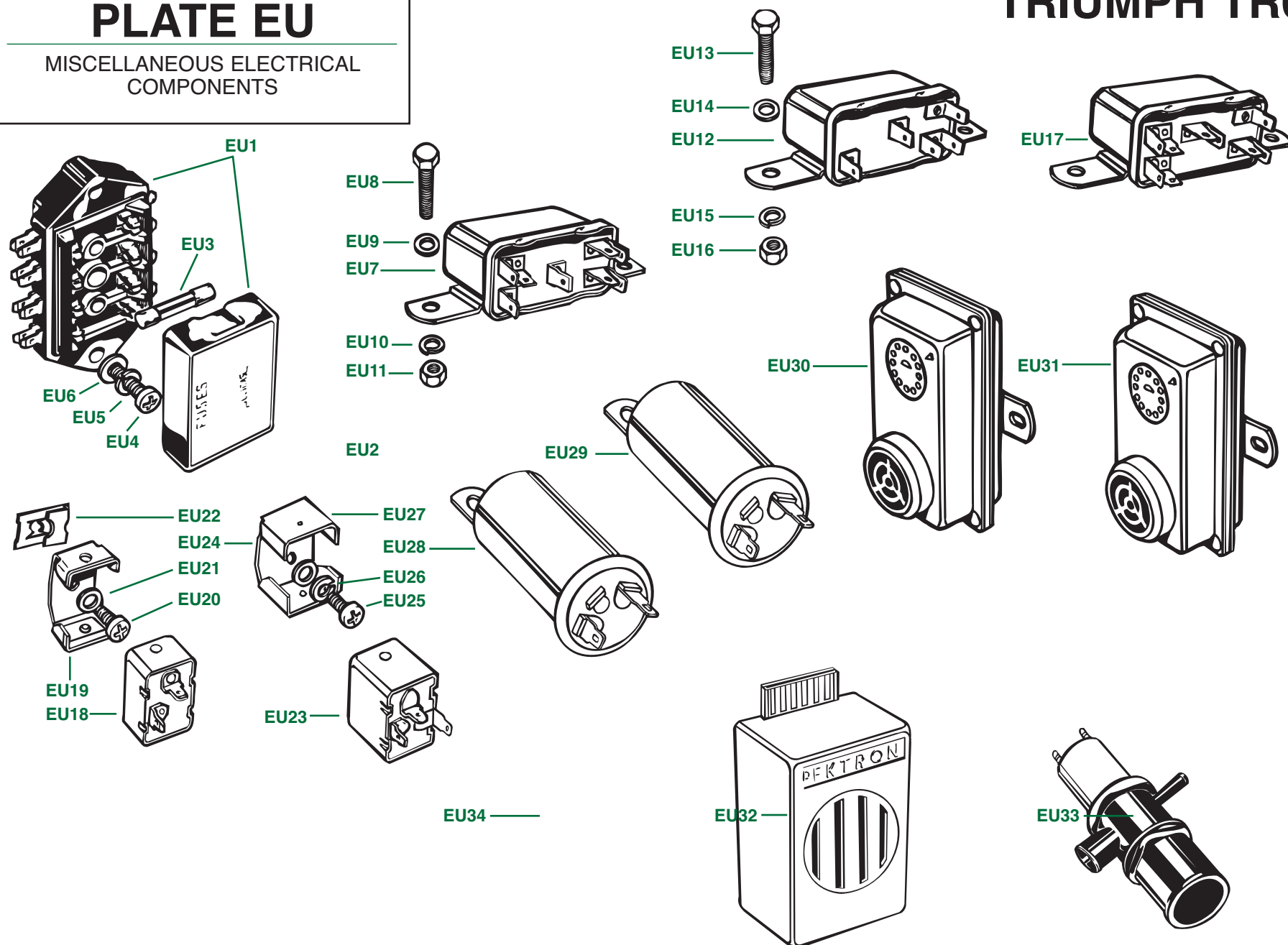
Plate No.	Part No.	Description	No. Off
HEATER CONTROLS			
WATER VALVE CONTROL			
ET42	622361	Cable Assembly , water control valve	1
ET43	602037	Grommet , rubber, sealing cable to bulkhead	1
		HARDWARE , securing inner cable to valve	
ET44	609123	Fitting , trunnion	1
ET45	559980	Screw , securing cable to fitting	1
ET46	566047	Bezel , water valve control cable	1
ET47	712903	Knob , water control cable, all models except U.S.A.	1
	712903	Knob , water control cables, U.S.A. models, fitted up to comm. no. CC75000	1
ET48	725372	Knob , water control cable, U.S.A. models, fitted after comm. no. CC75000	1
HEATER BLOWER CONTROL			
ET49	131812	Switch , heater blower	1
ET50	128089	Washer , switch mounting	1
ET51	609795	Bezel , blower switch	1
ET52	712911	Knob , blower switch, all models except U.S.A.	1
	712911	Knob , blower switch, U.S.A. models, fitted up to comm.no. CC75000	1
ET53	725371	Knob , blower switch, U.S.A. models, fitted after comm. no. CC75000	1
AIR DISTRIBUTION CONTROL			
ET54	622362	Cable Assembly , air distribution control	1
		HARDWARE , securing inner cable to lever on heater flap	
ET55	609123	Fitting , trunnion	1
ET56	559980	Screw , securing cable to fitting	1
ET57	566047	Bezel , air distribution control cable	1
ET58	712909	Knob , air distribution control cable, all models except U.S.A.	1
	712909	Knob , air distribution control cable, U.S.A. models, fitted up to comm. no. CC75000	1
ET59	725370	Knob , air distribution control cable, U.S.A. models, fitted after comm. no. CC75000	1

Plate No.	Part No.	Description	No. Off
-----------	----------	-------------	---------

PLATE EU

MISCELLANEOUS ELECTRICAL
COMPONENTS

TRIUMPH TR6



MISCELLANEOUS ELECTRICAL COMPONENTS

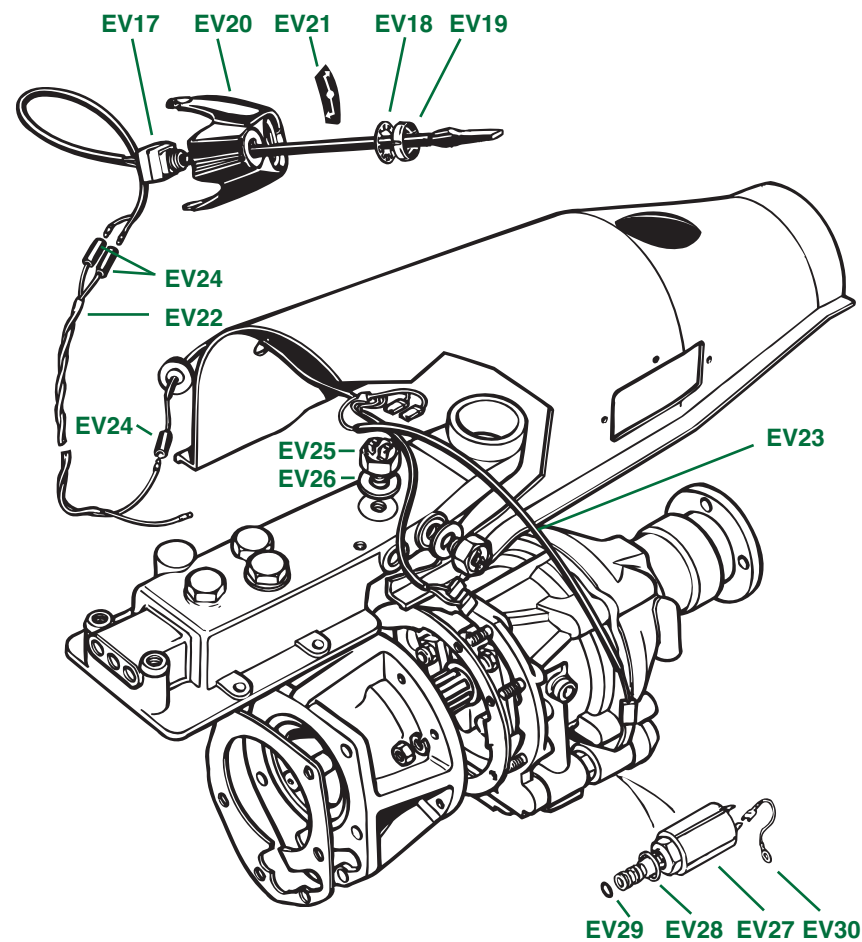
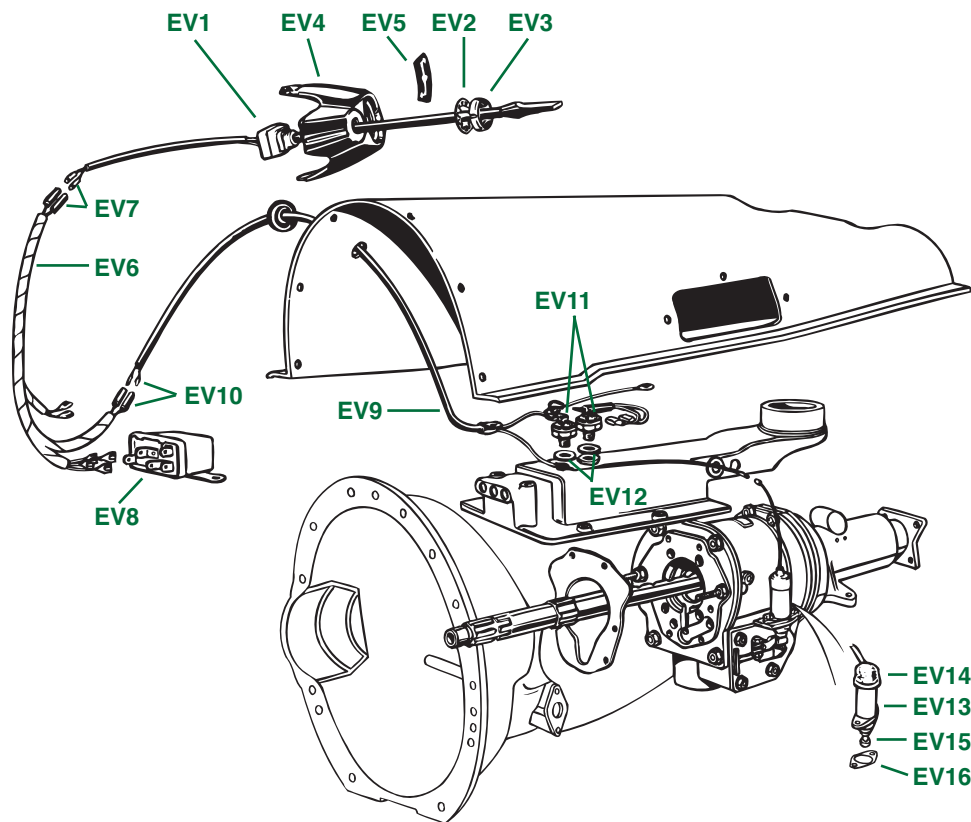
Plate No.	Part No.	Description	No. Off
FUSE BOX DETAILS			
EU1	LU37420	FUSE BOX ASSEMBLY	1
EU2	LU54382845	Cover , fuse box	1
EU3	LUF35	Fuse , 35 amp, Lucas brand (four fitted and two spares) HARDWARE , securing fuse box to L.H. front inner fender panel	A/R
EU4	PX512	Screw , set	2
EU5	WL205	Washer , lock	2
EU6	WP5	Washer , plain	2
RELAYS			
Please Note: When ordering a relay, quote the Lucas part number found on the old unit. This is usually a six-character number beginning with "3" and ending with an alphabetical suffix. Please also note that Lucas has now changed the appearance of most of its relays.			
HAZARD RELAYS , apparently fitted to all non-U.S. models with L.H.S. and to U.S. models up to comm. no. CC75000 or possibly up to comm. no. CF1			
EU7	LU33231	Relay , hazard warning system HARDWARE , securing hazard relay to mounting bracket on L.H. front inner fender panel	1
EU8	PX505	Screw , set	2
EU9	WP5	Washer , plain	2
EU10	WL205	Washer , lock	2
EU11	HN2005	Nut , hex	2
HORN RELAYS , apparently fitted to all U.S. models after comm. no. CF1 or possibly as early as CC75000			
EU12	LU33213	Relay , horn HARDWARE , securing horn relay to upper side of mounting bracket on L.H. front inner fender panel	1
EU13	PX505	Screw , set	2
EU14	WP5	Washer , plain	2
EU15	WL205	Washer , lock	2
EU16	HN2005	Nut	2
STARTER RELAYS , fitted to U.S.A. models after comm. no. CF12500			
EU17	LU33356	Relay , starter Please Note: the starter relay is secured to the mounting bracket on the L.H. front inner fender panel with the same hardware which secures the horn relay.	1

Plate No.	Part No.	Description	No. Off
TURN SIGNAL FLASHERS			
EU18	LU35048	Flasher Unit	1
EU19	148621	Bracket , mounting flasher unit HARDWARE , securing bracket to bulkhead end panel on passenger's side of car	1
EU20	YA304	Screw , self-tapping	1
EU21	WP5	Washer , plain	1
EU22	FJ2463/4	Clip , spire, fitted to slot in bulkhead end panel	1
HAZARD FLASHERS , fitted to models with left-hand steering			
EU23	LU54362147	Flasher Unit , fitted up to comm. no. CC75000	1
	LU35053	Flasher Unit , fitted after comm. no. CC75000	1
EU24	148621	Bracket , mounting flasher unit HARDWARE , securing bracket to L.H. inner front fender beside fuse box	1
EU25	PX505	Screw , set	1
EU26	WL205	Washer , lock	1
EU27	WP5	Washer , plain	1
BUZZERS AND CONTROL UNITS , seat belts and ignition interlock, U.S.A. models			
EU28	153966	Buzzer , ignition warning, fitted from comm. no. CC50000 up to CC75000	1
EU29	158509	Buzzer , ignition and seat belt warning, fitted from comm. no. CC75000 up to CF12500	1
EU30	TKC734	Control Unit , seat belt interlock and ignition warning, fitted from comm. no. CF12500 up to CF36177	1
EU31	TKC2693	Control Unit , seat belt interlock and ignition warning, fitted from comm. no. CF36177 up to CF50000	1
EU32	AAU110	Control Unit , seat belt and ignition warning, fitted after comm. no. CF50000	1
EU33	LU76568	Anti Run-On Valve and Switch Assembly ; part of pollution control system, fitted to U.S.A. models after comm. no. CF1 (See Section BH for related details.)	1
TERMINAL BLOCK			
EU34	150640	Terminal Block , fitted up to 1971	1

PLATE EV

OVERDRIVE ELECTRICAL

TRIUMPH TR6



OVERDRIVE ELECTRICAL

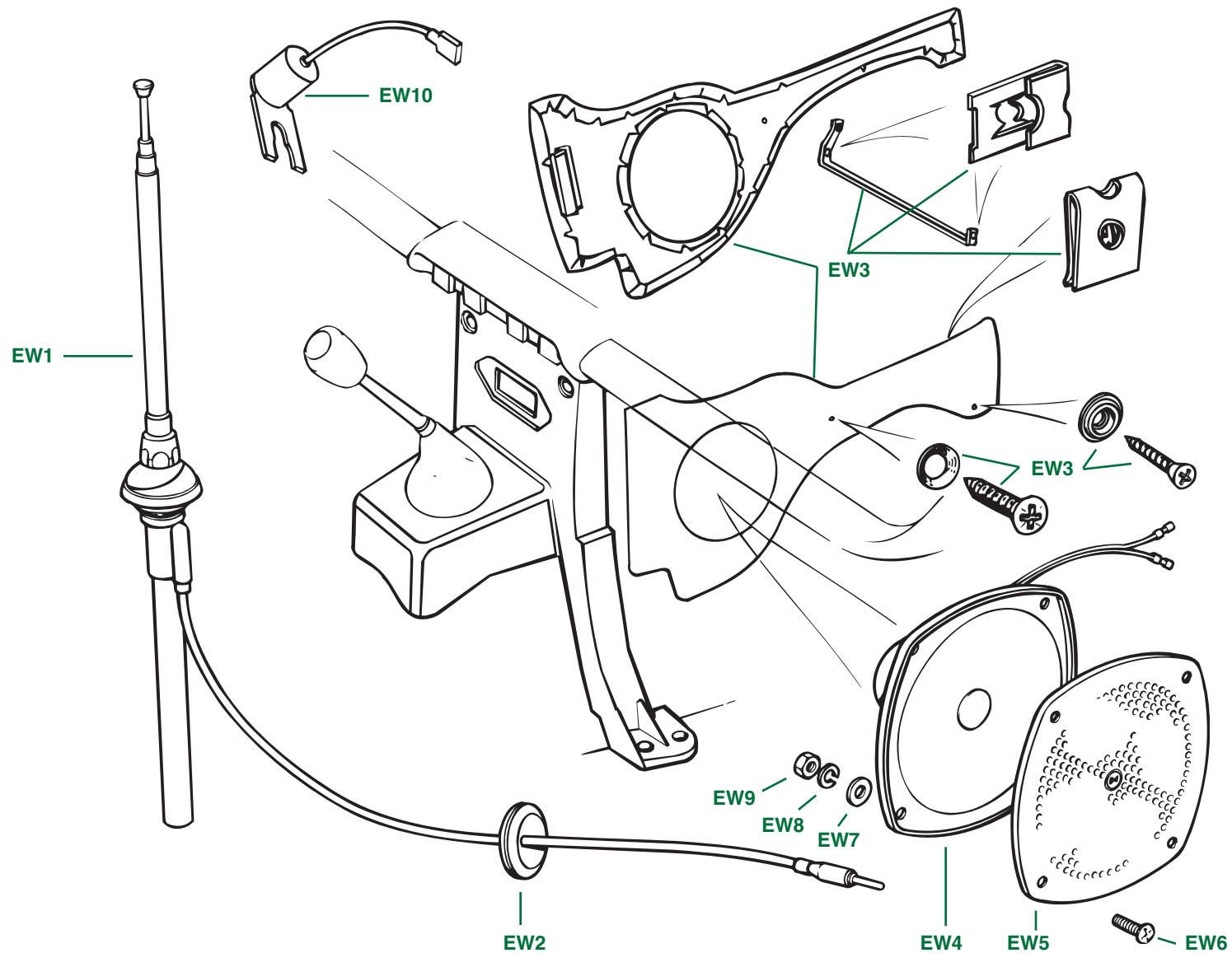
Plate No.	Part No.	Description	No. Off
		OVERDRIVE ELECTRICAL, A-Type Overdrive, fitted up to comm. nos. CF1 and CR1	
EV1	147281	SWITCH , overdrive, left-hand steering	1
	147280	SWITCH , overdrive, right-hand steering	1
EV2	WN712	Washer , shakeproof, securing overdrive switch to switch escutcheon	1
EV3	609792	Bezel (Nut), chromed, securing overdrive switch to switch escutcheon	1
EV4	611974	Escutcheon , overdrive and turn signal switches	1
EV5	611011	Label , decal, turn signal switch, applied to escutcheon, left-hand steering	1
	611012	Label , decal, turn signal switch, applied to escutcheon, right-hand steering	1
EV6	148696	Wiring Harness , upper part, connecting switch and relay to lower harness	1
EV7	LUCWB300	Connector , wiring, two-way	2
EV8	126792	Relay , overdrive	1
EV9	131339	Wiring Harness , lower part, connecting upper harness to interrupter switches and solenoid	1
EV10	LUCWB300	Connector , wiring, two-way	2
EV11	127380	Switch , interrupter	2
EV12	502146	Washer , fibre, switch adjusting	A/R
EV13	112946	SOLENOID ASSEMBLY , overdrive	1
EV14	109521	Cover , rubber, solenoid	1
EV15	105921	Boot , solenoid plunger	1
EV16	513201	Gasket , between solenoid and bracket	1

Plate No.	Part No.	Description	No. Off
		OVERDRIVE ELECTRICAL, J-Type Overdrive, fitted after comm. nos. CF1 and CR1	
EV17	147281	SWITCH , overdrive, left-hand steering	1
	147280	SWITCH , overdrive, right-hand steering	1
EV18	WN712	Washer , shakeproof, securing overdrive switch to switch escutcheon	1
EV19	609792	Bezel (Nut), chromed, securing overdrive switch to switch escutcheon	1
EV20	611974	Escutcheon , overdrive and turn signal switches	1
EV21	611011	Label , decal, turn signal switch, applied to escutcheon, left-hand steering	1
	611012	Label , decal, turn signal switch, applied to escutcheon, right-hand steering	1
EV22	UKC345	Wiring Harness , upper part, connecting switch to lower harness	1
EV23	UKC344	Wiring Harness , lower part, connecting upper harness to interrupter switch and to solenoid	1
EV24	LUCWB300	Connector , wiring, two-way	4
EV25	UKC930	Switch , interrupter and reversing lamps	1
EV26	502146	Washer , fibre, switch adjusting	A/R
		SOLENOID DETAILS	
EV27	NKC41	Solenoid Valve	1
EV28	NKC108	Washer , copper	1
EV29	NKC107	"O" Ring	1
EV30	NKC67	Wiring Lead , to earth	1

PLATE EW

RADIO INSTALLATION DETAILS

TRIUMPH TR6



RADIO INSTALLATION DETAILS

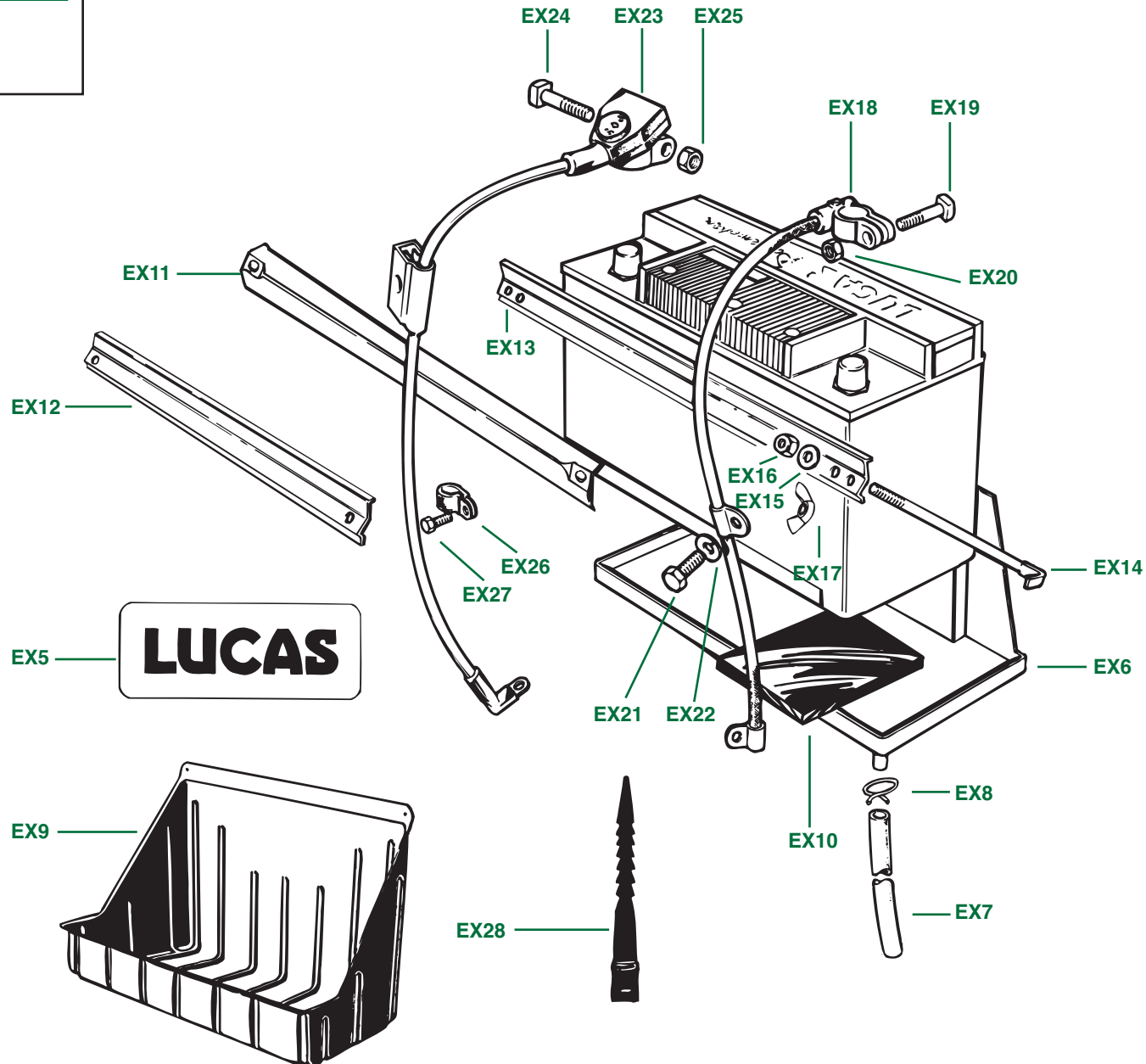
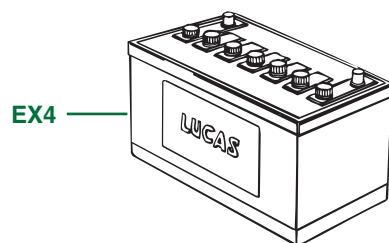
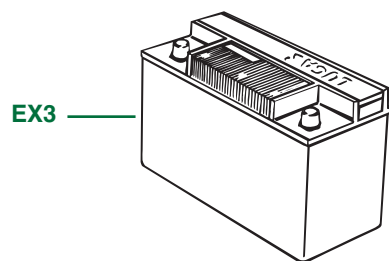
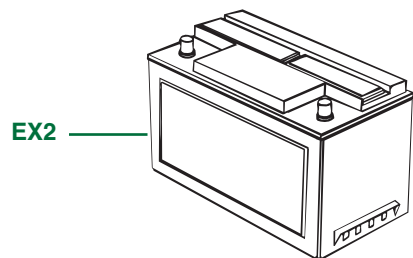
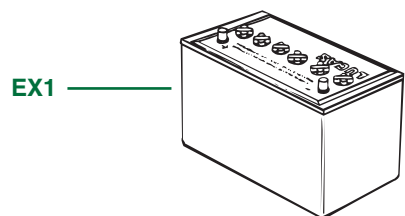
Plate No.	Part No.	Description	No. Off
		Please Note: Radio of your choice is mounted in the aperture provided in the padded dash support bracket after removing the blanking plate. Some cutting of the padding and/or the cast aluminium base of the dash support bracket may be necessary, depending upon your choice of radio.	
		AERIAL DETAILS	
EW1	YKC1856	Aerial , radio, with lead, original-equipment	1
	REP239	Aerial , radio, with lead, aftermarket, replacement with appearance similar to original-equipment	1
EW2	602037	Grommet , rubber, sealing lead entry hole in L.H. bulkhead end panel	1
		SPEAKER DETAILS	
EW3	RFK518	CONSOLE TRIM KIT , comprising one pair of console trim panels with radio speaker mounting holes and all console trim fitting hardware, stag grain vinyl trim, as fitted up to comm. nos. CF1 and CR1	1
	RFK528	CONSOLE TRIM KIT , comprising one pair of console trim panels with radio speaker mounting holes and all console trim fitting hardware, longhorn grain vinyl trim, as fitted after comm. nos. CF1 and CR1	1
		Please Note: Individual components included in Console Trim Kits are listed in Sections FZ, GA, GB, and GC.	
EW4	YKC541	Speaker Assembly , original-equipment or similar	2
EW5	ZKC412	Grille , speaker	2
	RFK718	HARDWARE KIT , securing speakers and grilles to console trim panels	1
EW6	514776	Screw	8
EW7	WP124	Washer , plain	8
EW8	WQ305	Washer , lock	8
EW9	HN2005	Nut	8
EW10	UKC2211	Capacitor , radio suppression, secured by rear bolt which also secures ignition coil mounting bracket; connects to positive side of coil	1

Plate No.	Part No.	Description	No. Off
-----------	----------	-------------	---------

PLATE EX

BATTERY AND RELATED
COMPONENTS

TRIUMPH TR6



BATTERY AND RELATED COMPONENTS

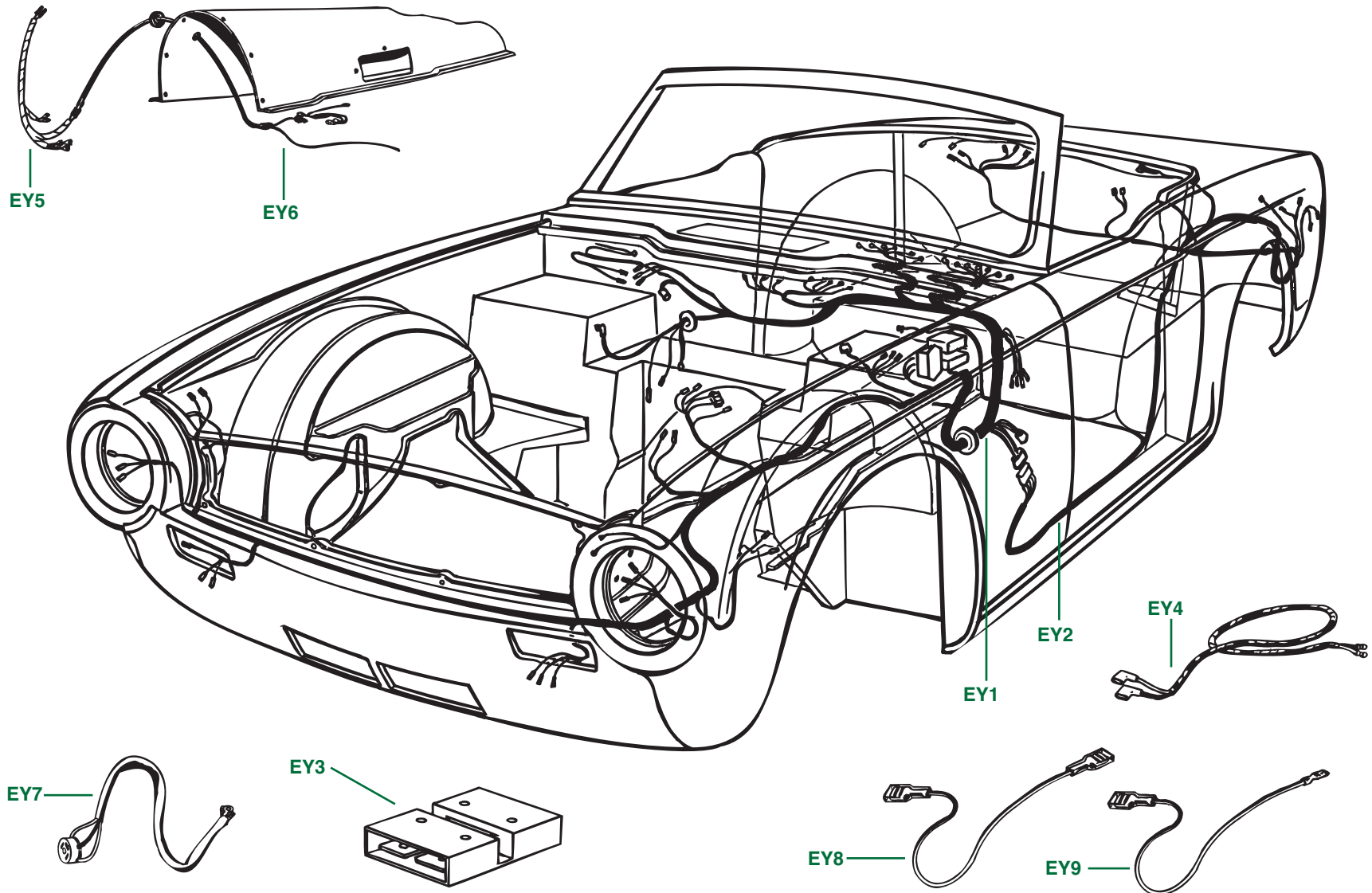
Plate No.	Part No.	Description	No. Off
BATTERIES			
ORIGINAL PART NUMBERS			
EX1	517579	Battery , fitted up to comm. nos. CC77538 and CP75376	1
EX2	520489	Battery , Lucas A11, fitted after comm. nos. CC77539 and CP75377	1
EX3	217995	Battery , late U.S.A. models	1
	218032	Battery , cold climates	1
REPLACEMENT BATTERIES			
EX4	TRF7403	Battery , Lucas replica; black tar-top battery; 36-month warranty	1
BATTERY LABELS, ETC.			
EX5	CNP1564	Lucas Label ; convert your generic battery	1
BATTERY BOX LINERS			
ORIGINAL BATTERY TRAY , fitted to late U.S. models			
EX6	821419	Tray , battery	1
EX7	631700	Tube , drain, battery tube	1
EX8	603559	Clip , securing drain tube to battery tray	1
EX9	TRF7301	Aftermarket Battery Box Liner , fitted to many U.S. models by the dealers	1
BATTERY ATTACHMENTS : select items from the list below to fit the size of the battery being used			
EX10	602945	Pad , rubber, battery shelf; two stacks of two	4
BATTERY ANGLES			
EX11	601898	Angle , retaining battery, fitted up to comm. nos. CC75000 and CP75000	1
EX12	157910	Angle , retaining battery, smaller batteries, fitted after comm. nos. CC75000 and CP75000	1
EX13	157740	Angle , retaining battery, larger batteries, fitted after comm. nos. CC75000 and CP75000	1
RETAINING RODS ; select size required			
EX14	610798	Rod , battery retaining, 8 1/2-inch length	2
	613051	Rod , battery retaining, 5 3/4-inch length	2
	618434	Rod , battery retaining, 6-inch length; fitted to late U.S. models with small battery	2
HARDWARE , securing battery rods and angles			
EX15	WM57	Washer , plain, fitted up to comm. nos. CC75000 and CP75000	2
	WP127	Washer , plain, fitted after comm. nos. CC75000 and CP75000	2
EX16	YN2907	Nut , nyloc	2
EX17	132068	Nut , wing; alternative to YN2907	2

Plate No.	Part No.	Description	No. Off
BATTERY CABLES			
EX18	516508	Battery Cable , from negative battery terminal to engine to ground	1
HARDWARE , securing battery cable to negative battery terminal			
EX19	518903	Bolt , battery lug	1
EX20	518904	Nut , battery lug	1
HARDWARE , grounding negative battery cable to body shell			
EX21	HU805P	Screw , set	1
EX22	WL208	Washer , lock	1
	517081	Battery Cable , from positive battery terminal to starter solenoid, fitted up to comm. no. CF1	1
EX23	159805	Battery Cable , from positive battery terminal to starter solenoid, fitted after comm. no. CF1	1
HARDWARE , securing battery cable to positive battery terminal			
EX24	518903	Bolt , battery lug	1
EX25	518904	Nut , battery lug	1
EX26	508185	Clip , insulated, anchoring positive battery cable to body shell	1
EX27	506185	Screw , set, securing clip to body shell	1
EX28	145890	Clip , fir tree, securing battery cables	2

PLATE EY

WIRING HARNESSES

TRIUMPH TR6



WIRING HARNESSES

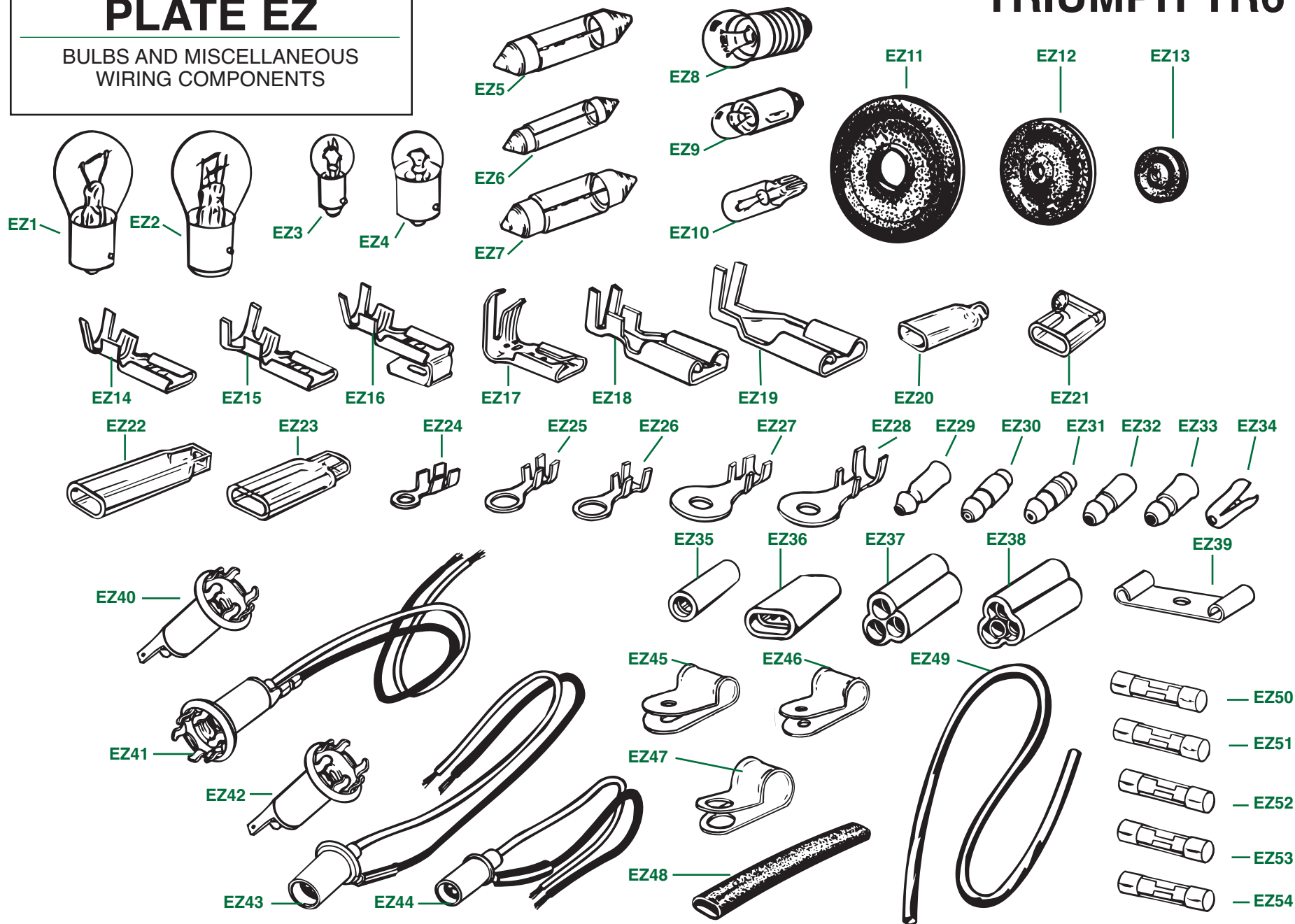
Plate No.	Part No.	Description	No. Off
EY1		MAIN WIRING HARNESSES , U.S.A. models	
	308795	Main Harness , fitted up to comm. no. CC50000	1
	311261	Main Harness , fitted from comm. no. CC50000 up to CC75000	1
	312295	Main Harness , fitted from comm. no. CC75000 up to CF1	1
	313183	Main Harness , fitted from comm. no. CF1 up to CF990	1
	RKC250	Main Harness , fitted from comm. no. CF991 (late 1973) up to CF12500	1
	RKC351	Main Harness , fitted from comm. no. CF12500 up to CF?	1
	RKC960	Main Harness , fitted from comm. no. CF? (late 1974) up to CF35000	1
	RKC1768	Main Harness , fitted from comm. no. CF35000 up to CF50000	1
	RKC2881	Main Harness , fitted after comm. no. CF50000	1
		MAIN WIRING HARNESSES , models with L.H. steering other than U.S.A.	
	309795	Main Harness , fitted up to comm. no. CP50000	1
	311311	Main Harness , fitted from comm. no. CP50000 up to CP75000	1
	312369	Main Harness , fitted from comm. no. CP75000 up to CR1	1
	313179	Main Harness , fitted from comm. no. CR1 up to CR5000	1
	RKC572	Main Harness , fitted after comm. no. CR5000	1
		MAIN WIRING HARNESSES , all models with R.H. steering	
	308796	Main Harness , fitted up to comm. no. CP50000	1
	311310	Main Harness , fitted from comm. no. CP50000 up to CR1	1
	313180	Main Harness , fitted from comm. no. CR1 up to CR5000	1
	RKC571	Main Harness , fitted after comm. no. CR5000	1
EY2		BODY WIRING HARNESSES , U.S.A. models	
	215412	Body Harness , fitted up to comm. no. CC75000	1
	218321	Body Harness , fitted from comm. no. CC75000 up to CF1	1
	218950	Body Harness , fitted from comm. no. CF1 up to CF12500	1
	TKC859	Body Harness , fitted from comm. no. CF12500 up to CF50000	1
	TKC2901	Body Harness , fitted after comm. no. CF50000	1
		BODY WIRING HARNESSES , all models other than U.S.A.	
	215413	Body Harness , fitted up to comm. no. CR1	1
	218949	Body Harness , fitted after comm. no. CR1	1

Plate No.	Part No.	Description	No. Off
EY3	150640	CONNECTOR BLOCK , connecting leads from alternator to starter solenoid leads; fitted up to CC75000	1
EY4		GEARBOX WIRING HARNESSES , back up lamps, U.S.A. models	
	147777	Gearbox Harness , back up lamps, fitted up to comm. no. CC75000	1
	158338	Gearbox Harness , back up lamps and seat belt interlock, fitted from comm. no. CC75000 up to CF50000	1
	UKC7120	Gearbox Harness , back up lamps, fitted after comm. no. CF50000	1
		GEARBOX WIRING HARNESSES , back up lamps, all models other than U.S.A.	
	147777	Gearbox Harness , back up lamps, fitted up to comm. no. CP75000	1
	141037	Gearbox Harness , back up lamps, fitted after comm. no. CP75000	1
EY5		OVERDRIVE WIRING HARNESSES , A-type overdrive	
	148696	Wiring Harness , upper part, connecting switch and relay to lower harness	1
EY6	131339	Wiring Harness , lower part, connecting upper harness to interrupter switches and to solenoid	1
UKC345		OVERDRIVE WIRING HARNESSES , J-type overdrive	
	UKC344	Wiring Harness , upper part, connecting switch to lower harness	1
EY7		Wiring Harness , lower part, connecting upper harness to interrupter switch and to solenoid	1
	501478	HEADLAMP WIRING	
504806		Cable and S.A.E. Connector Assembly , headlamps	2
		Sleeve , plastic, protecting headlamp cables	2
EY8		LOW-TENSION LEADS , from coil to distributor	
	125957	Low-Tension Lead , with two female connectors, fitted up to comm. no. CF1 on carb models	1
125957		Low-Tension Lead , with two female connectors; probably fitted to all P.I. models	1
	EY9	Low-Tension Lead , with one female connector and one male connector, fitted after comm. no. CF1 on carb models	1

PLATE EZ

BULBS AND MISCELLANEOUS
WIRING COMPONENTS

TRIUMPH TR6



BULBS AND MISCELLANEOUS WIRING COMPONENTS

Plate No.	Part No.	Description	No. Off
BULBS—QUICK REFERENCE LISTING, all genuine			
		Lucas bulbs	
EZ1	LULLB382	Bulb , front signal lamps, fitted after comm. no. CF27000	2
	LULLB382	Bulb , rear signal lamps	2
	LULLB382	Bulb , back up lamps	2
EZ2	LULLB380	Bulb , front signal/parking lamps, fitted up to comm. no. CF27000	2
			1
	LULLB380	Bulb , stop/tail lamps	2
EZ3	LULLB989	Bulb , front parking lamps, fitted after comm. no. CF27000	2
	LULLB989	Bulb , front sidemarker lamps	2
	LULLB989	Bulb , rear sidemarker lamps	2
EZ4	LULLB207	Bulb , rear number plate lamps, fitted up to comm. no. CF1	2
EZ5	LULLB239	Bulb , rear number plate lamps, fitted after comm. no. CF1	2
EZ6	LULLB256	Bulb , trunk lamp	1
EZ7	LULLB254	Bulb , courtesy lamp, mounted on tunnel behind seats, fitted up to comm. no. CF1	1
EZ8	LULLB987	Bulb , instrument panel lamps mounted in gauges	12
	LULLB987	Bulb , warning lamps in tachometer and speedometer	4
	LULLB987	Bulb , brake and hazard warning lamps, fitted up to comm. no. CF1	2
	LULLB987	Bulb , key lamp, fitted after comm. no. CC50000	1
	LULLB987	Bulb , glovebox lamp	1
EZ9	LULLB281	Bulb , inside illuminated knob for hazard switch, fitted after comm. no. CF1	1
	LULLB281	Bulb , courtesy lamp, passenger's side, mounted under glovebox, fitted after comm. no. CF1	1
	LULLB281	Bulb , warning "tags," fitted after comm. no. CC75000 (1 to 5 req.)	A/R
EZ10	LULLB286	Bulb , heater control lamps, fitted after comm. no. CF1	1
		BULB KITS , all genuine Lucas bulbs	
	RFK730	Bulb Kit, complete, fitted up to comm. no. CF1; includes 38 bulbs	1
	RFK731	Bulb Kit, complete, fitted from comm. no. CF1 up to CF27000; includes 40 bulbs	1
	RFK732	Bulb Kit, complete, fitted after comm. no. CF27000; includes 73 bulbs	1

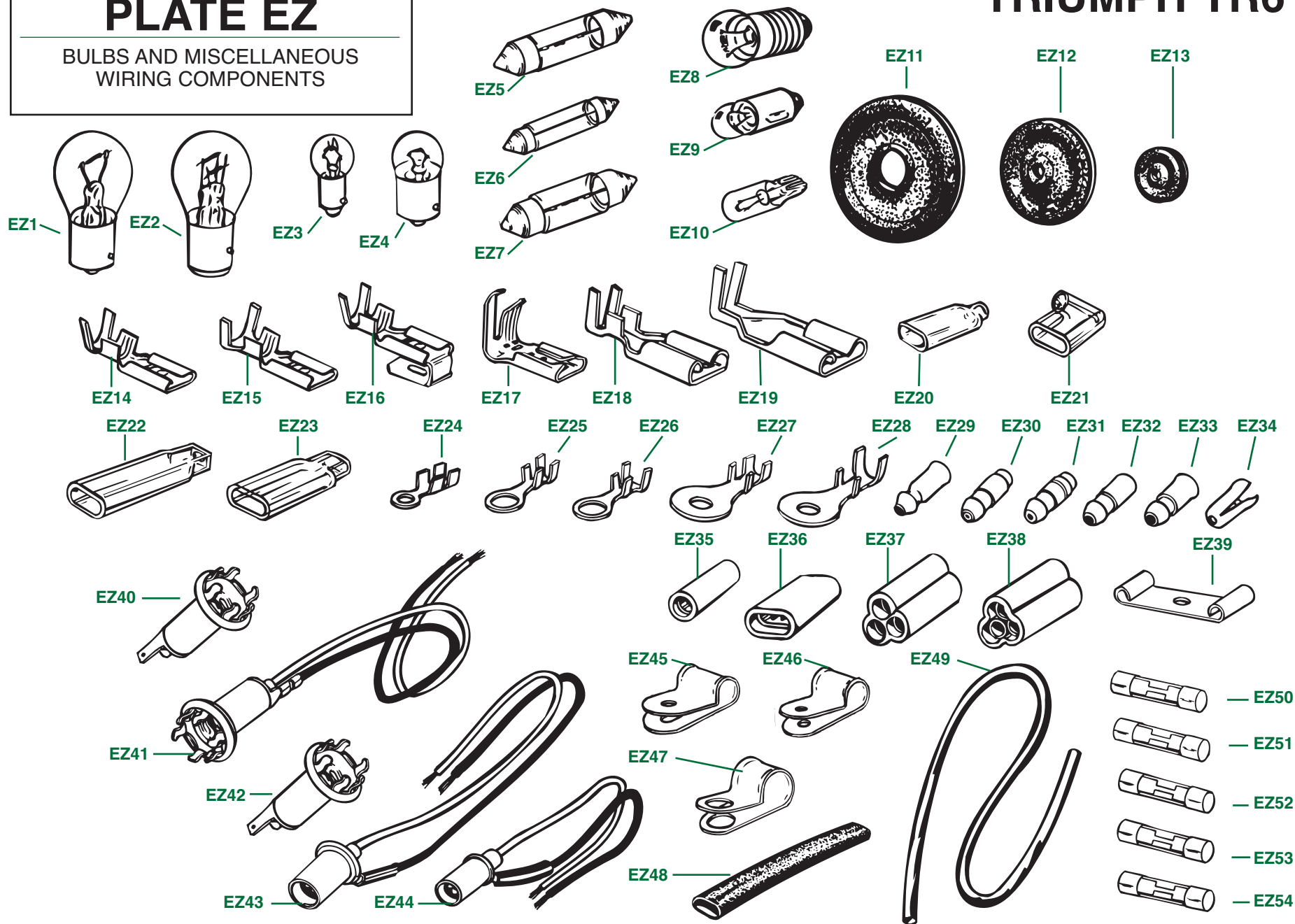
Plate No.	Part No.	Description	No. Off
RUBBER GROMMETS , sealing wiring harness			
EZ11	RG3	Grommet , rubber, large, main wiring harness to hole in L.H. side of bulkhead	1
EZ12	600395	Grommet , rubber, medium size, main wiring harness to hole in R.H. side of bulkhead	1
	600395	Grommet , rubber, medium size, headlamp leads and sidemarker leads to holes in inner front fenders	2
	600395	Grommet , rubber, medium size, rear number plate lamp lead to hole in inner rear valance	1
	612715	Grommet , rubber, medium size, reverse lamp lead and overdrive lead to hole in gearbox cover	1
EZ13	61917	Grommet , rubber, small, windscreen washer motor lead to hole in bulkhead	1
	61917	Grommet , rubber, small, license plate lamp lead to hole in outer rear valance	1
	61917	Grommet , rubber, small, front signal lamp leads to holes in front valance, fitted after comm. no. CF27000	1
MISCELLANEOUS WIRING COMPONENTS , for repairs and for additional wiring			
FEMALE "LUCAR" TERMINALS			
EZ14	LUCWB122	Lucar Terminal , regular type, 1/4-inch blade, for smaller wire	A/R
EZ15	LUCWB123	Lucar Terminal , regular type, 1/4-inch blade, for larger wire	A/R
EZ16	LUCWB124	Lucar Terminal , piggy-back type, 1/4-inch blade, for smaller wire	A/R
EZ17	LUCWB125	Lucar Terminal , right-angled type, 1/4-inch blade, for all wire sizes	A/R
EZ18	LUCWB130	Lucar Terminal , regular type, 3/8-inch blade, for larger wire	A/R
EZ19	LUCWB140	Lucar Terminal , regular type, 1/2-inch wire, for very large wire	A/R
INSULATING COVERS FOR FEMALE LUCAR TERMINALS , transparent plastic			
EZ20	LUCWB420	Cover , insulating, regular type, for terminals with 1/4-inch blades	A/R
EZ21	LUCWB425	Cover , insulating, right-angle type, for terminals with 1/4-inch blades	A/R
EZ22	LUCWB430	Cover , insulating, regular type, for terminals with 3/8-inch blades	A/R
EZ23	LUCWB440	Cover , insulating, regular type, for terminals with 1/2-inch blades	A/R

(Continued on next page.)

PLATE EZ

BULBS AND MISCELLANEOUS
WIRING COMPONENTS

TRIUMPH TR6



BULBS AND MISCELLANEOUS WIRING COMPONENTS

Plate No.	Part No.	Description	No. Off
MISCELLANEOUS WIRING COMPONENTS—Continued			
EYELET TERMINALS			
EZ24	LUCWB630	Terminal , eyelet, small eyelet, small wire	A/R
EZ25	LUCWB632	Terminal , eyelet, medium eyelet, medium wire	A/R
EZ26	LUCWB633	Terminal , eyelet, medium eyelet, larger wire	A/R
EZ27	LUCWB635	Terminal , eyelet, larger eyelet, small wire	A/R
EZ28	LUCWB636	Terminal , eyelet, larger eyelet, medium wire	A/R
BULLET TERMINALS			
CRIMP-TYPE BULLET TERMINALS (Can also be soldered.)			
EZ29	LUCWB321	Bullet Terminal , smaller wire	A/R
EZ30	LUCWB322	Bullet Terminal , medium wire	A/R
EZ31	LUCWB323	Bullet Terminal , medium-large wire	A/R
EZ32	LUCWB324	Bullet Terminal , larger wire	A/R
SOLDER-TYPE BULLET TERMINALS			
EZ33	LUCWB320	Bullet Terminal , all wire sizes	A/R
EZ34	LUCWB330	Terminal Sleeve , spring type, used in many lamp terminals to secure wire	A/R
SNAP CONNECTORS , for bullet terminals			
EZ35	LUCWB300	Connector , snap, two-way	A/R
EZ36	LUCWB301	Connector , snap, four-way	A/R
EZ37	LUCWB302	Connector , snap, six-way insulated	A/R
EZ38	LUCWB303	Connector , snap, six-way, all common	A/R
GROUNDING CLIPS			
EZ39	236366A	Clip , grounding, four-way	A/R
BULBHOLDERS			
EZ40	LU54967050	Bulbholder , speedometer and tachometer illumination, non-insulated with internal ground (Takes LULLB987 bulb.)	A/R
EZ41	LUCAB302	Bulbholder , warning lamp type, insulated type with separate ground wire (Takes LULLB987 bulb)	A/R
EZ42	LU54967050	Bulbholder , warning lamp type, non-insulated type with internal ground (Takes LULLB987 bulb)	A/R
EZ43	LUCAB301	Bulbholder , small gauge illumination (Takes LULLB281 bulb.)	A/R
EZ44	LU54364380	Bulbholder , warning label type (Takes LULLB281 bulb)	A/R
WIRING CLIPS			
EZ45	LUCZB100	Clip , small	A/R
EZ46	LUCZB102	Clip , medium	A/R
EZ47	LUCZB104	Clip , larger	A/R
PLASTIC SLEEVES ON WIRING CLIPS WELDED TO CAR BODY			
EZ48	511551	Sleeve , plastic, wiring protection	A/R

Plate No.	Part No.	Description	No. Off
MISCELLANEOUS WIRING COMPONENTS—Continued			
PLASTIC TUBING , wiring protection			
EZ49	LUCZB404/36	Tubing , black plastic, 36-inch length	A/R
	LUCZB404/72	Tubing , black plastic, 72-inch length	A/R
FUSES ; 35-amp is standard for all stock TR6 applications; TRF handles only genuine Lucas-brand fuses			
EZ50	LUF10	Fuse , 10 amps	A/R
EZ51	LUF15	Fuse , 15 amps	A/R
EZ52	LUF25	Fuse , 25 amps	A/R
EZ53	LUF35	Fuse , 35 amps	A/R
EZ54	LUF50	Fuse , 50 amps	A/R