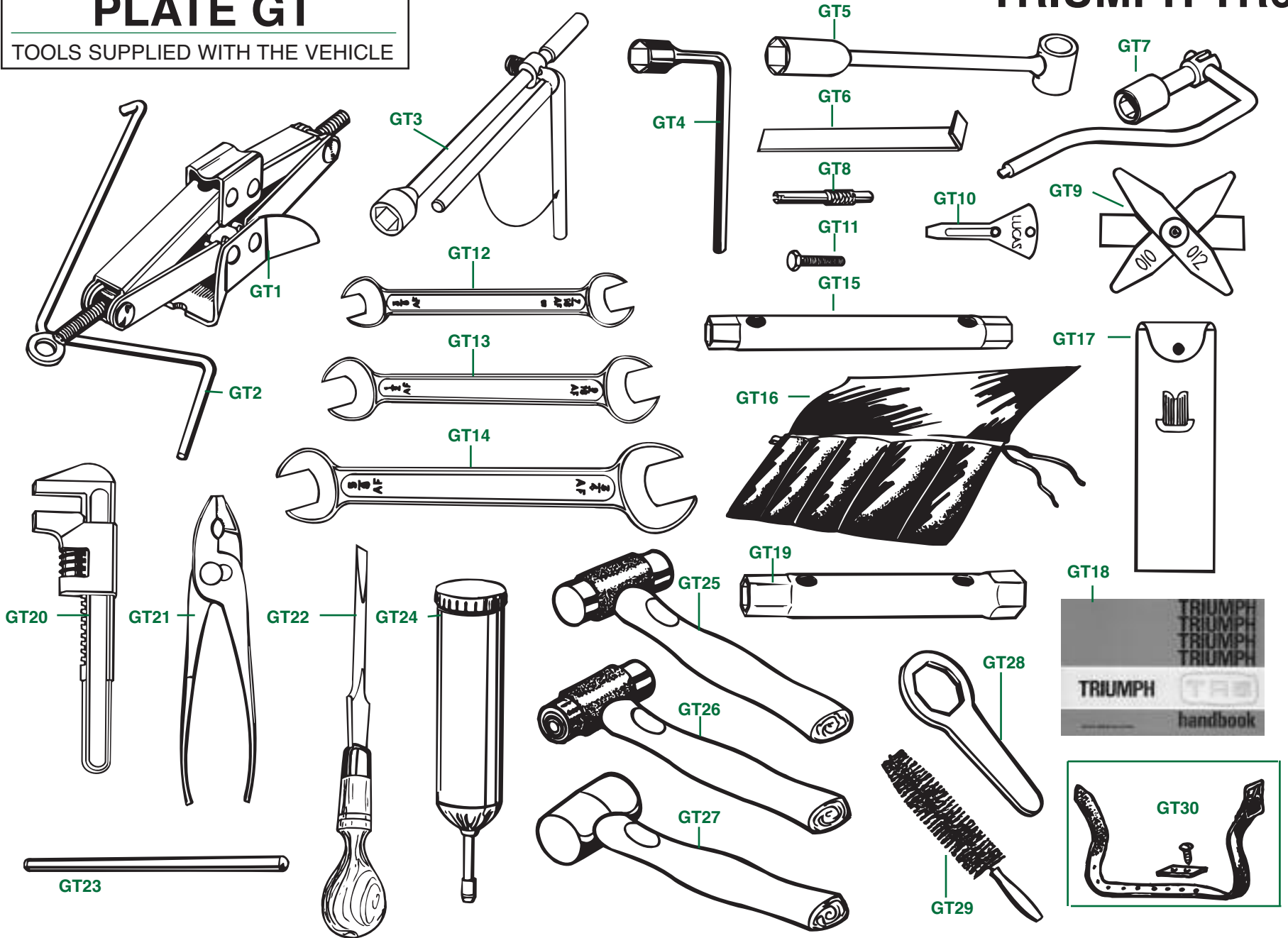


# PLATE GT

TOOLS SUPPLIED WITH THE VEHICLE

# TRIUMPH TR6



# TOOLS SUPPLIED WITH THE VEHICLE

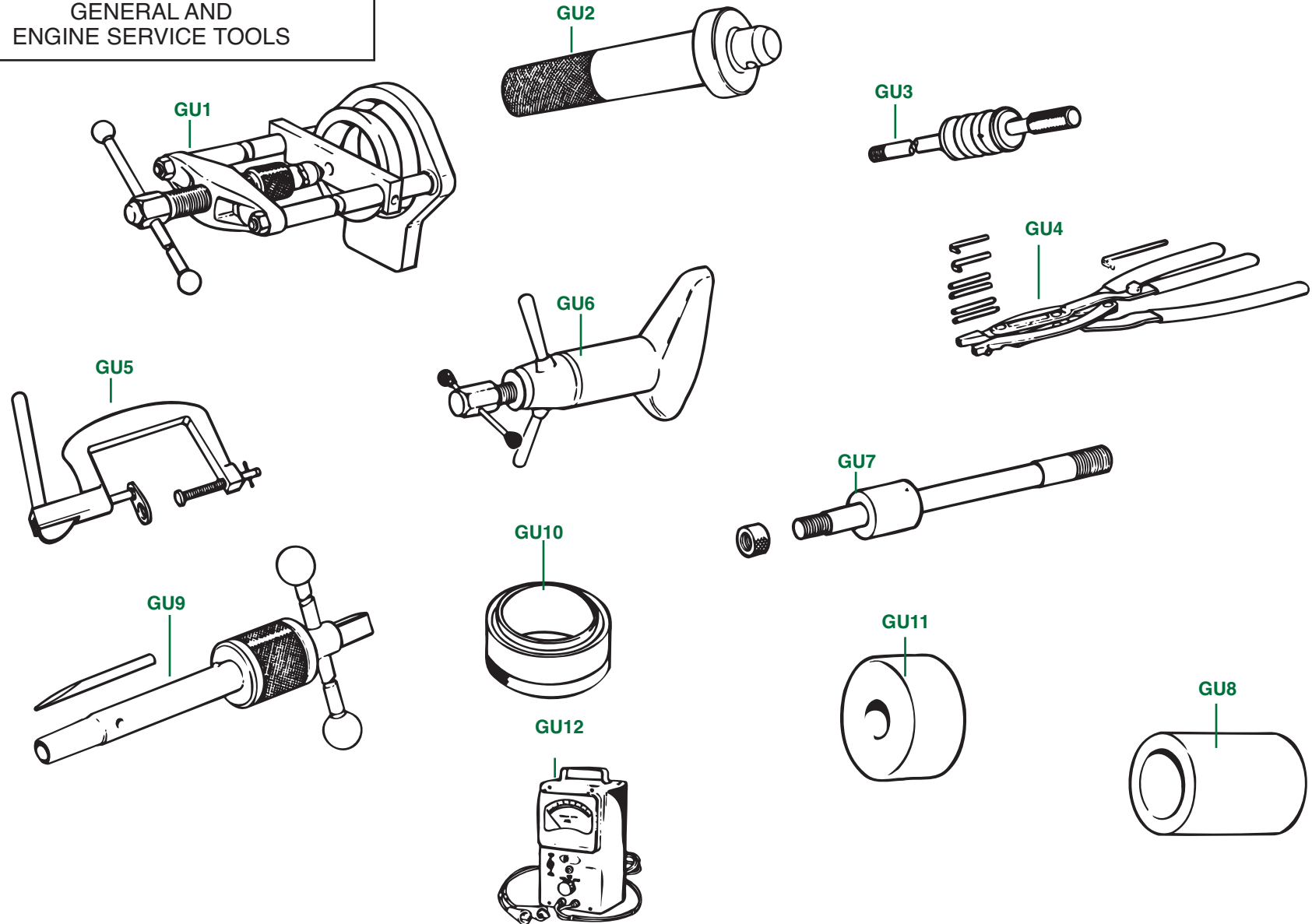
Plate No.	Part No.	Description	No. Off
		<b>Please Note:</b> In actual fact, the contents of tool kits supplied with the vehicle varied from year to year. Using listings from the sections below, however, you can create an authentic tool kit of greater or lesser complexity for any TR6.	
		<b>TOOLS LISTED IN FACTORY SPARE PARTS CATALOGUES</b>	
GT1	212677	<b>Jack Assembly</b> , scissors type	1
GT2	UKC4389	<b>Handle</b> , jack	1
GT3	59428	<b>Spanner</b> , wheel nut, earlier models	1
GT4	138514	<b>Spanner</b> , wheel nut, later models	1
GT5	132368	<b>Spanner</b> , spark plugs	1
GT6	118971	<b>Tool</b> , headlamp rim removal	1
GT7	152166	<b>Combination Tool</b> ; also for wheel trim removal	1
GT8	52203	<b>Tool</b> , tire valve core removal	1
GT9	125505	<b>Feeler Gauge</b>	1
GT10	500905	<b>Distributor Tool and Screwdriver</b> , Lucas; also great for your key fob	1
GT11	UH508	<b>Screw</b> , set, no. 10 N.F., for removing front hub grease caps	1
GT12	109316	<b>Spanner</b> , open-ended, 3/8-inch x 7/16-inch	1
GT13	109318	<b>Spanner</b> , open-ended, 1/2-inch x 9/16-inch	1
GT14	109317	<b>Spanner</b> , open-ended, 5/8-inch x 3/4-inch	1
GT15	109319	<b>Spanner</b> , tube, .50-inch x .56-inch	1
GT16	24731	<b>Tool Roll</b> ; may have been used for earlier models	1
GT17	146366	<b>Tool Pouch</b> ; used for later models	1
		<b>OWNER'S HANDBOOKS</b>	
GT18	545074	<b>Owner's Handbook</b> , blue, U.S.A. models, up to comm. no. CF1	1
	545111/73	<b>Owner's Handbook</b> , purple, U.S.A. models, 1973 model year	1
	545111/74	<b>Owner's Handbook</b> , purple, U.S.A. models, 1974 model year	1
	545111/75	<b>Owner's Handbook</b> , purple, U.S.A. models, 1975 model year	1
	545111/76	<b>Owner's Handbook</b> , purple, U.S.A. models, 1976 model year	1
	545078	<b>Owner's Handbook</b> , P.I. models	1

Plate No.	Part No.	Description	No. Off
		<b>ADDITIONAL AND ALTERNATIVE TOOLS</b>	
GT19	109320	<b>Spanner</b> , tube, spark plugs	1
GT20	113228	<b>Spanner</b> , adjustable	1
GT21	109322	<b>Grips</b> , slip joint; pliers	1
GT22	108674	<b>Screwdriver</b> ; wooden handle	1
GT23	132742	<b>Tommy Bar</b>	1
GT24	119218	<b>Grease Gun</b>	1
		<b>TOOLS FOR WIRE WHEELS</b>	
GT25	108450	<b>Hammer</b> , knock-off, copper/copper faces	1
GT26	C27290	<b>Hammer</b> , knock-off, copper/hide faces	1
GT27	RFT107	<b>Hammer</b> , knock-off, lead head (Very easy on your chromed nuts.)	1
GT28	AHH5839	<b>Spanner (Wrench)</b> , for use in knocking-off octagonal type wheel nuts	1
GT29	WWSB183	<b>Cleaning Brush</b> , for wire wheels	1
GT30	RFK645	<b>Tool Stowage Belt Kit</b> , with attaching hardware, fitted to spare wheel pin	1

# PLATE GU

SPECIAL SERVICE TOOLS, SECTION 1  
GENERAL AND  
ENGINE SERVICE TOOLS

# TRIUMPH TR6



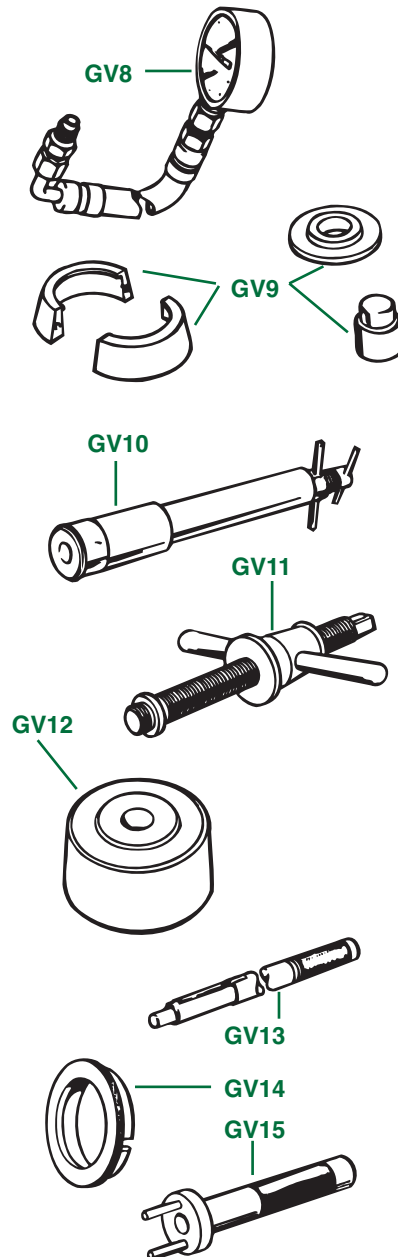
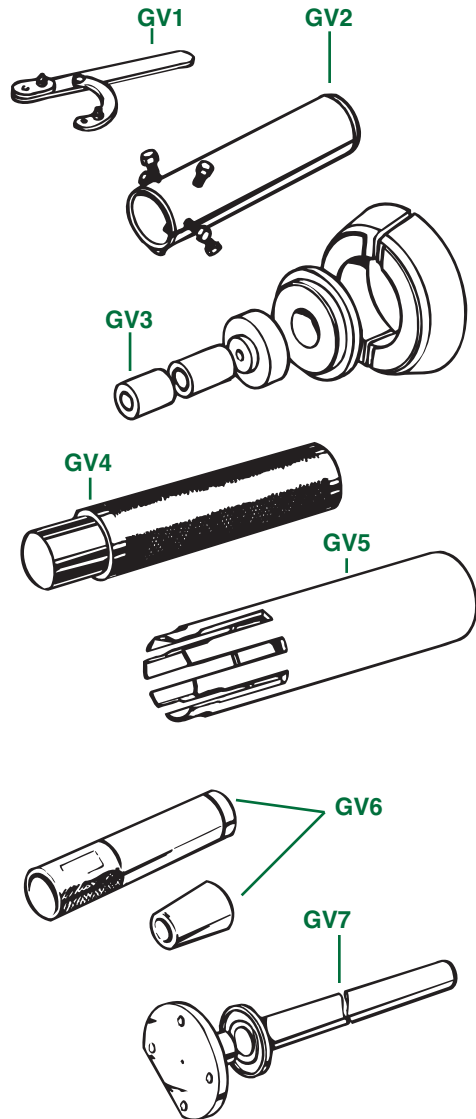
# SPECIAL SERVICE TOOLS, SECTION 1—GENERAL AND ENGINE SERVICE TOOLS

Plate No.	Part No.	Description	No. Off
		<p><b>Note:</b> Special service tools for Triumph cars were manufactured and distributed by the Messrs. V.L. Churchill and Company now located in Daventry, Northants. Although most of these tools are now unavailable, we are listing them here with illustrations for your information. We have also produced special runs of a few of these tools, and we will produce more if demand exists.</p> <p><b>CHURCHILL TOOLS OF GENERAL APPLICATION</b></p>	
GU1	CL47	<b>Multi-Purpose Hand Press</b> , basic tool	1
GU2	CL550	<b>Handle</b> , driver, basic tool	1
GU3	CL4235A	<b>Hammer</b> , slide, basic tool	1
GU4	CL7066	<b>Pliers</b> , circlip	1
		<b>CHURCHILL ENGINE SERVICE TOOLS</b>	
GU5	CL18G106	<b>Compressor</b> , valve spring	1
GU6	CL60A	<b>Remover/Replacer</b> , valve guide	1
GU7	CLS60A-2A	<b>Adaptor Set</b> , valve guide remover/replacer	1
GU8	CLS60A-7	<b>Adaptor</b> , valve guide replacer	1
GU9	CL316X	<b>Handle</b> , valve seat cutter	1
GU10	CL335	<b>Jig</b> , aligning, connecting rod	1
GU11	CL336-4	<b>Arbor Adaptor</b> , connecting rod	1
GU12	CL642	<b>Tachometer</b> , electronic	1

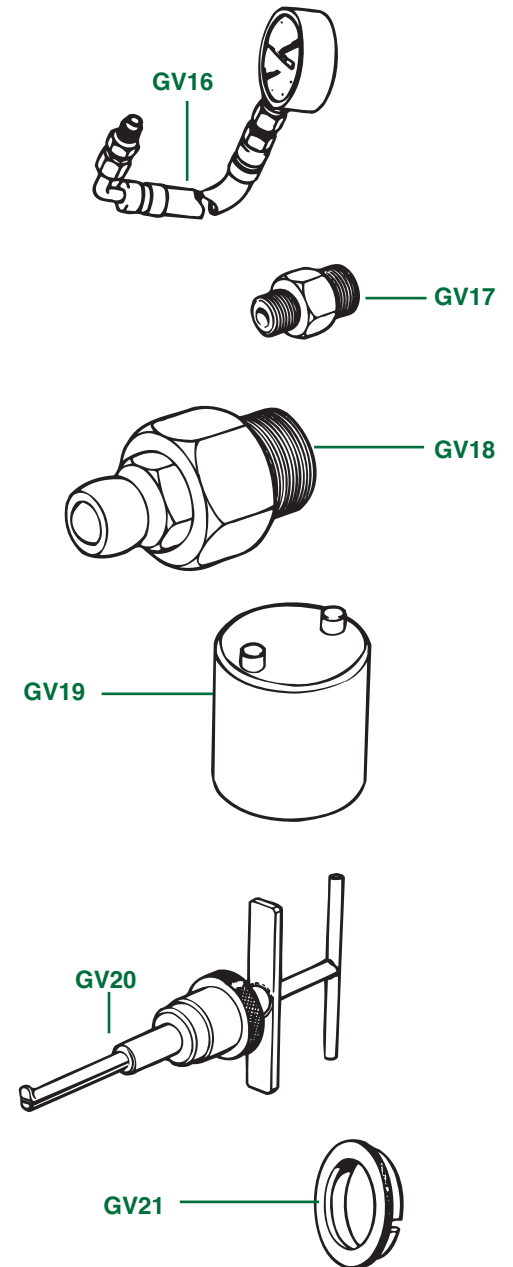
Plate No.	Part No.	Description	No. Off
-----------	----------	-------------	---------

# PLATE GV

SPECIAL SERVICE TOOLS, SECTION II  
GEARBOX AND OVERDRIVE



# TRIUMPH TR6



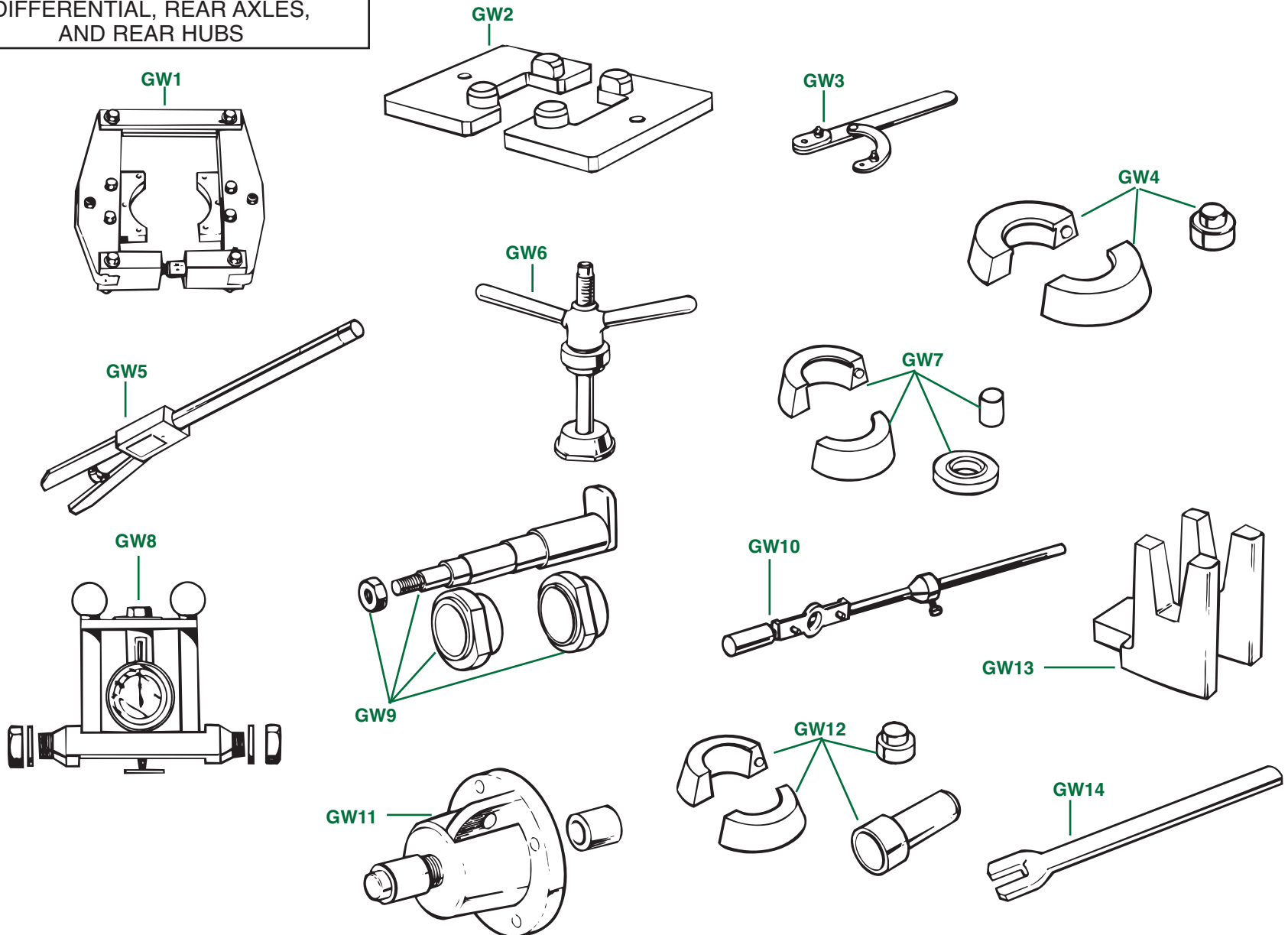
# SPECIAL SERVICE TOOLS, SECTION II—GEARBOX AND OVERDRIVE

Plate No.	Part No.	Description	No. Off
		<p><b>Note:</b> Special Service tools for Triumph cars were manufactured and distributed by the Messrs. V.L. Churchill and Company now located in Daventry, Northants. Although most of these tools are now unavailable, we are listing them here with illustrations for your information. We have also produced special runs of a few of these tools, and we will produce more if demand exists.</p> <p><b>CHURCHILL GEARBOX SERVICE TOOLS</b></p>	
GV1	CLRG421	<b>Wrench</b> , for holding rear drive flange	1
	CLS316	<b>Wrench</b> , for holding rear drive flange (Alternative to CLRG421.)	1
GV2	CLS4235A-2	<b>Adaptor</b> , input shaft remover (Used with CL4235A, Slide Hammer.)	1
GV3	CLS4221A-15A	<b>Adaptor Set</b> , input shaft bearing remover/replacer, mainshaft center bearing remover (Used with CL47, Multi-Purpose Hand Press.)	1
GV4	RFT118	<b>Driver</b> , for installation of closed-cage countershaft needle bearings	1
GV5	CLS69B	<b>Remover</b> , mainshaft circlip	1
GV6	CLS167A	<b>Replacer</b> , mainshaft circlip	1
GV7	CLS314	<b>Bearing Driver/Abutment Plate Set</b> , replacing main shaft rear bearing	1
		<p><b>CHURCHILL A-TYPE OVERDRIVE SERVICE TOOLS</b></p>	
GV8	CLL188A	<b>PRESSURE TEST EQUIPMENT</b> , including gauge, hose, and adaptor	1
	CLL188-4	<b>Hose</b> , pressure test	1
GV9	CLL187	<b>Adaptor Set</b> , tailshaft bearing remover/replacer (Used with CL47, Multi-Purpose Hand Press.)	1
GV10	CLL182	<b>Remover</b> , accumulator piston housing	1
GV11	CLL183A	<b>Remover</b> , pump barrel	1
GV12	CLL183-1	<b>Adaptor</b> (Used with CLL183A, Pump Barrel Remover.)	1
GV13	CLL185A	<b>Dummy Drive Shaft</b>	1
GV14	CLL178	<b>Jig</b> , freewheel assembly	1
GV15	CLL184	<b>Replacer</b> , oil pump body	1
		<p><b>CHURCHILL J-TYPE OVERDRIVE SERVICE TOOLS</b></p>	
GV16	CLL188A	<b>PRESSURE TEST EQUIPMENT</b> , including gauge, hose, and adaptor	1
	CLL188-4	<b>Hose</b> , pressure test	1
GV17	CLL188A-2	<b>Adaptor</b> , pressure take-off	1
GV18	CLL402	<b>Adaptor</b> , pressure, spline release	1
GV19	CLL354A	<b>Adaptor</b> , spanner, oil pump plug	1
GV20	CLL401A	<b>Remover/Replacer Tool</b> , relieve valve body and dashpot sleeve	1
GV21	CLL178A	<b>Jig</b> , freewheel assembly	1

# PLATE GW

SPECIAL SERVICE TOOLS, SECTION III  
DIFFERENTIAL, REAR AXLES,  
AND REAR HUBS

# TRIUMPH TR6



# SPECIAL SERVICE TOOLS, SECTION III—DIFFERENTIAL, REAR AXLES, AND REAR HUBS

Plate No.	Part No.	Description	No. Off
		<b>Note:</b> Special service tools for Triumph cars were manufactured and distributed by Messrs. V.L. Churchill and Company, now located in Daventry, Northants. Although most of these tools are now unavailable, we are listing them here with illustrations for your information. We have also produced special runs of a few of these tools, and we will produce more if demand exists.	
		<b>CHURCHILL DIFFERENTIAL SERVICE TOOLS</b>	
GW1	CLS101	<b>Spreader</b> , differential case	1
GW2	CLS101-1	<b>Adaptor</b> , differential case spreader	1
GW3	CLRG421	<b>Wrench</b> , for holding pinion flange	1
	CLS316	<b>Wrench</b> , for holding pinion flange (Alternative to CLRG421.)	1
GW4	CLS4221A-10	<b>Adaptor Set</b> , differential carrier side bearing remover (Used with CL47, Multi-Purpose Hand Press.)	1
GW5	CLS123A	<b>Remover</b> , pinion bearing races	1
GW6	CLM70	<b>Replacer</b> , pinion bearing races	1
GW7	CLS4221A-11	<b>Adaptor Set</b> , remover/replacer, pinion head bearing cone (Used with CL47, Multi-Purpose Hand Press.)	1
GW8	CLM84B	<b>Gauge</b> , pinion setting (Used with CLM84B-1, Dummy Pinion and Bearing Set.)	1
GW9	CLM84B-1	<b>Dummy Pinion and Bearing Set</b> (Used with CLM84B.)	1
GW10	CLS98A	<b>Gauge</b> , setting, pinion pre-load	1
		<b>CHURCHILL SERVICE TOOLS FOR REAR AXLES AND REAR HUBS</b>	
GW11	CLMS65	<b>REMOVER</b> , rear hub, hydraulic	1
	CLTS1200-24	<b>Repair Kit</b> , hydraulic seals	1
GW12	CLS4221A-16	<b>Adaptor Set</b> , remover/replacer, outer hub bearing from/to outer axle flange (Used with CL47, Multi-Purpose Hand Press.)	1
GW13	CLS318	<b>Jig</b> , rear hub assembly	1
GW14	CLS317	<b>Wrench</b> , adjusting, rear hub bearings	1

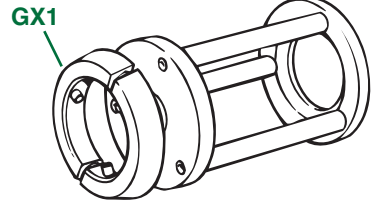
Plate No.	Part No.	Description	No. Off
-----------	----------	-------------	---------



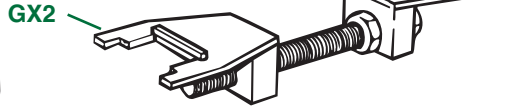
# PLATE GX

SPECIAL SERVICE TOOLS, SECTION IV  
STEERING, SUSPENSION, AND  
MISCELLANEOUS AND  
ALTERNATIVE TOOLS

# TRIUMPH TR6



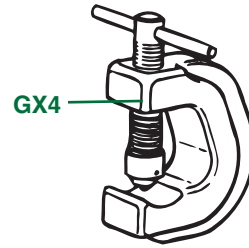
GX1



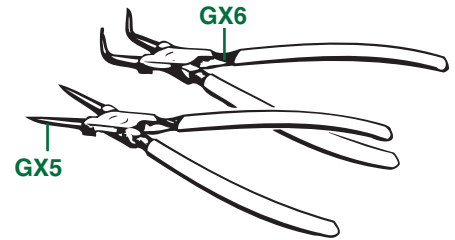
GX2



GX3

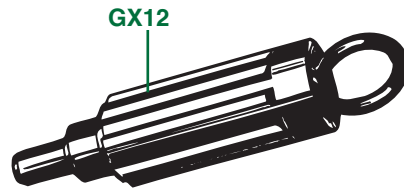


GX4



GX5

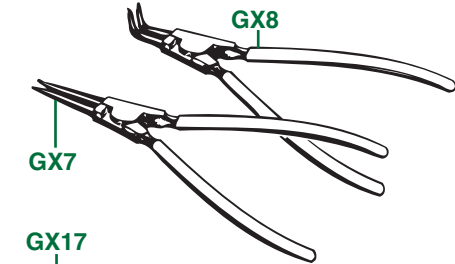
GX6



GX12

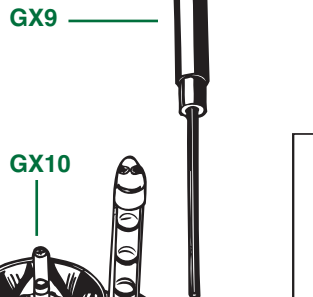


GX13

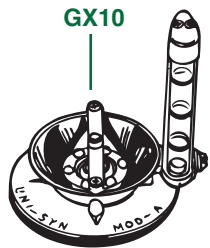


GX7

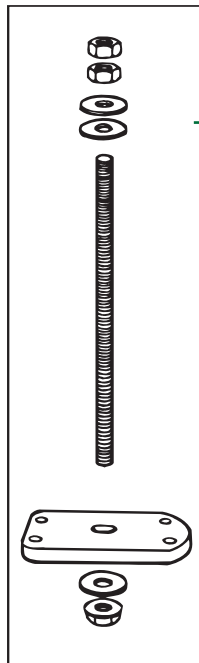
GX8



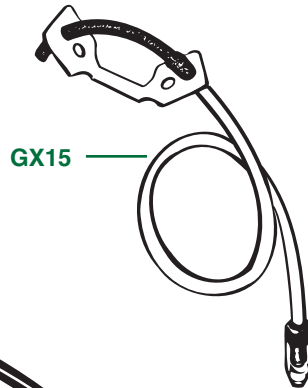
GX9



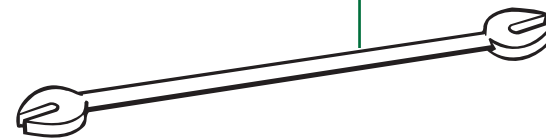
GX10



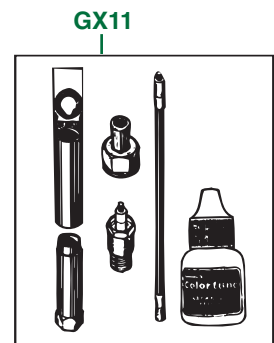
GX14



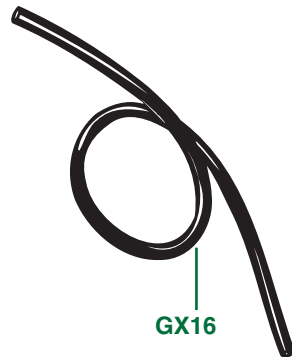
GX15



GX17



GX11



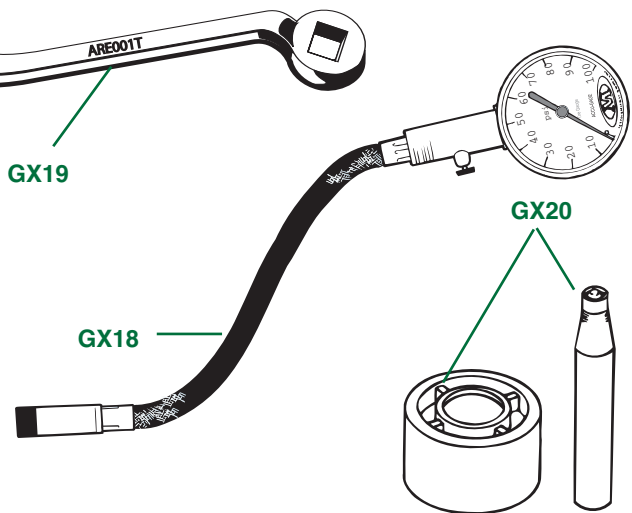
GX16



GX19

ARE001T

GX18



GX20

## SPECIAL SERVICE TOOLS, SECTION IV—STEERING, SUSPENSION, AND MISCELLANEOUS AND ALTERNATIVE TOOLS

Plate No.	Part No.	Description	No. Off
		<b>Note:</b> Special service tools for Triumph cars were manufactured and distributed by the Messrs. V.L. Churchill and Company, now located in Daventry, Northants. Although most of these tools are now unavailable, we are listing them here with illustrations for your information. We have produced special runs of a few of these tools, and we will produce more if demand exists.	
		<b>CHURCHILL SUSPENSION AND STEERING SERVICE TOOLS</b>	
GX1	CLS4221A-5	<b>Adaptor Set</b> , front spring compressor (Used with CL47, Multi-Purpose Hand Press.)	1
GX2	CLS341	<b>Compressor</b> , for fitting steering rack mountings	1
		<b>MISCELLANEOUS CHURCHILL SERVICE TOOLS</b>	
GX3	CLS306	<b>Wrench</b> , brake adjusting	1
GX4	CLMS51	<b>Clamp</b> , trim fastener	1

Plate No.	Part No.	Description	No. Off
		<b>ADDITIONAL AND ALTERNATIVE SERVICE TOOLS</b>	
		<b>SNAP RING PLIERS</b> (Genuine drop forged pliers to last a long time.)	1
GX5	GAT445	<b>Pliers</b> , snap ring, for external lock rings, straight jaws	1
GX6	GAT446	<b>Pliers</b> , snap ring, for external lock rings, offset jaws	1
GX7	GAT447	<b>Pliers</b> , snap ring, for internal lock rings, straight jaws	1
GX8	GAT448	<b>Pliers</b> , snap ring, for internal lock rings, offset jaws	1
		<b>CARBURETOR TUNING AIDS</b>	
GX9	CAT1	<b>Tool</b> , jet adjusting	1
GX10	CAT2	<b>Meter</b> , air flow, Unisyn, for synchronizing multiple carburetors	1
GX11	GUCT500	<b>Colortune Kit</b> (Allows mixture setting by watching colour of combustion inside engine.)	1
		<b>CLUTCH ALIGNMENT TOOLS</b>	
GX12	KB33-19	<b>Tool</b> , clutch alignment	1
		<b>GEARBOX TOOLS</b>	
GX13	RFT118	<b>Driver</b> , for installing closed-cage countershaft needle bearings	1
		<b>FRONT SUSPENSION</b>	
GX14	RFT103	<b>Compressor</b> , front road springs (Our own design; simple, easy, and safe to use; essential for front suspension disassembly.)	1
		<b>BRAKES, WHEELS AND TIRES</b>	
GX15	GIT20	<b>Vizibleed</b> , Girling one-man hydraulic bleeding kit	1
GX16	GI64947041	<b>Tube</b> , rubber, brake bleeding; this is the correct Girling-brand tube for the job if you still use a glass jar and a rubber tube to bleed your hydraulic system	1
GX17	RFT113	<b>Wrench</b> , spoke, for tuning wire wheel spokes	1
GX18	RFT127	<b>Gauge</b> , tire pressure, Flaig brand; formerly Drager; the best gauge we know of	1
GX19	RFT131	<b>WRENCH</b> , combination, brake adjuster and oil drain plug	1
		<b>INTERIOR AND TRIM</b>	
GX20	RFT108	<b>Tool</b> , snap installation; for installing snap buttons and snap sockets to convertible tops and tonneau covers	1