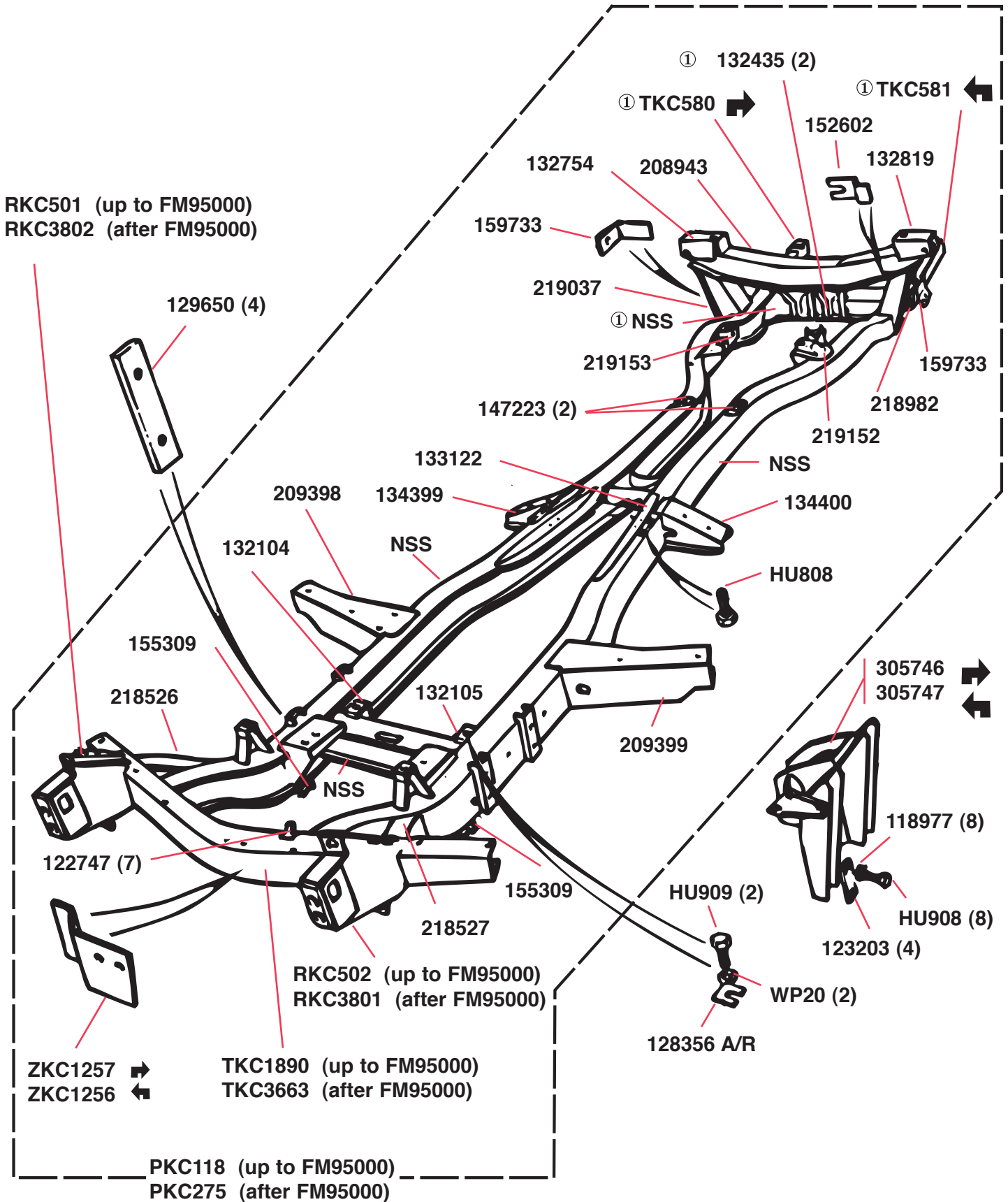
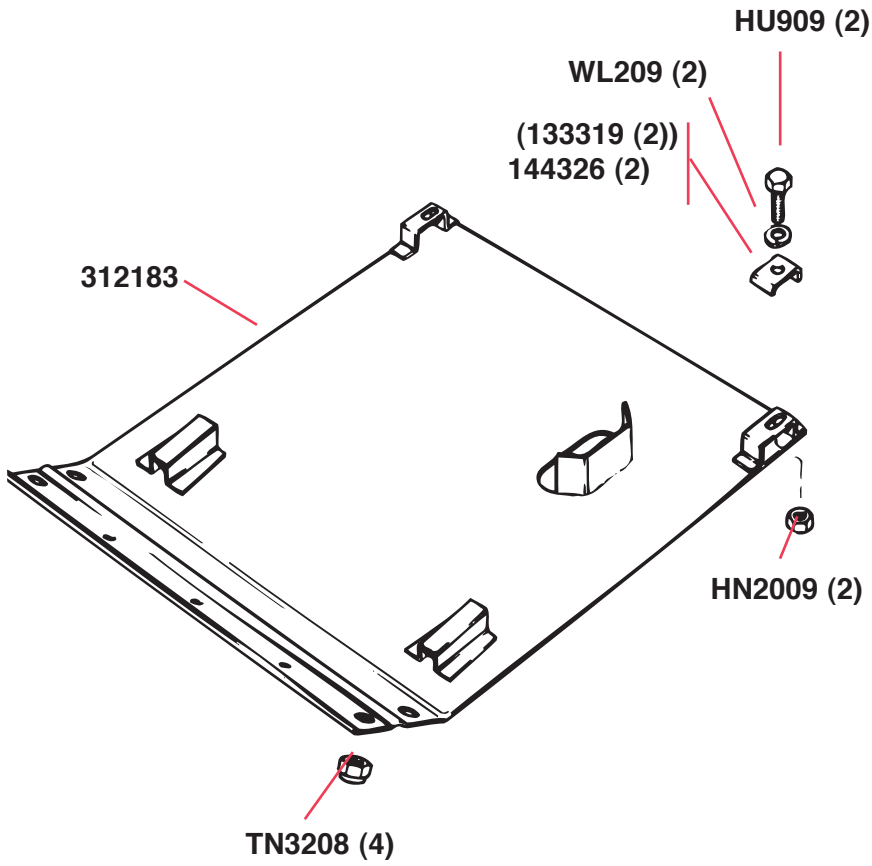


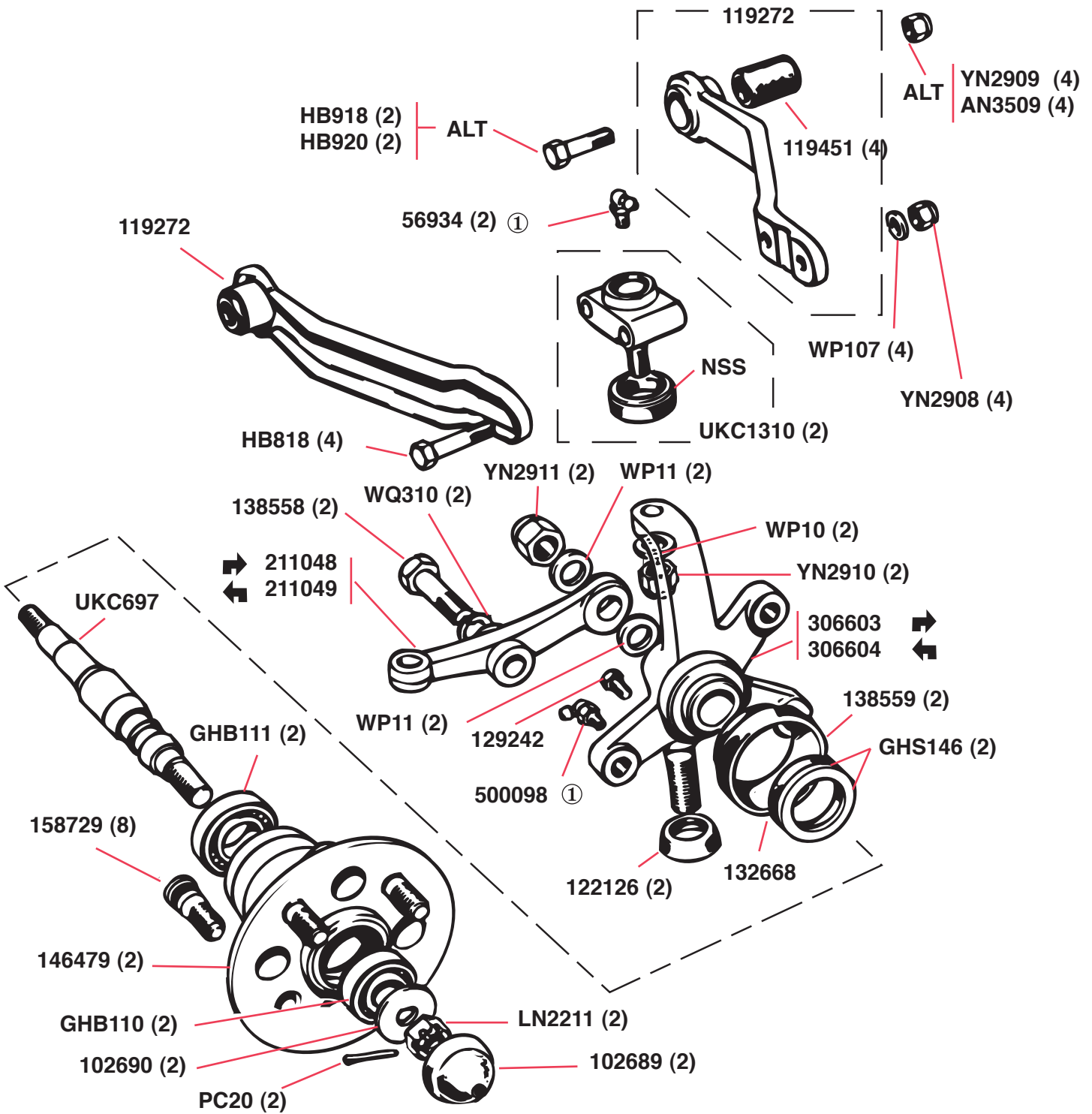
CHASSIS FRAME—U.S.A. Models



CHASSIS FRAME—Skid Plate

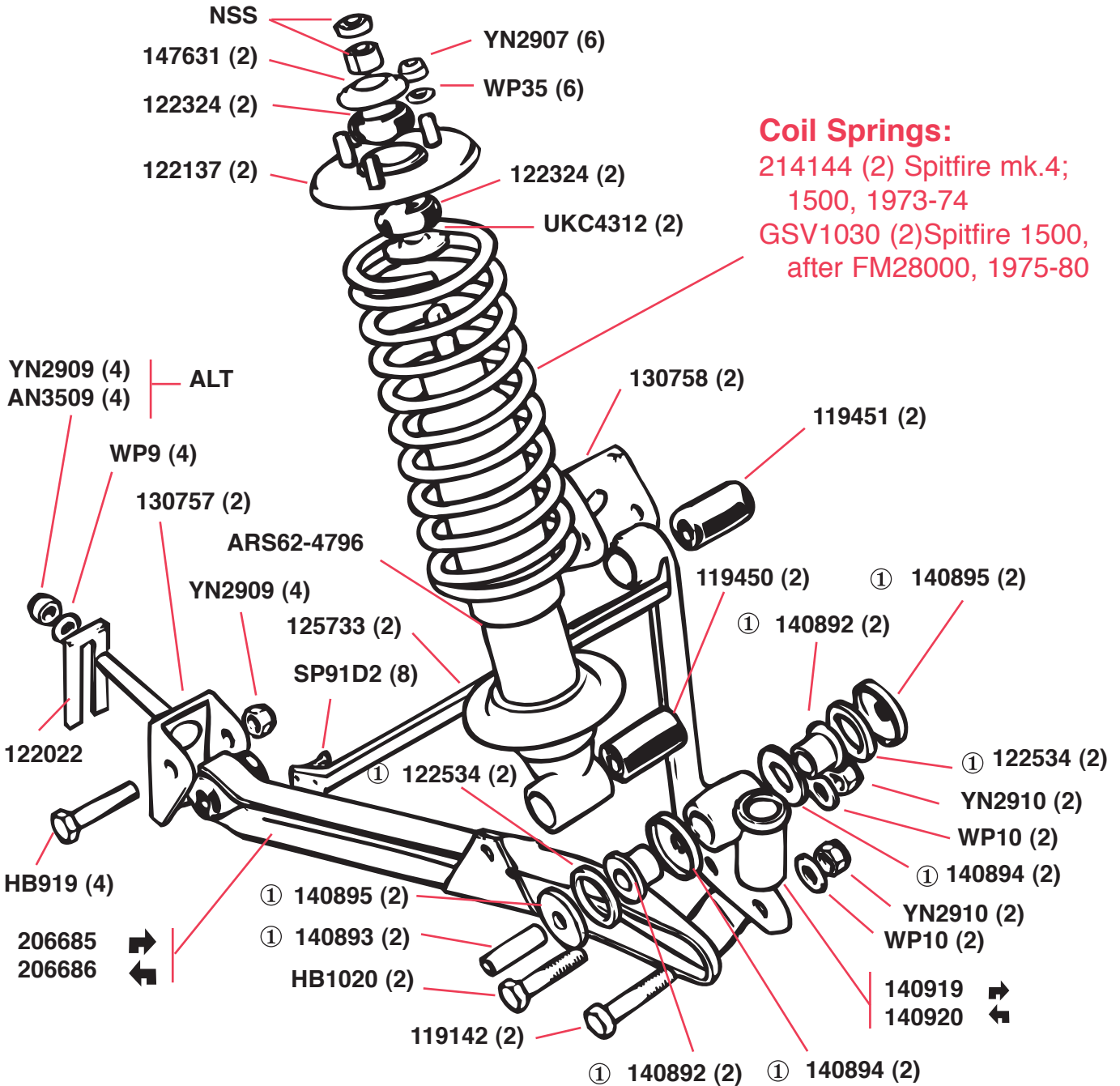


FRONT SUSPENSION—Upper Wishbones, Vertical Link, Hub



See page 113 for a complete selection of front suspension rebuild kits.

FRONT SUSPENSION—Lower Wishbones, Trunnions, Road Spring, and Shock Absorber



See page 113 for a complete listing of front suspension rebuild kits.

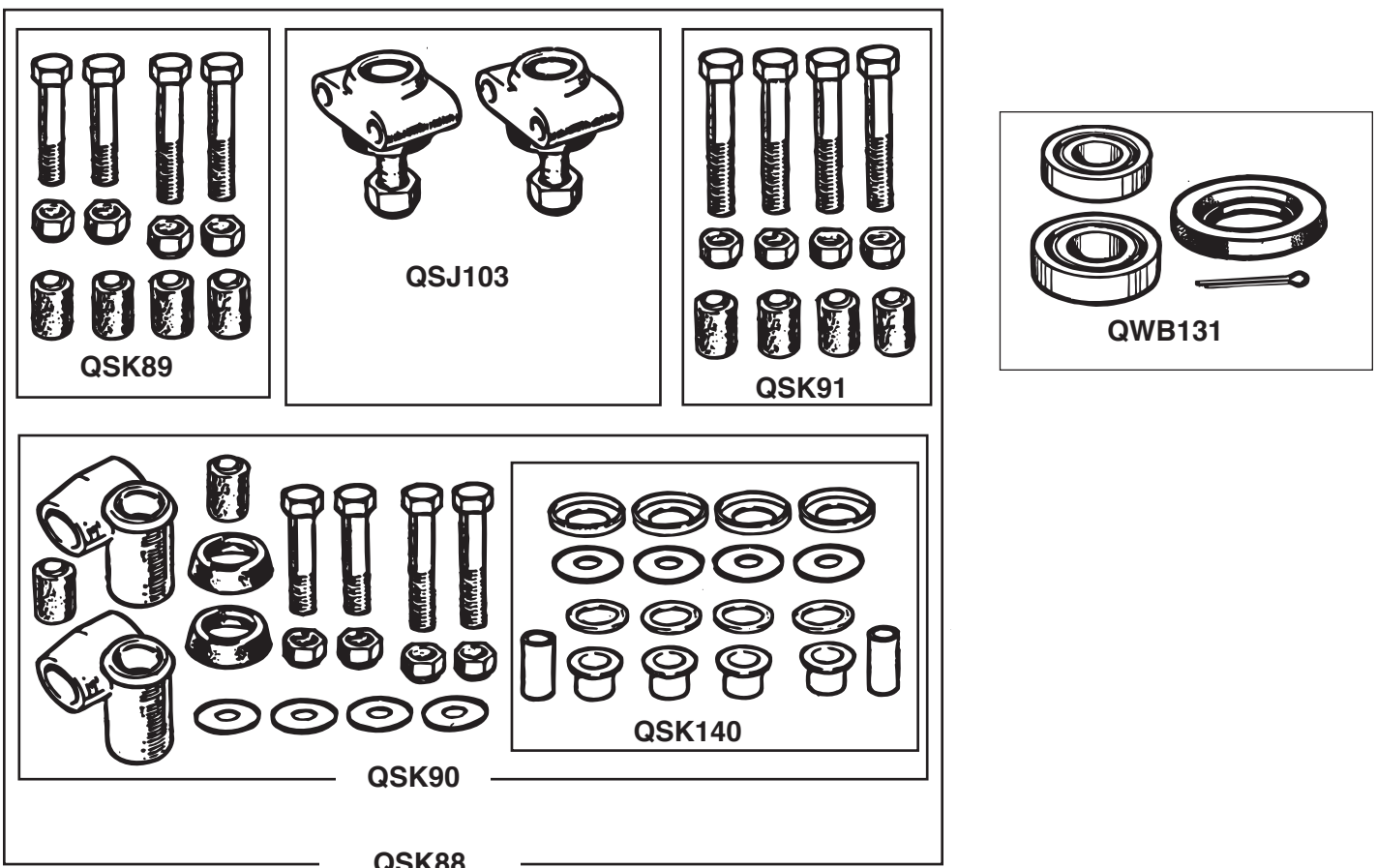
FRONT SUSPENSION—Front Suspension Repair and Rebuild Kits

We stock a wide assortment of front suspension rebuild kits for Spitfire 1500. Each of the kits are illustrated at right, with the components of each kit enclosed within a box. Thus, you may easily order exactly the components you need, whether you are doing specific repairs or a complete front suspension rebuild.

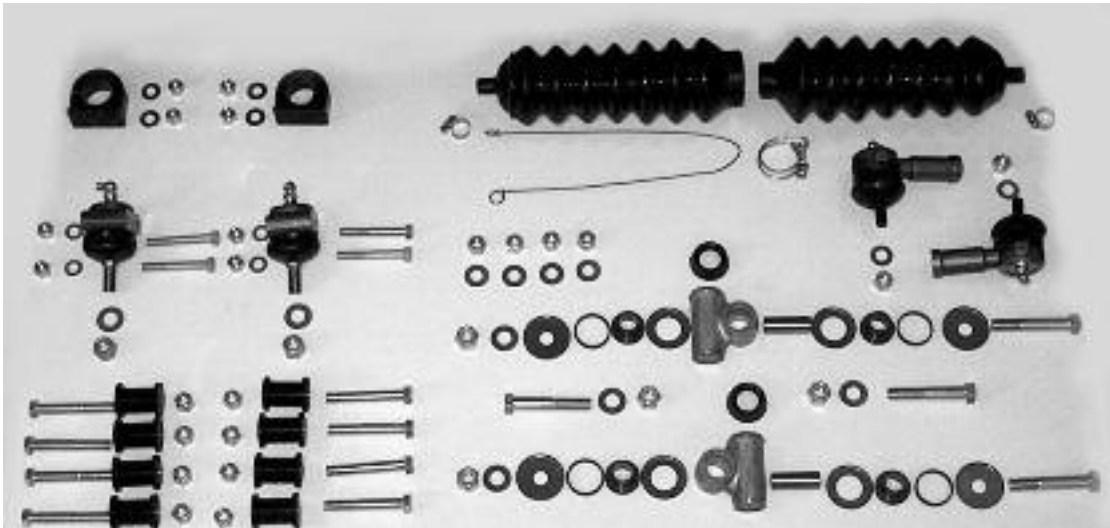
Part No.	Description
QSK89	Upper Inner Rebushing Set (does both sides)
QSK140	Trunnion Bushing Kit (does both sides)
QSK91	Lower Inner Bushing Kit (does both sides)
QSK90	Complete Trunnion Kit —includes all of the components shown for the QSK140 kit, plus both front trunnions, trunnion seals, four bolts, washers and nuts.
QSJ103	Top Ball Joints (includes both joints)
QSK88	Complete Front Suspension Kit —includes all of the components listed above and illustrated at right. Everything you need to do a complete front suspension rebuild (does both sides)
QWB131	Front Bearing Kit (does one side)

TIMKEN FRONT WHEEL BEARING KITS

Part No.	Description
RFK1543	Deluxe Front Wheel Bearing Kit , comprised of Timken bearings, grease seal, grease cap, and new hardware, all Spitfire models (2 required)



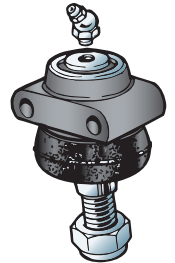
FRONT SUSPENSION AND STEERING—Magic Kits



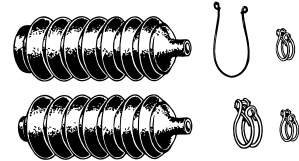
RFK1341



140920



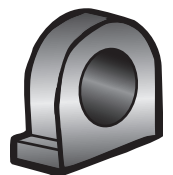
104552



RFK135



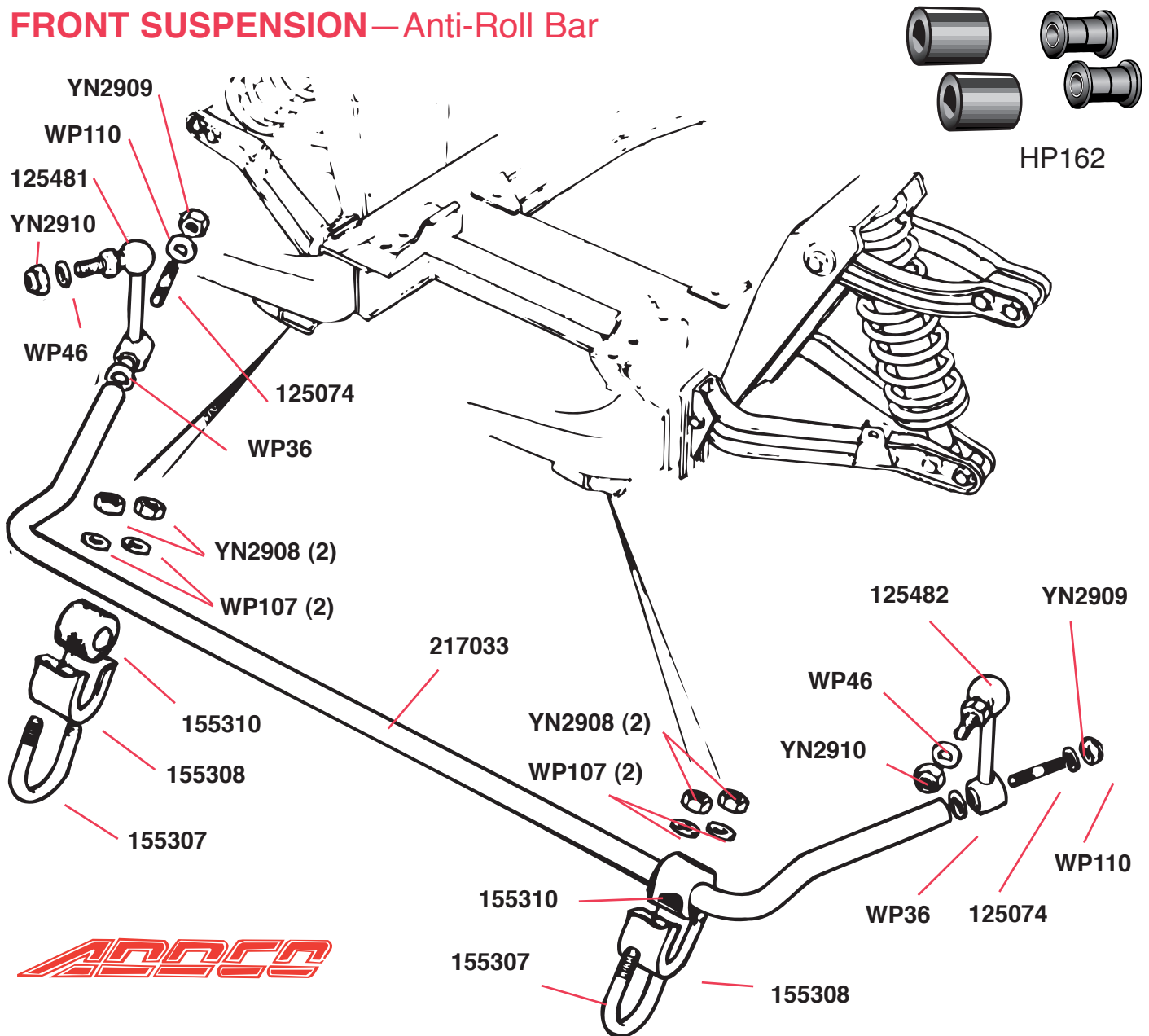
139386



139386/U

Part No.	Description
RFK1226	MAJOR REBUILDING KIT , front suspension, all GT6, Spitfire; includes rubber bushes and everything else indented below except urethane bush kit and urethane steering rack mounts
RFK1341	MAJOR REBUILDING KIT , front suspension, all GT6, Spitfire; includes high-performance urethane bushes and everything indented below except rubber bush kit and rubber steering rack mounts
RFK1342	Rebushing Kit , rubber bushes, steel bushes, and washers for all front suspension pivots
RFK1343	Rebushing Kit , high-performance urethane bushes, steel bushes, and washers for all front suspension pivots
104552	Top Ball Joint , with rubber boot, and grease fitting
140920	Lower Trunnion , LH
140919	Lower Trunnion , RH
122126	Seal , rubber, trunnions to vertical links
146728	Tie-rod End , with rubber boot and grease fitting
RFK135	Boot Kit , steering rack, with correct clips
139386	Mounting , steering rack, original rubber
139386/U	Mounting , steering rack, high-performance urethane
RFK1487	Hardware Kit , front suspension; includes hardware for upper and lower suspension pivots, trunnion and ball joint installation, lower shock fulcrum, etc.; seventy-one hardware pieces

FRONT SUSPENSION—Anti-Roll Bar



ADDCO FRONT ANTI-ROLL BAR: Includes only the anti-roll bar

Part No.	Description
ADDCO707	Addco Anti-Roll Bar, front, Spitfire mk. 4, 1500, 1-inch diameter

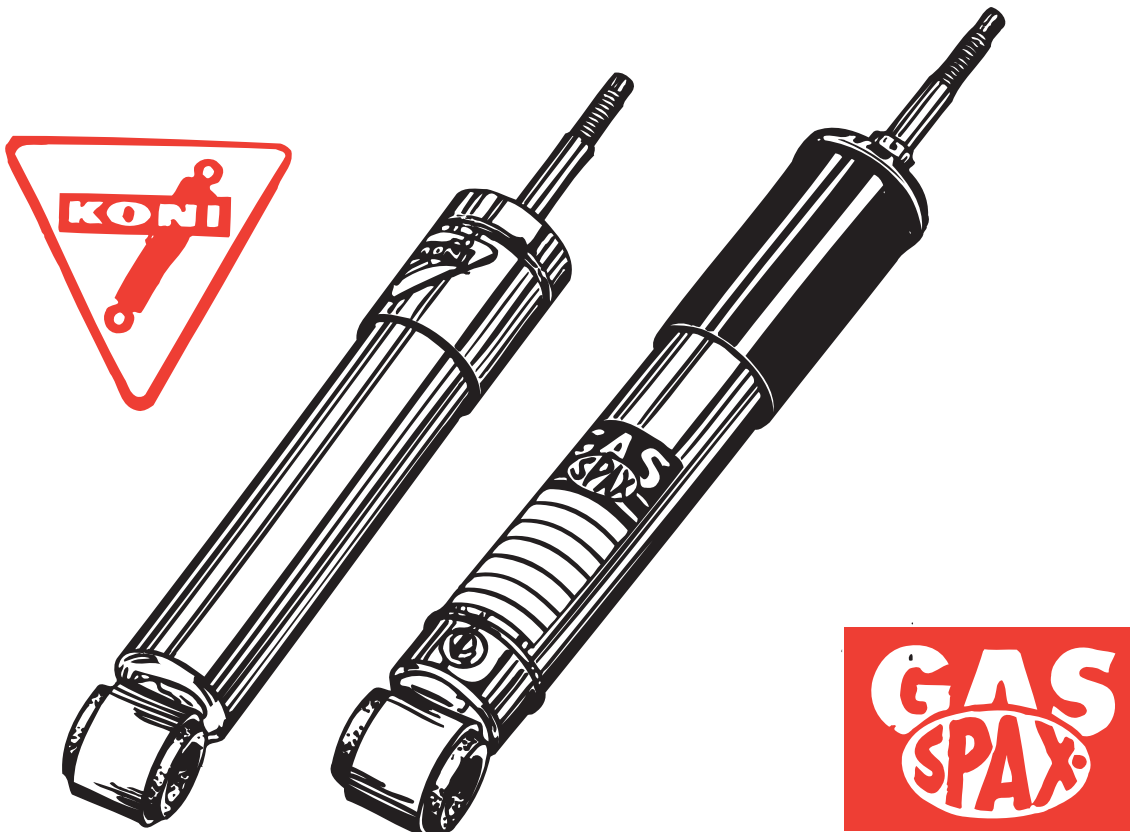
ADDCO REAR ANTI-ROLL BAR KITS: Includes anti-roll bar, all mounting hardware, and complete instructions for installation.

Part No.	Description
ADDCO235SP	Addco Anti-Roll Bar Kit, rear, Spitfire mk. 4, 5/8-inch diameter
ADDCO235	Addco Anti-Roll Bar Kit, rear, Spitfire 1500, 5/8-inch diameter

HIGH-PERFORMANCE URETHANE SWAY BAR MOUNTING KIT

Part No.	Description
HP162	Sway Bar Mounting Kit; includes two urethane locating bushes and two urethane link bush assemblies with steel sleeves

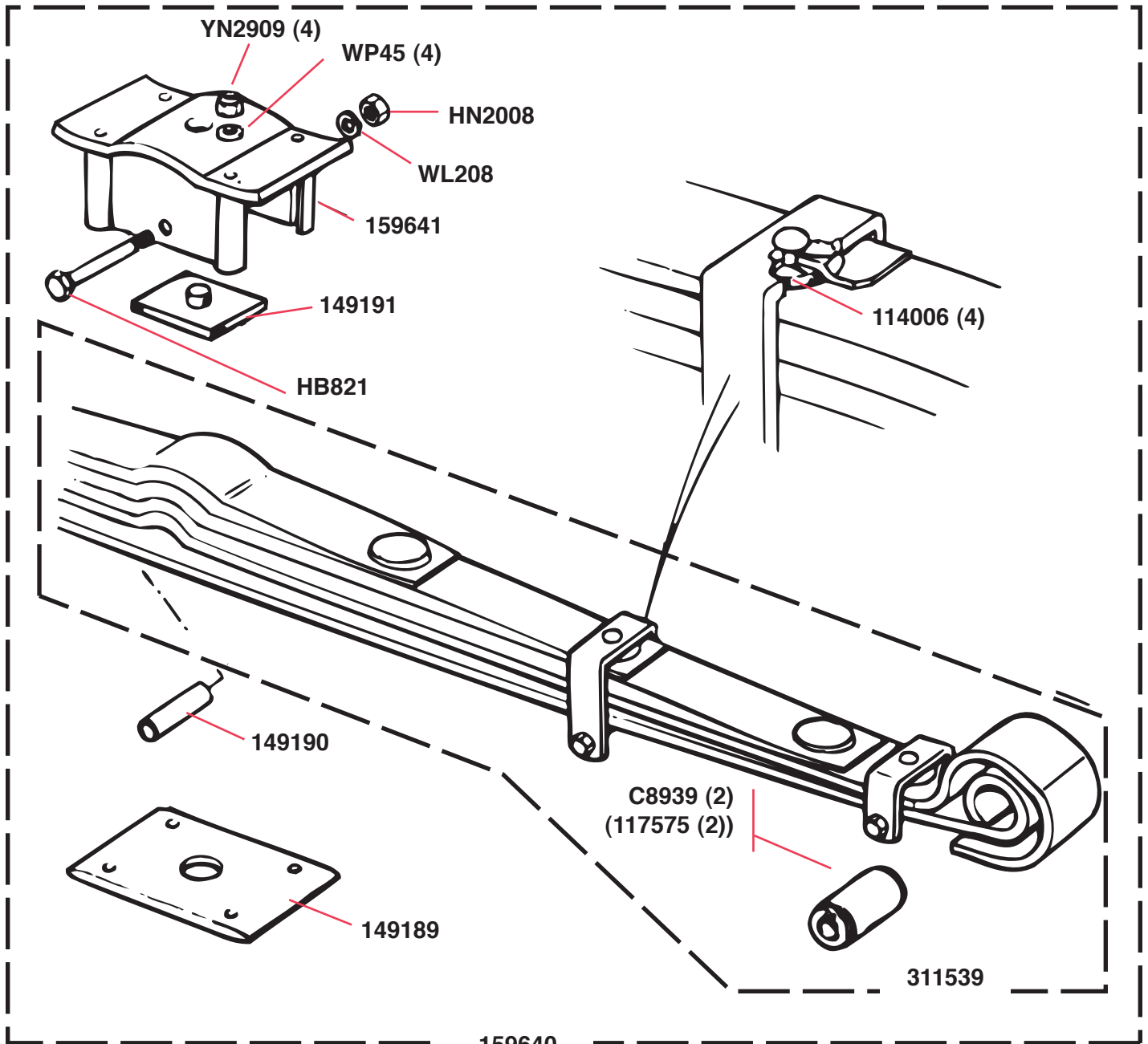
FRONT AND REAR SUSPENSION—KONI and SPAX Shock Absorbers



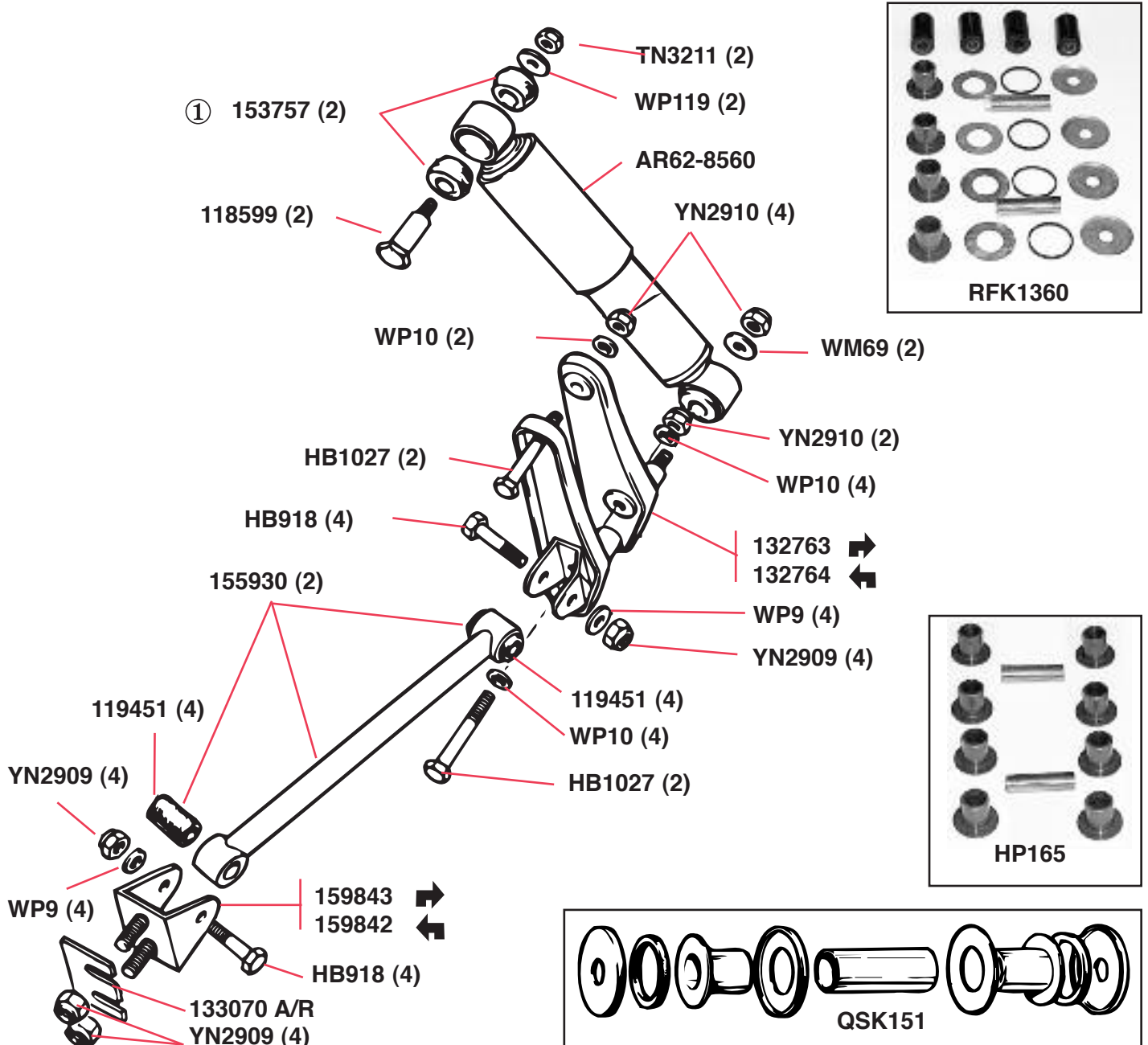
Koni shocks have a superb reputation, and are used on most Formula 1 racing cars and other high-performance cars. Spax shocks also have developed a reputation in competition circles, but they are a nice compromise with Koni's for several reasons. First, they are adjustable without having to remove the shocks from the car; and second, they are a little less expensive while maintaining a high standard of quality. The Roadster Factory offers both brands for those who demand higher performance than the stock shocks offer.

Part No.	Description
	FRONT TUBE SHOCK ABSORBERS
ARS62-4796	Shock Absorber , stock grade, all Spitfire, all GT6 (2 required)
KONI80H-1388	Shock Absorber , Koni brand, all Spitfire, all GT6 (2 required)
SPAX105	Shock Absorber , Spax brand, all Spitfire, all GT6 (2 required)
	REAR TUBE SHOCK ABSORBERS , all Spitfires and all GT6 with swing axle rear suspension
AR62-8560	Shock Absorber , stock grade, all Spitfires, GT6 mk.1, GT6 mk.3, 1973 only (2 required)
KONI80C-1389	Shock Absorber , Koni brand, all Spitfires, GT6 mk.1, GT6 mk.3, 1973 only (2 required)
SPAX202	Shock Absorber , Spax brand, all Spitfires GT6 mk.1, GT6 mk.3, 1973 only (2 required)

REAR SUSPENSION—Rear Road Spring



REAR SUSPENSION—Thrust Bar and Shock Absorber



Part No.	Description
RFK1359	REAR SUSPENSION RE-BUSHING KITS , stock grade rubber bushes; includes kit and components as indented below
QSK151	Trunnion Re-bushing Kit ; includes nylon and steel bushes, dust shields, and seals
119451	Bush , rubber, radius arms
RFK1360	REAR SUSPENSION RE-BUSHING KITS high-performance urethane bushes; includes kit and components as indented below
QSK151	Trunnion Re-bushing Kit ; includes nylon and steel bushes, dust shields, and seals
HP165	Radius Arm Re-bushing Kit ; includes four urethane bush assemblies with steel sleeves