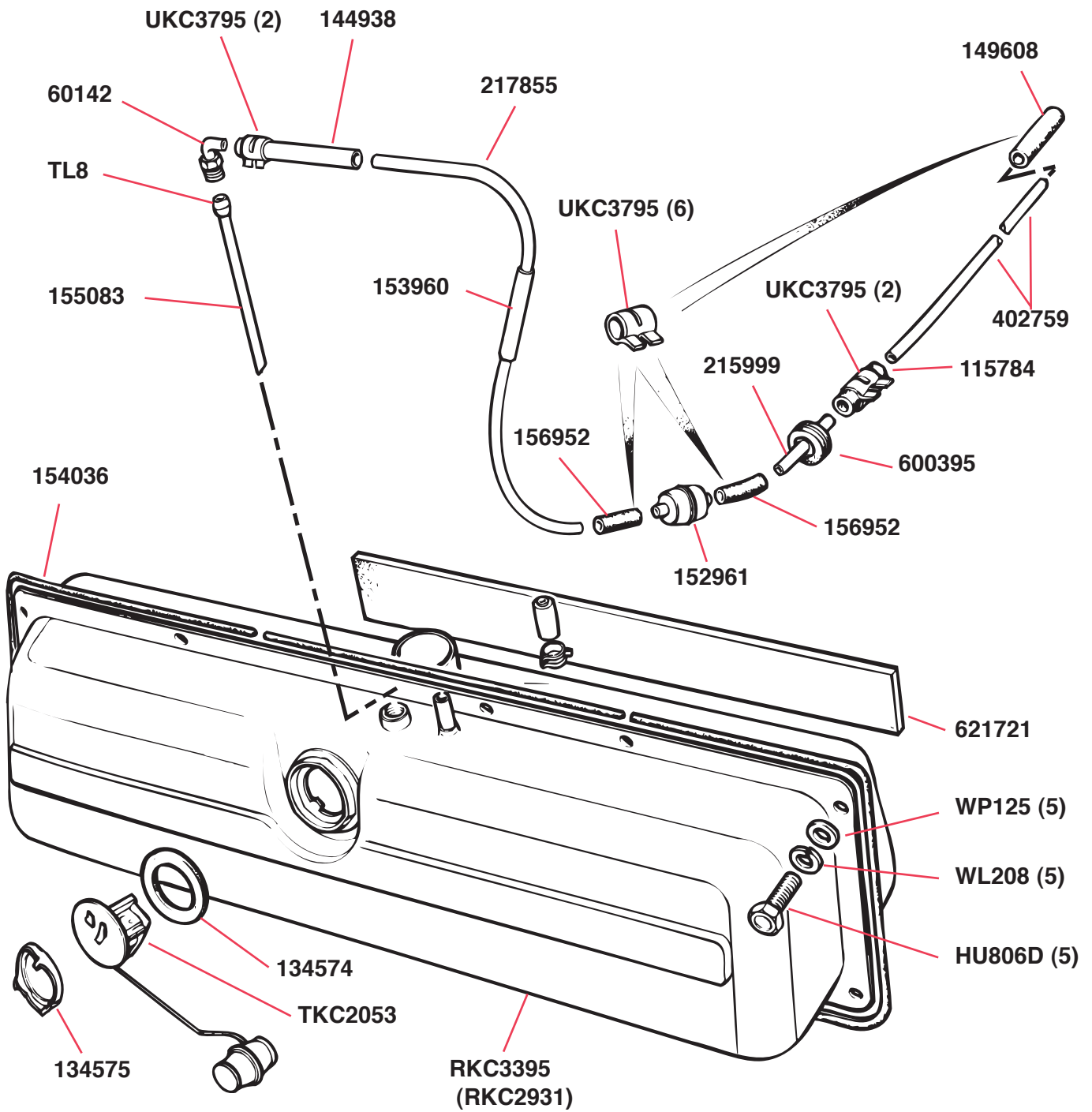
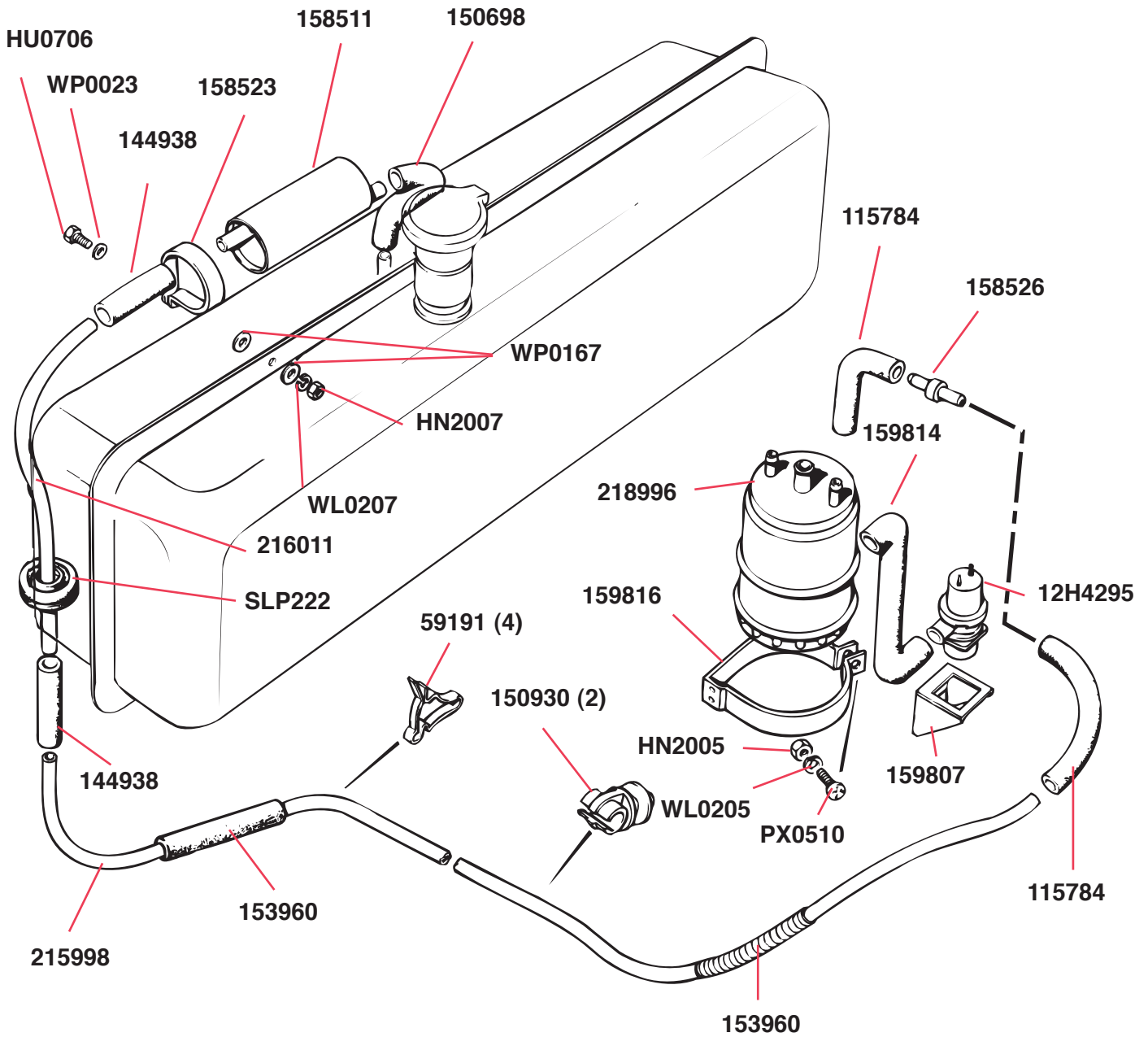


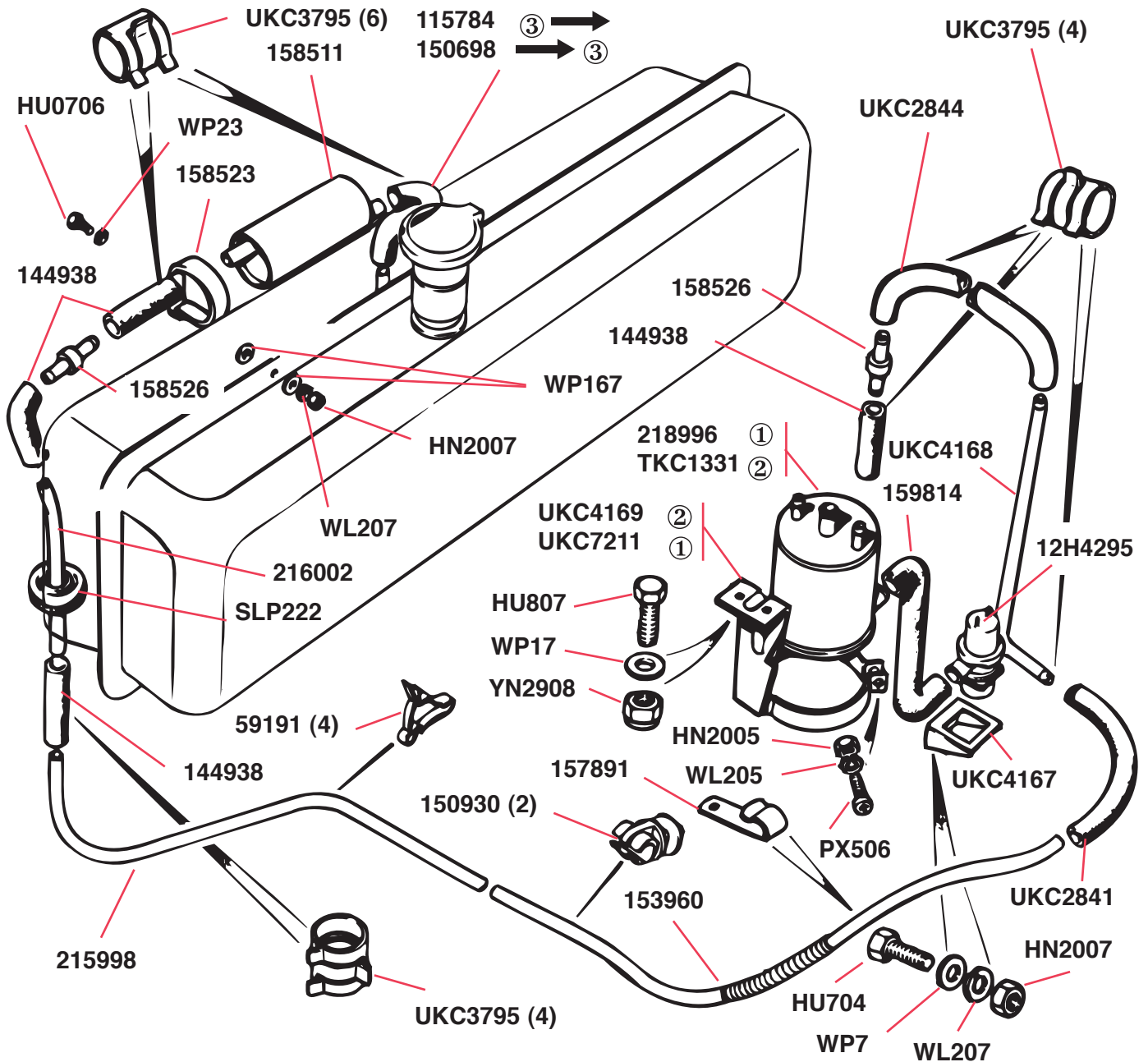
FUEL SYSTEM—Tank and Lines—All U.S.A. Models



FUEL SYSTEM—Evaporative Loss Control—All U.S.A. Models—Up To End of 1974 Model Year



FUEL SYSTEM—Evaporative Loss Control—U.S.A. Federal Models
From End of 1974 Model Year Up To Commission No. FM60,006
—California Models From End of 1974 Model Year Up To Commission
No. FM70,001

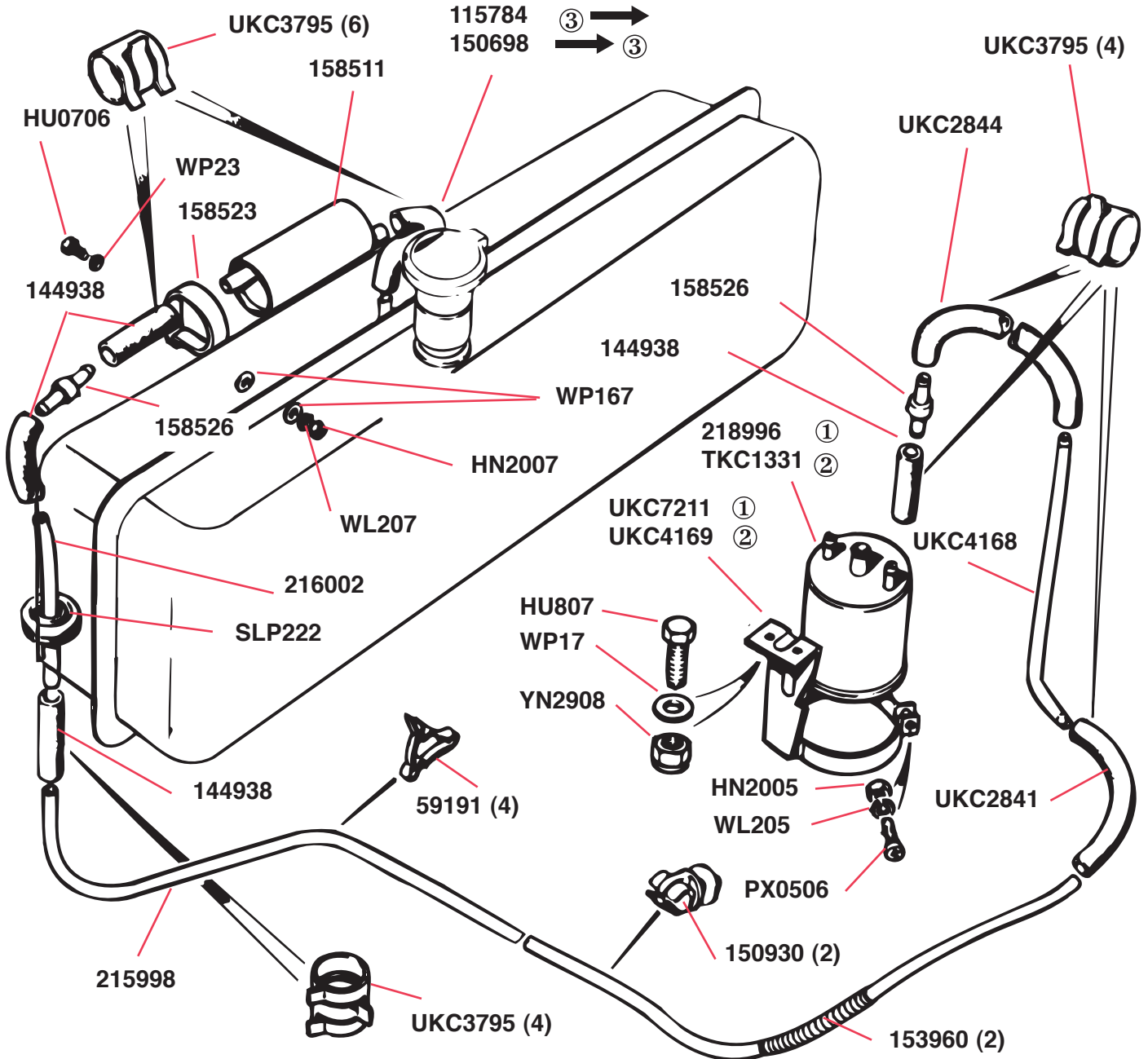


Details marked ① may be used alternatively in sets to details marked ②.

③ Commission no. FM47,476.

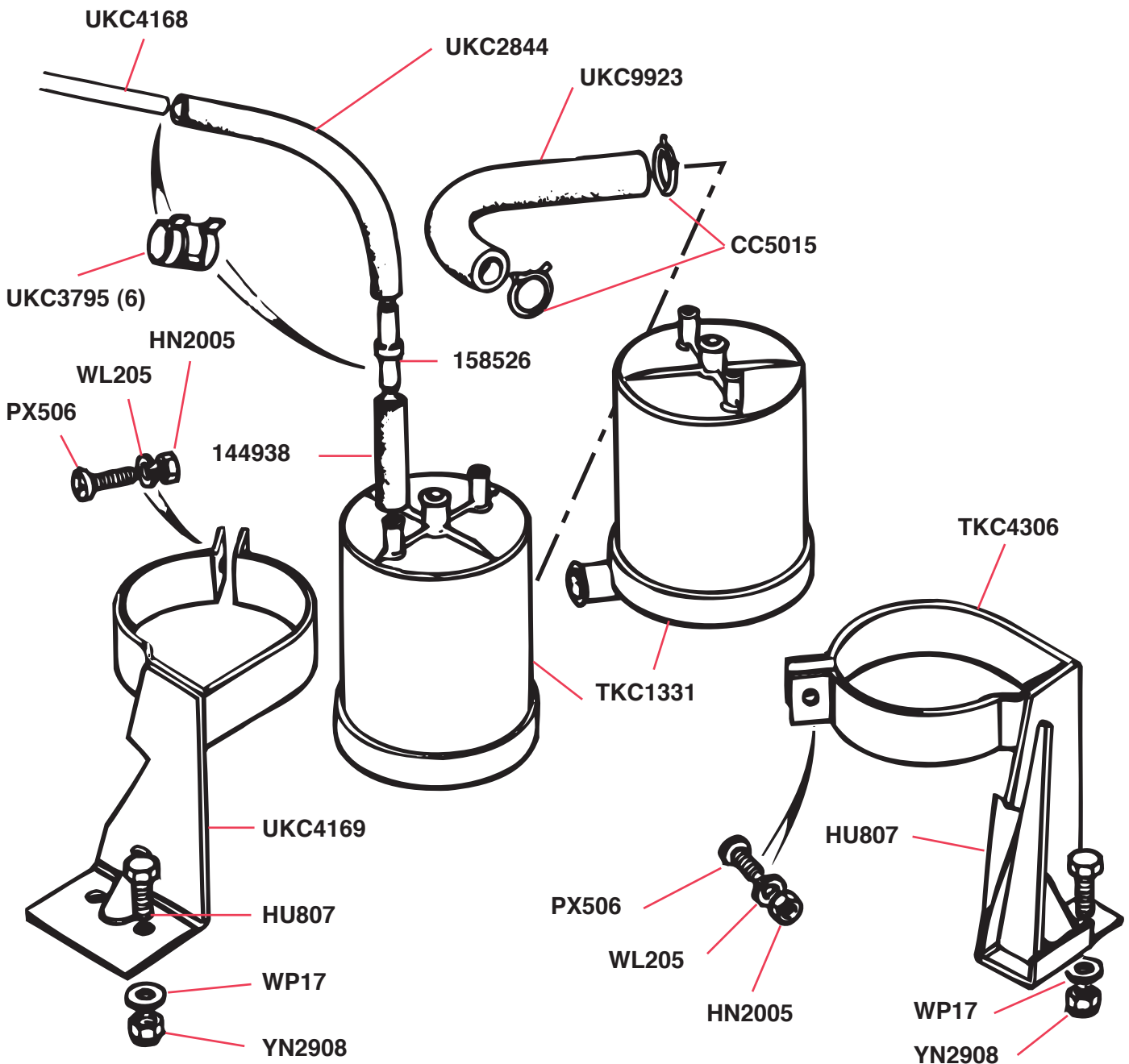
④ Commission no. FM60,006

FUEL SYSTEM—Evaporative Loss Control—U.S.A. Federal Models—From Commission No. FM60,006 Up To FM70,001



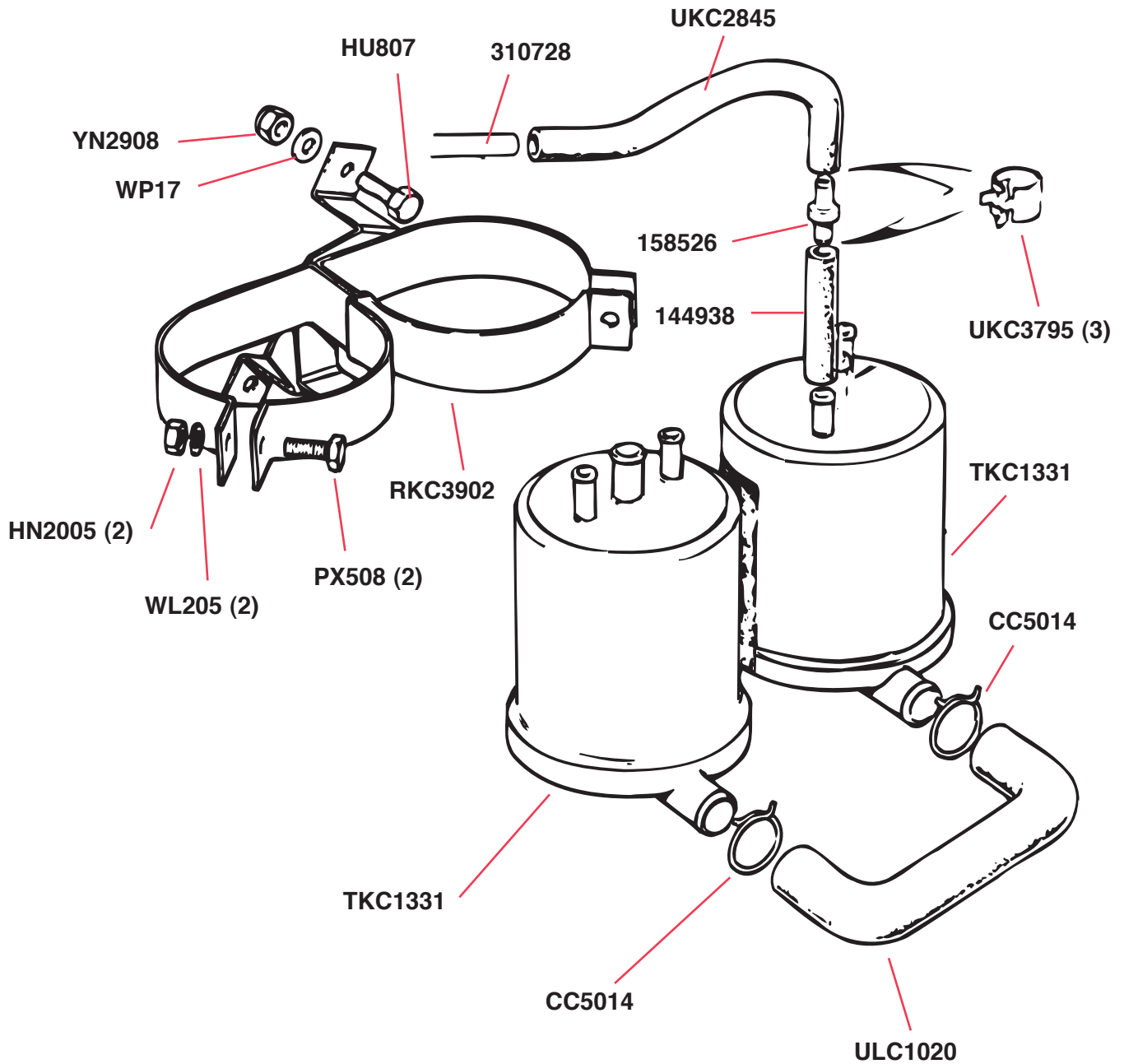
Details marked ① may be used alternatively in sets to details marked ②.
 ③ Commission no. FM47,476.

**FUEL SYSTEM—Evaporative Loss Control—U.S.A. Federal Models
—From Commission No. FM70,001 Up To FM95,001**

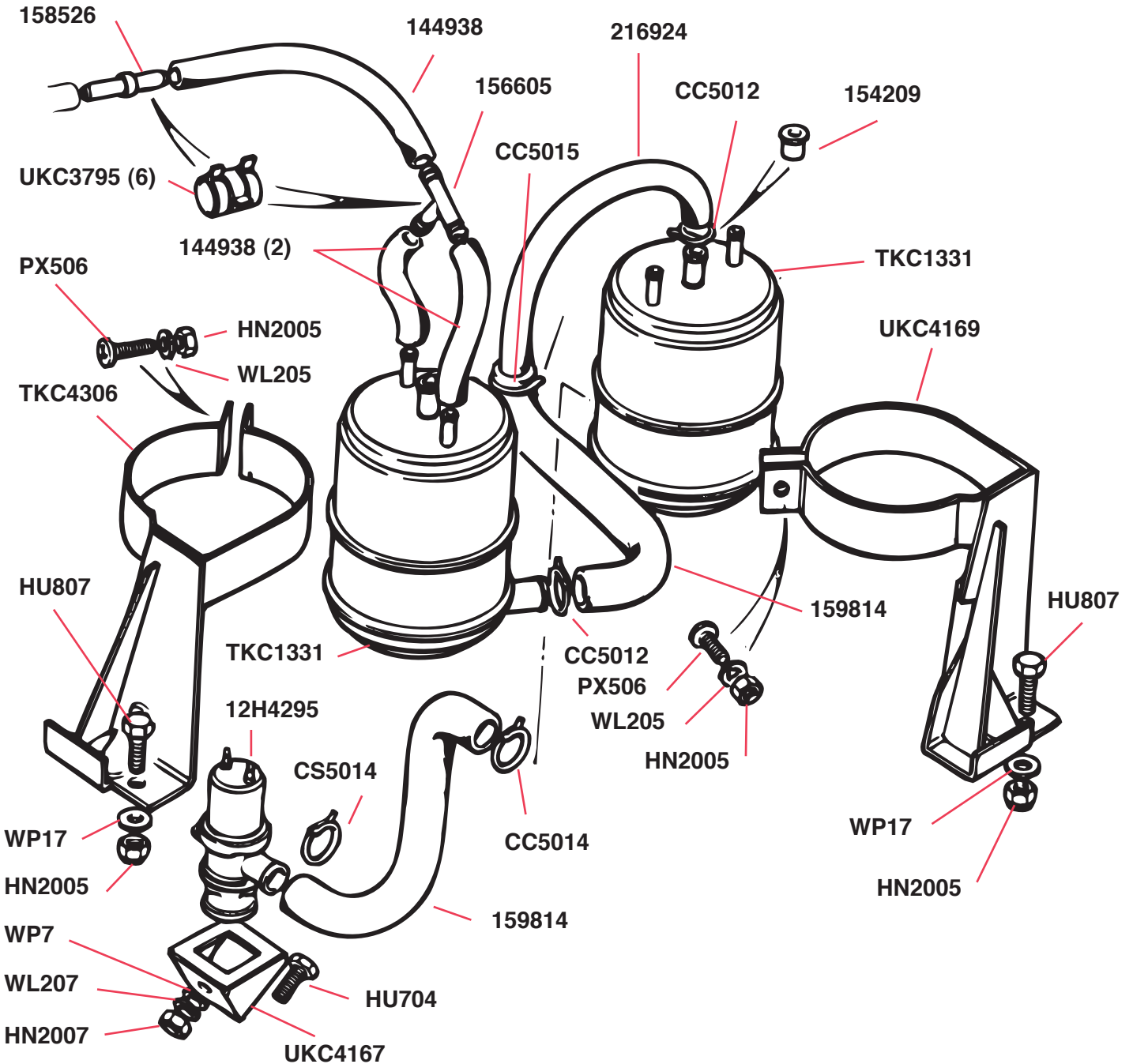


Details not illustrated in this drawing should be identical to the previous drawing,

**FUEL SYSTEM—Evaporative Loss Control—U.S.A. Federal Models
—From Commission No. FM95,001 Up To FM110,000**

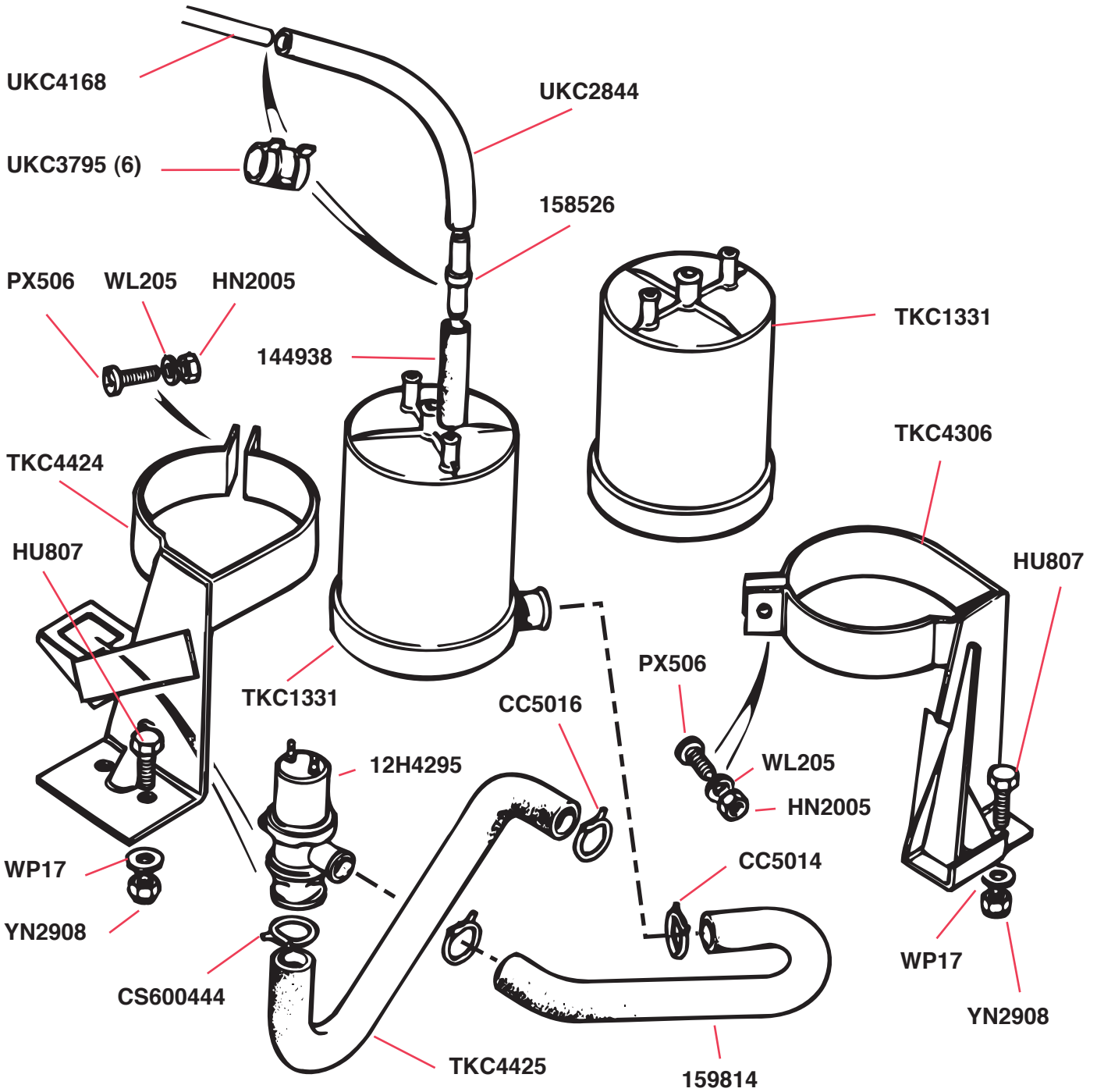


**FUEL SYSTEM—Evaporative Loss Control—U.S.A. California Models
—From Commission No. FM70,001 Up To ?**



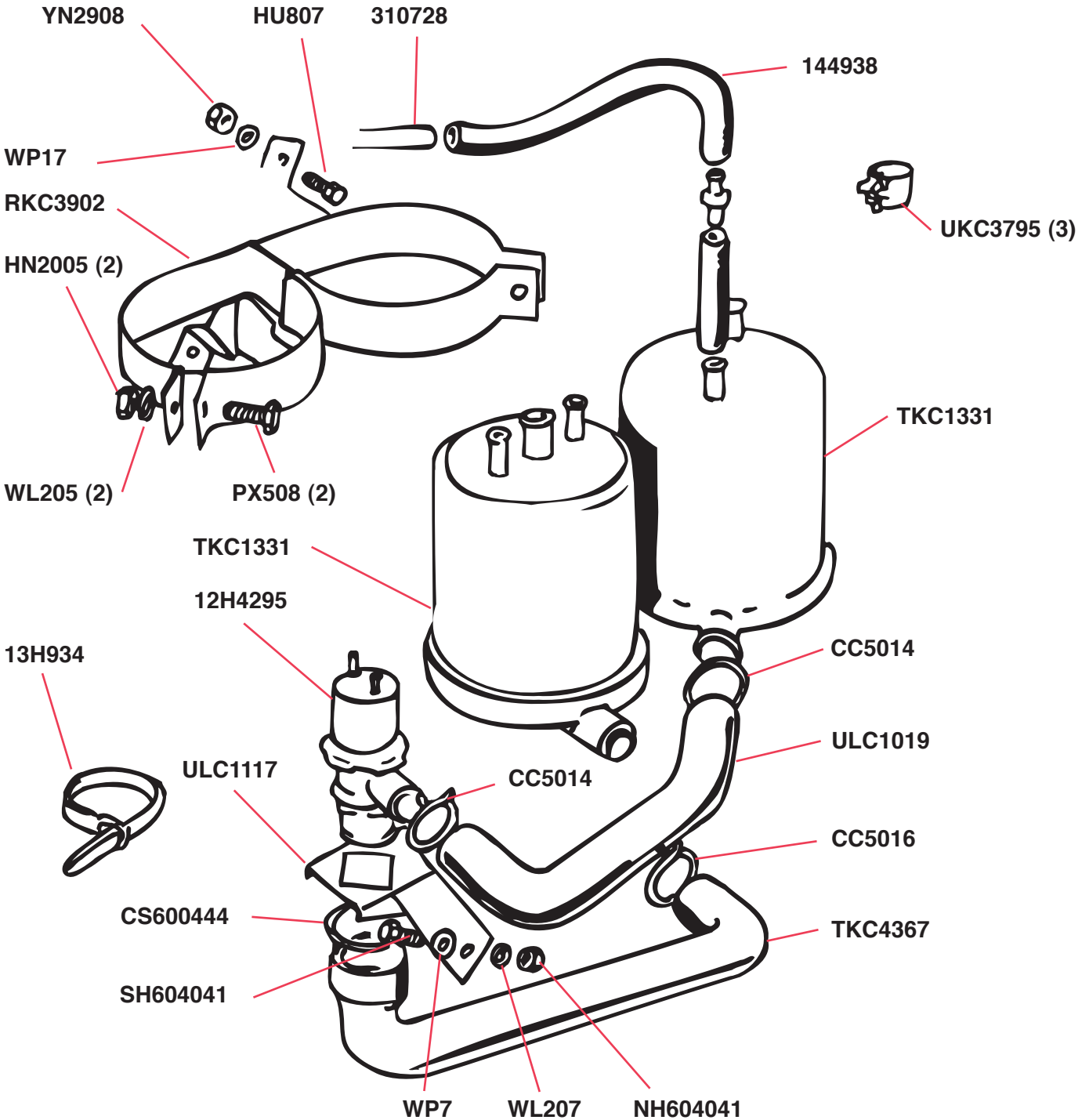
It is unclear from the factory publications at what point they stopped using the components pictured here and began using the arrangement shown in the next illustration. Compare the illustrations with the components on your car to be sure you are ordering the correct parts.

**FUEL SYSTEM—Evaporative Loss Control—U.S.A. California Models
—From Commission No. FM? Up To FM95,000UC Approximately**

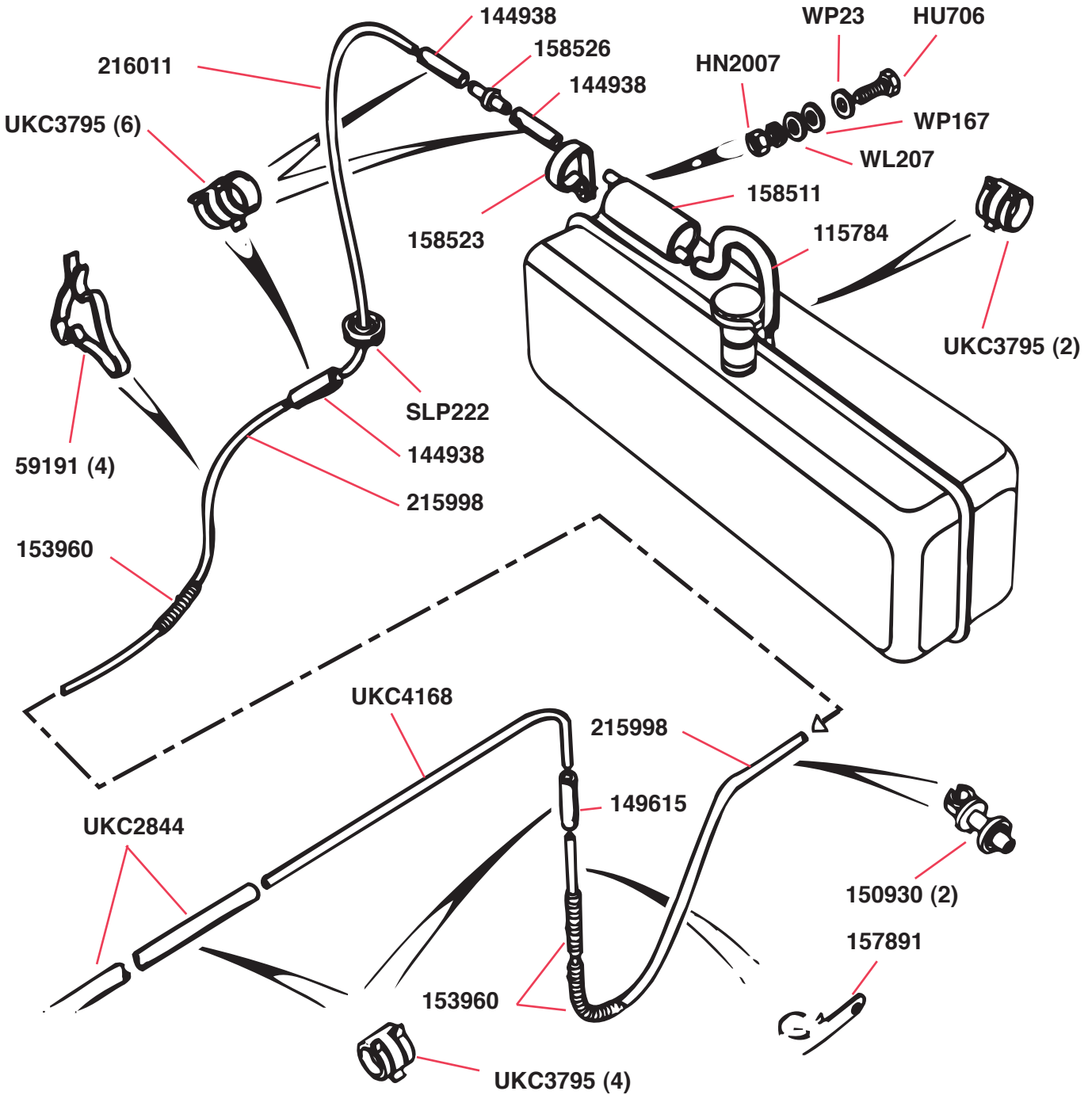


Exact commission nos. for this fitment are not clear from the factory literature. Compare this illustration, along with the preceding and following one, with your car to be sure you are ordering the correct parts.

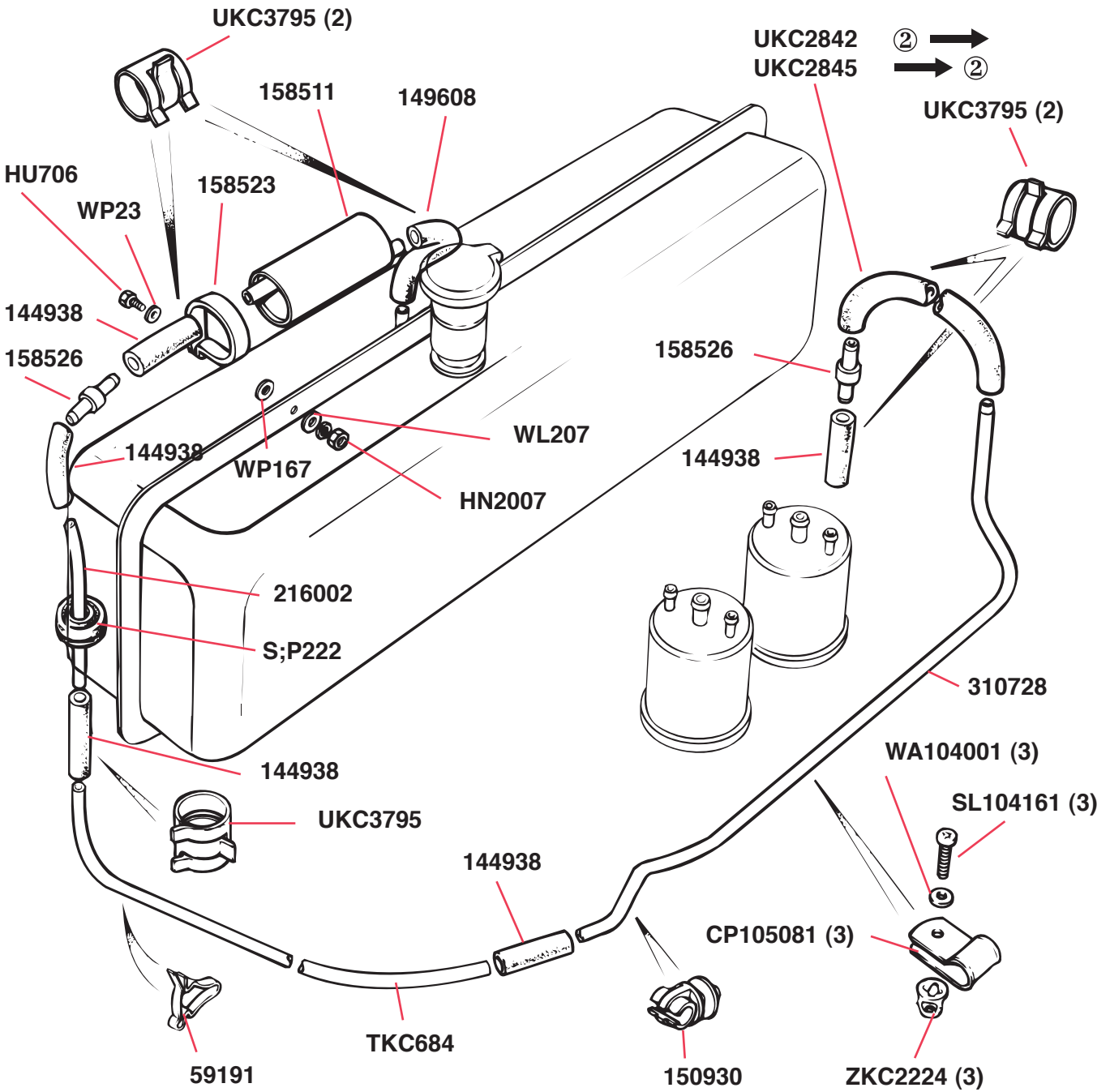
**FUEL SYSTEM— Evaporative Loss Control—U.S.A. California Models
After Commission No. FM95,001UC—Federal Models After
Commission No. FM110,001U**



FUEL SYSTEM—Evaporative Loss Control—Tank to Cannister
—U.S.A. California Models—From Commission No. FM70,001UC Up
To FM95,001UC

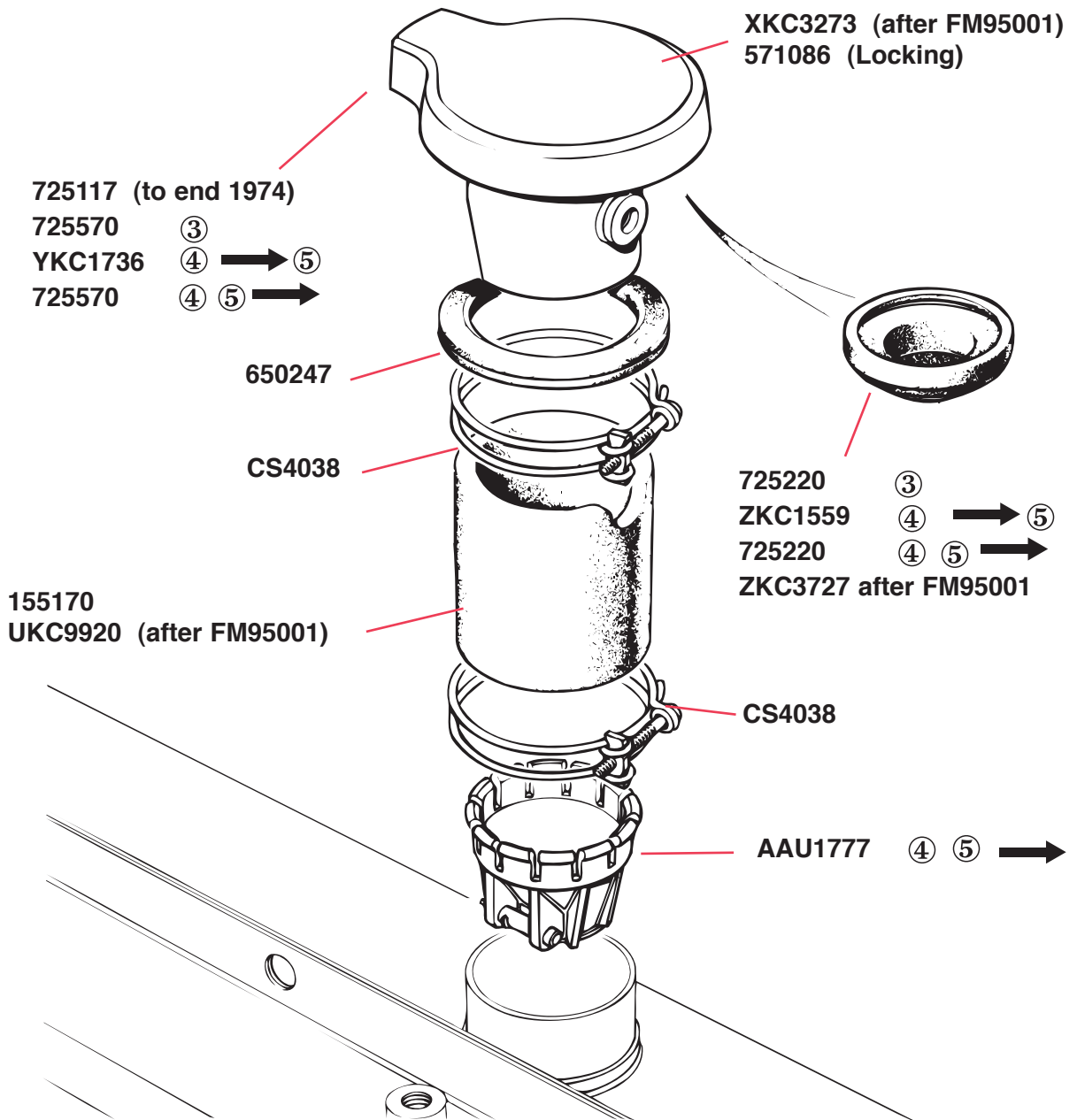


FUEL SYSTEM—Evaporative Loss Control—Tank to Cannister —U.S.A. Federal and California Models—After Commission No. FM95,001



② Commission no. FM99,058

FUEL SYSTEM—Filler Cap—All U.S.A. Models



- ③ Used in U.S.A. Federal Unit
- ④ Used in U.S.A. California Models
- ⑤ Commission no. FM40,001