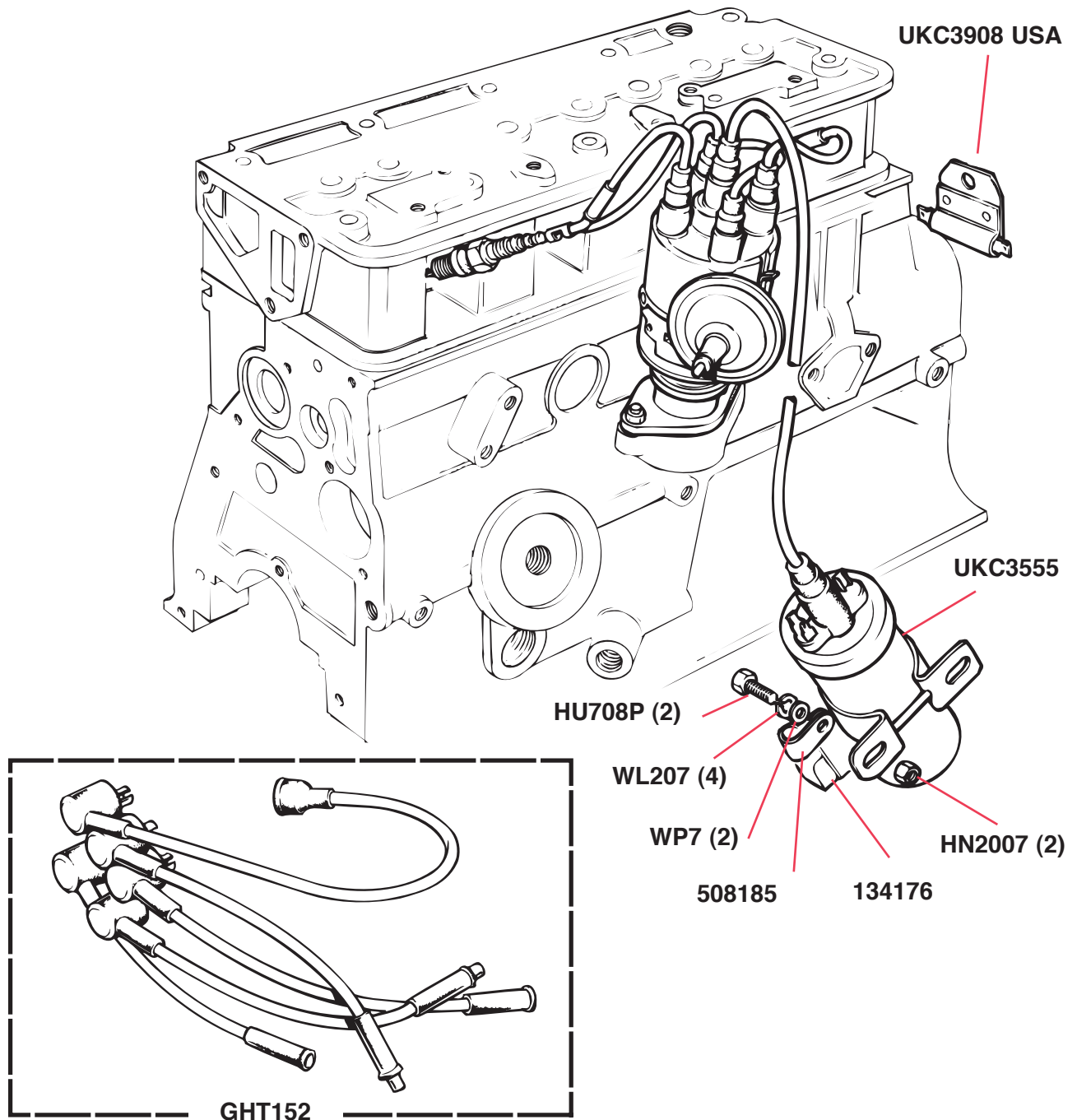


ELECTRICAL—Spark Plugs. Ignition Wires and Coil



Part No.	Description
NGKBP5ES	NGK Spark Plug , for those who prefer the famous NGK Brand. Used in may racing cars.
CHN12Y	Champion Spark Plug , the brand that was supplied by Triumph at the factory
GHT152	Ignition Cable Set , suppression core with British Leyland green insulation, rubber boots, and brass terminals

ELECTRICAL—Distributors

The Spitfire 1500 models were originally fitted with Lucas distributors of more or less conventional design. Some years ago, Lucas introduced a new line of distributors and amplifiers to replace the original style distributors (although some repair parts remain available for the original distributors, at least in the short run). Lucas called these new replacement distributors "Constant Energy Kits", and they consist of a new distributor of a different design than the original, along with a separate amplifier. These constant energy kits were said to be much more reliable than the original style distributor.

Quite recently, Lucas announced that they were discontinuing the entire line of constant energy kits, and, at least at this point, they are offering no replacement system. We at The Roadster Factory have searched for a suitable replacement, and it appears as though we have a winner! We now offer an Pertronix electronic ignition system which should provide superior performance for the Spitfire applications.

We have done our best to keep in stock the largest possible selection of repair components for both the original and the constant energy systems, so we are listing the major components of each system in the following sections. You may simply check the part numbers listed against our most recent general price list to determine their availability. If you have further questions about any of these systems, do not hesitate to telephone, as our salespeople have no doubt dealt with those questions before and can be of great assistance to you.

ELECTRICAL—Original Distributors, Components

PART NUMBERS OF ORIGINAL DISTRIBUTORS

Spitfire Model	Original Distributor (Lucas No.)
All U.S.A. 1975	LU41593
Federal Models 1976	LU41646
California Models 1976	LU41656
Federal Models 1977-79	LU41697
California Models 1977-79	LU41698
All U.S.A. Models 1980	LU41698

Note: Lucas part numbers are stamped onto the castings of each of their distributors.

PART NUMBERS OF ORIGINAL DISTRIBUTOR COMPONENTS

Dist No	LU41593	LU41646	LU41656	LU41697	LU41698
Clamp plate	LU54410620	LU54410620	LU54410620	LU54410620	LU54410620
Cap	LUDC8	LUDC8	LUDC8	LUDC8	LUDC8
Carbon/Spring	LU54423441	LU54423441	LU54423441	LU54423441	LU54423441
Rotor Arm	LURA4	LURA4	LURA4	LURA4	LURA4
Timing Rotor	LU54427066	LU54427066	LU54427066	LU54427066	LU54427066
Anti-flash Cover	LU54425769	LU54427424	LU54425769	LU54425769	LU54425769
Pick-up/Base Plate Assy.	LU54427099	LU54427099	LU54427099	LU54427099	LU54427099
Shaft Plate/Mechanism	LU54427473	LU54427473	LU54427473		
Auto Advance Springs	LU54428604	LU54428604	LU54428604		
Amp./Vac. Assy.	LU54427183	LU54429455	LU54429454	LU54429780	LU54429455
Vacuum Unit	LU54426551	LU54427198	LU54426551	LU54429788	LU54429508
Driving dog	LU420620	LU420620	LU420620		
'O' ring seal	LU188639	LU188639	LU188639	LU188639	LU188639

ELECTRICAL—Distributor—Constant Energy Kits
CONSTANT ENERGY KIT APPLICATIONS

Spitfire Model	Use Constant Energy Kit	Constant Energy Distributor	Constant Energy Amplifier
All U.S.A., 1975	LU60600703	LU41804	LU47261
Federal Models, 1976	LU60600705	LU41805	LU47261
California Models, 1976	LU60600703	LU41804	LU47261
Fed. Models, 1977-79	LU60600709	LU41807	LU47261
Calif. Models, 1977-79	LU60600711	LU41808	LU47261
All U.S.A., 1980	LU60600711	LU41808	LU47261

CONSTANT ENERGY DISTRIBUTOR COMPONENTS

Distributor No.	LU41804	LU41805	LU41807	LU41808
Cap	LUDC8	LUDC8	LUDC8	LUDC8
Carbon/Spring	LU54423441	LU54423441	LU54423441	LU54423441
Rotor Arm	LURA4	LURA4	LURA4	LURA4
Pick-up and Base Plate	LU54401004	LU54401004	LU54401004	LU54401004
Anti-Flash Shield	LU54427424	LU54427424	LU54427424	LU54427424
Vacuum Unit	LU54401649	LU54401650	LU54401707	LU54401650
Driving Dog	LU420620	LU420620	LU420620	LU420620
‘O’ Ring	LU188639	LU188639	LU188639	LU188639

DISTRIBUTOR CAPS

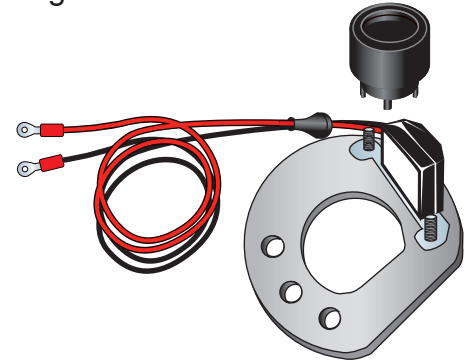
HPDDB199 Distributor Cap, TR7, Spitfire 1500, high-performance cap with brass contacts

ELECTRICAL—Pertronix Ignitor Electronic Ignition Conversions, Spitfire Models

“More Reliable than Original Equipment...”

Pertronix kits are available for converting earlier models with points-type distributors to reliable electronic ignition and for converting later models with Lucas electronic ignition to a more reliable type of electronic ignition. Also consider a Pertronix Flame Thrower ignition coil as listed below to complement your Pertronix electronic ignition...

Part No.	Description
	PERTRONIX IGNITION , Spitfire models; convert various original distributors to reliable electronic ignition
PTR108	Ignition System , converts Delco points type distributors to electronic ignition, 1962-67 Spitfire models with positive ground
PTR110	Ignition System , converts Delco points type distributors to electronic ignition, 1968-74 Spitfire models with negative ground
PTR106	Ignition System , converts original Lucas electronic ignition with amplifier mounted to the distributor, Spitfire 1500 with model 45DE4 distributors, 1975-80
PTR107	Ignition System , converts Lucas Constant Energy distributors with remote amplifier, Spitfire 1500 with model 45DM4 distributors, 1975-80



PTR107

ELECTRICAL—Pertronix Flame Thrower Ignition Coils

“Matched to Pertronix Electronic Ignitors...”

Flame Thrower coils are matched to Pertronix electronic ignition conversions, and they are now available in a choice of black or chrome housings...

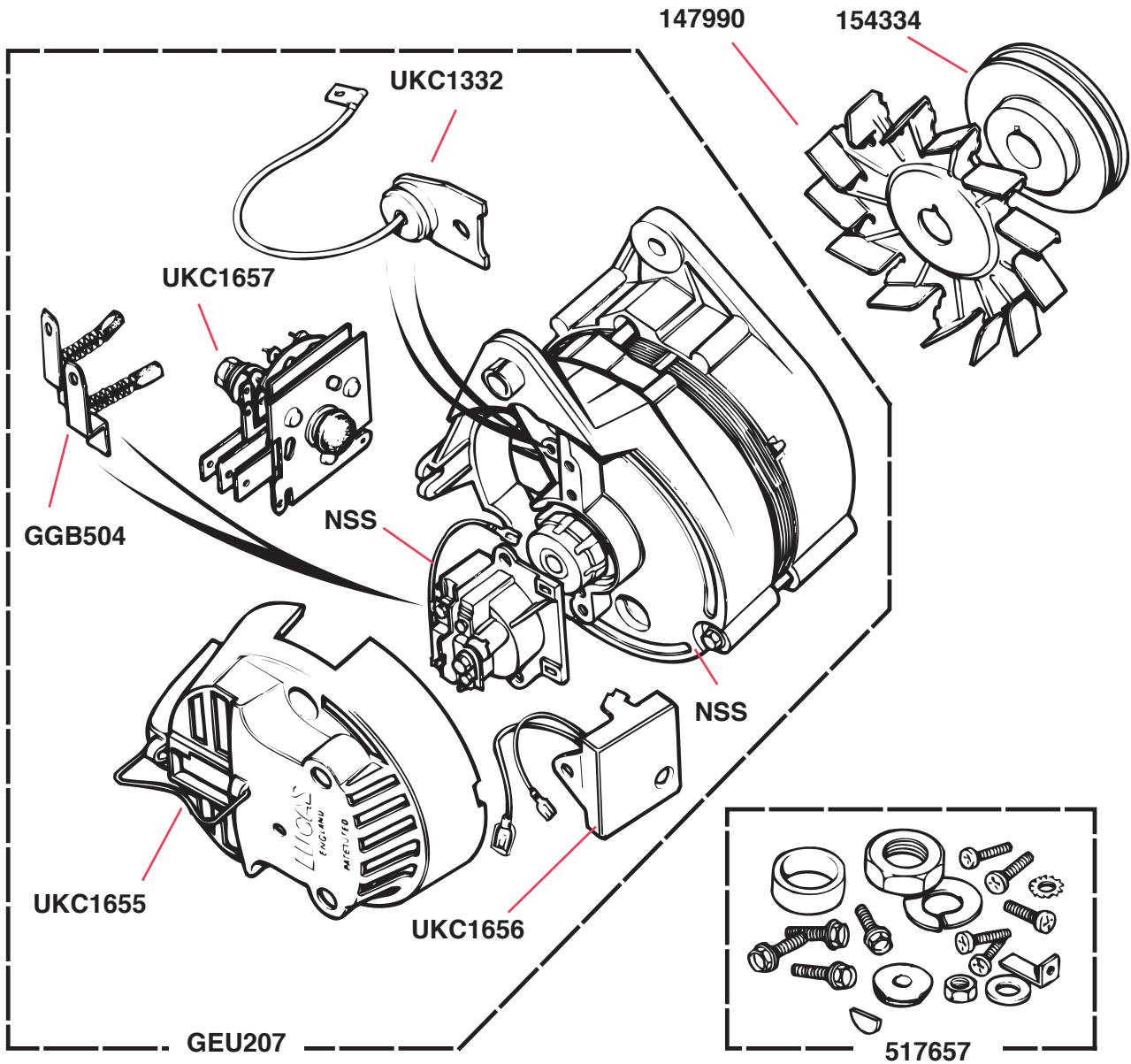
Part No.	Description
	COILS IN CHROME HOUSINGS
PTR203	Ignition Coil , Pertronix Flame Thrower” brand; fits Spitfire, 1962-70;
PTR204	Ignition Coil , Pertronix Flame Thrower” brand; fits Spitfire, 1971-80
	COILS IN BLACK HOUSINGS
PTR201	Ignition Coil , Pertronix Flame Thrower” brand; fits Spitfire, 1962-70;
PTR202	Ignition Coil , Pertronix Flame Thrower” brand; fits Spitfire, 1971-80



PTR201

PTR203

ELECTRICAL—Alternator (16 A.C.R)—All Models Up To 1978



The Roadster Factory lists both new and Lucas factory-rebuilt alternators under their Lucas part numbers, which are as follows:

Part No.	Description
LUA1611	Rebuilt Alternator
LU23804	New Alternator

ELECTRICAL—Alternator (17 ACR)—1979 and 1980 Models

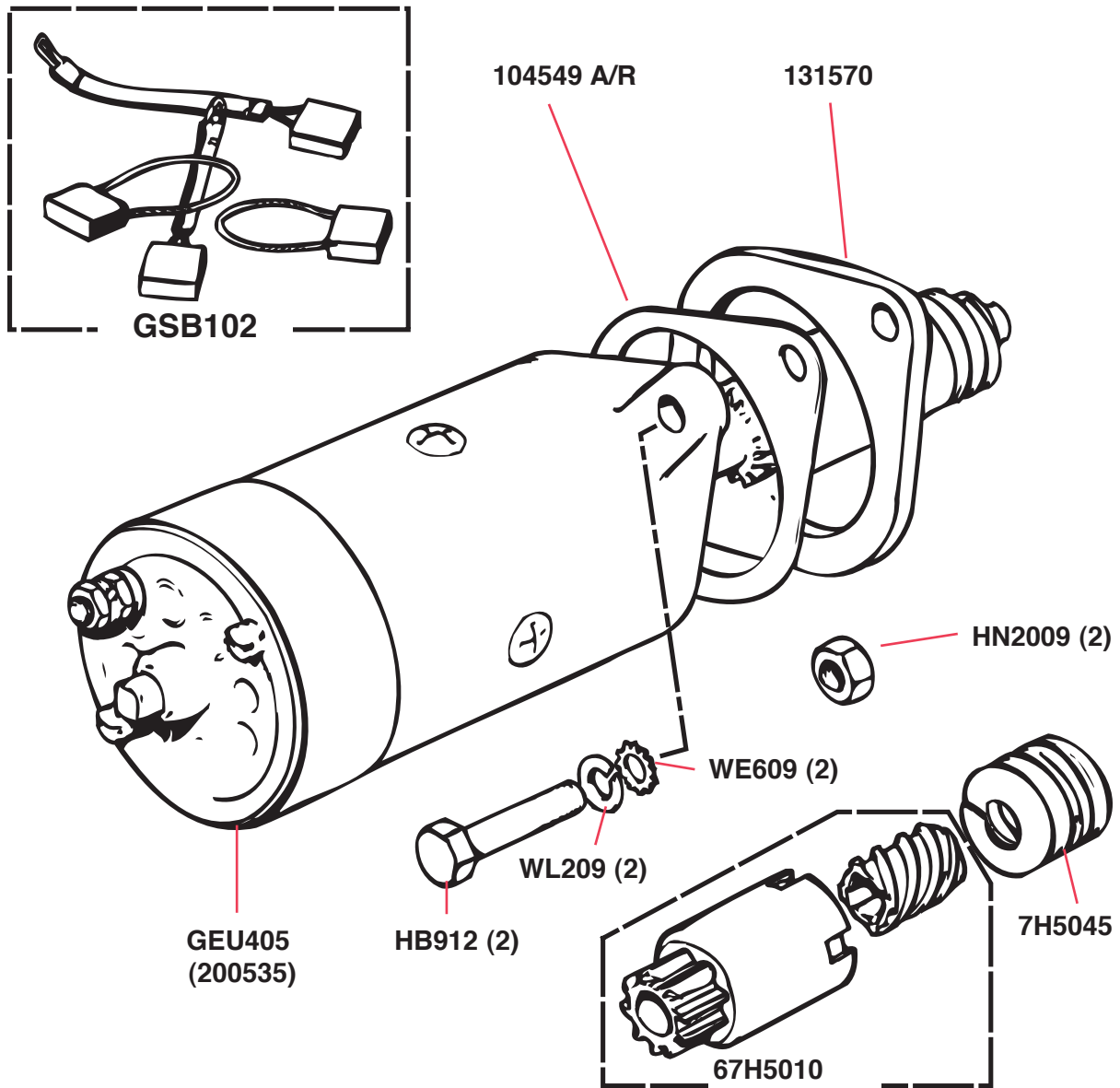
The part no. of the alternator fitted to 1979 cars is LU23748 (new) or LUA1611 (Lucas factory rebuilt).

The part no. of the alternator fitted to 1980 cars is LU23845 (new) or LUA1611 (Lucas factory rebuilt).

Should you wish to rebuild your own alternator, Lucas lists rebuild parts as follows (You will find prices for these components in our general price list.).

Alternator (New):	LU23748	LU23845
Alternator (Rebuilt)	LUA1611	LUA1611
Lucas Model No.:	17ACR	17ACR
Description	Part No.	Part No.
Cover	LU54200689	LU54200720
Regulator	LU37595	LU37595
Rectifier	LU83295	LU83295
Brush Box Assembly	LU54200349	LU54200349
Brushes Set	LU54219368	LU54219368
Stator	LU54218305	LU54218360
Rotor Assembly	LU54202067	LU54202268
Slip Ring	LU54217372	LU54217372
Bracket, Driving End	LU54200544	LU54200544
Bearing Kit, Driving End	LU54219310	LU54219310
Bolt, Through Fixing	LU54113722	LU54113722
Bracket, Slip Ring End	LU54200781	LU54200780
Bearing Kit, Slip Ring End	LU54219312	LU54219312
Sundry Parts Kit	LU54218702	LU54218702
Surge Protection Device	LU54486144	LU54486144
Suppression Capacitor	LU54200297	LU54200297

ELECTRICAL—Starter Motor



The Roadster Factory lists the starter motor under the Lucas part numbers as follows:

Part No.	Description
LUS3512	Rebuilt Starter Motor (rebuilt by Lucas)
LU25149	New Starter Motor

ELECTRICAL—Gear Reduction Starter

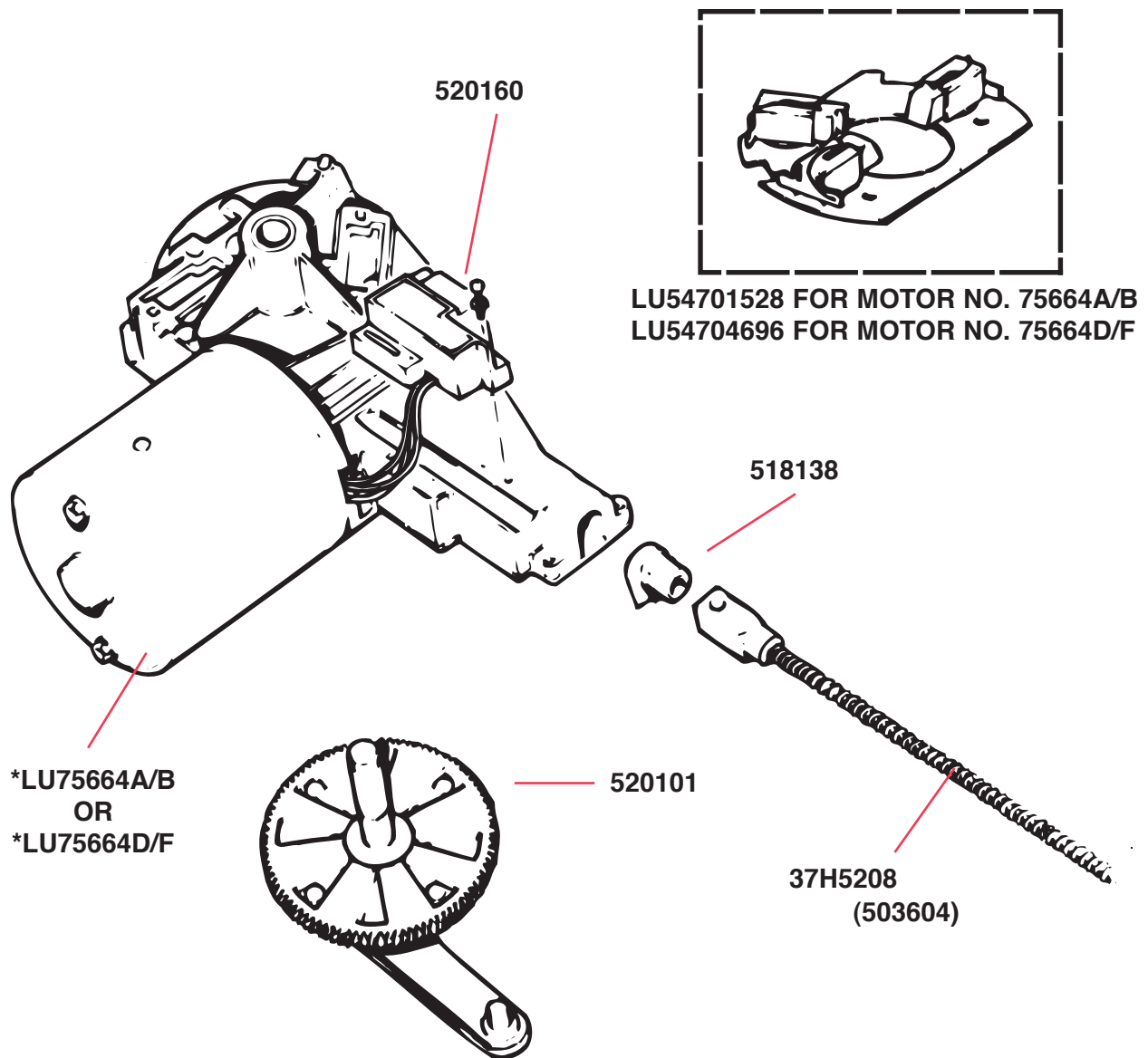
“Powerful New Starters to Crank Your Classic Engine...”

Modern gear reduction starters have more power to crank your sports car engine! In addition, they are smaller and lighter than original Lucas starters. Brand new gear reduction starters perfectly replace original starters that have been rebuilt too many times. Gear reduction starters are complete and ready to install. A minor wiring change is required. One year warranty. Buy with confidence that you are making a good investment.



GRS103

Part No.	Description
GRS103	Starter Motor; fits all Spitfires; use original spacer after filing away flange per instructions

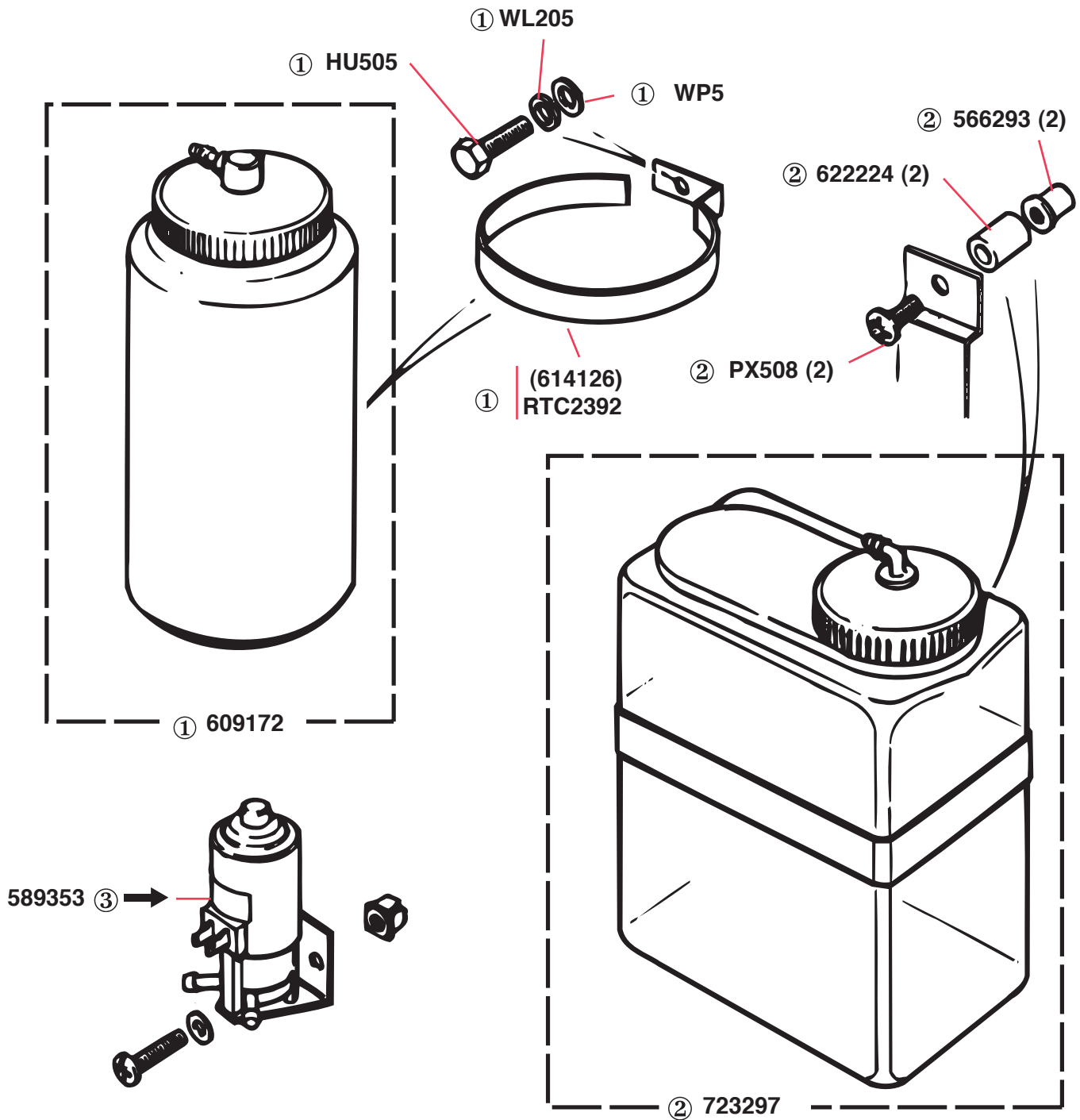
ELECTRICAL—Windscreen Wiper Motor, Gear, Crosshead, and Rack

To later cars, a ground wire ("earth lead") was fitted. The part no. of this item is ADU1648.

* Locate the Lucas part no. on your old wiper motor before ordering parts for it. if you order a new motor, the part numbers are interchangeable.

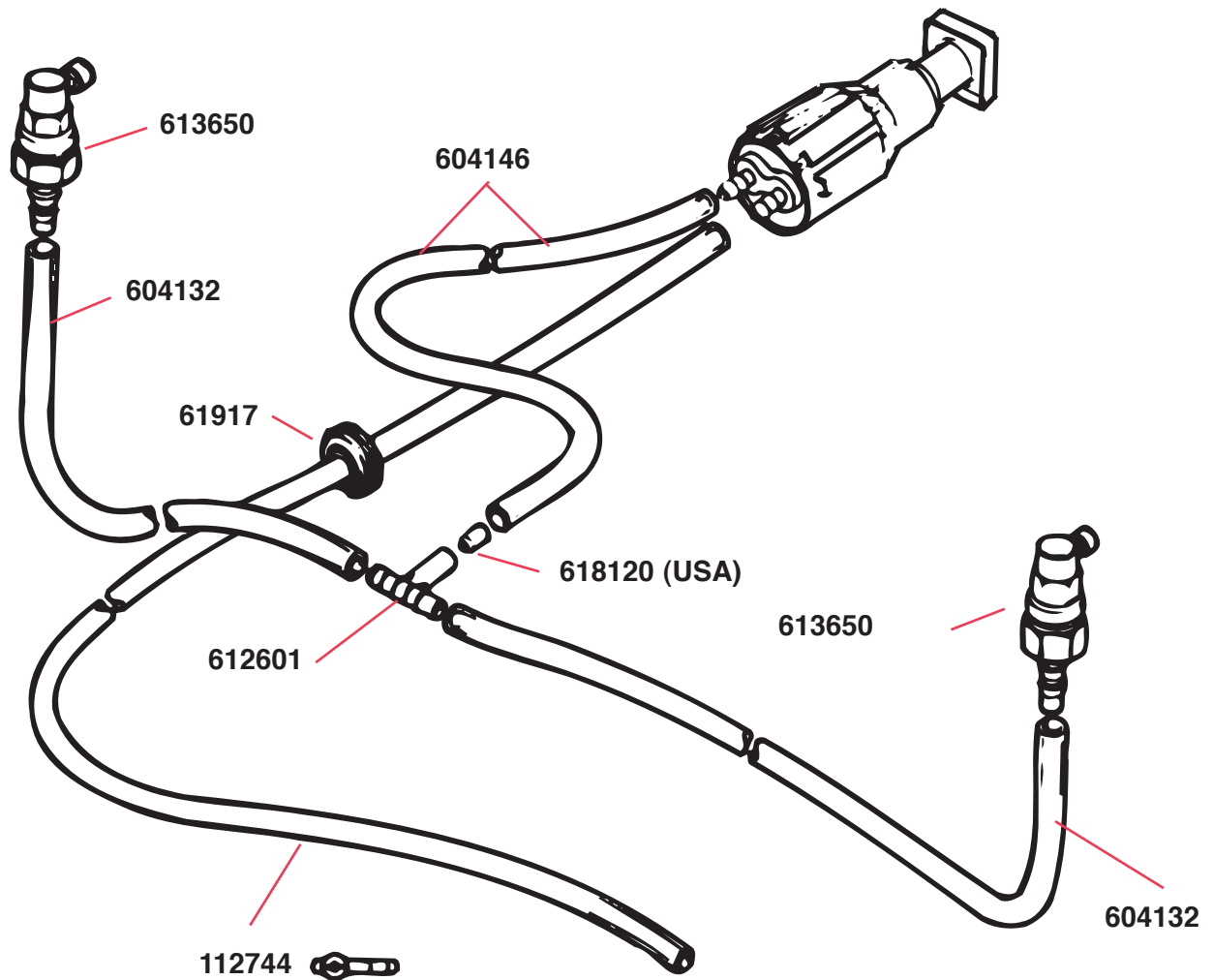
Park Switch is part no. LU54701575 for motor no. 75664A/B and LU54705657 for motor no. 75664D/F.

ELECTRICAL—Windscreen Washer Bottle and Fittings

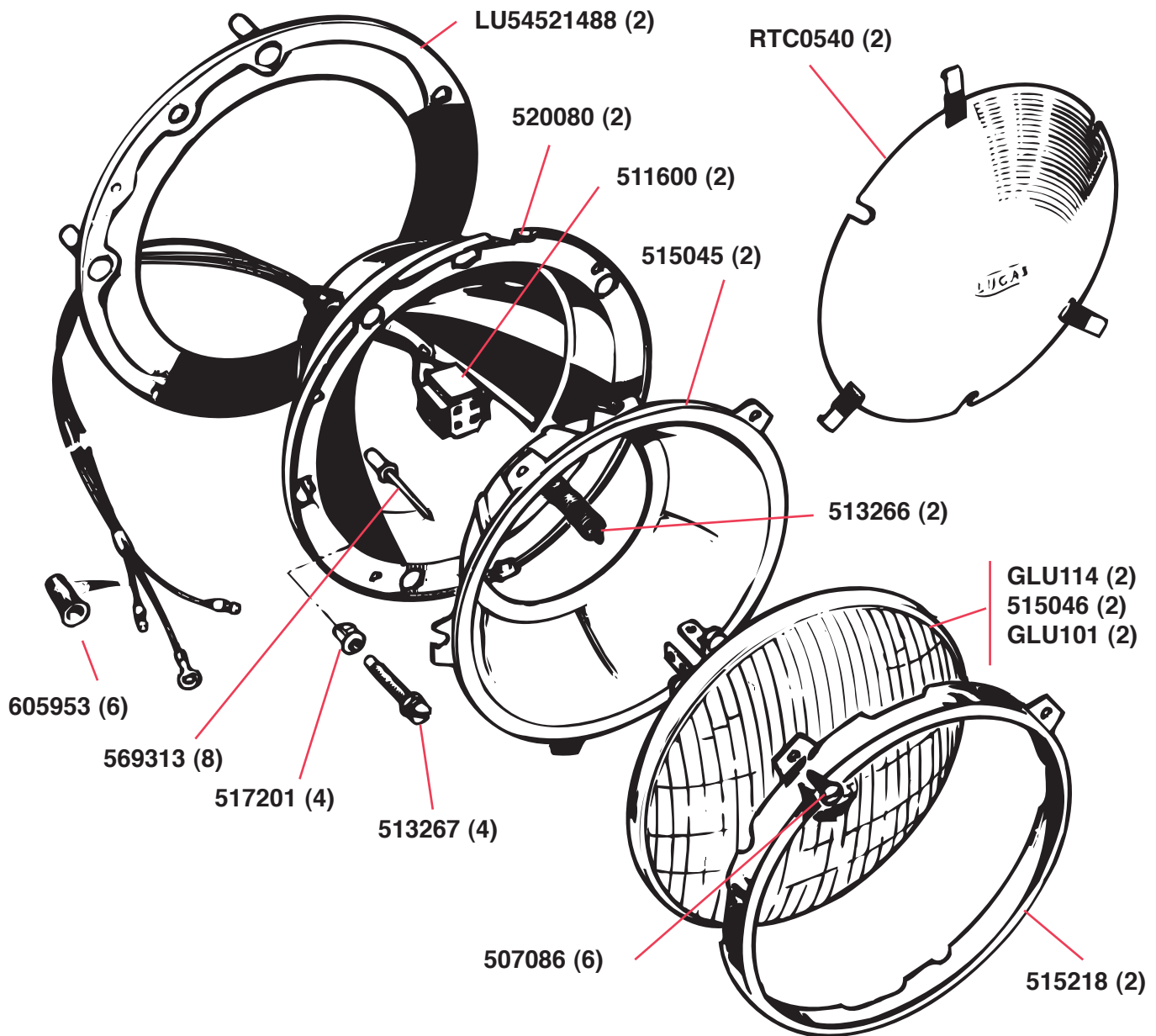


Components marked ① or ② should be fitted together as sets.

③ Commission no. FM60,006

ELECTRICAL—Windscreen Washer Tubing and Fittings

ELECTRICAL—Headlamps



Part No.

LU59191
LU60600427

GLB700
LU54521488
501478

HP700

HLB55/60

Description

Headlamp Assembly

Headlamp "Trimmer" Kit (includes part numbers 513267, 517201, and 513266 for one lamp)

Bulb, sealed beam

Gasket, lamp to body

Harness and Plug, headlamp

Headlamp Kit, includes two replica tripod headlamps, 55/60 halogen bulbs, rubber boots

Replacement Bulb



HP700

ELECTRICAL—Headlamps

“Choose From Stock Sealed Beam to High-Performance Halogen”

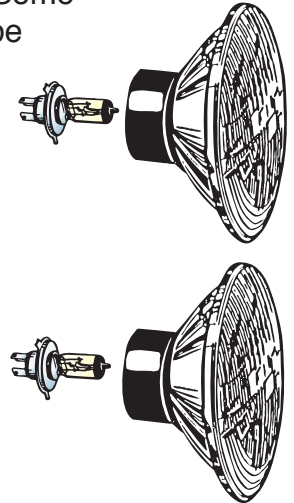
Following is a nice selection of replacement headlamps for your Spitfire. Some are street legal halogen lamps, others are for off-road use only and may not be legal for street use in your state.



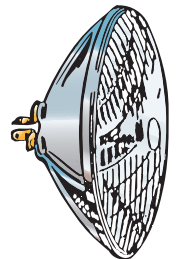
RFK1336



RFK1337



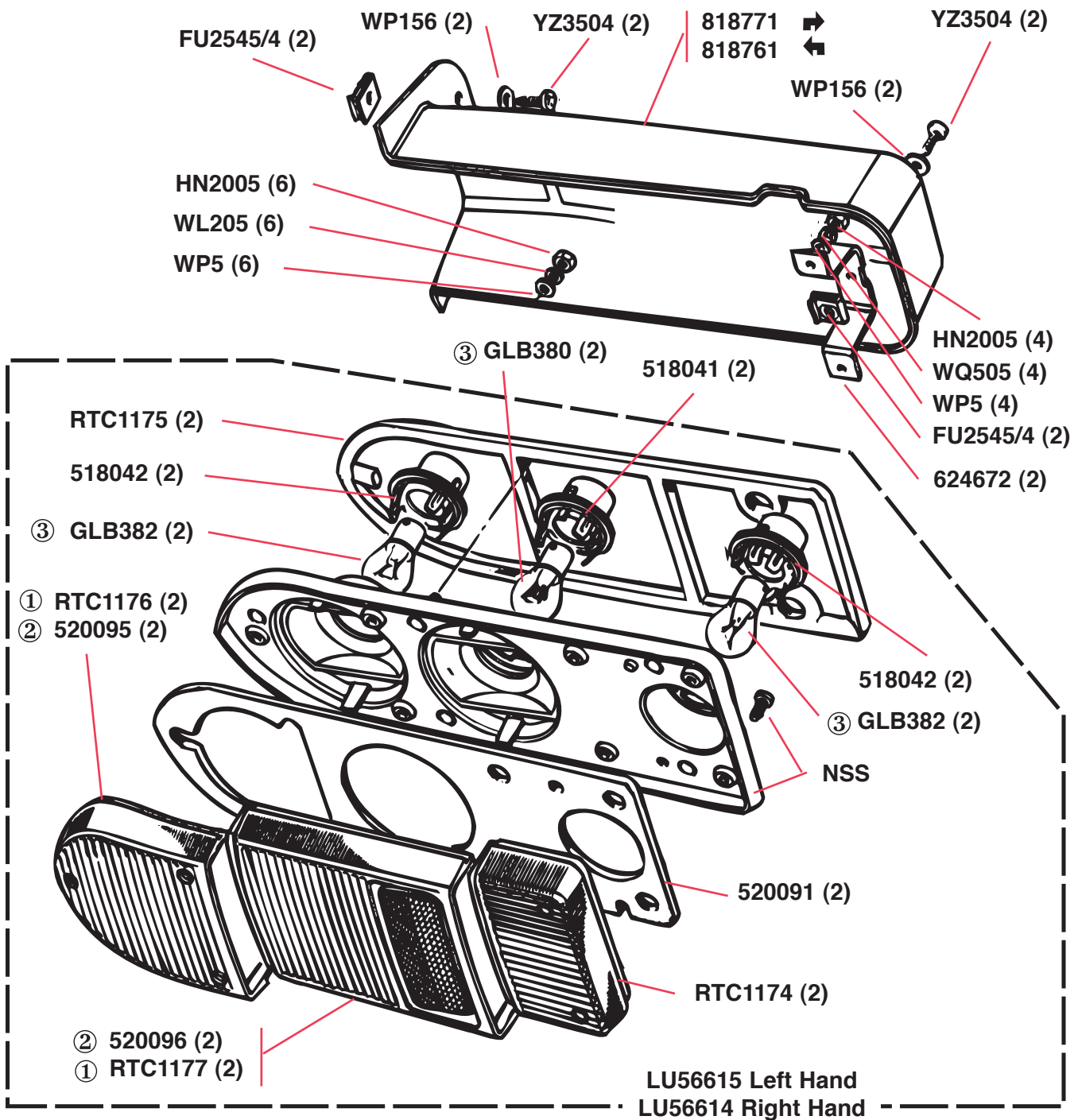
RFK1488



GLB700

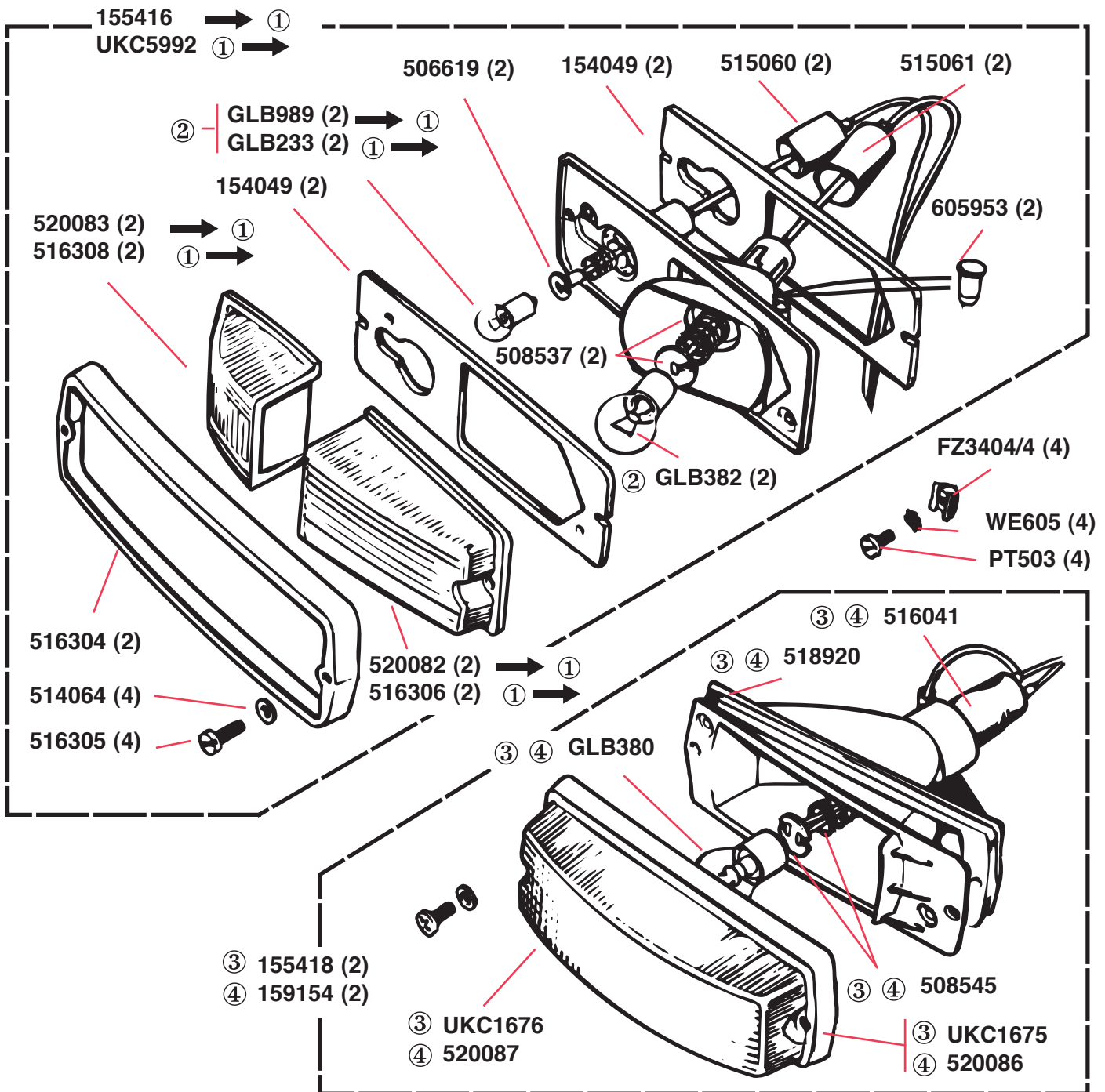
Part No.	Description
	SEALED BEAM LAMP UNITS
GLB700	Light Unit , Wagner brand
	STREET LEGAL HALOGEN LAMP KITS
RFK1480	HEADLAMP KIT , halogen lamps requiring separate H4 bulbs; round face, street legal; kit includes two lamps and two bulbs
HLB55/60	Replacement Bulb , 55/60 watts
	OFF-ROAD HALOGEN LAMP KITS ; may not be legal for street use in your state; all of these lamps use separate H4 bulbs; each kit includes two lamps and two bulbs
RFK1488	Lucas H4 Halogen Lamp Kit ; round faced with “H4” embossed on the glass
RFK1336	Headlamp Kit , round-faced lamps similar to classic Cibie Z-beam lamps
RFK1337	Headlamp Kit , flat-faced lamps
	REPLACEMENT HALOGEN H4 BULBS
HLB55/60	Halogen Bulb , 55/60 watts
HLB55/100	Halogen Bulb , 55/100 watts

ELECTRICAL — Stop/Tail/Flasher/Reflex/Reverse Lamp



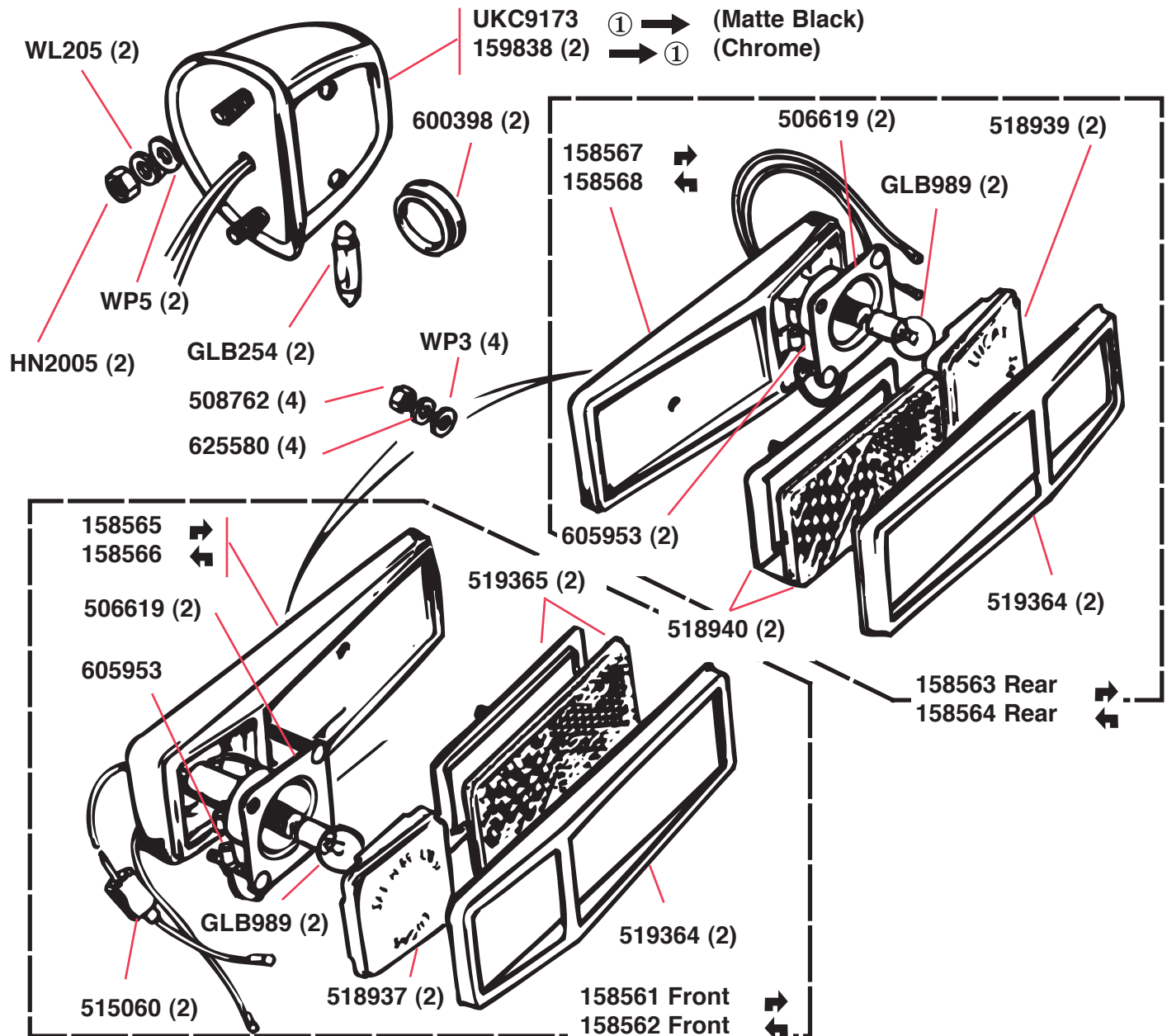
Nearly all part nos. on this page supercede in our price list to Lucas part numbers. While two part nos. are given for many items here, in nearly every case, they supercede to one Lucas part.

ELECTRICAL—Front Side and Flasher (Signal) Lamp



It is not clear from the Lucas catalogues, but the lamp illustrated at the top of the page may have been fitted to some U.S. cars; however, the lamp illustrated at the bottom of this page was certainly the most widely used. Nearly all part nos. on this page supersede to Lucas part nos. in our general price list.

ELECTRICAL—Rear Number Plate Lamp and Front and Rear Side Marker Lamps

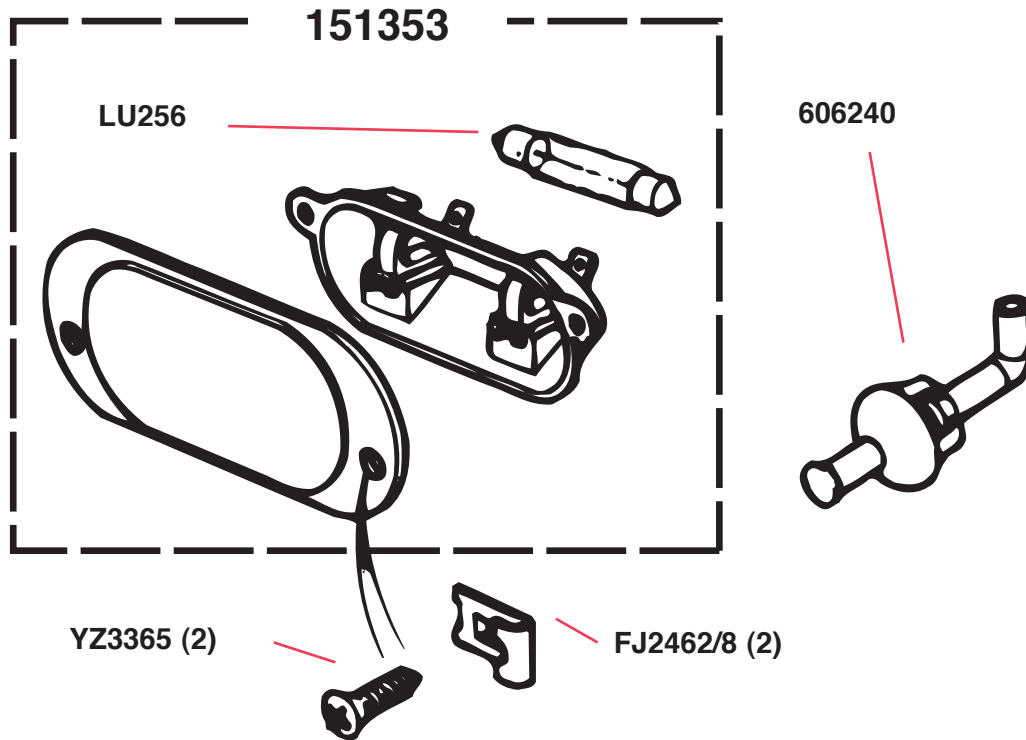


Part No.
AAU2143

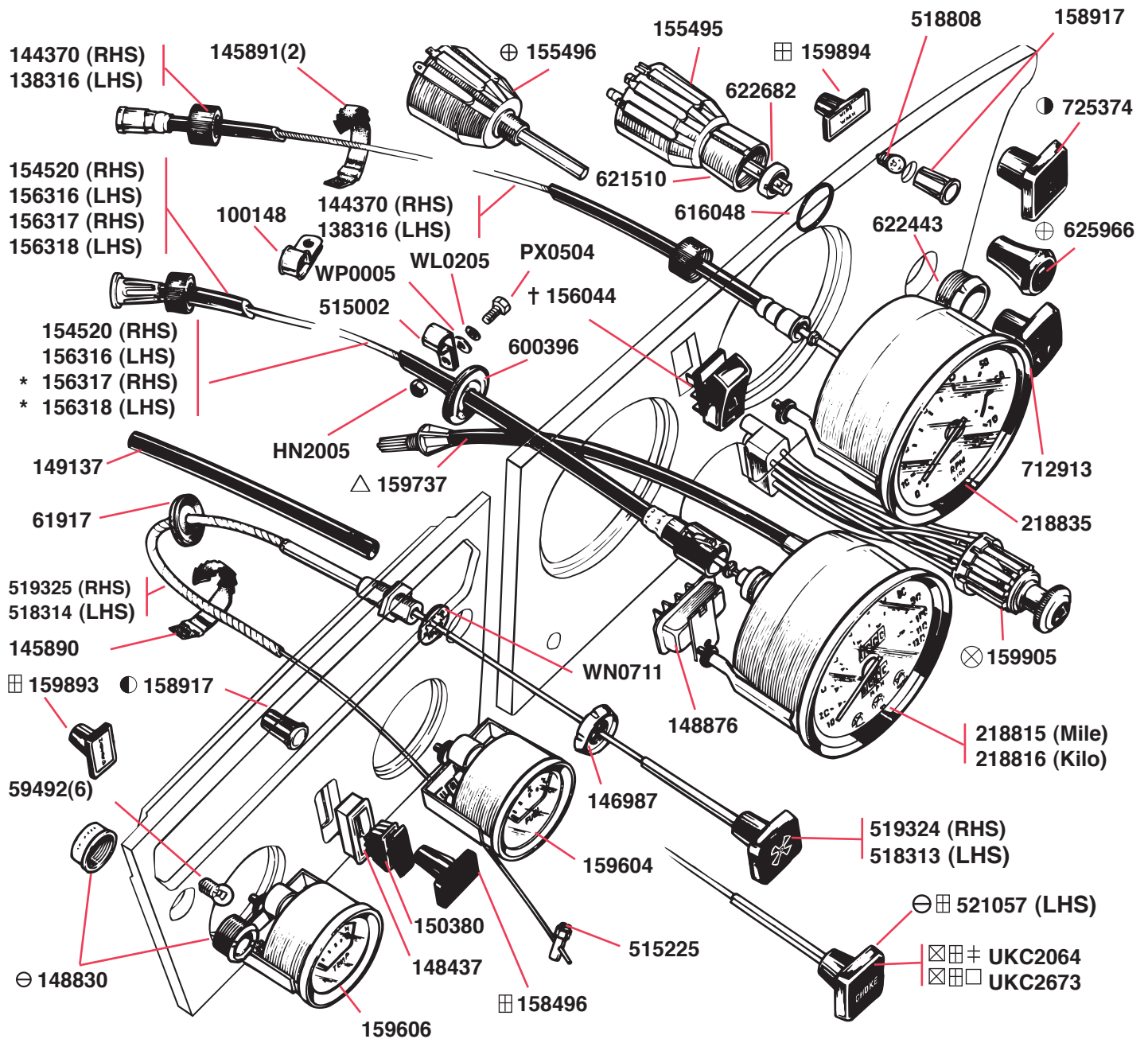
Description

Number Plate Lamp, aftermarket replacement for UKC9173 or 159838 shown above. Very similar in appearance, but made of black plastic rather than cast metal as original. Mounts to car and connects to wiring like original lamp.

① Body no. FM60,885

ELECTRICAL—Boot (Trunk) Lamp and Switch

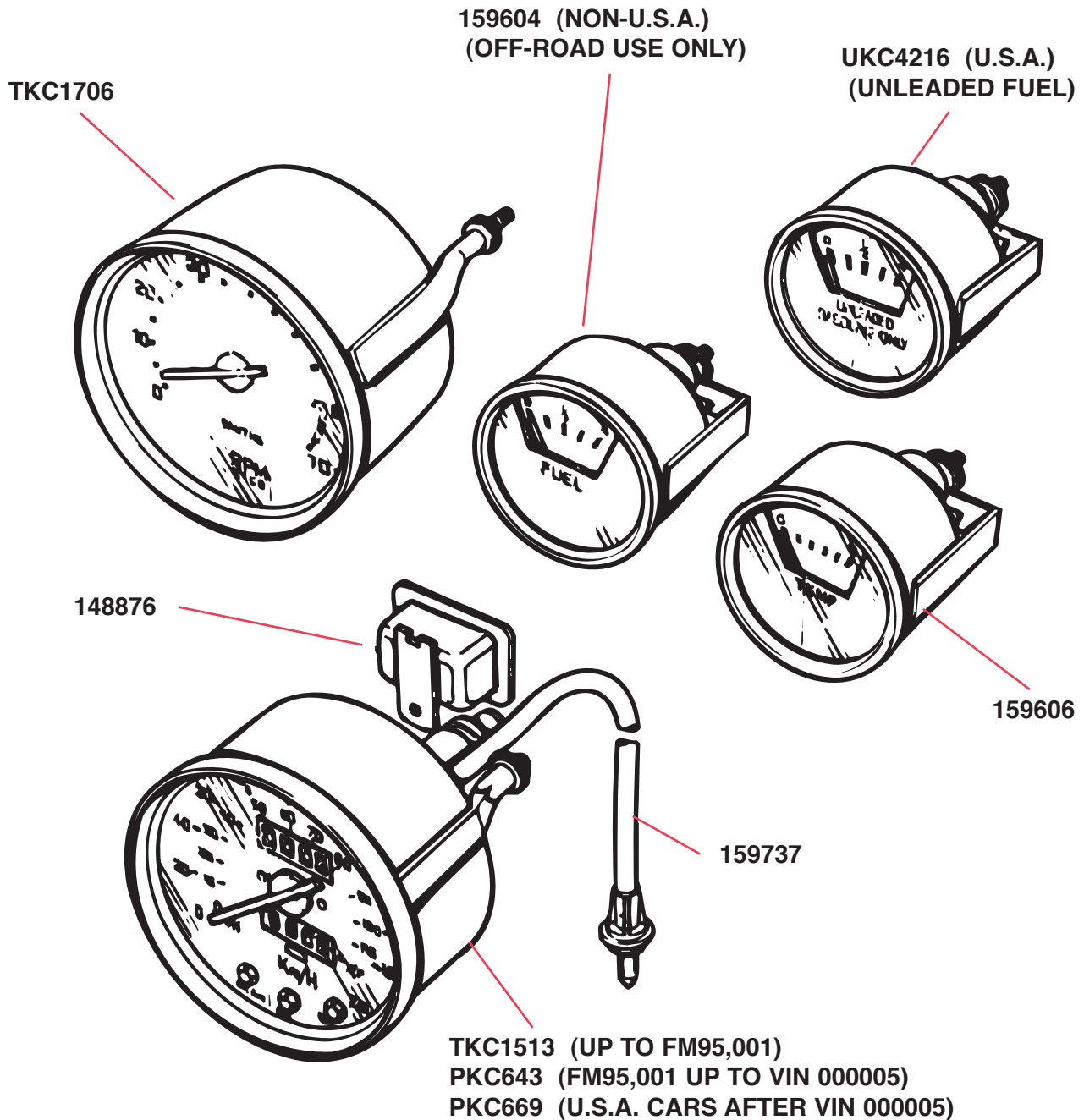
ELECTRICAL—Dash Switches and Instruments—Fitted Through End of 1974 Model Year



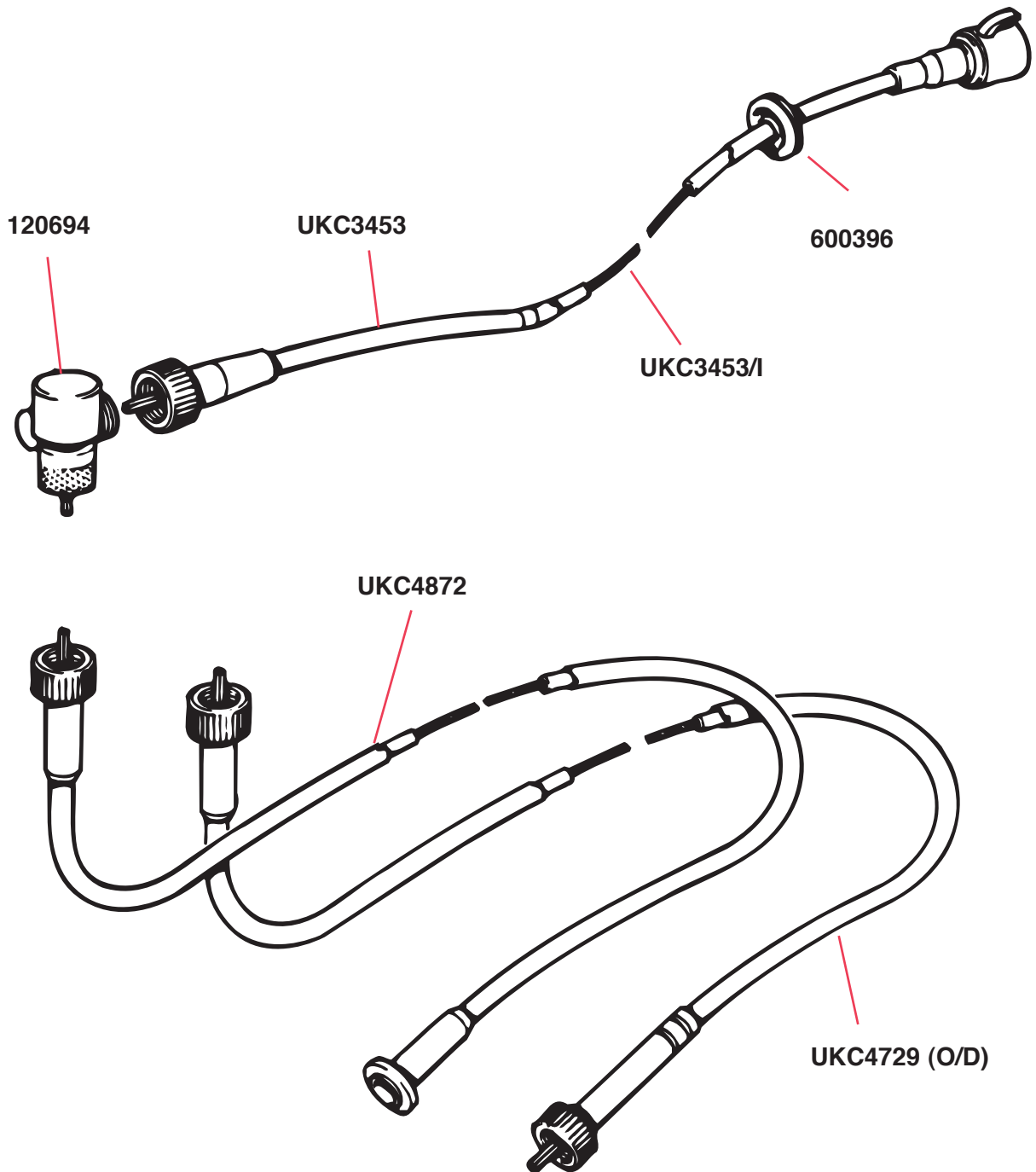
Explanation of symbols used on this page:

- | | |
|--|---|
| † 156044 Fitted on LHS Cars only | ● Italy only, fitted from Comm. No. FH52644 |
| ⊖ 148830 Fitted on Models with Dual Brakes or Hazard Warning | ⊗ B.A.O.R. (RHS) |
| △ Part of Assembly 218815 or 218816 | ⓪ Fitted up to Comm. No. FM10,000U |
| * Overdrive Only | ⊠ Fitted from Comm. No. FM10,001U |
| ⊕ Sweden Only | ⊞ Proctor alternative to UKC2673 |
| ⊞ U.S.A. | □ S.J. Clark alternative to UKC2064 |
| ● U.S.A. only, but will be supplied for all markets when stocks of 625966 and 712913 are exhausted | |

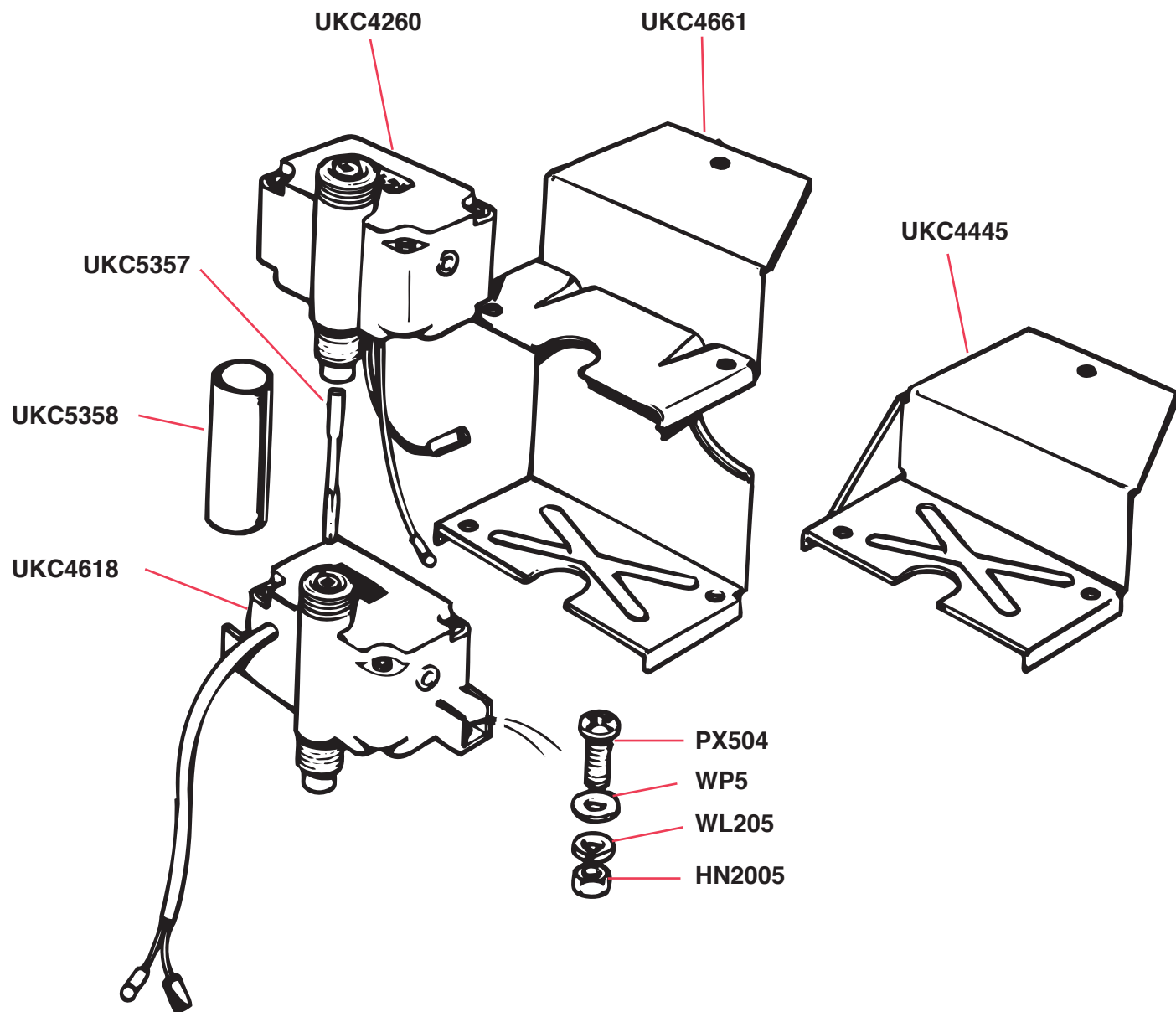
ELECTRICAL—Dash Instruments—1975 Model Year and Later



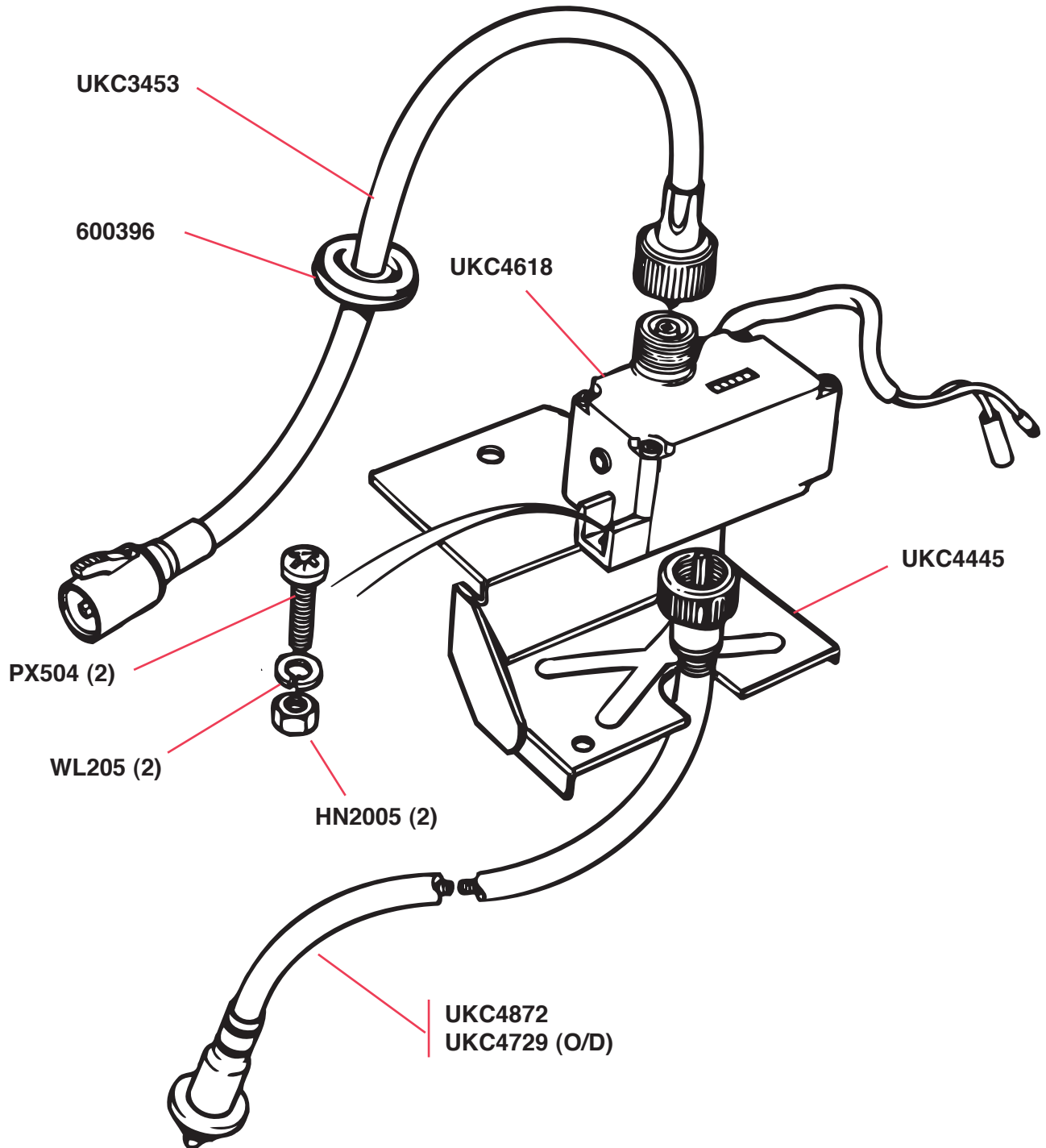
ELECTRICAL—Speedometer Cables—U.S.A. Federal Models From 1975 Model Year Up To Commission No. FM60,006 (approx.)
—California Models from 1975 Model Year Up To Commission No. FM90,148 (approx.)



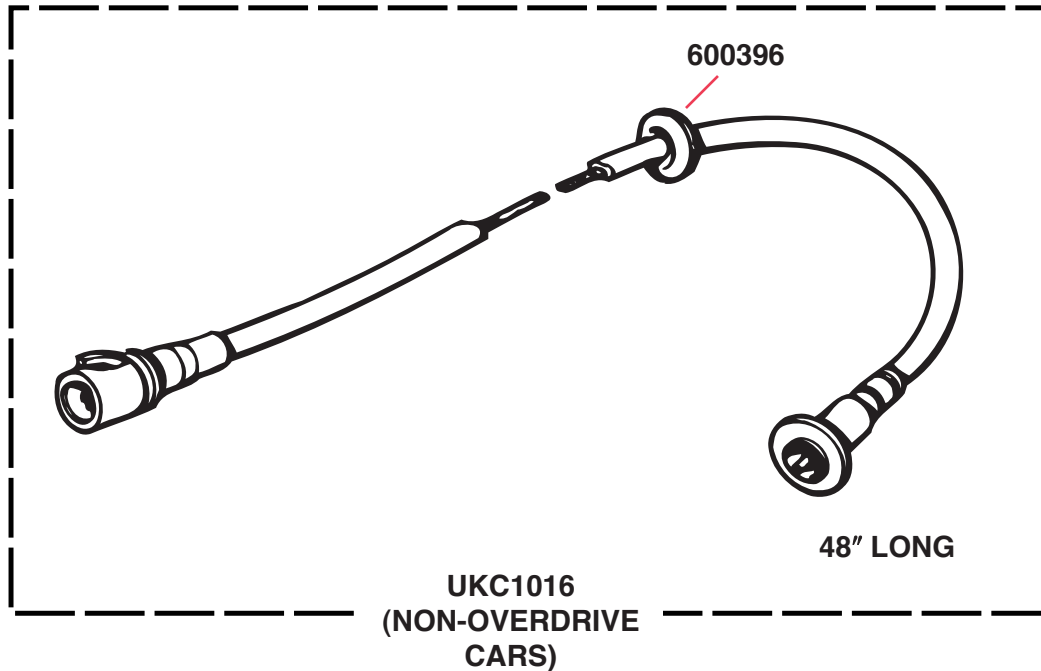
ELECTRICAL—Service Interval Counters—All U.S.A. Models—Up To Commission No. FM60,000



ELECTRICAL—Speedometer Cables, Service Interval Counter
—U.S.A. California Models—From Commission No. FM60,000 to
FM90,148



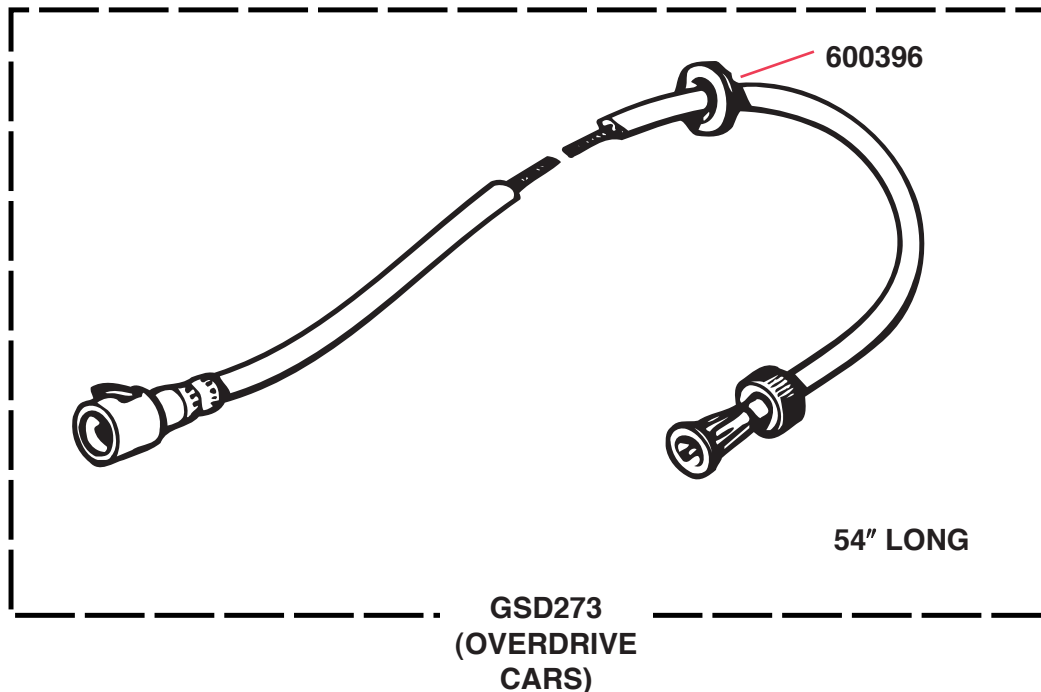
ELECTRICAL—Speedometer Cables—U.S.A. Federal Models After Commission No. FM60,006—California Models After Commission No. FM90,148



100148

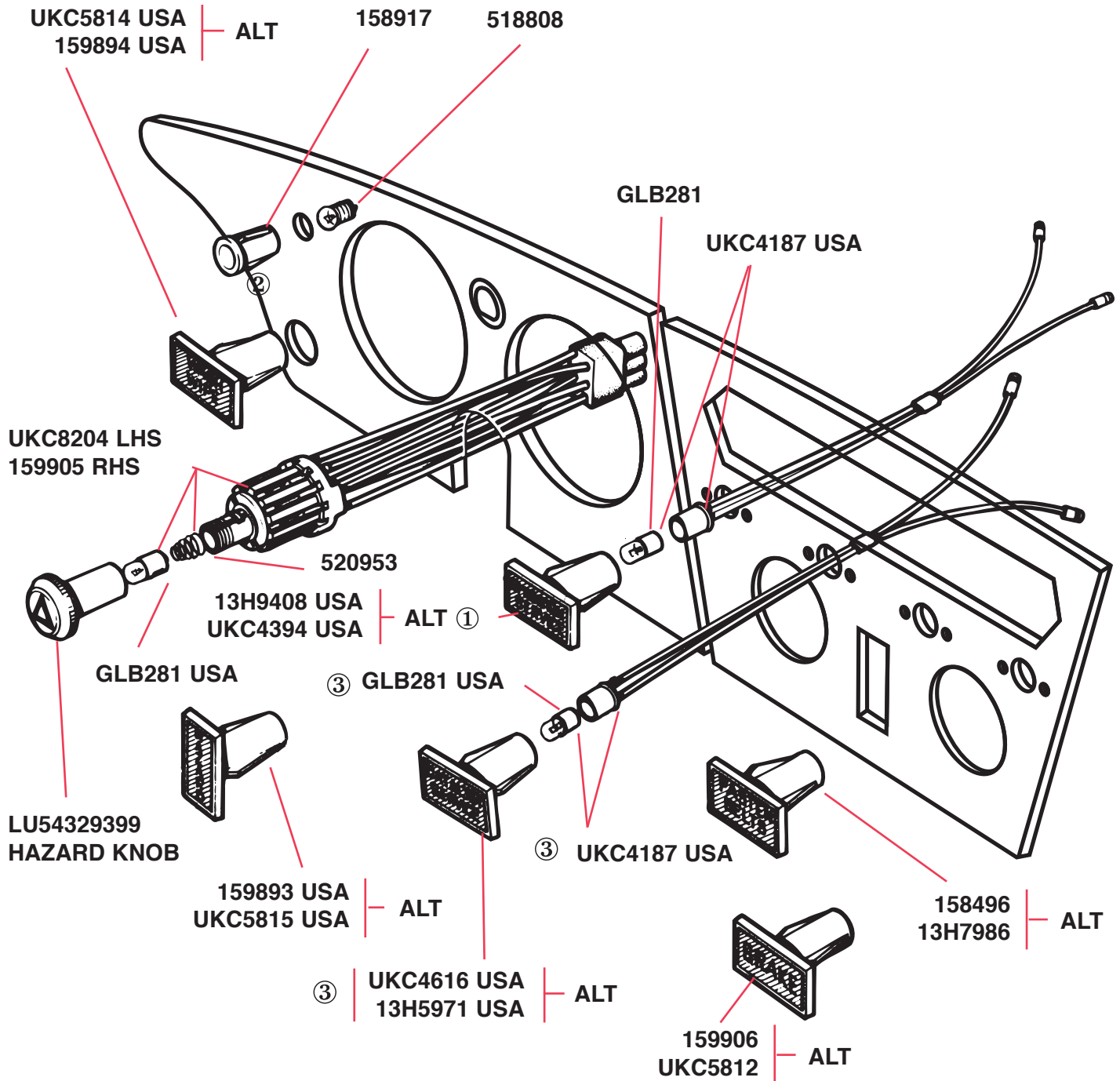


159556



515002

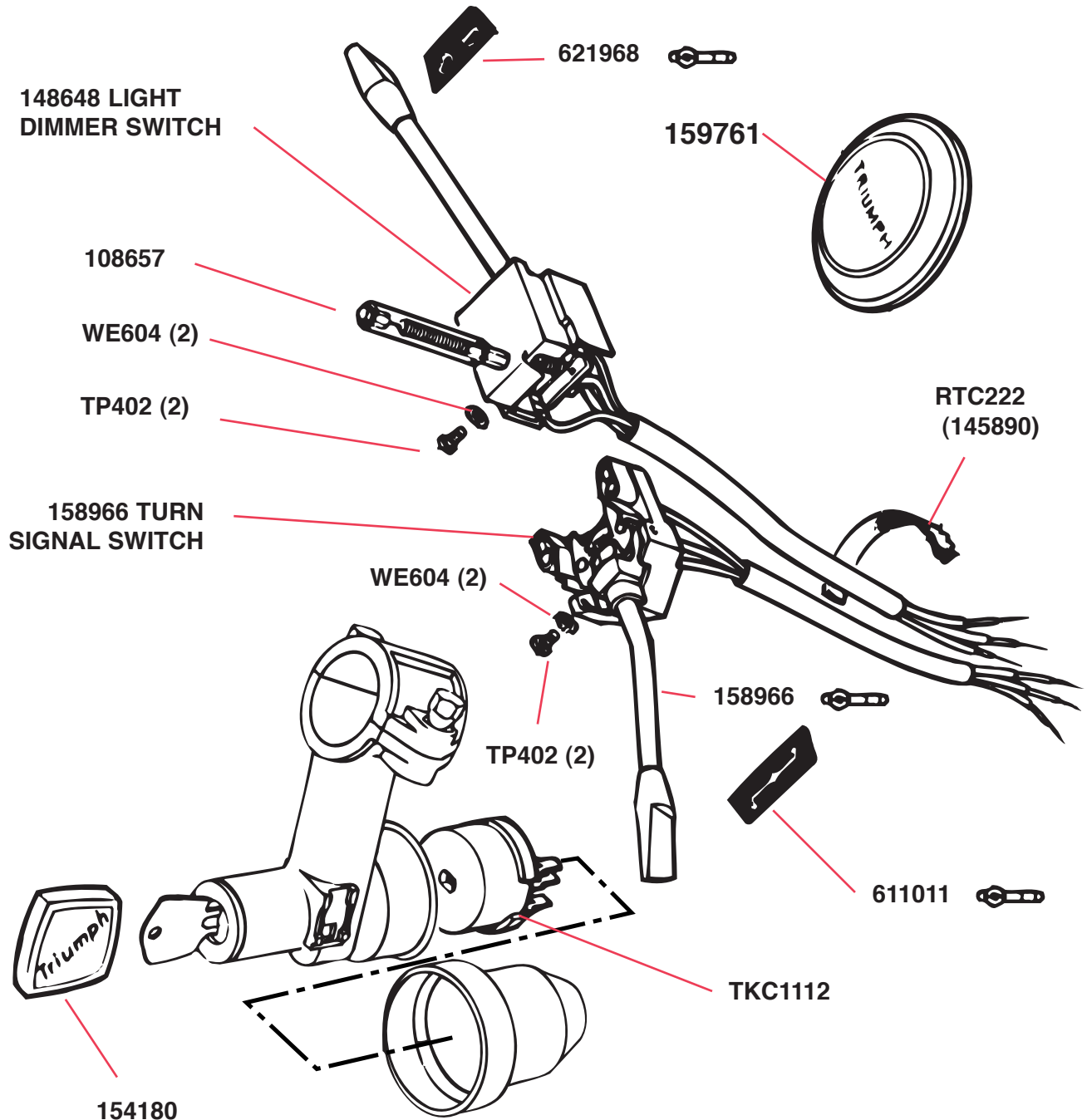
ELECTRICAL—Dash Warning Lights—After 1974 Model Year



- ① Commission no. FM60,006
- ② Commission no. FM60,006
- ③ Commission no. FM90,148

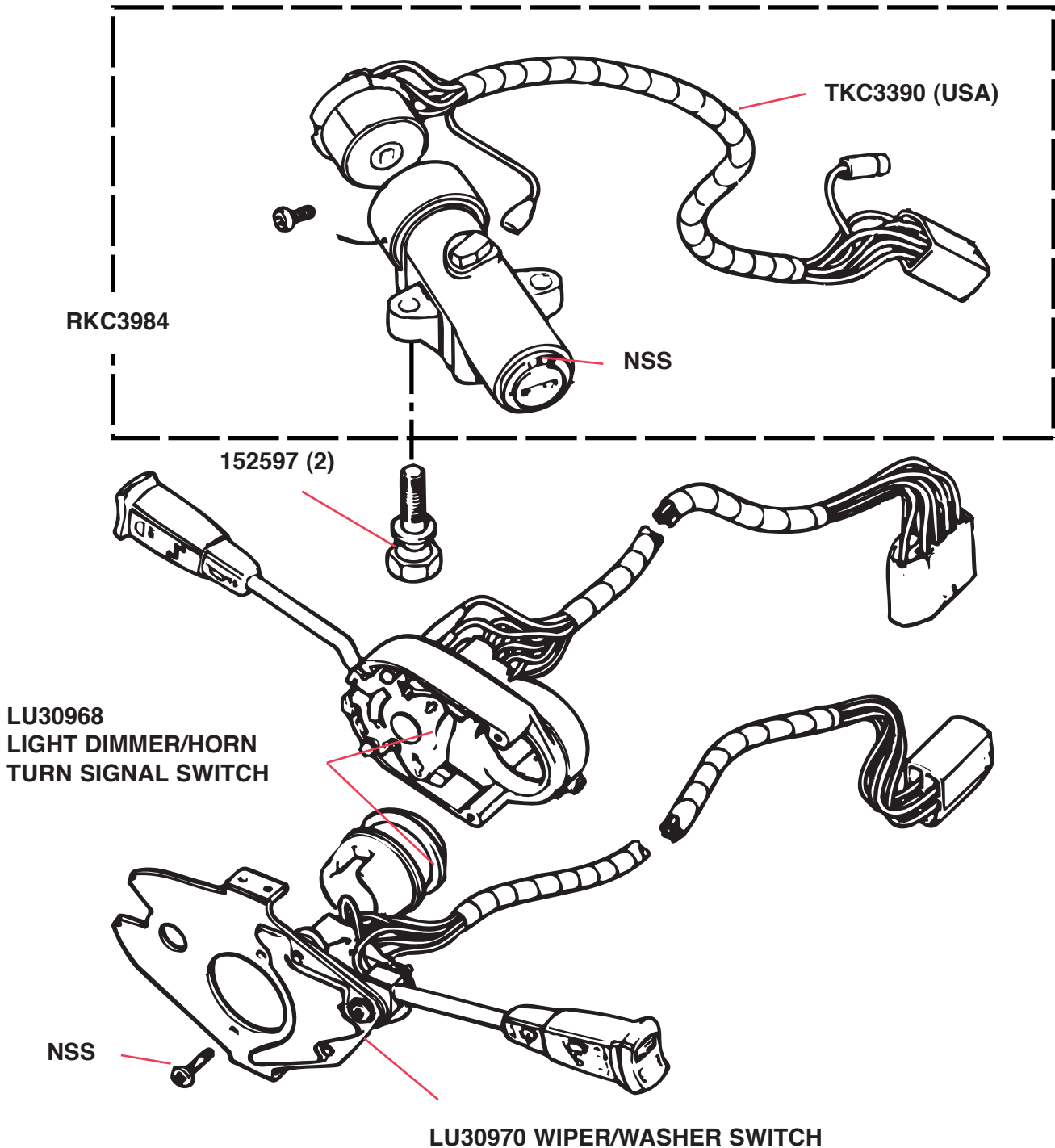
ELECTRICAL—Steering Column Switches, Horn Push, Ignition Switch—All U.S.A. Models—Up To Commission No. FM60,006

Be careful to choose switches based upon description and not upon position in the illustration below—the drawing is for R.H.S. cars!

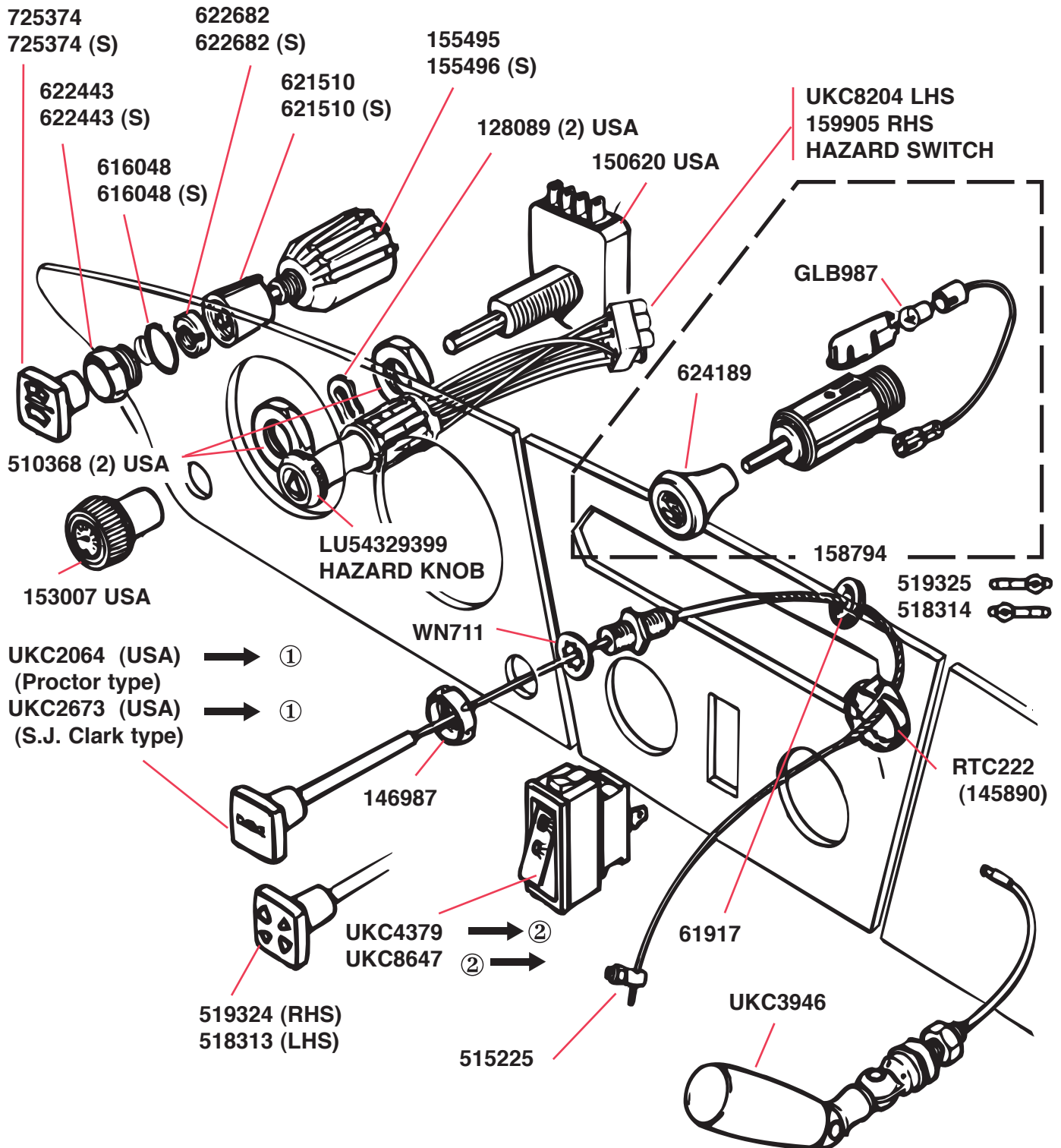


Clip no. 613766 is required for securing horn push.

ELECTRICAL—Steering Column Switches—All U.S.A. Models —After Commission No. FM60,006

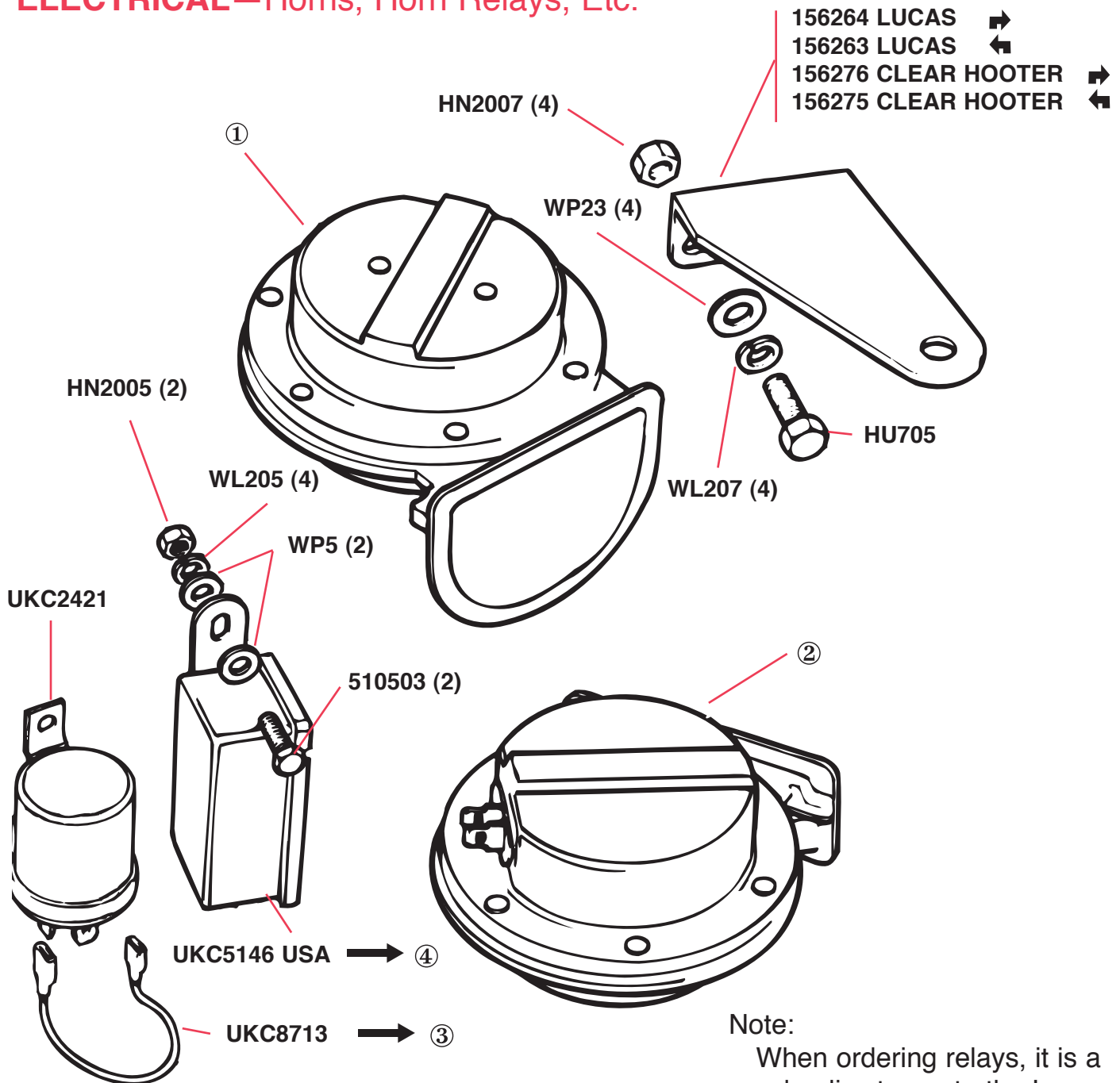


ELECTRICAL—Dash Switches, Choke Cable, Map Reading Lamp, Cigarette Lighter



- 1 Commission no. FM80,001
- 2 Commission no. FM60,006

ELECTRICAL—Horns, Horn Relays, Etc.



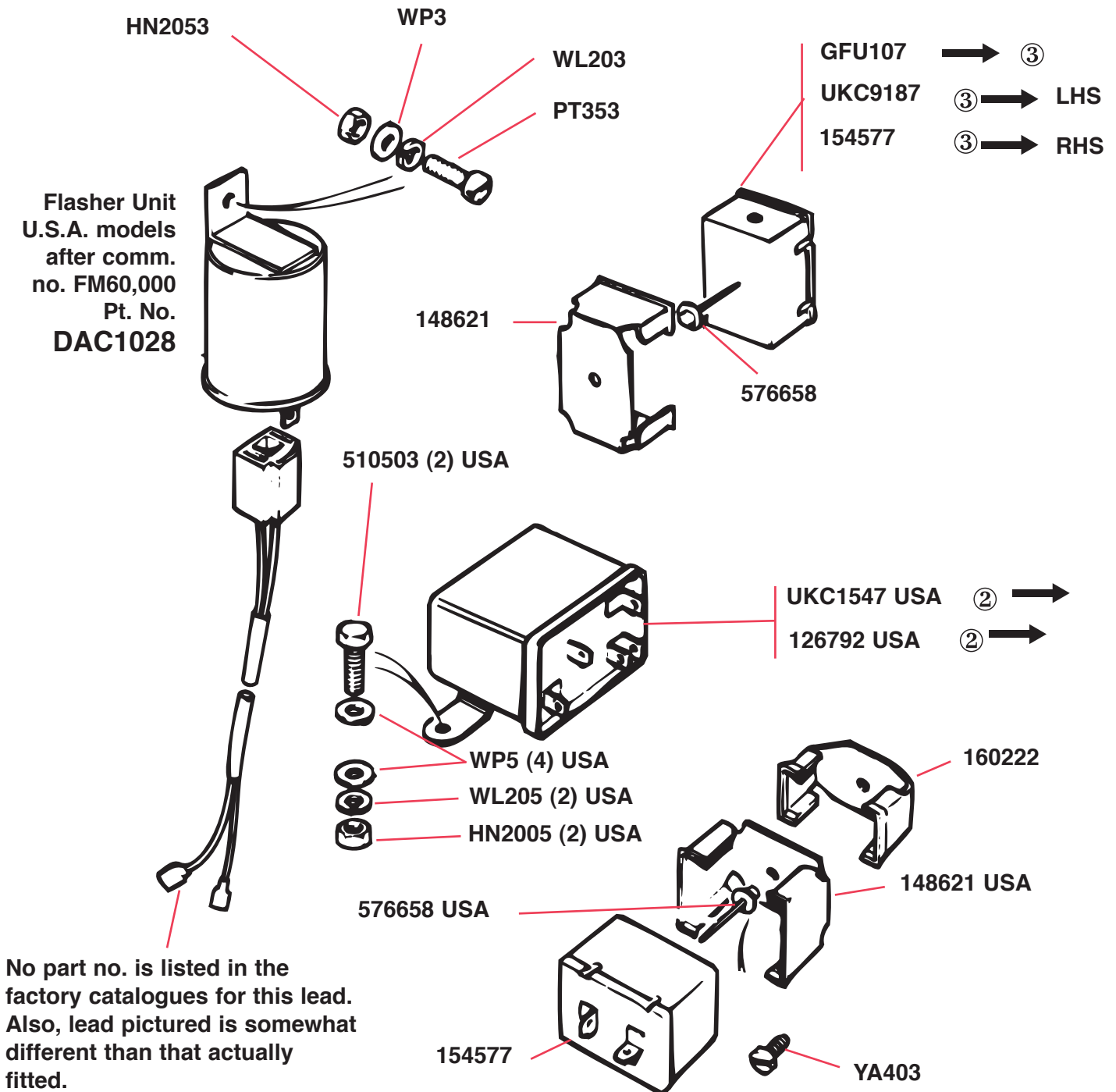
Note:

When ordering relays, it is a good policy to quote the Lucas pt. no. of the old unit. This is usually a five digit no. (but as many as eight), sometimes followed by a meaningless letter. As: 55832A. Alternatively, the old unit may be sent along with the order.

- ① 158137/1 Horn, high note Lucas, R.H.
 158137/2 Horn, low note Clear Hooter, R.H.
- ② 158138/1 Horn, low note Lucas, L.H.
 158138/2 Horn, high note Clear Hooter, L.H.
- ③ Fitted up to commission no. FM100,020 only.
- ④ Fitted up to commission no. FM60,006 only.

Lucas and Clear Hooter Horns are interchangeable in car sets only.

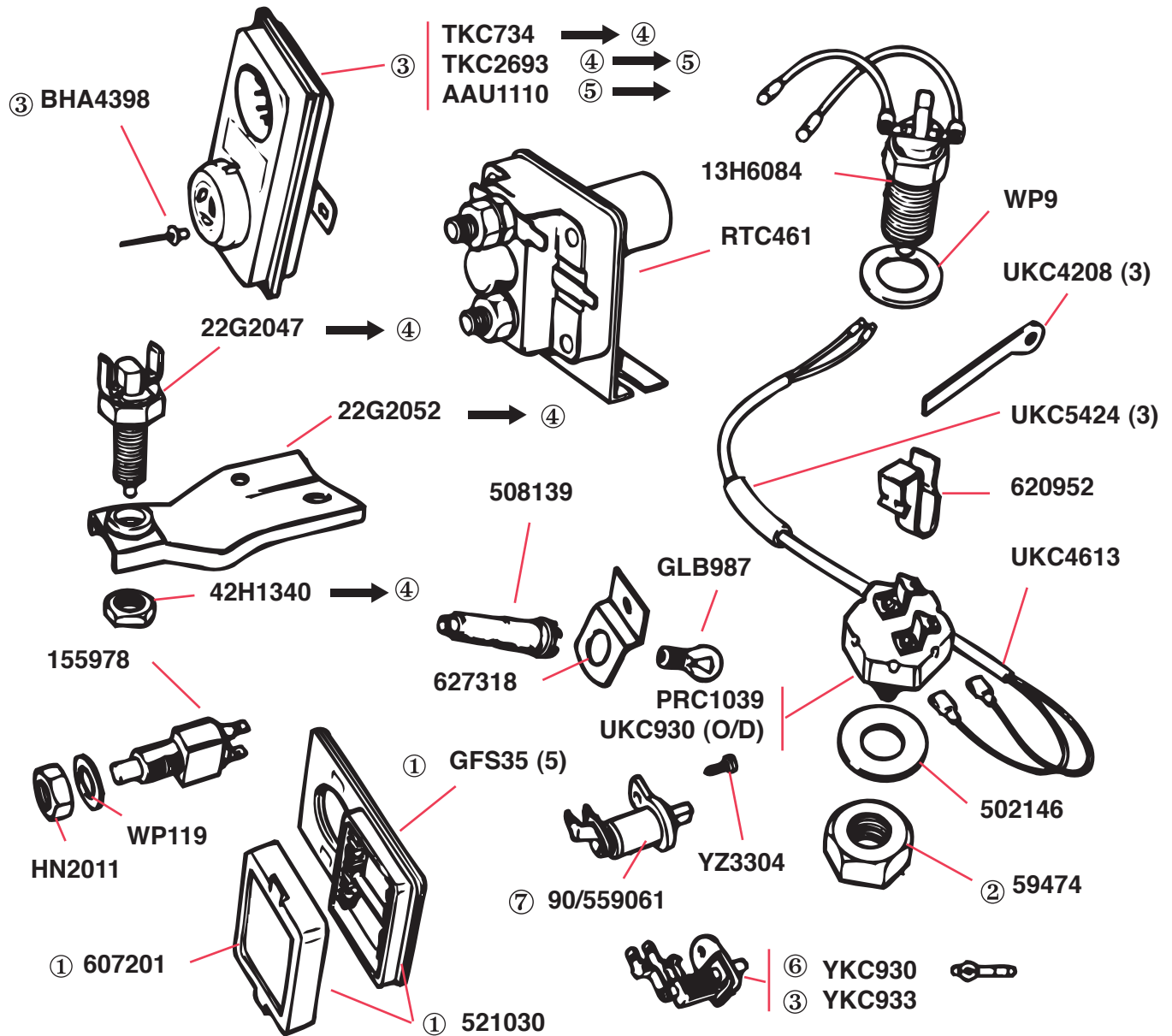
ELECTRICAL—Flasher Unit, Hazard Flasher Unit



2 Commission no. FM40,001.

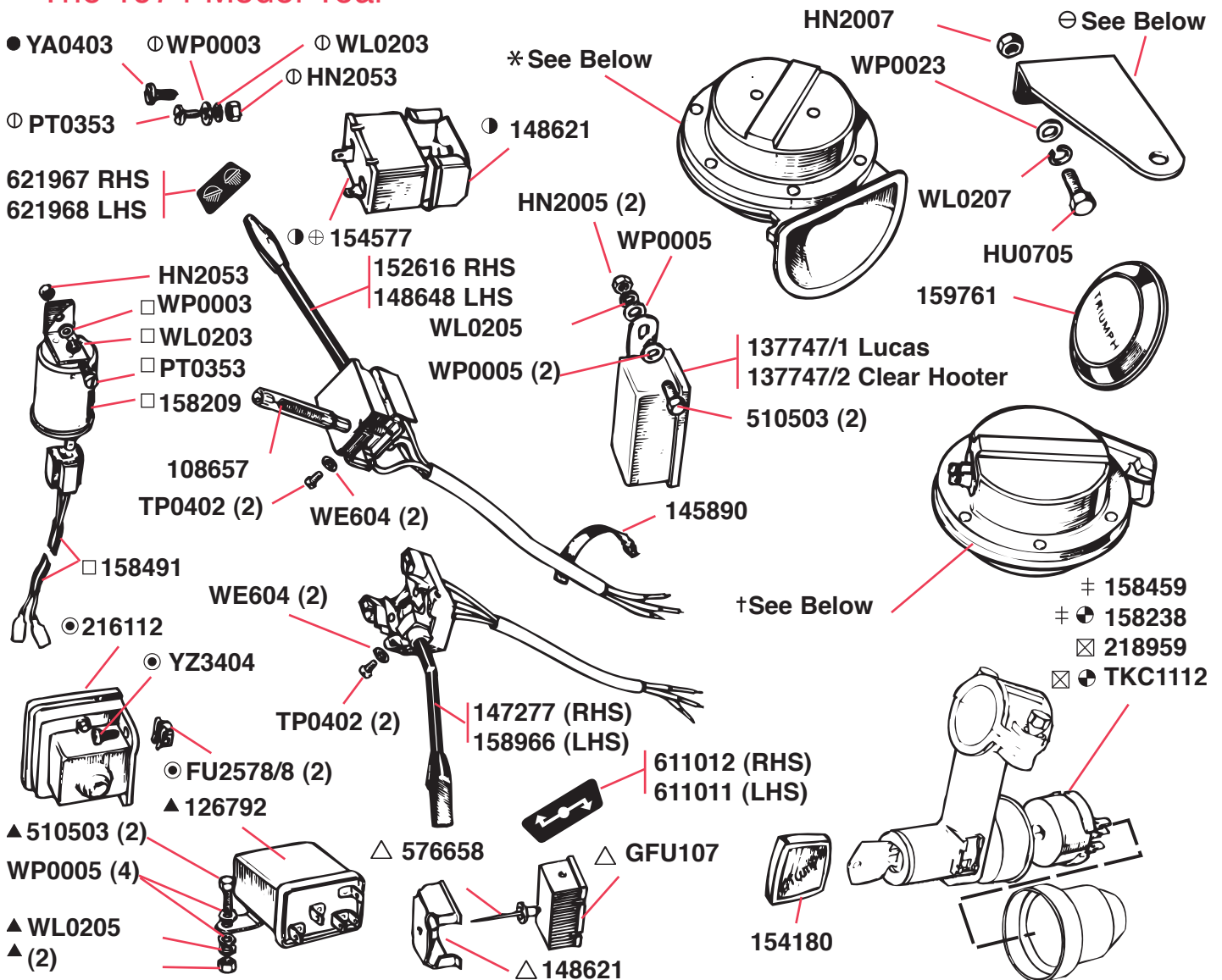
3 Commission no. FM100,020.

ELECTRICAL—Miscellaneous Small Components



- 1 Part of main harness assembly.
- 2 Required when overdrive and/or seat sensor is fitted.
- 3 U.S.A. models only.
- 4 Commission no. FM32,410.
- 5 Commission no. FM40,001.
- 6 For markets other than U.S.A.
- 7 Two required, U.S.A. models.

ELECTRICAL—Miscellaneous Electrical Components—Fitted Through The 1974 Model Year



Most of the information in this illustration is also presented elsewhere in this catalogue. It is included here only as a precaution to insure completeness, and it is recommended that owners of pre-1975 cars use this section.

* 158137/1	Horn, high note, Lucas RH	1 off
* 158137/2	Horn, low note, Clear Hooter RH	1 off
† 158138/1	Horn, low note, Lucas LH	1 off
† 158138/2	Horn, high note, Clear Hooter LH	1 off

Lucas and Clear Hooter horns are interchangeable in car sets only

For use with Lucas horns:

⊖ 156264	Bracket, horn mounting, RH	1 off
⊖ 156263	Bracket, horn mounting, LH	1 off

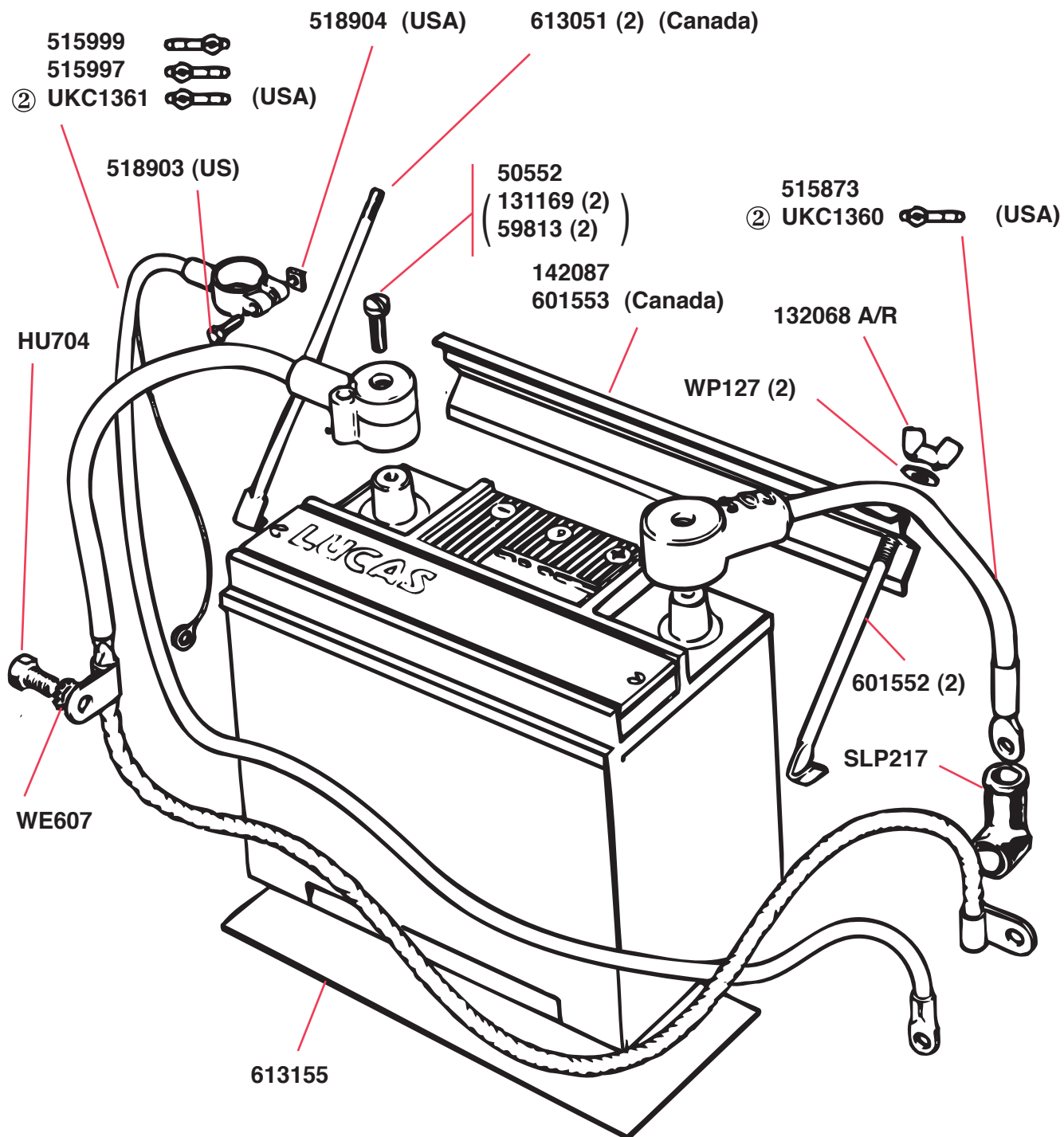
For use with Clear Hooter horns:

⊖ 156276	Bracket, horn mounting, RH	1 off
⊖ 156275	Bracket, horn mounting, LH	1 off

- Alternative to ⊕
- ⊕ Fitted up to comm no FM10,001U (USA) FH62644 Approx RHS
- ⊗ Fitted from comm no FM10,001U (USA) FH62645 Approx RHS

- ⊕ LH steering only.
Also, B A O R RHS
- ⊙ RH steering only. LH steering
(except USA from comm. no.)
- ⊗ USA only
- △ Not required Germany from
- Germany only
- B A O R (RHS)
- ▲ USA from comm. no. FM10,001U

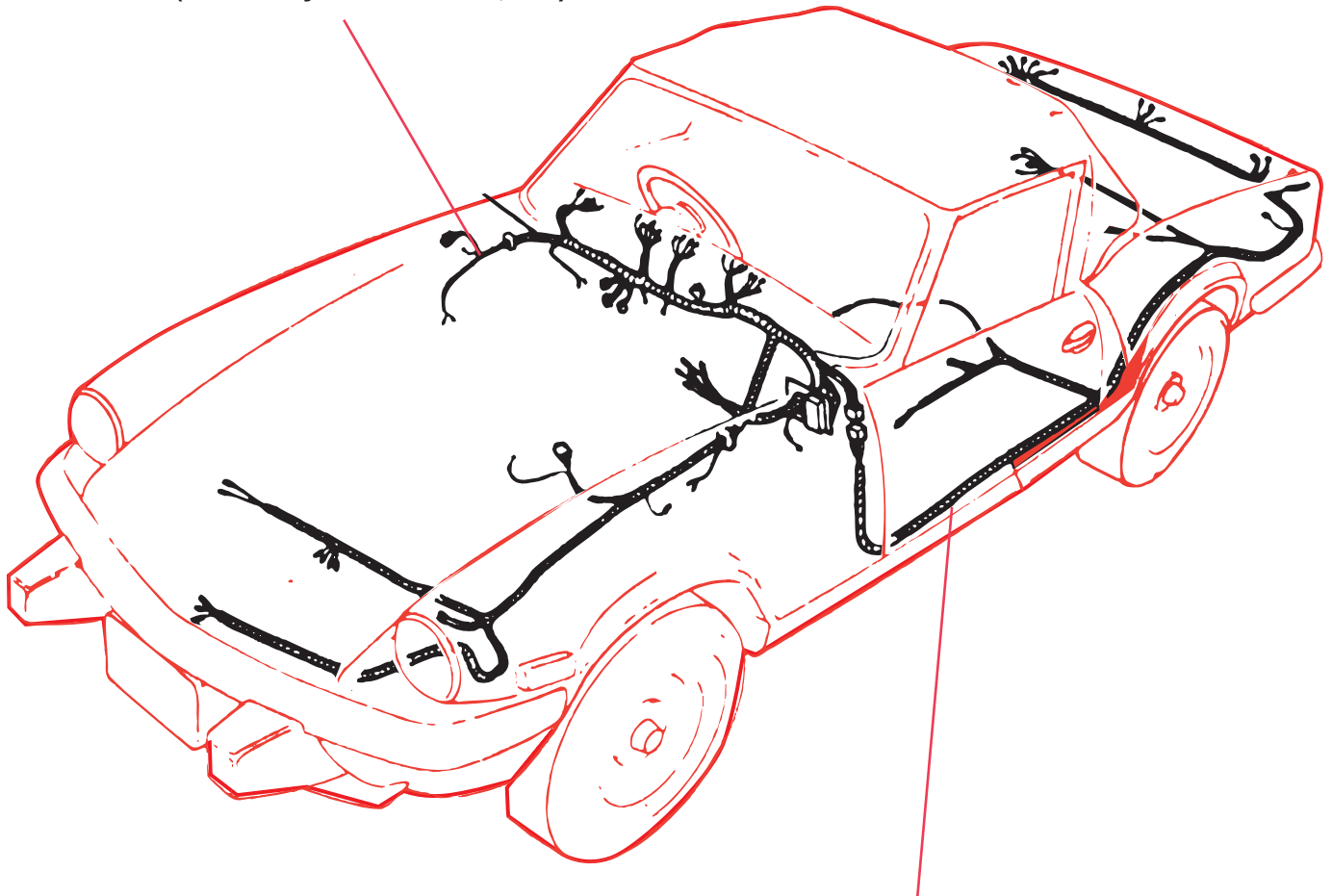
ELECTRICAL—Battery and Leads



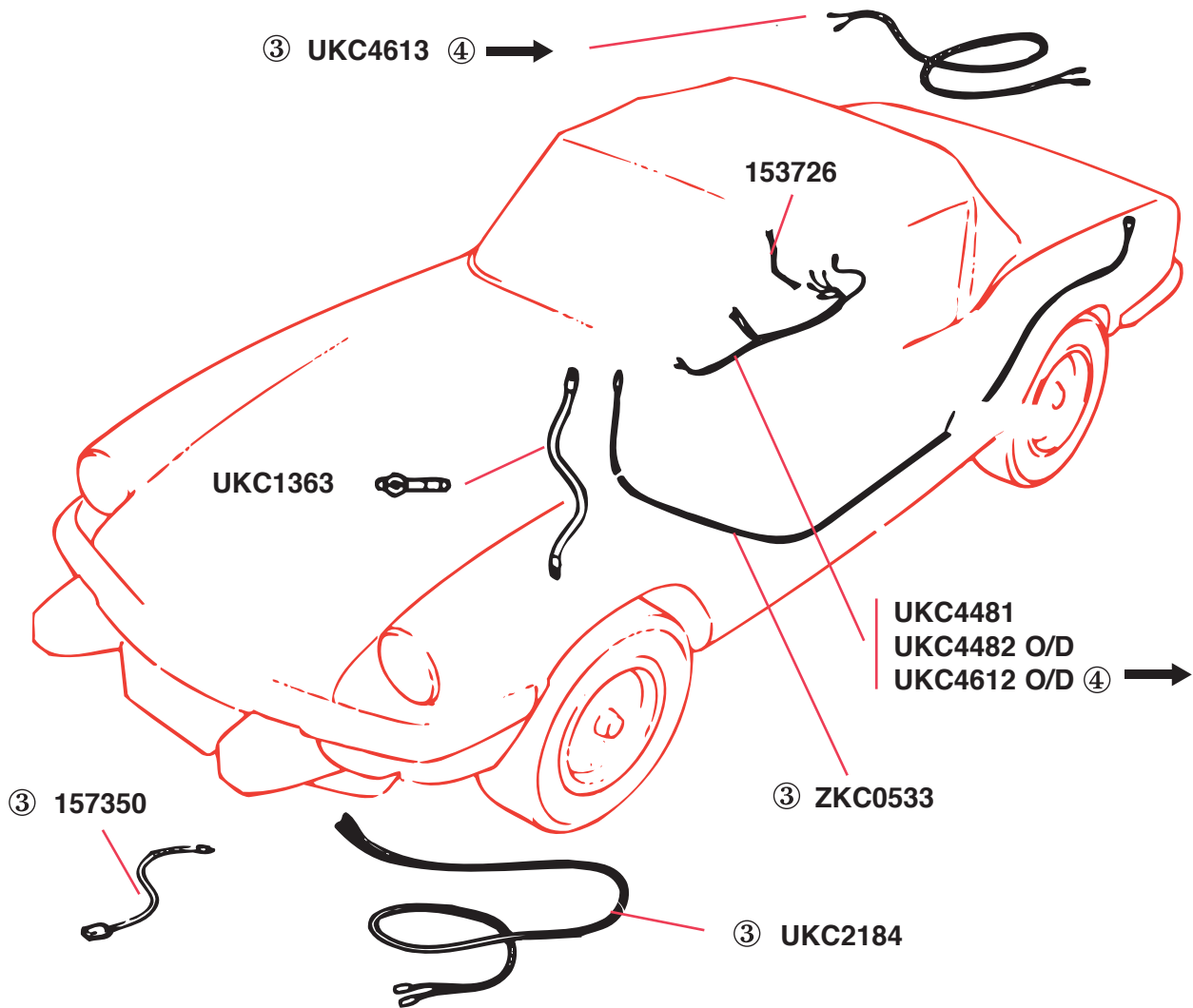
② Fitted to U.S.A. models; alternative fitment to L.H.S. cars in other countries.

ELECTRICAL—Body Harness and Main Harness**MAIN HARNESS (U.S.A. MODELS)**

313268	(up to FM10,001)
RKC959	(from FM10,001 up to FM28,000)
RKC926	(from FM28,001 up to FM40,000)
RKC2873	(from FM40,001 up to FM60,006)
RKC3195	(from FM60,006 up to FM95,001)
PKC766	(Calif. only after FM130,000 to end)
PKC767	(Fed. only from FM95,001 up to FM110,001)
PKC766	(Fed. only after FM110,001)

**BODY HARNESS (U.S.A. MODELS)**

159939	(up to FM10,000)
UKC1489	(from FM10,000 up to FM28,000)
UKC4220	(from FM28,001 up to FM40,000)
UKC7065	(from FM40,001 up to FM60,006)
UKC8212	(AFTER FM60,006)

ELECTRICAL—Wiring Leads

Gearbox harness as fitted up to the end of 1974 was part no. 158371.

1 U.S.A. models.

2 Commission no. FM40,001.

3 Up to commission no. FM60,006

ELECTRICAL—Clips, etc.

